



NOBLE ENERGY

Location: Tyler County, WV
 Field: Tyler
 Facility: SHR-40 Pad

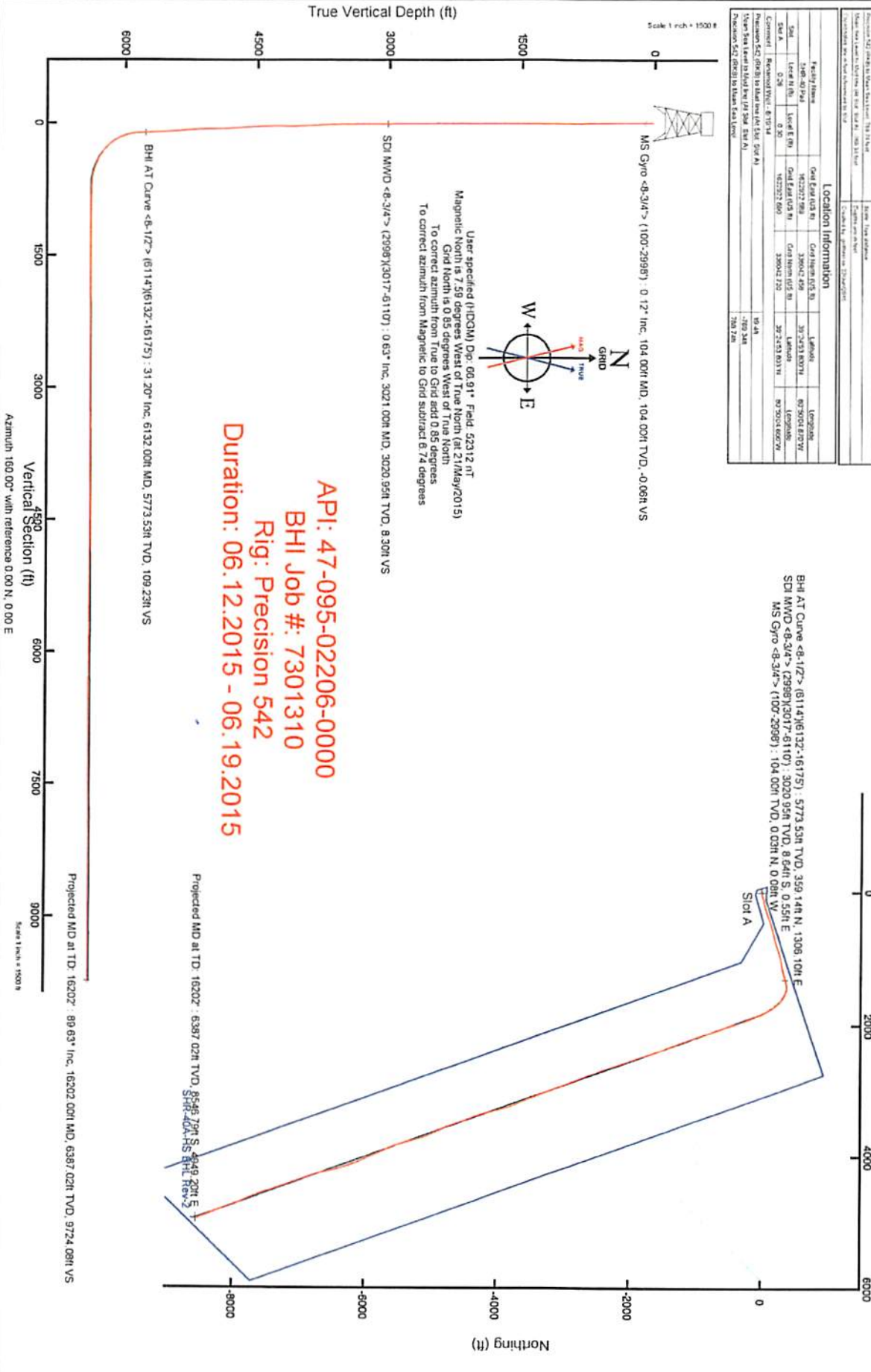
Slot: Slot A
 Well: SHR-40A-HS
 Wellbore: SHR-40A-HS PWB

RECEIVED
 Office of Oil and Gas
 FEB 20 2018
 WV Department of Environmental Protection



Location Information			
Field Name	Grid East (ft)	Grid North (ft)	Location
SHR-40 Pad	482227.993	32020.954	897304.887W
Well Name	Grid East (ft)	Grid North (ft)	Location
SHR-40A-HS	482227.993	32020.954	897304.887W
Wellbore Name	Grid East (ft)	Grid North (ft)	Location
SHR-40A-HS PWB	482227.993	32020.954	897304.887W
Wellbore ID	Wellbore ID	Wellbore ID	Wellbore ID
9048	-789.348	789.348	

BHI AT Curve <8-1/2"> (811476132-16175) : 5773.53ft TVD, 359.14ft N, 1308.10ft E
 SCL MWD <8-3/4"> (299873017-61107) : 3020.95ft TVD, 8.64ft S, 0.55ft E
 MS Gyro <8-3/4"> (1007-29987) : 104.00ft TVD, 0.02ft N, 0.00ft W



API: 47-095-02206-0000
 BHI Job #: 7301310
 Rig: Precision 542
 Duration: 06.12.2015 - 06.19.2015

ACTUAL WELLPATH REPORT (CSV version)

Prepared by Baker Hughes
 Software System: WellArchitect® 4.0.1

REFERENCE WELLPATH IDENTIFICATION

Operator NOBLE ENERGY
 Area Tyler County, WV
 Field Tyler
 Facility SHR-40 Pad
 Slot Slot A
 Well SHR-40A-HS
 Wellbore SHR-40A-HS AWB
 Wellpath SHR-40A-HS AWP Proj: 16202'
 Sidetrack (none)

REPORT SETUP INFORMATION

Projection NAD27 / Lambert West Virginia SP, Northern Zone (4701), US feet
 North Refe Grid
 Scale 0.999947
 Convergen 0.85° West
 Software S WellArchitect® 4.0.1
 User Gotfbral
 Report Ger 22/Jun/2015 at 11:53
 DataBase/! WANorthEast/ev8889.xml

WELLPATH	Local North [ft]	Local East [ft]	Easting [US ft]	Northing [US ft]	Latitude	Longitude
Slot Locatic	0.26	0.3	1622923	336042.7	39°24'53.8	80°50'04.866"W
Facility Ref			1622923	336042.5	39°24'53.8	80°50'04.870"W
Field Refer			609601.2	0	38°23'48.7	84°21'09.765"W

WELLPATH DATUM

Calculation Minimum curvature
 Horizontal Slot
 Vertical Re Precision 542 (RKB)
 MD Refere Precision 542 (RKB)
 Field Vertic Mean Sea Level
 Precision 5 788.74ft
 Precision 5 788.74ft
 Precision 5 19.40ft
 Section Ori N 0.00, E 0.00 ft
 Section Azi 160.00°

WELLPATH DATA † = interpolated/extrapolated station

	MD [ft]	Inclination [°]	Azimuth [°]	TVD [ft]	Vert Sect [ft]	North [ft]	East [ft]	Grid East [US ft]	Grid North [US ft]	Latitude	Longitude	Closure Dist [ft]	Closure Dir [°]	DLS ["/100ft]
†	0	0	293.05	0	0	0	0	1622923	336042.7	39°24'53.8	80°50'04.8	0	0	0
SHL	19.4	0	293.05	19.4	0	0	0	1622923	336042.7	39°24'53.8	80°50'04.8	0	0	0
	104	0.12	293.05	104	-0.06	0.03	-0.08	1622923	336042.8	39°24'53.8	80°50'04.8	0.09	293.05	0.14
	204	0.11	135.92	204	-0.04	0.01	-0.11	1622923	336042.7	39°24'53.8	80°50'04.8	0.11	273.467	0.23
	304	0.18	231.51	304	0.09	-0.16	-0.17	1622923	336042.6	39°24'53.8	80°50'04.8	0.23	226.274	0.22
	404	0.35	181.12	404	0.43	-0.56	-0.3	1622923	336042.2	39°24'53.7	80°50'04.8	0.64	207.743	0.27
	504	0.56	147.9	504	1.19	-1.28	-0.4	1622923	336041.4	39°24'53.7	80°50'04.8	1.28	181.897	0.33
	604	0.2	142.41	603.99	1.83	-1.83	0.32	1622923	336040.9	39°24'53.7	80°50'04.8	1.86	169.995	0.36

RECEIVED
 Office of
 8:07
 FEB 20
 WV Department of
 Environmental

704	0.63	139.92	703.99	2.52	-2.39	0.78	1622924	336040.3	39°24'53.7	80°50'04.8	2.52	161.862	0.43
804	0.4	163.93	803.99	3.38	-3.15	1.23	1622924	336039.6	39°24'53.7	80°50'04.8	3.38	158.595	0.31
904	0.44	109.52	903.98	3.97	-3.61	1.69	1622925	336039.1	39°24'53.7	80°50'04.8	3.99	154.893	0.39
1004	0.48	120.39	1003.98	4.54	-3.95	2.42	1622925	336038.8	39°24'53.7	80°50'04.8	4.63	148.567	0.1
1104	0.05	218.13	1103.98	4.89	-4.2	2.75	1622926	336038.5	39°24'53.7	80°50'04.8	5.02	146.776	0.49
1204	0.22	44.09	1203.98	4.83	-4.1	2.86	1622926	336038.6	39°24'53.7	80°50'04.8	4.99	145.102	0.27
1304	0.16	178.11	1303.98	4.88	-4.1	3	1622926	336038.6	39°24'53.7	80°50'04.8	5.08	143.833	0.35
1404	0.14	242.82	1403.98	5.02	-4.29	2.89	1622926	336038.4	39°24'53.7	80°50'04.8	5.18	146.04	0.16
1504	0.21	10.08	1503.98	4.88	-4.17	2.81	1622926	336038.6	39°24'53.7	80°50'04.8	5.03	145.97	0.32
1604	0.2	192.42	1603.98	4.87	-4.16	2.81	1622926	336038.6	39°24'53.7	80°50'04.8	5.02	145.958	0.41
1704	0.28	258.14	1703.98	4.98	-4.38	2.53	1622925	336038.3	39°24'53.7	80°50'04.8	5.06	149.957	0.27
1804	0.25	325.8	1803.98	4.74	-4.25	2.17	1622925	336038.5	39°24'53.7	80°50'04.8	4.77	152.936	0.3
1904	0.21	325.99	1903.98	4.35	-3.92	1.95	1622925	336038.8	39°24'53.7	80°50'04.8	4.37	153.581	0.04
2004	0.17	12.14	2003.98	4.04	-3.62	1.87	1622925	336039.1	39°24'53.7	80°50'04.8	4.08	152.621	0.15
2104	0.08	271.34	2103.98	3.89	-3.47	1.84	1622925	336039.3	39°24'53.7	80°50'04.8	3.93	152.138	0.2
2204	0.08	157.4	2203.98	3.94	-3.54	1.79	1622925	336039.2	39°24'53.7	80°50'04.8	3.96	153.111	0.13
2304	0.36	167.47	2303.97	4.32	-3.91	1.89	1622925	336038.8	39°24'53.7	80°50'04.8	4.34	154.209	0.28
2404	0.53	181.95	2403.97	5.06	-4.68	1.94	1622925	336038	39°24'53.7	80°50'04.8	5.06	157.462	0.2
2504	0.62	192.33	2503.97	5.94	-5.67	1.81	1622925	336037.1	39°24'53.7	80°50'04.8	5.95	162.294	0.14
2604	0.48	213.16	2603.96	6.65	-6.55	1.46	1622924	336036.2	39°24'53.7	80°50'04.8	6.71	167.389	0.24
2704	0.37	221.37	2703.96	7.06	-7.14	1.02	1622924	336035.6	39°24'53.7	80°50'04.8	7.21	171.853	0.13
2804	0.32	228.07	2803.96	7.32	-7.57	0.6	1622923	336035.2	39°24'53.7	80°50'04.8	7.59	175.46	0.06
2904	0.48	181.97	2903.96	7.81	-8.17	0.38	1622923	336034.6	39°24'53.7	80°50'04.8	8.18	177.347	0.35
3002	0.11	133.78	3001.95	8.27	-8.65	0.43	1622923	336034.1	39°24'53.7	80°50'04.8	8.66	177.137	0.42
3021	0.63	77.13	3020.95	8.3	-8.64	0.55	1622923	336034.1	39°24'53.7	80°50'04.8	8.66	176.373	3.04
3066	1.8	73.44	3065.94	8.38	-8.38	1.47	1622924	336034.3	39°24'53.7	80°50'04.8	8.51	170.077	2.6
3110	2.84	73.52	3109.91	8.49	-7.88	3.17	1622926	336034.9	39°24'53.7	80°50'04.8	8.49	158.049	2.36
3154	3.93	73.49	3153.83	8.64	-7.14	5.66	1622929	336035.6	39°24'53.7	80°50'04.7	9.11	141.562	2.48
3198	5.36	73.52	3197.68	8.86	-6.13	9.08	1622932	336036.6	39°24'53.7	80°50'04.7	10.95	124.002	3.25
3242	6.98	73.15	3241.43	9.14	-4.77	13.61	1622937	336038	39°24'53.7	80°50'04.6	14.42	109.305	3.68
3287	8.7	73.1	3286	9.47	-2.99	19.48	1622942	336039.7	39°24'53.7	80°50'04.6	19.71	98.712	3.82
3375	11.04	73.92	3372.7	10.41	1.28	33.95	1622957	336044	39°24'53.8	80°50'04.4	33.98	87.835	2.66
3463	13.46	72.24	3458.69	11.38	6.74	51.8	1622975	336049.5	39°24'53.8	80°50'04.2	52.24	82.585	2.78
3552	15.34	73.1	3544.89	12.42	13.32	72.93	1622996	336056	39°24'53.9	80°50'03.9	74.14	79.647	2.13
3640	17.36	75.67	3629.32	14.35	19.96	96.79	1623020	336062.7	39°24'54.0	80°50'03.6	98.83	78.349	2.44
3728	19.07	78.32	3712.91	17.73	26.12	123.59	1623046	336068.8	39°24'54.0	80°50'03.2	126.32	78.068	2.16
3817	21.63	78.1	3796.35	22.14	32.45	153.89	1623077	336075.2	39°24'54.1	80°50'02.9	157.27	78.094	2.88
3905	24.7	76.67	3877.25	26.57	40.03	187.66	1623111	336082.8	39°24'54.2	80°50'02.4	191.88	77.958	3.55
3994	28.73	75.79	3956.73	30.89	49.57	226.5	1623149	336092.3	39°24'54.3	80°50'01.9	231.87	77.655	4.55
4082	32.99	73.74	4032.26	34.58	61.48	270.03	1623193	336104.2	39°24'54.4	80°50'01.4	276.94	77.174	4.99
4170	33.2	70.56	4105.99	36.38	76.21	315.75	1623239	336118.9	39°24'54.6	80°50'00.8	324.82	76.431	1.99
4259	32.64	67.77	4180.7	35.69	93.4	360.95	1623284	336136.1	39°24'54.7	80°50'00.2	372.84	75.493	1.82
4347	30.73	69.19	4255.58	34.45	110.37	403.94	1623327	336153.1	39°24'54.9	80°49'59.7	418.74	74.718	2.33
4435	28.85	72	4331.95	34.87	124.92	445.15	1623368	336167.6	39°24'55.1	80°49'59.2	462.35	74.325	2.66
4524	29.41	74.71	4409.7	37.41	137.31	486.65	1623410	336180	39°24'55.2	80°49'58.6	505.65	74.243	1.61
4612	29.49	74.06	4486.33	40.72	148.96	528.32	1623451	336191.7	39°24'55.3	80°49'58.1	548.92	74.254	0.37
4700	31.49	76.26	4562.16	44.76	160.37	571.48	1623494	336203.1	39°24'55.4	80°49'57.6	593.56	74.325	2.6
4789	32.83	75.81	4637.5	49.74	171.81	617.45	1623540	336214.5	39°24'55.5	80°49'57.0	640.91	74.451	1.53
4877	34.32	74.49	4710.82	54.09	184.29	664.49	1623587	336227	39°24'55.7	80°49'56.4	689.57	74.499	1.89
4966	35.93	73.99	4783.61	57.88	198.2	713.77	1623637	336240.9	39°24'55.8	80°49'55.8	740.77	74.481	1.84
5054	36.43	73.62	4854.64	61.32	212.69	763.65	1623687	336255.4	39°24'56.0	80°49'55.1	792.72	74.437	0.62
5142	35.98	72.62	4925.65	64.15	227.78	813.39	1623736	336270.5	39°24'56.1	80°49'54.5	844.68	74.356	0.84
5231	33.69	71.03	4998.69	65.79	243.62	861.69	1623785	336286.3	39°24'56.3	80°49'53.9	895.47	74.213	2.77
5319	32.48	72.42	5072.43	67.23	258.69	907.3	1623830	336301.4	39°24'56.4	80°49'53.3	943.46	74.086	1.62
5407	30.84	73.71	5147.33	69.69	272.15	951.48	1623874	336314.9	39°24'56.6	80°49'52.7	989.64	74.038	2.02

Office of DIVISION
 FEB 26 2010
 Environmental Protection
 M/V Department

	5496	29.93	75.93	5224.1	73.46	283.95	994.91	1623918	336326.7	39°24'56.7	80°49'52.2		1034.64		74.071	1.62
	5584	29.2	78.59	5300.65	78.93	293.53	1037.25	1623960	336336.2	39°24'56.8	80°49'51.7		1077.99		74.199	1.71
	5672	29.86	78.46	5377.22	85.36	302.16	1079.76	1624003	336344.9	39°24'56.9	80°49'51.1		1121.24		74.366	0.75
	5761	29.75	77.7	5454.45	91.58	311.3	1123.04	1624046	336354	39°24'57.0	80°49'50.6		1165.39		74.507	0.44
	5849	29.89	76.39	5530.79	96.94	321.11	1165.69	1624089	336363.8	39°24'57.1	80°49'50.0		1209.11		74.599	0.76
	5937	30.8	74.82	5606.74	101.28	332.17	1208.74	1624132	336374.9	39°24'57.2	80°49'49.5		1253.55		74.634	1.37
	6026	31.33	74.03	5682.97	104.82	344.5	1252.98	1624176	336387.2	39°24'57.3	80°49'48.9		1299.48		74.627	0.75
	6114	31.33	74.96	5758.14	108.4	356.73	1297.07	1624220	336399.4	39°24'57.5	80°49'48.4		1345.23		74.622	0.55
	6132	31.2	75.21	5773.53	109.23	359.14	1306.1	1624229	336401.8	39°24'57.5	80°49'48.2		1354.57		74.625	1.02
	6215	30.36	73.52	5844.84	112.47	370.58	1347	1624270	336413.3	39°24'57.6	80°49'47.7		1397.04		74.618	1.45
	6259	31.17	76.58	5882.65	114.46	376.37	1368.74	1624292	336419.1	39°24'57.7	80°49'47.5		1419.54		74.625	4
KOP	6305	32.31	83.91	5921.78	118.78	380.44	1392.55	1624315	336423.1	39°24'57.7	80°49'47.1		1443.59		74.72	8.74
	6350	34.37	91.82	5959.39	126.4	381.32	1417.22	1624340	336424	39°24'57.7	80°49'46.8		1467.62		74.941	10.68
	6395	35.91	97.84	5996.2	137.29	379.11	1443	1624366	336421.8	39°24'57.7	80°49'46.5		1491.97		75.28	8.42
	6440	37.4	103.83	6032.31	151.06	374.04	1469.35	1624392	336416.7	39°24'57.7	80°49'46.2		1516.21		75.718	8.61
	6484	39.38	108.27	6066.81	167.15	366.47	1495.59	1624418	336409.2	39°24'57.6	80°49'45.8		1539.83		76.232	7.71
	6529	41.5	112.63	6101.06	186.1	356.26	1522.91	1624446	336399	39°24'57.5	80°49'45.5		1564.03		76.834	7.85
	6574	43.79	117.78	6134.17	207.73	343.26	1550.46	1624473	336386	39°24'57.4	80°49'45.1		1588.01		77.517	9.27
	6619	46.18	122.95	6166	232.23	327.16	1577.88	1624501	336369.9	39°24'57.2	80°49'44.8		1611.44		78.286	9.7
	6664	48.54	128.54	6196.5	259.59	307.81	1604.7	1624528	336350.5	39°24'57.0	80°49'44.4		1633.96		79.141	10.53
	6709	52.04	133.1	6225.25	289.81	285.17	1630.86	1624554	336327.9	39°24'56.8	80°49'44.1		1655.61		80.082	11.01
	6754	54.62	136.23	6252.13	322.43	259.8	1656.51	1624579	336302.5	39°24'56.6	80°49'43.8		1676.76		81.087	8
	6799	58.9	139.51	6276.8	357.29	231.88	1681.73	1624605	336274.6	39°24'56.3	80°49'43.4		1697.64		82.15	11.3
	6843	62.71	142.65	6298.26	393.62	201.99	1705.84	1624629	336244.7	39°24'56.0	80°49'43.1		1717.75		83.247	10.67
	6888	66.45	145.08	6317.57	432.65	169.17	1729.79	1624653	336211.9	39°24'55.7	80°49'42.8		1738.04		84.414	9.64
	6933	69.7	147.41	6334.38	473.2	134.46	1752.97	1624676	336177.2	39°24'55.3	80°49'42.5		1758.12		85.614	8.67
	6978	72.49	149.2	6348.95	514.88	98.24	1775.33	1624698	336141	39°24'55.0	80°49'42.2		1778.04		86.833	7.25
	7023	75.09	150.94	6361.52	557.44	60.8	1796.88	1624720	336103.5	39°24'54.6	80°49'41.9		1797.91		88.062	6.87
	7068	79.14	154.12	6371.55	600.92	21.89	1817.1	1624740	336064.6	39°24'54.2	80°49'41.7		1817.23		89.31	11.33
	7112	82.75	156.58	6378.48	644.22	-17.6	1835.21	1624758	336025.1	39°24'53.8	80°49'41.4		1835.3		90.549	9.89
	7157	87.23	157.67	6382.41	688.98	-58.89	1852.63	1624775	335983.8	39°24'53.4	80°49'41.2		1853.57		91.821	10.24
LP	7202	89.05	158.22	6383.87	733.92	-100.57	1869.52	1624792	335942.2	39°24'53.0	80°49'41.0		1872.22		93.079	4.22
	7291	88.92	157.84	6385.44	822.86	-183.1	1902.81	1624826	335859.6	39°24'52.2	80°49'40.5		1911.6		95.496	0.45
	7381	89.75	159.15	6386.49	912.82	-266.82	1935.8	1624859	335775.9	39°24'51.4	80°49'40.1		1954.1		97.848	1.72
	7470	89.11	160.95	6387.37	1001.81	-350.48	1966.17	1624889	335692.3	39°24'50.6	80°49'39.7		1997.16		100.107	2.15
	7560	88.77	164.31	6389.04	1091.68	-436.34	1993.03	1624916	335606.4	39°24'49.7	80°49'39.3		2040.23		102.349	3.75
	7650	88.92	160.49	6390.85	1181.57	-522.1	2020.23	1624943	335520.7	39°24'48.9	80°49'39.0		2086.6		104.49	4.25
	7739	89.32	159.69	6392.22	1270.56	-605.77	2050.53	1624973	335437	39°24'48.1	80°49'38.6		2138.14		106.458	1
	7829	90.18	160.95	6392.61	1360.55	-690.51	2080.84	1625004	335352.3	39°24'47.2	80°49'38.2		2192.42		108.358	1.69
	7918	90.28	161.34	6392.26	1449.53	-774.73	2109.6	1625032	335268	39°24'46.4	80°49'37.8		2247.36		110.165	0.45
	8008	90.25	162.15	6391.84	1539.49	-860.2	2137.79	1625061	335182.6	39°24'45.6	80°49'37.4		2304.37		111.919	0.9
	8097	90.25	161.7	6391.45	1628.44	-944.81	2165.41	1625088	335098	39°24'44.7	80°49'37.1		2362.55		113.573	0.51
	8187	89.85	160.25	6391.37	1718.42	-1029.89	2194.74	1625118	335012.9	39°24'43.9	80°49'36.7		2424.37		115.138	1.67
	8277	89.94	160.01	6391.54	1808.42	-1114.53	2225.33	1625148	334928.3	39°24'43.1	80°49'36.3		2488.83		116.603	0.28
	8366	90.06	160.24	6391.54	1897.42	-1198.23	2255.59	1625178	334844.6	39°24'42.2	80°49'35.9		2554.1		117.978	0.29
	8456	90.06	159.05	6391.44	1987.42	-1282.61	2286.9	1625210	334760.2	39°24'41.4	80°49'35.4		2622.02		119.286	1.32
	8545	90	157.88	6391.4	2076.39	-1365.39	2319.57	1625242	334677.4	39°24'40.6	80°49'35.0		2691.59		120.483	1.32
	8635	89.91	157.94	6391.47	2166.33	-1448.79	2353.41	1625276	334594	39°24'39.8	80°49'34.6		2763.61		121.617	0.12
	8724	90.22	159.89	6391.37	2255.31	-1531.82	2385.43	1625308	334511	39°24'39.0	80°49'34.1		2834.91		122.707	2.22
	8814	90.18	161.78	6391.05	2345.29	-1616.83	2414.97	1625338	334426	39°24'38.1	80°49'33.7		2906.24		123.802	2.1
	8903	89.97	161.95	6390.94	2434.24	-1701.41	2442.67	1625365	334341.4	39°24'37.3	80°49'33.4		2976.82		124.859	0.3
	8993	90.06	161.26	6390.91	2524.21	-1786.81	2471.07	1625394	334256	39°24'36.5	80°49'33.0		3049.41		125.87	0.77
	9083	90.03	160.61	6390.84	2614.2	-1871.87	2500.47	1625423	334171	39°24'35.6	80°49'32.6		3123.5		126.819	0.72
	9172	90.09	160.47	6390.75	2703.19	-1955.79	2530.12	1625453	334087	39°24'34.8	80°49'32.2		3197.91		127.704	0.17
	9261	90.12	159.69	6390.58	2792.19	-2039.46	2560.44	1625483	334003.4	39°24'34.0	80°49'31.8		3273.42		128.538	0.88

RECEIVED
Office of Oil and Gas
FEB 20 2018
WV Department of
Environmental Protection

Top perf Bottom pe LL # of Stgs
7090 16202 9112 45.56

9351	89.94	160.45	6390.54	2882.19	-2124.07	2591.12	1625514	333918.8	39°24'33.1	80°49'31.4	3350.46	129.343	0.87
9440	89.97	162.49	6390.61	2971.16	-2208.45	2619.41	1625542	333834.4	39°24'32.3	80°49'31.0	3426.16	130.135	2.29
9530	89.97	160.88	6390.65	3061.11	-2293.89	2647.69	1625570	333749	39°24'31.5	80°49'30.7	3503.17	130.905	1.79
9620	90.03	160.87	6390.65	3151.1	-2378.92	2677.17	1625600	333663.9	39°24'30.6	80°49'30.3	3581.42	131.624	0.07
9709	90.28	159.78	6390.41	3240.1	-2462.73	2707.14	1625630	333580.1	39°24'29.8	80°49'29.9	3659.73	132.293	1.26
9798	90.31	159.01	6389.96	3329.09	-2546.03	2738.46	1625661	333496.8	39°24'29.0	80°49'29.5	3739.17	132.915	0.87
9888	90.15	158.84	6389.59	3419.08	-2630.01	2770.82	1625694	333412.9	39°24'28.2	80°49'29.0	3820.26	133.507	0.26
9977	90.25	158.29	6389.28	3508.05	-2712.85	2803.35	1625726	333330	39°24'27.4	80°49'28.6	3901.07	134.06	0.63
10067	90.37	158.66	6388.8	3598.02	-2796.58	2836.37	1625759	333246.3	39°24'26.5	80°49'28.2	3983.19	134.595	0.43
10156	90.03	157.99	6388.49	3686.98	-2879.28	2869.24	1625792	333163.6	39°24'25.7	80°49'27.7	4064.82	135.1	0.84
10246	90.03	159.61	6388.44	3776.95	-2963.19	2901.78	1625825	333079.7	39°24'24.9	80°49'27.3	4147.39	135.6	1.8
10335	90.09	159.8	6388.35	3865.95	-3046.66	2932.65	1625855	332996.2	39°24'24.1	80°49'26.9	4228.78	136.092	0.22
10425	90.06	158.57	6388.23	3955.94	-3130.79	2964.63	1625887	332912.1	39°24'23.2	80°49'26.5	4311.71	136.561	1.37
10514	90.34	158.5	6387.92	4044.91	-3213.61	2997.2	1625920	332829.3	39°24'22.4	80°49'26.0	4394.37	136.996	0.32
10604	90.18	159.21	6387.51	4134.89	-3297.55	3029.67	1625952	332745.4	39°24'21.6	80°49'25.6	4478.03	137.424	0.81
10694	90.12	158.62	6387.27	4224.88	-3381.53	3062.04	1625985	332661.4	39°24'20.8	80°49'25.2	4561.89	137.838	0.66
10784	89.88	157.3	6387.27	4314.82	-3464.95	3095.82	1626019	332578	39°24'20.0	80°49'24.7	4646.5	138.22	1.49
10873	89.91	157.08	6387.44	4403.71	-3546.99	3130.32	1626053	332495.9	39°24'19.2	80°49'24.3	4730.75	138.571	0.25
10962	89.82	157.31	6387.65	4492.6	-3629.03	3164.81	1626088	332413.9	39°24'18.4	80°49'23.8	4815.17	138.909	0.28
11052	89.75	155.71	6387.98	4582.43	-3711.57	3200.69	1626123	332331.4	39°24'17.5	80°49'23.3	4901.03	139.227	1.78
11142	89.48	159.93	6388.59	4672.34	-3794.89	3234.65	1626157	332248	39°24'16.7	80°49'22.9	4986.4	139.557	4.7
11231	89.48	163.82	6389.4	4761.28	-3879.45	3262.34	1626185	332163.5	39°24'15.9	80°49'22.5	5068.82	139.939	4.37
11320	89.48	165.83	6390.2	4849.95	-3965.34	3285.63	1626208	332077.6	39°24'15.0	80°49'22.2	5149.69	140.355	2.26
11410	90.03	165.55	6390.59	4939.51	-4052.55	3307.88	1626231	331990.4	39°24'14.2	80°49'21.9	5231.17	140.777	0.69
11500	89.94	163.66	6390.61	5029.21	-4139.31	3331.77	1626254	331903.6	39°24'13.3	80°49'21.6	5313.62	141.169	2.1
11590	89.78	162.77	6390.83	5119.07	-4225.48	3357.76	1626280	331817.5	39°24'12.5	80°49'21.2	5397.15	141.528	1
11679	89.72	161.32	6391.22	5208.01	-4310.14	3385.19	1626308	331732.8	39°24'11.7	80°49'20.9	5480.59	141.854	1.63
11769	89.42	157.29	6391.9	5297.98	-4394.31	3416.99	1626340	331648.7	39°24'10.8	80°49'20.5	5566.49	142.132	4.49
11858	89.38	159.1	6392.83	5386.93	-4476.94	3450.05	1626373	331566	39°24'10.0	80°49'20.0	5652.06	142.381	2.03
11948	89.42	160.8	6393.77	5476.92	-4561.47	3480.9	1626404	331481.5	39°24'09.2	80°49'19.6	5737.92	142.652	1.89
12037	90.4	161.01	6393.91	5565.91	-4645.58	3510.01	1626433	331397.4	39°24'08.4	80°49'19.2	5822.51	142.927	1.13
12127	91.05	159.39	6392.77	5655.9	-4730.25	3540.5	1626463	331312.7	39°24'07.5	80°49'18.8	5908.5	143.186	1.94
12217	89.57	152.71	6392.29	5745.63	-4812.45	3577.01	1626500	331230.5	39°24'06.7	80°49'18.3	5996.22	143.377	7.6
12306	89.63	155.05	6392.91	5834.11	-4892.35	3616.19	1626539	331150.6	39°24'05.9	80°49'17.8	6083.74	143.53	2.63
12396	89.91	155.99	6393.27	5923.84	-4974.26	3653.48	1626576	331068.7	39°24'05.1	80°49'17.3	6171.8	143.704	1.09
12486	89.72	157.43	6393.56	6013.69	-5056.92	3689.06	1626612	330986.1	39°24'04.3	80°49'16.9	6259.52	143.889	1.61
12575	89.42	162.57	6394.23	6102.65	-5140.52	3719.49	1626642	330902.5	39°24'03.5	80°49'16.5	6345.05	144.112	5.78
12665	89.82	164.75	6394.82	6192.46	-5226.88	3744.81	1626668	330816.1	39°24'02.6	80°49'16.1	6429.92	144.38	2.46
12754	89.66	165.22	6395.23	6281.12	-5312.84	3767.87	1626691	330730.2	39°24'01.8	80°49'15.8	6513.3	144.656	0.56
12844	90.12	163.75	6395.4	6370.85	-5399.56	3791.94	1626715	330643.5	39°24'00.9	80°49'15.5	6598.03	144.921	1.71
12933	89.91	160.63	6395.38	6459.77	-5484.28	3819.16	1626742	330558.7	39°24'00.1	80°49'15.1	6683.06	145.147	3.51
13023	89.88	158.26	6395.54	6549.76	-5568.55	3850.76	1626773	330474.5	39°23'59.3	80°49'14.7	6770.31	145.335	2.63
13113	89.82	156.33	6395.78	6639.65	-5651.57	3885.49	1626808	330391.5	39°23'58.5	80°49'14.3	6858.37	145.491	2.15
13203	89.91	155.6	6395.99	6729.43	-5733.76	3922.15	1626845	330309.3	39°23'57.7	80°49'13.8	6946.89	145.626	0.82
13292	90.43	156.44	6395.73	6818.21	-5815.08	3958.32	1626881	330228	39°23'56.9	80°49'13.3	7034.45	145.757	1.11
13382	90.34	156.71	6395.12	6908.05	-5897.66	3994.1	1626917	330145.4	39°23'56.1	80°49'12.8	7122.87	145.893	0.32
13471	90.4	155.43	6394.55	6996.84	-5979.01	4030.2	1626953	330063	39°23'55.3	80°49'12.4	7210.48	146.018	1.44
13561	90.25	154.87	6394.04	7086.51	-6060.67	4068.02	1626991	329982.4	39°23'54.5	80°49'11.9	7299.35	146.13	0.64
13650	90.18	159.12	6393.7	7175.37	-6142.58	4102.79	1627025	329900.5	39°23'53.6	80°49'11.4	7386.75	146.26	4.78
13740	90.09	160.66	6393.49	7265.37	-6227.09	4133.74	1627056	329816	39°23'52.8	80°49'11.0	7474.25	146.423	1.71
13829	90.12	162.15	6393.33	7354.34	-6311.44	4162.11	1627085	329731.6	39°23'52.0	80°49'10.6	7560.25	146.597	1.67
13919	90.09	163.4	6393.16	7444.23	-6397.4	4188.77	1627111	329645.7	39°23'51.1	80°49'10.3	7646.73	146.785	1.39
14009	90.37	167.09	6392.8	7533.84	-6484.42	4211.68	1627134	329558.7	39°23'50.3	80°49'09.9	7732.14	146.996	4.11
14098	90.8	168.42	6391.89	7622.02	-6571.38	4230.56	1627153	329471.7	39°23'49.4	80°49'09.7	7815.41	147.227	1.57
14188	91.2	165.77	6390.32	7711.31	-6659.09	4250.65	1627173	329384	39°23'48.6	80°49'09.4	7900.1	147.449	2.98

RECEIVED
 Office of Oil and Gas
 FEB 9 2018
 MN Department of
 Environmental Protection

Environmental Protection
 MW Department of
FEB 9 2018
 RECEIVED
 Office of Oil and Gas

14278	90.58	160.88	6388.92	7801.12	-6745.27	4276.47	1627199	329297.8	39°23'47.7	80°49'09.1	7986.66	147.626	5.48	
14367	90.25	159.47	6388.28	7890.11	-6828.99	4306.65	1627229	329214.1	39°23'46.9	80°49'08.7	8073.56	147.763	1.63	
14456	90.25	161.38	6387.89	7979.1	-6912.84	4336.47	1627259	329130.3	39°23'46.1	80°49'08.3	8160.41	147.9	2.15	
14546	90.06	160.77	6387.65	8069.09	-6997.97	4365.66	1627288	329045.1	39°23'45.2	80°49'07.9	8248.07	148.042	0.71	
14636	90	161.05	6387.6	8159.08	-7083.02	4395.09	1627318	328960.1	39°23'44.4	80°49'07.5	8335.83	148.18	0.32	
14725	90.31	160.11	6387.36	8248.07	-7166.96	4424.68	1627347	328876.2	39°23'43.6	80°49'07.1	8422.77	148.31	1.11	
14815	90.18	159.9	6386.97	8338.07	-7251.53	4455.46	1627378	328791.6	39°23'42.7	80°49'06.7	8510.92	148.433	0.27	
14904	90.71	160.63	6386.28	8427.06	-7335.3	4485.51	1627408	328707.8	39°23'41.9	80°49'06.3	8598.05	148.554	1.01	
14994	89.94	162.65	6385.77	8517.02	-7420.71	4513.85	1627437	328622.4	39°23'41.1	80°49'05.9	8685.73	148.689	2.4	
15084	89.88	162.16	6385.91	8606.94	-7506.5	4541.06	1627464	328536.6	39°23'40.2	80°49'05.6	8773.19	148.828	0.55	
15173	89.45	161.04	6386.43	8695.9	-7590.95	4569.15	1627492	328452.2	39°23'39.4	80°49'05.2	8860	148.955	1.35	
15263	89.48	157.1	6387.27	8785.87	-7674.99	4601.29	1627524	328368.2	39°23'38.6	80°49'04.8	8948.6	149.057	4.38	
15352	89.78	155.12	6387.85	8874.66	-7756.36	4637.33	1627560	328286.8	39°23'37.8	80°49'04.3	9036.93	149.126	2.25	
15442	90.22	157.26	6387.85	8964.45	-7838.7	4673.67	1627596	328204.5	39°23'37.0	80°49'03.8	9126.24	149.195	2.43	
15532	90.31	160.01	6387.43	9054.42	-7922.5	4706.45	1627629	328120.7	39°23'36.1	80°49'03.4	9215.03	149.287	3.06	
15621	90.22	160.28	6387.02	9143.42	-8006.21	4736.68	1627659	328037	39°23'35.3	80°49'03.0	9302.45	149.39	0.32	
15711	90.22	159.71	6386.67	9233.42	-8090.78	4767.47	1627690	327952.4	39°23'34.5	80°49'02.6	9390.92	149.491	0.63	
15800	90.22	158.64	6386.33	9322.4	-8173.96	4799.11	1627722	327869.2	39°23'33.7	80°49'02.1	9478.67	149.582	1.2	
15890	90	156.09	6386.16	9412.3	-8257.02	4833.74	1627756	327786.2	39°23'32.9	80°49'01.7	9567.84	149.655	2.84	
15980	90.06	157.09	6386.11	9502.14	-8339.61	4869.5	1627792	327703.6	39°23'32.0	80°49'01.2	9657.18	149.719	1.11	
16069	89.72	159.19	6386.28	9591.09	-8422.21	4902.64	1627825	327621	39°23'31.2	80°49'00.8	9745.23	149.796	2.39	
16159	89.69	159.57	6386.75	9681.08	-8506.44	4934.33	1627857	327536.7	39°23'30.4	80°49'00.4	9833.98	149.883	0.42	
16175	89.63	159.82	6386.84	9697.08	-8521.45	4939.88	1627863	327521.7	39°23'30.3	80°49'00.3	9849.75	149.899	1.61	
BHL	16202	89.63	159.82	6387.02	9724.08	-8546.79	4949.2	1627872	327496.4	39°23'30.0	80°49'00.2	9876.34	149.926	0

TARGETS

Name	MD	TVD	North	East	Grid East	Grid North	Latitude	Longitude	Shape	Comment
	[ft]	[ft]	[ft]	[ft]	[US ft]	[US ft]				
SHR-40A-HS BHL Rev-2		6374.29	-8551.32	4939.41	1627862	327491.9	39°23'30.0	80°49'00.3	point	
SHR-40A-HS LP Plat		6376.9	-103.48	1864.65	1624787	335939.3	39°24'53.0	80°49'41.0	point	
SHR-40A-HS LP Rev-2		6390	-94.19	1861.27	1624784	335948.5	39°24'53.1	80°49'41.1	point	
SHR-40 Pad LL		6599.24	-0.26	-0.3	1622923	336042.5	39°24'53.8	80°50'04.8	polygon	

WELLPATH COMPOSITION Ref Wellbore: SHR-40A-HS AWB Ref Wellpath: SHR-40A-HS AWP Proj: 16202'

Log Name/	Start MD	End MD	Pos Unc	Model
	[ft]	[ft]		
O1_MS Gyro	19.4	3002		Generic gyro - northseeking (Standard)
O2_SDI MV	3002	6114		ISCSWA MWD, Rev. 2 (Standard)
O3_BHI AT	6114	16175		NaviTrak (AT Curve Short Spaced)
Projection	16175	16202		Blind Drilling (std)

COMMENTS

Wellpath general comments
 API: 47-095-02206-0000
 BHI Job #: 7301310
 Rig: Precision 542
 Duration: 06.12.2015 - 06.19.2015
 MS Gyro <8-3/4> (100'-2998")
 SDI MWD <8-3/4> (2998')[(3017'-6110)"]
 BHI AT Curve <8-1/2> (6114')[(6132'-16175)"]
 Projected MD at TD: 16202'