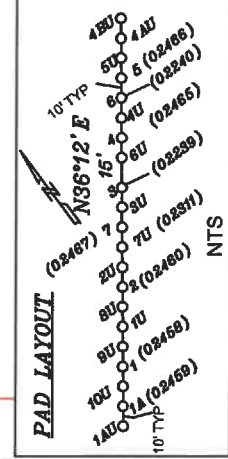
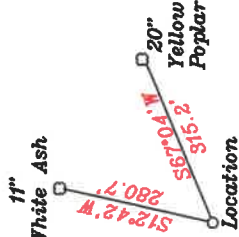
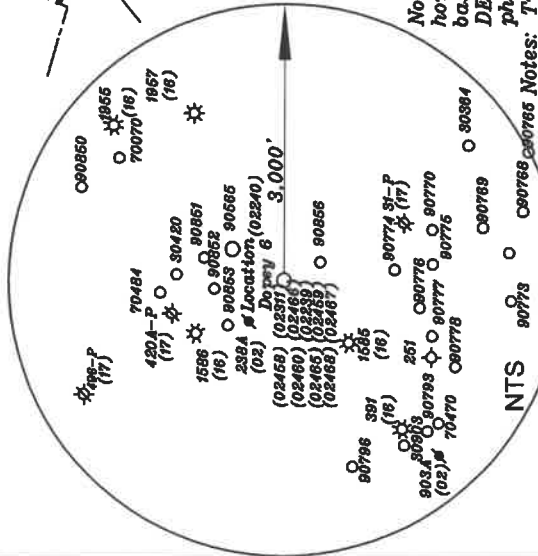


References



- A- Jefferson Minerals, LLC 25.31 ac. TM 11/29.1
- B- Montgomery 65 ac. TM 11/27 T3055.A
- C- Montgomery 2.18 ac. TM 11/14 T3052.A
- D- Vincent 1.82 ac. TM 11/14.4
- E- Ritter (Life) 1.63 ac. TM 11/29
- F- Stillson 0.37 ac. TM 11/28
- G- Tallman 5.135 ac. TM 11/14.5
- H- Jefferson Minerals, LLC 2 ac. TM 11/28.1
- I- Tallman 28.631 ac. TM 11/14.3 T3052.A
- J- Woodburn 1.2 ac. TM 11/19.1
- K- Underwood 136 ac. TM 11/4 T3158
- L- Woodburn et al 30.05 ac. TM 11/13 T3052
- M- Booher 25 ac. TM 11/10
- N- R. Dotson(Life) 1 ac. TM 11/5.2
- O- Dotson 37 ac. TM 11/5.1
- P- T. Dotson 62 ac. TM 11/5
- Q- Seago 32.25 ac. T.M.11/2
- R- Hoover et al 108 ac. T.M.6/37 T3183
- S- Coastal Forest Resources Co. 23 ac. T.M.6/39 Fruit733
- T- Coastal Lumber Co. 60 ac. T.M.6/38
- U- Gorbey 16.73ac. TM 6/ 47
- V- F.M. McIntyre Estate et al 19.78 ac. TM 6/ 48
- W- Woodburn et al 6.75 ac. TM 11/ 44
- X- Woodburn et al 1.5 ac. TM 11/ 44
- Y- Woodburn et al 0.755 ac. TM 11/ 45
- Z- Woodburn et al 35 ac. TM 11/ 43
- AA Coastal Lumber Co. 119 ac. TM 11/3 T3184

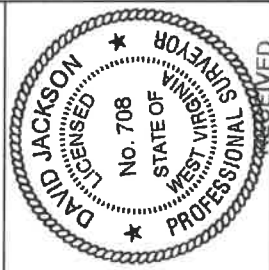


(+) DENOTES LOCATION OF WELL ON UNITED STATES TOPOGRAPHIC MAPS

FILE NO. \_\_\_\_\_  
 DRAWING NO. 1  
 SCALE 1" = 2000'  
 MINIMUM DEGREE OF ACCURACY 1 in 200  
 PROVEN SOURCE OF ELEVATION GPS  
submeter unit

I THE UNDERSIGNED, HEREBY CERTIFY THAT THIS PLAT IS CORRECT TO THE BEST OF MY KNOWLEDGE AND BELIEF AND SHOWS ALL THE INFORMATION REQUIRED BY LAW AND THE RULES ISSUED AND PRESCRIBED BY THE DEPARTMENT OF ENVIRONMENTAL PROTECTION.

(SIGNED) David L Jackson  
 R.P.E. \_\_\_\_\_ P.L.S. 708



STATE OF WEST VIRGINIA  
 Division of Environmental Protection  
 OFFICE OF OIL AND GAS

DATE February 15, Office of Oil and Gas  
 OPERATOR'S WELL NO. Dopey 6  
 API WELL NO. 47 095 COUNTY Montgomery  
02240 DATE JUN 03 2019

WELL TYPE: OIL    GAS X LIQUID INJECTION    WASTE DISPOSAL    STATE    COUNTY     
 (IF "GAS") PRODUCTION X STORAGE    DEEP    SHALLOW X  
 LOCATION: ELEVATION 910.2, WATER SHED Indian Creek

DISTRICT McElroy COUNTY Tyler  
 QUADRANGLE Shirley 7 1/2'

SURFACE OWNER John & Patty Montgomery ACREAGE 65 ac.  
 OIL & GAS ROYALTY OWNER & LEASE NO. See ownership list above for Lease Numbers.

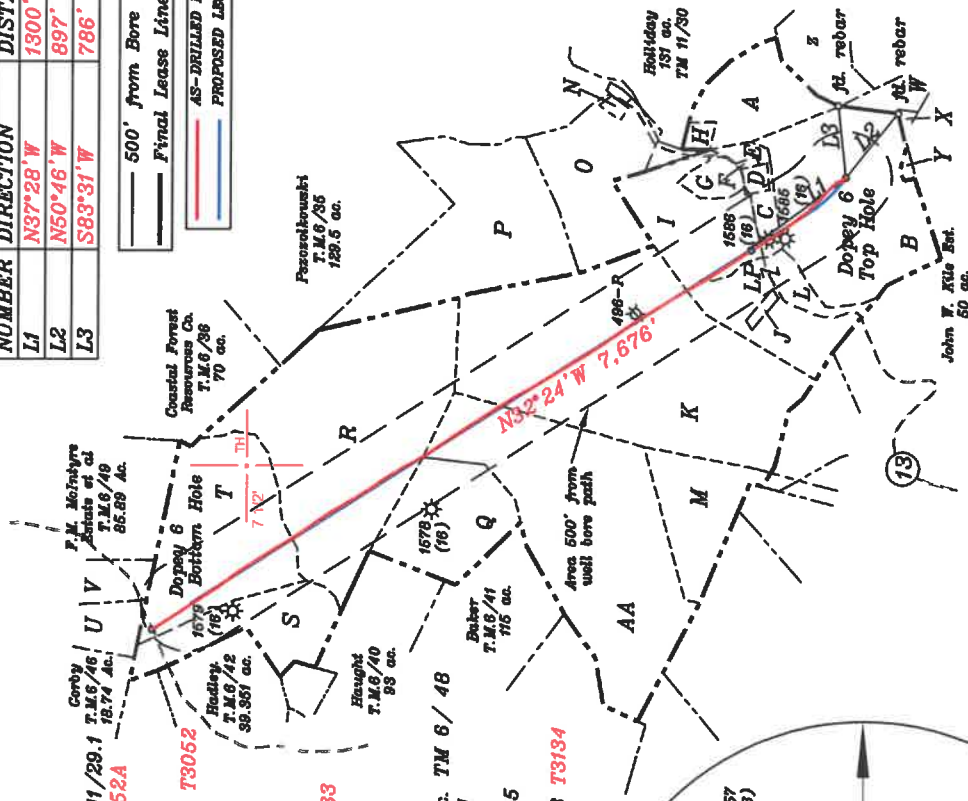
PROPOSED WORK: DRILL    CONVERT    DRILL DEEPER    REDRILL    FRACTURE OR STIMULATE    PLUG OFF OLD FORMATION    PERFORATE NEW FORMATION    OTHER PHYSICAL CHANGE IN WELL (SPECIFY) AS DRILLED

PLUG AND ABANDON    CLEAN OUT AND REPLUG    ESTIMATED DEPTH TVD 6,609.5'; TMD 14,920'  
 TARGET FORMATION Marcellus  
 WELL OPERATOR Jay Bee Oil & Gas, Inc. DESIGNATED AGENT Randy Broda  
 ADDRESS 1720 Rt. 22, East Union, NJ 07083 ADDRESS 3570 Shields Hill Road, Cairo, WV 26337

Bottom Hole 11,313' Top Hole 6,455'  
 LATITUDE 39-27-30 N

Top Hole	Bottom Hole
UTM NAD83(meters)-4365443.0 N. 519592.7 E	UTM NAD83(meters)-4365443.0 N. 519592.7 E
Landing Point	Landing Point
UTM NAD83(meters)-4365583.4 N. 519462.1 E	UTM NAD83(meters)-4365583.4 N. 519462.1 E
Bottom Hole	Bottom Hole
UTM NAD83(meters)-4367592.2 N. 518143.0 E	UTM NAD83(meters)-4367592.2 N. 518143.0 E
Top Hole	Top Hole
UTM NAD83(meters)-4365442.9 N. 519592.8 E	UTM NAD83(meters)-4365442.9 N. 519592.8 E
Landing Point	Landing Point
UTM NAD83(meters)-4365753.3 N. 519346.7 E	UTM NAD83(meters)-4365753.3 N. 519346.7 E
Bottom Hole	Bottom Hole
UTM NAD83(meters)-4367706.7 N. 518060.6 E	UTM NAD83(meters)-4367706.7 N. 518060.6 E

NUMBER	DIRECTION	DISTANCE
L1	N37°28' W	1300'
L2	N50°46' W	897'
L3	S83°31' W	786'



Notes: All wells within 500' of the horizontal leg are shown on this plat based upon information taken from DEP mapping, well plats, & aerial photos.

Notes: No water wells were found within 250' of the well location. A house was found N55°54' W 614.3 from the center of the well pad.

LONGITUDE 80-45-00 W Top Hole 7,232'  
Bottom Hole 149'