

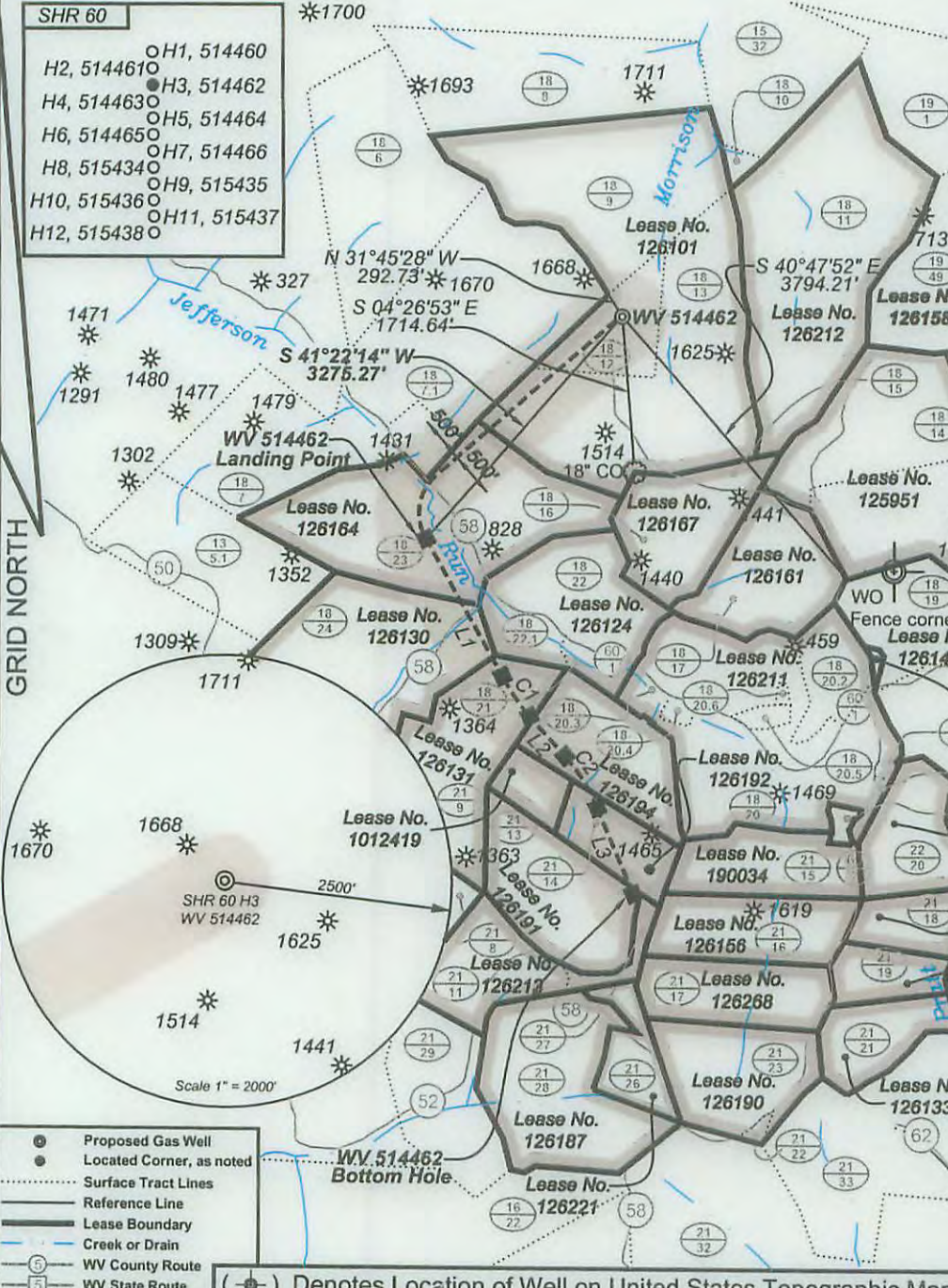
SHR 60
WV 514462
EQT Production Company

5525'
 LATITUDE 39 - 25 - 00

LONGITUDE 80 - 47 - 30
 8008'

- SHR 60
- H1, 514460
 - H2, 514461
 - H3, 514462
 - H4, 514463
 - H5, 514464
 - H6, 514465
 - H7, 514466
 - H8, 515434
 - H9, 515435
 - H10, 515436
 - H11, 515437
 - H12, 515438

Notes:
 WV 514462 coordinates are
 NAD 27 N: 328,552.13 E: 1,629,438.94
 NAD 27 Lat: 39.394645 Long: -80.811237
 NAD 83 UTM N: 4,360,598.26 E: 516,268.95
 WV 514462 Landing Point coordinates are
 NAD 27 N: 326,094.21 E: 1,627,274.23
 NAD 27 Lat: 39.387810 Long: -80.818769
 NAD 83 UTM N: 4,359,838.43 E: 515,621.96
 WV 514462 Bottom Hole coordinates are
 NAD 27 N: 322,177.80 E: 1,629,566.39
 NAD 27 Lat: 39.377151 Long: -80.810458
 NAD 83 UTM N: 4,358,656.95 E: 516,340.18
 West Virginia Coordinate system of 1927 (North Zone)
 based upon Differential GPS Measurements.
 Plat orientation, corner and well ties are based upon
 the grid north meridian.
 Well location references are based upon the grid north
 meridian.
 UTM coordinates are NAD83, Zone 17, Meters.

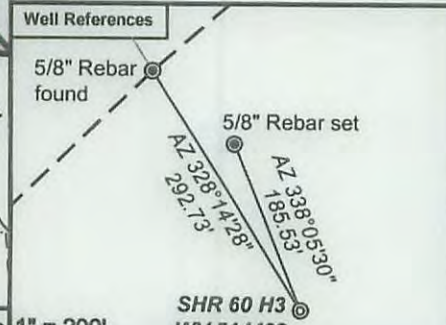


Lease No.	Acres	Owner
126164	113	Robert D. Seckman, et. al.
126130	90	George Birklein, et. al.
126131	66	CNX Gas Co.
126194	45	Barbara S. Stack, et. al.
126192	22	Sue E. Costilow
126191	55	EQT Mineral Purchasing Group

Curve	Radius	Arc Length	Chord Bearing
C1	2146.83'	533.49'	S 34°16'41" E
C2	1924.18'	676.44'	S 31°53'12" E

LINE	BEARING	DISTANCE
L1	S 29°00'00" E	1,739.76'
L2	S 42°00'00" E	590.00'
L3	S 22°52'21" E	1,025.88'

- Proposed Gas Well
- Located Corner, as noted
- Surface Tract Lines
- Reference Line
- Lease Boundary
- Creek or Drain
- WV County Route
- WV State Route



I, the undersigned, hereby certify that this plat is correct to the best of my knowledge and belief and shows all the information required by law and the regulations issued and prescribed by the Department of Environmental Protection.

Ben R. Singleton
 P.S. 2092



FILE NO: 208-13
 DRAWING NO: 208-13 SHR 60 H3
 SCALE: 1" = 2000'
 MINIMUM DEGREE OF ACCURACY: 1:2500
 PROVEN SOURCE OF ELEVATION: NGS CORS Station

STATE OF WEST VIRGINIA
 DEPARTMENT OF ENVIRONMENTAL PROTECTION
OIL AND GAS DIVISION

DATE: March 31, 2016
 OPERATOR'S WELL NO.: 514462
 API WELL NO: 47 - 95 - 2255 H6A
 STATE COUNTY PERMIT

WELL TYPE: OIL GAS LIQUID INJECTION WASTE DISPOSAL
 (IF GAS) PRODUCTION: STORAGE DEEP SHALLOW
 LOCATION: ELEVATION: Ground 1,018' Proposed 1,011' WATERSHED Morrison Run of McElroy Creek QUADRANGLE: Shirley
 DISTRICT: McElroy COUNTY: Tyler
 SURFACE OWNER: Vivian J. Wells, et al. ACREAGE: 35.38
 ROYALTY OWNER: George Birklein, et al. LEASE NO: 126101 ACREAGE: 240
 PROPOSED WORK: DRILL CONVERT DRILL DEEPER FRACTURE OR STIMULATE PLUG OFF OLD FORMATION
 PERFORATE NEW FORMATION OTHER PHYSICAL CHANGE IN WELL (SPECIFY)
 PLUG AND ABANDON CLEAN OUT AND REPLUG TARGET FORMATION: Marcellus ESTIMATED DEPTH: 6,596'

WELL OPERATOR: EQT Production Company DESIGNATED AGENT: Rex C. Ray
 ADDRESS: 115 Professional Place PO Box 280 Bridgeport, WV 26330
 ADDRESS: 115 Professional Place PO Box 280 Bridgeport, WV 26330