

SHR 60
WV 514464
EQT Production Company

LATITUDE 39 - 25 - 00

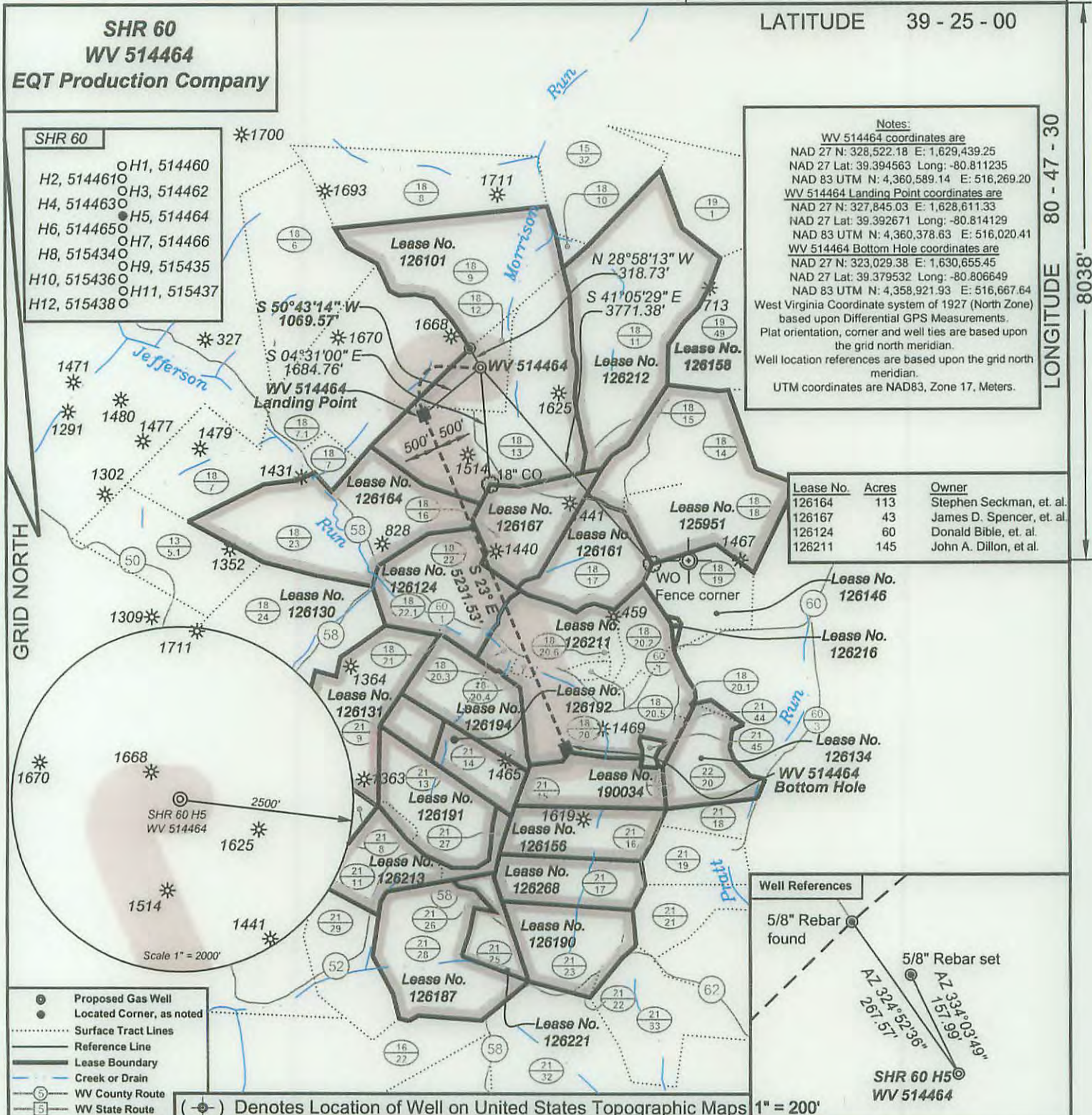
5526'

LONGITUDE 80 - 47 - 30

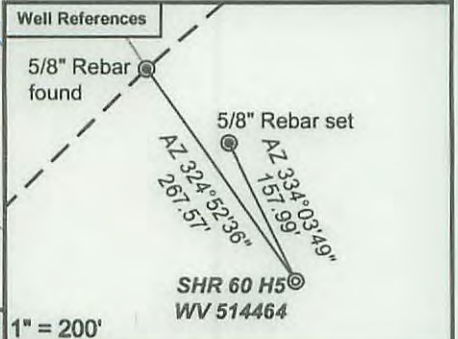
- SHR 60**
- H1, 514460
 - H2, 514461
 - H3, 514462
 - H4, 514463
 - H5, 514464
 - H6, 514465
 - H7, 514466
 - H8, 515434
 - H9, 515435
 - H10, 515436
 - H11, 515437
 - H12, 515438

Notes:
 WV 514464 coordinates are
 NAD 27 N: 328,522.18 E: 1,629,439.25
 NAD 27 Lat: 39.394563 Long: -80.811235
 NAD 83 UTM N: 4,360,589.14 E: 516,269.20
 WV 514464 Landing Point coordinates are
 NAD 27 N: 327,845.03 E: 1,628,611.33
 NAD 27 Lat: 39.392671 Long: -80.814129
 NAD 83 UTM N: 4,360,378.63 E: 516,020.41
 WV 514464 Bottom Hole coordinates are
 NAD 27 N: 323,029.38 E: 1,630,655.45
 NAD 27 Lat: 39.379532 Long: -80.806649
 NAD 83 UTM N: 4,358,921.93 E: 516,667.64
 West Virginia Coordinate system of 1927 (North Zone)
 based upon Differential GPS Measurements.
 Plat orientation, corner and well ties are based upon
 the grid north meridian.
 Well location references are based upon the grid north
 meridian.
 UTM coordinates are NAD83, Zone 17, Meters.

GRID NORTH



Lease No.	Acres	Owner
126164	113	Stephen Seckman, et. al.
126167	43	James D. Spencer, et. al.
126124	60	Donald Bible, et. al.
126211	145	John A. Dillon, et. al.

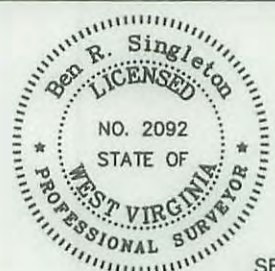


- Proposed Gas Well
 - Located Corner, as noted
 - Surface Tract Lines
 - Reference Line
 - Lease Boundary
 - Creek or Drain
 - WV County Route
 - WV State Route
- (○) Denotes Location of Well on United States Topographic Maps



I, the undersigned, hereby certify that this plat is correct to the best of my knowledge and belief and shows all the information required by law and the regulations issued and prescribed by the Department of Environmental Protection.

Ben R. Singleton
 P.S. 2092



FILE NO: 208-13
 DRAWING NO: 208-13 SHR 60 H5
 SCALE: 1" = 2000'
 MINIMUM DEGREE OF ACCURACY: 1:2500
 PROVEN SOURCE OF ELEVATION: NGS CORS Station

STATE OF WEST VIRGINIA
 DEPARTMENT OF ENVIRONMENTAL PROTECTION
OIL AND GAS DIVISION

DATE: January 5 20 16
 OPERATOR'S WELL NO.: 514464
 API WELL NO
 47 - 95 - 02254164
 STATE COUNTY PERMIT

WELL TYPE: OIL GAS LIQUID INJECTION WASTE DISPOSAL
 (IF GAS) PRODUCTION: STORAGE DEEP SHALLOW
 LOCATION: ELEVATION: Proposed 1,011' Ground 1,018' WATERSHED Morrison Run of McElroy Creek QUADRANGLE: Shirley
 DISTRICT: McElroy COUNTY: Tyler
 SURFACE OWNER: Vivian J. Wells, et al. ACREAGE: 35.38
 ROYALTY OWNER: George Birklein, et al. LEASE NO: 126101 ACREAGE: 240
 PROPOSED WORK: DRILL CONVERT DRILL DEEPER FRACTURE OR STIMULATE PLUG OFF OLD FORMATION
 PERFORATE NEW FORMATION OTHER PHYSICAL CHANGE IN WELL (SPECIFY)
 PLUG AND ABANDON CLEAN OUT AND REPLUG TARGET FORMATION: Marcellus ESTIMATED DEPTH: TVD 6,596'

WELL OPERATOR: EQT Production Company DESIGNATED AGENT: Rex C. Ray
 ADDRESS: 115 Professional Place PO Box 280 Bridgeport, WV 26330
 ADDRESS: 115 Professional Place PO Box 280 Bridgeport, WV 26330

03/25/2016