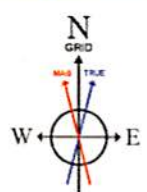
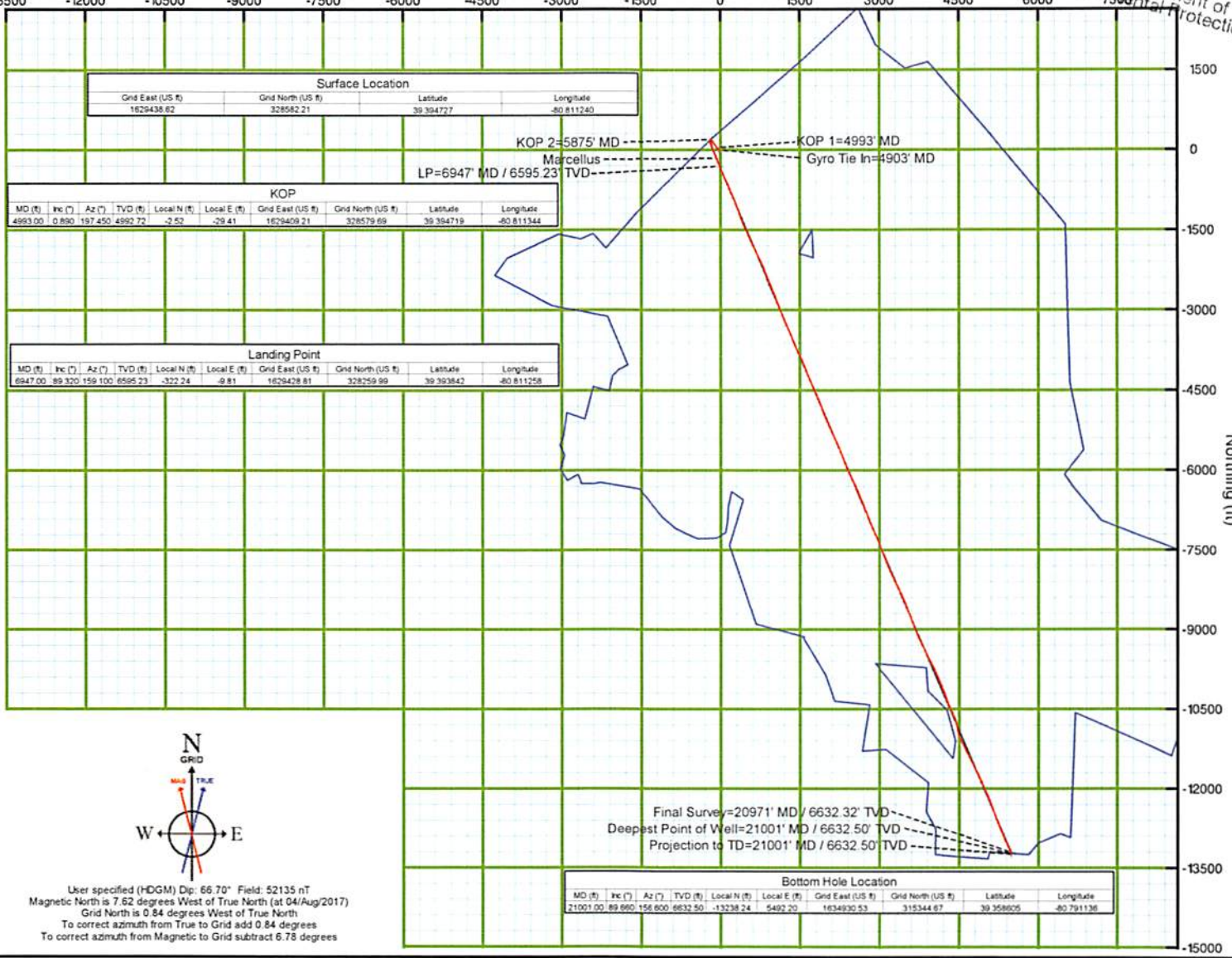
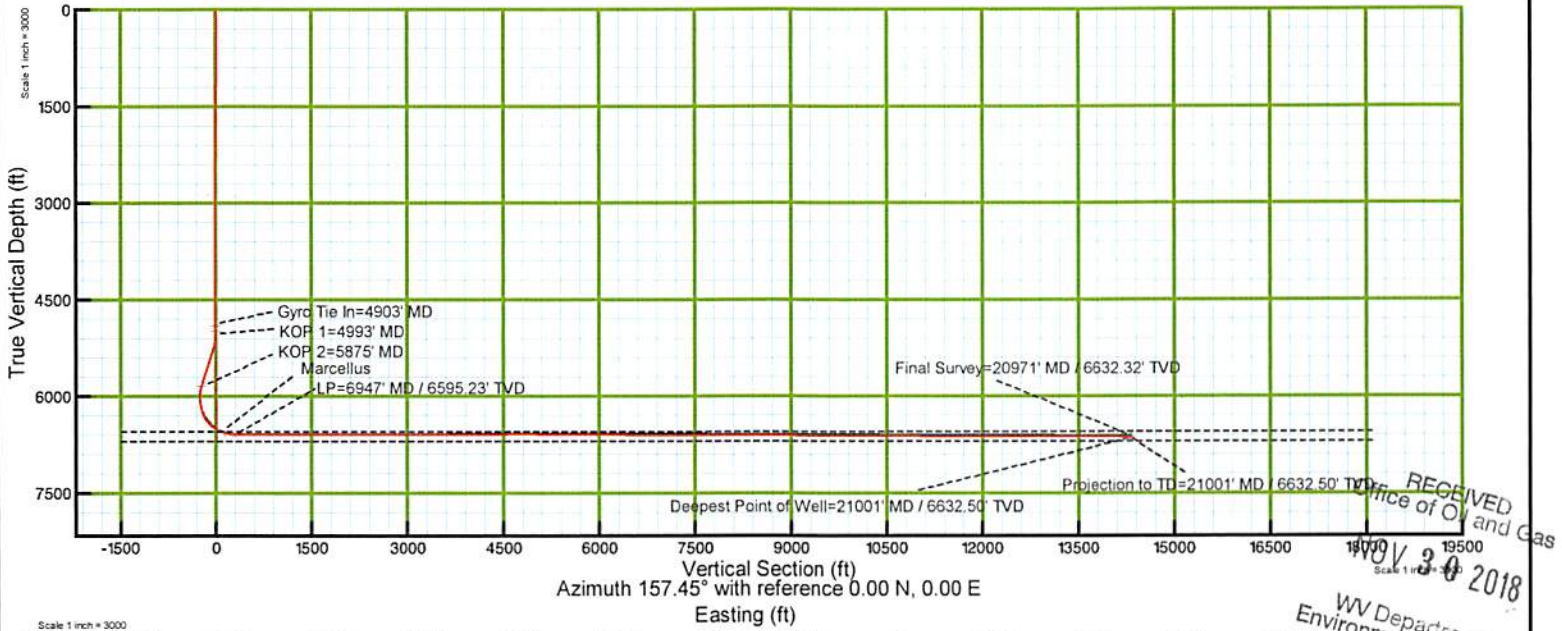


KB Elevation=1027 FT
Ground Elevation=1011 FT
All measurements were taken from KB Elevation



User specified (HDGM) Dip: 66.70° Field: 52135 nT
Magnetic North is 7.62 degrees West of True North (at 04/Aug/2017)
Grid North is 0.84 degrees West of True North
To correct azimuth from True to Grid add 0.84 degrees
To correct azimuth from Magnetic to Grid subtract 6.78 degrees



Where energy meets innovation.

Actual Wellpath Report

SHR-60 514460 ST01 AWP Proj: 21001'

Page 1 of 15



REFERENCE WELLPATH IDENTIFICATION			
Operator	EQT	Slot	Slot 514460
Area	Tyler County, WV	Well	SHR-60 514460 ST01
Field	Tyler	Wellbore	SHR-60 514460 ST01 AWB
Facility	SHR-60 Pad	Sidetrack from	SHR-60 514460 AWP Proj: 6657' at 4903.00 MD

REPORT SETUP INFORMATION			
Projection System	NAD27 / Lambert West Virginia SP, Northern Zone (4701), US feet	Software System	WellArchitect® 5.0
North Reference	Grid	User	Edsaryar
Scale	0.999949	Report Generated	23/Aug/2017 at 20:14
Convergence at slot	0.84° West	Database/Source file	WA_MPL_EASTERNUS_Defn/SHR-60_514460_ST01_AWP_Proj_21001_.xml

WELLPATH LOCATION						
	Local coordinates		Grid coordinates		Geographic coordinates	
	North[ft]	East[ft]	Easting[US ft]	Northing[US ft]	Latitude	Longitude
Slot Location	0.00	0.00	1629438.62	328582.21	39°23'41.019"N	80°48'40.465"W
Facility Reference Pt			1629438.62	328582.21	39°23'41.019"N	80°48'40.465"W
Field Reference Pt			609601.22	0.00	38°23'48.753"N	84°21'09.765"W

WELLPATH DATUM			
Calculation method	Minimum curvature	Savanna 655 (RKB) to Facility Vertical Datum	1027.00ft
Horizontal Reference Pt	Slot	Savanna 655 (RKB) to Mean Sea Level	1027.00ft
Vertical Reference Pt	Savanna 655 (RKB)	Savanna 655 (RKB) to Ground Level at Slot (Slot 514460)	16.00ft
MD Reference Pt	Savanna 655 (RKB)	Section Origin	N 0.00, E 0.00 ft
Field Vertical Reference	Mean Sea Level	Section Azimuth	157.45°

RECEIVED
Office of Oil and Gas

NOV 30 2018

WV Department of
Environmental Protection



Where energy meets innovation.

Actual Wellpath Report

SHR-60 514460 ST01 AWP Proj: 21001'

Page 2 of 15



REFERENCE WELLPATH IDENTIFICATION			
Operator	EQT	Slot	Slot 514460
Area	Tyler County, WV	Well	SHR-60 514460 ST01
Field	Tyler	Wellbore	SHR-60 514460 ST01 AWB
Facility	SHR-60 Pad	Sidetrack from	SHR-60 514460 AWP Proj: 6657' at 4903.00 MD

WELLPATH DATA (341 stations) † = interpolated/extrapolated station												
MD (ft)	Inclination (°)	Azimuth (°)	TVD (ft)	TVDS (ft)	Vert Sect (ft)	North (ft)	East (ft)	DLS (°/100ft)	Build Rate (°/100ft)	Turn Rate (°/100ft)	Comments	
0.00†	0.00	157.80	0.00	-1027.00	0.00	0.00	0.00	0.00	0.00	0.00		
16.00	0.00	157.80	16.00	-1011.00	0.00	0.00	0.00	0.00	0.00	0.00		
103.00	0.39	157.80	103.00	-924.00	0.30	-0.27	0.11	0.45	0.45	181.38	VES Gyro <8-3/4"> (103'-6603')	
203.00	0.37	160.43	203.00	-824.00	0.96	-0.89	0.35	0.03	-0.02	2.63		
303.00	0.29	167.79	303.00	-724.00	1.53	-1.45	0.51	0.09	-0.08	7.36		
403.00	0.25	203.50	402.99	-624.01	1.93	-1.89	0.48	0.17	-0.04	35.71		
503.00	0.19	183.94	502.99	-524.01	2.23	-2.26	0.38	0.10	-0.06	-19.56		
603.00	0.11	123.79	602.99	-424.01	2.46	-2.48	0.45	0.17	-0.08	-60.15		
703.00	0.17	72.44	702.99	-324.01	2.55	-2.49	0.67	0.13	0.06	-51.35		
803.00	0.42	308.87	802.99	-224.01	2.24	-2.21	0.52	0.53	0.25	-123.57		
903.00	0.26	65.16	902.99	-124.01	1.91	-1.89	0.44	0.58	-0.16	116.29		
1003.00	0.23	335.06	1002.99	-24.01	1.70	-1.61	0.57	0.35	-0.03	-90.10		
1103.00	0.56	333.10	1102.99	75.99	1.01	-0.99	0.26	0.33	0.33	-1.96		
1203.00	0.48	341.88	1202.98	175.98	0.11	-0.16	-0.09	0.11	-0.08	8.78		
1303.00	0.48	335.87	1302.98	275.98	-0.73	0.62	-0.39	0.05	0.00	-6.01		
1403.00	0.55	321.21	1402.98	375.98	-1.61	1.38	-0.86	0.15	0.07	-14.66		
1503.00	0.59	316.69	1502.97	475.97	-2.55	2.13	-1.52	0.06	0.04	-4.52		
1603.00	0.45	328.67	1602.97	575.97	-3.42	2.84	-2.08	0.18	-0.14	11.98		
1703.00	0.41	336.24	1702.96	675.96	-4.16	3.50	-2.42	0.07	-0.04	7.57		
1803.00	0.52	315.56	1802.96	775.96	-4.94	4.15	-2.89	0.20	0.11	-20.68		
1903.00	0.59	306.67	1902.96	875.96	-5.81	4.79	-3.62	0.11	0.07	-8.89		
2003.00	0.67	307.56	2002.95	975.95	-6.76	5.45	-4.49	0.08	0.08	0.89		
2103.00	0.81	309.78	2102.94	1075.94	-7.89	6.26	-5.50	0.14	0.14	2.22		
2203.00	0.90	305.36	2202.93	1175.93	-9.18	7.16	-6.68	0.11	0.09	-4.42		
2303.00	0.89	309.86	2302.92	1275.92	-10.53	8.12	-7.92	0.07	-0.01	4.50		
2403.00	0.81	304.08	2402.91	1375.91	-11.81	9.01	-9.10	0.12	-0.08	-5.78		
2503.00	0.79	306.07	2502.90	1475.90	-12.99	9.81	-10.24	0.03	-0.02	1.99		
2603.00	0.78	301.50	2602.89	1575.89	-14.13	10.57	-11.38	0.06	-0.01	-4.57		
2703.00	0.85	298.83	2702.88	1675.88	-15.26	11.29	-12.61	0.08	0.07	-2.67		
2803.00	0.83	295.71	2802.87	1775.87	-16.38	11.96	-13.91	0.05	-0.02	-3.12		

RECEIVED
Office of Oil and Gas

NOV 30 2018

WV Department of
Environmental Protection



Where energy meets innovation.

Actual Wellpath Report

SHR-60 514460 ST01 AWP Proj: 21001'

Page 3 of 15



REFERENCE WELLPATH IDENTIFICATION

Operator	EQT	Slot	Slot 514460
Area	Tyler County, WV	Well	SHR-60 514460 ST01
Field	Tyler	Wellbore	SHR-60 514460 ST01 AWB
Facility	SHR-60 Pad	Sidetrack from	SHR-60 514460 AWP Proj: 6657' at 4903.00 MD

WELLPATH DATA (341 stations)

MD [ft]	Inclination [°]	Azimuth [°]	TVD [ft]	TVDSS [ft]	Vert Sect [ft]	North [ft]	East [ft]	DLS [°/100ft]	Build Rate [°/100ft]	Turn Rate [°/100ft]	Comments
2903.00	0.630	292.140	2902.86	1875.86	-17.31	12.48	-15.08	0.21	-0.20	-3.57	
3003.00	0.430	277.210	3002.86	1975.86	-17.88	12.73	-15.96	0.24	-0.20	-14.93	
3103.00	0.430	270.420	3102.85	2075.85	-18.21	12.78	-16.71	0.05	0.00	-6.79	
3203.00	0.380	261.340	3202.85	2175.85	-18.44	12.74	-17.41	0.08	-0.05	-9.08	
3303.00	0.380	260.720	3302.85	2275.85	-18.60	12.63	-18.06	0.00	0.00	-0.62	
3403.00	0.370	257.070	3402.85	2375.85	-18.73	12.51	-18.71	0.03	-0.01	-3.65	
3503.00	0.400	250.000	3502.84	2475.84	-18.79	12.32	-19.35	0.06	0.03	-7.07	
3603.00	0.420	249.520	3602.84	2575.84	-18.82	12.07	-20.02	0.02	0.02	-0.48	
3703.00	0.460	234.110	3702.84	2675.84	-18.74	11.71	-20.69	0.12	0.04	-15.41	
3803.00	0.470	222.660	3802.83	2775.83	-18.48	11.17	-21.29	0.09	0.01	-11.45	
3903.00	0.510	222.320	3902.83	2875.83	-18.12	10.54	-21.87	0.04	0.04	-0.34	
4003.00	0.520	226.690	4002.83	2975.83	-17.77	9.90	-22.50	0.04	0.01	4.37	
4103.00	0.550	220.560	4102.82	3075.82	-17.39	9.22	-23.14	0.06	0.03	-6.13	
4203.00	0.560	223.600	4202.82	3175.82	-16.98	8.50	-23.79	0.03	0.01	3.04	
4303.00	0.720	216.280	4302.81	3275.81	-16.45	7.64	-24.50	0.18	0.16	-7.32	
4403.00	0.940	208.580	4402.80	3375.80	-15.61	6.42	-25.26	0.25	0.22	-7.70	
4503.00	0.990	207.760	4502.79	3475.79	-14.55	4.93	-26.06	0.05	0.05	-0.82	
4603.00	0.980	206.320	4602.77	3575.77	-13.43	3.40	-26.84	0.03	-0.01	-1.44	
4703.00	0.990	206.790	4702.76	3675.76	-12.31	1.86	-27.61	0.01	0.01	0.47	
4803.00	0.930	201.990	4802.74	3775.74	-11.17	0.34	-28.30	0.10	-0.06	-4.60	
4903.00	0.940	202.640	4902.73	3875.73	-10.01	-1.17	-28.92	0.01	0.01	0.65	Gyro Tie In=4903' MD
4993.00	0.890	197.450	4992.72	3965.72	-8.95	-2.52	-29.41	0.11	-0.06	-5.77	KOP 1=4993' MD
5024.00	1.020	238.490	5023.71	3996.71	-8.73	-2.89	-29.72	2.20	0.42	132.39	
5055.00	2.780	288.520	5054.70	4027.70	-9.18	-2.80	-30.67	7.30	5.68	161.39	
5087.00	5.160	303.710	5086.62	4059.62	-10.88	-1.75	-32.60	8.07	7.44	47.47	
5118.00	7.150	305.350	5117.44	4090.44	-13.68	0.14	-35.34	6.44	6.42	5.29	
5150.00	8.950	306.710	5149.12	4122.12	-17.50	2.78	-38.96	5.66	5.62	4.25	
5181.00	11.070	310.390	5179.65	4152.65	-22.23	6.15	-43.16	7.14	6.84	11.87	
5213.00	13.200	316.890	5210.93	4183.93	-28.39	10.81	-48.00	7.90	6.66	20.31	
5246.00	15.550	323.550	5241.93	4214.93	-35.97	16.93	-53.04	8.97	7.34	20.81	

RECEIVED
Office of Oil and Gas

NOV 30 2018

WV Department of
Environmental Protection



Where energy meets innovation.

Actual Wellpath Report

SHR-60 514460 ST01 AWP Proj: 21001'

Page 4 of 15



REFERENCE WELLPATH IDENTIFICATION			
Operator	EQT	Slot	Slot 514460
Area	Tyler County, WV	Well	SHR-60 514460 ST01
Field	Tyler	Wellbore	SHR-60 514460 ST01 AWB
Facility	SHR-60 Pad	Sidetrack from	SHR-60 514460 AWP Proj: 6657' at 4903.00 MD

WELLPATH DATA (341 stations)											
MD [ft]	Inclination [°]	Azimuth [°]	TVD [ft]	TVDSS [ft]	Vert Sect [ft]	North [ft]	East [ft]	DLS [°/100ft]	Build Rate [°/100ft]	Turn Rate [°/100ft]	Comments
5276.00	17.840	328.110	5271.63	4244.63	-44.69	24.30	-58.02	8.51	7.39	14.71	
5307.00	18.030	328.820	5301.12	4274.12	-54.12	32.44	-63.01	0.93	0.61	2.29	
5339.00	17.950	327.180	5331.55	4304.55	-63.87	40.82	-68.25	1.60	-0.25	-5.12	
5370.00	18.310	325.150	5361.02	4334.02	-73.33	48.83	-73.62	2.35	1.16	-6.55	
5401.00	18.210	323.330	5390.45	4363.45	-82.78	56.71	-79.30	1.87	-0.32	-5.87	
5433.00	18.340	322.810	5420.84	4393.84	-92.50	64.73	-85.32	0.65	0.41	-1.62	
5465.00	18.370	322.670	5451.21	4424.21	-102.25	72.75	-91.43	0.17	0.09	-0.44	
5496.00	18.340	323.840	5480.64	4453.64	-111.71	80.57	-97.27	1.19	-0.10	3.77	
5528.00	18.360	325.540	5511.01	4484.01	-121.54	88.79	-103.09	1.67	0.06	5.31	
5559.00	18.380	328.100	5540.43	4513.43	-131.14	96.97	-108.43	2.60	0.06	8.26	
5591.00	18.380	328.470	5570.80	4543.80	-141.10	105.55	-113.74	0.36	0.00	1.16	
5623.00	18.260	328.040	5601.18	4574.18	-151.03	114.11	-119.03	0.56	-0.37	-1.34	
5654.00	18.300	327.140	5630.61	4603.61	-160.61	122.31	-124.24	0.92	0.13	-2.90	
5686.00	18.250	326.160	5661.00	4634.00	-170.46	130.70	-129.76	0.97	-0.16	-3.06	
5718.00	18.380	324.970	5691.38	4664.38	-180.30	138.99	-135.44	1.24	0.41	-3.72	
5749.00	18.190	323.430	5720.81	4693.81	-189.77	146.88	-141.13	1.67	-0.61	-4.97	
5781.00	17.920	322.000	5751.24	4724.24	-199.36	154.77	-147.14	1.62	-0.84	-4.47	
5810.00	17.730	320.820	5778.84	4751.84	-207.89	161.71	-152.67	1.41	-0.66	-4.07	
5843.00	18.450	320.150	5810.21	4783.21	-217.69	169.61	-159.20	2.27	2.18	-2.03	
5875.00	18.110	319.230	5840.60	4813.60	-227.25	177.26	-165.69	1.39	-1.06	-2.87	KOP 2=5875' MD
5907.00	14.990	315.740	5871.27	4844.27	-235.82	184.00	-171.83	10.23	-9.75	-10.91	
5938.00	11.410	308.270	5901.45	4874.45	-242.23	188.77	-177.03	12.77	-11.55	-24.10	
5970.00	8.640	296.490	5932.96	4905.96	-246.81	191.80	-181.67	10.73	-8.66	-36.81	
6001.00	6.660	280.400	5963.68	4936.68	-249.54	193.17	-185.52	9.35	-6.39	-51.90	
6033.00	5.210	260.190	5995.52	4968.52	-250.87	193.25	-188.78	7.88	-4.53	-63.16	
6064.00	5.090	230.640	6026.40	4999.40	-250.79	192.14	-191.23	8.47	-0.39	-95.32	
6096.00	6.760	214.380	6058.23	5031.23	-249.35	189.69	-193.39	7.35	5.22	-50.81	
6127.00	9.020	205.820	6088.93	5061.93	-246.74	185.99	-195.48	8.20	7.29	-27.61	
6159.00	10.390	200.180	6120.47	5093.47	-242.95	181.03	-197.57	5.21	4.28	-17.62	
6190.00	10.920	188.070	6150.94	5123.94	-238.37	175.49	-198.95	7.41	1.71	-39.06	

RECEIVED
Office of Oil and Gas

NOV 30 2018

WV Department of
Environmental Protection



Where energy meets innovation.

Actual Wellpath Report

SHR-60 514460 ST01 AWP Proj: 21001'

Page 5 of 15



REFERENCE WELLPATH IDENTIFICATION

Operator	EQT	Slot	Slot 514460
Area	Tyler County, WV	Well	SHR-60 514460 ST01
Field	Tyler	Wellbore	SHR-60 514460 ST01 AWB
Facility	SHR-60 Pad	Sidetrack from	SHR-60 514460 AWP Proj: 6657' at 4903.00 MD

WELLPATH DATA (341 stations)

MD [ft]	Inclination [°]	Azimuth [°]	TVD [ft]	TVDSS [ft]	Vert Sect [ft]	North [ft]	East [ft]	DLS [°/100ft]	Build Rate [°/100ft]	Turn Rate [°/100ft]	Comments
6222.00	12.030	175.530	6182.31	5155.31	-232.59	169.17	-199.11	8.51	3.47	-39.19	
6251.00	14.240	169.090	6210.55	5183.55	-226.22	162.65	-198.20	9.13	7.62	-22.21	
6283.00	16.740	166.860	6241.38	5214.38	-217.82	154.30	-196.41	8.03	7.81	-6.97	
6314.00	20.300	165.410	6270.77	5243.77	-208.09	144.74	-194.04	11.58	11.48	-4.68	
6346.00	24.150	163.880	6300.39	5273.39	-196.08	133.08	-190.82	12.17	12.03	-4.78	
6378.00	28.110	162.720	6329.12	5302.12	-182.06	119.58	-186.76	12.48	12.37	-3.63	
6409.00	31.890	161.030	6355.96	5328.96	-166.61	104.86	-181.93	12.49	12.19	-5.45	
6441.00	36.050	159.860	6382.49	5355.49	-148.76	88.02	-175.94	13.16	13.00	-3.66	
6472.00	40.400	159.150	6406.84	5379.84	-129.60	70.06	-169.22	14.10	14.03	-2.29	
6503.00	44.780	158.330	6429.66	5402.66	-108.63	50.52	-161.61	14.24	14.13	-2.65	
6535.00	49.050	157.350	6451.51	5424.51	-85.26	28.88	-152.79	13.53	13.34	-3.06	
6567.00	53.040	157.080	6471.62	5444.62	-60.38	5.94	-143.15	12.49	12.47	-0.84	
6599.00	57.130	156.970	6489.94	5462.94	-34.15	-18.21	-132.91	12.78	12.78	-0.34	
6630.00	61.240	156.940	6505.81	5478.81	-7.53	-42.70	-122.49	13.26	13.26	-0.10	
6662.00	64.990	157.170	6520.28	5493.28	21.00	-68.98	-111.37	11.74	11.72	0.72	
6694.00	68.250	157.210	6532.98	5505.98	50.37	-96.06	-99.98	10.19	10.19	0.13	
6725.00	69.110	157.440	6544.25	5517.25	79.25	-122.70	-88.85	2.86	2.77	0.74	
6757.00	69.080	157.650	6555.67	5528.67	109.14	-150.33	-77.43	0.62	-0.09	0.66	
6789.00	71.030	157.890	6566.58	5539.58	139.22	-178.17	-66.05	6.13	6.09	0.75	
6821.00	73.720	158.210	6576.27	5549.27	169.71	-206.46	-54.65	8.46	8.41	1.00	
6852.00	77.180	158.480	6584.06	5557.06	199.71	-234.34	-43.58	11.19	11.16	0.87	
6884.00	81.290	159.070	6590.03	5563.03	231.13	-263.64	-32.21	12.97	12.84	1.84	
6915.00	85.160	159.090	6593.69	5566.69	261.90	-292.39	-21.22	12.48	12.48	0.06	
6947.00	89.320	159.100	6595.23	5568.23	293.84	-322.24	-9.81	13.00	13.00	0.03	LP=6947' MD / 6595.23' TVD
6978.00	90.150	158.540	6595.37	5568.37	324.83	-351.15	1.39	3.23	2.68	-1.81	
7041.00	89.820	157.120	6595.39	5568.39	387.83	-409.49	25.16	2.31	-0.52	-2.25	
7104.00	89.750	155.990	6595.63	5568.63	450.82	-467.28	50.22	1.80	-0.11	-1.79	
7167.00	89.630	155.380	6595.97	5568.97	513.79	-524.69	76.16	0.99	-0.19	-0.97	
7230.00	89.660	154.900	6596.36	5569.36	576.73	-581.86	102.65	0.76	0.05	-0.76	
7294.00	89.630	154.890	6596.75	5569.75	640.67	-639.81	129.80	0.05	-0.05	-0.02	

RECEIVED
Office of Oil and Gas

NOV 30 2018

WV Department of
Environmental Protection



Where energy meets innovation.

Actual Wellpath Report

SHR-60 514460 ST01 AWP Proj: 21001'

Page 6 of 15



REFERENCE WELLPATH IDENTIFICATION			
Operator	EQT	Slot	Slot 514460
Area	Tyler County, WV	Well	SHR-60 514460 ST01
Field	Tyler	Wellbore	SHR-60 514460 ST01 AWB
Facility	SHR-60 Pad	Sidetrack from	SHR-60 514460 AWP Proj: 6657' at 4903.00 MD

WELLPATH DATA (341 stations)											
MD [ft]	Inclination [°]	Azimuth [°]	TVD [ft]	TVDSS [ft]	Vert Sect [ft]	North [ft]	East [ft]	DLS [°/100ft]	Build Rate [°/100ft]	Turn Rate [°/100ft]	Comments
7348.00	89.660	155.820	6597.09	5570.09	694.63	-688.89	152.32	1.72	0.06	1.72	
7411.00	89.660	157.230	6597.46	5570.46	757.62	-746.67	177.41	2.24	0.00	2.24	
7474.00	89.660	157.770	6597.84	5570.84	820.62	-804.87	201.52	0.86	0.00	0.86	
7538.00	89.660	157.650	6598.22	5571.22	884.62	-864.09	225.80	0.19	0.00	-0.19	
7601.00	89.600	158.000	6598.62	5571.62	947.62	-922.43	249.58	0.56	-0.10	0.56	
7665.00	89.850	158.290	6598.93	5571.93	1011.61	-981.83	273.40	0.60	0.39	0.45	
7728.00	90.220	158.450	6598.89	5571.89	1074.60	-1040.39	296.62	0.64	0.59	0.25	
7790.00	90.030	159.360	6598.76	5571.76	1136.58	-1098.24	318.94	1.50	-0.31	1.47	
7853.00	90.280	161.100	6598.59	5571.59	1199.50	-1157.52	340.25	2.79	0.40	2.76	
7916.00	90.180	160.740	6598.33	5571.33	1262.39	-1217.06	360.84	0.59	-0.16	-0.57	
7979.00	90.250	159.290	6598.10	5571.10	1325.32	-1276.26	382.37	2.30	0.11	-2.30	
8042.00	90.460	158.190	6597.71	5570.71	1388.30	-1334.97	405.21	1.78	0.33	-1.75	
8106.00	90.310	156.420	6597.28	5570.28	1452.30	-1394.02	429.90	2.78	-0.23	-2.77	
8168.00	90.180	155.330	6597.01	5570.01	1514.28	-1450.60	455.25	1.77	-0.21	-1.76	
8231.00	90.090	155.360	6596.86	5569.86	1577.23	-1507.86	481.53	0.15	-0.14	0.05	
8294.00	90.220	155.890	6596.69	5569.69	1640.20	-1565.24	507.53	0.87	0.21	0.84	
8357.00	90.150	156.160	6596.49	5569.49	1703.18	-1622.80	533.13	0.44	-0.11	0.43	
8420.00	90.090	156.010	6596.36	5569.36	1766.16	-1680.39	558.66	0.26	-0.10	-0.24	
8483.00	90.280	155.650	6596.15	5569.15	1829.14	-1737.87	584.46	0.65	0.30	-0.57	
8546.00	90.250	155.070	6595.86	5568.86	1892.09	-1795.13	610.72	0.92	-0.05	-0.92	
8609.00	90.180	153.960	6595.62	5568.62	1955.01	-1852.00	637.83	1.77	-0.11	-1.76	
8672.00	90.220	153.480	6595.40	5568.40	2017.88	-1908.49	665.72	0.76	0.06	-0.76	
8735.00	90.280	152.330	6595.13	5568.13	2080.68	-1964.57	694.42	1.83	0.10	-1.83	
8799.00	90.120	152.940	6594.91	5567.91	2144.45	-2021.41	723.84	0.99	-0.25	0.95	
8862.00	90.060	153.940	6594.81	5567.81	2207.29	-2077.76	752.01	1.59	-0.10	1.59	
8925.00	90.060	155.190	6594.74	5567.74	2270.21	-2134.66	779.06	1.98	0.00	1.98	
8988.00	89.940	156.350	6594.74	5567.74	2333.18	-2192.10	804.92	1.85	-0.19	1.84	
9051.00	90.000	157.350	6594.77	5567.77	2396.18	-2250.03	829.68	1.59	0.10	1.59	
9114.00	90.090	157.890	6594.73	5567.73	2459.18	-2308.29	853.67	0.87	0.14	0.86	
9177.00	90.150	157.270	6594.59	5567.59	2522.18	-2366.52	877.70	0.99	0.10	-0.98	

RECEIVED
Office of Oil and Gas

NOV 30 2018

WV Department of
Environmental Protection



Where energy meets innovation.

Actual Wellpath Report

SHR-60 514460 ST01 AWP Proj: 21001'

Page 7 of 15



REFERENCE WELLPATH IDENTIFICATION

Operator	EQT	Slot	Slot 514460
Area	Tyler County, WV	Well	SHR-60 514460 ST01
Field	Tyler	Wellbore	SHR-60 514460 ST01 AWP
Facility	SHR-60 Pad	Sidetrack from	SHR-60 514460 AWP Proj: 6657' at 4903.00 MD

WELLPATH DATA (341 stations)

MD [ft]	Inclination [°]	Azimuth [°]	TVD [ft]	TVDSS [ft]	Vert Sect [ft]	North [ft]	East [ft]	DLS ["/100ft]	Build Rate ["/100ft]	Turn Rate ["/100ft]	Comments
9240.00	90.120	156.780	6594.44	5567.44	2585.18	-2424.53	902.29	0.78	-0.05	-0.78	
9304.00	90.090	156.580	6594.33	5567.33	2649.17	-2483.30	927.63	0.32	-0.05	-0.31	
9366.00	89.940	156.640	6594.31	5567.31	2711.16	-2540.20	952.24	0.26	-0.24	0.10	
9429.00	90.120	157.740	6594.28	5567.28	2774.16	-2598.27	976.66	1.77	0.29	1.75	
9492.00	90.090	158.460	6594.16	5567.16	2837.16	-2656.73	1000.16	1.14	-0.05	1.14	
9555.00	90.090	159.070	6594.06	5567.06	2900.14	-2715.45	1022.98	0.97	0.00	0.97	
9618.00	90.090	158.930	6593.96	5566.96	2963.12	-2774.26	1045.55	0.22	0.00	-0.22	
9681.00	90.120	158.040	6593.85	5566.85	3026.11	-2832.87	1068.66	1.41	0.05	-1.41	
9744.00	90.090	158.370	6593.73	5566.73	3089.10	-2891.37	1092.05	0.53	-0.05	0.52	
9807.00	90.030	158.960	6593.67	5566.67	3152.09	-2950.05	1114.97	0.94	-0.10	0.94	
9870.00	90.150	159.480	6593.57	5566.57	3215.06	-3008.95	1137.32	0.85	0.19	0.83	
9933.00	90.120	158.620	6593.42	5566.42	3278.03	-3067.79	1159.85	1.37	-0.05	-1.37	
9996.00	90.180	157.200	6593.26	5566.26	3341.03	-3126.16	1183.54	2.26	0.10	-2.25	
10059.00	90.090	155.530	6593.11	5566.11	3404.01	-3183.88	1208.80	2.65	-0.14	-2.65	
10122.00	90.060	154.750	6593.02	5566.02	3466.96	-3241.04	1235.28	1.24	-0.05	-1.24	
10185.00	89.970	156.060	6593.01	5566.01	3529.92	-3298.32	1261.50	2.08	-0.14	2.08	
10248.00	90.090	157.030	6592.98	5565.98	3592.91	-3356.11	1286.58	1.55	0.19	1.54	
10311.00	90.060	157.210	6592.89	5565.89	3655.91	-3414.16	1311.07	0.29	-0.05	0.29	
10375.00	90.030	158.560	6592.84	5565.84	3719.91	-3473.45	1335.16	2.11	-0.05	2.11	
10438.00	90.120	160.150	6592.76	5565.76	3782.87	-3532.40	1357.38	2.53	0.14	2.52	
10501.00	90.150	159.100	6592.61	5565.61	3845.82	-3591.46	1379.31	1.67	0.05	-1.67	
10564.00	90.520	155.990	6592.24	5565.24	3908.82	-3649.67	1403.37	4.97	0.59	-4.94	
10628.00	90.180	153.950	6591.85	5564.85	3972.75	-3707.66	1430.45	3.23	-0.53	-3.19	
10690.00	89.970	153.060	6591.77	5564.77	4034.60	-3763.15	1458.10	1.47	-0.34	-1.44	
10753.00	90.090	154.080	6591.74	5564.74	4097.46	-3819.56	1486.15	1.63	0.19	1.62	
10818.00	90.060	154.310	6591.65	5564.65	4162.35	-3878.08	1514.44	0.36	-0.05	0.35	
10879.00	90.090	155.730	6591.57	5564.57	4223.30	-3933.37	1540.20	2.33	0.05	2.33	
10941.00	90.000	157.160	6591.52	5564.52	4285.29	-3990.20	1564.98	2.31	-0.15	2.31	
11004.00	90.060	158.470	6591.49	5564.49	4348.28	-4048.54	1588.76	2.08	0.10	2.08	
11067.00	90.060	159.350	6591.43	5564.43	4411.26	-4107.32	1611.43	1.40	0.00	1.40	

RECEIVED
Office of Oil and Gas

NOV 30 2018

WV Department of
Environmental Protection



Where energy meets innovation.

Actual Wellpath Report

SHR-60 514460 ST01 AWP Proj: 21001'

Page 8 of 15



REFERENCE WELLPATH IDENTIFICATION			
Operator	EQT	Slot	Slot 514460
Area	Tyler County, WV	Well	SHR-60 514460 ST01
Field	Tyler	Wellbore	SHR-60 514460 ST01 AWB
Facility	SHR-60 Pad	Sidetrack from	SHR-60 514460 AWP Proj: 6657' at 4903.00 MD

WELLPATH DATA (341 stations)											
MD [ft]	Inclination [°]	Azimuth [°]	TVD [ft]	TVDSS [ft]	Vert Sect [ft]	North [ft]	East [ft]	DLS [°/100ft]	Build Rate [°/100ft]	Turn Rate [°/100ft]	Comments
11130.00	90.150	158.700	6591.31	5564.31	4474.24	-4166.14	1633.99	1.04	0.14	-1.03	
11194.00	90.280	159.470	6591.07	5564.07	4538.21	-4225.92	1656.83	1.22	0.20	-1.20	
11257.00	90.520	158.150	6590.63	5563.63	4601.19	-4284.66	1679.60	2.13	0.38	-2.10	
11320.00	90.180	155.650	6590.25	5563.25	4664.18	-4342.61	1704.32	4.00	-0.54	-3.97	
11383.00	89.910	155.070	6590.20	5563.20	4727.14	-4399.87	1730.58	1.02	-0.43	-0.92	
11446.00	89.750	155.150	6590.38	5563.38	4790.09	-4457.02	1757.10	0.28	-0.25	0.13	
11509.00	89.850	155.760	6590.60	5563.60	4853.05	-4514.32	1783.27	0.98	0.16	0.97	
11573.00	89.850	155.990	6590.77	5563.77	4917.02	-4572.73	1809.43	0.36	0.00	0.36	
11635.00	89.850	156.080	6590.93	5563.93	4979.00	-4629.39	1834.61	0.15	0.00	0.15	
11698.00	89.720	157.500	6591.17	5564.17	5042.00	-4687.29	1859.44	2.26	-0.21	2.25	
11762.00	89.820	159.790	6591.43	5564.43	5105.98	-4746.89	1882.74	3.58	0.16	3.58	
11826.00	89.780	161.690	6591.65	5564.65	5169.87	-4807.30	1903.85	2.97	-0.06	2.97	
11889.00	89.600	160.990	6591.99	5564.99	5232.72	-4866.99	1924.01	1.15	-0.29	-1.11	
11952.00	89.720	158.980	6592.36	5565.36	5295.66	-4926.18	1945.57	3.20	0.19	-3.19	
12015.00	89.540	156.900	6592.77	5565.77	5358.65	-4984.56	1969.23	3.31	-0.29	-3.30	
12078.00	89.660	157.080	6593.21	5566.21	5421.65	-5042.55	1993.85	0.34	0.19	0.29	
12141.00	89.690	157.270	6593.57	5566.57	5484.64	-5100.62	2018.29	0.31	0.05	0.30	
12205.00	89.690	156.150	6593.91	5566.91	5548.64	-5159.40	2043.60	1.75	0.00	-1.75	
12269.00	89.780	154.780	6594.21	5567.21	5612.60	-5217.62	2070.17	2.15	0.14	-2.14	
12332.00	89.750	154.560	6594.47	5567.47	5675.52	-5274.56	2097.12	0.35	-0.05	-0.35	
12395.00	89.450	154.620	6594.91	5567.91	5738.44	-5331.47	2124.16	0.49	-0.48	0.10	
12458.00	89.420	155.080	6595.53	5568.53	5801.37	-5388.49	2150.93	0.73	-0.05	0.73	
12521.00	89.380	155.110	6596.19	5569.19	5864.32	-5445.63	2177.46	0.08	-0.06	0.05	
12585.00	89.480	156.120	6596.83	5569.83	5928.28	-5503.92	2203.88	1.59	0.16	1.58	
12649.00	89.510	157.990	6597.39	5570.39	5992.27	-5562.85	2228.83	2.92	0.05	2.92	
12713.00	89.540	158.660	6597.92	5570.92	6056.26	-5622.32	2252.47	1.05	0.05	1.05	
12776.00	89.570	157.000	6598.41	5571.41	6119.26	-5680.66	2276.24	2.64	0.05	-2.63	
12839.00	89.350	157.700	6599.00	5572.00	6182.25	-5738.80	2300.50	1.16	-0.35	1.11	
12902.00	89.510	159.520	6599.63	5572.63	6245.24	-5797.45	2323.47	2.90	0.25	2.89	
12966.00	89.510	159.160	6600.18	5573.18	6309.20	-5857.33	2346.05	0.56	0.00	-0.56	

RECEIVED
Office of Oil and Gas

NOV 30 2018

WV Department of
Environmental Protection



Where energy meets innovation.

Actual Wellpath Report

SHR-60 514460 ST01 AWP Proj: 21001'

Page 9 of 15



REFERENCE WELLPATH IDENTIFICATION

Operator	EQT	Slot	Slot 514460
Area	Tyler County, WV	Well	SHR-60 514460 ST01
Field	Tyler	Wellbore	SHR-60 514460 ST01 AWB
Facility	SHR-60 Pad	Sidetrack from	SHR-60 514460 AWP Proj: 6657' at 4903.00 MD

WELLPATH DATA (341 stations)

MD [ft]	Inclination [°]	Azimuth [°]	TVD [ft]	TVDSS [ft]	Vert Sect [ft]	North [ft]	East [ft]	DLS [°/100ft]	Build Rate [°/100ft]	Turn Rate [°/100ft]	Comments
13029.00	89.600	157.560	6600.67	5573.67	6372.19	-5915.89	2369.28	2.54	0.14	-2.54	
13092.00	89.480	156.530	6601.17	5574.17	6435.18	-5973.90	2393.85	1.65	-0.19	-1.63	
13156.00	89.450	155.970	6601.77	5574.77	6499.16	-6032.47	2419.63	0.88	-0.05	-0.88	
13219.00	89.510	155.670	6602.34	5575.34	6562.14	-6089.94	2445.43	0.49	0.10	-0.48	
13282.00	89.540	155.670	6602.86	5575.86	6625.10	-6147.35	2471.39	0.05	0.05	0.00	
13346.00	89.510	153.470	6603.40	5576.40	6689.02	-6205.14	2498.87	3.44	-0.05	-3.44	
13408.00	89.350	152.300	6604.01	5577.01	6750.82	-6260.32	2527.12	1.90	-0.26	-1.89	
13472.00	89.420	154.570	6604.70	5577.70	6814.65	-6317.56	2555.74	3.55	0.11	3.55	
13535.00	89.420	156.300	6605.34	5578.34	6877.61	-6374.85	2581.93	2.75	0.00	2.75	
13598.00	89.420	157.050	6605.97	5578.97	6940.60	-6432.70	2606.87	1.19	0.00	1.19	
13662.00	89.510	157.040	6606.57	5579.57	7004.59	-6491.63	2631.83	0.14	0.14	-0.02	
13724.00	89.510	156.840	6607.10	5580.10	7066.59	-6548.67	2656.11	0.32	0.00	-0.32	
13788.00	89.720	157.480	6607.53	5580.53	7130.59	-6607.65	2680.96	1.05	0.33	1.00	
13851.00	89.660	158.150	6607.87	5580.87	7193.58	-6665.99	2704.74	1.07	-0.10	1.06	
13914.00	89.630	159.500	6608.26	5581.26	7256.56	-6724.73	2727.50	2.14	-0.05	2.14	
13978.00	89.690	161.020	6608.64	5581.64	7320.48	-6784.97	2749.12	2.38	0.09	2.38	
14041.00	89.850	160.200	6608.90	5581.90	7383.39	-6844.39	2770.03	1.33	0.25	-1.30	
14103.00	89.750	158.360	6609.11	5582.11	7445.35	-6902.38	2791.97	2.97	-0.16	-2.97	
14167.00	89.780	157.030	6609.38	5582.38	7509.35	-6961.59	2816.25	2.08	0.05	-2.08	
14230.00	89.850	156.260	6609.58	5582.58	7572.34	-7019.43	2841.23	1.23	0.11	-1.22	
14293.00	89.750	155.700	6609.80	5582.80	7635.32	-7076.97	2866.87	0.90	-0.16	-0.89	
14357.00	89.720	155.550	6610.09	5583.09	7699.29	-7135.27	2893.29	0.24	-0.05	-0.23	
14421.00	89.750	155.760	6610.39	5583.39	7763.25	-7193.57	2919.67	0.33	0.05	0.33	
14484.00	89.820	155.630	6610.63	5583.63	7826.22	-7250.99	2945.60	0.23	0.11	-0.21	
14547.00	89.880	156.640	6610.79	5583.79	7889.21	-7308.60	2971.09	1.61	0.10	1.60	
14610.00	90.000	157.300	6610.86	5583.86	7952.20	-7366.58	2995.73	1.06	0.19	1.05	
14674.00	89.940	158.460	6610.89	5583.89	8016.20	-7425.87	3019.83	1.81	-0.09	1.81	
14738.00	89.970	158.860	6610.94	5583.94	8080.19	-7485.48	3043.12	0.63	0.05	0.63	
14801.00	90.220	158.680	6610.84	5583.84	8143.17	-7544.21	3065.94	0.49	0.40	-0.29	
14864.00	90.030	158.700	6610.70	5583.70	8206.15	-7602.90	3088.83	0.30	-0.30	0.03	

RECEIVED
Office of Oil and Gas
NOV 30 2018
WV Department of
Environmental Protection



Where energy meets innovation.

Actual Wellpath Report

SHR-60 514460 ST01 AWP Proj: 21001'

Page 10 of 15



REFERENCE WELLPATH IDENTIFICATION			
Operator	EQT	Slot	Slot 514460
Area	Tyler County, WV	Well	SHR-60 514460 ST01
Field	Tyler	Wellbore	SHR-60 514460 ST01 AWB
Facility	SHR-60 Pad	Sidetrack from	SHR-60 514460 AWP Proj: 6657' at 4903.00 MD

WELLPATH DATA (341 stations)											
MD [ft]	Inclination [°]	Azimuth [°]	TVD [ft]	TVDSS [ft]	Vert Sect [ft]	North [ft]	East [ft]	DLS [°/100ft]	Build Rate [°/100ft]	Turn Rate [°/100ft]	Comments
14927.00	89.940	158.150	6610.72	5583.72	8269.15	-7661.48	3112.00	0.88	-0.14	-0.87	
14991.00	89.970	158.370	6610.77	5583.77	8333.14	-7720.93	3135.70	0.35	0.05	0.34	
15054.00	90.000	158.260	6610.78	5583.78	8396.13	-7779.47	3158.98	0.18	0.05	-0.17	
15117.00	90.060	156.890	6610.75	5583.75	8459.13	-7837.71	3183.01	2.18	0.10	-2.17	
15180.00	90.090	156.150	6610.67	5583.67	8522.12	-7895.49	3208.11	1.18	0.05	-1.17	
15243.00	89.970	156.070	6610.63	5583.63	8585.10	-7953.09	3233.63	0.23	-0.19	-0.13	
15307.00	89.940	155.490	6610.69	5583.69	8649.08	-8011.46	3259.88	0.91	-0.05	-0.91	
15370.00	89.910	154.790	6610.77	5583.77	8712.03	-8068.62	3286.37	1.11	-0.05	-1.11	
15433.00	89.940	153.720	6610.85	5583.85	8774.93	-8125.37	3313.73	1.70	0.05	-1.70	
15497.00	89.940	153.470	6610.92	5583.92	8838.78	-8182.69	3342.19	0.39	0.00	-0.39	
15560.00	90.000	153.270	6610.95	5583.95	8901.62	-8239.01	3370.43	0.33	0.10	-0.32	
15623.00	90.030	154.420	6610.93	5583.93	8964.50	-8295.56	3398.20	1.83	0.05	1.83	
15686.00	89.970	155.770	6610.93	5583.93	9027.44	-8352.70	3424.73	2.14	-0.10	2.14	
15750.00	89.910	156.440	6611.00	5584.00	9091.42	-8411.21	3450.66	1.05	-0.09	1.05	
15813.00	89.910	157.090	6611.10	5584.10	9154.42	-8469.10	3475.51	1.03	0.00	1.03	
15876.00	89.660	158.030	6611.34	5584.34	9217.42	-8527.33	3499.56	1.54	-0.40	1.49	
15939.00	89.690	158.270	6611.69	5584.69	9280.41	-8585.80	3523.00	0.38	0.05	0.38	
16002.00	89.720	158.530	6612.02	5585.02	9343.40	-8644.38	3546.20	0.42	0.05	0.41	
16066.00	89.690	159.710	6612.35	5585.35	9407.37	-8704.17	3569.01	1.84	-0.05	1.84	
16129.00	89.750	160.180	6612.66	5585.66	9470.31	-8763.35	3590.61	0.75	0.10	0.75	
16192.00	89.690	159.710	6612.96	5585.96	9533.25	-8822.53	3612.21	0.75	-0.10	-0.75	
16255.00	89.690	159.230	6613.30	5586.30	9596.21	-8881.53	3634.31	0.76	0.00	-0.76	
16318.00	89.750	158.540	6613.61	5586.61	9659.19	-8940.30	3657.00	1.10	0.10	-1.10	
16381.00	89.630	157.370	6613.95	5586.95	9722.19	-8998.69	3680.65	1.87	-0.19	-1.85	
16445.00	89.820	157.010	6614.26	5587.26	9785.18	-9057.68	3705.46	0.64	0.30	-0.56	
16508.00	89.690	157.470	6614.53	5587.53	9849.18	-9115.78	3729.83	0.76	-0.21	0.73	
16572.00	89.780	156.210	6614.83	5587.83	9913.18	-9174.62	3755.00	1.97	0.14	-1.97	
16635.00	89.780	154.960	6615.07	5588.07	9976.14	-9231.98	3781.04	1.98	0.00	-1.98	
16698.00	89.690	154.840	6615.36	5588.36	10039.08	-9289.03	3807.76	0.24	-0.14	-0.19	
16761.00	89.750	155.180	6615.67	5588.67	10102.02	-9346.13	3834.38	0.55	0.10	0.54	

RECEIVED
Office of Oil and Gas
NOV 30 2018
WV Department of
Environmental Protection



Where energy meets innovation.

Actual Wellpath Report

SHR-60 514460 ST01 AWP Proj: 21001'

Page 11 of 15



REFERENCE WELLPATH IDENTIFICATION			
Operator	EQT	Slot	Slot 514460
Area	Tyler County, WV	Well	SHR-60 514460 ST01
Field	Tyler	Wellbore	SHR-60 514460 ST01 AWB
Facility	SHR-60 Pad	Sidetrack from	SHR-60 514460 AWP Proj: 6657' at 4903.00 MD

WELLPATH DATA (341 stations)											
MD [ft]	Inclination [°]	Azimuth [°]	TVD [ft]	TVDSS [ft]	Vert Sect [ft]	North [ft]	East [ft]	DLS [°/100ft]	Build Rate [°/100ft]	Turn Rate [°/100ft]	Comments
16824.00	89.750	154.820	6615.94	5588.94	10164.96	-9403.23	3861.00	0.57	0.00	-0.57	
16887.00	89.750	153.950	6616.22	5589.22	10227.87	-9460.04	3888.24	1.38	0.00	-1.38	
16951.00	89.660	152.700	6616.55	5589.55	10291.70	-9517.22	3916.97	1.96	-0.14	-1.95	
17015.00	89.600	151.260	6616.96	5589.96	10355.41	-9573.72	3947.03	2.25	-0.09	-2.25	
17078.00	89.720	150.040	6617.33	5590.33	10417.96	-9628.63	3977.91	1.95	0.19	-1.94	
17141.00	89.420	152.990	6617.81	5590.81	10480.62	-9684.00	4007.95	4.71	-0.48	4.68	
17204.00	89.780	157.310	6618.25	5591.25	10543.55	-9741.15	4034.42	6.88	0.57	6.86	
17267.00	89.660	157.710	6618.55	5591.55	10606.55	-9799.36	4058.52	0.66	-0.19	0.63	
17330.00	89.630	156.370	6618.94	5591.94	10669.54	-9857.36	4083.10	2.13	-0.05	-2.13	
17394.00	89.660	155.660	6619.34	5592.34	10733.52	-9915.83	4109.11	1.11	0.05	-1.11	
17458.00	89.570	156.150	6619.77	5592.77	10797.50	-9974.26	4135.24	0.78	-0.14	0.77	
17521.00	89.690	157.420	6620.18	5593.18	10860.49	-10032.15	4160.07	2.02	0.19	2.02	
17584.00	89.690	158.860	6620.52	5593.52	10923.48	-10090.62	4183.53	2.29	0.00	2.29	
17647.00	89.720	159.120	6620.84	5593.84	10986.46	-10149.43	4206.11	0.42	0.05	0.41	
17711.00	89.720	158.870	6621.16	5594.16	11050.44	-10209.18	4229.06	0.39	0.00	-0.39	
17775.00	89.630	159.690	6621.52	5594.52	11114.40	-10269.04	4251.70	1.29	-0.14	1.28	
17838.00	89.690	161.580	6621.89	5594.89	11177.30	-10328.47	4272.59	3.00	0.10	3.00	
17901.00	89.690	159.590	6622.23	5595.23	11240.20	-10387.88	4293.53	3.16	0.00	-3.16	
17965.00	89.750	156.610	6622.55	5595.55	11304.19	-10447.26	4317.40	4.66	0.09	-4.66	
18029.00	89.630	155.360	6622.89	5595.89	11368.17	-10505.72	4343.44	1.96	-0.19	-1.95	
18092.00	89.690	154.680	6623.27	5596.27	11431.11	-10562.82	4370.05	1.08	0.10	-1.08	
18155.00	89.750	154.610	6623.57	5596.57	11494.03	-10619.75	4397.02	0.15	0.10	-0.11	
18219.00	89.720	158.670	6623.87	5596.87	11558.01	-10678.49	4422.39	6.34	-0.05	6.34	
18282.00	89.780	164.090	6624.15	5597.15	11620.84	-10738.17	4442.50	8.60	0.10	8.60	
18345.00	89.820	168.090	6624.37	5597.37	11683.28	-10799.05	4458.71	3.18	0.06	3.17	
18409.00	90.180	170.670	6624.37	5597.37	11746.10	-10861.72	4471.60	7.18	0.56	7.16	
18440.00	90.460	173.150	6624.19	5597.19	11776.11	-10892.41	4475.96	8.05	0.90	8.00	
18472.00	90.740	171.610	6623.86	5596.86	11807.03	-10924.12	4480.20	4.89	0.88	-4.81	
18504.00	89.880	168.170	6623.68	5596.68	11838.28	-10955.62	4485.82	11.08	-2.69	-10.75	
18536.00	89.660	164.180	6623.81	5596.81	11869.90	-10986.69	4493.46	12.49	-0.69	-12.47	

RECEIVED
Office of Oil and Gas
NOV 30 2018
WV Department of
Environmental Protection



Where energy meets innovation.

Actual Wellpath Report

SHR-60 514460 ST01 AWP Proj: 21001'

Page 12 of 15



REFERENCE WELLPATH IDENTIFICATION			
Operator	EQT	Slot	Slot 514460
Area	Tyler County, WV	Well	SHR-60 514460 ST01
Field	Tyler	Wellbore	SHR-60 514460 ST01 AWB
Facility	SHR-60 Pad	Sidetrack from	SHR-60 514460 AWP Proj: 6657' at 4903.00 MD

WELLPATH DATA (341 stations)											
MD [ft]	Inclination [°]	Azimuth [°]	TVD [ft]	TVDSS [ft]	Vert Sect [ft]	North [ft]	East [ft]	DLS ["/100ft]	Build Rate ["/100ft]	Turn Rate ["/100ft]	Comments
18567.00	90.180	159.870	6623.86	5596.86	11900.79	-11016.17	4503.03	14.00	1.68	-13.90	
18598.00	90.580	156.280	6623.65	5596.65	11931.78	-11044.92	4514.60	11.65	1.29	-11.58	
18661.00	90.460	153.420	6623.08	5596.08	11994.71	-11101.94	4541.37	4.54	-0.19	-4.54	
18725.00	90.430	153.820	6622.58	5595.58	12058.57	-11159.27	4569.81	0.63	-0.05	0.63	
18788.00	90.220	153.010	6622.22	5595.22	12121.41	-11215.61	4598.00	1.33	-0.33	-1.29	
18851.00	90.490	153.210	6621.83	5594.83	12184.23	-11271.80	4626.49	0.53	0.43	0.32	
18915.00	90.370	152.350	6621.35	5594.35	12248.01	-11328.71	4655.77	1.36	-0.19	-1.34	
18978.00	90.000	152.520	6621.15	5594.15	12310.77	-11384.55	4684.92	0.65	-0.59	0.27	
19042.00	89.570	153.460	6621.39	5594.39	12374.57	-11441.57	4713.99	1.62	-0.67	1.47	
19105.00	89.570	154.170	6621.86	5594.86	12437.44	-11498.11	4741.78	1.13	0.00	1.13	
19169.00	90.060	153.510	6622.07	5595.07	12501.32	-11555.55	4770.00	1.28	0.77	-1.03	
19232.00	90.150	153.560	6621.95	5594.95	12564.17	-11611.95	4798.08	0.16	0.14	0.08	
19296.00	90.060	153.620	6621.84	5594.84	12628.02	-11669.27	4826.54	0.17	-0.14	0.09	
19359.00	90.090	153.640	6621.75	5594.75	12690.88	-11725.71	4854.53	0.06	0.05	0.03	
19423.00	90.120	154.200	6621.64	5594.64	12754.76	-11783.19	4882.66	0.88	0.05	0.87	
19486.00	89.880	154.930	6621.64	5594.64	12817.68	-11840.09	4909.72	1.22	-0.38	1.16	
19550.00	89.600	155.840	6621.93	5594.93	12881.64	-11898.27	4936.38	1.49	-0.44	1.42	
19613.00	89.570	156.880	6622.38	5595.38	12944.63	-11955.98	4961.64	1.65	-0.05	1.65	
19675.00	89.480	156.620	6622.90	5595.90	13006.62	-12012.94	4986.11	0.44	-0.15	-0.42	
19738.00	89.630	156.610	6623.39	5596.39	13069.61	-12070.77	5011.11	0.24	0.24	-0.02	
19802.00	89.630	156.780	6623.80	5596.80	13133.60	-12129.55	5036.43	0.27	0.00	0.27	
19866.00	89.630	157.500	6624.21	5597.21	13197.60	-12188.52	5061.30	1.12	0.00	1.12	
19929.00	89.720	158.380	6624.57	5597.57	13260.60	-12246.90	5084.96	1.40	0.14	1.40	
19992.00	89.720	159.210	6624.88	5597.88	13323.58	-12305.64	5107.74	1.32	0.00	1.32	
20056.00	89.600	159.760	6625.26	5598.26	13387.54	-12365.58	5130.17	0.88	-0.19	0.86	
20119.00	89.510	159.500	6625.75	5598.75	13450.49	-12424.63	5152.10	0.44	-0.14	-0.41	
20182.00	89.510	159.070	6626.29	5599.29	13513.45	-12483.56	5174.38	0.68	0.00	-0.68	
20246.00	89.720	158.450	6626.72	5599.72	13577.44	-12543.21	5197.57	1.02	0.33	-0.97	
20309.00	89.570	158.170	6627.11	5600.11	13640.43	-12601.75	5220.85	0.50	-0.24	-0.44	
20373.00	89.540	158.000	6627.60	5600.60	13704.42	-12661.12	5244.74	0.27	-0.05	-0.27	

RECEIVED
Office of Oil and Gas
NOV 30 2018
WV Department of
Environmental Protection



Where energy meets innovation.

Actual Wellpath Report

SHR-60 514460 ST01 AWP Proj: 21001'

Page 13 of 15



REFERENCE WELLPATH IDENTIFICATION			
Operator	EQT	Slot	Slot 514460
Area	Tyler County, WV	Well	SHR-60 514460 ST01
Field	Tyler	Wellbore	SHR-60 514460 ST01 AWB
Facility	SHR-60 Pad	Sidetrack from	SHR-60 514460 AWP Proj: 6657' at 4903.00 MD

WELLPATH DATA (341 stations)											
MD	Inclination	Azimuth	TVD	TVDSS	Vert Sect	North	East	DLS	Build	Turn	Comments
[ft]	[°]	[°]	[ft]	[ft]	[ft]	[ft]	[ft]	[°/100ft]	Rate	Rate	
									[°/100ft]	[°/100ft]	
20436.00	89.600	157.970	6628.08	5601.08	13767.42	12719.53	5268.35	0.11	0.10	-0.05	
20500.00	89.630	157.510	6628.51	5601.51	13831.41	12778.76	5292.60	0.72	0.09	-0.72	
20564.00	89.450	157.080	6629.02	5602.02	13895.41	12837.79	5317.30	0.73	-0.28	-0.67	
20627.00	89.600	157.010	6629.54	5602.54	13958.41	12895.80	5341.87	0.26	0.24	-0.11	
20690.00	89.510	156.560	6630.03	5603.03	14021.40	12953.70	5366.70	0.73	-0.14	-0.71	
20754.00	89.510	156.090	6630.58	5603.58	14085.39	13012.31	5392.40	0.73	0.00	-0.73	
20818.00	89.510	156.120	6631.13	5604.13	14149.37	13070.82	5418.32	0.05	0.00	0.05	
20881.00	89.540	155.940	6631.65	5604.65	14212.35	13128.39	5443.92	0.29	0.05	-0.29	
20945.00	89.570	156.200	6632.15	5605.15	14276.32	13186.89	5469.87	0.41	0.05	0.41	
20971.00	89.660	156.600	6632.32	5605.32	14302.32	13210.71	5480.28	1.58	0.35	1.54	Final Survey=20971' MD / 6632.32' TVD
21001.00	89.660	156.600	6632.50	5605.50	14332.32	13238.24	5492.20	0.00	0.00	0.00	Projection to TD=21001' MD / 6632.50' TVD, Deepest Point of Well=21001' MD / 6632.50' TVD

HOLE & CASING SECTIONS - Ref Wellbore: SHR-60 514460 ST01 AWB Ref Wellpath: SHR-60 514460 ST01 AWP Proj: 21001'									
String/Diameter	Start MD	End MD	Interval	Start TVD	End TVD	Start N/S	Start E/W	End N/S	End E/W
	[ft]	[ft]	[ft]	[ft]	[ft]	[ft]	[ft]	[ft]	[ft]
26in Conductor	16.00	63.00	47.00	16.00	63.00	0.00	0.00	-0.08	0.03
17.5in Open Hole	63.00	1000.00	937.00	63.00	999.99	-0.08	0.03	-1.62	0.57
13.375in Casing Surface	16.00	1000.00	984.00	16.00	999.99	0.00	0.00	-1.62	0.57
12.25in Open Hole	1000.00	2781.00	1781.00	999.99	2780.87	-1.62	0.57	11.82	-13.63
9.625in Casing Intermediate	16.00	2781.00	2765.00	16.00	2780.87	0.00	0.00	11.82	-13.63
8.75in Open Hole	2781.00	4903.00	2122.00	2780.87	4902.73	11.82	-13.63	-1.17	-28.92
8.5in Open Hole	4903.00	21001.00	16098.00	4902.73	6632.50	-1.17	-28.92	-13238.24	5492.20
5.5in Casing Production	16.00	21001.00	20985.00	16.00	6632.50	0.00	0.00	-13238.24	5492.20

RECEIVED
Office of Oil and Gas
NOV 30 2018
WV Department of
Environmental Protection



Where energy meets innovation.

Actual Wellpath Report

SHR-60 514460 ST01 AWP Proj: 21001'

Page 14 of 15



REFERENCE WELLPATH IDENTIFICATION			
Operator	EQT	Slot	Slot 514460
Area	Tyler County, WV	Well	SHR-60 514460 ST01
Field	Tyler	Wellbore	SHR-60 514460 ST01 AWB
Facility	SHR-60 Pad	Sidetrack from	SHR-60 514460 AWP Proj: 6657' at 4903.00 MD

TARGETS								
Name	TVD [ft]	North [ft]	East [ft]	Grid East [US ft]	Grid North [US ft]	Latitude	Longitude	Shape
SHR-60 514460 LP Rev-2	6587.96	-342.08	0.31	1629438.93	328240.15	39°23'37.638"N	80°48'40.397"W	point
SHR-60 514460 BHL Rev-2	6605.43	-13231.40	5495.22	1634933.55	315351.52	39°21'31.046"N	80°47'28.054"W	point
SHR-60 HL1 Rev-1	7000.00	0.00	0.00	1629438.62	328582.21	39°23'41.019"N	80°48'40.465"W	polygon
SHR-60 HL2 Rev-1	7000.00	0.00	0.00	1629438.62	328582.21	39°23'41.019"N	80°48'40.465"W	polygon
SHR-60 HL3 Rev-1	7000.00	0.00	0.00	1629438.62	328582.21	39°23'41.019"N	80°48'40.465"W	polygon

WELLPATH COMPOSITION - Ref Wellbore: SHR-60 514460 ST01 AWB				Ref Wellpath: SHR-60 514460 ST01 AWP Proj: 21001'	
Start MD [ft]	End MD [ft]	Positional Uncertainty Model	Log Name/Comment		Wellbore
16.00	4903.00	VESSI GyroFlex v4	01_VES Gyro <8-3/4"> (103'-6603')		SHR-60 514460 AWB
4903.00	20971.00	BHI AutoTrak Curve (Short)	02_BHI AT Curve <8-1/2"> (4903')(4993'-20971')		SHR-60 514460 ST01 AWB
20971.00	21001.00	Blind Drilling (std)	Projection to bit		SHR-60 514460 ST01 AWB

RECEIVED
Office of Oil and Gas
NOV 30 2018
WV Department of
Environmental Protection



Where energy meets innovation.

Actual Wellpath Report

SHR-60 514460 ST01 AWP Proj: 21001'

Page 15 of 15



REFERENCE WELLPATH IDENTIFICATION

Operator	EQT	Slot	Slot 514460
Area	Tyler County, WV	Well	SHR-60 514460 ST01
Field	Tyler	Wellbore	SHR-60 514460 ST01 AWB
Facility	SHR-60 Pad	Sidetrack from	SHR-60 514460 AWP Proj: 6657' at 4903.00 MD

WELLPATH COMMENTS

MD [ft]	Inclination [°]	Azimuth [°]	TVD [ft]	Comment
103.00	0.390	157.800	103.00	VES Gyro <8-3/4"> (103'-6603')
4903.00	0.940	202.640	4902.73	Gyro Tie In=4903' MD
4993.00	0.890	197.450	4992.72	KOP 1=4993' MD
5875.00	18.110	319.230	5840.60	KOP 2=5875' MD
6947.00	89.320	159.100	6595.23	LP=6947' MD / 6595.23' TVD
20971.00	89.660	156.600	6632.32	Final Survey=20971' MD / 6632.32' TVD
21001.00	89.660	156.600	6632.50	Projection to TD=21001' MD / 6632.50' TVD, Deepest Point of Well=21001' MD / 6632.50' TVD

RECEIVED
Office of Oil and Gas
NOV 30 2018
WV Department of
Environmental Protection