

SHR 60
WV 514461
EQT Production Company

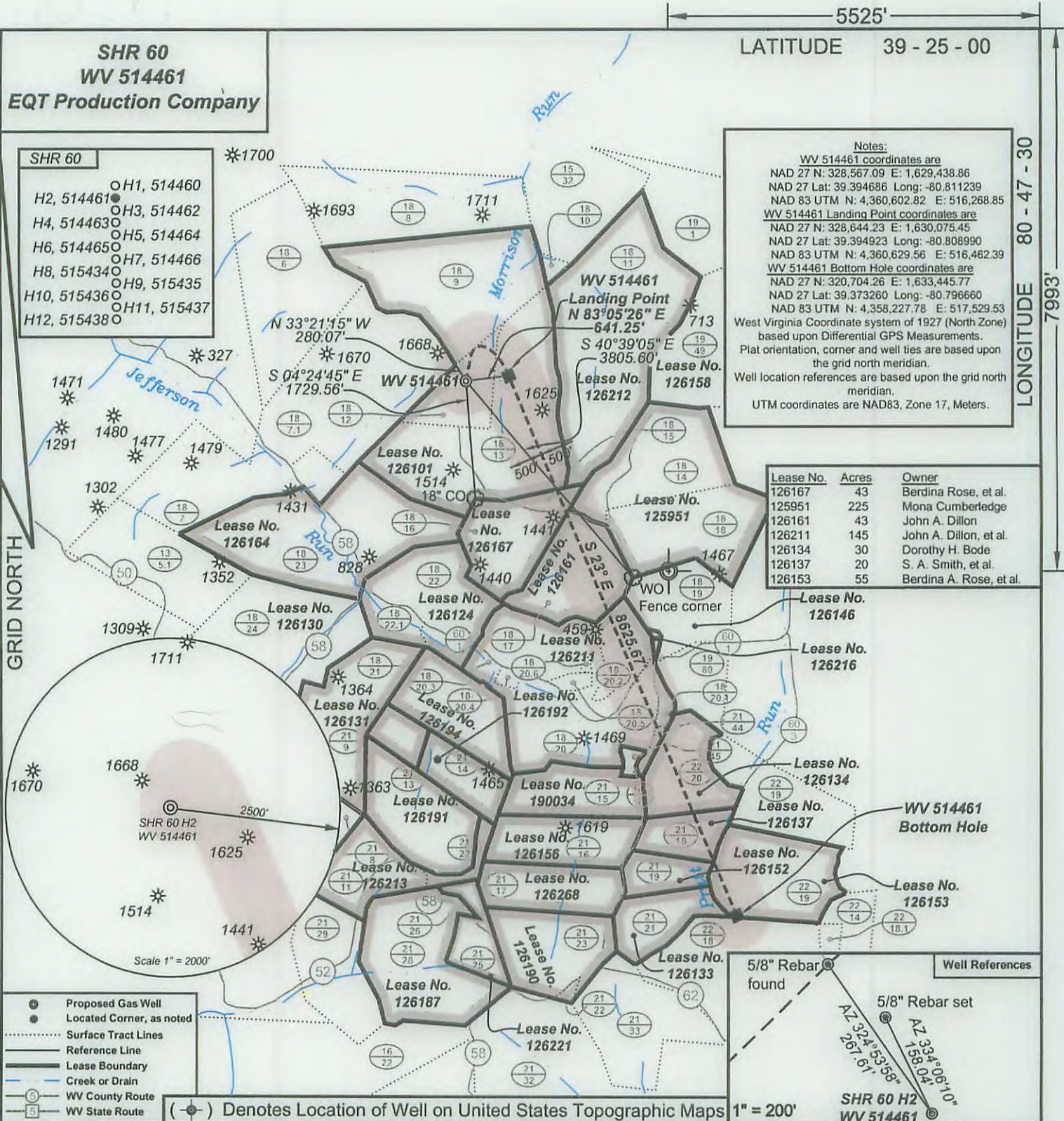
5525'
 LATITUDE 39 - 25 - 00

LONGITUDE 80 - 47 - 30
 7993'

- SHR 60
- H1, 514460
 - H2, 514461
 - H3, 514462
 - H4, 514463
 - H5, 514464
 - H6, 514465
 - H7, 514466
 - H8, 515434
 - H9, 515435
 - H10, 515436
 - H11, 515437
 - H12, 515438

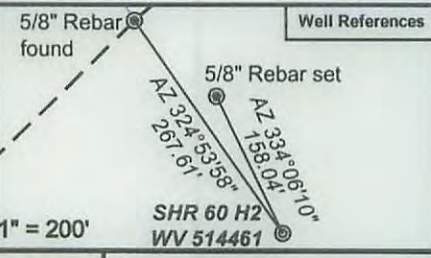
Notes:
 WV 514461 coordinates are
 NAD 27 N: 328,567.09 E: 1,629,438.86
 NAD 83 UTM N: 4,360,602.82 E: 516,268.85
 WV 514461 Landing Point coordinates are
 NAD 27 N: 328,644.23 E: 1,630,075.45
 NAD 27 Lat: 39.394923 Long: -80.808990
 NAD 83 UTM N: 4,360,629.56 E: 516,462.39
 WV 514461 Bottom Hole coordinates are
 NAD 27 N: 320,704.26 E: 1,633,445.77
 NAD 27 Lat: 39.373260 Long: -80.796660
 NAD 83 UTM N: 4,358,227.78 E: 517,529.53
 West Virginia Coordinate system of 1927 (North Zone)
 based upon Differential GPS Measurements.
 Plat orientation, corner and well ties are based upon
 the grid north meridian.
 Well location references are based upon the grid north
 meridian.
 UTM coordinates are NAD83, Zone 17, Meters.

GRID NORTH



Lease No.	Acres	Owner
126167	43	Berdina Rose, et al.
125951	225	Mona Cumberledge
126161	43	John A. Dillon
126211	145	John A. Dillon, et al.
126134	30	Dorothy H. Bode
126137	20	S. A. Smith, et al.
126153	55	Berdina A. Rose, et al.

- Proposed Gas Well
- Located Corner, as noted
- Surface Tract Lines
- Reference Line
- Lease Boundary
- Creek or Drain
- WV County Route
- WV State Route



I, the undersigned, hereby certify that this plat is correct to the best of my knowledge and belief and shows all the information required by law and the regulations issued and prescribed by the Department of Environmental Protection.

Ben R. Singleton
 P.S. 2092



FILE NO: 208-13
 DRAWING NO: 208-13 SHR 60 H2
 SCALE: 1" = 2000'
 MINIMUM DEGREE OF ACCURACY: 1:2500
 PROVEN SOURCE OF ELEVATION: NGS CORS Station

STATE OF WEST VIRGINIA
 DEPARTMENT OF ENVIRONMENTAL PROTECTION
OIL AND GAS DIVISION

DATE: January 5 20 16
 OPERATOR'S WELL NO.: 514461
 API WELL NO
 47 - 95 - 022164 HGA
 STATE COUNTY PERMIT

WELL TYPE: OIL GAS LIQUID INJECTION WASTE DISPOSAL
 (IF GAS) PRODUCTION: STORAGE DEEP SHALLOW
 LOCATION: ELEVATION: Ground 1,018' Proposed 1,011' WATERSHED Morrison Run of McElroy Creek QUADRANGLE: Shirley
 DISTRICT: McElroy COUNTY: Tyler
 SURFACE OWNER: Vivian J. Wells, et al. ACREAGE: 35.38
 ROYALTY OWNER: George Birklein, et al. LEASE NO: 126101 ACREAGE: 240
 PROPOSED WORK: DRILL CONVERT DRILL DEEPER FRACTURE OR STIMULATE PLUG OFF OLD FORMATION
 PERFORATE NEW FORMATION OTHER PHYSICAL CHANGE IN WELL (SPECIFY)
 PLUG AND ABANDON CLEAN OUT AND REPLUG TARGET FORMATION: Marcellus ESTIMATED DEPTH: TVD 6,566'

WELL OPERATOR: EQT Production Company DESIGNATED AGENT: Rex C. Ray
 ADDRESS: 115 Professional Place PO Box 280 ADDRESS: 115 Professional Place PO Box 280
 Bridgeport, WV 26330 Bridgeport, WV 26330