



ANTERO RESOURCES CORPORATION

Location: Tyler County, WV
 Field: Tyler
 Facility: Edna Monroe Pad

Slot: Slot #07
 Well: Leaseburg Unit 2H
 Wellbore: Leaseburg Unit 2H PWB



API: 47-095-02283-0000
 BHI Job #: 8346751
 Rig: Patterson 343
 Duration: 01/25/2017-01/28/2017

Plot reference wellpath is Leaseburg Unit 2H PWP Rev-A.0	Grid System: NAD27 / UTM Zone 17 North, US feet
True vertical depths are referenced to Patterson 343 (RKB)	* = Wellpath was transformed from a different geodetic datum
Measured depths are referenced to Patterson 343 (RKB)	North Reference: Grid north
Patterson 343 (RKB) to Mean Sea Level: 1069 feet	Scale: True distance
Mean Sea Level to Mud line (At Slot: Slot #07): -1044 feet	Depths are in feet
Coordinates are in feet referenced to Slot	Created by: delaset on 2017-02-01
	Database: WA_MPL_EasternUS_Defn

Gyrodata MS Gyro <8-3/4"> (100'-5602') : 0.24" Inc, 112.00ft MD, 112.00ft TVD, -0.08ft VS

Location Information				
Facility Name	Grid East (US ft)	Grid North (US ft)	Latitude	Longitude
Edna Monroe Pad	1676182.158	14315855.438	39°25'21.620"N	80°52'24.070"W
Slot	Local N (ft)	Local E (ft)	Grid East (US ft)	Grid North (US ft)
Slot #07	-19.22	2.38	1676184.540	14315836.230
			39°25'21.430"N	80°52'24.040"W
Comment: Leaseburg Unit 2H				
Patterson 343 (RKB) to Mud line (At Slot: Slot #07)				25ft
Mean Sea Level to Mud line (At Slot: Slot #07)				-1044ft
Patterson 343 (RKB) to Mean Sea Level				1069ft

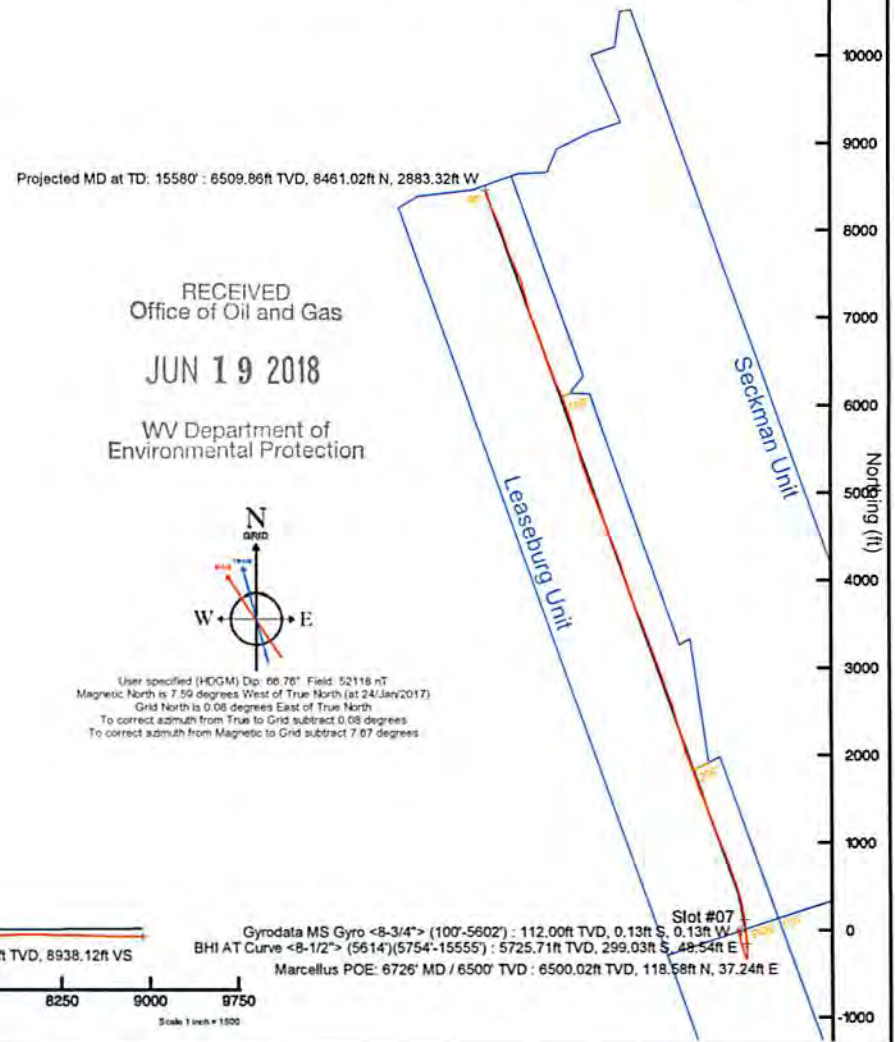
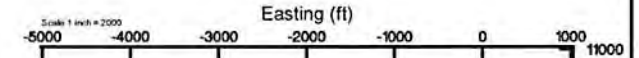
Well Profile Data								
Design Comment	MD (ft)	Inc (")	Az (°)	TVD (ft)	Local N (ft)	Local E (ft)	DLS (°/100ft)	VS (ft)
Tie On	5614.00	10.410	160.860	5588.52	-272.81	39.10	0.00	-270.18
Proj. to Bottom	5754.00	11.590	160.410	5725.95	-298.01	47.96	0.85	-296.89
Curve KOP	5809.15	11.590	160.410	5779.97	-308.44	51.67	0.00	-307.97
End of 3D Arc	6104.89	12.794	8.239	6073.20	-303.96	66.54	8.00	-308.72
Avoid No-Go	6279.15	30.000	0.000	6234.87	-240.81	69.32	10.00	-250.13
POE	6694.85	71.005	350.479	6494.00	70.73	35.31	10.00	54.85
Landing Pt.	6857.31	90.500	350.479	6519.98	228.10	8.91	12.00	212.00
On Azimuth	7190.78	90.500	340.474	6517.06	550.49	-74.60	3.00	543.76
End of Tangent	15570.87	90.500	340.474	6443.95	8448.36	-2875.38	0.00	8923.53

Well Data			
Slot	Well	Wellbore	Wellpath
Slot #07	Leaseburg Unit 2H	Leaseburg Unit 2H AWB	Leaseburg Unit 2H AWP Proj: 15580'
Slot #07	Leaseburg Unit 2H	Leaseburg Unit 2H PWB	Leaseburg Unit 2H PWP Rev-A.0

BHI AT Curve <8-1/2"> (5614')(5754'-15555') : 12.56" Inc, 5754.00ft MD, 5725.71ft TVD, -298.05ft VS

Marcellus POE: 6726' MD / 6500' TVD : 78.47" Inc, 6726.00ft MD, 6500.02ft TVD, 99.31ft VS

Projected MD at TD: 15580' : 89.29" Inc, 15580.00ft MD, 6509.86ft TVD, 8938.12ft VS



Scale 1 inch = 1000

True Vertical Depth (ft)

-750

750

1500

2250

3000

3750

4500

5250

6000

6750

-750 0 750 1500 2250 3000 3750 4500 5250 6000 6750 7500 8250 9000 9750

Vertical Section (ft)

Azimuth 340.47" with reference 0.00 N, 0.00 E

Scale 1 inch = 1000

Gyrodata MS Gyro <8-3/4"> (100'-5602') : 112.00ft TVD, 0.13ft S, 0.13ft W
 BHI AT Curve <8-1/2"> (5614')(5754'-15555') : 5725.71ft TVD, 299.03ft S, 48.54ft E
 Marcellus POE: 6726' MD / 6500' TVD : 6500.02ft TVD, 118.58ft N, 37.24ft E



Actual Wellpath Report

Leaseburg Unit 2H AWP Proj: 15580'
Page 1 of 10



REFERENCE WELLPATH IDENTIFICATION			
Operator	ANTERO RESOURCES CORPORATION	Slot	Slot #07
Area	Tyler County, WV	Well	Leaseburg Unit 2H
Field	Tyler	Wellbore	Leaseburg Unit 2H AWB
Facility	Edna Monroe Pad		

REPORT SETUP INFORMATION			
Projection System	NAD27 / UTM Zone 17 North, US feet	Software System	WellArchitect® 5.0
North Reference	Grid	User	Delaset
Scale	0.999601	Report Generated	01/Feb/2017 at 10:38
Convergence at slot	0.09° East	Database/Source file	WA_MPL_EasternUS_Defn/Leaseburg_Unit_2H_AWP_Proj_15580_.xml

WELLPATH LOCATION						
	Local coordinates		Grid coordinates		Geographic coordinates	
	North[ft]	East[ft]	Easting[US ft]	Northing[US ft]	Latitude	Longitude
Slot Location	-19.22	2.38	1676184.54	14315836.23	39°25'21.430"N	80°52'24.040"W
Facility Reference Pt			1676182.16	14315855.44	39°25'21.620"N	80°52'24.070"W
Field Reference Pt			0.00	0.00	0°00'00.000"	85°29'19.301"W

WELLPATH DATUM			
Calculation method	Minimum curvature	Patterson 343 (RKB) to Facility Vertical Datum	25.00ft
Horizontal Reference Pt	Slot	Patterson 343 (RKB) to Mean Sea Level	1069.00ft
Vertical Reference Pt	Patterson 343 (RKB)	Patterson 343 (RKB) to Mud Line at Slot (Slot #07)	25.00ft
MD Reference Pt	Patterson 343 (RKB)	Section Origin	N 0.00, E 0.00 ft
Field Vertical Reference	Mean Sea Level	Section Azimuth	340.47°

RECEIVED
Office of Oil and Gas

JUN 19 2018

WV Department of
Environmental Protection



Actual Wellpath Report

Leaseburg Unit 2H AWP Proj: 15580



REFERENCE WELLPATH IDENTIFICATION			
Operator	ANTERO RESOURCES CORPORATION	Slot	Slot #07
Area	Tyler County, WV	Well	Leaseburg Unit 2H
Field	Tyler	Wellbore	Leaseburg Unit 2H AWB
Facility	Edna Monroe Pad		

WELLPATH DATA (183 stations) † = interpolated/extrapolated station												
MD	Inclination	Azimuth	TVD	Vert Sect	North	East	Grid East	Grid North	Latitude	Longitude	Closure Dist	Dir
(m)	(°)	(°)	(m)	(m)	(m)	(m)	(US M)	(US M)	(N)	(W)	(m)	(°)
0.00	223.330	0.00	0.00	0.00	0.00	0.00	1676184.54	14315836.23	39°25'21.430"N	80°52'24.040"W	0.00	0.00
25.00	223.330	0.00	25.00	0.00	0.00	0.00	1676184.54	14315836.23	39°25'21.430"N	80°52'24.040"W	0.00	0.00
112.00	223.330	112.00	0.240	-0.08	-0.13	-0.13	1676184.42	14315836.10	39°25'21.429"N	80°52'24.042"W	0.18	223.330
212.00	173.670	212.00	0.310	-0.44	-0.55	-0.24	1676184.30	14315835.68	39°25'21.425"N	80°52'24.043"W	0.60	203.338
312.00	158.200	312.00	0.390	-1.05	-1.14	-0.08	1676184.46	14315835.09	39°25'21.419"N	80°52'24.041"W	1.14	184.154
412.00	154.450	411.99	0.560	-1.87	-1.90	0.25	1676184.79	14315834.34	39°25'21.411"N	80°52'24.037"W	1.91	172.354
512.00	152.370	511.99	0.560	-2.84	-2.77	0.69	1676185.23	14315833.46	39°25'21.403"N	80°52'24.031"W	2.85	165.973
612.00	250.030	611.99	0.370	-3.33	-3.31	0.27	1676185.15	14315832.92	39°25'21.397"N	80°52'24.032"W	3.37	169.482
712.00	282.240	711.97	1.850	-2.48	-3.08	-1.27	1676183.27	14315833.15	39°25'21.400"N	80°52'24.066"W	3.33	202.341
812.00	275.660	811.85	3.540	-0.32	-2.43	-5.92	1676178.63	14315833.80	39°25'21.406"N	80°52'24.115"W	6.40	247.637
912.00	272.870	811.66	3.630	2.20	-1.97	-12.15	1676172.39	14315834.26	39°25'21.411"N	80°52'24.195"W	12.31	260.786
1012.00	251.830	1011.51	2.500	-2.49	-17.38	-17.38	1676167.16	14315833.74	39°25'21.406"N	80°52'24.262"W	17.56	261.840
1112.00	227.030	1111.44	1.900	-4.30	-20.67	-20.67	1676163.88	14315831.93	39°25'21.388"N	80°52'24.303"W	21.11	258.241
1212.00	229.650	1211.41	0.930	-5.96	-22.50	-22.50	1676162.05	14315830.27	39°25'21.371"N	80°52'24.327"W	23.28	255.169
1312.00	233.460	1311.40	0.830	-6.91	-23.70	-23.70	1676160.85	14315829.32	39°25'21.362"N	80°52'24.342"W	24.69	253.736
1412.00	258.140	1411.39	1.030	-7.53	-25.16	-25.16	1676159.39	14315828.70	39°25'21.356"N	80°52'24.361"W	26.27	253.339
1512.00	276.640	1511.37	1.300	-7.58	-27.17	-27.17	1676157.38	14315828.65	39°25'21.355"N	80°52'24.366"W	28.21	254.403
1612.00	279.310	1611.35	0.990	-7.31	-29.15	-29.15	1676156.40	14315828.92	39°25'21.358"N	80°52'24.412"W	30.05	255.915
1712.00	32.980	1711.34	0.690	-6.67	-29.67	-29.67	1676154.88	14315829.56	39°25'21.365"N	80°52'24.418"W	30.41	257.334
1812.00	34.810	1811.32	1.470	-5.11	-28.61	-28.61	1676155.94	14315831.12	39°25'21.380"N	80°52'24.405"W	29.07	259.874
1912.00	23.910	1911.29	1.590	-6.50	-27.32	-27.32	1676157.23	14315833.44	39°25'21.403"N	80°52'24.388"W	27.46	264.171
2012.00	337.180	2111.20	1.140	9.20	-27.04	0.17	1676157.51	14315836.40	39°25'21.432"N	80°52'24.385"W	27.04	270.350
2112.00	320.450	2211.19	0.870	13.58	-28.59	4.27	1676155.96	14315840.50	39°25'21.473"N	80°52'24.404"W	28.90	278.496
2212.00	323.510	2311.17	1.130	15.24	-29.66	5.65	1676154.90	14315841.88	39°25'21.486"N	80°52'24.418"W	30.19	280.784
2312.00	325.790	2411.14	1.840	17.73	-31.15	-31.15	1676153.41	14315844.00	39°25'21.507"N	80°52'24.437"W	32.10	284.006
2412.00	317.640	2511.07	2.390	10.64	-33.45	-33.45	1676151.10	14315846.86	39°25'21.536"N	80°52'24.466"W	35.10	287.639
2512.00	306.240	2610.96	2.870	25.20	-36.88	-36.88	1676147.68	14315849.88	39°25'21.566"N	80°52'24.510"W	39.33	290.323
2612.00	303.020	2710.83	3.170	29.47	-41.21	-41.21	1676143.34	14315852.87	39°25'21.595"N	80°52'24.565"W	44.45	291.992
2812.00	235.280	2810.76	1.110	17.60	-44.33	-44.33	1676140.23	14315853.82	39°25'21.605"N	80°52'24.605"W	47.70	291.654

RECEIVED
Office of Oil and Gas

JUN 19 2018

WV Department of
Environmental Protection



Actual Wellpath Report

Leaseburg Unit 2H AWP Proj: 15580'
Page 3 of 10



REFERENCE WELLPATH IDENTIFICATION			
Operator	ANTERO RESOURCES CORPORATION	Slot	Slot #07
Area	Tyler County, WV	Well	Leaseburg Unit 2H
Field	Tyler	Wellbore	Leaseburg Unit 2H AWB
Facility	Edna Monroe Pad		

WELLPATH DATA (183 stations)																
MD	Inclination	Azimuth	TVD	Vert Sect	North	East	Grid East	Grid North	Latitude	Longitude	Closure Dist	Closure Dir	DLS	Build Rate	Turn Rate	Comments
[ft]	[°]	[°]	[ft]	[ft]	[ft]	[ft]	[US ft]	[US ft]			[ft]	[°]	[°/100ft]	[°/100ft]	[°/100ft]	
2912.00	2.290	163.270	2910.73	29.16	15.13	-44.55	1676140.01	14315851.36	39°25'21.580"N	80°52'24.607"W	47.05	288.763	2.21	1.18	-72.01	
3012.00	2.440	161.710	3010.64	25.03	11.20	-43.31	1676141.25	14315847.43	39°25'21.541"N	80°52'24.592"W	44.73	284.500	0.16	0.15	-1.56	
3112.00	1.370	141.950	3110.58	21.77	8.24	-41.90	1676142.65	14315844.46	39°25'21.512"N	80°52'24.574"W	42.70	281.122	1.24	-1.07	-19.76	
3212.00	1.180	134.700	3210.56	19.71	6.57	-40.43	1676144.12	14315842.80	39°25'21.496"N	80°52'24.555"W	40.96	279.232	0.25	-0.19	-7.25	
3312.00	0.980	124.080	3310.54	18.10	5.37	-38.99	1676145.56	14315841.60	39°25'21.484"N	80°52'24.537"W	39.36	277.839	0.28	-0.20	-10.62	
3412.00	0.710	112.500	3410.53	16.99	4.65	-37.71	1676146.84	14315840.88	39°25'21.477"N	80°52'24.520"W	38.00	277.032	0.32	-0.27	-11.58	
3512.00	0.530	102.930	3510.52	16.33	4.31	-36.69	1676147.86	14315840.54	39°25'21.473"N	80°52'24.507"W	36.94	276.702	0.21	-0.18	-9.57	
3612.00	0.510	103.530	3610.52	15.84	4.10	-35.81	1676148.75	14315840.33	39°25'21.471"N	80°52'24.496"W	36.04	276.539	0.02	-0.02	0.60	
3712.00	0.830	145.620	3710.51	14.90	3.40	-34.96	1676149.59	14315839.63	39°25'21.464"N	80°52'24.485"W	35.13	275.558	0.57	0.32	42.09	
3812.00	1.670	159.940	3810.49	12.74	1.44	-34.06	1676150.50	14315837.67	39°25'21.445"N	80°52'24.474"W	34.09	272.414	0.89	0.84	14.32	
3912.00	4.090	158.560	3910.36	7.72	-3.25	-32.25	1676152.30	14315832.98	39°25'21.398"N	80°52'24.451"W	32.42	264.240	2.42	2.42	-1.38	
4012.00	6.010	161.620	4009.96	-1.08	-11.54	-29.30	1676155.25	14315824.69	39°25'21.316"N	80°52'24.414"W	31.49	248.499	1.94	1.92	3.06	
4112.00	8.010	163.170	4109.21	-13.28	-23.18	-25.63	1676158.92	14315813.06	39°25'21.201"N	80°52'24.367"W	34.56	227.874	2.01	2.00	1.55	
4212.00	8.880	164.610	4208.13	-27.94	-37.29	-21.56	1676162.98	14315798.95	39°25'21.062"N	80°52'24.315"W	43.08	210.040	0.90	0.87	1.44	
4312.00	8.910	167.340	4306.92	-43.32	-52.29	-17.82	1676166.73	14315783.96	39°25'20.914"N	80°52'24.268"W	55.24	198.818	0.42	0.03	2.73	
4412.00	8.920	168.220	4405.72	-58.69	-67.43	-14.54	1676170.01	14315768.82	39°25'20.764"N	80°52'24.226"W	68.98	192.167	0.14	0.01	0.88	
4512.00	10.350	172.060	4504.30	-75.18	-83.92	-11.71	1676172.83	14315752.34	39°25'20.601"N	80°52'24.191"W	84.73	187.947	1.57	1.43	3.84	
4612.00	11.590	170.550	4602.47	-93.87	-102.73	-8.82	1676175.72	14315733.54	39°25'20.415"N	80°52'24.154"W	103.11	184.910	1.27	1.24	-1.51	
4712.00	11.390	166.120	4700.47	-113.58	-122.22	-4.81	1676179.74	14315714.06	39°25'20.222"N	80°52'24.103"W	122.32	182.252	0.90	-0.20	-4.43	
4812.00	10.960	160.560	4798.58	-132.92	-140.77	0.73	1676185.27	14315695.51	39°25'20.039"N	80°52'24.033"W	140.78	179.704	1.16	-0.43	-5.56	
4912.00	10.420	158.530	4896.84	-151.46	-158.15	7.20	1676191.74	14315678.14	39°25'19.867"N	80°52'23.951"W	158.32	177.393	0.66	-0.54	-2.03	
5012.00	10.560	160.340	4995.17	-169.66	-175.20	13.59	1676198.13	14315661.10	39°25'19.698"N	80°52'23.870"W	175.72	175.563	0.36	0.14	1.81	
5112.00	10.510	159.990	5093.49	-187.95	-192.40	19.80	1676204.33	14315643.91	39°25'19.528"N	80°52'23.791"W	193.41	174.125	0.08	-0.05	-0.35	
5212.00	10.350	166.290	5191.84	-206.00	-209.69	25.05	1676209.58	14315626.62	39°25'19.357"N	80°52'23.725"W	211.19	173.189	1.15	-0.16	6.30	
5312.00	10.450	172.930	5290.20	-223.80	-227.42	28.29	1676212.82	14315608.90	39°25'19.182"N	80°52'23.684"W	229.18	172.909	1.20	0.10	6.64	
5412.00	8.520	170.730	5388.83	-239.94	-243.73	30.60	1676215.13	14315592.59	39°25'19.021"N	80°52'23.654"W	245.65	172.844	1.96	-1.93	-2.20	
5512.00	7.810	161.890	5487.82	-254.02	-257.50	33.91	1676218.43	14315578.83	39°25'18.885"N	80°52'23.613"W	259.73	172.499	1.44	-0.71	-8.84	
5612.00	10.370	160.820	5586.55	-269.82	-272.47	38.98	1676223.50	14315563.87	39°25'18.737"N	80°52'23.548"W	275.24	171.859	2.57	2.56	-1.07	
5614.00	10.410	160.860	5588.52	-270.18	-272.81	39.10	1676223.62	14315563.53	39°25'18.733"N	80°52'23.547"W	275.59	171.844	2.03	2.00	2.00	
5754.00	12.560	159.650	5725.71	-298.05	-299.03	48.54	1676233.06	14315537.32	39°25'18.474"N	80°52'23.427"W	302.94	170.780	1.55	1.54	-0.86	BHI AT Curve <8-1/2"> (5614')(5754'-15555')

RECEIVED
Office of Oil and Gas
JUN 19 2018
WV Department of
Environmental Protection



Actual Wellpath Report

Leaseburg Unit 2H AWP Proj: 15580'
Page 4 of 10



REFERENCE WELLPATH IDENTIFICATION			
Operator	ANTERO RESOURCES CORPORATION	Slot	Slot #07
Area	Tyler County, WV	Well	Leaseburg Unit 2H
Field	Tyler	Wellbore	Leaseburg Unit 2H AWB
Facility	Edna Monroe Pad		

WELLPATH DATA (183 stations) † = interpolated/extrapolated station																
MD	Inclination	Azimuth	TVD	Vert Sect	North	East	Grid East	Grid North	Latitude	Longitude	Closure Dist	Closure Dir	DLS	Build Rate	Turn Rate	Comments
(ft)	(°)	(°)	(ft)	(ft)	(ft)	(ft)	(US ft)	(US ft)			(ft)	(°)	(ft/100ft)	(ft/100ft)	(ft/100ft)	
5763.00	12.660	160.500	5734.49	-300.02	-300.88	49.21	1676233.73	14315535.47	39°25'18.456"N	80°52'23.418"W	304.87	170.712	2.34	1.11	9.44	
5810.00	8.120	144.950	5780.72	-308.37	-308.46	52.84	1676237.35	14315527.90	39°25'18.381"N	80°52'23.372"W	312.95	170.280	11.27	-9.66	-33.09	
5859.00	4.490	127.970	5829.42	-313.33	-312.47	56.34	1676240.85	14315523.89	39°25'18.341"N	80°52'23.328"W	317.51	169.780	8.25	-7.41	-34.65	
5906.00	3.430	59.630	5876.33	-314.61	-312.89	59.00	1676243.52	14315523.46	39°25'18.337"N	80°52'23.294"W	318.41	169.321	9.64	-2.26	-145.40	
5953.00	7.030	34.350	5923.13	-312.65	-309.80	61.84	1676246.35	14315526.55	39°25'18.367"N	80°52'23.258"W	315.92	168.712	8.92	7.68	-53.79	
6000.00	8.550	20.410	5969.70	-308.28	-304.15	64.68	1676249.19	14315532.20	39°25'18.423"N	80°52'23.221"W	310.96	167.995	5.14	3.23	-29.66	
6047.00	9.350	12.480	6016.13	-302.36	-297.15	66.72	1676251.24	14315539.20	39°25'18.492"N	80°52'23.195"W	304.55	167.345	3.12	1.70	-16.87	
6094.00	12.640	11.040	6062.26	-294.69	-288.37	68.53	1676253.05	14315547.97	39°25'18.579"N	80°52'23.172"W	296.41	166.631	7.02	7.00	-3.06	
6142.00	16.510	10.550	6108.71	-284.27	-276.51	70.79	1676255.30	14315559.83	39°25'18.696"N	80°52'23.143"W	285.43	165.640	8.07	8.06	-1.02	
6189.00	20.960	6.950	6153.21	-270.96	-261.59	73.03	1676257.54	14315574.74	39°25'18.844"N	80°52'23.114"W	271.60	164.402	9.78	9.47	-7.66	
6236.00	25.830	2.690	6196.33	-253.94	-243.01	74.53	1676259.04	14315593.32	39°25'19.027"N	80°52'23.095"W	254.18	162.950	10.96	10.36	-9.06	
6283.00	29.820	356.290	6237.90	-233.21	-221.10	74.25	1676258.76	14315615.21	39°25'19.244"N	80°52'23.098"W	233.24	161.437	10.59	8.49	-13.62	
6331.00	34.400	351.040	6278.55	-208.38	-195.78	71.37	1676255.88	14315640.53	39°25'19.494"N	80°52'23.134"W	208.38	159.972	11.17	9.54	-10.94	
6378.00	38.970	350.750	6316.23	-180.77	-168.07	66.92	1676251.43	14315668.23	39°25'19.768"N	80°52'23.190"W	180.90	158.288	9.73	9.72	-0.62	
6404.00†	41.660	351.915	6336.06	-164.25	-151.44	64.39	1676248.91	14315684.85	39°25'19.932"N	80°52'23.222"W	164.56	156.965	10.74	10.35	4.48	Middlesex: 6404' MD / 6636' TVD
6425.00	43.840	352.770	6351.48	-150.30	-137.31	62.49	1676247.01	14315698.97	39°25'20.072"N	80°52'23.246"W	150.86	155.528	10.74	10.38	4.07	
6472.00	48.920	355.270	6383.89	-117.25	-103.48	58.98	1676243.50	14315732.79	39°25'20.406"N	80°52'23.290"W	119.11	150.319	11.47	10.81	5.32	
6519.00	53.940	355.970	6413.19	-81.79	-66.86	56.18	1676240.70	14315769.40	39°25'20.768"N	80°52'23.325"W	87.33	139.957	10.74	10.68	1.49	
6562.00†	58.725	355.446	6437.02	-47.27	-31.18	53.50	1676238.02	14315805.06	39°25'21.121"N	80°52'23.359"W	61.93	120.233	11.17	11.13	-1.22	Burket: 6562' MD / 6437' TVD
6566.00	59.170	355.400	6439.08	-43.96	-27.76	53.23	1676237.75	14315808.48	39°25'21.155"N	80°52'23.362"W	60.03	117.547	11.17	11.13	-1.15	
6614.00	63.810	354.960	6461.99	-3.18	14.25	49.68	1676234.20	14315850.48	39°25'21.570"N	80°52'23.407"W	51.69	73.992	9.70	9.67	-0.92	
6630.00†	65.542	354.590	6468.83	10.84	28.66	48.36	1676232.89	14315864.87	39°25'21.713"N	80°52'23.423"W	56.22	59.354	11.02	10.82	-2.31	Tully: 6630' MD / 6469' TVD
6661.00	68.900	353.900	6480.83	38.59	57.09	45.50	1676230.02	14315893.30	39°25'21.994"N	80°52'23.459"W	73.00	38.553	11.02	10.83	-2.22	
6708.00	74.640	351.630	6495.53	82.19	101.35	39.86	1676224.39	14315937.54	39°25'22.431"N	80°52'23.530"W	108.91	21.471	13.05	12.21	-4.83	
6726.00†	76.470	351.041	6500.02	99.31	118.58	37.24	1676221.76	14315954.76	39°25'22.602"N	80°52'23.563"W	124.29	17.433	10.65	10.16	-3.27	Marcellus POE: 6726' MD / 6500' TVD
6755.00	79.420	350.110	6506.08	127.23	146.56	32.59	1676217.12	14315982.73	39°25'22.878"N	80°52'23.622"W	150.14	12.538	10.65	10.17	-3.21	
6802.00	82.070	350.310	6513.63	172.94	192.26	24.71	1676209.24	14316028.42	39°25'23.330"N	80°52'23.722"W	193.85	7.322	5.65	5.64	0.43	
6849.00	82.160	350.030	6520.08	218.83	238.14	16.76	1676201.29	14316074.27	39°25'23.783"N	80°52'23.822"W	238.73	4.025	0.62	0.19	-0.60	
6896.00	87.200	349.270	6524.44	265.02	284.16	8.35	1676192.89	14316120.27	39°25'24.238"N	80°52'23.928"W	284.28	1.683	10.84	10.72	-1.62	
6930.00	90.520	348.340	6525.11	298.65	317.50	1.75	1676186.29	14316153.60	39°25'24.568"N	80°52'24.012"W	317.50	0.316	10.14	9.76	-2.74	

RECEIVED
Office of Oil and Gas

JUN 19 2018

WV Department of
Environmental Protection



Actual Wellpath Report

Leaseburg Unit 2H AWP Proj: 15580'
Page 5 of 10



REFERENCE WELLPATH IDENTIFICATION			
Operator	ANTERO RESOURCES CORPORATION	Slot	Slot #07
Area	Tyler County, WV	Well	Leaseburg Unit 2H
Field	Tyler	Wellbore	Leaseburg Unit 2H AWB
Facility	Edna Monroe Pad		

WELLPATH DATA (183 stations)																
MD [ft]	Inclination [°]	Azimuth [°]	TVD [ft]	Vert Sect [ft]	North [ft]	East [ft]	Grid East [US ft]	Grid North [US ft]	Latitude	Longitude	Closure Dist [ft]	Closure Dir [°]	DLS [°/100ft]	Build Rate [°/100ft]	Turn Rate [°/100ft]	Comments
6991.00	90.520	345.860	6524.56	359.23	376.95	-11.86	1676172.68	14316213.03	39°25'25.156"N	80°52'24.184"W	377.14	358.197	4.07	0.00	-4.07	
7085.00	90.490	343.110	6523.73	452.99	467.51	-37.01	1676147.55	14316303.56	39°25'26.051"N	80°52'24.503"W	468.98	355.474	2.93	-0.03	-2.93	
7179.00	90.490	340.850	6522.93	546.95	556.89	-66.08	1676118.49	14316392.90	39°25'26.935"N	80°52'24.872"W	560.80	353.233	2.40	0.00	-2.40	
7273.00	90.460	339.560	6522.15	640.94	645.34	-97.91	1676086.67	14316481.31	39°25'27.810"N	80°52'25.276"W	652.72	351.373	1.37	-0.03	-1.37	
7368.00	90.890	340.130	6521.03	735.93	734.51	-130.64	1676053.95	14316570.45	39°25'28.691"N	80°52'25.692"W	746.04	349.915	0.75	0.45	0.60	
7462.00	90.770	339.860	6519.67	829.91	822.83	-162.80	1676021.81	14316658.73	39°25'29.565"N	80°52'26.100"W	838.78	348.809	0.31	-0.13	-0.29	
7556.00	90.890	339.520	6518.31	923.89	910.98	-195.42	1675989.20	14316746.84	39°25'30.436"N	80°52'26.514"W	931.70	347.892	0.38	0.13	-0.36	
7651.00	90.710	338.340	6516.98	1018.85	999.61	-229.57	1675955.06	14316835.44	39°25'31.313"N	80°52'26.948"W	1025.64	347.066	1.26	-0.19	-1.24	
7745.00	90.710	339.860	6515.81	1112.81	1087.42	-263.10	1675921.54	14316923.21	39°25'32.181"N	80°52'27.373"W	1118.80	346.399	1.62	0.00	1.62	
7839.00	90.680	339.970	6514.67	1206.80	1175.70	-295.38	1675889.28	14317011.46	39°25'33.054"N	80°52'27.783"W	1212.23	345.897	0.12	-0.03	0.12	
7933.00	90.740	339.330	6513.51	1300.78	1263.82	-328.07	1675856.61	14317099.55	39°25'33.926"N	80°52'28.198"W	1305.71	345.448	0.68	0.06	-0.68	
8027.00	90.800	339.530	6512.25	1394.76	1351.82	-361.09	1675823.60	14317187.51	39°25'34.796"N	80°52'28.617"W	1399.22	345.045	0.22	0.06	0.21	
8122.00	90.650	338.880	6511.04	1489.73	1440.63	-394.81	1675789.88	14317276.28	39°25'35.674"N	80°52'29.045"W	1493.75	344.674	0.70	-0.16	-0.68	
8216.00	90.740	339.460	6509.90	1583.70	1528.47	-428.24	1675756.47	14317364.09	39°25'36.543"N	80°52'29.470"W	1587.33	344.349	0.62	0.10	0.62	
8310.00	90.740	338.840	6508.69	1677.66	1616.31	-461.69	1675723.03	14317451.89	39°25'37.411"N	80°52'29.895"W	1680.96	344.058	0.66	0.00	-0.66	
8405.00	90.800	339.070	6507.41	1772.62	1704.97	-495.80	1675688.94	14317540.51	39°25'38.288"N	80°52'30.328"W	1775.59	343.786	0.25	0.06	0.24	
8499.00	90.770	341.350	6506.13	1866.61	1793.40	-527.62	1675657.13	14317628.91	39°25'39.162"N	80°52'30.732"W	1869.40	343.606	2.43	-0.03	2.43	
8593.00	90.830	341.120	6504.81	1960.59	1882.40	-557.86	1675626.90	14317717.87	39°25'40.042"N	80°52'31.115"W	1963.32	343.492	0.25	0.06	-0.24	
8687.00	90.950	337.350	6503.35	2054.54	1970.26	-591.18	1675593.60	14317805.70	39°25'40.911"N	80°52'31.538"W	2057.04	343.298	4.01	0.13	-4.01	
8781.00	90.490	341.850	6502.17	2148.50	2058.34	-623.93	1675560.86	14317893.74	39°25'41.782"N	80°52'31.954"W	2150.82	343.137	4.81	-0.49	4.79	
8875.00	90.680	345.550	6501.21	2242.32	2148.54	-650.31	1675534.49	14317983.91	39°25'42.674"N	80°52'32.289"W	2244.80	343.160	3.94	0.20	3.94	
8969.00	90.250	344.080	6500.45	2336.05	2239.25	-674.93	1675509.88	14318074.58	39°25'43.571"N	80°52'32.601"W	2338.76	343.227	1.63	-0.46	-1.56	
9063.00	90.310	342.840	6499.99	2429.92	2329.36	-701.69	1675483.13	14318164.66	39°25'44.462"N	80°52'32.940"W	2432.75	343.236	1.32	0.06	-1.32	
9158.00	90.250	343.210	6499.52	2524.82	2420.22	-729.42	1675455.41	14318255.48	39°25'45.360"N	80°52'33.292"W	2527.75	343.228	0.39	-0.06	0.39	
9252.00	90.310	344.180	6499.06	2618.67	2510.44	-755.81	1675429.03	14318345.66	39°25'46.252"N	80°52'33.627"W	2621.74	343.245	1.03	0.06	1.03	
9346.00	90.340	343.220	6498.53	2712.52	2600.66	-782.19	1675402.66	14318435.84	39°25'47.144"N	80°52'33.962"W	2715.74	343.260	1.02	0.03	-1.02	
9441.00	90.520	340.130	6497.82	2807.48	2690.82	-812.06	1675372.81	14318525.98	39°25'48.036"N	80°52'34.341"W	2810.69	343.207	3.26	0.19	-3.25	
9535.00	90.310	339.130	6497.14	2901.47	2778.94	-844.78	1675340.10	14318614.06	39°25'48.907"N	80°52'34.756"W	2904.51	343.091	1.09	-0.22	-1.06	
9629.00	90.280	340.860	6496.65	2995.46	2867.27	-876.93	1675307.96	14318702.35	39°25'49.781"N	80°52'35.164"W	2998.37	342.994	1.84	-0.03	1.84	
9724.00	90.280	340.150	6496.19	3090.46	2956.82	-908.64	1675276.27	14318791.86	39°25'50.668"N	80°52'35.567"W	3093.28	342.918	0.75	0.00	-0.75	

RECEIVED
Office of Oil and Gas

JUN 19 2018

WV Department of
Environmental Protection



Actual Wellpath Report

Leaseburg Unit 2H AWP Proj: 15580



REFERENCE WELLPATH IDENTIFICATION

Operator	ANTERO RESOURCES CORPORATION
Area	Tyler County, WV
Field	Tyler
Facility	Edna Monroe Pad
Slot	Slot #07
Well	Leaseburg Unit 2H
Wellbore	Leaseburg Unit 2H AWB

WELLPATH DATA (183 stations)		MD	Inclination	Azimuth	TVD	Vert Sect	North	East	Grid East	Grid North	Latitude	Longitude	Closure Dist	Closure Dir	DLS	Built Rate	Turn Rate	Comments
		ft	ft	ft	ft	ft	ft	ft	ft	ft	ft	ft	ft	ft	ft	ft/100ft	ft/100ft	
12550.00	89.820	345.910	6498.50	5914.01	5614.89	-1861.07	1674324.21	14321448.87	39°26'16.950"N	80°52'47.660"W	5915.29	341.662	0.63	0.27	-0.57			
12457.00	89.570	346.440	6498.00	5821.47	5524.59	-1838.85	1674346.43	14321358.61	39°26'16.057"N	80°52'47.378"W	5822.58	341.590	1.06	-0.13	1.05			
12263.00	89.690	345.450	6497.40	5727.90	5433.41	-1816.02	1674369.25	14321267.46	39°26'15.156"N	80°52'47.089"W	5728.86	341.519	2.38	-0.06	2.38			
12269.00	89.750	343.210	6496.94	5634.12	5342.91	-1790.63	1674394.62	14321177.00	39°26'14.261"N	80°52'46.767"W	5634.98	341.472	2.57	0.06	2.57			
12174.00	89.690	340.770	6496.47	5539.16	5252.57	-1761.26	1674423.98	14321086.70	39°26'13.368"N	80°52'46.394"W	5539.99	341.463	1.94	0.03	1.94			
12080.00	89.660	338.950	6495.94	5445.17	5164.32	-1728.90	1674456.33	14320998.48	39°26'12.495"N	80°52'45.983"W	5446.04	341.491	0.94	0.13	0.94			
11986.00	89.540	338.070	6495.28	5351.23	5076.86	-1694.47	1674490.75	14320911.06	39°26'11.630"N	80°52'45.645"W	5352.17	341.543	1.04	-0.13	-1.03			
11892.00	89.660	339.040	6494.63	5257.29	4989.37	-1660.10	16744525.10	14320823.60	39°26'10.765"N	80°52'45.109"W	5258.30	341.596	0.42	-0.39	-0.15			
11797.00	90.030	339.180	6494.37	5162.31	4900.62	-1626.23	1674558.97	14320734.88	39°26'09.887"N	80°52'44.679"W	5163.39	341.642	0.22	-0.03	0.21			
11703.00	90.060	338.980	6494.45	5068.34	4812.81	-1592.66	1674592.52	14320647.11	39°26'09.019"N	80°52'44.252"W	5069.49	341.690	0.04	-0.03	-0.02			
11609.00	90.090	339.000	6494.57	4974.37	4725.06	-1558.96	1674626.20	14320559.40	39°26'08.161"N	80°52'43.824"W	4975.60	341.741	0.26	0.25	-0.06			
11514.00	89.850	339.060	6494.52	4879.40	4636.35	-1524.96	1674660.19	14320470.73	39°26'07.274"N	80°52'43.393"W	4880.71	341.793	0.21	-0.10	0.18			
11421.00	89.940	338.890	6494.35	4786.44	4549.55	-1491.60	1674693.54	14320383.95	39°26'06.416"N	80°52'42.969"W	4787.82	341.848	0.93	-0.03	0.93			
11326.00	89.970	338.010	6494.27	4691.50	4461.19	-1456.70	1674728.42	14320295.63	39°26'05.542"N	80°52'42.526"W	4692.99	341.917	0.26	-0.19	-0.18			
11232.00	90.150	338.180	6494.37	4597.58	4373.97	-1421.63	1674763.48	14320208.45	39°26'04.679"N	80°52'42.080"W	4599.21	341.995	1.18	0.09	-1.18			
11137.00	90.060	339.300	6494.55	4502.62	4285.44	-1387.19	1674797.91	14320119.95	39°26'03.804"N	80°52'41.643"W	4504.36	342.063	2.66	-0.03	-2.66			
11043.00	90.090	341.800	6494.67	4408.63	4196.81	-1355.89	1674829.19	14320031.36	39°26'02.928"N	80°52'41.245"W	4410.40	342.096	1.79	0.06	-1.79			
10949.00	90.030	342.480	6494.77	4314.70	4107.10	-1327.84	1674857.23	14319941.68	39°26'02.041"N	80°52'40.889"W	4316.41	342.084	0.62	0.06	0.62			
10855.00	89.970	342.900	6494.77	4220.81	4017.11	-1300.66	1674884.40	14319851.74	39°26'01.151"N	80°52'40.544"W	4222.43	342.059	0.02	0.00	0.02			
10761.00	89.970	342.880	6494.72	4126.89	3927.27	-1273.00	1674912.05	14319761.93	39°26'00.263"N	80°52'40.194"W	4128.44	342.040	1.21	-0.10	1.20			
10667.00	90.060	341.750	6494.74	4032.94	3837.72	-1244.45	1674940.69	14319672.41	39°25'59.377"N	80°52'39.831"W	4034.44	342.034	3.37	0.13	3.37			
10573.00	89.940	338.580	6494.74	3938.95	3749.31	-1212.56	1674972.47	14319584.03	39°25'58.503"N	80°52'39.426"W	3940.51	342.078	2.98	0.39	2.98			
10478.00	89.570	335.770	6494.34	3844.12	3661.76	-1175.71	1675009.30	14319496.52	39°25'57.637"N	80°52'38.958"W	3845.87	342.199	1.75	-0.43	-1.70			
10384.00	89.970	337.370	6493.96	3750.34	3575.51	-1138.33	1675046.66	14319410.31	39°25'56.784"N	80°52'38.483"W	3752.34	342.340	1.77	-0.19	-1.76			
10290.00	90.150	339.020	6494.06	3656.42	3488.24	-1103.42	1675081.56	14319323.07	39°25'55.921"N	80°52'38.040"W	3658.60	342.447	1.41	0.00	-1.41			
10195.00	90.150	340.360	6494.31	3561.43	3399.15	-1070.44	1675114.53	14319234.02	39°25'55.040"N	80°52'37.621"W	3563.71	342.520	0.60	-0.07	0.60			
10101.00	90.220	339.800	6494.61	3467.43	3310.77	-1038.42	1675146.54	14319145.68	39°25'54.166"N	80°52'37.215"W	3469.80	342.586	0.12	-0.06	-0.10			
10007.00	90.280	339.890	6495.02	3373.44	3222.53	-1006.03	1675178.91	14319057.47	39°25'53.294"N	80°52'36.803"W	3375.91	342.662	0.04	0.03	-0.02			
9912.00	90.250	339.910	6495.46	3278.45	3133.32	-973.38	1675211.55	14318968.29	39°25'52.411"N	80°52'36.389"W	3281.03	342.742	0.26	0.07	0.24			
9818.00	90.180	339.680	6495.81	3184.45	3045.10	-940.92	1675244.00	14318880.11	39°25'51.539"N	80°52'35.977"W	3187.16	342.829	0.51	-0.11	-0.50			

RECEIVED
Office of Oil and Gas
JUN 19 2018
WV Department of
Environmental Protection



Actual Wellpath Report

Page 7 of 10

Leaseburg Unit 2H AWP Proj: 15580



Operator	Area	Field	Facility
ANTERO RESOURCES CORPORATION	Tyler County, WV	Tyler	Edna Monroe Pad
Slot	Well	Wellbore	
Slot #07	Leaseburg Unit 2H	Leaseburg Unit 2H AWB	

WELLPATH DATA (183 stations)

MD	Inclination	Azimuth	TVD	Vert Sect	North	East	Grid East	Grid North	Latitude	Longitude	Closure Dist	Closure Dir	DLS	Bullid Rate	Turn Rate	Comments
(m)	(°)	(°)	(m)	(m)	(m)	(m)	(m)	(m)	(m)	(m)	(m)	(°)	(°/100ft)	(°/100ft)	(°/100ft)	
12645.00	89.750	345.360	6498.86	6008.62	5706.92	-1884.64	1674300.65	14321540.87	39°26'17.86"N	80°52'47.958"W	6010.06	341.725	0.58	-0.07	-0.58	
12739.00	89.660	343.790	6499.34	6102.37	5797.53	-1909.64	1674275.66	14321631.44	39°26'18.756"N	80°52'48.276"W	6103.94	341.769	1.67	-0.10	-1.67	
12834.00	89.600	340.870	6499.95	6197.31	5888.04	-1938.47	1674246.84	14321721.91	39°26'19.650"N	80°52'48.642"W	6198.93	341.777	3.07	-0.06	-3.07	
12928.00	90.030	338.990	6500.26	6291.30	5976.33	-1970.73	1674214.60	14321810.16	39°26'20.523"N	80°52'49.051"W	6292.87	341.750	2.05	0.46	-2.00	
13022.00	90.090	339.250	6500.16	6385.28	6064.15	-2004.23	1674181.11	14321897.95	39°26'21.992"N	80°52'49.477"W	6386.77	341.711	0.28	0.06	0.28	
13117.00	90.030	336.020	6500.06	6480.15	6151.99	-2040.38	1674144.98	14321985.76	39°26'22.261"N	80°52'49.936"W	6481.53	341.651	3.40	-0.06	-3.40	
13211.00	90.180	332.350	6499.89	6573.57	6236.60	-2081.30	1674104.07	14322070.33	39°26'23.097"N	80°52'50.456"W	6574.72	341.545	3.91	0.16	-3.90	
13306.00	89.570	347.990	6668.12	6322.78	6272.18	-2121.18	1674064.21	14322156.48	39°26'23.950"N	80°52'50.963"W	6669.11	341.454	5.97	-0.64	5.94	
13400.00	89.690	342.680	6500.70	6762.09	6411.27	-2152.80	1674032.60	14322244.93	39°26'24.825"N	80°52'51.364"W	6763.06	341.439	4.99	0.13	4.99	
13495.00	89.600	341.260	6501.29	6857.06	6501.60	-2182.21	1674003.21	14322335.23	39°26'25.718"N	80°52'51.738"W	6858.05	341.446	1.50	-0.09	-1.49	
13589.00	89.720	339.340	6501.85	6951.05	6590.10	-2213.89	1673971.54	14322423.69	39°26'26.593"N	80°52'52.140"W	6952.03	341.431	2.05	0.13	-2.04	
13683.00	89.750	339.170	6502.28	7045.03	6678.00	-2247.19	1673938.25	14322511.56	39°26'27.462"N	80°52'52.563"W	7045.96	341.402	0.18	0.03	-0.18	
13778.00	89.820	341.310	6502.64	7140.02	6767.40	-2279.30	1673908.15	14322600.92	39°26'28.346"N	80°52'52.971"W	7140.93	341.386	0.07	0.07	2.25	
13872.00	90.090	341.810	6502.71	7234.00	6856.57	-2309.03	1673876.43	14322690.06	39°26'29.228"N	80°52'53.348"W	7234.93	341.388	0.60	0.29	0.53	
13966.00	90.090	339.980	6502.57	7328.00	6945.39	-2339.80	1673845.68	14322778.84	39°26'30.106"N	80°52'53.739"W	7328.92	341.382	1.95	-1.95	-1.95	
14060.00	90.310	339.790	6502.24	7421.99	7033.66	-2372.13	1673813.36	14322867.07	39°26'30.979"N	80°52'54.150"W	7422.89	341.363	0.31	0.23	-0.20	
14155.00	90.150	343.420	6501.86	7516.96	7123.79	-2402.10	1673783.40	14322957.17	39°26'31.870"N	80°52'54.530"W	7517.88	341.366	3.82	-0.17	3.82	
14249.00	90.310	348.150	6501.48	7610.52	7214.88	-2425.18	1673760.34	14323048.22	39°26'32.771"N	80°52'54.823"W	7611.57	341.421	5.03	0.17	5.03	
14343.00	91.230	347.120	6500.22	7703.78	7306.69	-2445.30	1673740.22	14323140.00	39°26'33.678"N	80°52'55.078"W	7705.02	341.496	1.47	0.98	-1.10	
14437.00	92.770	343.710	6496.93	7797.36	7397.59	-2468.95	1673716.58	14323230.86	39°26'34.577"N	80°52'55.378"W	7798.72	341.544	3.98	1.64	-3.63	
14531.00	90.340	335.290	6494.38	7891.22	7485.52	-2501.83	1673683.71	14323318.75	39°26'35.446"N	80°52'55.795"W	7892.54	341.519	9.32	-2.59	-8.96	
14625.00	89.820	333.360	6494.25	7984.67	7570.23	-2542.56	1673643.00	14323403.43	39°26'36.284"N	80°52'56.313"W	7985.80	341.435	2.13	-0.55	-2.05	
14719.00	89.940	336.430	6494.44	8078.21	7655.34	-2582.43	1673603.14	14323488.51	39°26'37.126"N	80°52'56.820"W	8079.19	341.359	3.27	0.13	3.27	
14814.00	89.320	339.770	6495.06	8173.12	7743.47	-2617.86	1673567.73	14323576.60	39°26'37.997"N	80°52'57.270"W	8174.02	341.321	3.58	-0.65	3.52	
14908.00	89.260	344.290	6496.22	8267.05	7832.86	-2648.85	1673538.75	14323665.95	39°26'38.881"N	80°52'57.638"W	8267.98	341.329	4.81	-0.06	4.81	
15002.00	88.650	343.420	6497.94	8360.87	7923.13	-2672.99	1673512.62	14323756.19	39°26'39.774"N	80°52'57.970"W	8361.87	341.357	1.13	-0.65	-0.93	
15096.00	88.710	337.990	6500.10	8454.81	8011.80	-2704.03	1673481.60	14323844.82	39°26'40.651"N	80°52'58.364"W	8455.81	341.350	5.78	0.06	-5.78	
15190.00	88.280	335.250	6502.57	8548.56	8098.04	-2741.31	1673444.33	14323931.03	39°26'41.503"N	80°52'58.838"W	8549.45	341.288	2.95	-0.46	-2.91	
15285.00	88.370	337.760	6505.35	8643.28	8185.12	-2779.17	1673406.49	14324018.07	39°26'42.365"N	80°52'59.318"W	8644.07	341.246	2.64	0.09	2.64	
15379.00	89.200	338.420	6507.34	8737.18	8272.31	-2814.23	1673371.43	14324105.23	39°26'43.227"N	80°52'59.764"W	8737.91	341.212	1.13	0.88	0.70	

RECEIVED
Office of Oil and Gas
JUN 19 2018
WV Department of
Environmental Protection



Actual Wellpath Report

Leaseburg Unit 2H AWP Proj: 15580'
Page 8 of 10



REFERENCE WELLPATH IDENTIFICATION			
Operator	ANTERO RESOURCES CORPORATION	Slot	Slot #07
Area	Tyler County, WV	Well	Leaseburg Unit 2H
Field	Tyler	Wellbore	Leaseburg Unit 2H AWB
Facility	Edna Monroe Pad		

WELLPATH DATA (183 stations)																
MD	Inclination	Azimuth	TVD	Vert Sect	North	East	Grid East	Grid North	Latitude	Longitude	Closure Dist	Closure Dir	DLS	Build Rate	Turn Rate	Comments
[ft]	[°]	[°]	[ft]	[ft]	[ft]	[ft]	[US ft]	[US ft]			[ft]	[°]	["/100ft]	["/100ft]	["/100ft]	
15473.00	89.320	339.570	6508.56	8831.14	8360.06	-2847.93	1673337.76	14324192.94	39°26'44.094"N	80°53'00.192"W	8831.83	341.188	1.23	0.13	1.22	
15555.00	89.290	341.370	6509.55	8913.13	8437.33	-2875.33	1673310.36	14324270.18	39°26'44.858"N	80°53'00.540"W	8913.81	341.182	2.20	-0.04	2.20	
15580.00	89.290	341.370	6509.86	8938.12	8461.02	-2883.32	1673302.37	14324293.86	39°26'45.093"N	80°53'00.642"W	8938.81	341.182	0.00	0.00	0.00	Projected MD at TD: 15580'

HOLE & CASING SECTIONS - Ref Wellbore: Leaseburg Unit 2H AWB Ref Wellpath: Leaseburg Unit 2H AWP Proj: 15580'										
String/Diameter	Start MD	End MD	Interval	Start TVD	End TVD	Start N/S	Start E/W	End N/S	End E/W	
	[ft]	[ft]	[ft]	[ft]	[ft]	[ft]	[ft]	[ft]	[ft]	[ft]
20in Conductor	25.00	100.00	75.00	25.00	100.00	0.00	0.00	-0.10	-0.09	
17.5in Open Hole	100.00	522.00	422.00	100.00	521.99	-0.10	-0.09	-2.85	0.73	
13.375in Casing Surface	25.00	522.00	497.00	25.00	521.99	0.00	0.00	-2.85	0.73	
12.25in Open Hole	522.00	2617.00	2095.00	521.99	2615.96	-2.85	0.73	13.81	-37.08	
9.625in Casing Intermediate	25.00	2617.00	2592.00	25.00	2615.96	0.00	0.00	13.81	-37.08	
8.75in Open Hole	2617.00	5754.00	3137.00	2615.96	5725.71	13.81	-37.08	-299.03	48.54	
8.5in Open Hole	5754.00	15580.00	9826.00	5725.71	6509.86	-299.03	48.54	8461.02	-2883.32	
5.5in Casing Production	25.00	15580.00	15555.00	25.00	6509.86	0.00	0.00	8461.02	-2883.32	

RECEIVED
Office of Oil and Gas

JUN 19 2018

WV Department of
Environmental Protection



Actual Wellpath Report

Leaseburg Unit 2H AWP Proj: 15580'

Page 9 of 10



REFERENCE WELLPATH IDENTIFICATION			
Operator	ANTERO RESOURCES CORPORATION	Slot	Slot #07
Area	Tyler County, WV	Well	Leaseburg Unit 2H
Field	Tyler	Wellbore	Leaseburg Unit 2H AWB
Facility	Edna Monroe Pad		

TARGETS								
Name	TVD [ft]	North [ft]	East [ft]	Grid East [US ft]	Grid North [US ft]	Latitude	Longitude	Shape
Leaseburg Unit 2H BHL Rev-2	6443.95	8448.36	-2875.38	1673310.31	14324281.20	39°26'44.967"N	80°53'00.541"W	point
Leaseburg Unit 2H POE Rev-1	6494.00	70.73	35.31	1676219.84	14315906.93	39°25'22.129"N	80°52'23.589"W	point
Leaseburg Unit 2H LP Rev-2	6520.00	228.10	8.92	1676193.45	14316064.24	39°25'23.684"N	80°52'23.922"W	point

WELLPATH COMPOSITION - Ref Wellbore: Leaseburg Unit 2H AWB Ref Wellpath: Leaseburg Unit 2H AWP Proj: 15580'				
Start MD [ft]	End MD [ft]	Positional Uncertainty Model	Log Name/Comment	Wellbore
25.00	5614.00	Gyrodatta standard - Drop gyro or Multi-shot	03 Gyrodatta MS Gyro <8-3/4"> (100'-5602')	Leaseburg Unit 2H AWB
5614.00	15555.00	BHI AutoTrak Curve (Short)	04 BHI AT Curve <8-1/2"> (5614')(5754'-15555')	Leaseburg Unit 2H AWB
15555.00	15580.00	Blind Drilling (std)	Projection to bit	Leaseburg Unit 2H AWB

RECEIVED
Office of Oil and Gas

JUN 19 2018

WV Department of
Environmental Protection



Actual Wellpath Report
 Leaseburg Unit 2H AWP Proj: 15580'
 Page 10 of 10



REFERENCE WELLPATH IDENTIFICATION			
Operator	ANTERO RESOURCES CORPORATION	Slot	Slot #07
Area	Tyler County, WV	Well	Leaseburg Unit 2H
Field	Tyler	Wellbore	Leaseburg Unit 2H AWB
Facility	Edna Monroe Pad		

COMMENTS
<p>Wellpath general comments API: 47-095-02283-0000 BHI Job #: 8346751 Rig: Patterson 343 Duration: 01/25/2017-01/28/2017 Gyrodatta MS Gyro <8-3/4"> (100'-5602') BHI AT Curve <8-1/2"> (5614')(5754'-15555') Middlesex: 6404' MD / 6636' TVD Burkett: 6562' MD / 6437' TVD Tully: 6630' MD / 6469' TVD Marcellus POE: 6726' MD / 6500' TVD Projected MD at TD: 15580'</p>

RECEIVED
 Office of Oil and Gas

JUN 19 2018

WV Department of
 Environmental Protection

11/09/2018