



ANTERO RESOURCES CORPORATION

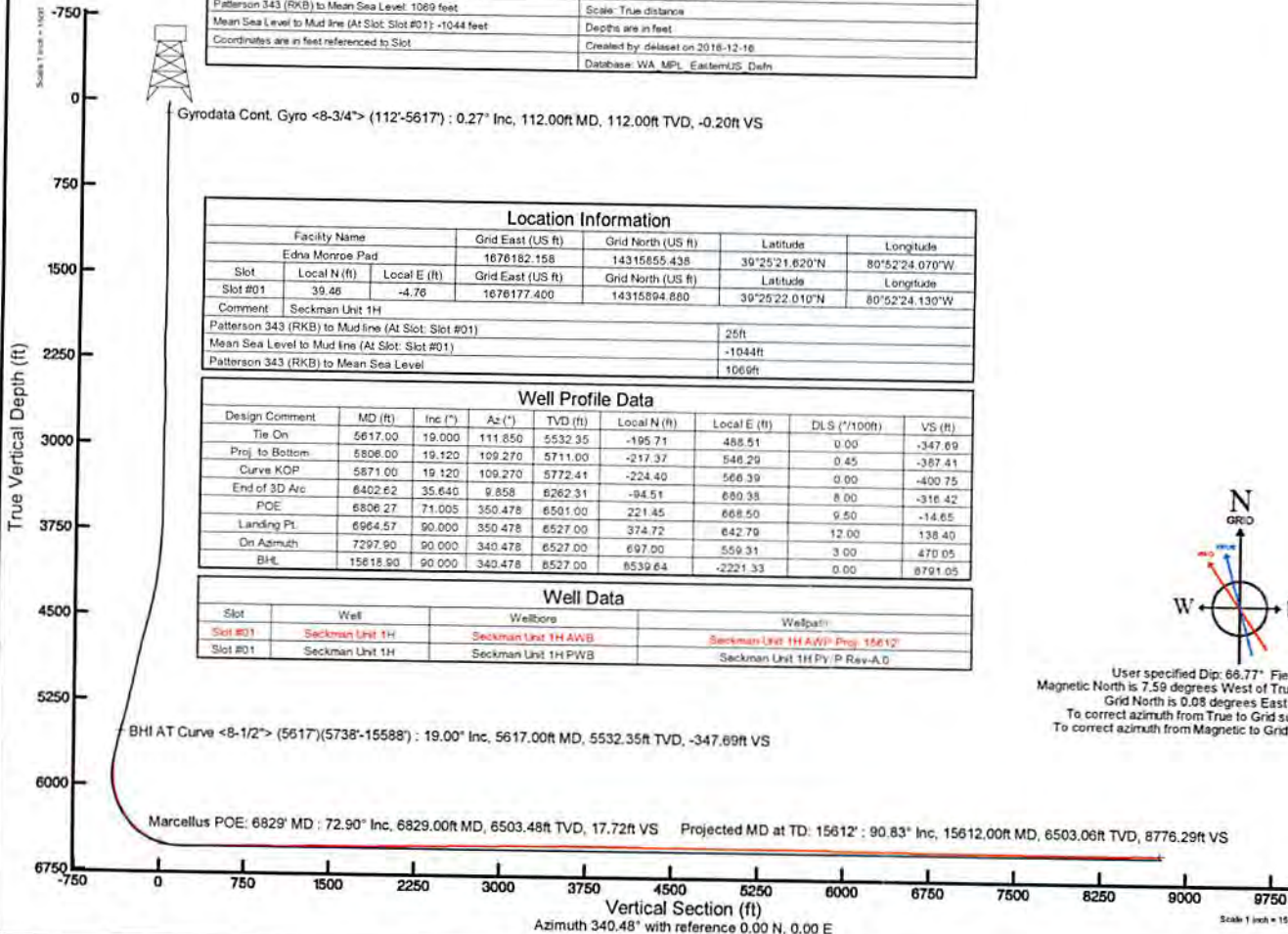
Location: Tyler County, WV
 Field: Tyler
 Facility: Edna Monroe Pad

Slot: Slot #01
 Well: Seckman Unit 1H
 Wellbore: Seckman Unit 1H PWB



API: 47-095-02284-0000
 BHI Job #: 8284645
 Rig: Patterson 343
 Duration: 12/09/2016-12/13/2016

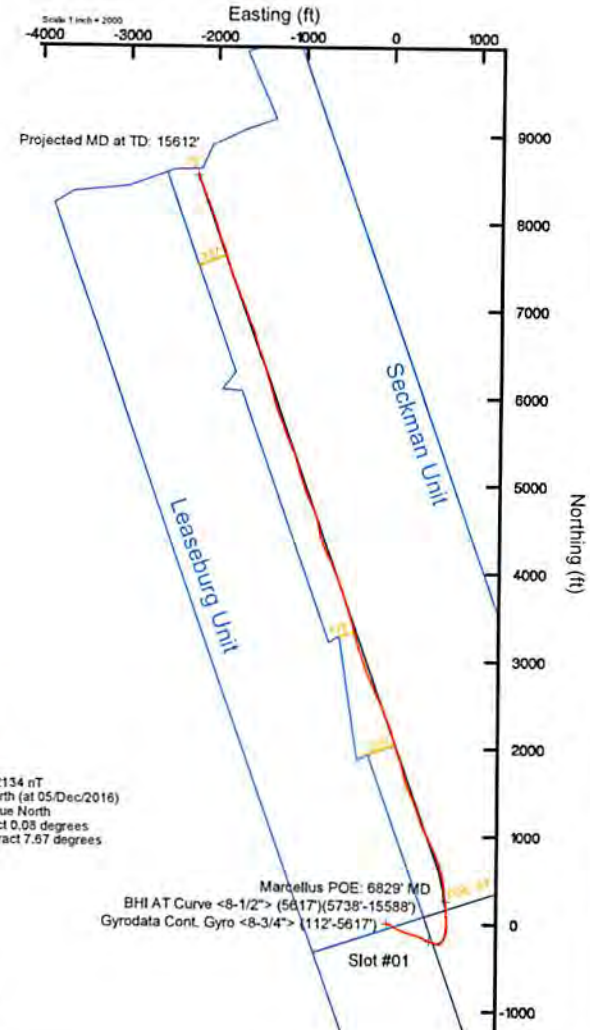
Plot reference wellpath is Seckman Unit 1H PWB Rev-A-D	Grid System: NAD27 / UTM Zone 17 North, US feet
True vertical depths are referenced to Patterson 343 (RKB)	* = Wellpath was transformed from a different geodetic datum
Measured depths are referenced to Patterson 343 (RKB)	North Reference: Grid north
Patterson 343 (RKB) to Mean Sea Level: 1069 feet	Scale: True distance
Mean Sea Level to Mud line (At Slot: Slot #01): -1044 feet	Depths are in feet
Coordinates are in feet referenced to Slot	Created by: delaset on 2016-12-16
	Database: WA_MPL_EasternUS_Defn



Location Information				
Facility Name	Grid East (US ft)	Grid North (US ft)	Latitude	Longitude
Edna Monroe Pad	1676182.158	14315855.438	39°25'21.620"N	80°52'24.070"W
Slot	Local N (ft)	Local E (ft)	Grid East (US ft)	Grid North (US ft)
Slot #01	39.46	-4.76	1676177.400	14315894.880
Comment	Seckman Unit 1H			
Patterson 343 (RKB) to Mud line (At Slot: Slot #01)	25ft			
Mean Sea Level to Mud line (At Slot: Slot #01)	-1044ft			
Patterson 343 (RKB) to Mean Sea Level	1069ft			

Well Profile Data								
Design Comment	MD (ft)	Inc (°)	Az (°)	TVD (ft)	Local N (ft)	Local E (ft)	DLS (°/100ft)	VS (ft)
Tie On	5617.00	19.000	111.850	5532.35	-195.71	488.51	0.00	-347.69
Proj. to Bottom	5806.00	19.120	109.270	5711.00	-217.37	546.29	0.45	-387.41
Curve KOP	5871.00	19.120	109.270	5772.41	-224.40	566.39	0.00	-400.75
End of 3D Arc	6402.62	35.640	9.858	6262.31	-84.51	680.38	8.00	-316.42
POE	6826.27	71.005	350.478	6501.00	221.45	668.50	9.50	-14.65
Landing Pt.	6964.57	90.000	350.478	6527.00	374.72	642.79	12.00	138.40
On Azimuth	7297.90	90.000	340.478	6527.00	697.00	559.31	3.00	470.05
BHL	15618.90	90.000	340.478	6527.00	8539.64	-2221.33	0.00	8791.05

Well Data			
Slot	Well	Wellbore	Wellpath
Slot #01	Seckman Unit 1H	Seckman Unit 1H AWB	Seckman Unit 1H AWB Proj: 15612'
Slot #01	Seckman Unit 1H	Seckman Unit 1H PWB	Seckman Unit 1H PWB Rev-A-D



User specified Dip: 66.77° Field: 52134 nT
 Magnetic North is 7.59 degrees West of True North (at 05/Dec/2016)
 Grid North is 0.08 degrees East of True North
 To correct azimuth from True to Grid subtract 0.08 degrees
 To correct azimuth from Magnetic to Grid subtract 7.67 degrees



Actual Wellpath Report

Seckman Unit 1H AWP Proj: 15612'
Page 1 of 10



REFERENCE WELLPATH IDENTIFICATION			
Operator	ANTERO RESOURCES CORPORATION	Slot	Slot #01
Area	Tyler County, WV	Well	Seckman Unit 1H
Field	Tyler	Wellbore	Seckman Unit 1H AWB
Facility	Edna Monroe Pad		

REPORT SETUP INFORMATION			
Projection System	NAD27 / UTM Zone 17 North, US feet	Software System	WellArchitect® 5.0
North Reference	Grid	User	Delaset
Scale	0.999601	Report Generated	16/Dec/2016 at 13:25
Convergence at slot	0.09° East	Database/Source file	WA_MPL_EasternUS_Defn/Seckman_Unit_1H_AWP_Proj_15612_.xml

WELLPATH LOCATION						
	Local coordinates		Grid coordinates		Geographic coordinates	
	North[ft]	East[ft]	Easting[US ft]	Northing[US ft]	Latitude	Longitude
Slot Location	39.46	-4.76	1676177.40	14315894.88	39°25'22.010"N	80°52'24.130"W
Facility Reference Pt			1676182.16	14315855.44	39°25'21.620"N	80°52'24.070"W
Field Reference Pt			0.00	0.00	0°00'00.000"	85°29'19.301"W

WELLPATH DATUM			
Calculation method	Minimum curvature	Patterson 343 (RKB) to Facility Vertical Datum	25.00ft
Horizontal Reference Pt	Slot	Patterson 343 (RKB) to Mean Sea Level	1069.00ft
Vertical Reference Pt	Patterson 343 (RKB)	Patterson 343 (RKB) to Mud Line at Slot (Slot #01)	25.00ft
MD Reference Pt	Patterson 343 (RKB)	Section Origin	N 0.00, E 0.00 ft
Field Vertical Reference	Mean Sea Level	Section Azimuth	340.48°



REFERENCE WELLPATH IDENTIFICATION

Operator	ANTERO RESOURCES CORPORATION
Area	Tyler County, WV
Field	Tyler
Facility	Edna Monroe Pad
Well	Wellbore
Well	Seckman Unit 1H
Well	Seckman Unit 1H AWB
Slot	Slot #01

Actual Wellpath Report
 Seckman Unit 1H AWP Proj: 15612
 Page 5 of 10



MD	Inclination	Azimuth	TVD	Vert Sect	North	East	Grid East	Grid North	Latitude	Longitude	Closure Dist	Closure Dir	DLS	Build Rate	Turn Rate	Comments
7153.00	91.630	344.890	6532.04	331.73	574.02	626.37	1676803.51	14316468.67	39°25'27.67"N	80°52'16.13"W	849.61	47.497	7.79	1.06	-7.72	
7247.00	93.940	341.550	6527.47	425.50	663.89	599.27	1676776.43	14316558.50	39°25'28.563"N	80°52'16.482"W	894.36	42.071	4.32	2.46	-3.55	
7341.00	90.710	337.610	6523.65	519.38	751.88	666.51	1676743.68	14316646.46	39°25'29.433"N	80°52'16.897"W	941.41	36.996	5.42	-3.44	-4.19	
7435.00	90.250	335.690	6522.86	613.16	838.17	529.25	1676706.44	14316732.72	39°25'30.287"N	80°52'17.371"W	991.28	32.270	2.10	-0.49	-2.04	
7529.00	90.650	335.630	6522.13	706.82	923.82	490.51	1676667.72	14316818.33	39°25'31.134"N	80°52'17.863"W	1045.86	27.967	0.43	-0.43	-0.06	
7624.00	90.950	333.560	6520.80	801.31	1009.62	449.76	1676626.98	14316904.09	39°25'31.982"N	80°52'18.381"W	1105.27	24.012	2.20	-2.18	-0.06	
7718.00	89.850	333.620	6520.14	894.62	1093.80	407.95	1676585.19	14316988.24	39°25'32.615"N	80°52'18.912"W	1167.40	20.454	1.17	-1.17	7.35	
7806.00	90.280	344.690	6522.30	1082.30	1269.99	343.28	1676548.61	14317074.72	39°25'33.670"N	80°52'19.376"W	1237.36	17.465	7.47	-1.31	7.35	
8000.00	91.290	338.990	6521.01	1176.22	1359.26	314.00	1676491.27	14317253.60	39°25'35.440"N	80°52'20.104"W	1315.57	15.126	4.76	1.77	4.43	
8094.00	92.680	334.370	6517.76	1269.93	1445.51	276.82	1676454.11	14317339.81	39°25'36.293"N	80°52'20.576"W	1471.78	10.841	5.13	-4.91	6.06	
8189.00	90.340	336.210	6515.25	1364.50	1531.77	237.13	1676414.43	14317426.04	39°25'37.146"N	80°52'21.081"W	1550.02	8.800	3.13	-2.46	1.94	
8283.00	90.090	342.590	6514.90	1458.43	1619.71	204.07	1676381.99	14317513.95	39°25'38.016"N	80°52'21.500"W	1632.52	7.181	6.79	-0.27	6.79	
8377.00	90.280	348.040	6514.60	1552.06	1710.61	180.25	1676357.58	14317604.80	39°25'38.914"N	80°52'21.802"W	1720.08	6.015	5.80	0.20	5.80	
8471.00	90.370	345.600	6514.07	1645.56	1801.93	158.02	1676335.36	14317696.09	39°25'39.817"N	80°52'22.084"W	1808.84	5.012	3.66	-0.10	-3.66	
8566.00	90.340	339.760	6513.47	1740.49	1892.34	128.96	1676306.31	14317786.46	39°25'40.711"N	80°52'22.453"W	1896.73	3.899	5.09	-0.03	-5.09	
8660.00	90.310	340.170	6512.94	1834.48	1980.66	96.76	1676274.12	14317874.74	39°25'41.584"N	80°52'22.861"W	1983.01	2.797	0.44	-0.03	-0.44	
8754.00	90.800	345.940	6512.03	1928.34	2070.53	69.37	1676246.74	14317964.58	39°25'42.473"N	80°52'23.209"W	2071.69	1.919	6.16	0.52	6.14	
8849.00	91.880	344.120	6509.81	2162.27	44.84	2251.38	1676192.50	14318056.29	39°25'43.380"N	80°52'23.520"W	2162.74	1.188	2.23	-1.14	-1.92	
8943.00	90.880	338.970	6507.56	2211.87	2339.77	-19.68	1676157.73	14318233.72	39°25'45.135"N	80°52'24.399"W	2251.43	0.984	5.58	-1.08	-5.48	
9038.00	90.620	338.070	6506.33	2271.14	2399.56	-54.47	1676122.96	14318321.00	39°25'46.858"N	80°52'25.237"W	2339.86	0.98	0.98	-0.26	-0.95	
9132.00	90.580	336.580	6503.79	2305.80	2427.10	-129.11	1676048.35	14318493.42	39°25'47.705"N	80°52'26.075"W	2427.71	358.714	0.45	-0.04	0.45	
9226.00	91.320	336.580	6502.20	2399.66	2513.95	-90.38	1676009.45	14318665.99	39°25'48.562"N	80°52'26.729"W	2515.57	357.941	2.18	0.79	-2.03	
9320.00	90.620	334.750	6500.08	2493.31	2599.58	-168.02	1676009.45	14318858.03	39°25'50.282"N	80°52'27.564"W	2602.78	357.157	2.08	-0.74	-1.95	
9415.00	90.650	336.880	6501.14	2587.98	2686.23	-168.02	1676009.45	14318858.03	39°25'51.156"N	80°52'27.980"W	2691.48	356.421	2.24	0.03	2.24	
9509.00	90.650	340.070	6499.72	2776.58	2860.14	-241.87	1675971.52	14318942.31	39°25'52.027"N	80°52'28.375"W	2779.86	355.166	1.47	0.00	-1.47	
9604.00	89.780	340.450	6498.61	2870.56	2948.61	-273.62	1675903.89	14318990.00	39°25'52.904"N	80°52'28.750"W	2870.35	354.698	1.95	0.40	4.81	
9698.00	91.570	340.450	6498.61	2964.53	3036.71	-306.35	1675871.17	14318990.00	39°25'52.904"N	80°52'28.750"W	3052.12	354.239	2.12	-1.15	-1.78	
9792.00	90.490	338.780	6496.92	2964.53	3036.71	-337.52	1675840.02	14319019.00	39°25'52.904"N	80°52'28.750"W	3143.54	353.836	3.99	-0.59	3.95	



Actual Wellpath Report

Seckman Unit 1H AWP Proj: 15612

Page 6 of 10



REFERENCE WELLPATH IDENTIFICATION

Operator	ANTERO RESOURCES CORPORATION
Area	Tyler County, WV
Field	Tyler
Facility	Edna Monroe Pad
Well	Seckman Unit 1H AWB
Slot	Slot #01

WELLPATH DATA (182 stations)

MD	Inclination	Azimuth	TVD	Vent Sect	North	East	Grid East	Grid North	Upl N	Upl E	Longitude	Latitude	Closure Dist	Closure Dir	DLS	Build Rate	Turn Rate	Comments
9981.00	0.65	344.310	6496.08	3153.39	3216.41	-364.66	1675812.89	14319110.00	39.2553.804	N	80°52'28.720	W	3237.01	353.532	2.06	0.75	1.92	
10075.00	90.620	344.660	6494.04	3247.15	3306.97	-389.80	1675787.76	14319200.53	39.2554.700	N	80°52'29.038	W	3329.87	353.277	0.37	-0.03	0.37	
10169.00	90.620	346.160	6494.02	3397.94	3397.94	-413.48	1675764.09	14319291.45	39.2554.700	N	80°52'29.339	W	3423.00	353.062	1.60	0.00	1.60	
10264.00	91.140	344.350	6492.56	3435.45	3489.79	-437.65	1675739.92	14319383.27	39.2556.507	N	80°52'29.645	W	3517.13	352.852	1.98	0.55	-1.91	
10358.00	90.220	340.340	6491.45	3529.37	3579.34	-466.15	1675711.44	14319472.79	39.2557.393	N	80°52'30.007	W	3609.57	352.580	4.38	-0.98	-4.27	
10453.00	89.940	343.750	6491.32	3624.32	3669.70	-495.43	1675682.17	14319563.11	39.2558.286	N	80°52'30.378	W	3702.99	352.311	3.60	-0.29	3.59	
10547.00	90.060	342.840	6491.32	3718.21	3759.73	-522.45	1675655.16	14319653.10	39.2559.176	N	80°52'30.721	W	3795.86	352.089	0.98	-0.13	-0.97	
10641.00	89.970	338.910	6491.29	3812.18	3848.26	-553.98	1675623.65	14319741.60	39.2600.052	N	80°52'31.121	W	3887.93	351.808	5.19	-0.10	-5.19	
10735.00	90.060	338.910	6491.27	3906.12	3935.68	-588.52	1675589.11	14319828.98	39.2601.916	N	80°52'31.560	W	3979.44	351.495	1.02	0.10	1.01	
10829.00	90.030	338.470	6491.19	4000.07	4023.25	-622.69	1675554.96	14319916.52	39.2603.782	N	80°52'31.994	W	4071.15	351.202	0.47	-0.03	-0.47	
10924.00	90.340	336.980	6490.89	4094.96	4111.16	-658.69	1675518.97	14320004.39	39.2605.652	N	80°52'32.451	W	4163.59	350.897	1.60	0.33	-1.57	
11018.00	89.540	332.330	6490.98	4188.45	4281.92	-698.92	1675478.76	14320089.28	39.2607.524	N	80°52'32.862	W	4253.89	350.543	5.02	-0.85	-4.95	
11112.00	89.020	332.850	6492.17	4281.92	4280.96	-739.24	1675438.45	14320174.13	39.2609.397	N	80°52'33.275	W	4344.32	350.203	4.84	-0.55	4.81	
11207.00	88.550	342.330	6494.18	4376.85	4399.94	-772.35	1675405.36	14320263.07	39.2611.269	N	80°52'33.685	W	4437.67	349.977	5.79	-0.49	5.77	
11301.00	90.580	348.960	6494.90	4470.41	4460.95	-795.64	1675382.08	14320354.04	39.2613.143	N	80°52'34.095	W	4531.35	349.747	7.38	2.16	7.05	
11396.00	90.980	348.100	6493.60	4564.46	4554.04	-814.53	1675363.19	14320447.10	39.2615.016	N	80°52'34.507	W	4626.31	349.519	1.00	0.42	-0.91	
11490.00	90.060	340.260	6492.75	4658.19	4644.41	-840.14	1675337.60	14320537.43	39.2616.889	N	80°52'34.920	W	4719.78	349.287	8.40	-0.98	-8.34	
11584.00	89.910	338.340	6492.77	4752.17	4732.34	-873.36	1675304.39	14320625.32	39.2618.762	N	80°52'35.332	W	4812.25	349.054	2.05	-0.16	-2.04	
11678.00	89.690	338.160	6493.71	4840.54	4904.96	-904.18	1675277.60	14320717.88	39.2620.635	N	80°52'35.745	W	4903.68	348.881	4.87	-0.30	-4.86	
11773.00	89.630	333.770	6493.15	4845.86	4818.22	-911.50	1675256.26	14320811.17	39.2622.508	N	80°52'36.157	W	4996.15	348.652	0.61	0.06	4.62	
11867.00	90.120	342.980	6493.87	5034.51	4993.58	-981.45	1675196.35	14320899.46	39.2624.381	N	80°52'36.569	W	5089.12	348.452	4.62	0.09	1.84	
11961.00	90.220	342.120	6493.59	5128.45	5083.26	-1009.63	1675168.17	14320987.10	39.2626.254	N	80°52'36.982	W	5182.55	348.280	4.00	-0.22	-3.99	
12056.00	89.880	342.580	6493.93	5222.40	5172.83	-1038.13	1675139.68	14321075.64	39.2628.127	N	80°52'37.395	W	5275.97	348.110	0.61	-0.36	0.49	
12150.00	89.970	344.330	6493.63	5317.27	5263.89	-1065.19	1675112.64	14321164.12	39.2630.000	N	80°52'37.808	W	5370.59	348.000	1.84	0.09	1.84	
12244.00	89.820	340.130	6493.81	5411.20	5353.39	-1093.87	1675083.97	14321252.60	39.2631.873	N	80°52'38.221	W	5464.00	348.000	4.47	-0.16	-4.47	
12338.00	90.030	336.380	6493.93	5505.11	5440.68	-1128.69	1675049.17	14321341.33	39.2633.746	N	80°52'38.634	W	5556.53	348.000	4.00	0.22	-3.99	
12433.00	89.480	337.480	6494.34	5599.93	5528.08	-1165.91	1675011.96	14321430.75	39.2635.619	N	80°52'39.047	W	5649.70	348.090	1.29	-0.58	1.16	
12527.00	89.600	340.840	6495.09	5693.89	5628.89	-1199.35	1674978.53	14321520.55	39.2637.492	N	80°52'39.460	W	5742.56	347.945	3.58	0.13	3.57	
12621.00	89.690	338.190	6495.67	5787.86	5703.97	-1232.24	1674945.65	14321609.88	39.2639.365	N	80°52'39.873	W	5835.55	347.810	2.82	-0.10	-2.82	
12716.00	89.380	338.720	6496.44	5882.80	5792.32	-1267.13	1674910.78	14321698.88	39.2641.238	N	80°52'40.286	W	5929.30	347.660	0.65	-0.33	0.56	



REFERENCE WELLPATH IDENTIFICATION

Operator	ANTERO RESOURCES CORPORATION
Area	Tyler County, WV
Field	Tyler
Facility	Edna Monroe Pad
Slot	Wellbore
Slot #01	Well
	Seckman Unit 1H
	Seckman Unit 1H AWB

Actual Wellpath Report
Seckman Unit 1H AWP Proj: 15612



MD	Inclination	Azimuth	TVD	Vent Sect	North	East	Grid East	Grid North	US M	US M	Latitude	Longitude	Closure Dist	Closure Dir	DLS	Build Rate	Turn Rate	Comments	
12810.00	89.850	6497.08	5976.78	5880.21	-1300.45	1674877.47	14321772.74	39°26'20.145"N	80°52'40.600"W	6022.30	347.529	1.20	0.50	1.10	-0.66	4.52	1.57	1.10	
12904.00	89.230	6497.83	6070.72	5969.53	-1329.69	1674848.25	14321862.02	39°26'21.028"N	80°52'40.971"W	6115.82	347.443	1.75	-0.66	4.52	1.57	1.57	1.57	4.24	
13093.00	89.820	6498.71	6259.31	6151.26	-1381.46	1674796.50	14322043.68	39°26'22.825"N	80°52'41.628"W	6304.48	347.342	4.24	-0.13	-4.24	1.57	1.57	1.57	4.24	
13187.00	89.380	6499.37	6353.23	6240.96	-1409.52	1674768.44	14322133.34	39°26'23.712"N	80°52'41.984"W	6398.15	347.273	2.54	-0.47	2.50	1.57	1.57	1.57	2.50	
13281.00	89.660	6500.15	6447.08	6331.21	-1435.81	1674742.16	14322223.55	39°26'24.604"N	80°52'42.317"W	6491.98	347.222	0.31	-0.09	1.57	1.57	1.57	1.57	2.54	
13376.00	89.480	6500.87	6542.00	6421.85	-1464.21	1674713.78	14322314.16	39°26'25.500"N	80°52'42.678"W	6586.66	347.156	2.35	-0.19	1.57	1.57	1.57	1.57	2.35	
13470.00	89.540	6502.43	6635.98	6510.17	-1496.33	1674681.67	14322402.44	39°26'26.373"N	80°52'43.086"W	6679.92	347.056	3.27	-0.91	1.57	1.57	1.57	1.57	3.27	
13568.00	89.820	6504.27	6728.93	6597.90	-1527.08	1674650.94	14322490.14	39°26'27.241"N	80°52'43.476"W	6772.31	346.968	4.64	-0.53	1.57	1.57	1.57	1.57	4.64	
13658.00	89.820	6505.16	6823.79	6889.02	-1553.90	1674624.12	14322581.22	39°26'28.142"N	80°52'43.816"W	6867.14	346.922	1.78	-0.75	1.57	1.57	1.57	1.57	1.78	
13752.00	90.650	6504.77	6917.72	6778.44	-1582.81	1674595.22	14322670.61	39°26'29.026"N	80°52'44.183"W	6960.79	346.857	4.92	-0.88	1.57	1.57	1.57	1.57	4.92	
13846.00	89.690	6504.49	7011.67	6866.03	-1616.91	1674561.13	14322758.16	39°26'29.892"N	80°52'44.616"W	7053.85	346.749	2.52	-1.02	1.57	1.57	1.57	1.57	2.52	
13941.00	89.600	6505.08	7106.59	6954.16	-1652.37	1674525.69	14322846.26	39°26'30.764"N	80°52'45.067"W	7147.77	346.634	0.94	-0.09	1.57	1.57	1.57	1.57	0.94	
14035.00	89.850	6505.53	7200.57	7042.54	-1684.35	1674493.73	14322934.60	39°26'31.638"N	80°52'45.473"W	7241.16	346.549	3.37	-0.27	1.57	1.57	1.57	1.57	3.37	
14129.00	90.150	6505.53	7294.56	7130.81	-1716.61	1674461.47	14323022.84	39°26'32.510"N	80°52'45.883"W	7334.53	346.465	3.78	-0.32	1.57	1.57	1.57	1.57	3.78	
14223.00	89.510	6505.81	7388.48	7218.14	-1751.41	1674426.69	14323110.12	39°26'33.374"N	80°52'46.325"W	7427.58	346.361	0.73	-0.68	1.57	1.57	1.57	1.57	0.73	
14318.00	90.000	6506.22	7483.40	7306.32	-1786.74	1674391.37	14323198.27	39°26'34.246"N	80°52'46.774"W	7521.62	346.258	0.71	-0.52	1.57	1.57	1.57	1.57	0.71	
14412.00	89.420	6506.69	7577.32	7393.55	-1821.76	1674356.37	14323285.47	39°26'35.109"N	80°52'47.218"W	7614.68	346.158	0.75	-0.62	1.57	1.57	1.57	1.57	0.75	
14506.00	89.380	6507.68	7671.28	7482.35	-1852.49	1674325.65	14323374.23	39°26'35.987"N	80°52'47.609"W	7708.26	346.094	5.48	-0.04	1.57	1.57	1.57	1.57	5.48	
14600.00	89.970	6508.21	7765.01	7573.02	-1877.26	1674300.89	14323464.86	39°26'36.883"N	80°52'47.923"W	7802.22	346.078	2.72	-0.63	1.57	1.57	1.57	1.57	2.72	
14695.00	90.550	6507.78	7859.85	7664.10	-1904.15	1674274.01	14323556.91	39°26'37.784"N	80°52'48.264"W	7897.10	346.047	5.13	-1.04	1.57	1.57	1.57	1.57	5.13	
14789.00	89.570	6507.68	7953.84	7752.37	-1936.43	1674241.75	14323644.15	39°26'38.667"N	80°52'48.674"W	7990.56	345.975	2.79	-1.04	1.57	1.57	1.57	1.57	2.79	
14882.00	89.480	6508.45	8046.82	7839.66	-1968.51	1674209.68	14323731.40	39°26'39.520"N	80°52'49.081"W	8083.02	345.905	2.41	-0.10	1.57	1.57	1.57	1.57	2.41	
14976.00	89.780	6509.06	8140.77	7929.16	-1997.19	1674181.01	14323820.87	39°26'40.405"N	80°52'49.446"W	8176.82	345.862	2.76	0.32	2.74	2.74	2.74	2.74	2.76	
15071.00	90.180	6509.09	8235.71	8019.70	-2025.93	1674152.28	14323911.37	39°26'41.300"N	80°52'49.810"W	8271.64	345.823	2.42	0.42	-2.38	0.42	-2.38	0.42	2.42	
15165.00	90.220	6508.76	8329.70	8108.29	-2057.36	1674120.86	14323999.92	39°26'42.176"N	80°52'50.208"W	8365.23	345.762	1.69	0.04	-1.69	0.04	-1.69	0.04	1.69	
15259.00	90.650	6508.05	8423.66	8195.99	-2091.19	1674087.05	14324087.59	39°26'43.043"N	80°52'50.639"W	8458.56	345.687	1.68	0.46	-1.62	0.46	-1.62	0.46	1.68	
15353.00	90.920	6506.76	8517.60	8283.46	-2125.59	1674052.66	14324175.02	39°26'43.908"N	80°52'51.076"W	8551.83	345.608	0.86	0.29	0.81	0.29	0.81	0.29	0.86	
15448.00	90.800	6505.34	8612.54	8371.93	-2160.15	1674018.11	14324263.46	39°26'44.783"N	80°52'51.515"W	8646.13	345.532	0.54	-0.13	-0.53	-0.13	-0.53	-0.13	0.54	
15542.00	90.770	6504.05	8706.42	8458.88	-2195.85	1673982.43	14324350.37	39°26'45.643"N	80°52'51.969"W	8739.24	345.448	1.55	-0.03	-1.55	-0.03	-1.55	-0.03	1.55	



Actual Wellpath Report
 Seckman Unit 1H AWP Proj: 15612'
 Page 8 of 10



REFERENCE WELLPATH IDENTIFICATION

Operator	ANTERO RESOURCES CORPORATION	Slot #01
Area	Tyler County, WV	Seckman Unit 1H
Field	Tyler	Seckman Unit 1H AWB
Facility	Edna Monroe Pad	

WELLPATH DATA (182 stations)

MD [ft]	Inclination [°]	Azimuth [°]	TVD [ft]	Vert.Sect [ft]	North [ft]	East [ft]	Grid East [US ft]	Grid North [US ft]	Latitude	Longitude	Closure Dist [ft]	Closure Dir [°]	DLS [°/100ft]	Build Rate [°/100ft]	Turn Rate [°/100ft]	Comments
15588.00	90.830	337.250	6503.41	8752.33	8501.25	-2213.75	1673964.54	14324392.73	39°26'46.062"N	80°52'52.196"W	8784.76	345.404	0.67	0.13	0.65	
15612.00	90.830	337.250	6503.06	8776.29	8523.38	-2223.03	1673955.26	14324414.85	39°26'46.280"N	80°52'52.314"W	8808.51	345.382	0.00	0.00	0.00	Projected MD at TD: 15612'

HOLE & CASING SECTIONS - Ref Wellbore: Seckman Unit 1H AWB Ref Wellpath: Seckman Unit 1H AWP Proj: 15612'

String/Diameter	Start MD [ft]	End MD [ft]	Interval [ft]	Start TVD [ft]	End TVD [ft]	Start N/S [ft]	Start E/W [ft]	End N/S [ft]	End E/W [ft]
20in Conductor	25.00	100.00	75.00	25.00	100.00	0.00	0.00	-0.15	0.04
17.5in Open Hole	100.00	550.00	450.00	100.00	550.00	-0.15	0.04	-1.51	0.23
13.375in Casing Surface	25.00	527.00	502.00	25.00	527.00	0.00	0.00	-1.47	0.25
12.25in Open Hole	550.00	2682.00	2132.00	550.00	2681.74	-1.51	0.23	5.48	-3.26
9.625in Casing Intermediate	25.00	2655.00	2630.00	25.00	2654.75	0.00	0.00	5.63	-2.42

TARGETS

Name	TVD [ft]	North [ft]	East [ft]	Grid East [US ft]	Grid North [US ft]	Latitude	Longitude	Shape
Seckman Unit 1H POE Rev-1	6501.00	221.45	668.50	1676845.63	14316116.24	39°25'24.189"N	80°52'15.607"W	point
Seckman Unit 1H BHL Rev-1	6527.00	8539.64	-2221.33	1673956.96	14324431.10	39°26'46.441"N	80°52'52.292"W	point
Seckman Unit 1H LP Rev-1	6527.00	374.72	642.79	1676819.93	14316269.45	39°25'25.705"N	80°52'15.932"W	point



Actual Wellpath Report

Seckman Unit 1H AWP Proj: 15612'

Page 9 of 10



REFERENCE WELLPATH IDENTIFICATION			
Operator	ANTERO RESOURCES CORPORATION	Slot	Slot #01
Area	Tyler County, WV	Well	Seckman Unit 1H
Field	Tyler	Wellbore	Seckman Unit 1H AWB
Facility	Edna Monroe Pad		

WELLPATH COMPOSITION - Ref Wellbore: Seckman Unit 1H AWB Ref Wellpath: Seckman Unit 1H AWP Proj: 15612'				
Start MD (ft)	End MD (ft)	Positional Uncertainty Model	Log Name/Comment	Wellbore
25.00	5617.00	Gyrodatta standard - Continuous gyro	03 Gyrodatta Cont. Gyro <8-3/4"> (100'-5605')	Seckman Unit 1H AWB
5617.00	15588.00	BHI AutoTrak Curve (Short)	04 BHI AT Curve <8-1/2"> (5617')(5738'-15588')	Seckman Unit 1H AWB
15588.00	15612.00	Blind Drilling (std)	Projection to bit	Seckman Unit 1H AWB



Actual Wellpath Report

Seckman Unit 1H AWP Proj: 15612'

Page 10 of 10



REFERENCE WELLPATH IDENTIFICATION			
Operator	ANTERO RESOURCES CORPORATION	Slot	Slot #01
Area	Tyler County, WV	Well	Seckman Unit 1H
Field	Tyler	Wellbore	Seckman Unit 1H AWB
Facility	Edna Monroe Pad		

COMMENTS
<p>Wellpath general comments API: 47-095-02284-0000 BHI Job #: 8284645 Rig: Patterson 343 Duration: 12/09/2016-12/13/2016 Gyrodatta Cont. Gyro <8-3/4"> (112'-5617') BHI AT Curve <8-1/2"> (5617')(5738'-15588') Middlesex: 6511' MD Burket: 6674' MD Tully: 6727' MD Marcellus POE: 6829' MD Projected MD at TD: 15612'</p>