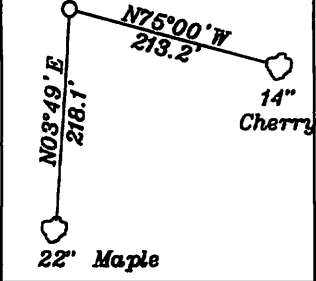
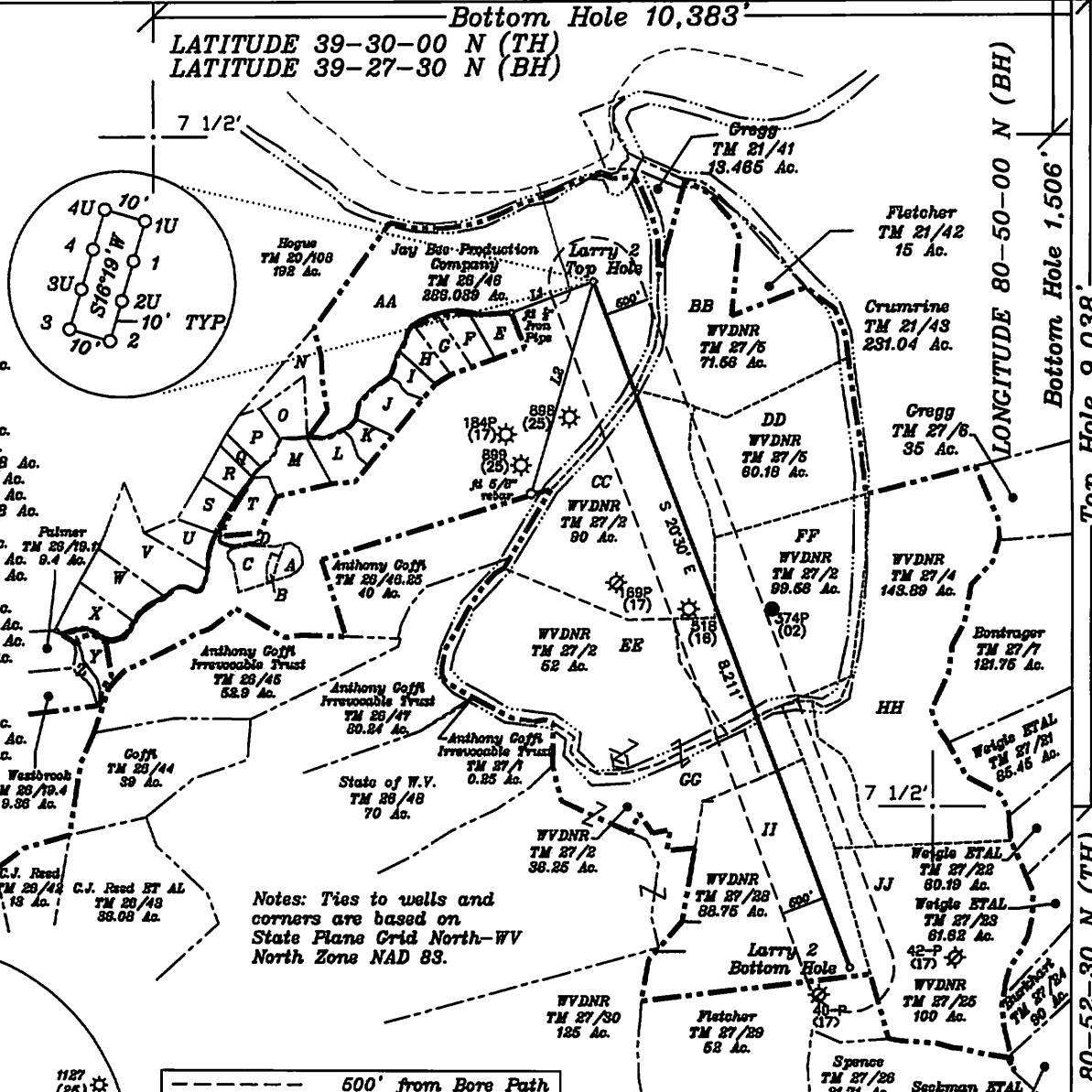
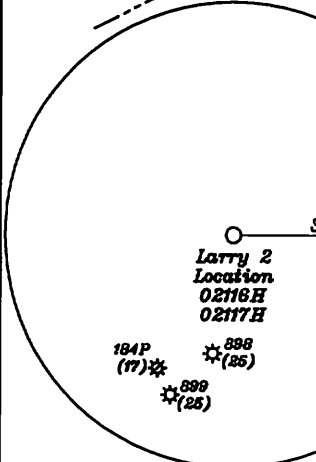
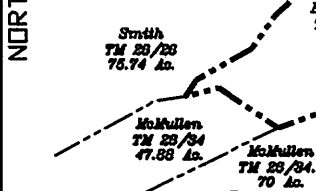


References—Magnetic North
Location
Larry 2



Bottom Hole 10,383'
LATITUDE 39-30-00 N (TH)
LATITUDE 39-27-30 N (BH)

- A-Peak TM 28-48.8 2.078 Ac.
- B-Peak TM 28-46.20 0.852 Ac.
- C-Peak TM 28-46.19 4.59 Ac.
- D-Peak TM 28-46.21 0.22 Ac.
- E-Suiser TM 20-710 4.412 Ac.
- F-Kelly TM 28-46.18 4.323 Ac.
- G-Kelly TM 28-46.17 4.114 Ac.
- H-Johnson TM 28-46.23 3.598 Ac.
- I-Johnson TM 28-46.22 2.92 Ac.
- J-Holiday TM 28-46.13 5.94 Ac.
- K-Holiday TM 28-46.12 3.238 Ac.
- L-Kans TM 28-46.3 5.4 Ac.
- M-Patera TM 28-46.7 7.32 Ac. TM 28/19.1
- N-JayBee TM 28-46.14 8.692 Ac. 9.4 Ac.
- O-Plitman TM 28-46.2 5.135 Ac.
- P-Johnson TM 28-46.9 5 Ac.
- Q-Patera TM 28-46.8 1.702 Ac.
- R-Patera TM 28-46.16 3.722 Ac.
- S-JayBee TM 28-46.16 5.094 Ac.
- T-Shrader TM 28-46.1 5.58 Ac.
- U-Ison TM 28-46.10 4.98 Ac.
- V-Doty TM 28-46.5 13.14 Ac.
- W-Kans TM 28-46.4 8.1 Ac.
- X-Walton TM 28-46.11 6.43 Ac.
- Y-JayBee TM 28-46.24 3.058 Ac.
- Z-JayBee TM 28-19.9 1.486 Ac.



- Lease Numbers
- AA-Jay Bee Production Company TM 28-46 - RT2
 - BB-WVDNR TM 27-5 - T8002B
 - CC-WVDNR TM 27-2 - T8000E
 - DD-WVDNR TM 27-5 - T8002A
 - EE-WVDNR TM 27-2 - T8000A
 - FF-WVDNR TM 27-2 - T8000C
 - GG-WVDNR TM 27-2 - T8000D
 - HH-WVDNR TM 27-4 - T8015
 - II-WVDNR TM 27-28 - T8014
 - JJ-WVDNR TM 27-25 - T8062

NUMBER	DIRECTION	DISTANCE
L1	N69°15'E	988'
L2	N16°29'E	2,478'

Top Hole
Geo NAD 83- 39.475189 N, 80.880710 W
UTM NAD 83(Meters)- 4369517.76 N, 510260.05 E
UTM NAD 83(Feet)- 14335659.52 N, 1674078.17 E

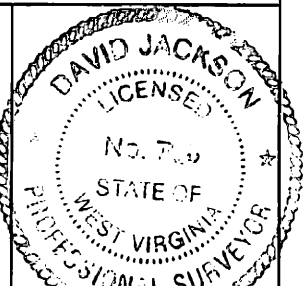
Bottom Hole
Geo NAD 83- 39.454198 N, 80.870106 W
UTM NAD 83(Meters)- 4367189.48 N, 511176.48 E
UTM NAD 83(Feet)- 14328020.82 N, 1677081.54 E

(+) DENOTES LOCATION OF WELL ON UNITED STATES TOPOGRAPHIC MAPS

FILE NO. _____
DRAWING NO. 1
SCALE 1" = 2000'
MINIMUM DEGREE OF ACCURACY 1 in 200
PROVEN SOURCE OF ELEVATION GPS
submeter unit

I THE UNDERSIGNED, HEREBY CERTIFY THAT THIS PLAT IS CORRECT TO THE BEST OF MY KNOWLEDGE AND BELIEF AND SHOWS ALL THE INFORMATION REQUIRED BY LAW AND THE RULES ISSUED AND PRESCRIBED BY THE DEPARTMENT OF ENVIRONMENTAL PROTECTION.

(SIGNED) David Jackson
R.P.E. _____ L.L.S. 708



STATE OF WEST VIRGINIA
Division of Environmental Protection
OFFICE OF OIL AND GAS

DATE September 29, 2015
OPERATOR'S WELL NO. Larry 2
API WELL NO. _____

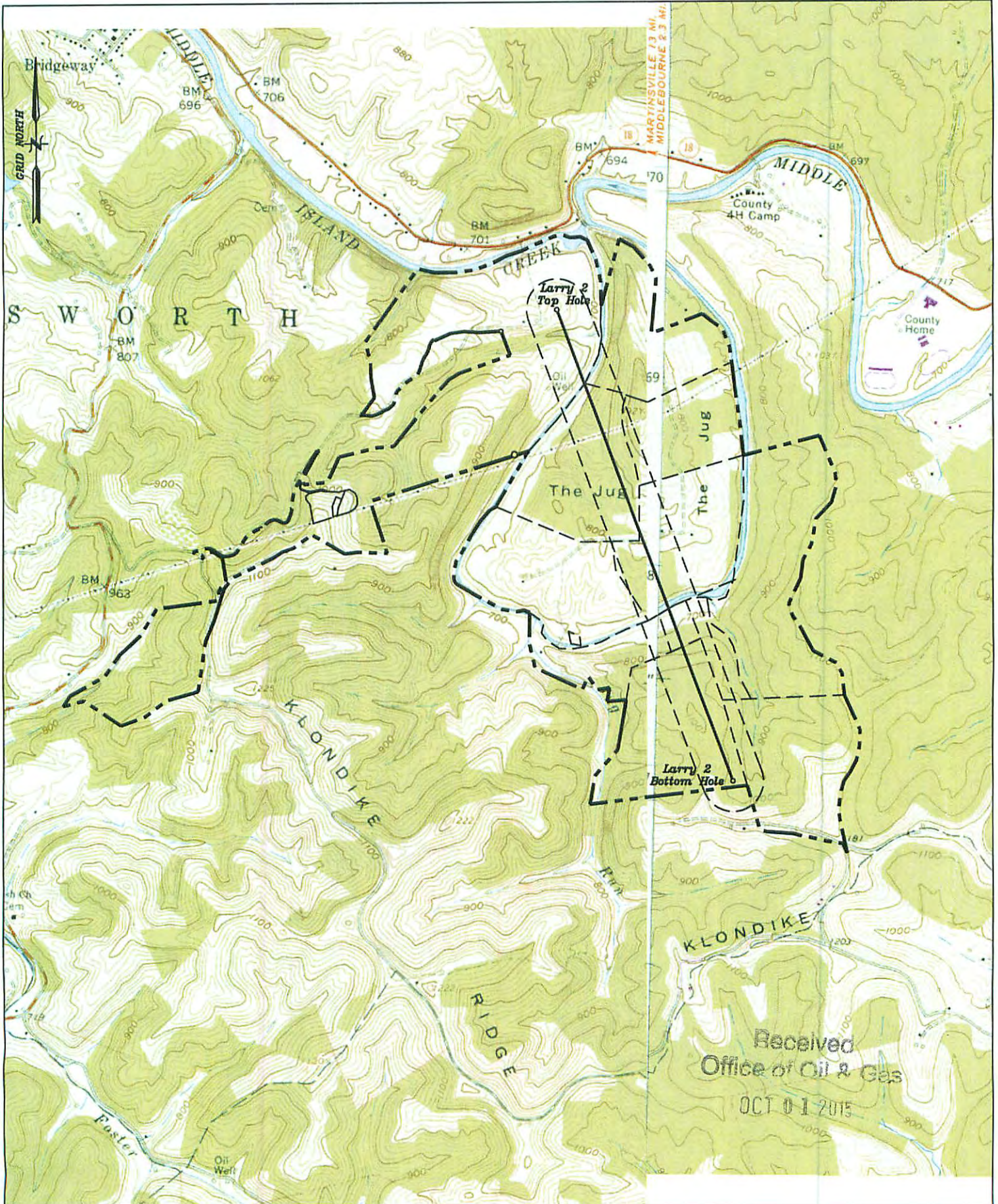
WELL TYPE: OIL X GAS X LIQUID INJECTION _____ WASTE DISPOSAL _____
(IF "GAS") PRODUCTION X STORAGE _____ DEEP _____ SHALLOW X
LOCATION: ELEVATION 739.4' WATER SHED Middle Island Creek
DISTRICT Ellsworth COUNTY Tyler
QUADRANGLE Middlebourne 7 1/2' (TH), Shirley 7 1/2' (BH)

SURFACE OWNER Jay Bee Production Company ACREAGE 286.03 ac.
OIL & GAS ROYALTY OWNER Ridgetop Capital LP, and Ridgetop Capital II, LP LEASE ACREAGE 286.03 ac.
LEASE NO. RT2

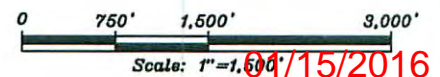
PROPOSED WORK: DRILL X CONVERT _____ DRILL DEEPER _____ REDRILL _____ FRACTURE OR STIMULATE X PLUG OFF OLD FORMATION _____ PERFORATE NEW FORMATION X OTHER PHYSICAL CHANGE IN WELL (SPECIFY) _____

PLUG AND ABANDON _____ CLEAN OUT AND REPLUG _____
TARGET FORMATION Marcellus ESTIMATED DEPTH TVD = 6,525' ; TMD = 15,235'
WELL OPERATOR Jay-Bee Oil & Gas, Inc. DESIGNATED AGENT Randy Broda
ADDRESS 1720 Route 22 E, Union, NJ 07083 ADDRESS 3570 Shields Hill Rd., Cairo, WV 26337

07/15/2016



Well: Larry 2
 Quad: Middlebourne 7 1/2'
 District: Ellsworth
 County: Tyler



Received
 Office of Oil & Gas
 OCT 01 2015

09/15/2016