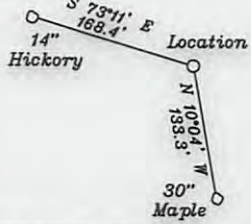


References



Top Hole
Geo NAD 83- 39.468073 N, 80.887458 W
UTM NAD 83(Meters)-4368727.33 N, 509680.64 E
UTM NAD 83(Feet)-14333066.24 N, 1672177.23 E

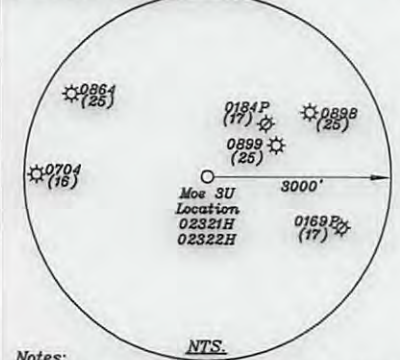
Landing Point
Geo NAD 83- 39.466989 N, 80.890314 W
UTM NAD 83(Meters)-4368606.71 N, 509435.13 E
UTM NAD 83(Feet)-14332870.50 N, 1671371.75 E

Bottom Hole
Geo NAD 83- 39.447573 N, 80.881706 W
UTM NAD 83(Meters)-4366452.78 N, 510178.43 E
UTM NAD 83(Feet)-14325603.83 N, 1673810.41 E

- A-Sulser TM. 20-110 4.412 Ac.
- B-Kelly et al TM. 26-46.18 4.323 Ac.
- C-Kelly et al TM. 26-46.17 4.114 Ac.
- D-Johnson TM. 26-46.23 3.598 Ac.
- E-Johnson TM. 26-46.22 2.92 Ac.
- F-Holliday TM. 26-46.13 5.94 Ac.
- G-Holliday TM. 26-46.12 3.238 Ac.
- H-Kanz TM. 26-46.3 5.4 Ac.
- I-Patera TM. 26-46.7 7.32 Ac.
- J-Peek TM. 26-46.8 2.079 Ac. DOAN
- K-Peek TM. 26-46.20 0.652 Ac. DOAN
- L-Peek TM. 26-46.19 4.59 Ac. DOAN
- M-WVDNR TM. 27-3 0.44 Ac.
- N-Shrader TM. 26-46.1 5.58 Ac.
- O-Peek TM. 26-46.21 0.22 Ac.
- P-JayBee TM. 26-46.14 8.692 Ac.
- Q-Pittman TM. 26-46.2 5.135 Ac.
- R-Johnson TM. 26-46.9 5 Ac.
- S-Patera TM. 26-46.6 1.702 Ac.
- T-Patera TM. 26-46.15 3.722 Ac.
- U-JayBee TM. 26-46.16 5.094 Ac.
- V-Ison TM. 26-46.10 4.98 Ac.
- W-Doty TM. 26-46.5 13.14 Ac.
- X-Kanz TM. 26-46.4 8.1 Ac.
- Y-Walton TM. 26-46.11 6.43 Ac.
- Z-JayBee TM. 26-46.24 3.059 Ac.
- AA-Palmer TM. 26-19.11 9.40 Ac.
- BB-Westbrook TM. 26-19.4 9.36 Ac.
- CC-Reed TM. 26-41 1 Ac.
- DD-Reed TM. 26-40 2.75 Ac.
- EE-Reed et al TM. 26-39 8.17 Ac.
- FF-JayBee Oil & Gas, Inc. TM. 26-19.9 1.496 Ac.
- GG-WVDNR TM. 29-7 7.5 Ac.

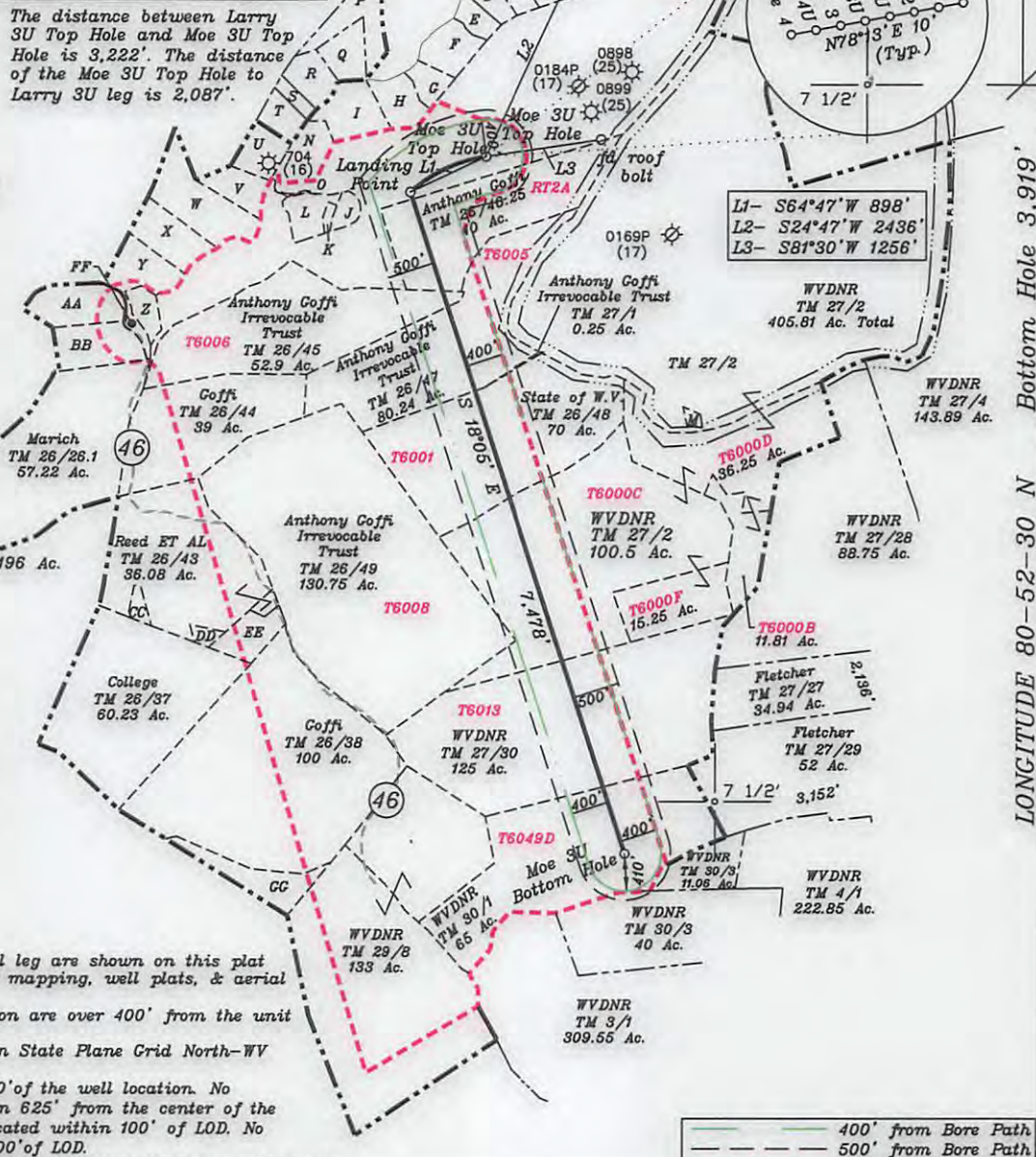
The distance between Larry 3U Top Hole and Moe 3U Top Hole is 3,222'. The distance of the Moe 3U Top Hole to Larry 3U leg is 2,087'.

NORTH



- Notes:**
1. All wells within 500' of the horizontal leg are shown on this plat based upon information taken from DEP mapping, well plats, & aerial photos.
 2. Well bore path and surface hole location are over 400' from the unit boundary.
 3. Ties to wells and corners are based on State Plane Grid North-WV North Zone NAD 83.
 4. No water wells were found within 250' of the well location. No dwellings or buildings were found within 625' from the center of the proposed pad. No perennial stream is located within 100' of LOD. No producing trout stream located within 300' of LOD.

(+) DENOTES LOCATION OF WELL ON UNITED STATES TOPOGRAPHIC MAPS



— 400' from Bore Path
- - - 500' from Bore Path
- - - Unit Boundary Line

LONGITUDE 80-52-30 N Bottom Hole 3,919' Top Hole 11,630'

FILE NO. _____
DRAWING NO. 1
SCALE 1" = 2000'
MINIMUM DEGREE OF ACCURACY 1 in 200
PROVEN SOURCE OF ELEVATION GPS
submeter unit

I THE UNDERSIGNED, HEREBY CERTIFY THAT THIS PLAT IS CORRECT TO THE BEST OF MY KNOWLEDGE AND BELIEF AND SHOWS ALL THE INFORMATION REQUIRED BY LAW AND THE RULES ISSUED AND PRESCRIBED BY THE DEPARTMENT OF ENVIRONMENTAL PROTECTION.

(SIGNED) David Jackson
R.P.E. _____ P.S. 708



STATE OF WEST VIRGINIA
Division of Environmental Protection
OFFICE OF OIL AND GAS

DATE June 28, 2016
OPERATOR'S WELL NO. Moe 3U
API WELL NO. _____

WELL TYPE: OIL GAS LIQUID INJECTION _____ WASTE DISPOSAL _____
(IF "GAS") PRODUCTION STORAGE _____ DEEP SHALLOW _____

LOCATION: ELEVATION 961.9' WATER SHED Middle Island Creek
DISTRICT Ellsworth COUNTY Tyler
QUADRANGLE Middlebourne 7 1/2'

SURFACE OWNER Jay Bee Production Company ACREAGE 286.03 ac.
OIL & GAS ROYALTY OWNER Ridgetop Capital LP and Ridgetop Capital II, LP LEASE ACREAGE 08/19/2016
LEASE NO. RT2

PROPOSED WORK: DRILL CONVERT _____ DRILL DEEPER _____ REDRILL _____ FRACTURE OR STIMULATE PLUG OFF OLD FORMATION _____ PERFORATE NEW FORMATION OTHER PHYSICAL CHANGE IN WELL (SPECIFY) _____

PLUG AND ABANDON _____ CLEAN OUT AND REPLUG _____
TARGET FORMATION Utica ESTIMATED DEPTH TVD = 10,840' TMD = 18,843'
WELL OPERATOR Jay-Bee Oil & Gas, Inc. DESIGNATED AGENT Randy Broda
ADDRESS 1720 Route 22 E, Union, NJ 07083 ADDRESS 3570 Shields Hill Rd., Cairo, WV 26337