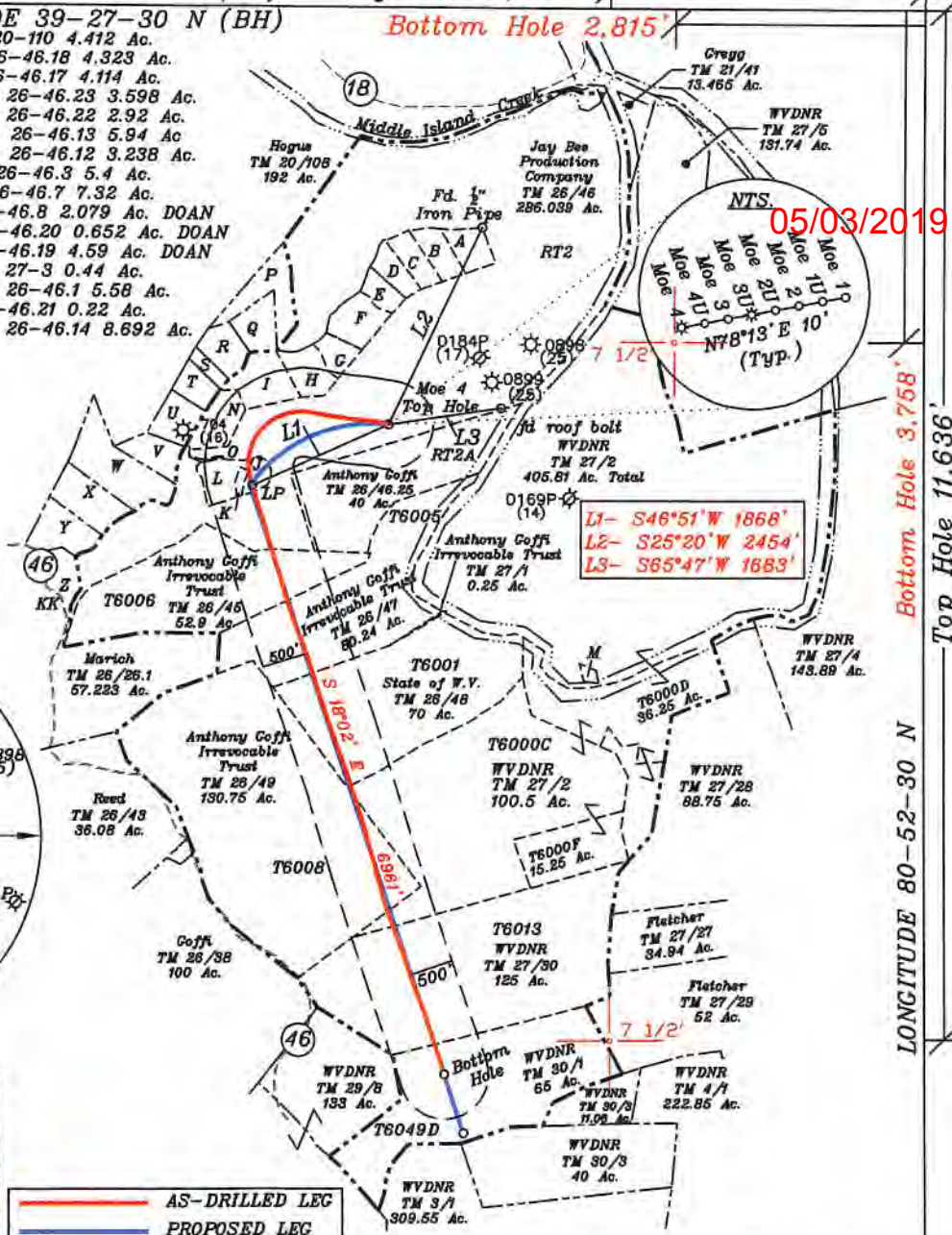
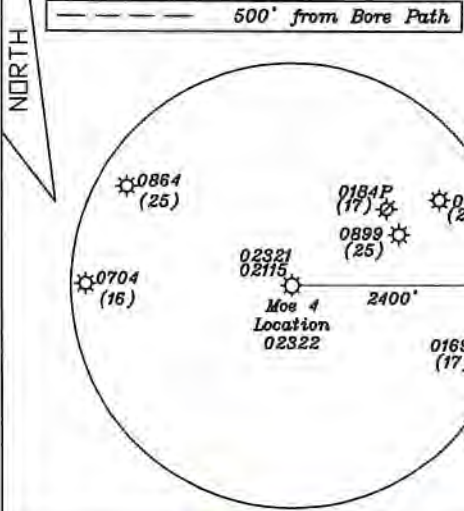


- LATITUDE 39-27-30 N (BH)
- A-Sulser TM. 20-110 4.412 Ac.
 - B-Boggs TM. 26-46.18 4.323 Ac.
 - C-Boggs TM. 26-46.17 4.114 Ac.
 - D-Johnson TM. 26-46.23 3.598 Ac.
 - E-Johnson TM. 26-46.22 2.92 Ac.
 - F-Holliday TM. 26-46.13 5.94 Ac.
 - G-Holliday TM. 26-46.12 3.238 Ac.
 - H-Gibson TM. 26-46.3 5.4 Ac.
 - I-Patera TM. 26-46.7 7.32 Ac.
 - J-Peek TM. 26-46.8 2.079 Ac. DOAN
 - K-Peek TM. 26-46.20 0.652 Ac. DOAN
 - L-Peek TM. 26-46.19 4.59 Ac. DOAN
 - M-WVDNR TM. 27-3 0.44 Ac.
 - N-Shrader TM. 26-46.1 5.58 Ac.
 - O-Peek TM. 26-46.21 0.22 Ac.
 - P-Jay Bee TM. 26-46.14 8.692 Ac.

- Q-Pittman TM. 26-46.2 5.135 Ac.
- R-Johnson TM. 26-46.9 5 Ac.
- S-Patera TM. 26-46.6 1.702 Ac.
- T-Patera TM. 26-46.15 3.722 Ac.
- U-JayBee TM. 26-46.16 5.094 Ac.
- V-Ison TM. 26-46.10 4.98 Ac.
- W-Doty TM. 26-46.5 13.14 Ac.
- X-Kanz TM. 26-46.4 8.1 Ac.
- Y-Watson TM. 26-46.11 6.43 Ac.
- Z-JayBee TM. 26-46.24 3.059 Ac.
- KK-JayBee TM. 26-19.9 1.496 Ac.



Top Hole	UTM NAD 83(Meters)- 4368725.31 N, 509871.72 E
Landing Point	UTM NAD 83(Meters)-4368507.88 N, 509200.99 E
Bottom Hole	UTM NAD 83(Meters)-4366302.35 N, 509967.49 E
As Drilled	
Top Hole	UTM NAD 83(Meters)-4368725.42 N, 509671.75 E
Landing Point	UTM NAD 83(Meters)-4368507.24 N, 509207.65 E
Bottom Hole	UTM NAD 83(Meters)-4366501.58 N, 509897.72 E

FILE NO. _____

DRAWING NO. 1

SCALE 1" = 2000'

MINIMUM DEGREE OF ACCURACY 1 in 200

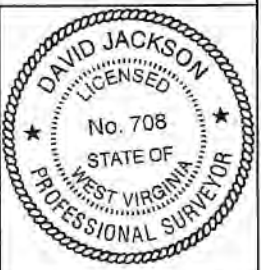
PROVEN SOURCE OF ELEVATION GPS

submeter unit

I THE UNDERSIGNED, HEREBY CERTIFY THAT THIS PLAT IS CORRECT TO THE BEST OF MY KNOWLEDGE AND BELIEF AND SHOWS ALL THE INFORMATION REQUIRED BY LAW AND THE RULES ISSUED AND PRESCRIBED BY THE DEPARTMENT OF ENVIRONMENTAL PROTECTION.

(SIGNED) David L Jackson

R.P.E. _____ L.L.S. 708



STATE OF WEST VIRGINIA
Division of Environmental Protection
OFFICE OF OIL AND GAS

DATE June 01, 2017

OPERATOR'S WELL NO. Moe 4

API WELL NO. AsDrilled

WELL TYPE: OIL X GAS X LIQUID INJECTION WASTE DISPOSAL STATE COUNTY PERMIT 47 - 095 - 02322

(IF 'GAS') PRODUCTION STORAGE DEEP SHALLOW X

LOCATION: ELEVATION 962.1' WATER SHED Middle Island Creek

DISTRICT Ellsworth COUNTY Tyler

QUADRANGLE Middlebourne 7 1/2'

SURFACE OWNER Jay Bee Production Company

OIL & GAS ROYALTY OWNER Ridgetop Capital LP and Ridgetop Capital II, LP LEASE ACREAGE 286.03 ac.

LEASE NO. RT2

PROPOSED WORK: DRILL CONVERT DRILL DEEPER REDRILL FRACTURE OR STIMULATE PLUG OFF OLD FORMATION PERFORATE NEW FORMATION OTHER PHYSICAL CHANGE IN WELL (SPECIFY) AsDrilled

PLUG AND ABANDON CLEAN OUT AND REPLUG

TARGET FORMATION Marcellus ESTIMATED DEPTH TVD= 6,421' TMD= 6,421'

WELL OPERATOR Jay-Bee Oil & Gas, Inc. DESIGNATED AGENT Randy Broda

ADDRESS 1720 Route 22 E, Union, NJ 07083 ADDRESS 3570 Shields Hill Rd., Cairo, WV 26337