

State of West Virginia  
Department of Environmental Protection - Office of Oil and Gas  
Well Operator's Report of Well Work

API 47-095-2323 County Tyler District Ellsworth  
Quad \_\_\_\_\_ Pad Name \_\_\_\_\_ Field/Pool Name \_\_\_\_\_  
Farm name Donald K. Baker Well Number Yellow Poplar #1V-1  
Operator (as registered with the OOG) Alliance Petroleum Corporation  
Address 4150 Belden Village Ave. NW Suite 410 City Canton State Ohio Zip 44718-2553

As Drilled location NAD 83/UTM Attach an as-drilled plat, profile view, and deviation survey  
Top hole Northing \_\_\_\_\_ Easting \_\_\_\_\_  
Landing Point of Curve Northing \_\_\_\_\_ Easting \_\_\_\_\_  
Bottom Hole Northing \_\_\_\_\_ Easting \_\_\_\_\_

Elevation (ft) 729 GL Type of Well  New  Existing Type of Report  Interim  Final  
Permit Type  Deviated  Horizontal  Horizontal 6A  Vertical Depth Type  Deep  Shallow  
Type of Operation  Convert  Deepen  Drill  Plug Back  Redrilling  Rework  Stimulate  
Well Type  Brine Disposal  CBM  Gas  Oil  Secondary Recovery  Solution Mining  Storage  Other \_\_\_\_\_  
Type of Completion  Single  Multiple Fluids Produced  Brine  Gas  NGL  Oil  Other \_\_\_\_\_  
Drilled with  Cable  Rotary

Drilling Media Surface hole  Air  Mud  Fresh Water Intermediate hole  Air  Mud  Fresh Water  Brine  
Production hole  Air  Mud  Fresh Water  Brine  
Mud Type(s) and Additive(s)  
None - Soap - KCL - Clay Sta

Date permit issued 11/19/15 Date drilling commenced 5/17/16 Date drilling ceased 5/23/16  
Date completion activities began 5/27/16 Date completion activities ceased \_\_\_\_\_  
Verbal plugging (Y/N) \_\_\_\_\_ Date permission granted \_\_\_\_\_ Granted by \_\_\_\_\_

Please note: Operator is required to submit a plugging application within 5 days of verbal permission to plug

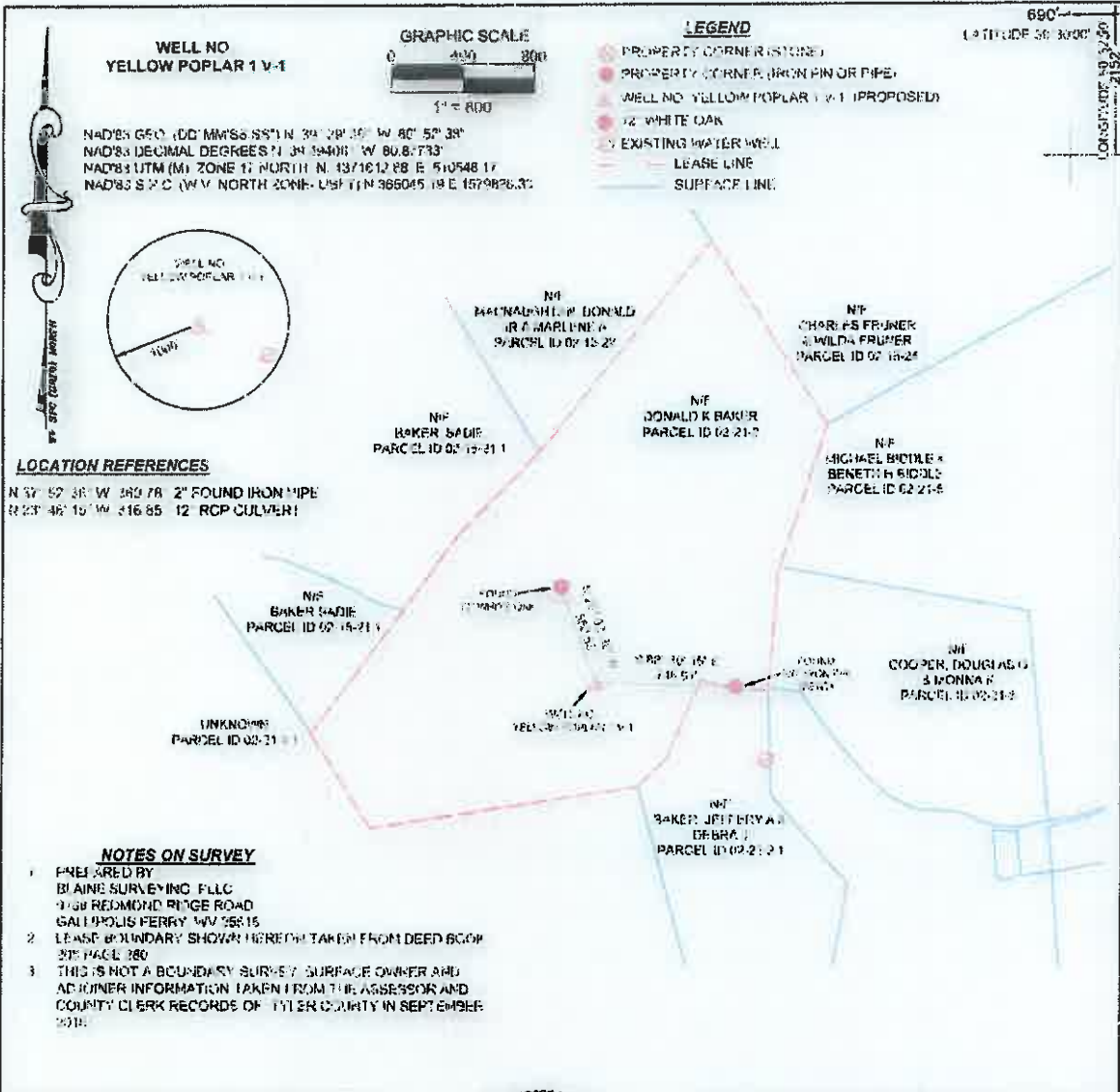
Received  
Office of Oil & Gas

Freshwater depth(s) ft 0-300' Open mine(s) (Y/N) depths NOCT 24 2016  
Salt water depth(s) ft 1414' Void(s) encountered (Y/N) depths N  
Coal depth(s) ft None In countered Cavern(s) encountered (Y/N) depths N  
Is coal being mined in area (Y/N) N

**APPROVED** by:

NAME: [Signature]  
DATE: 12/6/16

02/03/2017



**MINIMUM DEGREE FILE #** YELLOW  
**OF ACCURACY** POPLAR 1 V-1  
**SUB-METTER** SCALE 1" = 800'

**HORIZONTAL AND VERTICAL CONTROL DETERMINED BY**  
**DGPS (MAPPING GRADE TIE TO CORS NETWORK)**



I, THE UNDERSIGNED HEREBY CERTIFY THAT THIS PLAN IS CORRECT TO THE BEST OF MY KNOWLEDGE AND BELIEF AND SHOWS ALL THE INFORMATION REQUIRED BY LAW AND THE REGULATIONS ISSUED AND DESCRIBED BY THE DEPARTMENT OF ENVIRONMENTAL PROTECTION

Signed: \_\_\_\_\_  
 LLS: \_\_\_\_\_ DATE: \_\_\_\_\_

(+) DENOTES LOCATION OF WELL ON UNITED STATES TOPOGRAPHIC MAPS  
 DATE MARCH 31 2014  
REVISED, 2014  
 OPERATORS WELL NO. YELLOW POPLAR 1 V-1

API WELL NO 47 095 01323  
 STATE OH COUNTY PERANT

STATE OF WEST VIRGINIA  
 DEPARTMENT OF ENVIRONMENTAL PROTECTION  
 OFFICE OF OIL AND GAS

WELL TYPE OIL GAS X LIQUID WASTE IF  
 INJECTION DISPOSAL: IF "GAS" PRODUCTION X STORAGE DEEP SHALLOW X

LOCATION  
 ELEVATION 729' WATERSHED OUTLET MIDDLE ISLAND CREEK  
 DISTRICT ELLSWORTH COUNTY TYLEE QUADRANGLE MIDDLEBOURNE 7 5

SURFACE OWNER DONALD K BAKER ACREAGE 130.45 +/-  
 ROYALTY OWNER DONALD K BAKER ACREAGE 130.45 +/-

PROPOSED WORK LEASE NO 101 24 2018  
 DRILL X CONVERT DRILL DEEPER REDRILL FRACTURE OR STIMULATE X PLUG OFF OLD  
 FORMATION PERFORATE NEW FORMATION PLUG AND ABANDON CLEAN OUT AND REPLUG OTHER  
 PHYSICAL CHANGE IN WELL (SPECIFY) \_\_\_\_\_ TARGET FORMATION BENSON  
 ESTIMATED DEPTH TVD 4780'

WELL OPERATOR ALLIANCE PETROLEUM CORPORATION DESIGNATED AGENT JEFFREY SAYGER  
 ADDRESS 4150 BELDEN VILLAGE AVE NW SUITE 410 ADDRESS 16 FOX HILL TERRACE  
CANTON OH 44718-2553 PARKERSBURG WV 26101

02/03/2017

API 47-095 - 2323 Farm name Donald K. Baker Well number Yellow Poplar #1V-1

CASING STRINGS	Hole Size	Casing Size	Depth	New or Used	Grade wt/ft	Basket Depth(s)	Did cement circulate (Y/N) * Provide details below*
Conductor	15"	13-3/8"	32'	New	H-40 36#		N/A
Surface	12-1/4"	9-5/8"	380'	New	H-40 26#		Y
Coal							
Intermediate 1	8-3/4"	7"	1886'	New	J-55 17#		Y
Intermediate 2							
Intermediate 3							
Production	6-1/2"	4-1/2"	5067'	New	J-55 10.5#		N
Tubing		1-1/2"	4930'	Used	J-55 2.75#		N/A
Packer type and depth set							

Comment Details \_\_\_\_\_

CEMENT DATA	Class/Type of Cement	Number of Sacks	Slurry wt (ppg)	Yield (ft <sup>3</sup> /sks)	Volume (ft <sup>3</sup> )	Cement Top (MD)	WOC (hrs)
Conductor	Driven.	N/A					
Surface	Class A	132				CTS	8 hrs.
Coal							
Intermediate 1	Class A	258				CTS	8 hrs.
Intermediate 2							
Intermediate 3							
Production	50/50 POZ	156				2170'	
Tubing							

Drillers TD (ft) 5080' Loggers TD (ft) 5094'

Deepest formation penetrated Alexander Plug back to (ft) \_\_\_\_\_

Plug back procedure \_\_\_\_\_

Kick off depth (ft) \_\_\_\_\_

Check all wireline logs run  caliper  density  deviated/directional  induction  
 neutron  resistivity  gamma ray  temperature  sonic

Well cored  Yes  No Conventional Sidewall Were cuttings collected  Yes  No

DESCRIBE THE CENTRALIZER PLACEMENT USED FOR EACH CASING STRING \_\_\_\_\_

8 used on production string 4-1/2" - Every 100' off bottom

WAS WELL COMPLETED AS SHOT HOLE  Yes  No DETAILS \_\_\_\_\_

WAS WELL COMPLETED OPEN HOLE?  Yes  No DETAILS \_\_\_\_\_

OCT 24 2016

WERE TRACERS USED  Yes  No TYPE OF TRACER(S) USED \_\_\_\_\_







12956 Claylick Road  
Newark, Ohio 43056-9146  
Office 740-763-2758  
Home 740-763-2758  
Mobile 330-763-0479

# National Minerals Corporation

**ALLIANCE PETROLEUM CORPORATION**

**YELLOW POPULAR 1 V-1**

**ELLSWORTH DISTRICT**

**TYLER COUNTY, WEST VIRGINIA**

Received  
Office of Oil & Gas

OCT 24 2016

*Oil, Gas & Mineral  
Exploration*



02/03/2017

WELL: Alliance Petroleum Corporation 1 V-1 Yellow Popular

LOCATION: Ellsworth District, Tyler County, West Virginia.

PERMIT NUMBER: 47-095-02323.

ELEVATION: 729' Ground 739'KB.

STATUS: Preparing to complete as a gas producer.

CASING: 7" @ 1902'.

TOTAL DEPTH: 5080' Driller 5094' Logger.

CONTRACTOR: Nexus Drilling Co.

TOOLS: Rotary.

COMPLETED DRILLING: 5/23/2016.

FORMATION AT TOTAL DEPTH: Devonian shale.

ELECTRICAL SURVEYS: Gamma Ray-Compensated Density-Neutron-Caliper-Induction-Temperature by Appalachian Well Surveys.

SHOWS: Fair shows of gas were noted in the Alexander & Benson. Additional shows of gas were noted on the mud log in the Riley, Balltown, Warren, Bayard, Gantz, Weir and Big Injun.

FORMATION TOPS:	1 <sup>st</sup> Salt Sand	1160'	- 421
	2 <sup>nd</sup> Salt Sand	1296'	- 557
	3 <sup>rd</sup> Salt Sand	1414'	- 675
	Maxon Sandstone	1502'	- 763
	Big Lime	1536'	- 797
	Keener Sandstone	1650'	- 911
	Big Injun Sandstone	1673'	- 934
	Weir Sandstone	1985'	-1246
	Gantz Sandstone	2224'	-1485
	Gordon Stray Sandstone	2409'	-1670
	Gordon Sandstone	2433'	-1694
	4 <sup>th</sup> Sand	2518'	-1779
	5 <sup>th</sup> Sand	2559'	-1820
	Bayard Sandstone	2658'	-1919
	Warren Sandstone	3148'	-2409
	Speechley Sandstone	3383'	-2644
	Balltown Sandstone	3640'	-2901

Office of Oil and Gas  
OCT 24 2016

02/03/2017

Respectfully submitted,



NATIONAL MINERALS CORPORATION  
By: Douglas L. Core, President

May 25, 2016

Received  
Office of Oil & Gas  
OCT 24 2016

02/03/2017



Bradford Sandstone	3908'	-3169
Riley Sandstone	4292'	-3553
Benson Sandstone	4719'	-3980
Alexander Sandstone	4938'	-4199

## STRUCTURAL COMPARISON:

	Alliance Petroleum Yellow Popular 1 V-1	Alliance Petroleum Pignut Hickory 1 V-1
Big Lime	- 797	- 878
Gordon Sandstone	-1694	-1758
Warren Sandstone	-2409	-2443
Benson Sandstone	-3980	-4052

## GEOLOGY:

The mud logs depths are approximate 15' shallower than the open hole log depths. The open hole logs depths are used in this report.

I would first recommend completion of the Alexander & Benson Sandstones. The Alexander (4942 to 4952') is better developed in this well, compared with the Parr 1 V North. It has fair to good porosities and low water saturations. The mud log recorded a fair show of gas (background of 38 units to a maximum of 274 units) in this zone. The Benson development (4722 to 4728') is poorer that seen in the Parr 1 V North, with fair porosities and low water saturations. A fair show of gas (background of 38 units to a maximum of 241 units) was noted in this zone.

If a second stage is needed, I would recommend the Riley (4326 to 4346'), Balltown (3720 to 3732') and Warren (3178 to 3220'). The Riley, which is not as well developed as in the Parr 1 V North, has fair to poor porosities and low water saturations. The mud log indicated a small show of gas (background of 40 units to a maximum of 111 units). The Balltown has fair to poor porosities and low water saturations. The mud log indicated small shows of gas in this zone (background of 33 units to a maximum of 76 units). The Warren has fair to poor porosities and low water saturations. The mud log indicated very small shows of gas in this zone (background of 22 units to a maximum of 42 units).

After depletion of the lower zones, addition production may be obtained from the Bayard, Gantz and Weir. The Bayard, 2658 to 2671', has fair porosities and low water saturations. The mud log indicated a small show of gas in this zone. The Gantz, 2224 to 2230', is thin but has good to very good porosities and excellent gas effect on the neutron log. The mud log indicated a small show of gas in this zone. The lack of a significant gas show may indicate severe depletion of this zone. The Weir from 2040 to 2132' has fair to good porosities and fair gas effect on the neutron log. Several very small show of gas were noted in this zone.

OCT 24 2016

02/03/2017