



# ANTERO RESOURCES CORPORATION

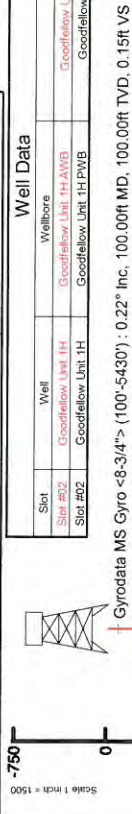
Location: Tyler County, WV  
Field: Tyler  
Facility: Weigle East Pad  
Slot: Slot #02  
Well: Goodfellow Unit 1H  
Wellbore: Goodfellow Unit 1H PWB



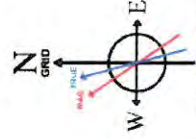
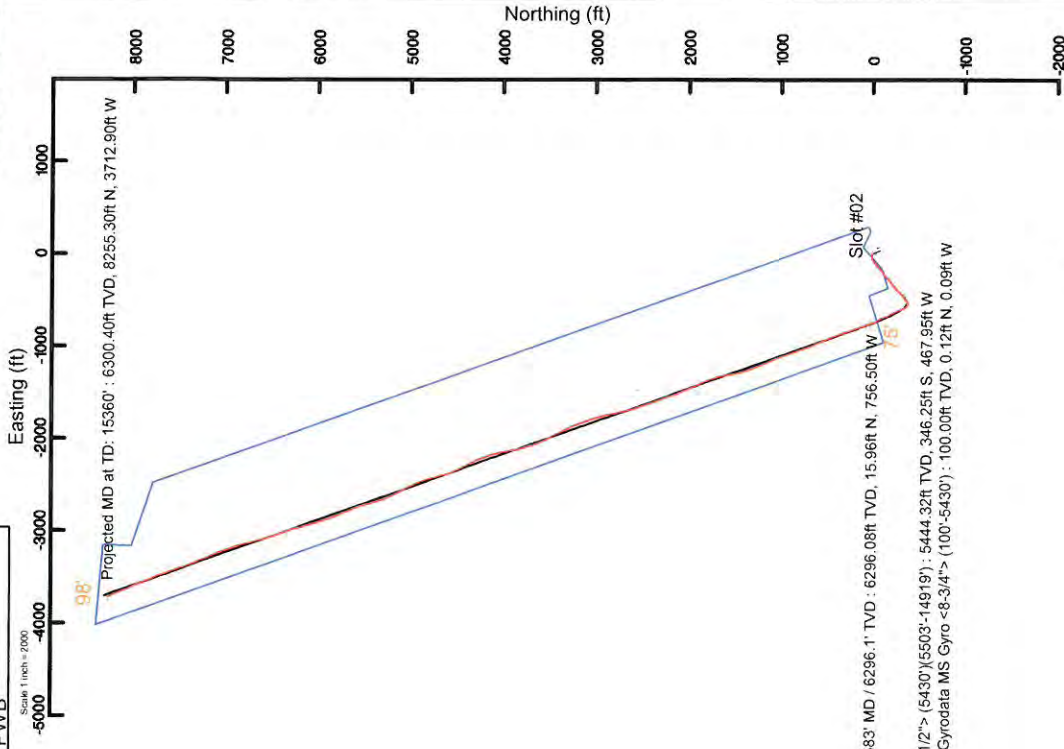
EIR reference wellbore is Goodfellow Unit 1H PWB Rev A.0	
True vertical depths are referenced to PD 525 (RKB)	
Measured depths are referenced to PD 525 (RKB)	
PD 525 (RKB) to Mean Sea Level 831 feet	
Scale: True distance	
Depths are in feet	
Created by: rehanayan on 2016-09-16	
Database: WA_MPL_EASTERN.S_Dbsh	

Location Information			
Facility Name	Grid East (US ft)	Grid North (US ft)	Longitude
Weigle East Pad	1681952.790	14331721.120	80°51'10.177"W
Slot	Local N (ft)	Grid North (US ft)	Longitude
Slot #02	37.03	1681938.420	80°51'10.360"W
Comment	Goodfellow Unit 1H		
PD 525 (RKB) to Mad line (At Slot Slot #02)	19ft		
Mean Sea Level to Mad line (At Slot Slot #02)	-812ft		
PD 525 (RKB) to Mean Sea Level	831ft		

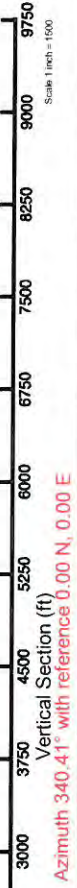
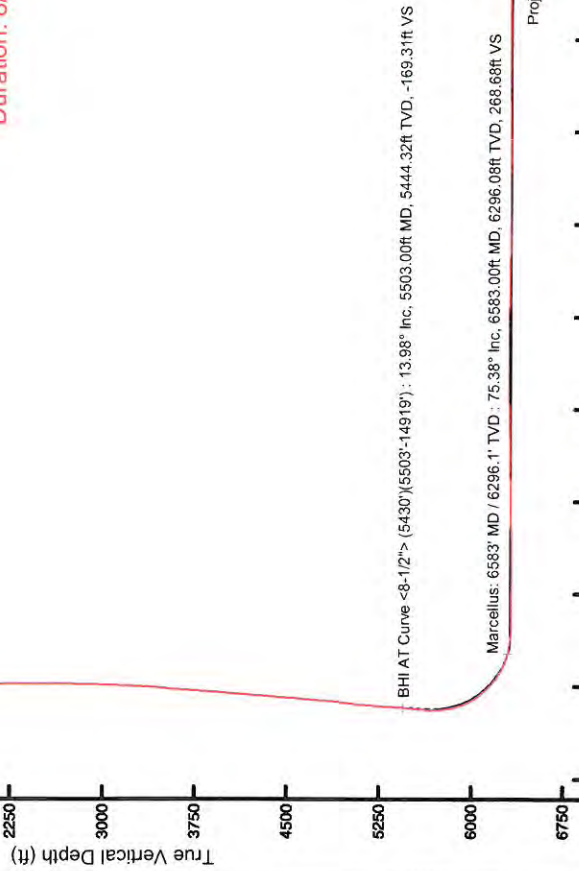
Well Data			
Slot	Well	Wellbore	Wellpath
Slot #02	Goodfellow Unit 1H	Goodfellow Unit 1H-AWB	Goodfellow Unit 1H-AWP Proj. 15360
Slot #02	Goodfellow Unit 1H	Goodfellow Unit 1H-PWB	Goodfellow Unit 1H-PWP Rev-A.0



API: 47-095-02324-0000  
BHI Job #: 8106023  
Rig: Precision 525  
Duration: 8/24/2016-8/27/2016



Users specified Dip: 66.85° Field: 52208 NT  
Magnetic North is 7.55 degrees West of True North (at 8/22/2016)  
Grid North is 0.09 degrees West of True North (at 8/22/2016)  
To correct azimuth from True to Grid subtract 0.09 degrees  
To correct azimuth from Magnetic to Grid subtract 7.64 degrees



Vertical Section (ft)  
Azimuth 340.41° with reference 0.00 N, 0.00 E



# Actual Wellpath Report

Goodfellow Unit 1H AWP Proj: 15360'

Page 1 of 9



## REFERENCE WELLPATH IDENTIFICATION

Operator	ANTERO RESOURCES CORPORATION	Slot	Slot #02
Area	Tyler County, WV	Well	Goodfellow Unit 1H
Field	Tyler	Wellbore	Goodfellow Unit 1H AWB
Facility	Weigle East Pad		

## REPORT SETUP INFORMATION

Projection System	NAD27 / UTM Zone 17 North, US feet		
North Reference	Grid	Software System	WellArchitect® 5.0
Scale	0.999602	User	Edsaryar
Convergence at slot	0.10° East	Report Generated	9/16/2016 at 2:17:19 PM
		Database/Source file	WA_MPL_EASTERNUS_Defn/Goodfellow_Unit_1H_AWP_Proj_15360_.xml

## WELLPATH LOCATION

	Local coordinates		Grid coordinates		Geographic coordinates	
	North[ft]	East[ft]	Easting[US ft]	Northing[US ft]	Latitude	Longitude
Slot Location	37.03	-14.38	1681938.42	14331758.14	39°27'58.770"N	80°51'10.360"W
Facility Reference Pt			1681952.79	14331721.12	39°27'58.404"N	80°51'10.177"W
Field Reference Pt			0.00	0.00	0°00'00.000"	85°29'19.301"W

## WELLPATH DATUM

Calculation method	Minimum curvature	PD 525 (RKB) to Facility Vertical Datum	19.00ft
Horizontal Reference Pt	Slot	PD 525 (RKB) to Mean Sea Level	831.00ft
Vertical Reference Pt	PD 525 (RKB)	PD 525 (RKB) to Mud Line at Slot (Slot #02)	19.00ft
MD Reference Pt	PD 525 (RKB)	Section Origin	N 0.00, E 0.00 ft
Field Vertical Reference	Mean Sea Level	Section Azimuth	340.41°





# Actual Wellpath Report

Goodfellow Unit 1H AWP Proj: 15360'

Page 2 of 9



## REFERENCE WELLPATH IDENTIFICATION

Operator	ANTERO RESOURCES CORPORATION	Slot	Slot #02
Area	Tyler County, WV	Well	Goodfellow Unit 1H
Field	Tyler	Wellbore	Goodfellow Unit 1H AWB
Facility	Weigle East Pad		

## WELLPATH DATA (182 stations) + = interpolated/extrapolated station

MD (ft)	Inclination (°)	Azimuth (°)	TVD (ft)	Vert Sect (ft)	North (ft)	East (ft)	Grid East (ft)	Grid North (ft)	Latitude	Longitude	Closure Dist (ft)	Closure Dir (°)	DLS (ft/100ft)	Build Rate (ft/100ft)	Turn Rate (°/100ft)	Comments
0.00	0.00	322.350	0.00	0.00	0.00	0.00	1681938.42	14331758.14	39°27'58.770"N	80°51'10.360"W	0.00	0.000	0.00	0.00	0.00	
19.00	0.00	322.350	19.00	0.00	0.00	0.00	1681938.42	14331758.14	39°27'58.770"N	80°51'10.360"W	0.00	0.000	0.00	0.00	0.00	
100.00	0.220	322.350	100.00	0.15	0.12	-0.09	1681938.33	14331758.26	39°27'58.771"N	80°51'10.361"W	0.16	322.350	0.27	0.27	-46.48	Gyrodata MS Gyro <-8-3/4"> (100'-5430')
200.00	0.120	347.640	200.00	0.43	0.38	-0.23	1681938.19	14331758.52	39°27'58.774"N	80°51'10.363"W	0.44	328.127	0.12	-0.10	25.29	
300.00	0.160	344.940	300.00	0.68	0.61	-0.29	1681938.13	14331758.75	39°27'58.776"N	80°51'10.364"W	0.68	334.481	0.04	0.04	-2.70	
400.00	0.130	351.780	400.00	0.93	0.86	-0.35	1681938.07	14331759.00	39°27'58.779"N	80°51'10.364"W	0.93	338.129	0.03	-0.03	6.84	
500.00	0.340	293.610	500.00	1.24	1.09	-0.63	1681937.79	14331759.23	39°27'58.781"N	80°51'10.368"W	1.26	329.880	0.29	0.21	-58.17	
600.00	0.590	280.020	599.99	1.70	1.30	-1.41	1681937.01	14331759.44	39°27'58.783"N	80°51'10.378"W	1.92	312.644	0.27	0.25	-13.59	
700.00	1.070	277.040	699.98	2.37	1.51	-2.85	1681935.57	14331759.64	39°27'58.785"N	80°51'10.396"W	3.22	297.869	0.48	0.48	-2.98	
800.00	2.570	284.670	799.93	4.05	2.19	-5.94	1681932.48	14331760.33	39°27'58.792"N	80°51'10.436"W	6.33	290.210	1.52	1.50	7.63	
900.00	3.100	279.590	899.81	6.63	3.21	-10.78	1681927.65	14331761.34	39°27'58.802"N	80°51'10.497"W	11.24	286.565	0.59	0.53	-5.08	
1000.00	3.300	276.910	999.65	9.24	4.00	-16.30	1681922.13	14331762.14	39°27'58.810"N	80°51'10.568"W	16.79	283.795	0.25	0.20	-2.68	
1100.00	4.220	274.510	1099.44	12.02	4.64	-22.83	1681915.60	14331762.78	39°27'58.816"N	80°51'10.651"W	23.29	281.486	0.93	0.92	-2.40	
1200.00	4.430	272.020	1199.15	14.95	5.06	-30.35	1681908.08	14331763.20	39°27'58.821"N	80°51'10.747"W	30.77	279.471	0.28	0.21	-2.49	
1300.00	4.520	265.590	1298.85	17.40	4.90	-38.14	1681900.29	14331763.03	39°27'58.819"N	80°51'10.846"W	38.46	277.316	0.51	0.09	-6.43	
1400.00	3.120	270.580	1398.62	19.37	4.62	-44.79	1681893.65	14331762.76	39°27'58.816"N	80°51'10.931"W	45.03	275.890	1.44	-1.40	4.99	
1500.00	1.430	299.340	1498.54	21.25	5.26	-48.60	1681889.84	14331763.40	39°27'58.823"N	80°51'10.980"W	48.89	276.177	1.99	-1.69	28.76	
1600.00	0.490	171.360	1598.53	21.77	5.45	-49.63	1681888.81	14331763.59	39°27'58.825"N	80°51'10.993"W	49.92	276.266	1.77	-0.94	-127.98	
1700.00	0.670	145.280	1698.53	20.79	4.55	-49.23	1681889.21	14331762.68	39°27'58.816"N	80°51'10.988"W	49.44	275.276	0.32	0.18	-26.08	
1800.00	0.730	132.760	1798.52	19.66	3.63	-48.43	1681890.01	14331761.77	39°27'58.807"N	80°51'10.977"W	48.56	274.290	0.16	0.06	-12.52	
1900.00	0.440	101.370	1898.52	18.90	3.12	-47.58	1681890.86	14331761.26	39°27'58.802"N	80°51'10.967"W	47.69	273.757	0.42	-0.29	-31.39	
2000.00	0.270	2.300	1998.51	18.92	3.28	-47.20	1681891.24	14331761.42	39°27'58.803"N	80°51'10.962"W	47.31	273.980	0.55	-0.17	-99.07	
2100.00	0.460	314.800	2098.51	19.50	3.80	-47.47	1681890.97	14331761.94	39°27'58.808"N	80°51'10.965"W	47.62	274.579	0.34	0.19	-47.50	
2200.00	0.890	257.020	2198.51	19.95	3.91	-48.51	1681889.93	14331762.05	39°27'58.809"N	80°51'10.979"W	48.67	274.609	0.75	0.43	-57.78	
2300.00	0.600	244.050	2298.50	19.98	3.51	-49.74	1681888.70	14331761.65	39°27'58.805"N	80°51'10.994"W	49.87	274.033	0.33	-0.29	-12.97	
2400.00	0.740	47.950	2398.50	20.17	3.71	-49.73	1681888.71	14331761.85	39°27'58.808"N	80°51'10.994"W	49.87	274.267	1.33	0.14	163.90	
2500.00	1.100	29.390	2498.48	21.05	4.98	-48.78	1681889.66	14331763.12	39°27'58.820"N	80°51'10.982"W	49.04	275.828	0.46	0.36	-18.56	
2600.00	1.180	254.160	2598.47	21.74	5.53	-49.30	1681889.14	14331763.67	39°27'58.826"N	80°51'10.989"W	49.61	276.405	2.11	0.08	-135.23	
2700.00	3.460	235.470	2698.39	21.03	3.54	-52.78	1681885.66	14331761.68	39°27'58.806"N	80°51'11.033"W	52.90	273.840	2.37	2.28	-18.69	
2800.00	4.630	233.710	2798.14	19.10	-0.56	-58.52	1681879.92	14331757.58	39°27'58.765"N	80°51'11.106"W	58.52	269.455	1.18	1.17	-1.76	





# Actual Wellpath Report

Goodfellow Unit 1H AWP Proj: 15360'

Page 3 of 9



## REFERENCE WELLPATH IDENTIFICATION

Operator	ANTERO RESOURCES CORPORATION	Slot	Slot #02
Area	Tyler County, WV	Well	Goodfellow Unit 1H
Field	Tyler	Wellbore	Goodfellow Unit 1H AWB
Facility	Weigle East Pad		

## WELLPATH DATA (182 stations)

MD [ft]	Inclination [°]	Azimuth [°]	TVD [ft]	Vert Sect [ft]	North [ft]	East [ft]	Grid East [US ft]	Grid North [US ft]	Latitude	Longitude	Closure Dist [ft]	Closure Dir [°]	DLS [°/100ft]	Build Rate [°/100ft]	Turn Rate [°/100ft]	Comments
2900.00	5.66	234.61	02897.73	16.59	-5.80	-65.79	1681872.65	14331752.34	89°27'58.714"N	80°51'11.199"W	66.05	264.961	1.03	1.03	0.90	
3000.00	5.48	233.98	02997.26	13.90	-11.47	-73.67	1681864.78	14331746.68	89°27'58.658"N	80°51'11.300"W	74.56	261.155	0.19	-0.18	-0.63	
3100.00	7.85	236.23	03096.58	10.88	-18.07	-83.21	1681855.24	14331740.08	89°27'58.593"N	80°51'11.421"W	85.15	257.748	2.38	2.37	2.25	
3200.00	9.70	234.99	03195.40	6.96	-26.70	-95.79	1681842.67	14331731.45	89°27'58.508"N	80°51'11.582"W	99.44	254.425	1.86	1.85	-1.24	
3300.00	11.71	232.99	03293.66	1.68	-37.64	-110.80	1681827.67	14331720.51	89°27'58.400"N	80°51'11.774"W	117.02	251.235	2.04	2.01	-2.00	
3400.00	12.84	231.21	03391.37	-5.01	-50.71	-127.56	1681810.91	14331707.45	89°27'58.271"N	80°51'11.988"W	137.27	248.319	1.19	1.13	-1.78	
3500.00	10.49	224.20	03587.18	-21.72	-78.87	-156.92	1681781.66	14331679.30	89°27'57.993"N	80°51'12.361"W	157.40	245.606	1.83	-1.04	-7.04	
3700.00	10.59	231.92	03685.50	-28.66	-91.06	-170.40	1681768.09	14331667.11	89°27'57.873"N	80°51'12.535"W	175.54	243.301	1.31	-1.31	0.03	
3800.00	11.73	234.33	03783.61	-34.39	-102.66	-185.89	1681752.60	14331655.52	89°27'57.758"N	80°51'12.732"W	193.21	241.879	1.41	0.10	7.72	
3900.00	13.19	229.28	03978.53	-47.18	-115.11	-203.74	1681734.76	14331643.08	89°27'57.636"N	80°51'12.960"W	212.36	241.090	1.23	1.14	2.41	
4100.00	11.31	224.02	04076.25	-55.65	-143.57	-237.44	1681701.08	14331629.12	89°27'57.498"N	80°51'13.193"W	234.01	240.534	1.71	1.68	1.45	
4200.00	11.43	226.80	04174.29	-63.98	-157.40	-251.48	1681687.04	14331617.63	89°27'57.355"N	80°51'13.390"W	256.78	239.823	1.51	-0.22	-6.50	
4300.00	12.45	228.23	04272.13	-72.01	-171.37	-266.74	1681671.79	14331586.84	89°27'57.218"N	80°51'13.570"W	277.47	238.840	2.18	-1.88	-5.26	
4400.00	12.35	225.69	04369.80	-80.56	-186.02	-282.43	1681656.10	14331572.20	89°27'56.936"N	80°51'13.965"W	338.19	236.630	0.55	-0.10	-2.54	
4500.00	13.97	235.93	04467.18	-88.05	-200.25	-300.09	1681638.45	14331557.97	89°27'56.796"N	80°51'14.190"W	360.77	236.284	2.83	1.62	10.24	
4600.00	13.29	231.12	04564.37	-94.86	-214.23	-319.03	1681619.51	14331543.99	89°27'56.658"N	80°51'14.432"W	384.29	236.119	1.32	-0.68	-4.81	
4700.00	12.94	227.34	04661.76	-103.05	-229.03	-336.22	1681602.34	14331529.20	89°27'56.512"N	80°51'14.652"W	406.81	235.737	0.93	-0.35	-3.78	
4800.00	15.00	237.11	04758.81	-110.41	-243.65	-355.32	1681583.24	14331514.59	89°27'56.368"N	80°51'14.896"W	430.84	235.561	3.12	2.06	9.77	
4900.00	15.25	230.20	04855.35	-117.94	-259.10	-376.29	1681562.28	14331499.14	89°27'56.215"N	80°51'15.163"W	456.87	235.450	1.82	0.25	-6.91	
5000.00	15.72	223.36	04951.73	-128.64	-277.37	-395.70	1681542.88	14331480.88	89°27'56.035"N	80°51'15.411"W	483.23	234.971	1.88	0.47	-6.84	
5100.00	12.73	217.53	05048.66	-140.79	-295.96	-411.72	1681526.87	14331462.30	89°27'55.852"N	80°51'15.616"W	507.05	234.290	3.31	-2.99	-5.83	
5200.00	10.36	219.04	05146.63	-151.45	-311.68	-424.09	1681514.49	14331446.58	89°27'55.696"N	80°51'15.774"W	526.31	233.686	2.39	-2.37	1.51	
5300.00	9.18	211.29	05245.19	-158.74	-323.66	-435.98	1681502.61	14331434.61	89°27'55.578"N	80°51'15.926"W	542.99	233.411	2.38	-1.18	12.25	
5400.00	10.95	237.08	05343.65	-163.55	-333.81	-450.18	1681488.42	14331424.46	89°27'55.478"N	80°51'16.107"W	560.44	233.443	2.04	1.77	5.79	
5430.00	11.23	235.55	05373.09	-164.95	-337.01	-454.98	1681483.62	14331421.26	89°27'55.447"N	80°51'16.168"W	566.20	233.472	1.35	0.93	-5.10	
5503.00	13.98	233.69	05444.32	-169.31	-346.25	-467.95	1681470.65	14331412.02	89°27'55.355"N	80°51'16.334"W	582.13	233.501	3.81	3.77	-2.55	BHI AT Curve <8-1/2'> (5430)-(5503-14919)
5592.00	15.11	229.68	05530.47	-176.51	-360.13	-485.46	1681453.15	14331398.16	89°27'55.219"N	80°51'16.557"W	604.45	233.431	1.70	1.27	-4.51	
5582.00	14.49	232.13	05617.48	-184.20	-374.63	-503.29	1681435.33	14331383.66	89°27'55.075"N	80°51'16.785"W	627.42	233.338	0.98	-0.69	2.72	





# Actual Wellpath Report

Goodfellow Unit 1H AWP Proj: 15360'

Page 4 of 9



## REFERENCE WELLPATH IDENTIFICATION

Operator	ANTERO RESOURCES CORPORATION	Slot #02
Area	Tyler County, WV	Goodfellow Unit 1H
Field	Tyler	Goodfellow Unit 1H AWB
Facility	Weigle East Pad	

MD (ft)	Inclination (°)	Azimuth (°)	TVD (ft)	Vert Sect (ft)	North (ft)	East (ft)	Grid East (ft)	Grid North (ft)	Latitude	Longitude	Closure Dist (ft)	Dir (°)	DLS (ft/100ft)	Build Rate (ft/100ft)	Turn Rate (°/100ft)	Comments
5728.00	14.130	239.890	5662.06	-187.03	-380.98	-512.70	1681425.93	14331377.31	39°27'55.013"N	80°51'16.905"W	638.75	233.384	4.24	-0.78	16.87	
5770.00	13.910	254.170	5702.82	-187.63	-384.93	-521.99	1681416.64	14331373.36	39°27'54.974"N	80°51'17.024"W	648.57	233.594	8.23	-0.52	34.00	
5817.00	14.080	268.370	5748.44	-185.50	-386.63	-533.14	1681405.49	14331371.66	39°27'54.957"N	80°51'17.166"W	658.58	234.050	7.30	0.36	30.21	
5860.00	14.490	279.080	5790.12	-181.30	-385.93	-543.69	1681394.95	14331372.36	39°27'54.964"N	80°51'17.300"W	666.74	234.631	6.21	0.95	24.91	
5905.00	14.970	293.610	5833.65	-174.62	-382.72	-554.57	1681384.07	14331375.58	39°27'54.996"N	80°51'17.439"W	673.81	235.390	8.26	1.07	32.29	
5950.00	17.290	306.840	5876.89	-165.07	-376.38	-565.26	1681373.39	14331381.91	39°27'55.059"W	80°51'17.575"W	679.10	236.342	9.63	5.16	29.40	
5994.00	20.980	319.210	5918.47	-152.27	-366.48	-575.64	1681363.01	14331391.80	39°27'55.157"N	80°51'17.707"W	682.40	237.517	12.42	8.39	28.11	
6039.00	25.230	327.700	5959.87	-135.39	-352.27	-586.04	1681352.62	14331406.01	39°27'55.298"N	80°51'17.840"W	683.76	238.990	11.98	9.44	18.87	
6041.00†	25.438	327.983	5961.67	-134.55	-351.54	-586.49	1681352.16	14331406.74	39°27'55.305"N	80°51'17.845"W	683.48	239.062	12.01	10.38	14.15	Sycamore: 6041' MD / 5961.7' TVD
6084.00	30.010	333.170	5999.73	-114.85	-334.11	-596.25	1681342.41	14331424.17	39°27'55.477"N	80°51'17.969"W	683.78	240.736	12.01	10.63	12.06	
6129.00	34.010	336.260	6037.89	-91.12	-312.53	-606.40	1681332.26	14331445.73	39°27'55.691"N	80°51'18.098"W	682.20	242.734	9.60	8.89	6.87	
6174.00	38.350	339.690	6074.20	-64.60	-287.91	-616.32	1681322.35	14331470.35	39°27'55.934"N	80°51'18.224"W	680.25	244.961	10.64	9.64	7.62	
6219.00	41.680	335.630	6108.67	-35.72	-261.17	-627.34	1681311.33	14331497.07	39°27'56.199"N	80°51'18.364"W	679.54	247.397	9.40	7.40	-9.02	
6256.00†	45.313	334.271	6135.51	-10.37	-238.11	-638.13	1681300.54	14331520.12	39°27'56.427"N	80°51'18.501"W	681.11	249.538	10.14	9.82	-3.67	Middlesex: 6256' MD / 6135.5' TVD
6284.00	46.100	334.000	6141.09	-4.68	-232.96	-640.63	1681298.05	14331525.27	39°27'56.478"N	80°51'18.533"W	681.67	250.017	10.14	9.84	-3.39	
6308.00	49.930	334.040	6170.52	27.82	-203.56	-654.95	1681283.73	14331554.66	39°27'56.769"N	80°51'18.715"W	685.86	252.735	8.70	8.70	0.09	
6355.00	53.700	334.260	6199.57	64.54	-170.30	-671.02	1681267.67	14331587.91	39°27'57.098"N	80°51'18.919"W	692.29	255.759	8.04	8.02	0.74	
6398.00	57.420	335.260	6223.88	99.83	-138.21	-686.10	1681252.60	14331619.98	39°27'57.415"N	80°51'19.111"W	699.88	258.610	8.81	8.65	2.02	
6407.00†	58.404	335.180	6228.67	107.42	-131.29	-689.29	1681249.40	14331626.90	39°27'57.483"N	80°51'19.152"W	701.68	259.216	10.96	10.93	-0.88	Burkett: 6407' MD / 6228.7' TVD
6444.00	62.450	334.870	6246.92	139.45	-102.12	-702.88	1681235.82	14331656.06	39°27'57.772"N	80°51'19.324"W	710.26	261.733	10.96	10.94	-0.84	
6461.00†	64.205	334.951	6254.55	154.57	-88.37	-709.32	1681229.38	14331669.81	39°27'57.908"N	80°51'19.406"W	714.80	262.899	10.33	10.33	0.48	Tully: 6461' MD / 6254.6' TVD
6487.00	66.890	335.070	6265.51	178.13	-66.92	-719.32	1681219.39	14331691.25	39°27'58.120"N	80°51'19.533"W	722.42	264.685	10.33	10.33	0.46	
6535.00	71.430	335.490	6282.39	222.80	-26.18	-738.07	1681200.65	14331731.97	39°27'58.523"N	80°51'19.771"W	738.53	267.969	9.49	9.46	0.87	
6577.00	74.910	337.010	6294.55	262.89	10.61	-754.25	1681184.47	14331768.75	39°27'58.887"N	80°51'19.977"W	754.33	270.806	8.98	8.29	3.62	
6583.00†	75.379	337.368	6296.08	268.68	15.96	-756.50	1681182.22	14331774.09	39°27'58.940"N	80°51'20.006"W	756.67	271.209	9.71	7.82	5.97	Marcellus: 6583' MD / 6296.1' TVD
6622.00	78.440	339.660	6304.92	306.64	51.30	-770.41	1681168.32	14331809.42	39°27'59.289"N	80°51'20.182"W	772.11	273.810	9.71	7.85	5.88	
6667.00	83.210	342.100	6312.09	331.05	93.26	-784.95	1681153.79	14331851.36	39°27'59.704"N	80°51'20.367"W	790.47	276.776	11.87	10.60	5.42	
6712.00	83.500	342.380	6317.30	395.72	135.83	-798.58	1681140.16	14331893.91	39°28'00.125"N	80°51'20.540"W	810.05	279.653	0.89	0.64	0.62	
6756.00	87.780	341.650	6320.64	439.57	177.55	-812.12	1681126.62	14331935.62	39°28'00.538"N	80°51'20.711"W	831.31	282.332	9.87	9.73	-1.66	
6802.00	89.940	341.860	6321.56	485.54	221.22	-826.52	1681112.23	14331979.27	39°28'00.970"N	80°51'20.894"W	855.62	284.984	4.72	4.70	0.46	





# Actual Wellpath Report

Goodfellow Unit 1H AWP Proj: 15360'

Page 5 of 9



## REFERENCE WELLPATH IDENTIFICATION

Operator	ANTERO RESOURCES CORPORATION	Slot	Slot #02
Area	Tyler County, WV	Well	Goodfellow Unit 1H
Field	Tyler	Wellbore	Goodfellow Unit 1H AWB
Facility	Weigle East Pad		

## WELLPATH DATA (182 stations)

MD [ft]	Inclination [°]	Azimuth [°]	TVD [ft]	Vert Sect [ft]	North [ft]	East [ft]	Grid East [US ft]	Grid North [US ft]	Latitude	Longitude	Closure Dist [ft]	Closure Dir [°]	DLS ["/100ft]	Build Rate ["/100ft]	Turn Rate ["/100ft]	Comments
6846.00	89.910	340.670	6321.62	529.53	262.89	-840.65	1681098.10	14332020.93	39°28'01.382"N	80°51'21.074"W	880.80	287.366	2.71	-0.07	-2.70	
6937.00	90.030	339.370	6321.66	620.53	348.41	-871.75	1681067.02	14332106.41	39°28'02.227"N	80°51'21.468"W	938.79	291.785	1.43	0.13	-1.43	
7026.00	89.880	339.530	6321.73	709.52	431.75	-902.99	1681035.79	14332189.72	39°28'03.052"N	80°51'21.865"W	1000.90	295.554	0.25	-0.17	0.18	
7116.00	89.880	337.340	6321.92	799.46	515.44	-936.07	1681002.73	14332273.38	39°28'03.879"N	80°51'22.285"W	1068.60	298.839	2.43	0.00	-2.43	
7206.00	89.850	337.430	6322.13	889.33	598.52	-970.68	1680968.13	14332356.42	39°28'04.701"N	80°51'22.725"W	1140.37	301.658	0.11	-0.03	0.10	
7295.00	90.000	337.900	6322.25	978.23	680.85	-1004.50	1680934.32	14332438.71	39°28'05.515"N	80°51'23.154"W	1213.49	304.129	0.55	0.17	0.53	
7385.00	89.970	340.240	6322.27	1068.20	764.90	-1036.65	1680902.19	14332522.74	39°28'06.346"N	80°51'23.562"W	1288.30	306.422	2.60	-0.03	2.60	
7474.00	90.370	340.730	6322.01	1157.20	848.79	-1066.38	1680872.47	14332606.59	39°28'07.176"N	80°51'23.940"W	1362.94	308.518	0.71	0.45	0.55	
7564.00	92.060	343.140	6320.10	1247.14	934.32	-1094.28	1680844.58	14332692.09	39°28'08.022"N	80°51'24.294"W	1438.89	310.492	3.27	1.88	2.68	
7654.00	90.370	339.810	6318.19	1337.09	1019.62	-1122.86	1680816.01	14332777.36	39°28'08.865"N	80°51'24.656"W	1516.72	312.241	4.15	-1.88	-3.70	
7743.00	90.370	334.440	6317.62	1425.90	1101.59	-1157.44	1680781.44	14332859.29	39°28'09.676"N	80°51'25.096"W	1597.87	313.584	6.03	0.00	-6.03	
7833.00	92.060	338.250	6315.71	1515.64	1183.99	-1193.54	1680745.36	14332941.66	39°28'10.491"N	80°51'25.554"W	1681.18	314.770	4.63	1.88	4.23	
7923.00	89.910	338.380	6314.16	1605.56	1267.61	-1226.79	1680712.12	14333025.24	39°28'11.318"N	80°51'25.977"W	1764.04	315.938	2.39	-2.39	0.14	
8012.00	90.770	341.470	6313.63	1694.54	1351.19	-1257.33	1680681.59	14333108.79	39°28'12.144"N	80°51'26.364"W	1845.70	317.061	3.60	0.97	3.47	
8102.00	90.180	344.300	6312.89	1784.45	1437.19	-1283.81	1680655.12	14333194.76	39°28'12.995"N	80°51'26.700"W	1927.09	318.226	3.21	-0.66	3.14	
8192.00	91.380	349.860	6311.66	1873.79	1524.87	-1303.93	1680635.01	14333282.40	39°28'13.862"N	80°51'26.955"W	2006.35	319.466	6.32	1.33	6.18	
8281.00	91.110	348.280	6309.73	1961.75	1612.23	-1320.80	1680618.15	14333369.73	39°28'14.725"N	80°51'27.168"W	2084.18	320.674	1.80	-0.30	-1.78	
8371.00	91.350	343.550	6307.79	2051.29	1699.48	-1342.69	1680596.27	14333456.94	39°28'15.588"N	80°51'27.446"W	2165.88	321.689	5.26	0.27	-5.26	
8461.00	90.950	338.430	6305.99	2141.24	1784.53	-1371.99	1680566.98	14333541.95	39°28'16.429"N	80°51'27.818"W	2250.97	322.446	5.71	-0.44	-5.69	
8550.00	90.770	336.410	6304.65	2230.10	1866.69	-1406.16	1680532.82	14333624.08	39°28'17.242"N	80°51'28.252"W	2337.05	323.010	2.28	-0.20	-2.27	
8640.00	91.140	336.690	6303.15	2319.89	1949.24	-1441.97	1680497.03	14333706.60	39°28'18.058"N	80°51'28.707"W	2424.63	323.508	0.52	0.41	0.31	
8730.00	90.920	337.020	6301.53	2409.70	2031.99	-1477.34	1680461.67	14333789.31	39°28'18.876"N	80°51'29.156"W	2512.27	323.981	0.44	-0.24	0.37	
8819.00	90.340	338.410	6300.55	2498.59	2114.33	-1511.08	1680427.94	14333871.63	39°28'19.691"N	80°51'29.595"W	2598.80	324.447	1.69	-0.65	1.56	
8909.00	90.310	338.740	6300.04	2588.55	2198.11	-1543.96	1680395.08	14333955.37	39°28'20.519"N	80°51'30.002"W	2686.17	324.916	0.37	-0.03	0.37	
8999.00	90.400	341.190	6299.49	2678.53	2282.66	-1574.79	1680364.26	14334039.88	39°28'21.355"N	80°51'30.394"W	2773.17	325.398	2.72	0.10	2.72	
9088.00	89.750	341.230	6299.37	2767.52	2366.91	-1603.46	1680335.60	14334124.11	39°28'22.189"N	80°51'30.758"W	2858.91	325.884	0.73	-0.73	0.04	
9178.00	90.200	340.460	6299.39	2857.52	2451.93	-1632.99	1680306.09	14334209.09	39°28'23.029"N	80°51'31.133"W	2945.95	326.336	1.00	0.52	-0.86	
9267.00	88.830	341.930	6300.13	2946.51	2536.17	-1661.67	1680277.41	14334293.30	39°28'23.862"N	80°51'31.497"W	3032.05	326.768	2.27	-1.56	1.65	
9357.00	88.340	343.970	6302.35	3036.38	2622.18	-1688.05	1680251.04	14334379.28	39°28'24.713"N	80°51'31.831"W	3118.55	327.228	2.33	-0.54	2.27	
9447.00	88.180	344.880	6305.09	3126.12	2708.84	-1712.21	1680226.90	14334465.90	39°28'25.570"N	80°51'32.138"W	3204.60	327.704	1.03	-0.18	1.01	





# Actual Wellpath Report

Goodfellow Unit 1H AWP Proj: 15360'

Page 6 of 9



## REFERENCE WELLPATH IDENTIFICATION

Operator	ANTERO RESOURCES CORPORATION	Slot	Slot #02
Area	Tyler County, WV	Well	Goodfellow Unit 1H
Field	Tyler	Wellbore	Goodfellow Unit 1H AWB
Facility	Weigle East Pad		

## WELLPATH DATA (182 stations)

MD	Inclination	Azimuth	TVD	Vert Sect	North	East	Grid East	Grid North	Latitude	Longitude	Closure Dist	Closure Dir	DLS	Build Rate	Turn Rate	Comments
	°	°	(ft)	(ft)	(ft)	(ft)	(US ft)	(US ft)			(ft)	°	("/100ft)	("/100ft)	("/100ft)	
9536.00	89.570	348.860	6306.83	3214.52	2795.48	-1732.42	1680206.70	14334562.50	39°28'26.426"N	80°51'32.394"W	3288.76	328.213	4.74	1.56	4.47	
9626.00	89.570	349.050	6307.51	3303.52	2883.81	-1749.66	1680189.46	14334640.79	39°28'27.299"N	80°51'32.612"W	3373.08	328.754	0.21	0.00	0.21	
9716.00	89.660	342.490	6308.11	3393.07	2971.00	-1771.77	1680167.36	14334727.95	39°28'28.162"N	80°51'32.892"W	3459.19	329.190	7.29	0.10	-7.29	
9806.00	89.450	339.910	6308.81	3483.05	3056.18	-1800.77	1680138.37	14334813.10	39°28'29.004"N	80°51'33.260"W	3547.26	329.493	2.88	-0.23	-2.87	
9895.00	90.150	341.010	6309.12	3572.05	3140.06	-1830.53	1680108.62	14334896.94	39°28'29.833"N	80°51'33.638"W	3634.67	329.759	1.46	0.79	1.24	
9985.00	89.970	338.010	6309.03	3662.03	3224.35	-1862.04	1680077.13	14334981.20	39°28'30.667"N	80°51'34.016"W	3723.39	329.994	3.34	-0.20	-3.33	
10075.00	90.030	333.580	6309.03	3751.72	3306.42	-1898.93	1680040.25	14335063.24	39°28'31.479"N	80°51'34.507"W	3812.92	330.131	4.92	0.07	-4.92	
10165.00	89.850	332.020	6309.12	3840.92	3386.46	-1940.06	1679999.13	14335143.25	39°28'32.270"N	80°51'35.030"W	3902.82	330.192	1.74	-0.20	-1.73	
10254.00	89.750	332.960	6309.44	3929.07	3465.40	-1981.17	1679958.04	14335222.15	39°28'33.051"N	80°51'35.552"W	3991.75	330.243	1.06	-0.11	1.05	
10344.00	89.880	335.070	6309.73	4018.50	3546.30	-2020.60	1679918.63	14335303.02	39°28'33.851"N	80°51'36.064"W	4081.55	330.326	2.35	0.14	2.34	
10434.00	90.090	340.720	6309.75	4108.38	3629.65	-2054.46	1679884.79	14335386.34	39°28'34.676"N	80°51'36.484"W	4170.75	330.489	6.28	0.23	6.28	
10523.00	90.120	342.980	6309.59	4197.35	3714.21	-2082.18	1679857.08	14335470.87	39°28'35.512"N	80°51'36.836"W	4258.03	330.725	2.54	0.03	2.54	
10613.00	90.090	343.860	6309.42	4287.22	3800.47	-2107.86	1679831.40	14335557.09	39°28'36.365"N	80°51'37.161"W	4345.88	330.986	0.98	-0.03	0.98	
10703.00	89.910	349.380	6309.42	4376.66	3887.99	-2128.68	1679810.59	14335644.58	39°28'37.230"N	80°51'37.425"W	4432.58	331.299	6.14	-0.20	6.13	
10792.00	90.120	350.120	6309.40	4464.48	3975.57	-2144.51	1679794.76	14335732.12	39°28'38.096"N	80°51'37.625"W	4517.09	331.657	0.86	0.24	0.83	
10882.00	90.150	346.810	6309.19	4553.58	4063.74	-2162.51	1679776.78	14335820.26	39°28'38.968"N	80°51'37.853"W	4603.31	331.980	3.68	0.03	-3.68	
10972.00	90.030	341.430	6309.04	4643.36	4150.28	-2187.13	1679752.17	14335906.76	39°28'39.823"N	80°51'38.165"W	4691.30	332.212	5.98	-0.13	-5.98	
11062.00	90.180	338.170	6308.88	4733.34	4234.73	-2218.20	1679721.11	14335991.17	39°28'40.658"N	80°51'38.560"W	4780.52	332.354	3.63	0.17	-3.62	
11151.00	90.220	333.380	6308.57	4822.02	4315.87	-2254.71	1679684.62	14336072.28	39°28'41.461"N	80°51'39.024"W	4869.33	332.416	5.38	0.04	-5.38	
11241.00	90.280	332.280	6308.18	4911.23	4395.93	-2295.80	1679643.54	14336152.32	39°28'42.253"N	80°51'39.546"W	4959.33	332.424	1.22	0.07	-1.22	
11331.00	90.150	335.760	6307.84	5000.66	4476.83	-2335.22	1679604.13	14336233.18	39°28'43.053"N	80°51'40.048"W	5049.28	332.452	3.87	-0.14	3.87	
11421.00	90.180	339.970	6307.58	5090.55	4560.55	-2369.12	1679570.24	14336316.49	39°28'43.877"N	80°51'40.478"W	5138.87	332.547	4.68	0.03	4.68	
11510.00	90.120	343.010	6307.35	5179.52	4644.56	-2397.38	1679542.00	14336400.84	39°28'44.712"N	80°51'40.837"W	5226.79	332.699	3.42	-0.07	3.42	
11600.00	90.250	344.750	6307.06	5269.35	4731.02	-2422.36	1679517.03	14336487.26	39°28'45.566"N	80°51'41.154"W	5315.11	332.887	1.94	0.14	1.93	
11690.00	90.150	342.630	6306.74	5359.20	4817.39	-2447.64	1679491.76	14336573.60	39°28'46.421"N	80°51'41.474"W	5403.53	333.066	2.36	-0.11	-2.36	
11779.00	90.150	337.220	6306.51	5448.16	4900.95	-2478.17	1679461.24	14336657.13	39°28'47.247"N	80°51'41.862"W	5491.87	333.176	6.08	0.00	-6.08	
11869.00	90.250	334.900	6306.19	5537.90	4983.20	-2514.69	1679424.73	14336739.35	39°28'48.060"N	80°51'42.326"W	5581.75	333.223	2.58	0.11	-2.58	
11959.00	90.120	333.020	6305.90	5627.32	5064.06	-2554.20	1679385.24	14336820.18	39°28'48.860"N	80°51'42.829"W	5671.74	333.235	2.09	-0.14	-2.09	
12048.00	90.120	334.120	6305.72	5715.69	5143.76	-2593.81	1679345.64	14336899.84	39°28'49.648"N	80°51'43.332"W	5760.74	333.240	1.24	0.00	1.24	
12138.00	89.540	335.110	6305.98	5805.23	5225.07	-2632.40	1679307.08	14336981.12	39°28'50.453"N	80°51'43.823"W	5850.71	333.261	1.27	-0.64	1.10	





# Actual Wellpath Report

Goodfellow Unit 1H AWP Proj: 15360'

Page 7 of 9



**REFERENCE WELLPATH IDENTIFICATION**

Operator	Slot	Slot #02
ANTERO RESOURCES CORPORATION	Well	Goodfellow Unit 1H
Area Tyler County, WV	Wellbore	Goodfellow Unit 1H AWB
Field Tyler		
Facility Weigle East Pad		

**WELLPATH DATA (182 stations)**

MD (ft)	Inclination (°)	Azimuth (°)	TVD (ft)	Vert Sect (ft)	North (ft)	East (ft)	Grid East (US ft)	Grid North (US ft)	Latitude	Longitude	Closure Dist (ft)	Closure Dir (°)	DLS (°/100ft)	Build Rate (°/100ft)	Turn Rate (°/100ft)	Comments
12228.00	90.150	340.550	6306.23	5895.10	5308.38	-2666.34	1679273.14	14337064.40	39°28'51.277"N	80°51'44.254"W	5940.40	333.330	6.08	0.68	6.04	
12317.00	90.180	345.130	6305.97	5984.00	5393.40	-2692.60	1679246.90	14337149.38	39°28'52.117"N	80°51'44.587"W	6028.17	333.470	5.15	0.03	5.15	
12407.00	90.310	344.410	6305.69	6073.74	5480.23	-2716.24	1679223.27	14337236.18	39°28'52.976"N	80°51'44.887"W	6116.45	333.635	0.81	0.14	-0.80	
12497.00	90.220	339.860	6305.17	6163.67	5565.87	-2743.84	1679195.68	14337321.78	39°28'53.823"N	80°51'45.237"W	6205.45	333.758	5.06	-0.10	-5.06	
12587.00	90.120	336.450	6304.90	6253.59	5649.40	-2777.32	1679162.21	14337405.28	39°28'54.649"N	80°51'45.663"W	6295.17	333.821	3.79	-0.11	-3.79	
12676.00	90.090	336.630	6304.74	6342.38	5731.04	-2812.76	1679126.79	14337486.89	39°28'55.456"N	80°51'46.113"W	6384.07	333.859	0.21	-0.03	0.20	
12766.00	90.370	337.350	6304.38	6432.22	5813.88	-2847.94	1679091.62	14337569.69	39°28'56.275"N	80°51'46.560"W	6473.94	333.902	0.86	0.31	0.80	
12856.00	90.220	342.080	6303.91	6522.19	5898.27	-2878.13	1679060.44	14337654.05	39°28'57.110"N	80°51'46.956"W	6563.46	333.982	5.26	-0.17	5.26	
12945.00	90.120	344.130	6303.66	6611.09	5983.42	-2904.99	1679034.59	14337739.17	39°28'57.952"N	80°51'47.285"W	6651.34	334.103	2.31	-0.11	2.30	
13035.00	90.090	344.140	6303.49	6700.90	6070.00	-2929.60	1679010.00	14337825.10	39°28'58.808"N	80°51'47.597"W	6739.98	334.236	0.04	-0.03	0.01	
13125.00	90.030	344.110	6303.39	6790.71	6156.56	-2954.21	1678985.39	14337912.24	39°28'59.664"N	80°51'47.909"W	6828.66	334.366	0.07	-0.07	-0.03	
13214.00	90.280	344.490	6303.15	6879.50	6242.24	-2978.30	1678961.31	14337997.88	39°29'00.511"N	80°51'48.214"W	6916.35	334.493	0.51	0.28	0.43	
13304.00	90.340	342.240	6302.66	6969.37	6328.47	-3004.06	1678935.56	14338084.08	39°29'01.363"N	80°51'48.541"W	7005.28	334.607	2.50	0.07	-2.50	
13394.00	90.310	337.890	6302.15	7059.35	6413.05	-3034.74	1678910.40	14338168.63	39°29'02.200"N	80°51'48.931"W	7094.85	334.676	4.83	-0.03	4.83	
13484.00	90.220	340.780	6301.74	7149.32	6497.25	-3066.50	1678887.15	14338252.79	39°29'03.033"N	80°51'49.334"W	7184.55	334.734	3.21	-0.10	3.21	
13573.00	90.180	344.710	6301.43	7238.23	6582.23	-3092.89	1678864.77	14338337.74	39°29'03.873"N	80°51'49.669"W	7272.67	334.832	4.42	-0.04	4.42	
13663.00	90.280	345.540	6301.14	7327.92	6669.21	-3115.99	1678842.67	14338424.69	39°29'04.733"N	80°51'49.962"W	7361.24	334.957	0.92	0.00	0.92	
13753.00	90.280	345.860	6300.78	7417.54	6756.42	-3138.22	1678801.45	14338511.86	39°29'05.595"N	80°51'50.244"W	7449.68	335.086	0.37	0.11	0.36	
13842.00	90.180	344.570	6300.42	7506.23	6842.47	-3160.93	1678778.75	14338597.88	39°29'06.446"N	80°51'50.532"W	7537.30	335.205	1.45	-0.11	-1.45	
13932.00	90.370	343.190	6299.99	7596.06	6928.93	-3185.92	1678753.77	14338684.30	39°29'07.301"N	80°51'50.849"W	7626.28	335.307	1.55	0.21	-1.53	
14022.00	90.120	339.560	6299.61	7686.03	7014.20	-3214.66	1678725.05	14338769.54	39°29'08.144"N	80°51'51.214"W	7715.77	335.378	4.04	-0.28	-4.03	
14112.00	90.250	334.620	6299.32	7775.85	7097.08	-3249.69	1678690.02	14338852.38	39°29'08.964"N	80°51'51.659"W	7805.70	335.397	5.49	0.14	-5.49	
14201.00	90.220	336.060	6298.95	7864.50	7177.96	-3286.82	1678652.92	14338933.23	39°29'09.764"N	80°51'52.131"W	7894.70	335.397	1.62	-0.03	1.62	
14291.00	90.250	337.950	6298.58	7954.32	7260.68	-3322.26	1678617.49	14339015.92	39°29'10.582"N	80°51'52.582"W	7984.67	335.413	1.66	0.03	1.66	
14381.00	89.750	338.200	6298.58	8044.23	7344.23	-3356.16	1678583.60	14339099.26	39°29'11.406"N	80°51'53.012"W	8074.59	335.440	0.91	-0.56	0.72	
14470.00	89.820	340.140	6298.92	8133.20	7427.23	-3387.81	1678551.97	14339182.40	39°29'12.229"N	80°51'53.415"W	8163.39	335.481	2.18	0.08	2.18	
14560.00	89.910	342.970	6299.13	8223.17	7512.60	-3416.28	1678523.17	14339267.73	39°29'13.073"N	80°51'53.776"W	8252.89	335.547	3.15	0.10	3.14	
14650.00	89.940	340.390	6299.25	8313.14	7598.03	-3444.57	1678495.23	14339353.13	39°29'13.918"N	80°51'54.135"W	8342.37	335.613	2.87	0.03	-2.87	
14739.00	89.940	338.920	6299.34	8402.13	7681.48	-3475.51	1678464.30	14339436.54	39°29'14.743"N	80°51'54.528"W	8431.15	335.655	1.65	0.00	-1.65	
14829.00	90.000	336.800	6299.39	8492.04	7764.84	-3509.42	1678430.40	14339519.87	39°29'15.567"N	80°51'54.959"W	8521.08	335.679	2.36	0.07	-2.36	





# Actual Wellpath Report

Goodfellow Unit 1H AWP Proj: 15360'

Page 8 of 9



### REFERENCE WELLPATH IDENTIFICATION

Operator	ANTERO RESOURCES CORPORATION	Slot	Slot #02
Area	Tyler County, WV	Well	Goodfellow Unit 1H
Field	Tyler	Wellbore	Goodfellow Unit 1H AWB
Facility	Weigle East Pad		

### WELLPATH DATA (182 stations)

MD [ft]	Inclination [°]	Azimuth [°]	TVD [ft]	Vert Sect [ft]	North [ft]	East [ft]	Grid North [US ft]	Grid East [US ft]	Longitude [US ft]	Latitude [US ft]	Closure Dist [ft]	Closure Dir [°]	DLS [°/100ft]	Build Rate [°/100ft]	Turn Rate [°/100ft]	Comments
14919.00	89.880	337.530	6299.48	8581.90	7847.78	-3544.35	1678395.49	14339602.78	39°29'16.387"N	80°51'55.403"W	8611.04	335.694	0.82	-0.13	0.81	
15360.00	89.880	337.530	6300.40	9022.34	8255.30	-3712.90	1678227.00	14340010.14	39°29'20.418"N	80°51'57.545"W	9051.83	335.784	0.00	0.00	0.00	Projected MD at TD: 15360'

### TARGETS

Name	TVD [ft]	North [ft]	East [ft]	Grid East [US ft]	Grid North [US ft]	Latitude	Longitude	Shape
Goodfellow Unit 1H POE Rev-1	6291.00	-6.57	-749.83	1681188.89	14331751.57	39°27'58.717"N	80°51'19.921"W	point
Goodfellow Unit 1H BHL Rev-2	6318.00	8289.21	-3701.59	1678238.32	14340044.04	39°29'20.753"N	80°51'57.400"W	point
Goodfellow Unit 1H LP Rev-1	6318.00	142.55	-802.90	1681135.85	14331900.63	39°28'00.192"N	80°51'20.594"W	point

### WELLPATH COMPOSITION - Ref Wellbore: Goodfellow Unit 1H AWB Ref Wellpath: Goodfellow Unit 1H AWP Proj: 15360'

Start MD [ft]	End MD [ft]	Positional Uncertainty Model	Log Name/Comment	Wellbore
19.00	5430.00	Gyrodata standard - Drop gyro or Multi-shot	01. Gyrodata MS Gyro <8-3'4">(100' - 5430')	Goodfellow Unit 1H AWB
5430.00	14919.00	BHI AutoTrak Curve (Short)	02. BHI AT Curve <8-1'2">(5430') (5503'-14919')	Goodfellow Unit 1H AWB
14919.00	15360.00	Blind Drilling (std)	Projection to bit	Goodfellow Unit 1H AWB





# Actual Wellpath Report

Goodfellow Unit 1H AWP Proj: 15360'

Page 9 of 9



REFERENCE WELLPATH IDENTIFICATION			
Operator	ANTERO RESOURCES CORPORATION	Slot	Slot #02
Area	Tyler County, WV	Well	Goodfellow Unit 1H
Field	Tyler	Wellbore	Goodfellow Unit 1H AWB
Facility	Weigle East Pad		

**COMMENTS**

Wellpath general comments  
 API: 47-095-02324-0000  
 BHI Job #: 8106023  
 Rig: Precision 525  
 Duration: 8/24/2016-8/27/2016  
 Gyrodatta MS Gyro <8-3/4"> (100'-5430')  
 BHI AT Curve <8-1/2"> (5430')(5503'-14919')  
 Sycamore: 6041' MD  
 Middlesex: 6256' MD  
 Burkett: 6407' MD  
 Tully: 6461' MD  
 Marcellus POE: 6583' MD  
 Projected MD at TD: 15360'