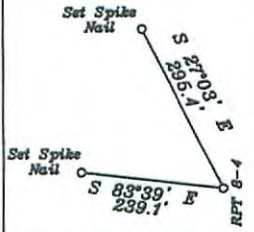


Top Hole 10,158'
Bottom Hole 11,961'

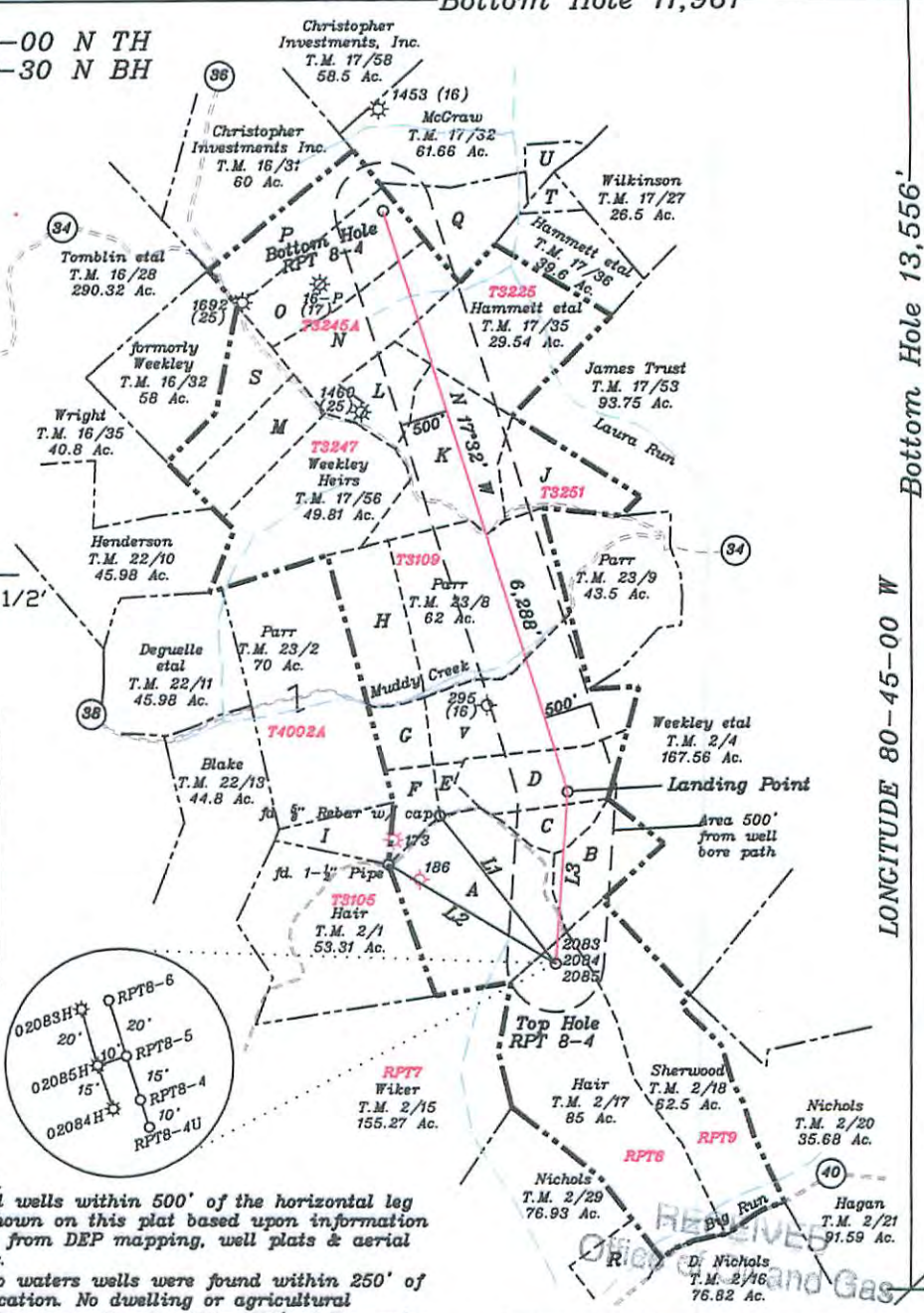
LATITUDE 39-30-00 N TH
LATITUDE 39-32-30 N BH

References



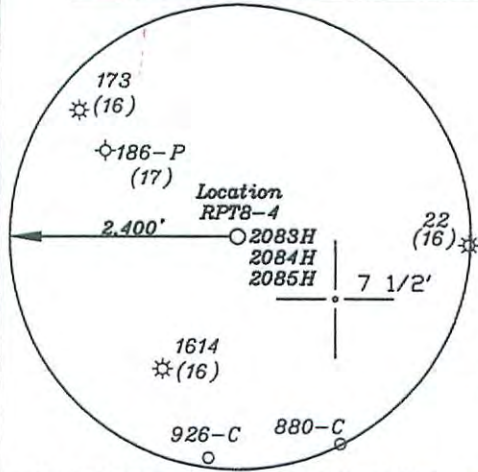
- A-Hair et al TM. 2-2 53.31 Ac. T3107A
B-Sherwood TM. 2-3 14.5 Ac. T3107
C-Parr TM. 23-6.1 8.01 Ac. T3107A
D-Parr TM. 23-6 18.62 Ac. T3106
E-Hair et al TM. 23-5 3 Ac. T3106
F-Hair et al TM. 23-4 9 Ac. T3106
G-Weekley Est. TM. 23-27 7 Ac. T3109A2
H-Adams TM. 23-1 20 Ac. T3901A1
I-Bedore TM. 23-3 9 Ac. RPT11
J-Parr TM. 17-54 17.43 Ac. T3221
K-Parr TM. 17-55 34 Ac. T3246
L-Williams TM. 17-57 12.51 Ac. T3246A
M-Weekley et al TM. 16-34 15 Ac. T3246A
N-Williams TM. 17-57.3 31.22 Ac. T3246A
O-Williams TM. 17-57.2 29.6 Ac. T3246A
P-Williams TM. 17-57.1 20.47 Ac. T3246A
Q-Hammitt et al TM. 17-34 18.49 Ac.
R-Nichols et al TM. 2-19 12.5 Ac.
S-Weekley TM. 16-33 16.5 Ac. T3248B
T-Wilkinson TM. 17-33 1 Ac.
U-Peck TM. 17-28 5 Ac.
V-Parr TM. 23-7 46.5 Ac. T4002B

Surface Hole Location
Geo. NAD 83-39.483128 N, 80.785998 W
UTM NAD 83(Meters)-4370413.91 N, 518404.15 E
UTM NAD 83(Feet)-14338599.65 N, 1700797.62 E
Landing Point Location
Geo. NAD 83-39.488062 N, 80.785641 W
UTM NAD 83(Meters)-4370961.56 N, 518433.54 E
UTM NAD 83(Feet)-14340396.37 N, 1700894.04 E
Bottom Hole Location
Geo. NAD 83-39.504447 N, 80.792657 W
UTM NAD 83(Meters)-4372778.59 N, 517826.02 E
UTM NAD 83(Feet)-14346357.77 N, 1698900.86 E



NORTH

Longitude 80-45-00 W
Top Hole 6,146'
Bottom Hole 13,556'



- Notes:
1. All wells within 500' of the horizontal leg are shown on this plat based upon information taken from DEP mapping, well plats & aerial photos.
2. No waters wells were found within 250' of the location. No dwelling or agricultural buildings were found within 625' of the center of the well pad.
3. Ties to wells and corners are based on State Plane Grid North-WV North Zone NAD 83.

Table with 3 columns: NUMBER, DIRECTION, DISTANCE. Contains well location data.

(+) DENOTES LOCATION OF WELL ON UNITED STATES TOPOGRAPHIC MAPS

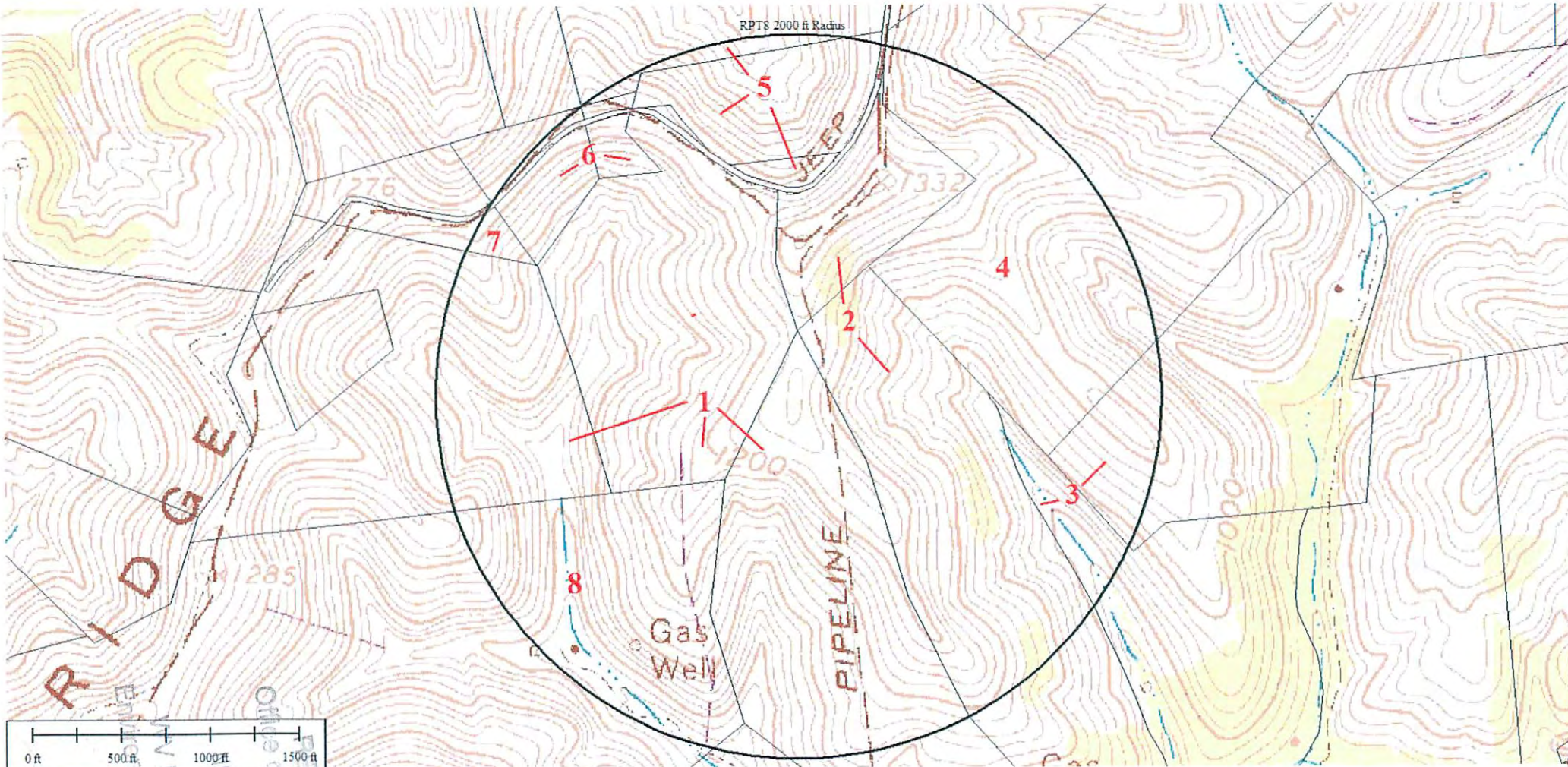
FILE NO.
DRAWING NO. 1
SCALE 1" = 2000'
MINIMUM DEGREE OF ACCURACY 1 in 200
PROVEN SOURCE OF ELEVATION GPS
submeter unit

I THE UNDERSIGNED, HEREBY CERTIFY THAT THIS PLAT IS CORRECT TO THE BEST OF MY KNOWLEDGE AND BELIEF AND SHOWS ALL THE INFORMATION REQUIRED BY LAW AND THE RULES ISSUED AND PRESCRIBED BY THE DEPARTMENT OF ENVIRONMENTAL PROTECTION.
(SIGNED) David L Jackson
R.P.E. L.L.S. 708

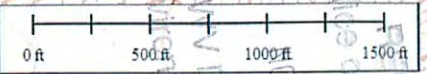


STATE OF WEST VIRGINIA
Division of Environmental Protection
OFFICE OF OIL AND GAS
DATE November 11, 2015
OPERATOR'S WELL NO. RPT8 4
API WELL NO.
WELL TYPE: OIL GAS X LIQUID INJECTION WASTE DISPOSAL STATE COUNTY PERMIT
(If 'GAS') PRODUCTION X STORAGE DEEP SHALLOW X
LOCATION: ELEVATION 1,246.5' WATER SHED Big Run
DISTRICT McElroy COUNTY Tyler
QUADRANGLE Shirley 7 1/2'
SURFACE OWNER Jack Hair et al ACREAGE 85 ac
OIL & GAS ROYALTY OWNER Jack Hair et al (85 Ac.)
LEASE NO. RPT 8
PROPOSED WORK: DRILL X CONVERT DRILL DEEPER REDRILL FRACTURE OR
STIMULATE X PLUG OFF OLD FORMATION PERFORATE NEW FORMATION X OTHER PHYSICAL CHANGE IN WELL (SPECIFY)
PLUG AND ABANDON CLEAN OUT AND REPLUG
TARGET FORMATION Marcellus ESTIMATED DEPTH TVD=6288' TMD=13820'
WELL OPERATOR Jay Bee Oil & Gas, Inc. DESIGNATED AGENT Randy Broda
ADDRESS 1720 Rt. 22 East Union, NJ 07083 ADDRESS Rt. 1 Box 5 Cairo, WV 26337

04/22/2016



RPTS 2000 ft Radius



RIDGE

Gas Well

PIPELINE

RECEIVED
Office of Oil and Gas
Department of
Environmental Protection
NOV 18 2015

95-02339