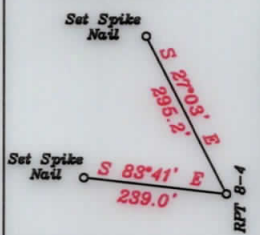


References



Notes:

- All wells within 500' of the horizontal leg are shown on this plat based upon information taken from DEP mapping, well plats & aerial photos.
- No waters wells were found within 250' of the location. No dwelling or agricultural buildings were found within 625' of the center of the well pad.

- A-Hair et al TM. 2-2 53.31 Ac. T1-13
- B-Sherwood TM. 2-3 14.5 Ac. T3107
- C-Parr TM. 23-6.1 8.01 Ac. T3107A
- D-Parr TM. 23-6 18.62 Ac. T3106
- E-Hair et al TM. 23-5 3 Ac. T3106
- F-Hair et al TM. 23-4 9 Ac. T3106
- G-Weekley Est. TM. 23-27 7 Ac. T3109A2
- H-Adams TM. 23-1 20 Ac. T3901A1
- I-Bedore TM. 23-3 9Ac. RPT11
- J-Parr TM. 17-54 17.43 Ac. T3221
- K-Parr TM. 17-55 34 Ac. T3246
- L-Williams TM. 17-57 12.51 Ac. T3246A
- M-Weekley et al TM. 16-34 15 Ac. T3248A
- N-Williams TM. 17-57.3 31.22 Ac. T3246A
- O-Williams TM. 17-57.2 29.6 Ac. T3246A
- P-Williams TM. 17-57.1 20.47 Ac. T3246A
- Q-Hammett et al TM. 17-34 18.49 Ac.
- R-Nichols et al TM.2-19 12.5 Ac.
- S-Weekley TM. 16-33 16.5 Ac. T3248B
- T-Wilkinson TM. 17-33 1 Ac.
- U-Peck TM. 17-28 5 Ac.
- V-Parr TM. 23-7 46.5 Ac. T4002B

Surface Hole Location

Geo. NAD 83-39.483129 N, 80.785998 W
 UTM NAD 83(Meters)-4370413.98 N, 518404.12 E
 UTM NAD 83(Feet)-14338599.85 N, 1700797.53 E

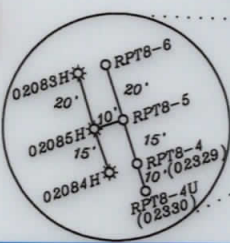
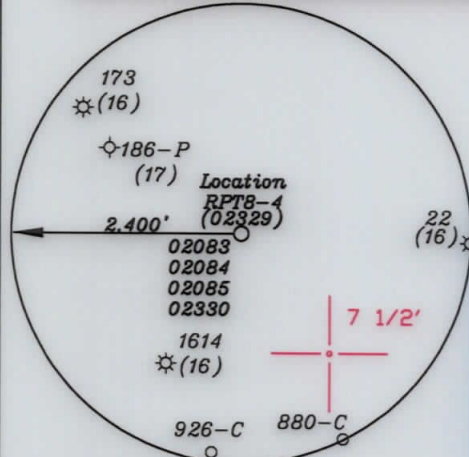
Landing Point Location

Geo. NAD 83-39.487956 N, 80.785651 W
 UTM NAD 83(Meters)-4370949.81 N, 518432.67 E
 UTM NAD 83(Feet)-14340357.83 N, 1700891.18 E

Bottom Hole Location

Geo. NAD 83-39.504862 N, 80.792722 W
 UTM NAD 83(Meters)-4372824.56 N, 517820.32 E
 UTM NAD 83(Feet)-14346508.59 N, 1698882.16 E

NORTH



Surface Hole Location

Geo. NAD 83-39.483128 N, 80.785998 W
 UTM NAD 83(Meters)-4370413.91 N, 518404.15 E
 UTM NAD 83(Feet)-14338599.65 N, 1700797.62 E

Landing Point Location

Geo. NAD 83-39.488062 N, 80.785641 W
 UTM NAD 83(Meters)-4370961.56 N, 518433.54 E
 UTM NAD 83(Feet)-14340396.37 N, 1700894.04 E

Bottom Hole Location

Geo. NAD 83-39.504447 N, 80.792657 W
 UTM NAD 83(Meters)-4372778.59 N, 517826.02 E
 UTM NAD 83(Feet)-14346357.62 N, 1698900.86 E

NUMBER	DIRECTION	DISTANCE
L1	S37°51' E	1,945'
L2	S58°37' E	2,031'
L3	N04°00' E	1,761'

7 1/2'

6,473'

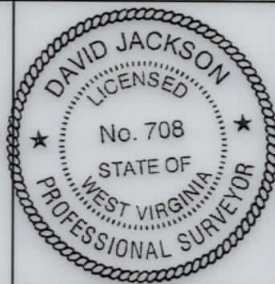
3. Ties to wells and corners are based on State Plane Grid North-WV North Zone NAD 83.

(+) DENOTES LOCATION OF WELL ON UNITED STATES TOPOGRAPHIC MAPS

FILE NO. _____
 DRAWING NO. 1
 SCALE 1" = 2000'
 MINIMUM DEGREE OF ACCURACY 1 in 200
 PROVEN SOURCE OF ELEVATION GPS
submeter unit

I THE UNDERSIGNED, HEREBY CERTIFY THAT THIS PLAT IS CORRECT TO THE BEST OF MY KNOWLEDGE AND BELIEF AND SHOWS ALL THE INFORMATION REQUIRED BY LAW AND THE RULES ISSUED AND PRESCRIBED BY THE DEPARTMENT OF ENVIRONMENTAL PROTECTION.

(SIGNED) David L Jackson
 R.P.E. _____ P.S. 708



STATE OF WEST VIRGINIA
 Division of Environmental Protection
 OFFICE OF OIL AND GAS

DATE June 2, 2020
 OPERATOR'S WELL NO. RPT8 4
 API WELL NO. AsDrilled

WELL TYPE: OIL X GAS X LIQUID INJECTION X WASTE DISPOSAL _____ STATE 47 COUNTY 095 PERMIT 02329
 (IF 'GAS') PRODUCTION X STORAGE X DEEP X SHALLOW _____

LOCATION: ELEVATION 1,245.9' WATER SHED Big Run
 DISTRICT McElroy COUNTY Tyler
 QUADRANGLE Shirley 7 1/2'

SURFACE OWNER Jack Hair et al ACREAGE 85 ac
 OIL & GAS ROYALTY OWNER Jack Hair et al (85 Ac.)

LEASE NO. RPT 8

PROPOSED WORK: DRILL _____ CONVERT _____ DRILL DEEPER _____ REDRILL _____ FRACTURE OR STIMULATE _____ PLUG OFF OLD FORMATION _____ PERFORATE NEW FORMATION _____ OTHER PHYSICAL CHANGE IN WELL (SPECIFY) AsDrilled

PLUG AND ABANDON _____ CLEAN OUT AND REPLUG _____
 TARGET FORMATION Marcellus ESTIMATED DEPTH TVD=6,886' TMD=14,728'
 WELL OPERATOR Jay Bee Oil & Gas, Inc. DESIGNATED AGENT Randy Broda
 ADDRESS 1720 Rt. 22 East Union, NJ 07083 ADDRESS Rt. 1 Box 5 Cairo, WV 26337

LONGITUDE 80-45-00 W Bottom Hole 13,407' Top Hole 6,146'