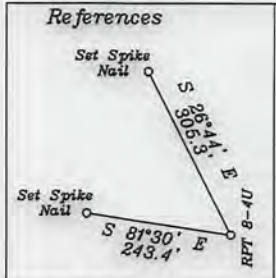


LATITUDE 39-30-00 N TH
 LATITUDE 39-32-30 N BH

400' from Bore Path
 500' from Bore Path
 Unit Boundary Line

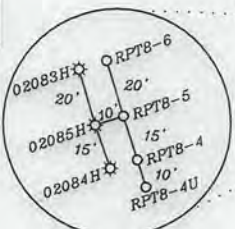
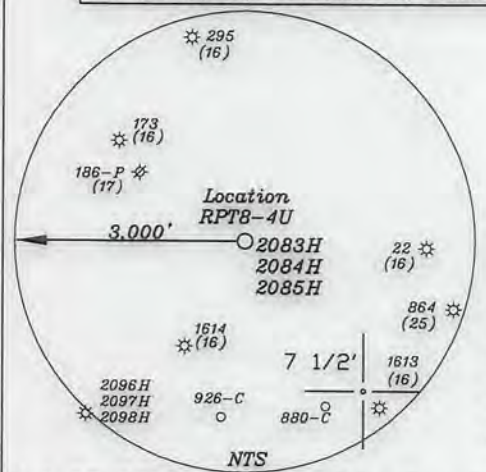


- A-Hair etal T.M. 2-2 53.31 Ac. T3107
- B-Sherwood T.M. 2-3 14.5 Ac. T3107
- C-Parr T.M. 23-6.1 8.01 Ac. T3107A
- D-Parr T.M. 23-6 18.62 Ac. T3106
- E-Hair etal T.M. 23-5 3 Ac. T3106
- F-Hair etal T.M. 23-4 9 Ac. T3106
- G-Weekley Est. T.M. 23-27 7 Ac. T3109A2
- H-Adams T.M. 23-1 20 Ac. T3901A1
- I-Bedore T.M. 23-3 9Ac. RPT11
- J-Parr T.M. 17-54 17.43 Ac. T3221
- K-Parr T.M. 17-55 34 Ac. T3246
- L-Williams T.M. 17-57 12.51 Ac. T3246A
- M-Weekley etal T.M. 16-34 15 Ac. T3248A
- N-Williams T.M. 17-57.3 31.22 Ac. T3246A
- O-Williams T.M. 17-57.2 29.6 Ac. T3246A
- P-Williams T.M. 17-57.1 20.47 Ac. T3246A
- Q-Hammett etal T.M. 17-34 18.49 Ac.
- R-Nichols etal T.M. 2-19 12.5 Ac.
- S-Weekley T.M. 16-33 16.5 Ac. T3248B
- T-Wilkinson T.M. 17-33 1 Ac.
- U-Peck T.M. 17-28 5 Ac.
- V-Parr T.M. 23-7 46.5 Ac. T4002B

Surface Hole Location
 Geo. NAD 83-39.483102 N, 80.785987 W
 UTM NAD 83(Meters)-4370411.03 N, 518405.13 E
 UTM NAD 83(Feet)-14338590.18 N, 1700800.82 E

Landing Point Location
 Geo. NAD 83-39.488062 N, 80.785641 W
 UTM NAD 83(Meters)-4370961.56 N, 518433.54 E
 UTM NAD 83(Feet)-14340396.37 N, 1700894.04 E

Bottom Hole Location
 Geo. NAD 83-39.501976 N, 80.791599 W
 UTM NAD 83(Meters)-4372504.57 N, 517917.64 E
 UTM NAD 83(Feet)-14345458.74 N, 1699201.45 E



- Notes:**
1. All wells within 500' of the horizontal leg are shown on this plat based upon information taken from DEP mapping, well plats & aerial photos.
 2. No waters wells were found within 250' of the location. No dwelling or agricultural buildings were found within 625' of the center of the well pad.
 3. Well bore paths and Top Hole location are over 400' from all lease lines.
 4. Ties to wells and corners are based on State Plane Grid North-WV North Zone NAD 83.

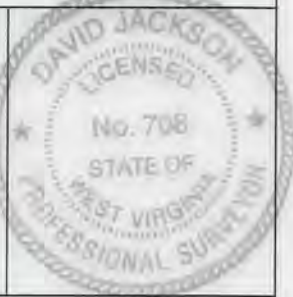
NUMBER	DIRECTION	DISTANCE
L1	S37°46' E	1,955'
L2	S58°26' E	2,039'
L3	N03°55' E	1,809'

(+) DENOTES LOCATION OF WELL ON UNITED STATES TOPOGRAPHIC MAPS

FILE NO. _____
 DRAWING NO. 1
 SCALE 1" = 2000'
 MINIMUM DEGREE OF ACCURACY 1 in 200
 PROVEN SOURCE OF ELEVATION GPS
submeter unit

I THE UNDERSIGNED, HEREBY CERTIFY THAT THIS PLAT IS CORRECT TO THE BEST OF MY KNOWLEDGE AND BELIEF AND SHOWS ALL THE INFORMATION REQUIRED BY LAW AND THE RULES ISSUED AND PRESCRIBED BY THE DEPARTMENT OF ENVIRONMENTAL PROTECTION.

(SIGNED) David E. Jackson
 R.P.E. _____ L.L.S. 708



STATE OF WEST VIRGINIA
 Division of Environmental Protection
 OFFICE OF OIL AND GAS

DATE November 11, 2015
 OPERATOR'S WELL NO. RPT8 4U
 API WELL NO. _____

WELL TYPE: OIL GAS LIQUID INJECTION _____ WASTE DISPOSAL _____
 (IF "GAS") PRODUCTION X STORAGE _____ DEEP X SHALLOW _____

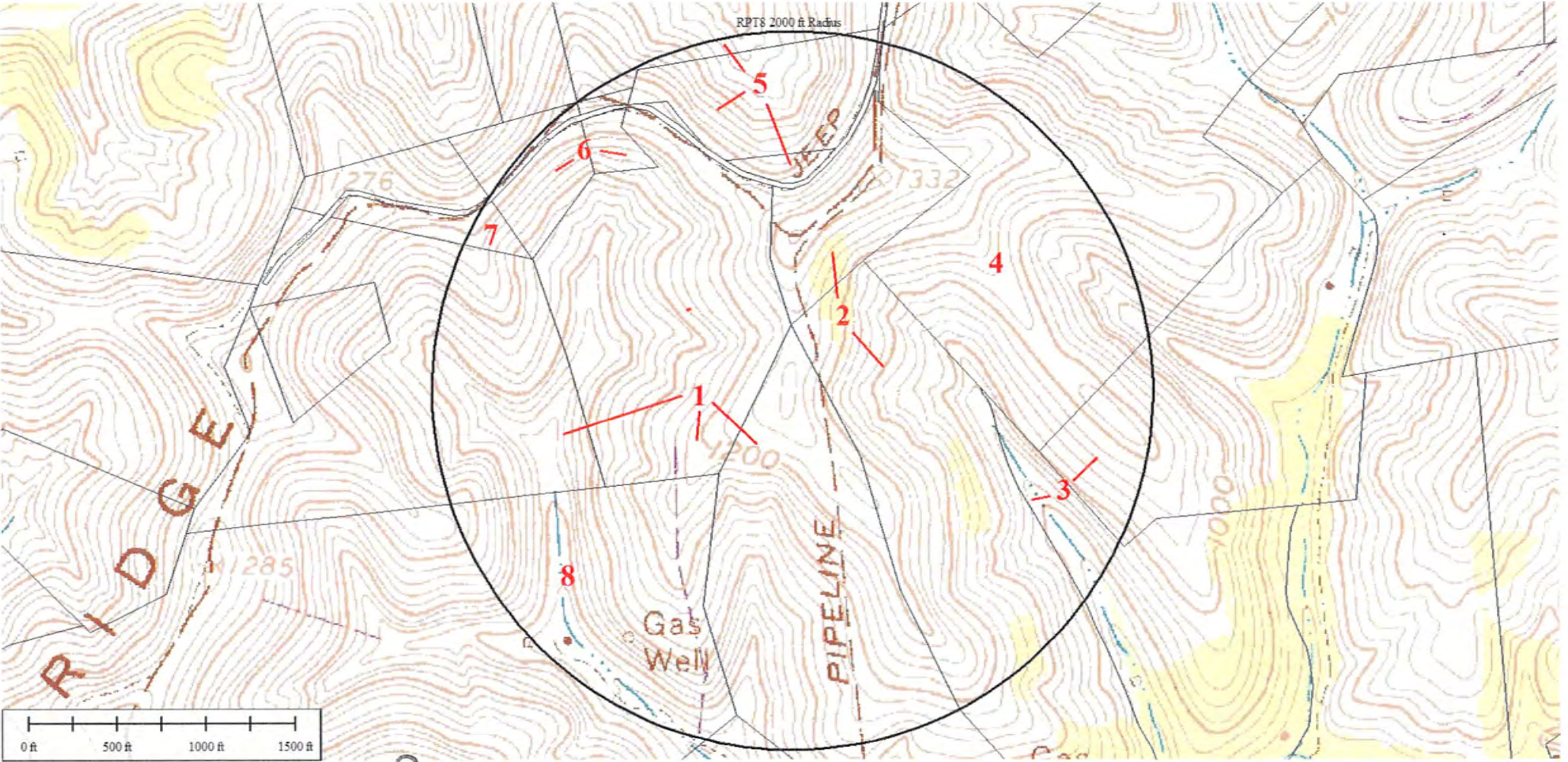
LOCATION: ELEVATION 1,246.5' WATER SHED Big Run
 DISTRICT McElroy COUNTY Tyler
 QUADRANGLE Shirley 7 1/2'

SURFACE OWNER Jack Hair et al ACREAGE 85 ac
 OIL & GAS ROYALTY OWNER Jack Hair - 85 Ac.

LEASE NO. RPT 8
 PROPOSED WORK: DRILL X CONVERT _____ DRILL DEEPER _____ REDRILL _____ FRACTURE OR STIMULATE X PLUG OFF OLD FORMATION _____ PERFORATE NEW FORMATION X OTHER PHYSICAL CHANGE IN WELL (SPECIFY) _____
 PLUG AND ABANDON _____ CLEAN OUT AND REPLUG _____
 TARGET FORMATION Utica ESTIMATED DEPTH TVD=11,105' TMD=16,945'
 WELL OPERATOR Jay Bee Oil & Gas, Inc. DESIGNATED AGENT Randy Broda
 ADDRESS 1720 Rt. 22 East Union, NJ 07083 ADDRESS Rt. 1 Box 5 Cairo, WV 26337

04/29/2016

95-02330



Received
Office of Oil & Gas
NOV 18 2015