



west virginia department of environmental protection

Oil and Gas Conservation Commission
601 57th Street, SE Charleston, WV 25304
(304)926-0499, Ext 1656

Earl Ray Tomblin, Governor
Randy C. Huffman, Cabinet Secretary
dep.wv.org

June 30, 2016

Department of Environmental Protection
Office of Oil and Gas
Charleston, WV 25304

RE: Application for Deep Well Permit – API #47-095-02334

COMPANY: Jay-Bee Oil & Gas, Inc.

FARM: Larry 3U

COUNTY: Tyler DISTRICT: Ellsworth QUAD: Middlebourne/Shirley

The deep well review of the application for the above company is **APPROVED TO DRILL TO TRENTON FOR POINT PLEASANT COMPLETION. DOCKET 240-230 EXCEPTION TO SPACING REQUIREMENT**

The applicant has complied with the provision of Chapter 22C-9, of the Code of West Virginia, nineteen hundred and thirty-one (1931), as amended, Oil and Gas Conservation Commission as follows:

1. Comments to Notice of Deviation filed? none
2. Provided a certified copy of duly acknowledged and recorded consent and easement form from all surface owners; yes
3. Provided a tabulation of all deep wells within one mile of the proposed location, including the API number of all deep wells, well name, and the name and address of the operator; yes*
4. Provided a plat showing that the proposed location is a distance of 582 feet from the nearest lease line or unit boundary and showing the following wells drilled to or capable of producing from the objective formation within 3,000 feet of the proposed location.

Sincerely,

Cindy Raines
ERP Administrator

*47-095-02321 – operated by Jay-Bee
47-095-02273 – operated by Antero – no objection



JAY-BEE OIL & GAS, INC.

June 14, 2016

Horizontal Well Permitting Office
ATTN Laura Adkins
Office of Oil and Gas
West Virginia Dept. of Environmental Protection
601 57th Street SE
Charleston, WV 25304

RE: Larry 3U Updated Plat – 47-095-02334

Ms. Adkins:

OK
Booked
240-230

Jay-Bee Oil & Gas, Inc. received approval to drill within 3000' of an additional deep well. This process has created an updated plat for the Larry 3U (API 47-095-02334). The coordinates did not change, but the following changes were made to the original plat:

- ✓ - Rymer 4HD 47-095-02273 was added to the plat, with distances.
- ✓ - Moe 3U 47-095-02321 was added to the plat, with distances.
- ✓ - The distance between the Larry 3U bottom hole and the boundary was updated, a recognized drafting error.
- ✓ - Various notes regarding the deep well distances were added to the plat.

We will be spudding this well within the next 7-10 days, and would like the new plat approved prior to, for our files. Any way that the approval can be expedited would be appreciated.

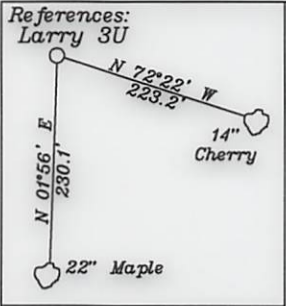
If you would have any questions concerning this matter, please feel free to contact our office at the numbers listed below.

Sincerely,

Shane Dowell
Office Manager

Received
Office of Oil & Gas
JUN 16 2016

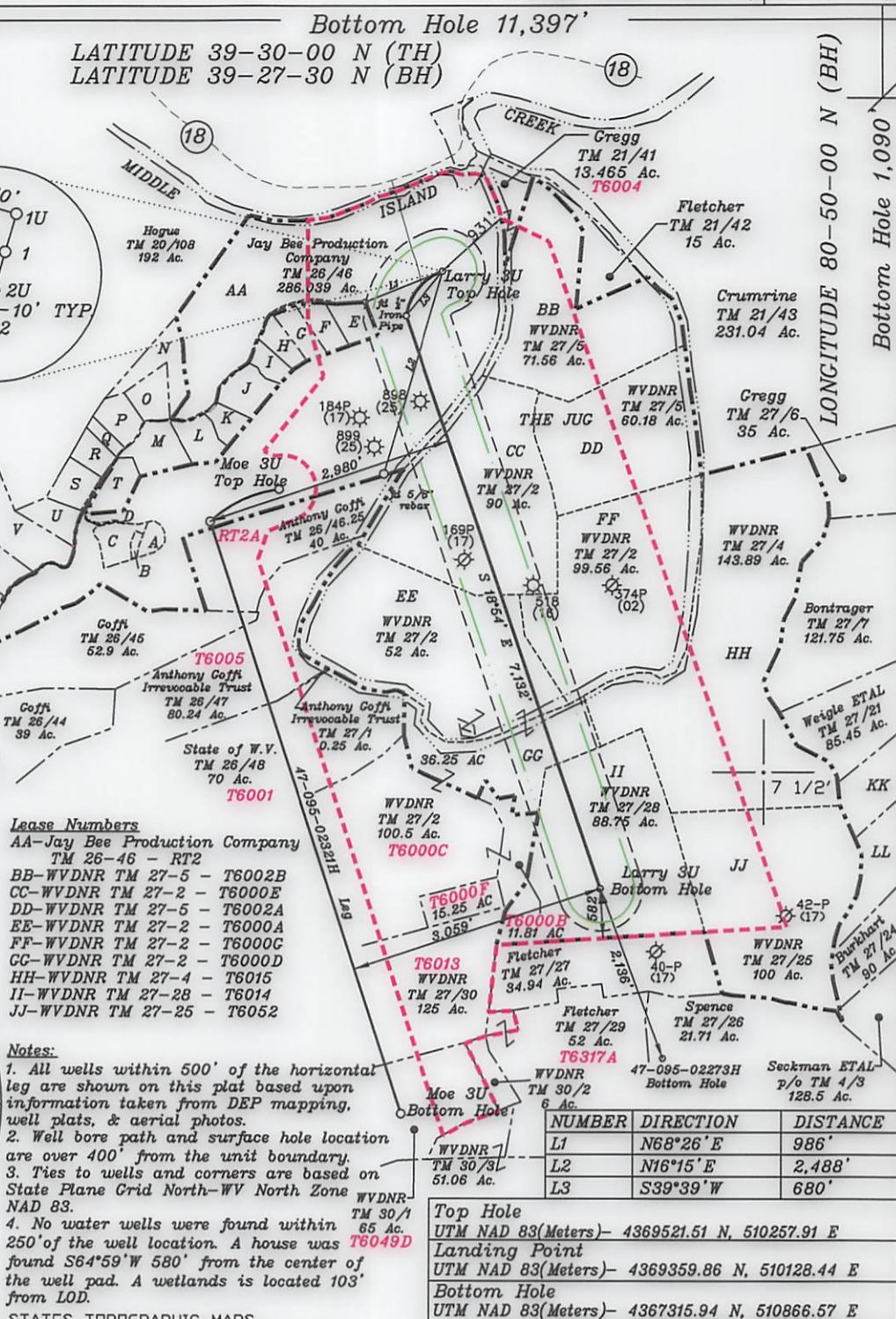
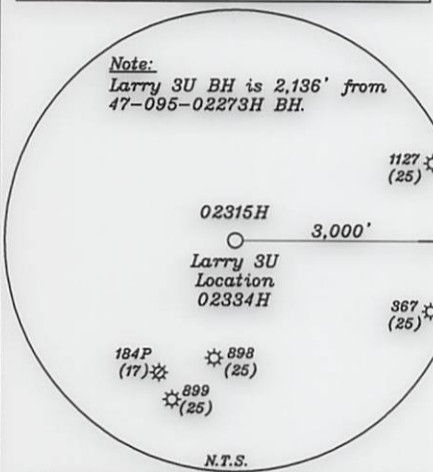
Bottom Hole 11,397'
 LATITUDE 39-30-00 N (TH)
 LATITUDE 39-27-30 N (BH)



- A-Peek TM. 26-46.8 2.079 Ac.
- B-Peek TM. 26-46.20 0.852 Ac.
- C-Peek TM. 26-46.19 4.59 Ac.
- D-Peek TM. 26-46.21 0.22 Ac.
- E-Sulser TM. 20-110 4.412 Ac.
- F-Kelly TM. 26-46.18 4.323 Ac.
- G-Kelly TM. 26-46.17 4.114 Ac.
- H-Johnson TM. 26-46.23 3.598 Ac.
- I-Johnson TM. 26-46.22 2.92 Ac.
- J-Holiday TM. 26-46.13 5.94 Ac.
- K-Holiday TM. 26-46.12 3.238 Ac.
- L-Kanz TM. 26-46.3 5.4 Ac.
- M-Patera TM. 26-46.7 7.32 Ac.
- N-JayBee TM. 26-46.14 8.692 Ac.
- O-Pittman TM. 26-46.2 5.135 Ac.
- P-Johnson TM. 26-46.9 5 Ac.
- Q-Patera TM. 26-46.6 1.702 Ac.
- R-Patera TM. 26-46.15 3.722 Ac.
- S-JayBee TM. 26-46.16 5.094 Ac.
- T-Shrader TM. 26-46.1 5.58 Ac.
- U-Ison TM. 26-46.10 4.98 Ac.
- V-Doty TM. 26-46.5 13.14 Ac.
- W-Kanz TM. 26-46.4 8.1 Ac.
- X-Walton TM. 26-46.11 6.43 Ac.
- Y-JayBee TM. 26-46.24 3.059 Ac.
- Z-JayBee TM. 26-19.9 1.496 Ac.
- KK-Weigle TM. 27-22 60.19 Ac.
- LL-Weigle TM. 27-23 61.62 Ac.

The distance between Larry 3U Top Hole and Moe 3U Top Hole is 3,222'. The distance of the Moe 3U Top Hole to Larry 3U leg is 2,087'.

- 400' from Bore Path
- 500' from Bore Path
- Unit Boundary Line



- Lease Numbers
- AA-Jay Bee Production Company TM 26-46 - RT2
 - BB-WVDNR TM 27-5 - T6002B
 - CC-WVDNR TM 27-2 - T6000E
 - DD-WVDNR TM 27-5 - T6002A
 - EE-WVDNR TM 27-2 - T6000A
 - FF-WVDNR TM 27-2 - T6000G
 - GG-WVDNR TM 27-2 - T6000D
 - HH-WVDNR TM 27-4 - T6015
 - II-WVDNR TM 27-28 - T6014
 - JJ-WVDNR TM 27-25 - T6052

- Notes:
1. All wells within 500' of the horizontal leg are shown on this plat based upon information taken from DEP mapping, well plats, & aerial photos.
 2. Well bore path and surface hole location are over 400' from the unit boundary.
 3. Ties to wells and corners are based on State Plane Grid North-WV North Zone NAD 83.
 4. No water wells were found within 250' of the well location. A house was found S64°59'W 580' from the center of the well pad. A wetlands is located 103' from LOD.

NUMBER	DIRECTION	DISTANCE
L1	N68°26' E	986'
L2	N16°15' E	2,488'
L3	S39°39' W	680'

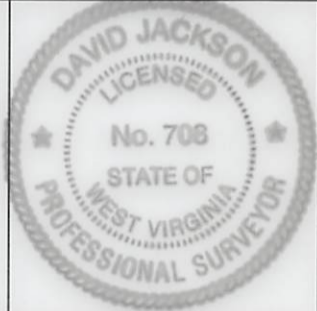
Top Hole	UTM NAD 83(Meters)- 4369521.51 N, 510257.91 E
Landing Point	UTM NAD 83(Meters)- 4369359.86 N, 510128.44 E
Bottom Hole	UTM NAD 83(Meters)- 4367315.94 N, 510866.57 E

(+) DENOTES LOCATION OF WELL ON UNITED STATES TOPOGRAPHIC MAPS

FILE NO. _____
 DRAWING NO. 1
 SCALE 1" = 2000'
 MINIMUM DEGREE OF ACCURACY 1 in 200
 PROVEN SOURCE OF ELEVATION GPS
submeter unit

I THE UNDERSIGNED, HEREBY CERTIFY THAT THIS PLAT IS CORRECT TO THE BEST OF MY KNOWLEDGE AND BELIEF AND SHOWS ALL THE INFORMATION REQUIRED BY LAW AND THE RULES ISSUED AND PRESCRIBED BY THE DEPARTMENT OF ENVIRONMENTAL PROTECTION.

(SIGNED) David L Jackson
 R.P.E. _____ L.L.S. 708



STATE OF WEST VIRGINIA
 Division of Environmental Protection
 OFFICE OF OIL AND GAS

DATE June 10, 2016
 OPERATOR'S WELL NO. Larry 3U
 API WELL NO. _____

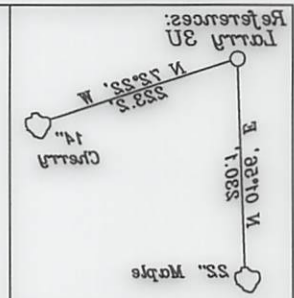
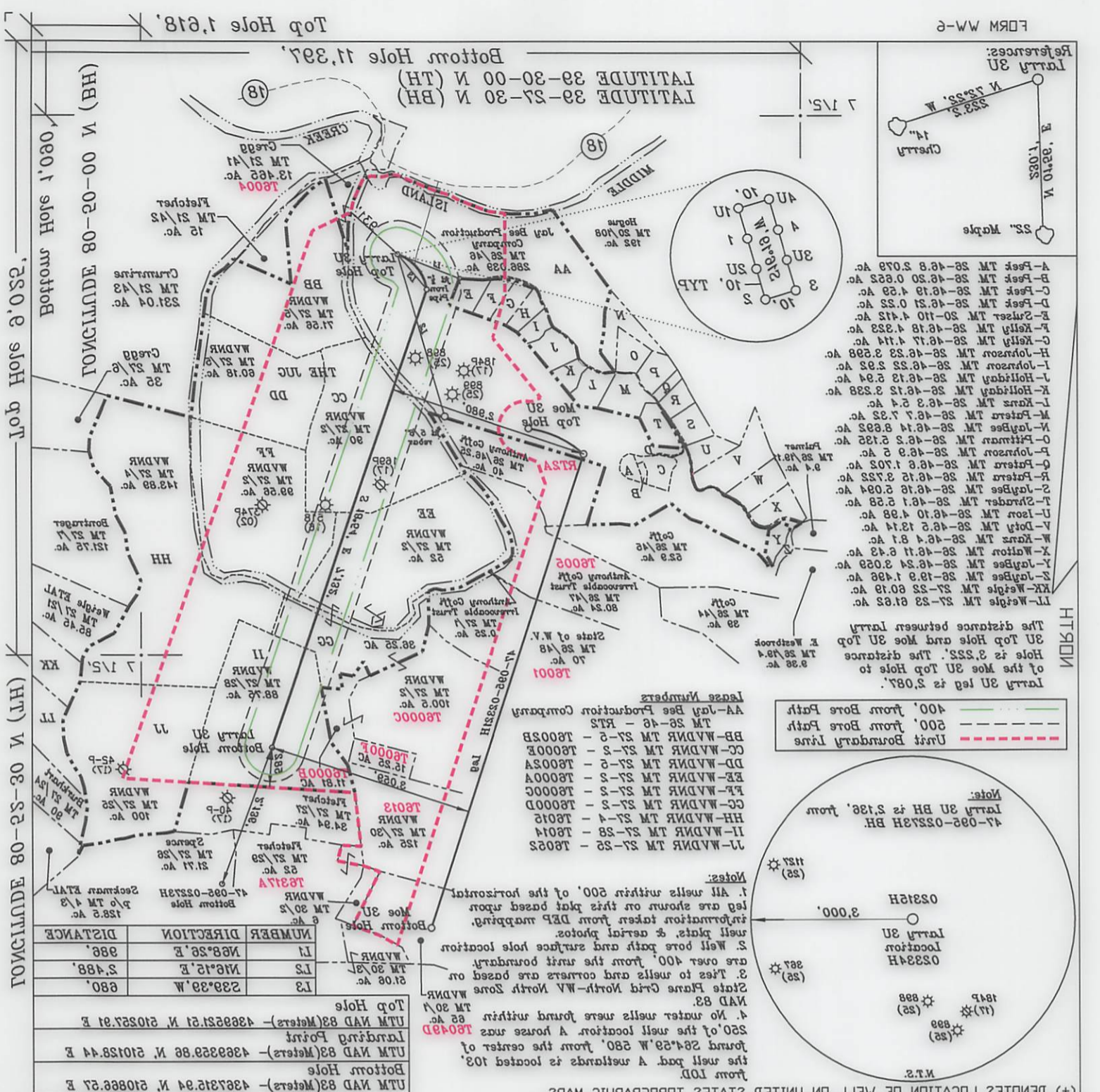
WELL TYPE: OIL GAS X LIQUID INJECTION _____ WASTE DISPOSAL _____
 (IF "GAS") PRODUCTION X STORAGE _____ DEEP X SHALLOW _____
 LOCATION: ELEVATION 739.4' WATER SHED Middle Island Creek
 DISTRICT Ellsworth COUNTY Tyler
 QUADRANGLE Middlebourne 7 1/2' (TH), Shirley 7 1/2' (BH)

SURFACE OWNER Jay Bee Production Company ACREAGE 286.03 ac.
 OIL & GAS ROYALTY OWNER Ridgetop Capital LP, and Ridgetop Capital II, LP LEASE ACREAGE 286.03 ac.
 LEASE NO. RT2

PROPOSED WORK: DRILL X CONVERT _____ DRILL DEEPER _____ REDRILL _____ FRACTURE OR STIMULATE X PLUG OFF OLD FORMATION _____ PERFORATE NEW FORMATION X OTHER PHYSICAL CHANGE IN WELL (SPECIFY) _____

PLUG AND ABANDON _____ CLEAN OUT AND REPLUG _____
 TARGET FORMATION Utica ESTIMATED DEPTH TVD = 10,615'; TMD = 18,247'
 WELL OPERATOR Jay-Bee Oil & Gas, Inc. DESIGNATED AGENT Randy Broda
 ADDRESS 1720 Route 22 E, Union, NJ 07083 ADDRESS 3570 Shields Hill Rd., Cairo, WV 26337

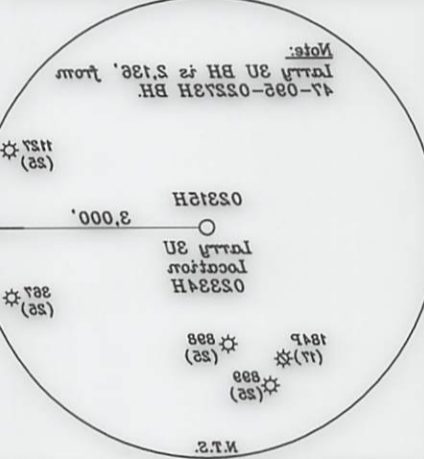
077012016



References:

A-Feet TM 28-46.8 5.079 Ac.
B-Feet TM 28-46.20 0.832 Ac.
C-Feet TM 28-46.19 4.59 Ac.
D-Feet TM 28-46.21 0.22 Ac.
E-Sunset TM 20-110 4.412 Ac.
F-Kelly TM 28-46.18 4.232 Ac.
G-Kelly TM 28-46.17 4.114 Ac.
H-Johnson TM 28-46.23 3.298 Ac.
I-Johnson TM 28-46.22 2.92 Ac.
J-Holiday TM 28-46.13 5.94 Ac.
K-Holiday TM 28-46.12 2.238 Ac.
L-Kane TM 28-46.3 5.4 Ac.
M-Prater TM 28-46.7 7.32 Ac.
N-Prater TM 28-46.14 8.932 Ac.
O-Prater TM 28-46.2 5.132 Ac.
P-Prater TM 28-46.3 5 Ac.
Q-Prater TM 28-46.1 7.02 Ac.
R-Prater TM 28-46.15 3.722 Ac.
S-Jaybee TM 28-46.15 5.094 Ac.
T-Prater TM 28-46.1 5.28 Ac.
U-Loran TM 28-46.10 4.98 Ac.
V-Doty TM 28-46.12 1.4 Ac.
W-Kane TM 28-46.4 8.1 Ac.
X-Watson TM 28-46.11 6.43 Ac.
Y-Jaybee TM 28-46.24 3.029 Ac.
Z-Jaybee TM 28-19.3 1.498 Ac.
AA-Jaybee TM 27-22 80.19 Ac.
BB-Weigle TM 27-23 81.82 Ac.

The distance between Larry 3U Top Hole and Moe 3U Top Hole is 3,222'. The distance of the Moe 3U Top Hole to Larry 3U is 2,087'.



Lease Numbers
 AA-Jay Bee Production Company
 TM 28-46 - RTS
 BB-WADNR TM 27-2 - T8002B
 CC-WADNR TM 27-2 - T8002C
 DD-WADNR TM 27-2 - T8002A
 EE-WADNR TM 27-2 - T8000A
 FF-WADNR TM 27-2 - T8000C
 GG-WADNR TM 27-2 - T8000D
 HH-WADNR TM 27-4 - T8015
 II-WADNR TM 27-28 - T8014
 JJ-WADNR TM 27-25 - T8025

Notes:
 1. All wells within 500' of the horizontal leg are shown on this plat based upon information taken from DEP mapping, well plat & aerial photos.
 2. Well bore path and surface hole location are over 400' from the unit boundary.
 3. Ties to wells and corners are based on State Plane Grid North-WV North Zone WADNR NAD 83.
 4. No water wells were found within 250' of the well location. A horse was found 284.59' W 580' from the center of the well pad. A wetland is located 103' from LOD.

NUMBER	DIRECTION	DISTANCE
L1	N68°26'E	988'
L2	N76°15'E	2,488'
L3	S29°39'W	680'

Top Hole
 UTM NAD 83 (Meters) - 4369521.51 N 510257.91 E
 Landing Point
 UTM NAD 83 (Meters) - 4369523.86 N 510128.44 E
 Bottom Hole
 UTM NAD 83 (Meters) - 4367312.94 N 510886.27 E



I THE UNDERSIGNED, HEREBY CERTIFY THAT THIS PLAT IS CORRECT TO THE BEST OF MY KNOWLEDGE AND BELIEF AND SHOWS ALL THE INFORMATION REQUIRED BY LAW AND THE RULES OF ENVIRONMENTAL PROTECTION.
 (SIGNED) *David Jackson*
 L.S. 708 R.P.E.

FILE NO. _____
 DRAWING NO. 1
 SCALE 1" = 2000'
 MINIMUM DEGREE OF ACCURACY 1 in 200
 PROVEN SOURCE OF ELEVATION GPS
 SUMMETER UNIT

STATE OF WEST VIRGINIA
 Division of Environmental Protection
 OFFICE OF OIL AND GAS

WELL TYPE: OIL GAS LIQUID INJECTION WASTE DISPOSAL
 (IF GAS) PRODUCTION STORAGE DEEP SHALLOW

LOCATION: ELEVATION 739.4' WATER SHED Middle Island Creek
 DISTRICT Ellsworth
 QUADRANGLE Middlebourne 7 1/2 (TH), Shirely 7 1/2 (BH)
 SURFACE OWNER Jay Bee Production Company
 LEASE ACRES 286.03 ac.
 PROPRY OWNER Ridetop Capital LP and Ridetop Capital II LP
 LEASE ACRES 286.03 ac.
 LEASE NO. RTS

PROPOSED WORK: DRILL CONVERT DRILL DEEPER REDRILL FRACTURE OR STIMULATE PLUG OFF OLD FORMATION PERFORATE NEW FORMATION OTHER PHYSICAL CHANGE IN WELL (SPECIFY) _____

PLUG AND ABANDON CLEAN OUT AND REPLUG
 TARGET FORMATION Utica
 ESTIMATED DEPTH TVD = 10,612'; TMD = 18,247'

WELL OPERATOR Jay-Bee Oil & Gas, Inc.
 DESIGNATED AGENT Randy Broda
 ADDRESS 220 Route 22 E, Union, WI 07083
 ADDRESS 3270 Shields Hill Rd, Cairo, WV 26337

DATE June 10, 2016
 OPERATOR'S WELL NO. Larry 3U
 API WELL NO. _____
 STATE COUNTY PERMIT 47 - 092 - 0234H

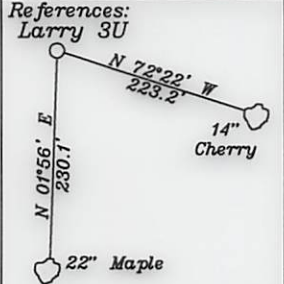
6/10/2016

VOID

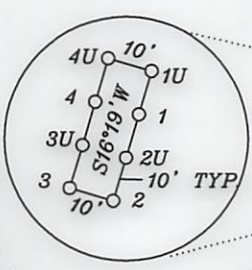
Top Hole 1,618'

FORM WW-6

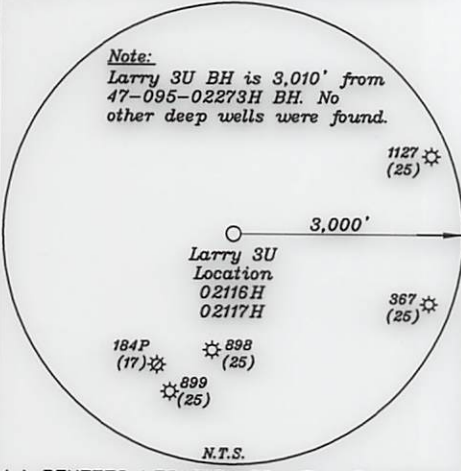
Bottom Hole 11,692'
LATITUDE 39-30-00 N (TH)
LATITUDE 39-27-30 N (BH)



- A-Peek TM. 26-46.8 2.079 Ac.
- B-Peek TM. 26-46.20 0.652 Ac.
- C-Peek TM. 26-46.19 4.59 Ac.
- D-Peek TM. 26-46.21 0.22 Ac.
- E-Sulser TM. 20-110 4.412 Ac.
- F-Kelly TM. 26-46.18 4.323 Ac.
- G-Kelly TM. 26-46.17 4.114 Ac.
- H-Johnson TM. 26-46.23 3.598 Ac.
- I-Johnson TM. 26-46.22 2.92 Ac.
- J-Holiday TM. 26-46.13 5.94 Ac.
- K-Holiday TM. 26-46.12 3.238 Ac.
- L-Kanz TM. 26-46.3 5.4 Ac.
- M-Patera TM. 26-46.7 7.32 Ac.
- N-JayBee TM. 26-46.14 8.692 Ac.
- O-Pittman TM. 26-46.2 5.135 Ac.
- P-Johnson TM. 26-46.9 5 Ac.
- Q-Patera TM. 26-46.6 1.702 Ac.
- R-Patera TM. 26-46.15 3.722 Ac.
- S-JayBee TM. 26-46.16 5.094 Ac.
- T-Shrader TM. 26-46.1 5.58 Ac.
- U-Ison TM. 26-46.10 4.98 Ac.
- V-Doty TM. 26-46.5 13.14 Ac.
- W-Kanz TM. 26-46.4 8.1 Ac.
- X-Walton TM. 26-46.11 6.43 Ac.
- Y-JayBee TM. 26-46.24 3.059 Ac.
- Z-JayBee TM. 26-19.9 1.496 Ac.
- KK-Weigle TM. 27-22 60.19 Ac.
- LL-Weigle TM. 27-23 61.62 Ac.



- 400' from Bore Path
- 500' from Bore Path
- Unit Boundary Line



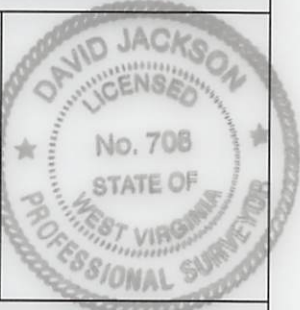
- Notes:
- All wells within 500' of the horizontal leg are shown on this plat based upon information taken from DEP mapping, well plats, & aerial photos.
 - Well bore path and surface hole location are over 400' from the unit boundary.
 - Ties to wells and corners are based on State Plane Grid North-WV North Zone NAD 83.
 - No water wells were found within 250' of the well location. A house was found S64°59'W 580' from the center of the well pad. A wetlands is located 103' from LOD.

NUMBER	DIRECTION	DISTANCE
L1	N68°26' E	986'
L2	N16°15' E	2,488'
L3	S39°39' W	680'

Top Hole	UTM NAD 83(Meters)- 4369521.51 N, 510257.91 E
Landing Point	UTM NAD 83(Meters)- 4369359.86 N, 510128.44 E
Bottom Hole	UTM NAD 83(Meters)- 4367566.55 N, 510776.07 E

FILE NO. _____
 DRAWING NO. 1
 SCALE 1" = 2000'
 MINIMUM DEGREE OF ACCURACY 1 in 200
 PROVEN SOURCE OF ELEVATION GPS
submeter unit

I THE UNDERSIGNED, HEREBY CERTIFY THAT THIS PLAT IS CORRECT TO THE BEST OF MY KNOWLEDGE AND BELIEF AND SHOWS ALL THE INFORMATION REQUIRED BY LAW AND THE RULES ISSUED AND PRESCRIBED BY THE DEPARTMENT OF ENVIRONMENTAL PROTECTION.
 (SIGNED) David Jackson
 R.P.E. _____ L.L.S. 708



STATE OF WEST VIRGINIA
 Division of Environmental Protection
 OFFICE OF OIL AND GAS

DATE April 28, 2016
 OPERATOR'S WELL NO. Larry 3U
 API WELL NO. _____

WELL TYPE: OIL GAS LIQUID INJECTION X WASTE DISPOSAL _____ STATE 47 COUNTY 095 PERMIT 02334
 (IF 'GAS') PRODUCTION X STORAGE _____ DEEP X SHALLOW _____

LOCATION: ELEVATION 739.4' WATER SHED Middle Island Creek
 DISTRICT Ellsworth COUNTY Tyler
 QUADRANGLE Middlebourne 7 1/2' (TH), Shirley 7 1/2' (BH)

SURFACE OWNER Jay Bee Production Company ACREAGE 286.03 ac.
 OIL & GAS ROYALTY OWNER Ridgetop Capital LP, and Ridgetop Capital II, LP LEASE ACREAGE 286.03 ac.
 LEASE NO. RT2

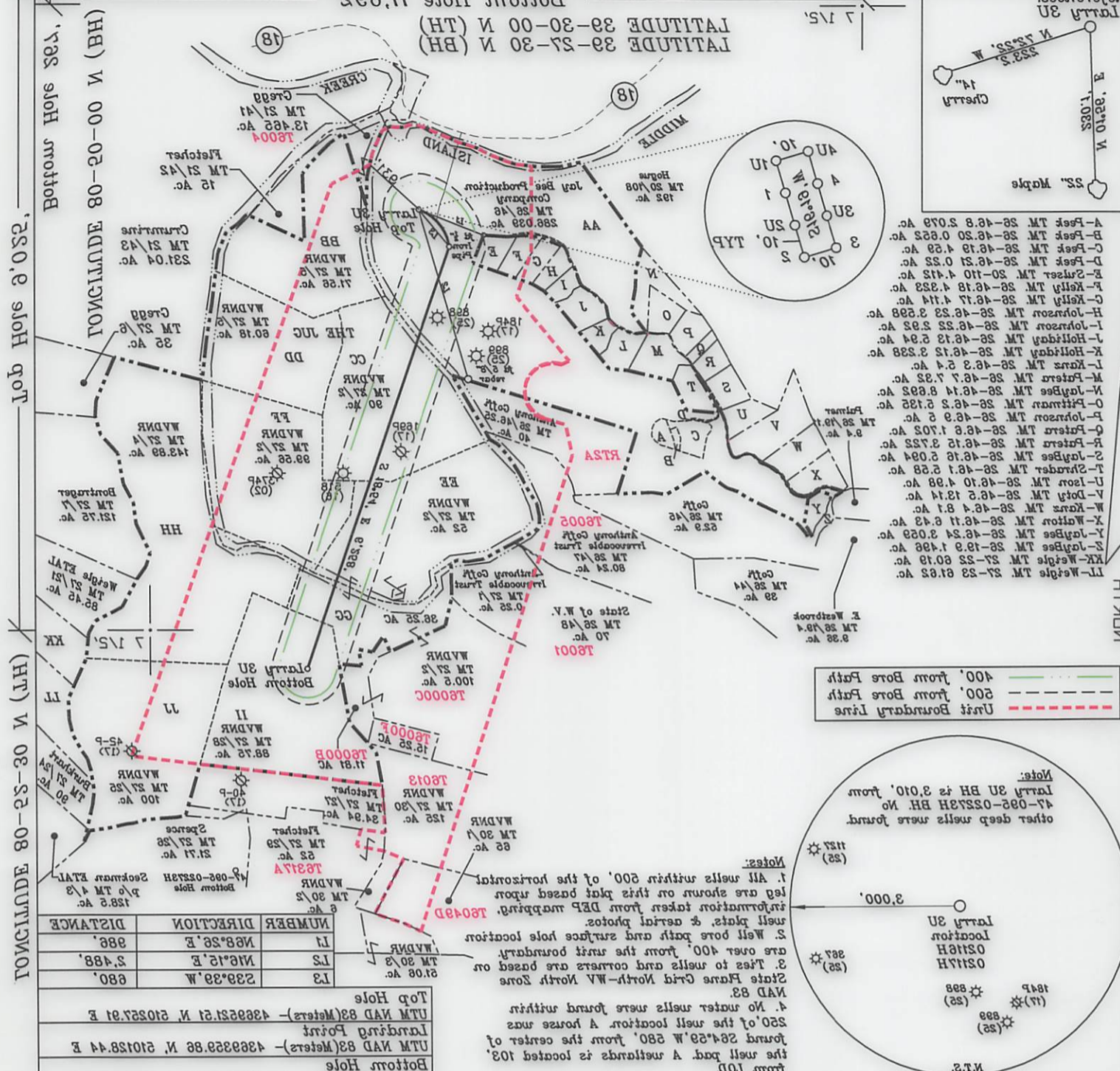
PROPOSED WORK: DRILL X CONVERT _____ DRILL DEEPER _____ REDRILL _____ FRACTURE OR STIMULATE X PLUG OFF OLD FORMATION _____ PERFORATE NEW FORMATION X OTHER PHYSICAL CHANGE IN WELL (SPECIFY) _____

PLUG AND ABANDON CLEAN OUT AND REPLUG
 TARGET FORMATION Utica ESTIMATED DEPTH TVD = 10,615'; TMD = 17,373'
 WELL OPERATOR Jay-Bee Oil & Gas, Inc. DESIGNATED AGENT Randy Broda
 ADDRESS 1720 Route 22 E, Union, NJ 07083 ADDRESS 3570 Shields Hill Rd., Cairo, WV 26337

VOID

Top Hole 1,618'

LATITUDE 39-30-00 N (TH)
LATITUDE 39-27-30 N (BH)



- A-Feek TM 28-48.8 2.079 Ac.
- B-Feek TM 28-48.20 0.822 Ac.
- C-Feek TM 28-48.19 4.29 Ac.
- D-Feek TM 28-48.21 0.22 Ac.
- E-Switzer TM 28-110 4.112 Ac.
- F-Kelly TM 28-48.18 4.222 Ac.
- G-Kelly TM 28-48.17 4.114 Ac.
- H-Johnson TM 28-48.23 2.298 Ac.
- I-Johnson TM 28-48.22 2.92 Ac.
- J-Holiday TM 28-48.13 5.94 Ac.
- K-Holiday TM 28-48.12 2.228 Ac.
- L-Kantz TM 28-48.3 2.4 Ac.
- M-Parsons TM 28-48.7 7.32 Ac.
- N-Lagabee TM 28-48.14 8.922 Ac.
- O-Pittman TM 28-48.2 2.122 Ac.
- P-Johnson TM 28-48.2 2.4 Ac.
- Q-Parsons TM 28-48.1 1.702 Ac.
- R-Parsons TM 28-48.15 8.722 Ac.
- S-Lagabee TM 28-48.16 2.094 Ac.
- T-Shrader TM 28-48.1 2.28 Ac.
- U-Lear TM 28-48.10 4.98 Ac.
- V-Doty TM 28-48.2 12.14 Ac.
- W-Kantz TM 28-48.4 8.1 Ac.
- X-Watson TM 28-48.11 6.43 Ac.
- Y-Lagabee TM 28-48.24 2.029 Ac.
- Z-Lagabee TM 28-48.2 1.48 Ac.
- AA-Weigle TM 27-22 60.19 Ac.
- BB-Weigle TM 27-23 61.82 Ac.

Longitude 80-25-30 W (TH)
Longitude 80-20-00 W (BH)

NUMBER	DIRECTION	DISTANCE
L1	N88°26' E	986'
L2	N16°15' E	2,488'
L3	S29°39' W	680'

Top Hole
 UTM NAD 83 (Meters) - 438252.51 N 510252.91 E
 Landing Point
 UTM NAD 83 (Meters) - 438323.88 N 510128.44 E
 Bottom Hole
 UTM NAD 83 (Meters) - 438258.55 N 510276.07 E

STATE OF WEST VIRGINIA
 PROFESSIONAL SURVEYOR
 No. 708
 LICENSED
 DAVID JACKSON

I THE UNDERSIGNED, HEREBY CERTIFY THAT THIS PLAT IS CORRECT TO THE BEST OF MY KNOWLEDGE AND BELIEF AND SHOWS ALL THE INFORMATION REQUIRED BY LAW AND THE RULES ISSUED AND PRESCRIBED BY THE DEPARTMENT OF ENVIRONMENTAL PROTECTION.
 (SIGNED) David Jackson
 R.P.E. L.2. 708

FILE NO. _____
 DRAWING NO. 1
 SCALE 1" = 2000'
 MINIMUM DEGREE OF ACCURACY 1 in 500
 PROVEN SOURCE OF ELEVATION GPS
 submitter west

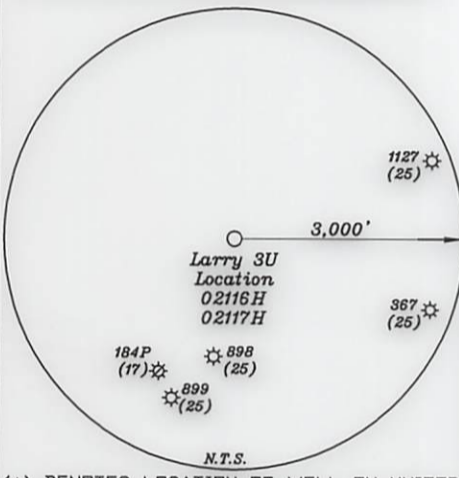
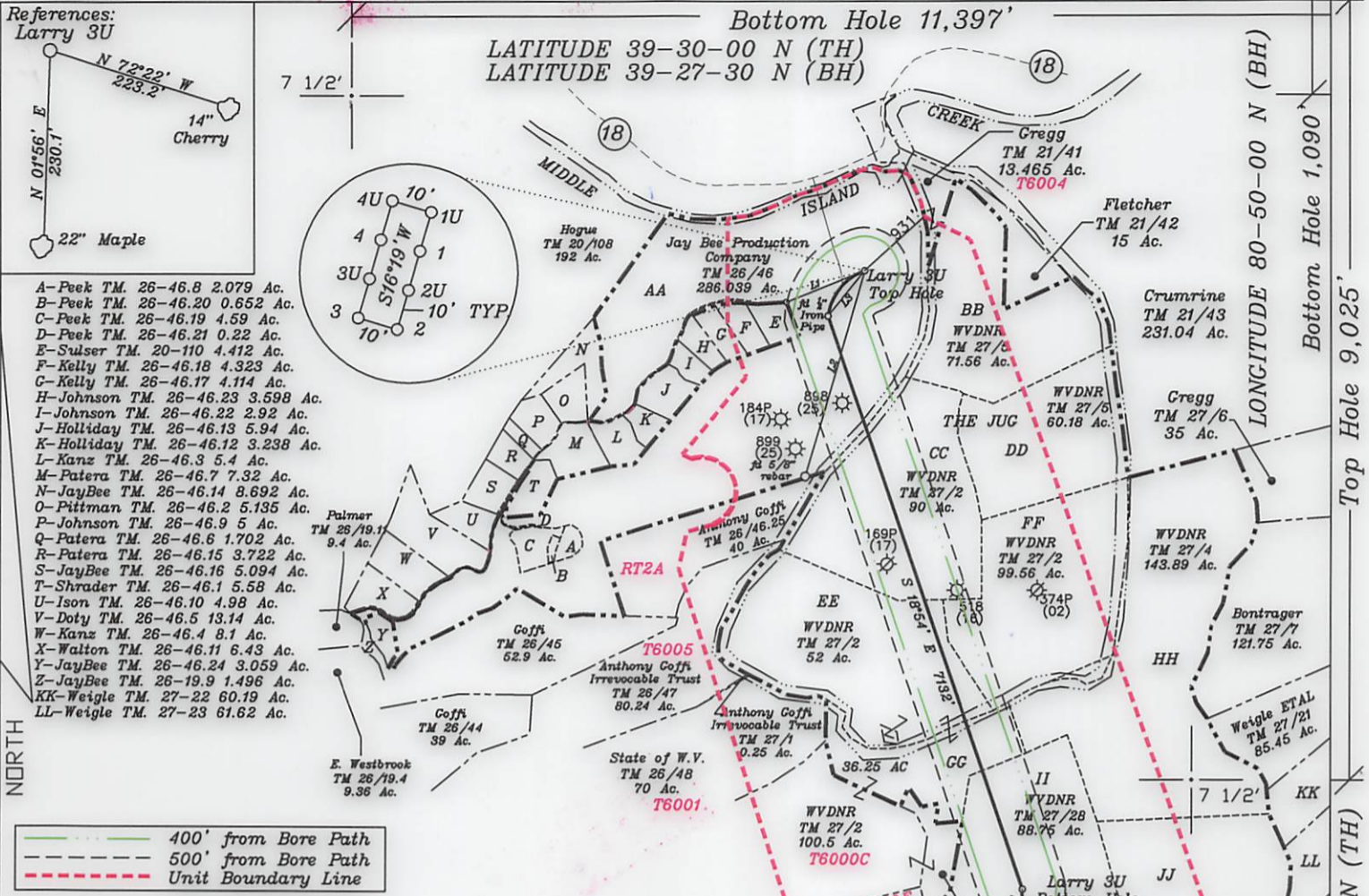
STATE OF WEST VIRGINIA
 Division of Environmental Protection
 OFFICE OF OIL AND GAS

WELL TYPE: OIL GAS LIQUID INJECTION WASTE DISPOSAL _____
 (IF GAS) PRODUCTION STORAGE DEEP SHALLOW _____
 LOCATION: ELEVATION 739.4' WATER SHED Middle Island Creek
 DISTRICT Ellsworth
 QUADRANGLE Middlebourne 7 1/2' (TH), Shirley 7 1/2' (BH)
 SURFACE OWNER Jay Bee Production Company
 OIL & GAS ROYALTY OWNER Ridgeway Capital II, LP LEASE ACRES 286.03 ac.
 ACREAGE 286.03 ac.
 LEASE NO. RTS
 PROPOSED WORK: DRILL CONVERT DRILL DEEPER REDRILL FRACTURE OR STIMULATE PLUG OFF OLD FORMATION PERFORATE NEW FORMATION OTHER PHYSICAL CHANGE IN WELL (SPECIFY) _____
 PLUG AND ABANDON CLEAN OUT AND REPLUG _____
 TARGET FORMATION Utica
 ESTIMATED DEPTH TVD = 10,615'; TMD = 17,373'
 WELL OPERATOR Jay-Bee Oil & Gas, Inc.
 DESIGNATED AGENT Randy Broda
 ADDRESS 3270 Shields Hill Rd., Caron, WV 26037

DATE April 28, 2016
 OPERATOR'S WELL NO. Larry 3U
 API WELL NO. _____
 STATE COUNTY _____
 PERMIT 02334

VOID

VOID



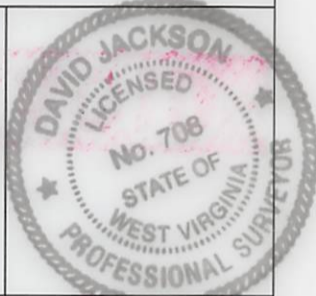
- Notes:**
1. All wells within 500' of the horizontal leg are shown on this plat based upon information taken from DEP mapping, T6049D.
 2. Well bore path and surface hole location are over 400' from the unit boundary.
 3. Ties to wells and corners are based on State Plane Grid North-WV North Zone NAD 83.
 4. No water wells were found within 250' of the well location. A house was found S64°59'W 580' from the center of the well pad. A wetlands is located 103' from LOD.

NUMBER	DIRECTION	DISTANCE
L1	N68°26'E	986'
L2	N16°15'E	2,488'
L3	S39°39'W	680'

Top Hole
 UTM NAD 83(Meters)- 4369521.51 N, 510257.91 E
 Landing Point
 UTM NAD 83(Meters)- 4369359.86 N, 510128.44 E
 Bottom Hole
 UTM NAD 83(Meters)- 4367315.94 N, 510866.57 E

FILE NO. _____
 DRAWING NO. 1
 SCALE 1" = 2000'
 MINIMUM DEGREE OF ACCURACY 1 in 200
 PROVEN SOURCE OF ELEVATION GPS
submeter unit

I THE UNDERSIGNED, HEREBY CERTIFY THAT THIS PLAT IS CORRECT TO THE BEST OF MY KNOWLEDGE AND BELIEF AND SHOWS ALL THE INFORMATION REQUIRED BY LAW AND THE RULES ISSUED AND PRESCRIBED BY THE DEPARTMENT OF ENVIRONMENTAL PROTECTION.
 (SIGNED) David L. Jackson
 R.P.E. _____ L.L.S. 708



STATE OF WEST VIRGINIA
 Division of Environmental Protection
 OFFICE OF OIL AND GAS

DATE December 8, 2015
 OPERATOR'S WELL NO. Larry 3U
 API WELL NO. _____

WELL TYPE: OIL GAS LIQUID INJECTION _____ WASTE DISPOSAL _____
 (IF 'GAS') PRODUCTION X STORAGE _____ DEEP X SHALLOW _____
 LOCATION: ELEVATION 739.4' WATER SHED Middle Island Creek
 DISTRICT Ellsworth COUNTY Tyler
 QUADRANGLE Middlebourne 7 1/2' (TH), Shirley 7 1/2' (BH)
 SURFACE OWNER Jay Bee Production Company ACREAGE 286.03 ac.
 OIL & GAS ROYALTY OWNER Ridgetop Capital LP, and Ridgetop Capital II, LP LEASE ACREAGE 286.03 ac.
 LEASE NO. RT2

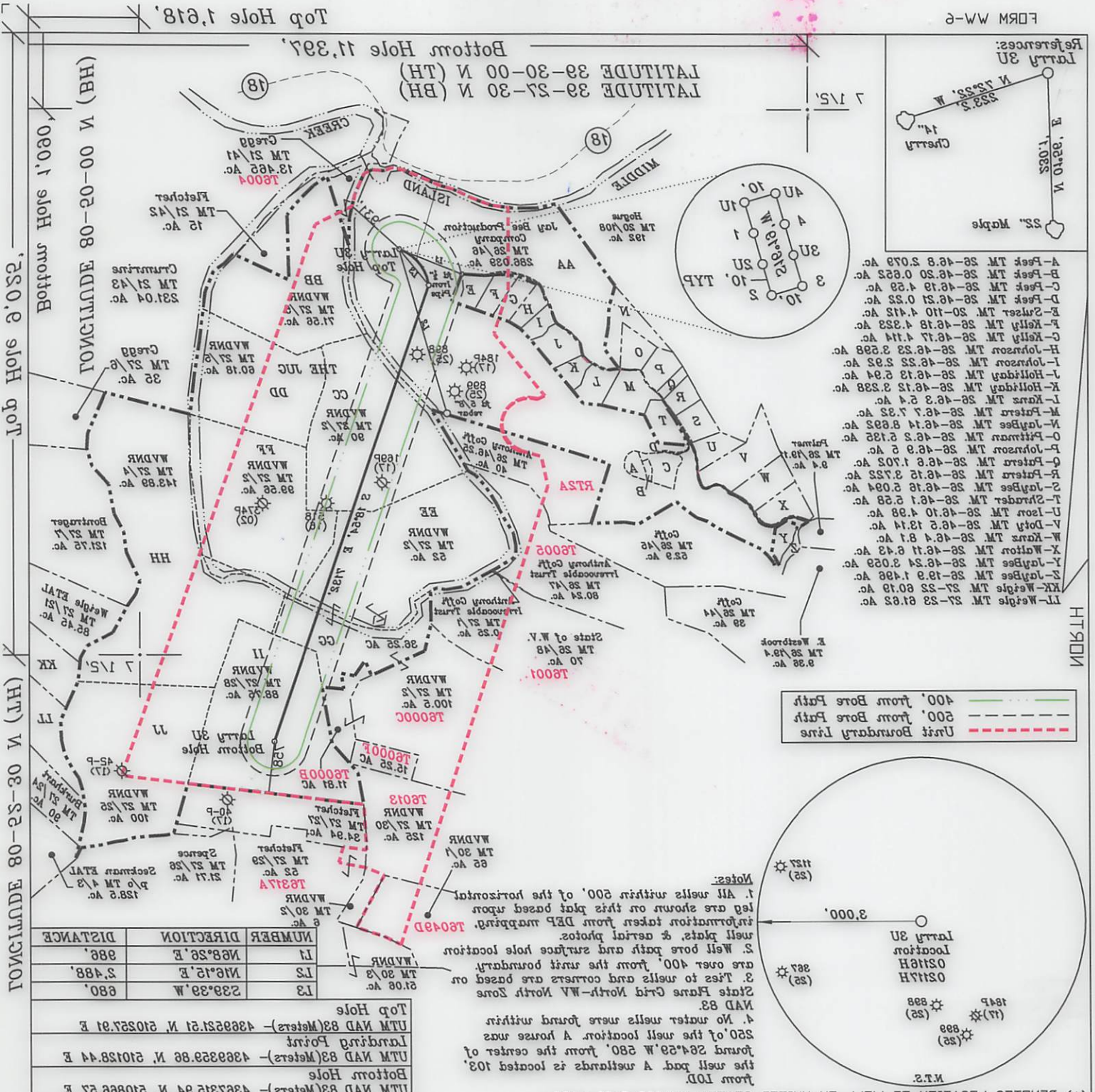
PROPOSED WORK: DRILL X CONVERT _____ DRILL DEEPER _____ REDRILL _____ FRACTURE OR STIMULATE X PLUG OFF OLD FORMATION _____ PERFORATE NEW FORMATION X OTHER PHYSICAL CHANGE IN WELL (SPECIFY) _____

PLUG AND ABANDON _____ CLEAN OUT AND REPLUG _____
 TARGET FORMATION Utica ESTIMATED DEPTH 10,730' TVD = 10,615'; TMD = 18,247'
 WELL OPERATOR Jay-Bee Oil & Gas, Inc. DESIGNATED AGENT Randy Broda
 ADDRESS 1720 Route 22 E, Union, NJ 07083 ADDRESS 3570 Shields Hill Rd., Cairo, WV 26337

07/01/2016

H6A

47 - 095 - 02334
 STATE COUNTY PERMIT



(+) DENOTES LOCATION OF WELL ON UNITED STATES TOPOGRAPHIC MAPS

Notes:
 1. All wells within 500' of the horizontal well path are shown on this plat based upon information taken from DEP mapping, well plat, & aerial photos.
 2. Well bore path and surface hole location are over 400' from the unit boundary.
 3. Ties to wells and corners are based on State Plane Grid North-WV North Zone NAD 83.
 4. No water wells were found within 250' of the well location. A horse was found 264.29' W 280' from the center of the well pad. A wetland is located 103' from LOD.

Top Hole
 UTM NAD 83 (Meters) - 438922.21 N 210257.91 E

Bottom Hole
 UTM NAD 83 (Meters) - 438932.86 N 210128.44 E

Bottom Hole
 UTM NAD 83 (Meters) - 438731.94 N 210866.27 E

NUMBER	DIRECTION	DISTANCE
L1	N88.26° E	388'
L2	N16.15° E	2,488'
L3	239.39° W	680'

(SIGNED) David Jackson
 R.P.E. L.L.S. 708

STATE OF WEST VIRGINIA
 DIVISION OF ENVIRONMENTAL PROTECTION
 OFFICE OF OIL AND GAS

FILE NO. _____
 DRAWING NO. 1
 SCALE 1" = 2000'
 MINIMUM DEGREE OF ACCURACY 1 in 200
 PROVEN SOURCE OF ELEVATION GPS
 SUBMETER UNIT

DATE December 8, 2015
 OPERATOR'S WELL NO. Larry 3U
 API WELL NO. HJA 03334

WELL TYPE: OIL GAS X LIQUID INJECTION WASTE DISPOSAL
 (IF GAS) PRODUCTION X STORAGE DEEP X SHALLOW
 LOCATION: ELEVATION 7394' WATER SHED Middle Island Creek
 DISTRICT Ellsworth
 QUADRANGLE Middlebourne 7 1/2' (TH), Shirely 7 1/2' (BH)
 SURFACE OWNER Jay Bee Production Company
 OIL & GAS ROYALTY OWNER Ridgetop Capital LP and Ridgetop Capital II LP LEASE ACREAGE 286.03 ac. ACREAGE 286.03 ac.

1610/07/2016
 LEASE NO. RTS
 PROPOSED WORK: DRILL X CONVERT DRILL DEEPER REDRILL FRACTURE OR STIMULATE X PLUG OFF OLD FORMATION PERFORATE NEW FORMATION X OTHER PHYSICAL CHANGE IN WELL (SPECIFY)

TARGET FORMATION Utica
 ESTIMATED DEPTH TVD = 10,645'; TMD = 18,247'
 PLUG AND ABANDON CLEAN OUT AND REPLUG
 DESIGNATED AGENT Randy Broda
 WELL OPERATOR Jay-Bee Oil & Gas, Inc.
 ADDRESS 2120 Route 22 E, Union, WI 07083
 ADDRESS 3570 Shields Hill Rd., Carro, WV 26837

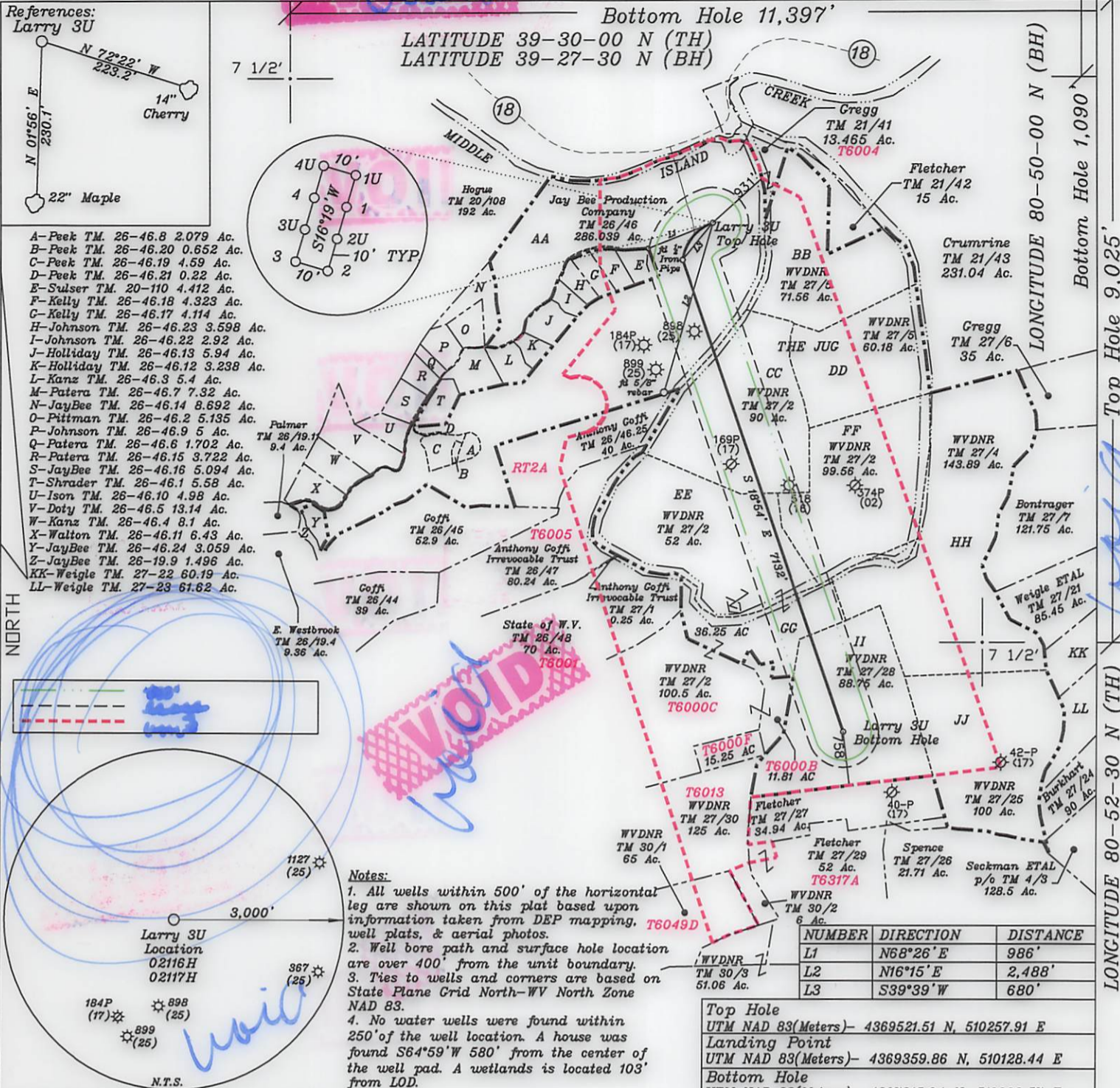
STATE OF WEST VIRGINIA
 DIVISION OF ENVIRONMENTAL PROTECTION
 OFFICE OF OIL AND GAS

DAVID JACKSON
 LICENSED PROFESSIONAL SURVEYOR
 No. 708
 STATE OF WEST VIRGINIA

References:
Larry 3U

Bottom Hole 11,397'

LATITUDE 39-30-00 N (TH)
LATITUDE 39-27-30 N (BH)

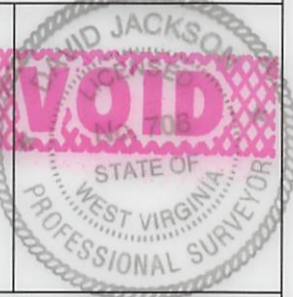


(+) DENOTES LOCATION OF WELL ON UNITED STATES TOPOGRAPHIC MAPS

FILE NO. _____
 DRAWING NO. 1
 SCALE 1" = 2000'
 MINIMUM DEGREE OF ACCURACY 1 in 200
 PROVEN SOURCE OF ELEVATION GPS
submeter unit

I THE UNDERSIGNED, HEREBY CERTIFY THAT THIS PLAT IS CORRECT TO THE BEST OF MY KNOWLEDGE AND BELIEF AND SHOWS ALL THE INFORMATION REQUIRED BY LAW AND THE RULES ISSUED AND PRESCRIBED BY THE DEPARTMENT OF ENVIRONMENTAL PROTECTION.

(SIGNED) [Signature]
 R.P.E. _____ L.L.S. 708



STATE OF WEST VIRGINIA
 Division of Environmental Protection
 OFFICE OF OIL AND GAS

DATE December 8, 2015
 OPERATOR'S WELL NO. Larry 3U
 API WELL NO. 47 095

WELL TYPE: OIL X LIQUID INJECTION _____ WASTE DISPOSAL _____
 (IF 'GAS') PRODUCTION X STORAGE _____ DEEP X SHALLOW _____

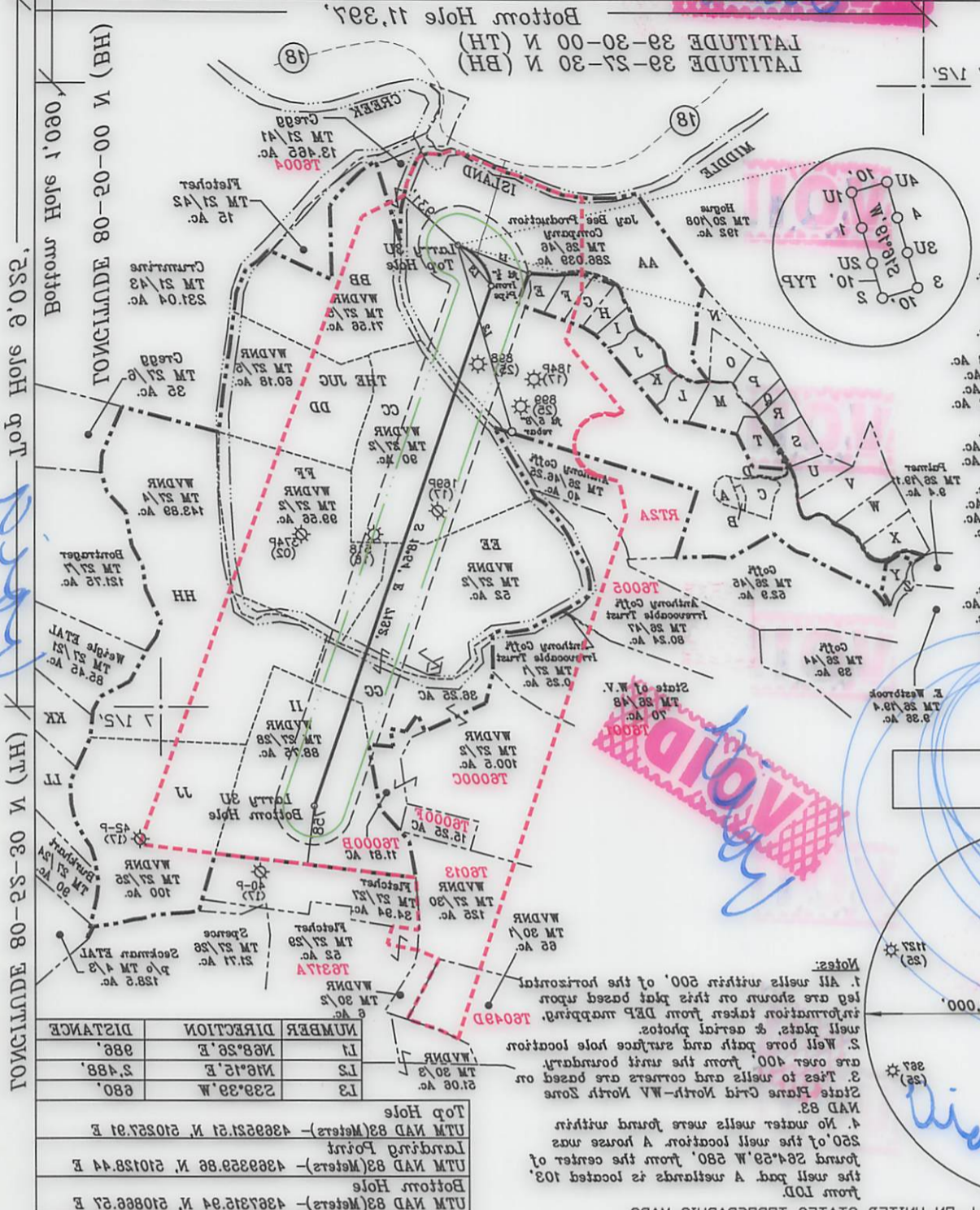
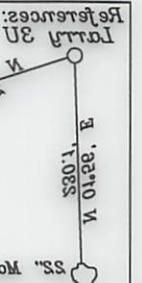
LOCATION: ELEVATION 739.4' WATER SHED Middle Island Creek
 DISTRICT Ellsworth COUNTY Tyler
 QUADRANGLE Middlebourne 7 1/2' (TH), Shirley 7 1/2' (BH)

SURFACE OWNER Jay Bee Production Company ACREAGE 286.03 ac.
 OIL & GAS ROYALTY OWNER Ridgetop Capital LP, and Ridgetop Capital II, LP LEASE ACREAGE 286.03 ac.
 LEASE NO. RT2

PROPOSED WORK: DRILL X CONVERT _____ DRILL DEEPER _____ REDRILL _____ FRACTURE OR STIMULATE X PLUG OFF OLD FORMATION _____ PERFORATE NEW FORMATION X OTHER PHYSICAL CHANGE IN WELL (SPECIFY) _____

PLUG AND ABANDON _____ CLEAN OUT AND REPLUG _____
 TARGET FORMATION Utica ESTIMATED DEPTH TVD = 10,615'; TMD = 18,247'
 WELL OPERATOR Jay-Bee Oil & Gas, Inc. DESIGNATED AGENT Randy Broda
 ADDRESS 1720 Route 22 E, Union, NJ 07083 ADDRESS 3570 Shields Hill Rd., Cairo, WV 26337

07/01/2016



- A-Feet TM 28-48.8 2.079 Ac.
- B-Feet TM 28-48.20 0.822 Ac.
- C-Feet TM 28-48.19 0.22 Ac.
- D-Feet TM 28-48.21 0.22 Ac.
- E-Feet TM 28-110 4.412 Ac.
- F-Kelly TM 28-48.18 4.323 Ac.
- G-Kelly TM 28-48.17 4.114 Ac.
- H-Johnson TM 28-48.23 2.998 Ac.
- I-Johnson TM 28-48.23 2.92 Ac.
- J-Holiday TM 28-48.13 5.94 Ac.
- K-Holiday TM 28-48.12 2.338 Ac.
- L-Kane TM 28-48.3 5.4 Ac.
- M-Patena TM 28-48.7 7.32 Ac.
- N-Jaybee TM 28-48.14 8.932 Ac.
- O-Pittman TM 28-48.2 5.132 Ac.
- P-Johnson TM 28-48.3 5 Ac.
- Q-Patena TM 28-48.8 1.702 Ac.
- R-Patena TM 28-48.15 8.722 Ac.
- S-Jaybee TM 28-48.16 5.094 Ac.
- T-Shrader TM 28-48.1 5.58 Ac.
- U-Lyon TM 28-48.10 4.98 Ac.
- V-Lyon TM 28-48.2 13.14 Ac.
- W-Kane TM 28-48.1 8.1 Ac.
- X-Watson TM 28-48.11 6.43 Ac.
- Y-Jaybee TM 28-48.24 2.029 Ac.
- Z-Jaybee TM 28-19.3 1.198 Ac.
- AA-Weigle TM 27-23 60.19 Ac.
- BB-Weigle TM 27-23 82.8 Ac.



I THE UNDERSIGNED, HEREBY CERTIFY THAT THIS PLAN IS CORRECT TO THE BEST OF MY KNOWLEDGE AND BELIEF AND SHOWS ALL THE INFORMATION REQUIRED BY LAW AND THE RULES ISSUED AND PRESCRIBED BY THE DEPARTMENT OF ENVIRONMENTAL PROTECTION.

(SIGNED) _____
 R.P.E. L.S. 708

STATE OF WEST VIRGINIA
 Division of Environmental Protection
 OFFICE OF OIL AND GAS

WELL TYPE: OIL GAS X LIQUID INJECTION WASTE DISPOSAL
 (IF GAS) PRODUCTION X STORAGE DEEP X SHALLOW
 LOCATION: ELEVATION 739.4' WATER SHED Middle Island Creek
 DISTRICT Ellsworth
 QUADRANGLE Middlebourne 7 1/2' (TH), Shirley 7 1/2' (BH)
 COUNTY Tyler
 SURFACE OWNER Jay Bee Production Company
 LEASE ACREAGE 286.03 ac.
 DATE December 8, 2015

WELL OPERATOR Jay-Bee Oil & Gas, Inc.
 DESIGNATED AGENT Randy Broda
 ADDRESS 3570 Shields Hill Rd., Caro, WV 26837

PROPOSED WORK: DRILL X CONVERT DRILL DEEPER REDRILL FRACTURE OR STIMULATE X PLUG OFF OLD FORMATION PERFORATE NEW FORMATION X OTHER PHYSICAL CHANGE IN WELL (SPECIFY)

PLUG AND ABANDON CLEAN OUT AND REPLUG
 TARGET FORMATION Ulfca
 ESTIMATED DEPTH TVD = 10,615'; TMD = 18,247'

LEASE NO. RTS

DIL & GAS ROYALTY OWNER Ridgtop Capital LP and Ridgtop Capital II LP
 SURFACE OWNER Jay Bee Production Company
 LEASE ACREAGE 286.03 ac.

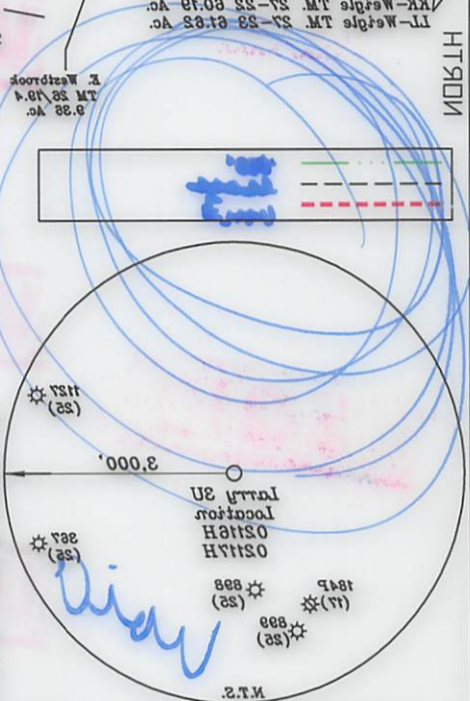
OPERATOR'S WELL NO. Larry 3U
 DATE December 8, 2015

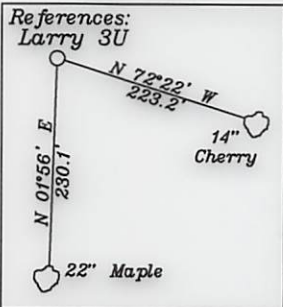
Longitude 80-25-30 W (LH) Longitude 80-20-00 W (BH)

Latitude 39-27-30 N (BH) Latitude 39-30-00 N (TH) Bottom Hole 11,397' Top Hole 1,618'

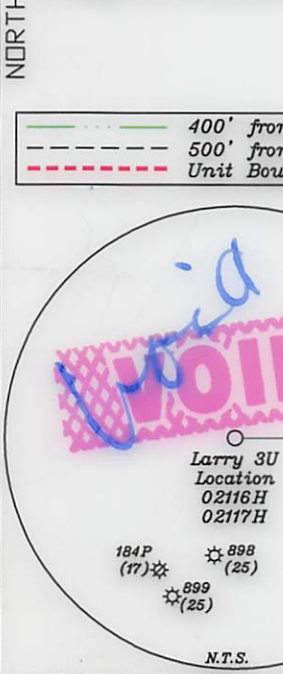
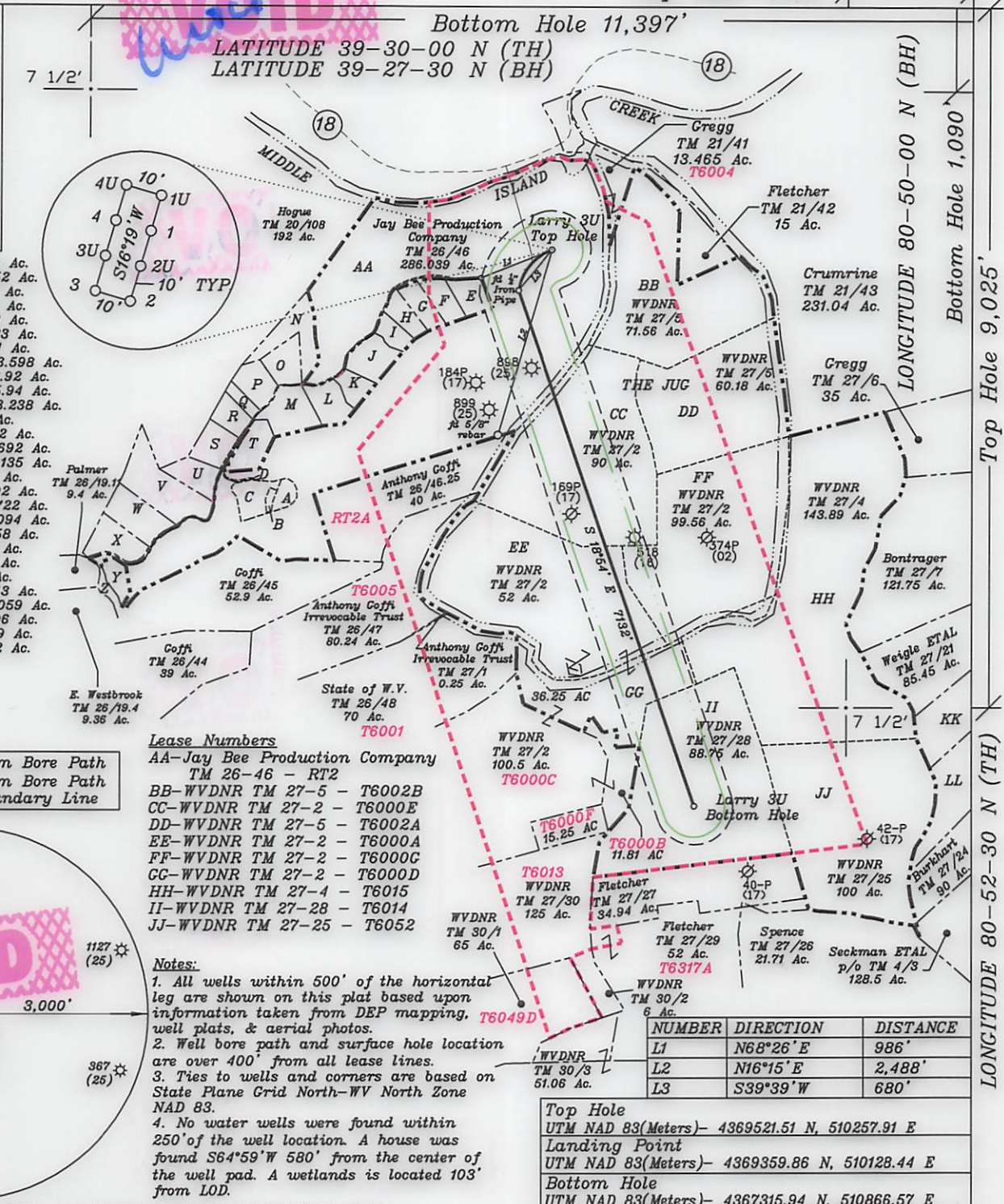
VOID

VOID





- A-Peek TM. 26-46.8 2.079 Ac.
- B-Peek TM. 26-46.20 0.652 Ac.
- C-Peek TM. 26-46.19 4.59 Ac.
- D-Peek TM. 26-46.21 0.22 Ac.
- E-Sulser TM. 20-110 4.412 Ac.
- F-Kelly TM. 26-46.18 4.323 Ac.
- G-Kelly TM. 26-46.17 4.114 Ac.
- H-Johnson TM. 26-46.23 3.598 Ac.
- I-Johnson TM. 26-46.22 2.92 Ac.
- J-Holiday TM. 26-46.13 5.94 Ac.
- K-Holiday TM. 26-46.12 3.238 Ac.
- L-Kanz TM. 26-46.3 5.4 Ac.
- M-Patera TM. 26-46.7 7.32 Ac.
- N-JayBee TM. 26-46.14 8.692 Ac.
- O-Pittman TM. 26-46.2 5.135 Ac.
- P-Johnson TM. 26-46.9 5 Ac.
- Q-Patera TM. 26-46.6 1.702 Ac.
- R-Patera TM. 26-46.15 3.722 Ac.
- S-JayBee TM. 26-46.16 5.094 Ac.
- T-Shrader TM. 26-46.1 5.58 Ac.
- U-Ison TM. 26-46.10 4.98 Ac.
- V-Doty TM. 26-46.5 13.14 Ac.
- W-Kanz TM. 26-46.4 8.1 Ac.
- X-Walton TM. 26-46.11 6.43 Ac.
- Y-JayBee TM. 26-46.24 3.059 Ac.
- Z-JayBee TM. 26-19.9 1.496 Ac.
- KK-Weigle TM. 27-22 60.19 Ac.
- LL-Weigle TM. 27-23 61.62 Ac.



- Lease Numbers**
- AA-Jay Bee Production Company TM 26-46 - RT2
 - BB-WVDNR TM 27-5 - T6002B
 - CC-WVDNR TM 27-2 - T6000E
 - DD-WVDNR TM 27-5 - T6002A
 - EE-WVDNR TM 27-2 - T6000A
 - FF-WVDNR TM 27-2 - T6000C
 - GG-WVDNR TM 27-2 - T6000D
 - HH-WVDNR TM 27-4 - T6015
 - II-WVDNR TM 27-28 - T6014
 - JJ-WVDNR TM 27-25 - T6052

Notes:

1. All wells within 500' of the horizontal leg are shown on this plat based upon information taken from DEP mapping, well plats, & aerial photos.
2. Well bore path and surface hole location are over 400' from all lease lines.
3. Ties to wells and corners are based on State Plane Grid North-WV North Zone NAD 83.
4. No water wells were found within 250' of the well location. A house was found S64°59'W 580' from the center of the well pad. A wetlands is located 103' from LOD.

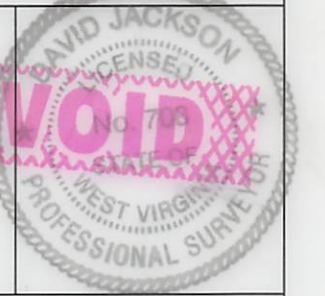
NUMBER	DIRECTION	DISTANCE
L1	N68°26'E	986'
L2	N16°15'E	2,488'
L3	S39°39'W	680'

Top Hole
UTM NAD 83(Meters)- 4369521.51 N, 510257.91 E
Landing Point
UTM NAD 83(Meters)- 4369359.86 N, 510128.44 E
Bottom Hole
UTM NAD 83(Meters)- 4367315.94 N, 510866.57 E

FILE NO. _____
DRAWING NO. 1
SCALE 1" = 2000'
MINIMUM DEGREE OF ACCURACY 1 in 200
PROVEN SOURCE OF ELEVATION GPS
submeter unit

I THE UNDERSIGNED, HEREBY CERTIFY THAT THIS PLAT IS CORRECT TO THE BEST OF MY KNOWLEDGE AND BELIEF AND SHOWS ALL THE INFORMATION REQUIRED BY LAW AND THE RULES ISSUED AND PRESCRIBED BY THE DEPARTMENT OF ENVIRONMENTAL PROTECTION.

(SIGNED) David L. Jackson
R.P.E. _____ L.L.S. 708



STATE OF WEST VIRGINIA
Division of Environmental Protection
OFFICE OF OIL AND GAS

DATE December 1, 2015
OPERATOR'S WELL NO. Larry 3U
API WELL NO. _____

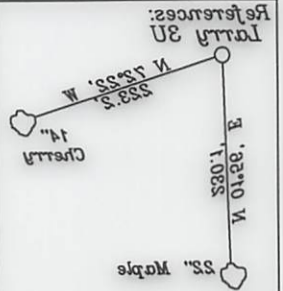
WELL TYPE: OIL GAS LIQUID INJECTION X WASTE DISPOSAL _____
(IF "GAS") PRODUCTION X STORAGE _____ DEEP X SHALLOW _____
LOCATION: ELEVATION 739.4' WATER SHED Middle Island Creek
DISTRICT Ellsworth COUNTY Tyler
QUADRANGLE Middlebourne 7 1/2' (TH), Shirley 7 1/2' (BH)

SURFACE OWNER Jay Bee Production Company ACREAGE 286.03 ac.
OIL & GAS ROYALTY OWNER Ridgetop Capital LP, and Ridgetop Capital II, LP LEASE ACREAGE 286.03 ac.
LEASE NO. RT2

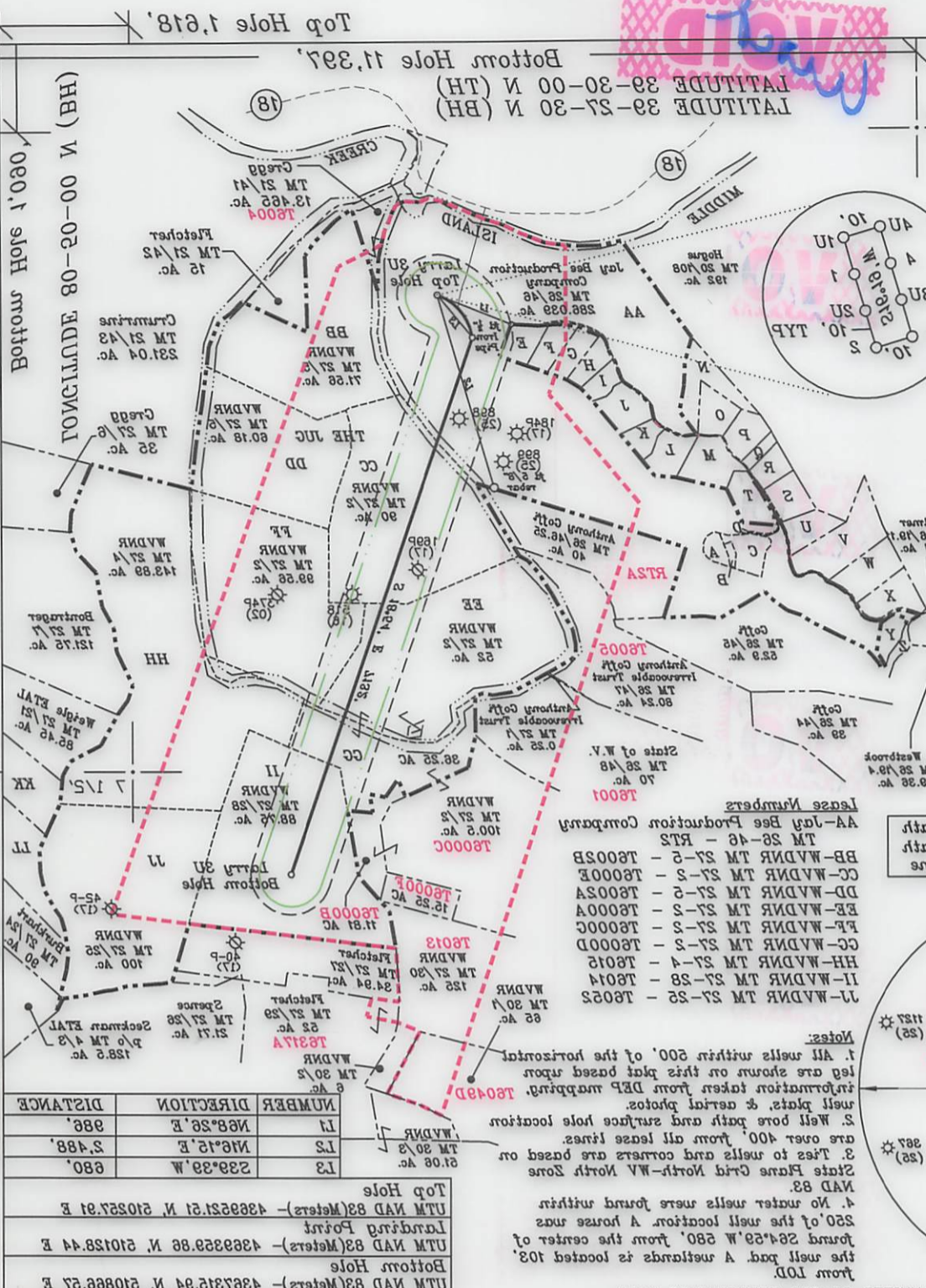
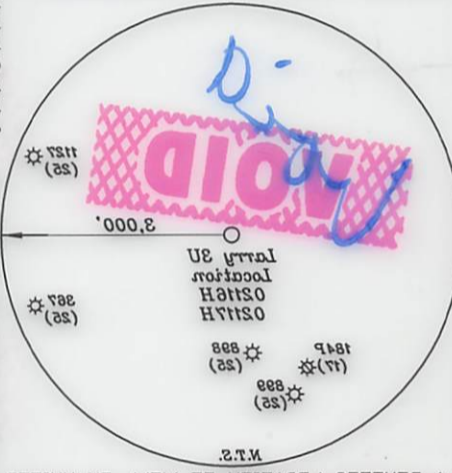
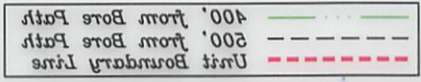
PROPOSED WORK: DRILL X CONVERT _____ DRILL DEEPER _____ REDRILL _____ FRACTURE OR STIMULATE X PLUG OFF OLD FORMATION _____ PERFORATE NEW FORMATION X OTHER PHYSICAL CHANGE IN WELL (SPECIFY) _____

PLUG AND ABANDON _____ CLEAN OUT AND REPLUG _____
TARGET FORMATION Utica ESTIMATED DEPTH TVD = 10,615'; TMD = 18,247'
WELL OPERATOR Jay-Bee Oil & Gas, Inc. DESIGNATED AGENT Randy Broda
ADDRESS 1720 Route 22 E, Union, NJ 07083 ADDRESS 3570 Shields Hill Rd., Cairo, WV 26337

07/01/2016



- 1-L-Weigle TM 27-23 61.82 Ac.
- 2-Jaybee TM 28-48 16.504 Ac.
- 3-Patterson TM 28-48 2.125 Ac.
- 4-W-Walton TM 28-48 11.613 Ac.
- 5-Jaybee TM 28-48 2.3059 Ac.
- 6-Patterson TM 28-48 2.125 Ac.
- 7-W-Walton TM 28-48 11.613 Ac.
- 8-Jaybee TM 28-48 2.3059 Ac.
- 9-Patterson TM 28-48 2.125 Ac.
- 10-W-Walton TM 28-48 11.613 Ac.
- 11-Jaybee TM 28-48 2.3059 Ac.
- 12-Patterson TM 28-48 2.125 Ac.
- 13-W-Walton TM 28-48 11.613 Ac.
- 14-Jaybee TM 28-48 2.3059 Ac.
- 15-Patterson TM 28-48 2.125 Ac.
- 16-W-Walton TM 28-48 11.613 Ac.
- 17-Jaybee TM 28-48 2.3059 Ac.
- 18-Patterson TM 28-48 2.125 Ac.
- 19-W-Walton TM 28-48 11.613 Ac.
- 20-Jaybee TM 28-48 2.3059 Ac.
- 21-Patterson TM 28-48 2.125 Ac.
- 22-W-Walton TM 28-48 11.613 Ac.
- 23-Jaybee TM 28-48 2.3059 Ac.
- 24-Patterson TM 28-48 2.125 Ac.
- 25-W-Walton TM 28-48 11.613 Ac.
- 26-Jaybee TM 28-48 2.3059 Ac.
- 27-Patterson TM 28-48 2.125 Ac.
- 28-W-Walton TM 28-48 11.613 Ac.
- 29-Jaybee TM 28-48 2.3059 Ac.
- 30-Patterson TM 28-48 2.125 Ac.
- 31-W-Walton TM 28-48 11.613 Ac.
- 32-Jaybee TM 28-48 2.3059 Ac.
- 33-Patterson TM 28-48 2.125 Ac.
- 34-W-Walton TM 28-48 11.613 Ac.
- 35-Jaybee TM 28-48 2.3059 Ac.
- 36-Patterson TM 28-48 2.125 Ac.
- 37-W-Walton TM 28-48 11.613 Ac.
- 38-Jaybee TM 28-48 2.3059 Ac.
- 39-Patterson TM 28-48 2.125 Ac.
- 40-W-Walton TM 28-48 11.613 Ac.
- 41-Jaybee TM 28-48 2.3059 Ac.
- 42-Patterson TM 28-48 2.125 Ac.
- 43-W-Walton TM 28-48 11.613 Ac.
- 44-Jaybee TM 28-48 2.3059 Ac.
- 45-Patterson TM 28-48 2.125 Ac.
- 46-W-Walton TM 28-48 11.613 Ac.
- 47-Jaybee TM 28-48 2.3059 Ac.
- 48-Patterson TM 28-48 2.125 Ac.
- 49-W-Walton TM 28-48 11.613 Ac.
- 50-Jaybee TM 28-48 2.3059 Ac.
- 51-Patterson TM 28-48 2.125 Ac.
- 52-W-Walton TM 28-48 11.613 Ac.
- 53-Jaybee TM 28-48 2.3059 Ac.
- 54-Patterson TM 28-48 2.125 Ac.
- 55-W-Walton TM 28-48 11.613 Ac.
- 56-Jaybee TM 28-48 2.3059 Ac.
- 57-Patterson TM 28-48 2.125 Ac.
- 58-W-Walton TM 28-48 11.613 Ac.
- 59-Jaybee TM 28-48 2.3059 Ac.
- 60-Patterson TM 28-48 2.125 Ac.
- 61-W-Walton TM 28-48 11.613 Ac.
- 62-Jaybee TM 28-48 2.3059 Ac.
- 63-Patterson TM 28-48 2.125 Ac.
- 64-W-Walton TM 28-48 11.613 Ac.
- 65-Jaybee TM 28-48 2.3059 Ac.
- 66-Patterson TM 28-48 2.125 Ac.
- 67-W-Walton TM 28-48 11.613 Ac.
- 68-Jaybee TM 28-48 2.3059 Ac.
- 69-Patterson TM 28-48 2.125 Ac.
- 70-W-Walton TM 28-48 11.613 Ac.
- 71-Jaybee TM 28-48 2.3059 Ac.
- 72-Patterson TM 28-48 2.125 Ac.
- 73-W-Walton TM 28-48 11.613 Ac.
- 74-Jaybee TM 28-48 2.3059 Ac.
- 75-Patterson TM 28-48 2.125 Ac.
- 76-W-Walton TM 28-48 11.613 Ac.
- 77-Jaybee TM 28-48 2.3059 Ac.
- 78-Patterson TM 28-48 2.125 Ac.
- 79-W-Walton TM 28-48 11.613 Ac.
- 80-Jaybee TM 28-48 2.3059 Ac.
- 81-Patterson TM 28-48 2.125 Ac.
- 82-W-Walton TM 28-48 11.613 Ac.
- 83-Jaybee TM 28-48 2.3059 Ac.
- 84-Patterson TM 28-48 2.125 Ac.
- 85-W-Walton TM 28-48 11.613 Ac.
- 86-Jaybee TM 28-48 2.3059 Ac.
- 87-Patterson TM 28-48 2.125 Ac.
- 88-W-Walton TM 28-48 11.613 Ac.
- 89-Jaybee TM 28-48 2.3059 Ac.
- 90-Patterson TM 28-48 2.125 Ac.
- 91-W-Walton TM 28-48 11.613 Ac.
- 92-Jaybee TM 28-48 2.3059 Ac.
- 93-Patterson TM 28-48 2.125 Ac.
- 94-W-Walton TM 28-48 11.613 Ac.
- 95-Jaybee TM 28-48 2.3059 Ac.
- 96-Patterson TM 28-48 2.125 Ac.
- 97-W-Walton TM 28-48 11.613 Ac.
- 98-Jaybee TM 28-48 2.3059 Ac.
- 99-Patterson TM 28-48 2.125 Ac.
- 100-W-Walton TM 28-48 11.613 Ac.



I THE UNDERSIGNED, HEREBY CERTIFY THAT THIS PLAT IS CORRECT TO THE BEST OF MY KNOWLEDGE AND BELIEF AND SHOWS ALL THE INFORMATION REQUIRED BY LAW AND THE RULES ISSUED AND PRESCRIBED BY THE DEPARTMENT OF ENVIRONMENTAL PROTECTION.

(SIGNED) David Jackson
L.L. 2, 708 R.P.E.

STATE OF WEST VIRGINIA
Division of Environmental Protection
OFFICE OF OIL AND GAS

FILE NO. _____
DRAWING NO. 1
SCALE 1" = 2000'
MINIMUM DEGREE OF ACCURACY 1 in 200
PROVEN SOURCE OF ELEVATION GPS
SUBMETER UNIT

WELL TYPE: OIL GAS X LIQUID INJECTION WASTE DISPOSAL
(IF GAS) PRODUCTION X STORAGE DEEP X SHALLOW
LOCATION: ELEVATION 739.4' WATER SHED Middle Island Creek
DISTRICT Ellsworth
QUADRANGLE Middlebourne 7 1/2' (TH), Shirley 7 1/2' (BH)
SURFACE OWNER Jay Bee Production Company
OIL & GAS ROYALTY OWNER Ridgtop Capital LP and Ridgtop Capital II LP LEASE ACREAGE 286.03 ac.
LEASE NO. RT5
PROPOSED WORK: DRILL X CONVERT X DEEPER REDRILL FRACTURE OR STIMULATE X PLUG OFF OLD FORMATION PERFORATE NEW FORMATION X OTHER PHYSICAL CHANGE IN WELL (SPECIFY)
DESIGNATED AGENT Randy Broda
WELL OPERATOR Jay-Bee Oil & Gas, Inc.
ADDRESS 2720 Route 22 E, Union, NJ 07083
ADDRESS 3570 Shields Hill Rd., Carro, WV 26337
TARGET FORMATION Utica
PLUG AND ABANDON CLEAN OUT AND REPLUG
ESTIMATED DEPTH TVD = 10,615'; TMD = 18,247'
DATE December 1, 2015
OPERATOR'S WELL NO. Larry 3U
API WELL NO. 47-092-092
STATE COUNTY PERMIT

