



# ANTERO RESOURCES CORPORATION

Location: Tyler County, WV  
 Slot: Slot #04  
 Field: Tyler  
 Well: Dean Unit 1H  
 Facility: Weigle East Pad  
 Wellbore: Dean Unit 1H PWB



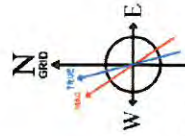
Photoreference wellbore is Dean Unit 1H PWB Rev-A.0  
 True vertical depths are referenced to PD 525 (RKB)  
 Measured depths are referenced to PD 525 (RKB)  
 North reference: Grid north  
 Scale: True distance  
 PD 525 (RKB) to Mean Sea Level: 831 feet  
 Mean Sea Level to Mud line (At Slot Slot #04): -812 feet  
 Coordinates are in feet referenced to Slot  
 Created by: edharner on 2016/06/16  
 Database: WA\_MPL\_EAST/ERRES\_Dash

Location Information		
Facility Name	Grid East (US ft)	Grid North (US ft)
Weigle East Pad	1661952.790	14331721.120
Slot	Local E (ft)	Local N (ft)
Slot #04	18.83	-7.28
Dean Unit 1H	1661945.510	14331739.840
Comment	Dean Unit 1H	19ft
PD 525 (RKB) to Mud line (At Slot Slot #04)		-812ft
Mean Sea Level to Mud line (At Slot Slot #04)		831ft

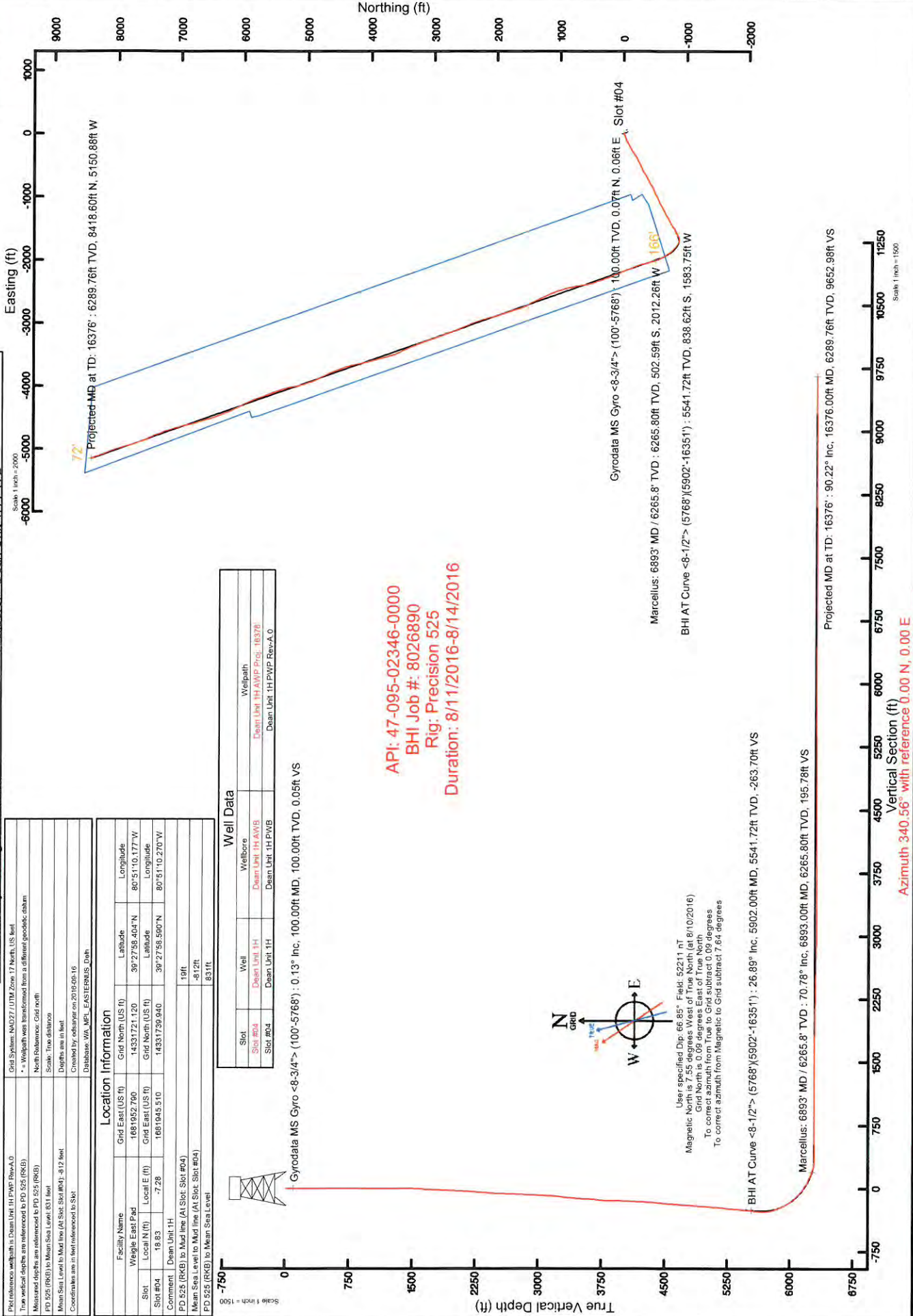
Well Data		
Slot	Well	Wellpath
Slot #04	Dean Unit 1H AWB	Dean Unit 1H AWP Proj: 16376
Dean Unit 1H	Dean Unit 1H PWB	Dean Unit 1H PWP Rev-A.0

Gyrodata MS Gyro <8-3/4"> (100'-5768') : 0.13° inc., 100.00ft MD, 100.00ft TVD, 0.05ft VS

API: 47-095-02346-0000  
 BHI Job #: 8026890  
 Rig: Precision 525  
 Duration: 8/11/2016-8/14/2016



User specified Dip: 66.85° Field: 52211 nT  
 Magnetic North is 7.25 degrees West of True North (at 8/10/2016)  
 To correct azimuth from True to Grid subtract 0.09 degrees  
 To correct azimuth from Magnetic to Grid subtract 7.64 degrees





# Actual Wellpath Report

Dean Unit 1H AWP Proj: 16376'

Page 1 of 10



## REFERENCE WELLPATH IDENTIFICATION

Operator	ANTERO RESOURCES CORPORATION	Slot	Slot #04
Area	Tyler County, WV	Well	Dean Unit 1H
Field	Tyler	Wellbore	Dean Unit 1H AWB
Facility	Weigle East Pad		

## REPORT SETUP INFORMATION

Projection System	NAD27 / UTM Zone 17 North, US feet	Software System	WellArchitect@ 5.0
North Reference	Grid	User	Edsaryar
Scale	0.999602	Report Generated	9/16/2016 at 1:10:53 PM
Convergence at slot	0.10° East	Database/Source file	WA_MPL_EASTERNUS_Defn/Dean_Unit_1H_AWP_Proj_16376_.xml

## WELLPATH LOCATION

	Local coordinates		Grid coordinates		Geographic coordinates	
	North[ft]	East[ft]	Easting[US ft]	Northing[US ft]	Latitude	Longitude
Slot Location	18.83	-7.28	1681945.51	14331739.94	39°27'58.590"N	80°51'10.270"W
Facility Reference Pt			1681952.79	14331721.12	39°27'58.404"N	80°51'10.177"W
Field Reference Pt			0.00	0.00	0°00'00.000"	85°29'19.301"W

## WELLPATH DATUM

Calculation method	Minimum curvature	PD 525 (RKB) to Facility Vertical Datum	19.00ft
Horizontal Reference Pt	Slot	PD 525 (RKB) to Mean Sea Level	831.00ft
Vertical Reference Pt	PD 525 (RKB)	PD 525 (RKB) to Mud Line at Slot (Slot #04)	19.00ft
MD Reference Pt	PD 525 (RKB)	Section Origin	N 0.00, E 0.00 ft
Field Vertical Reference	Mean Sea Level	Section Azimuth	340.56°



# Actual Wellpath Report

Dean Unit 1H AWP Proj: 16376'  
Page 2 of 10



## REFERENCE WELLPATH IDENTIFICATION

Operator	ANTERO RESOURCES CORPORATION	Slot	Slot #04
Area	Tyler County, WV	Well	Dean Unit 1H
Field	Tyler	Wellbore	Dean Unit 1H AWB
Facility	Weigle East Pad		

## WELLPATH DATA (196 stations) + = interpolated/extrapolated station

MD (ft)	Inclination (°)	Azimuth (°)	TVD (ft)	Vert Sect (ft)	North (ft)	East (ft)	Grid East (US ft)	Grid North (US ft)	Latitude	Longitude	Closure Dist (ft)	Closure Dir (°)	DLS (ft/100ft)	Build Rate (ft/100ft)	Turn Rate (°/100ft)	Comments
0.00	0.00	39.600	0.00	0.00	0.00	0.00	1681945.51	14331739.94	39°27'58.590"N	80°51'10.270"W	0.00	0.000	0.00	0.00	0.00	
19.00	0.00	39.600	19.00	0.00	0.00	0.00	1681945.51	14331739.94	39°27'58.590"N	80°51'10.270"W	0.00	0.000	0.00	0.00	0.00	
100.00	0.130	39.600	100.00	0.05	0.07	0.06	1681945.57	14331740.01	39°27'58.591"N	80°51'10.269"W	0.09	39.600	0.16	0.16	48.89	Gyrodatta MS Gyro <-8.3/4"> (100'-57'68')
200.00	0.150	42.700	200.00	0.17	0.25	0.22	1681945.73	14331740.19	39°27'58.592"N	80°51'10.267"W	0.34	40.807	0.02	0.02	3.10	
300.00	0.140	82.830	300.00	0.20	0.37	0.43	1681945.94	14331740.31	39°27'58.594"N	80°51'10.264"W	0.56	49.584	0.10	-0.01	40.13	
400.00	0.100	129.950	400.00	0.10	0.33	0.62	1681946.13	14331740.26	39°27'58.593"N	80°51'10.262"W	0.70	62.246	0.10	-0.04	47.12	
500.00	0.130	122.810	500.00	-0.06	0.21	0.78	1681946.29	14331740.15	39°27'58.592"N	80°51'10.260"W	0.81	75.098	0.03	0.03	-7.14	
600.00	0.230	29.490	600.00	-0.02	0.32	0.97	1681946.48	14331740.26	39°27'58.593"N	80°51'10.258"W	1.03	71.772	0.27	0.10	-93.32	
700.00	0.200	27.220	700.00	0.23	0.65	1.15	1681946.66	14331740.59	39°27'58.596"N	80°51'10.255"W	1.32	60.557	0.03	-0.03	-2.27	
800.00	1.860	252.960	799.98	0.42	0.33	-0.32	1681945.19	14331740.27	39°27'58.593"N	80°51'10.274"W	0.46	315.987	2.00	1.66	-134.26	
900.00	5.040	247.850	899.79	0.28	-1.80	-5.94	1681939.57	14331738.14	39°27'58.572"N	80°51'10.346"W	6.21	253.126	3.19	3.18	-5.11	
1000.00	7.910	244.840	999.14	-0.62	-6.38	-16.24	1681929.28	14331733.56	39°27'58.527"N	80°51'10.477"W	17.45	248.538	2.89	2.87	-3.01	
1100.00	10.570	248.450	1097.83	-1.64	-12.68	-31.00	1681914.52	14331727.27	39°27'58.465"N	80°51'10.666"W	33.49	247.754	2.72	2.66	3.61	
1200.00	11.640	252.660	1195.96	-1.61	-19.06	-49.16	1681896.37	14331720.89	39°27'58.402"N	80°51'10.897"W	52.73	248.813	1.34	1.07	4.21	
1300.00	12.390	252.370	1293.77	-0.90	-25.31	-69.02	1681876.52	14331714.64	39°27'58.341"N	80°51'11.150"W	73.51	249.859	0.75	0.75	-0.29	
1400.00	12.540	249.610	1391.41	-0.74	-32.34	-89.42	1681856.13	14331707.61	39°27'58.272"N	80°51'11.411"W	95.09	250.114	0.61	0.15	-2.76	
1500.00	12.410	241.850	1489.06	-2.55	-41.20	-109.07	1681836.49	14331698.76	39°27'58.185"N	80°51'11.661"W	116.59	249.308	1.68	-0.13	-7.76	
1600.00	11.540	237.550	1586.88	-6.43	-51.63	-126.98	1681818.58	14331688.33	39°27'58.082"N	80°51'11.890"W	137.08	247.873	1.25	-0.87	-4.30	
1700.00	14.460	240.320	1684.31	-10.90	-63.18	-146.28	1681799.29	14331676.78	39°27'57.968"N	80°51'12.136"W	159.34	246.638	2.98	2.92	2.77	
1800.00	21.430	244.370	1779.39	-15.09	-77.29	-173.63	1681771.95	14331662.68	39°27'57.829"N	80°51'12.485"W	190.05	246.005	7.08	6.97	4.05	
1900.00	22.010	242.800	1872.29	-19.59	-93.75	-206.77	1681738.83	14331646.22	39°27'57.667"N	80°51'12.908"W	227.03	245.609	0.82	0.58	-1.57	
2000.00	21.470	240.810	1965.18	-25.22	-111.25	-239.41	1681706.20	14331628.74	39°27'57.494"N	80°51'13.325"W	263.99	245.077	0.91	-0.54	-1.99	
2100.00	15.810	239.420	2059.90	-30.96	-127.11	-267.14	1681678.48	14331612.88	39°27'57.338"N	80°51'13.679"W	295.84	244.553	5.68	-5.66	-1.39	
2200.00	13.830	237.280	2156.57	-36.34	-140.51	-288.92	1681656.70	14331599.49	39°27'57.206"N	80°51'13.967"W	321.28	244.066	2.05	-1.98	-2.14	
2300.00	16.950	236.650	2252.97	-42.59	-154.98	-311.16	1681634.47	14331585.02	39°27'57.063"N	80°51'14.241"W	347.62	243.523	3.12	3.12	-0.63	
2400.00	15.800	234.680	2348.91	-49.82	-170.87	-334.45	1681611.20	14331569.14	39°27'56.907"N	80°51'14.538"W	375.57	242.937	1.28	-1.15	-1.97	
2500.00	14.790	238.030	2445.37	-56.31	-185.50	-356.38	1681589.27	14331554.52	39°27'56.762"N	80°51'14.818"W	401.77	242.503	1.34	-1.01	3.35	
2600.00	13.040	240.500	2542.43	-61.05	-197.81	-377.03	1681568.63	14331542.21	39°27'56.641"N	80°51'15.081"W	425.77	242.316	1.85	-1.75	2.47	
2700.00	15.050	242.690	2639.44	-64.80	-209.33	-398.39	1681547.28	14331530.70	39°27'56.528"N	80°51'15.354"W	450.03	242.281	2.08	2.01	2.19	
2800.00	17.420	241.450	2735.45	-68.95	-222.44	-423.08	1681522.60	14331517.59	39°27'56.398"N	80°51'15.669"W	477.99	242.266	2.40	2.37	-1.24	



# Actual Wellpath Report

Dean Unit 1H AWP Proj: 16376'  
Page 3 of 10



## REFERENCE WELLPATH IDENTIFICATION

Operator	ANTERO RESOURCES CORPORATION	Slot	Slot #04
Area	Tyler County, WV	Well	Dean Unit 1H
Field	Tyler	Wellbore	Dean Unit 1H AWB
Facility	Weigle East Pad		

## WELLPATH DATA (196 stations)

MD (ft)	Inclination (°)	Azimuth (°)	TVD (ft)	Vert Sect (ft)	North (ft)	East (ft)	Grid East (US ft)	Grid North (US ft)	Latitude	Longitude	Closure Dist (ft)	Closure Dir (°)	DLS (1/100ft)	Build Rate (1/100ft)	Turn Rate (1/100ft)	Comments
2900.00	19.790	244.860	2830.22	-73.00	-236.79	-451.56	1681494.14	14331503.25	39°27'56.257"N	80°51'16.032"W	509.87	242.328	2.61	2.37	3.41	
3000.00	22.930	245.350	2923.34	-76.45	-252.11	-484.59	1681461.11	14331487.93	39°27'56.106"N	80°51'16.454"W	546.25	242.515	3.15	3.14	0.49	
3100.00	25.250	244.110	3014.62	-80.62	-269.55	-521.49	1681424.23	14331470.50	39°27'55.934"N	80°51'16.925"W	587.04	242.667	2.37	2.32	-1.24	
3200.00	27.310	246.210	3104.28	-84.75	-288.12	-561.68	1681384.06	14331451.94	39°27'55.751"N	80°51'17.438"W	631.26	242.844	2.26	2.06	2.10	
3300.00	28.370	239.540	3192.73	-91.04	-309.42	-603.16	1681342.59	14331430.64	39°27'55.541"N	80°51'17.967"W	677.89	242.842	3.29	1.06	-6.67	
3400.00	28.950	236.780	3280.48	-101.34	-334.73	-643.89	1681301.88	14331405.35	39°27'55.292"N	80°51'18.487"W	725.69	242.632	1.45	0.58	-2.76	
3500.00	27.480	240.880	3368.60	-110.99	-359.22	-684.29	1681261.49	14331380.87	39°27'55.051"N	80°51'19.002"W	772.85	242.303	2.43	-1.47	4.10	
3600.00	25.900	239.930	3457.95	-118.90	-381.39	-723.35	1681222.45	14331358.70	39°27'54.832"N	80°51'19.501"W	817.74	242.200	1.64	-1.58	-0.95	
3700.00	25.540	245.400	3548.05	-124.87	-401.31	-761.86	1681183.95	14331338.79	39°27'54.636"N	80°51'19.992"W	861.09	242.222	2.40	-0.36	5.47	
3800.00	25.390	241.780	3638.34	-130.08	-420.42	-800.35	1681145.48	14331319.69	39°27'54.448"N	80°51'20.484"W	904.06	242.287	1.56	-0.15	-3.62	
3900.00	25.020	234.950	3728.84	-139.04	-442.71	-836.56	1681109.28	14331297.41	39°27'54.228"N	80°51'20.946"W	946.48	242.112	2.93	-0.37	-6.83	
4000.00	23.920	244.790	3819.89	-146.78	-463.50	-872.23	1681073.62	14331276.63	39°27'54.023"N	80°51'21.401"W	987.74	242.014	4.22	-1.10	9.84	
4100.00	24.950	253.340	3910.97	-147.79	-478.18	-910.80	1681035.08	14331261.95	39°27'53.878"N	80°51'21.893"W	1028.69	242.300	3.68	1.03	8.55	
4200.00	24.360	244.950	4001.88	-148.78	-492.97	-949.70	1680996.19	14331247.17	39°27'53.733"N	80°51'22.389"W	1070.02	242.567	3.55	-0.59	-8.39	
4300.00	24.100	240.440	4093.07	-154.39	-511.77	-986.14	1680959.76	14331228.37	39°27'53.548"N	80°51'22.854"W	1111.03	242.572	1.87	-0.26	-4.51	
4400.00	25.290	244.680	4183.93	-160.17	-530.98	-1023.22	1680922.70	14331209.17	39°27'53.358"N	80°51'23.327"W	1152.78	242.574	2.13	1.19	4.24	
4500.00	25.970	247.390	4274.10	-163.56	-548.54	-1062.74	1680883.20	14331191.62	39°27'53.185"N	80°51'23.832"W	1195.95	242.699	1.36	0.68	2.71	
4600.00	27.980	243.750	4363.22	-167.56	-567.33	-1104.00	1680841.96	14331172.84	39°27'53.000"N	80°51'24.358"W	1241.24	242.802	2.60	2.01	-3.64	
4700.00	26.430	237.110	4452.18	-175.52	-589.80	-1143.73	1680802.23	14331150.38	39°27'52.779"N	80°51'24.865"W	1286.85	242.721	3.41	-1.55	-6.64	
4800.00	25.600	241.080	4542.05	-184.25	-612.33	-1181.34	1680764.65	14331127.85	39°27'52.557"N	80°51'25.345"W	1330.60	242.600	1.93	-0.83	3.97	
4900.00	27.190	244.680	4631.63	-190.15	-632.56	-1220.90	1680725.09	14331107.64	39°27'52.358"N	80°51'25.850"W	1375.04	242.611	2.26	1.59	3.60	
5000.00	27.080	242.560	4720.62	-195.66	-652.82	-1261.76	1680684.26	14331087.39	39°27'52.158"N	80°51'26.371"W	1420.63	242.644	0.97	-0.11	-2.12	
5100.00	25.640	240.430	4810.23	-202.64	-673.98	-1300.78	1680645.25	14331066.23	39°27'51.949"N	80°51'26.869"W	1465.02	242.610	1.72	-1.44	-2.13	
5200.00	25.080	239.710	4900.59	-210.43	-695.35	-1337.90	1680608.15	14331044.87	39°27'51.739"N	80°51'27.343"W	1507.81	242.538	0.64	-0.56	-0.72	
5300.00	25.140	240.580	4991.14	-218.10	-716.47	-1374.70	1680571.36	14331023.75	39°27'51.531"N	80°51'27.813"W	1550.21	242.472	0.37	0.06	0.87	
5400.00	26.230	244.000	5081.26	-224.31	-736.60	-1413.07	1680533.01	14331003.64	39°27'51.332"N	80°51'28.302"W	1593.53	242.468	1.84	1.09	3.42	
5500.00	24.150	239.880	5171.75	-230.62	-756.55	-1450.63	1680495.46	14330983.69	39°27'51.136"N	80°51'28.782"W	1636.07	242.456	2.72	-2.08	-4.12	
5600.00	21.270	229.600	5264.03	-240.91	-778.59	-1482.16	1680463.94	14330961.66	39°27'50.918"N	80°51'29.184"W	1674.22	242.287	4.89	-2.88	-10.28	
5700.00	20.950	240.440	5357.35	-250.54	-799.17	-1511.53	1680434.58	14330941.09	39°27'50.715"N	80°51'29.559"W	1709.80	242.134	3.91	-0.32	10.84	
5768.00	23.250	243.710	5420.35	-264.28	-811.12	-1534.15	1680411.98	14330929.15	39°27'50.598"N	80°51'29.847"W	1735.37	242.134	3.83	3.38	4.81	



# Actual Wellpath Report

Dean Unit 1H AWP Proj: 16376'

Page 4 of 10



## REFERENCE WELLPATH IDENTIFICATION

Operator	ANTERO RESOURCES CORPORATION	Slot #04
Area	Tyler County, WV	Dean Unit 1H
Field	Tyler	Dean Unit 1H AWB
Facility	Weigle East Pad	

## WELLPATH DATA (196 stations) † = interpolated/extrapolated station

MD [ft]	Inclination [°]	Azimuth [°]	TVD [ft]	Vert Sect [ft]	North [ft]	East [ft]	Grid East [US ft]	Grid North [US ft]	Latitude	Longitude	Closure Dist [ft]	Closure Dir [°]	DLS ["/100ft]	Build Rate ["/100ft]	Turn Rate ["/100ft]	Comments
5902.00	26.89	238.63	5541.72	-263.70	838.62	-1583.75	1680362.39	1433090.66	39°27'50.327"N	80°51'30.481"W	1792.08	242.098	3.15	2.72	-3.79	BH/AT Curve <8-1/2"> (5768)(5902-16351')
5949.00	26.89	236.72	5583.64	-268.44	849.98	-1601.71	1680344.44	14330890.30	39°27'50.215"N	80°51'30.710"W	1813.27	242.046	1.84	0.00	-4.06	
5995.00	26.33	241.54	5624.78	-272.53	860.55	-1619.38	1680326.78	14330879.73	39°27'50.110"N	80°51'30.935"W	1833.83	242.013	4.85	-1.22	10.48	
6043.00	25.40	248.62	5667.98	-274.55	869.38	-1638.33	1680307.83	14330870.91	39°27'50.023"N	80°51'31.177"W	1854.71	242.047	6.72	-1.94	14.75	
6085.00	24.74	256.85	5706.03	-273.89	874.67	-1655.28	1680290.89	14330865.62	39°27'49.971"N	80°51'31.393"W	1872.16	242.148	8.44	-1.57	19.60	
6130.00	25.84	267.43	5746.74	-270.01	877.25	-1674.26	1680271.92	14330863.04	39°27'49.946"N	80°51'31.635"W	1890.16	242.347	10.32	2.44	23.51	
6175.00	27.25	278.54	5787.02	-262.33	876.16	-1694.26	1680251.93	14330864.13	39°27'49.957"N	80°51'31.890"W	1907.40	242.655	11.45	3.13	24.69	
6220.00	28.75	282.66	5826.77	-251.11	871.52	-1714.82	1680231.38	14330868.73	39°27'50.003"N	80°51'32.152"W	1923.58	243.059	9.12	3.33	18.11	
6265.00	29.87	293.51	5866.02	-237.09	863.94	-1735.47	1680210.74	14330876.35	39°27'50.079"N	80°51'32.415"W	1938.62	243.535	7.82	2.49	15.16	
6310.00	30.92	299.06	5904.84	-220.79	853.85	-1755.86	1680190.36	14330886.43	39°27'50.179"N	80°51'32.675"W	1952.46	244.067	6.66	2.33	12.33	
6352.00†	33.87	305.41	5940.79	-203.13	841.82	-1774.84	1680171.38	14330898.46	39°27'50.298"N	80°51'32.917"W	1964.36	244.625	10.73	7.04	15.13	Sycamore: 6352' MD / 5940.3' TVD
6355.00	34.10	305.83	5942.79	-201.75	840.84	-1776.20	1680170.02	14330899.43	39°27'50.308"N	80°51'32.934"W	1965.17	244.667	10.73	7.43	13.85	
6399.00	36.76	309.18	5978.65	-180.37	825.30	-1796.41	1680149.82	14330914.97	39°27'50.462"N	80°51'33.192"W	1976.92	245.325	7.48	6.05	7.61	
6444.00	39.61	311.27	6014.02	-156.36	807.33	-1817.64	1680128.60	14330932.94	39°27'50.640"N	80°51'33.462"W	1988.86	246.051	6.95	6.33	4.64	
6488.00	42.63	314.30	6047.16	-130.75	787.66	-1838.85	1680107.40	14330952.59	39°27'50.834"N	80°51'33.732"W	2000.44	246.812	8.22	6.86	6.89	
6531.00	45.85	319.22	6077.97	-103.31	765.80	-1859.36	1680086.90	14330974.45	39°27'51.051"N	80°51'33.993"W	2010.89	247.615	10.94	7.49	11.44	
6578.00	48.68	322.67	6109.87	-70.80	738.99	-1881.08	1680065.18	14331001.25	39°27'51.316"N	80°51'34.270"W	2021.03	248.553	8.08	6.02	7.34	
6581.00†	48.88	322.82	6111.85	-68.65	737.19	-1882.45	1680063.81	14331003.04	39°27'51.334"N	80°51'34.287"W	2021.65	248.614	7.98	6.95	5.20	Middlesex: 6581' MD / 6111.9' TVD
6623.00	51.83	324.91	6138.64	-37.67	711.07	-1901.51	1680044.77	14331029.16	39°27'51.592"N	80°51'34.529"W	2030.11	249.497	7.98	7.00	4.96	
6666.00	55.19	327.23	6164.21	-4.21	682.38	-1920.78	1680025.49	14331057.83	39°27'51.876"N	80°51'34.775"W	2038.40	250.442	8.94	7.81	5.40	
6712.00	58.37	329.22	6189.41	33.38	649.67	-1941.03	1680005.25	14331090.53	39°27'52.200"N	80°51'35.032"W	2046.87	251.495	7.80	6.91	4.33	
6743.00†	60.64	330.27	6205.14	59.62	626.59	-1954.49	1679991.80	14331113.60	39°27'52.428"N	80°51'35.203"W	2052.47	252.225	7.90	7.34	3.40	Burkett: 6743' MD / 6205.1' TVD
6756.00	61.60	330.70	6211.42	70.83	616.69	-1960.10	1679986.20	14331123.50	39°27'52.526"N	80°51'35.275"W	2054.82	252.535	7.90	7.35	3.29	
6789.00†	64.32	332.98	6226.42	99.88	590.77	-1973.96	1679972.34	14331149.40	39°27'52.782"N	80°51'35.451"W	2060.47	253.338	10.31	8.26	6.93	Tully: 6789' MD / 6226.4' TVD
6802.00	65.41	333.86	6231.94	111.56	580.25	-1979.22	1679967.08	14331159.92	39°27'52.886"N	80°51'35.518"W	2062.52	253.660	10.31	8.34	6.71	
6846.00	68.12	336.89	6249.30	151.81	543.50	-1996.06	1679950.25	14331196.66	39°27'53.250"N	80°51'35.732"W	2068.73	254.768	8.83	6.16	6.89	
6893.00	70.78	339.85	6265.80	195.78	502.59	-2012.26	1679934.05	14331276.55	39°27'53.654"N	80°51'35.937"W	2074.08	255.976	8.17	5.66	6.30	Marcellus: 6893' MD / 6265.8' TVD
6936.00	74.30	342.17	6278.70	236.79	463.81	-2025.60	1679920.72	14331278.14	39°27'54.038"N	80°51'36.107"W	2078.02	257.103	9.67	8.19	5.40	
6981.00	80.32	342.70	6288.58	280.64	421.97	-2038.82	1679907.51	14331318.18	39°27'54.452"N	80°51'36.274"W	2082.03	258.307	13.44	13.38	1.33	
7026.00	85.66	342.95	6294.07	325.25	379.31	-2051.97	1679894.36	14331360.79	39°27'54.873"N	80°51'36.441"W	2086.74	259.527	11.87	11.87	0.40	



# Actual Wellpath Report

Dean Unit 1H AWP Proj: 16376'  
Page 5 of 10



## REFERENCE WELLPATH IDENTIFICATION

Operator	ANTERO RESOURCES CORPORATION	Slot #04
Area	Tyler County, WV	Dean Unit 1H
Field	Tyler	Wellbore
Facility	Weigle East Pad	Dean Unit 1H AWB

## WELLPATH DATA (196 stations)

MD (ft)	Inclination (°)	Azimuth (°)	TVD (ft)	Vert Sect (ft)	North (ft)	East (ft)	Grid East (US ft)	Grid North (US ft)	Latitude	Longitude	Closure Dist (ft)	Closure Dir (°)	DLS (ft/100ft)	Build Rate (ft/100ft)	Turn Rate (°/100ft)	Comments
7072.00	90.920	344.100	6295.44	371.16	-335.23	-2065.01	1679881.33	14331404.84	39°27'55.309"N	80°51'36.607"W	2092.04	260.779	11.70	11.43	1.43	2.50
7116.00	90.860	343.290	6294.76	415.08	-293.01	-2077.36	1679868.98	14331447.05	39°27'55.727"N	80°51'36.763"W	2097.92	261.972	1.85	-0.14	-1.84	
7206.00	91.050	339.240	6293.26	505.05	-207.80	-2106.26	1679840.10	14331532.22	39°27'56.569"N	80°51'37.430"W	2116.48	264.365	4.50	0.21	-4.50	
7286.00	90.620	338.750	6291.95	595.00	-123.79	-2138.51	1679807.85	14331616.20	39°27'57.400"N	80°51'37.540"W	2142.09	266.687	0.72	-0.48	-0.54	
7386.00	90.800	338.600	6290.83	684.96	-39.96	-2171.24	1679775.14	14331699.99	39°27'58.229"N	80°51'37.955"W	2171.61	268.946	0.26	0.20	-0.17	
7476.00	90.950	337.900	6289.46	774.86	43.62	-2204.59	1679741.81	14331783.54	39°27'59.056"N	80°51'38.379"W	2205.02	271.134	0.80	0.17	-0.78	
7565.00	89.780	337.730	6288.89	863.76	126.03	-2238.19	1679708.21	14331866.92	39°27'59.871"N	80°51'38.806"W	2241.74	273.223	1.33	-1.31	-0.19	
7655.00	90.120	338.310	6288.97	953.67	209.49	-2271.88	1679674.54	14331949.34	39°28'00.696"N	80°51'39.234"W	2281.51	275.268	0.75	0.38	0.64	
7745.00	90.060	339.130	6288.83	1043.62	293.35	-2304.54	1679641.89	14332033.17	39°28'01.525"N	80°51'39.648"W	2323.13	277.254	0.91	-0.07	0.91	
7834.00	90.150	339.550	6288.67	1132.60	376.63	-2335.94	1679610.59	14332116.41	39°28'02.349"N	80°51'40.047"W	2366.11	279.159	0.48	0.10	0.47	
7924.00	90.400	344.160	6288.23	1222.55	462.13	-2363.96	1679582.50	14332201.88	39°28'03.194"N	80°51'40.403"W	2408.71	281.061	5.13	0.28	5.12	
8013.00	89.450	346.850	6288.35	1311.21	548.28	-2386.23	1679560.23	14332288.00	39°28'04.046"N	80°51'40.685"W	2448.41	282.940	3.21	-1.07	3.02	
8103.00	89.450	348.830	6289.21	1400.48	636.26	-2405.19	1679541.28	14332375.94	39°28'04.916"N	80°51'40.925"W	2487.92	284.817	2.20	0.00	2.20	
8193.00	89.420	351.130	6290.10	1489.25	724.87	-2420.85	1679525.63	14332464.52	39°28'05.792"N	80°51'41.123"W	2527.04	286.669	2.56	-0.03	2.56	
8282.00	89.230	349.110	6291.15	1577.01	812.54	-2436.12	1679510.37	14332552.16	39°28'06.659"N	80°51'41.316"W	2568.05	288.446	2.28	-0.21	-2.27	
8372.00	90.250	345.420	6291.56	1666.37	900.31	-2455.95	1679490.54	14332639.89	39°28'07.527"N	80°51'41.567"W	2615.77	290.132	4.25	1.13	-4.10	
8462.00	89.200	342.080	6291.99	1756.22	986.70	-2481.13	1679465.37	14332726.25	39°28'08.381"N	80°51'41.887"W	2670.13	291.687	3.89	-1.17	-3.71	
8551.00	89.290	340.910	6293.16	1845.20	1071.09	-2509.38	1679437.14	14332810.60	39°28'09.215"N	80°51'42.245"W	2728.41	293.114	1.32	0.10	-1.31	
8641.00	89.290	335.540	6294.28	1935.08	1154.63	-2542.75	1679403.78	14332894.11	39°28'10.041"N	80°51'42.669"W	2792.62	294.422	5.97	0.00	-5.97	
8731.00	89.320	333.780	6295.37	2024.60	1235.96	-2581.26	1679365.28	14332975.41	39°28'10.846"N	80°51'43.158"W	2861.91	295.586	1.96	0.03	-1.96	
8820.00	89.170	333.810	6296.54	2112.97	1315.81	-2620.56	1679326.00	14333055.22	39°28'11.636"N	80°51'43.658"W	2932.35	296.662	0.17	-0.17	0.03	
8910.00	89.110	333.510	6297.89	2202.31	1396.46	-2660.49	1679286.08	14333135.84	39°28'12.433"N	80°51'44.166"W	3004.71	297.694	0.34	-0.07	0.33	
9000.00	89.200	333.940	6299.22	2291.66	1477.15	-2700.33	1679246.26	14333216.50	39°28'13.231"N	80°51'44.672"W	3077.94	298.680	0.49	0.10	-0.48	
9089.00	89.110	335.180	6300.53	2380.16	1567.51	-2738.55	1679208.05	14333296.82	39°28'14.026"N	80°51'45.158"W	3150.48	299.628	1.40	-0.10	1.39	
9179.00	89.140	341.290	6301.91	2470.03	1641.04	-2771.91	1679174.71	14333380.33	39°28'14.852"N	80°51'45.581"W	3221.25	300.627	6.79	0.03	6.79	
9269.00	89.320	343.690	6303.12	2559.97	1726.86	-2798.98	1679147.65	14333466.11	39°28'15.701"N	80°51'45.925"W	3288.82	301.673	2.67	0.20	2.67	
9358.00	89.110	341.450	6304.34	2648.90	1811.76	-2825.63	1679121.01	14333550.97	39°28'16.540"N	80°51'46.263"W	3356.59	302.667	2.53	-0.24	-2.52	
9448.00	89.080	339.690	6305.76	2738.88	1896.62	-2855.57	1679091.08	14333635.80	39°28'17.380"N	80°51'46.643"W	3428.04	303.591	1.96	-0.03	-1.96	
9537.00	89.170	341.810	6307.12	2827.87	1980.63	-2884.91	1679061.76	14333719.78	39°28'18.210"N	80°51'47.016"W	3499.37	304.471	2.38	0.10	2.38	
9627.00	89.050	344.980	6308.52	2917.73	2066.85	-2910.62	1679036.06	14333805.97	39°28'19.063"N	80°51'47.342"W	3569.82	305.379	3.52	-0.13	3.52	



# Actual Wellpath Report

Dean Unit 1H AWP Proj: 16376'

Page 6 of 10



## REFERENCE WELLPATH IDENTIFICATION

Operator	Slot	Slot #04
ANTERO RESOURCES CORPORATION	Well	Dean Unit 1H
Tyler County, WV	Wellbore	Dean Unit 1H AWB
Tyler		
Weigle East Pad		

## WELLPATH DATA (196 stations)

MD	Inclination	Azimuth	TVD	Vert.Sect	North	East	Grid East	Grid North	Latitude	Longitude	Closure Dist	Closure Dir	DLS	Build Rate	Turn Rate	Comments
(ft)	(°)	(°)	(ft)	(ft)	(ft)	(ft)	(US ft)	(US ft)			(ft)	(°)	("/100ft)	("/100ft)	(°/100ft)	
9717.00	89.510	345.090	6309.65	3007.45	2153.79	-2933.86	1679012.83	14333892.87	39°28'19.922"N	80°51'47.637"W	3639.55	306.283	0.53	0.51	0.12	
9807.00	89.320	343.880	6310.57	3097.23	2240.51	-2957.93	1678988.76	14333979.55	39°28'20.780"N	80°51'47.942"W	3710.69	307.142	1.36	-0.21	-1.34	
9896.00	89.450	338.800	6311.52	3186.19	2324.80	-2986.39	1678960.31	14334063.81	39°28'21.613"N	80°51'48.303"W	3784.60	307.899	5.71	0.15	-5.71	
9986.00	89.970	338.910	6311.98	3276.15	2408.74	-3018.86	1678927.86	14334147.71	39°28'22.443"N	80°51'48.716"W	3862.06	308.586	0.59	0.58	0.12	
10076.00	90.120	337.630	6311.91	3366.08	2492.34	-3052.18	1678894.55	14334231.28	39°28'23.270"N	80°51'49.139"W	3940.50	309.234	1.43	0.17	-1.42	
10165.00	90.580	337.800	6311.37	3454.97	2574.69	-3085.93	1678860.82	14334313.60	39°28'24.085"N	80°51'49.568"W	4018.95	309.839	0.55	0.52	0.19	
10255.00	90.250	338.180	6310.71	3544.87	2658.13	-3119.66	1678827.10	14334397.00	39°28'24.910"N	80°51'49.996"W	4098.52	310.433	0.56	-0.37	0.42	
10345.00	90.620	339.360	6310.03	3634.82	2742.02	-3152.25	1678794.52	14334480.86	39°28'25.739"N	80°51'50.410"W	4177.95	311.019	1.37	0.41	1.31	
10435.00	90.490	339.350	6309.16	3724.80	2826.23	-3183.98	1678762.81	14334565.04	39°28'26.572"N	80°51'50.813"W	4257.38	311.594	0.14	-0.14	-0.01	
10524.00	90.770	340.150	6308.18	3813.78	2909.73	-3214.78	1678732.02	14334648.50	39°28'27.398"N	80°51'51.204"W	4336.05	312.149	0.96	0.31	0.90	
10614.00	90.090	340.470	6307.50	3903.78	2994.46	-3245.10	1678701.71	14334733.20	39°28'28.236"N	80°51'51.589"W	4415.59	312.700	0.84	-0.76	0.36	
10704.00	90.180	340.300	6307.29	3993.78	3079.24	-3275.31	1678671.51	14334817.95	39°28'29.074"N	80°51'51.973"W	4495.48	313.233	0.21	0.10	-0.19	
10793.00	90.180	340.250	6307.01	4082.78	3163.01	-3305.35	1678641.48	14334901.69	39°28'29.903"N	80°51'52.354"W	4574.93	313.739	0.06	0.00	-0.06	
10883.00	89.940	338.860	6306.92	4172.76	3247.34	-3336.79	1678610.06	14334985.98	39°28'30.736"N	80°51'52.754"W	4656.11	314.222	1.57	-0.27	-1.54	
10973.00	90.120	336.880	6306.87	4262.66	3330.71	-3370.69	1678576.17	14335069.32	39°28'31.561"N	80°51'53.185"W	4738.69	314.658	2.21	0.20	-2.20	
11062.00	90.340	336.710	6306.51	4351.47	3412.51	-3405.76	1678541.11	14335151.08	39°28'32.370"N	80°51'53.630"W	4821.25	315.057	0.31	0.25	-0.19	
11152.00	89.720	333.320	6306.47	4441.03	3494.07	-3443.77	1678503.12	14335232.62	39°28'33.177"N	80°51'54.113"W	4905.92	315.415	3.83	-0.69	-3.77	
11242.00	90.280	335.500	6306.47	4530.51	3575.24	-3482.64	1678464.26	14335313.75	39°28'33.979"N	80°51'54.607"W	4991.10	315.752	2.50	0.62	2.42	
11332.00	90.000	341.800	6306.25	4620.41	3659.02	-3515.39	1678431.53	14335397.50	39°28'34.808"N	80°51'55.023"W	5074.09	316.147	7.01	-0.31	7.00	
11421.00	90.180	345.820	6306.11	4709.25	3744.47	-3540.20	1678406.73	14335482.92	39°28'35.653"N	80°51'55.338"W	5153.07	316.606	4.52	0.20	4.52	
11511.00	90.400	346.170	6305.65	4798.84	3831.80	-3561.98	1678384.96	14335570.20	39°28'36.516"N	80°51'55.614"W	5231.67	317.090	0.48	0.24	0.39	
11601.00	90.310	343.580	6305.09	4888.58	3918.67	-3585.46	1678361.49	14335657.04	39°28'37.375"N	80°51'55.912"W	5311.45	317.542	2.88	-0.10	-2.88	
11691.00	90.280	344.650	6304.63	4978.40	4005.23	-3610.09	1678336.86	14335743.57	39°28'38.231"N	80°51'56.225"W	5392.09	317.970	1.19	-0.03	1.19	
11780.00	90.180	347.010	6304.27	5067.02	4091.52	-3631.88	1678315.09	14335829.82	39°28'39.084"N	80°51'56.501"W	5470.93	318.406	2.65	-0.11	2.65	
11870.00	90.310	347.900	6303.89	5156.37	4179.37	-3651.43	1678295.55	14335917.63	39°28'39.953"N	80°51'56.748"W	5549.78	318.857	1.00	0.14	0.99	
11960.00	90.220	345.970	6303.47	5245.81	4267.03	-3671.77	1678275.21	14336005.26	39°28'40.819"N	80°51'57.006"W	5629.34	319.288	2.15	-0.10	-2.14	
12049.00	90.280	344.180	6303.08	5334.53	4353.02	-3694.69	1678252.30	14336091.22	39°28'41.670"N	80°51'57.297"W	5709.60	319.677	2.01	0.07	-2.01	
12139.00	90.460	340.820	6302.50	5424.46	4438.84	-3721.75	1678225.25	14336177.01	39°28'42.518"N	80°51'57.640"W	5792.65	320.022	3.74	0.20	-3.73	
12229.00	90.310	338.350	6301.90	5514.44	4523.18	-3753.14	1678193.87	14336261.31	39°28'43.352"N	80°51'58.039"W	5877.52	320.316	2.75	-0.17	-2.74	
12318.00	90.400	337.250	6301.35	5603.33	4605.58	-3786.77	1678160.26	14336343.68	39°28'44.167"N	80°51'58.466"W	5962.47	320.573	1.24	0.10	-1.24	



# Actual Wellpath Report

Dean Unit 1H AWP Proj: 16376'  
Page 7 of 10



## REFERENCE WELLPATH IDENTIFICATION

Operator	ANTERO RESOURCES CORPORATION	Slot	Slot #04
Area	Tyler County, WV	Well	Dean Unit 1H
Field	Tyler	Wellbore	Dean Unit 1H AWB
Facility	Weigle East Pad		

## WELLPATH DATA (196 stations)

MD [ft]	Inclination [°]	Azimuth [°]	TVD [ft]	Vert Sect [ft]	North [ft]	East [ft]	Grid East [US ft]	Grid North [US ft]	Latitude	Longitude	Closure Dist [ft]	Closure Dir [°]	DLS [°/100ft]	Build Rate [°/100ft]	Turn Rate [°/100ft]	Comments
12408.00	89.720	334.440	6301.25	5693.02	4687.69	-3823.59	1678123.45	14336425.76	39°28'44.979"N	80°51'58.934"W	6049.32	320.797	3.21	-0.76	-3.12	
12498.00	89.940	334.350	6301.52	5782.50	4768.86	-3862.49	1678084.57	14336506.89	39°28'45.782"N	80°51'59.429"W	6136.84	320.995	0.26	0.24	-0.10	
12587.00	89.910	336.540	6301.64	5871.14	4849.80	-3899.47	1678047.60	14336587.80	39°28'46.582"N	80°51'59.899"W	6223.06	321.199	2.46	-0.03	2.46	
12677.00	89.940	337.870	6301.75	5960.98	4932.77	-3934.34	1678012.75	14336670.74	39°28'47.403"N	80°52'00.342"W	6309.61	321.424	1.48	0.03	1.48	
12767.00	90.090	342.280	6301.73	6050.95	5017.36	-3965.00	1677982.10	14336755.29	39°28'48.239"N	80°52'00.732"W	6394.93	321.682	4.90	0.17	4.90	
12857.00	90.120	346.510	6301.56	6140.73	5104.02	-3989.21	1677957.90	14336841.92	39°28'49.096"N	80°52'01.039"W	6478.03	321.990	4.70	0.03	4.70	
12946.00	90.180	347.640	6301.33	6229.16	5190.77	-4009.11	1677938.00	14336928.63	39°28'49.954"N	80°52'01.291"W	6558.74	322.319	1.27	0.07	1.27	
13036.00	90.310	347.190	6300.95	6318.51	5278.60	-4028.72	1677918.40	14337016.43	39°28'50.822"N	80°52'01.539"W	6640.35	322.648	0.52	0.14	-0.50	
13126.00	90.280	344.060	6300.48	6408.15	5365.77	-4051.06	1677896.07	14337103.57	39°28'51.684"N	80°52'01.823"W	6723.29	322.948	3.48	-0.03	-3.48	
13215.00	90.120	342.130	6300.17	6497.06	5450.92	-4076.94	1677870.20	14337188.68	39°28'52.526"N	80°52'02.151"W	6806.91	323.206	2.18	-0.18	-2.17	
13305.00	90.340	338.980	6299.81	6587.04	5535.78	-4106.90	1677840.25	14337273.50	39°28'53.365"N	80°52'02.531"W	6892.86	323.429	3.51	0.24	-3.50	
13395.00	90.280	336.300	6299.32	6676.92	5619.00	-4141.13	1677806.03	14337356.70	39°28'54.188"N	80°52'02.966"W	6980.13	323.610	2.98	-0.07	-2.98	
13484.00	90.280	338.350	6298.89	6765.77	5701.12	-4175.44	1677771.74	14337438.78	39°28'55.000"N	80°52'03.402"W	7066.62	323.781	2.30	0.00	2.30	
13574.00	89.970	340.610	6298.69	6855.75	5785.40	-4206.99	1677740.21	14337523.03	39°28'55.834"N	80°52'03.803"W	7153.29	323.976	2.53	-0.34	2.51	
13664.00	89.750	339.760	6298.91	6945.74	5870.07	-4237.50	1677709.71	14337607.66	39°28'56.671"N	80°52'04.191"W	7239.76	324.175	0.98	-0.24	-0.94	
13754.00	89.850	334.680	6299.23	7035.56	5953.03	-4272.33	1677674.89	14337690.58	39°28'57.491"N	80°52'04.633"W	7327.44	324.334	5.65	0.11	-5.64	
13843.00	89.970	332.180	6299.37	7123.87	6032.62	-4312.14	1677635.10	14337770.15	39°28'58.279"N	80°52'05.140"W	7415.32	324.443	2.81	0.13	-2.81	
13933.00	89.910	334.600	6299.46	7213.16	6113.08	-4352.45	1677594.81	14337850.57	39°28'59.075"N	80°52'05.652"W	7504.23	324.550	2.69	-0.07	2.69	
14023.00	89.690	336.730	6299.78	7302.82	6195.08	-4389.53	1677557.74	14337932.54	39°28'59.885"N	80°52'06.124"W	7592.56	324.680	2.38	-0.24	2.37	
14113.00	90.000	336.560	6300.02	7392.61	6277.70	-4425.21	1677522.07	14338015.13	39°29'00.703"N	80°52'06.577"W	7680.63	324.820	0.39	0.34	-0.19	
14202.00	90.120	338.020	6299.93	7481.46	6359.80	-4459.57	1677487.73	14338097.20	39°29'01.515"N	80°52'07.014"W	7767.55	324.961	1.65	0.13	1.64	
14292.00	90.030	340.820	6299.81	7571.44	6444.05	-4491.20	1677456.11	14338181.41	39°29'02.348"N	80°52'07.416"W	7854.72	325.125	3.11	-0.10	3.11	
14382.00	90.180	343.540	6299.64	7661.39	6529.72	-4518.74	1677428.58	14338267.05	39°29'03.195"N	80°52'07.765"W	7940.80	325.316	3.03	0.17	3.02	
14471.00	90.180	344.270	6299.36	7750.24	6615.23	-4543.41	1677403.91	14338352.53	39°29'04.040"N	80°52'08.078"W	8025.21	325.518	0.82	0.00	0.82	
14561.00	90.180	343.960	6299.08	7840.07	6701.80	-4568.05	1677379.29	14338439.06	39°29'04.896"N	80°52'08.391"W	8110.66	325.721	0.34	0.00	-0.34	
14651.00	90.090	344.120	6298.87	7929.90	6788.33	-4592.79	1677354.55	14338525.55	39°29'05.752"N	80°52'08.705"W	8196.04	325.919	0.20	-0.10	0.18	
14740.00	90.550	345.250	6298.37	8018.67	6874.16	-4616.30	1677331.06	14338611.35	39°29'06.600"N	80°52'09.003"W	8280.36	326.117	1.37	0.52	1.27	
14830.00	90.220	345.210	6297.77	8108.37	6961.19	-4639.24	1677308.12	14338698.34	39°29'07.461"N	80°52'09.294"W	8365.45	326.319	0.37	-0.37	-0.04	
14920.00	90.280	343.470	6297.37	8198.17	7047.84	-4663.54	1677283.84	14338784.96	39°29'08.318"N	80°52'09.602"W	8451.07	326.508	1.93	0.07	-1.93	
15009.00	90.220	343.720	6296.99	8287.04	7133.22	-4688.67	1677258.71	14338870.31	39°29'09.162"N	80°52'09.921"W	8536.18	326.683	0.29	-0.07	0.28	





# Actual Wellpath Report

Dean Unit 1H AWP Proj: 16376'  
Page 8 of 10



### REFERENCE WELLPATH IDENTIFICATION

Operator	ANTERO RESOURCES CORPORATION	Slot #04
Area	Tyler County, WV	Dean Unit 1H
Field	Tyler	Dean Unit 1H AWB
Facility	Weigle East Pad	

### WELLPATH DATA (196 stations)

MD	Inclination	Azimuth	TVD	Vert Sect	North	East	Grid East	Grid North	Latitude	Longitude	Closure Dist	Closure Dir	DLS	Build Rate	Turn Rate	Comments
ft	°	°	ft	ft	ft	ft	[US ft]	[US ft]			ft	°	°/100ft	°/100ft	°/100ft	
15099.00	90.220	341.630	6296.64	8376.97	7219.13	-4715.47	1677231.92	14338956.18	39°29'10.011"N	80°52'10.262"W	8622.73	326.848	2.32	0.00	-2.32	
15189.00	90.090	338.810	6296.40	8466.96	7303.81	-4745.93	1677201.48	14339040.83	39°29'10.849"N	80°52'10.649"W	8710.31	326.985	3.14	-0.14	-3.13	
15278.00	90.150	337.180	6296.21	8555.87	7386.32	-4779.27	1677168.15	14339123.31	39°29'11.665"N	80°52'11.072"W	8797.68	327.095	1.83	0.07	-1.83	
15368.00	90.250	336.660	6295.90	8645.69	7469.12	-4814.55	1677132.88	14339206.07	39°29'12.483"N	80°52'11.521"W	8886.38	327.194	0.59	0.11	-0.58	
15458.00	90.180	337.210	6295.56	8735.51	7551.92	-4849.81	1677097.64	14339288.84	39°29'13.302"N	80°52'11.969"W	8975.09	327.292	0.62	-0.08	0.61	
15548.00	90.620	339.200	6294.93	8825.42	7635.48	-4883.23	1677064.24	14339372.37	39°29'14.129"N	80°52'12.394"W	9063.47	327.399	2.26	0.49	2.21	
15637.00	90.370	340.840	6294.16	8914.41	7719.12	-4913.63	1677033.84	14339455.97	39°29'14.956"N	80°52'12.780"W	9150.34	327.521	1.86	-0.28	1.84	
15727.00	90.310	344.240	6293.63	9004.34	7804.96	-4940.63	1677006.85	14339541.78	39°29'15.804"N	80°52'13.123"W	9237.28	327.666	3.78	-0.07	3.78	
15817.00	90.250	344.160	6293.19	9094.16	7891.56	-4965.14	1676982.36	14339628.34	39°29'16.661"N	80°52'13.434"W	9323.59	327.823	0.11	-0.07	-0.09	
15906.00	90.150	342.010	6292.88	9183.07	7976.70	-4991.03	1676956.48	14339713.45	39°29'17.503"N	80°52'13.762"W	9409.47	327.966	2.42	-0.11	-2.42	
15996.00	90.220	340.700	6292.59	9273.06	8061.98	-5019.80	1676927.71	14339798.69	39°29'18.346"N	80°52'14.128"W	9497.05	328.091	1.46	0.08	-1.46	
16085.00	90.430	339.790	6292.08	9362.05	8145.74	-5049.88	1676897.65	14339882.42	39°29'19.174"N	80°52'14.510"W	9584.07	328.203	1.05	0.24	-1.02	
16176.00	90.620	338.140	6291.25	9453.01	8230.67	-5082.55	1676865.00	14339967.31	39°29'20.014"N	80°52'14.925"W	9673.48	328.304	1.83	0.21	-1.81	
16265.00	90.490	340.490	6290.38	9541.98	8313.92	-5113.98	1676833.58	14340050.53	39°29'20.837"N	80°52'15.324"W	9760.84	328.404	2.64	-0.15	2.64	
16351.00	90.220	340.640	6289.85	9627.98	8395.02	-5142.59	1676804.97	14340131.60	39°29'21.639"N	80°52'15.688"W	9844.93	328.509	0.36	-0.31	0.17	
16376.00	90.220	340.640	6289.76	9652.98	8418.60	-5150.88	1676796.69	14340155.18	39°29'21.872"N	80°52'15.793"W	9869.37	328.540	0.00	0.00	0.00	Projected MD at TD: 16376'

### TARGETS

Name	TVD	North	East	Grid East	Grid North	Latitude	Longitude	Shape
	ft	ft	ft	[US ft]	[US ft]			
Dean Unit 1H POE - Plat	6263.00	-518.15	-2000.31	1679946.00	14331222.00	39°27'53.500"N	80°51'35.785"W	point
Dean Unit 1H BHL - Plat	6290.00	8393.09	-5145.11	1676802.45	14340129.67	39°29'21.620"N	80°52'15.720"W	point
Dean Unit 1H LP Rev-1	6290.00	-368.88	-2052.98	1679893.36	14331371.21	39°27'54.976"N	80°51'36.454"W	point



# Actual Wellpath Report

Dean Unit 1H AWP Proj: 16376'  
Page 9 of 10



REFERENCE WELLPATH IDENTIFICATION		
Operator	ANTERO RESOURCES CORPORATION	Slot #04
Area	Tyler County, WV	Dean Unit 1H
Field	Tyler	Wellbore
Facility	Weigle East Pad	Dean Unit 1H AWB

WELLPATH COMPOSITION - Ref Wellbore: Dean Unit 1H AWB Ref Wellpath: Dean Unit 1H AWP Proj: 16376'		
Start MD (ft)	End MD (ft)	Log Name/Comment
19.00	5768.00	Positional Uncertainty Model
5768.00	16351.00	01 Gyrodata standard - Drop gyro or Multi-shot
16351.00	16376.00	02 BHI AT Curve <8-1/2">(5768\5902-16351)
		Projection to bit
		Wellbore
		Dean Unit 1H AWB
		Dean Unit 1H AWB
		Dean Unit 1H AWB



# Actual Wellpath Report

Dean Unit 1H AWP Proj: 16376'

Page 10 of 10



## REFERENCE WELLPATH IDENTIFICATION

Operator	Area	Field	Facility	Slot	Slot #04
ANTERO RESOURCES CORPORATION	Tyler County, WV	Tyler	Weigle East Pad	Well	Dean Unit 1H
				Wellbore	Dean Unit 1H AWB

## COMMENTS

### Wellpath general comments

API: 47-095-02346-0000  
 BHI Job #: 8026890  
 Rig: Precision 525  
 Duration: 8/11/2016-8/14/2016  
 Gyrodatta MS Gyro <8-3/4"> (100'-5768')  
 BHI AT Curve <8-1/2"> (5768')(5902'-16351')  
 Sycamore: 6352' MD  
 Middlesex: 6581' MD  
 Burkett: 6743' MD  
 Tully: 6789' MD  
 Marcellus POE: 6893' MD  
 Projected MD at TD: 16376'