

ANTERO RESOURCES CORPORATION

Location: Tyler County, WV
 Field: Tyler
 Facility: Edna Monroe Pad

Slot: Slot #06
 Well: Deulley Unit 1H
 Wellbore: Deulley Unit 1H PWB



API: 47-095-02359-0000
 BHI Job #: 8354425
 Rig: Patterson 343
 Duration: 01/18/2017-01/22/2017

Property	Value
Well Reference	Deulley Unit 1H PWB Rev-A.0
Grid System	NAD27 UTM Zone 17 North US Feet
True vertical depths	are referenced to Patterson 343 (RKB)
Measured depths	are referenced to Patterson 343 (RKB)
North Reference	Grid North
Patterson 343 (RKB)	to Mean Sea Level, 1069 feet
Scale	True distance
Mean Sea Level	to Mud line (At Slot Slot #06) -1044 feet
Coordinates	are in feet referenced to Slot
Created by	deleted on 2017-01-23
Database	WA_MPL_Estimate5_CeH

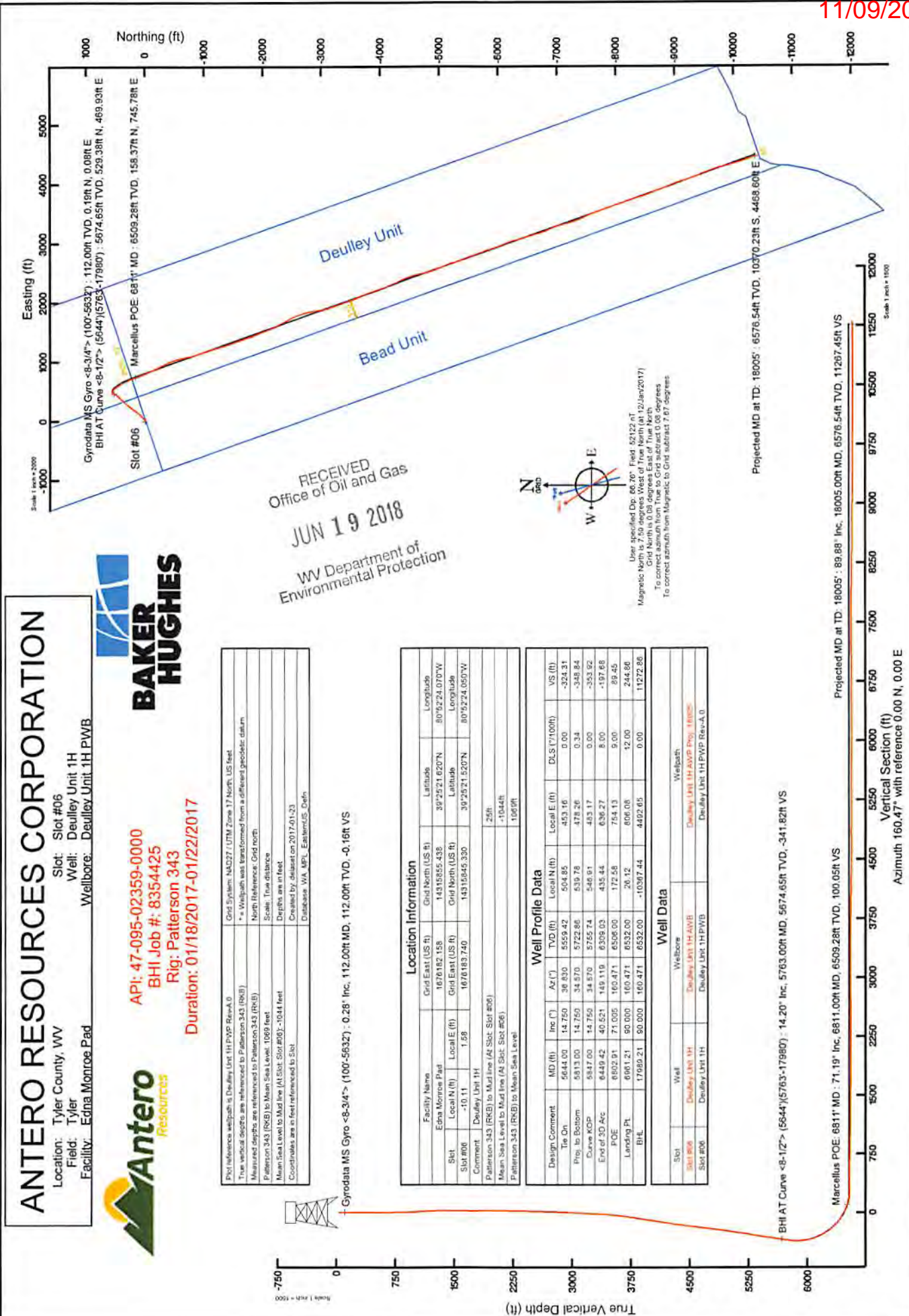
Gyrodota MS Gyro <8-3/4">: 0.28" Inc, 112.00ft TVD, -0.16ft VS

RECEIVED
 Office of Oil and Gas
 JUN 19 2018
 WV Department of
 Environmental Protection

Location Information			
Facility Name	Edna Monroe Pad	Grid East (US ft)	1676182.158
Slot	Local N (ft)	Grid North (US ft)	14315855.438
Slot #06	-10.11	Grid East (US ft)	1676183.740
Comment	Deulley Unit 1H	Grid North (US ft)	14315855.330
Patterson 343 (RKB)	to Mud line (At Slot Slot #06)	Local E (ft)	504.85
Mean Sea Level	to Mud line (At Slot Slot #06)	Local N (ft)	504.85
Patterson 343 (RKB)	to Mean Sea Level	Local E (ft)	453.16
		Local N (ft)	0.00
		DLS (1/100ft)	0.00
		VS (ft)	-324.31

Well Profile Data			
Design Comment	MD (ft)	Inc (")	Ar (")
Tie On	5644.00	14.750	36.030
Prop. to Bottom	5813.00	14.750	34.970
Curve KOP	6449.42	40.521	149.119
End of 3D Arc	6802.91	71.005	100.471
POE	6881.21	80.000	100.471
Landing PL	17980.21	80.000	100.471
BHL	17980.21	80.000	100.471

Well Data	
Slot	Deulley Unit 1H
Wellbore	Deulley Unit 1H PWB
Wellpath	Deulley Unit 1H PWB Rev-A.0



Vertical Section (ft)
 Azimuth 160.47" with reference 0.00 N, 0.00 E

Projected MD at TD: 18005' - Inc, 18005.00ft MD, 6576.54ft TVD, 11267.45ft VS
 Projected MD at TD: 18005' - Inc, 18005.00ft MD, 6576.54ft TVD, 11267.45ft VS

Scale 1 inch = 1000



Actual Wellpath Report

Deulley Unit 1H AWP Proj: 18005'
Page 1 of 10



REFERENCE WELLPATH IDENTIFICATION			
Operator	ANTERO RESOURCES CORPORATION	Slot	Slot #06
Area	Tyler County, WV	Well	Deulley Unit 1H
Field	Tyler	Wellbore	Deulley Unit 1H AWB
Facility	Edna Monroe Pad		

REPORT SETUP INFORMATION			
Projection System	NAD27 / UTM Zone 17 North, US feet	Software System	WellArchitect® 5.0
North Reference	Grid	User	Delaset
Scale	0.999601	Report Generated	23/Jan/2017 at 11:38
Convergence at slot	0.09° East	Database/Source file	WA_MPL_EasternUS_Defn/Deulley_Unit_1H_AWP_Proj_18005_.xml

WELLPATH LOCATION						
	Local coordinates		Grid coordinates		Geographic coordinates	
	North[ft]	East[ft]	Easting[US ft]	Northing[US ft]	Latitude	Longitude
Slot Location	-10.11	1.58	1676183.74	14315845.33	39°25'21.520"N	80°52'24.050"W
Facility Reference Pt			1676182.16	14315855.44	39°25'21.620"N	80°52'24.070"W
Field Reference Pt			0.00	0.00	0°00'00.000"	85°29'19.301"W

WELLPATH DATUM			
Calculation method	Minimum curvature	Patterson 343 (RKB) to Facility Vertical Datum	25.00ft
Horizontal Reference Pt	Slot	Patterson 343 (RKB) to Mean Sea Level	1069.00ft
Vertical Reference Pt	Patterson 343 (RKB)	Patterson 343 (RKB) to Mud Line at Slot (Slot #06)	25.00ft
MD Reference Pt	Patterson 343 (RKB)	Section Origin	N 0.00, E 0.00 ft
Field Vertical Reference	Mean Sea Level	Section Azimuth	160.47°

RECEIVED
Office of Oil and Gas
JUN 19 2018
WV Department of
Environmental Protection



Actual Wellpath Report

Deulley Unit 1H AWP Proj: 18005'

Page 2 of 10



REFERENCE WELLPATH IDENTIFICATION			
Operator	ANTERO RESOURCES CORPORATION	Slot	Slot #06
Area	Tyler County, WV	Well	Deulley Unit 1H
Field	Tyler	Wellbore	Deulley Unit 1H AWP
Facility	Edna Monroe Pad		

WELLPATH DATA (207 stations) † = interpolated/extrapolated station																
MD	Inclination	Azimuth	TVD	Vert Sect	North	East	Grid East	Grid North	Latitude	Longitude	Closure Dist	Closure Dir	DLS	Build Rate	Turn Rate	Comments
(ft)	(°)	(°)	(ft)	(ft)	(ft)	(ft)	(US ft)	(US ft)			(ft)	(°)	(°/100ft)	(°/100ft)	(°/100ft)	
0.00	0.000	23.470	0.00	0.00	0.00	0.00	1676183.74	14315845.33	39°25'21.520"N	80°52'24.050"W	0.00	0.000	0.00	0.00	0.00	
25.00	0.000	23.470	25.00	0.00	0.00	0.00	1676183.74	14315845.33	39°25'21.520"N	80°52'24.050"W	0.00	0.000	0.00	0.00	0.00	
112.00	0.280	23.470	112.00	-0.16	0.19	0.08	1676183.82	14315845.52	39°25'21.522"N	80°52'24.049"W	0.21	23.470	0.32	0.32	26.98	Gyrodatta MS Gyro <8-3/4"> (100'-5632')
212.00	0.070	359.790	212.00	-0.39	0.48	0.18	1676183.92	14315845.81	39°25'21.525"N	80°52'24.048"W	0.51	20.731	0.22	-0.21	-23.68	
312.00	0.130	168.990	312.00	-0.34	0.43	0.20	1676183.94	14315845.76	39°25'21.524"N	80°52'24.047"W	0.48	25.296	0.20	0.06	169.20	
412.00	0.150	167.750	412.00	-0.10	0.19	0.25	1676183.99	14315845.52	39°25'21.522"N	80°52'24.047"W	0.32	52.959	0.02	0.02	-1.24	
512.00	0.140	163.150	512.00	0.16	-0.05	0.32	1676184.06	14315845.28	39°25'21.519"N	80°52'24.046"W	0.32	99.735	0.02	-0.01	-4.60	
612.00	0.590	61.280	612.00	0.20	0.08	0.80	1676184.54	14315845.41	39°25'21.521"N	80°52'24.040"W	0.81	84.571	0.63	0.45	-101.87	
712.00	1.980	76.190	711.97	0.29	0.74	2.93	1676186.67	14315846.07	39°25'21.527"N	80°52'24.013"W	3.02	75.907	1.42	1.39	14.91	
812.00	4.000	88.440	811.83	1.53	1.24	8.10	1676191.83	14315846.57	39°25'21.532"N	80°52'23.947"W	8.19	81.269	2.11	2.02	12.25	
912.00	4.710	103.310	911.54	4.84	0.39	15.58	1676199.31	14315845.72	39°25'21.524"N	80°52'23.851"W	15.58	88.554	1.33	0.71	14.87	
1012.00	4.720	106.430	1011.20	9.48	-1.72	23.52	1676207.25	14315843.61	39°25'21.503"N	80°52'23.750"W	23.58	94.172	0.26	0.01	3.12	
1112.00	4.570	105.560	1110.88	14.19	-3.95	31.30	1676215.03	14315841.38	39°25'21.481"N	80°52'23.651"W	31.55	97.188	0.17	-0.15	-0.87	
1212.00	4.030	104.840	1210.59	18.46	-5.92	38.54	1676222.26	14315839.42	39°25'21.461"N	80°52'23.559"W	38.99	98.728	0.54	-0.54	-0.72	
1312.00	2.340	106.050	1310.44	21.63	-7.38	43.90	1676227.62	14315837.95	39°25'21.446"N	80°52'23.491"W	44.51	99.545	1.69	-1.69	1.21	
1412.00	0.770	85.230	1410.40	22.99	-7.89	46.53	1676230.25	14315837.44	39°25'21.441"N	80°52'23.457"W	47.19	99.624	1.64	-1.57	-20.82	
1512.00	0.900	319.510	1510.39	22.43	-7.24	46.69	1676230.41	14315838.10	39°25'21.448"N	80°52'23.455"W	47.25	98.810	1.49	0.13	-125.72	
1612.00	1.340	287.920	1610.37	20.98	-6.28	45.07	1676228.79	14315839.05	39°25'21.457"N	80°52'23.476"W	45.50	97.932	0.74	0.44	-31.59	
1712.00	0.830	265.910	1710.36	20.08	-5.97	43.23	1676226.95	14315839.36	39°25'21.460"N	80°52'23.499"W	43.64	97.864	0.65	-0.51	-22.01	
1812.00	0.580	194.580	1810.35	20.31	-6.51	42.38	1676226.11	14315838.82	39°25'21.455"N	80°52'23.510"W	42.88	98.736	0.85	-0.25	-71.33	
1912.00	0.870	166.340	1910.34	21.48	-7.74	42.43	1676226.16	14315837.59	39°25'21.443"N	80°52'23.509"W	43.13	100.338	0.45	0.29	-28.24	
2012.00	0.520	240.140	2010.34	22.32	-8.70	42.22	1676225.94	14315836.63	39°25'21.433"N	80°52'23.512"W	43.11	101.649	0.88	-0.35	73.80	
2112.00	0.970	295.570	2110.33	21.80	-8.56	41.06	1676224.79	14315836.77	39°25'21.435"N	80°52'23.527"W	41.95	101.782	0.80	0.45	55.43	
2212.00	1.410	305.520	2210.31	20.19	-7.48	39.30	1676223.02	14315837.85	39°25'21.446"N	80°52'23.549"W	40.00	100.783	0.48	0.44	9.95	
2312.00	1.370	318.850	2310.28	18.07	-5.87	37.51	1676221.23	14315839.46	39°25'21.462"N	80°52'23.572"W	37.97	98.894	0.33	-0.04	13.33	
2412.00	1.400	333.920	2410.25	15.75	-3.87	36.19	1676219.91	14315841.46	39°25'21.481"N	80°52'23.589"W	36.39	96.108	0.36	0.03	15.07	
2512.00	1.450	338.260	2510.22	13.27	-1.60	35.18	1676218.91	14315843.73	39°25'21.504"N	80°52'23.602"W	35.22	92.604	0.12	0.05	4.34	
2612.00	1.500	337.380	2610.18	10.70	0.78	34.21	1676217.93	14315846.11	39°25'21.527"N	80°52'23.614"W	34.22	88.688	0.05	0.05	-0.88	
2712.00	1.590	322.020	2710.15	8.07	3.09	32.85	1676216.58	14315848.41	39°25'21.550"N	80°52'23.631"W	33.00	84.635	0.42	0.09	-15.36	
2812.00	3.710	39.600	2810.06	5.10	6.67	34.06	1676217.79	14315852.00	39°25'21.586"N	80°52'23.616"W	34.71	78.915	3.71	2.12	77.58	

RECEIVED
Office of Oil and Gas

JUN 19 2018

WV Department of
Environmental Protection



Actual Wellpath Report

Deulley Unit 1H AWP Proj: 18005'
Page 3 of 10



REFERENCE WELLPATH IDENTIFICATION	
Operator	ANTERO RESOURCES CORPORATION
Area	Tyler County, WV
Field	Tyler
Facility	Edna Monroe Pad
Slot	Slot #06
Well	Deulley Unit 1H
Wellbore	Deulley Unit 1H AWB

WELLPATH DATA (207 stations)																
MD (ft)	Inclination (°)	Azimuth (°)	TVD (ft)	Vert.Sect (ft)	North (ft)	East (ft)	Grid East (US ft)	Grid North (US ft)	Latitude	Longitude	Closure Dist (ft)	Closure Dir (°)	DLS (°/100ft)	Build Rate (°/100ft)	Turn Rate (°/100ft)	Comments
2912.00	5.090	40.940	2809.76	1.25	12.52	39.03	1676222.75	14315887.84	39°25'21.643"N	80°52'23.552"W	40.99	72.219	1.38	1.38	1.34	
3012.00	5.620	41.120	3009.33	-3.34	19.56	45.16	1676228.88	14315864.88	39°25'21.713"N	80°52'23.474"W	49.21	66.583	0.53	0.53	0.18	
3112.00	6.170	40.710	3108.80	-8.40	27.32	51.88	1676235.60	14315872.64	39°25'21.789"N	80°52'23.388"W	58.63	62.230	0.55	0.55	-0.41	
3212.00	6.630	45.910	3208.17	-13.47	35.41	59.53	1676243.25	14315880.73	39°25'21.869"N	80°52'23.291"W	69.27	59.256	0.74	0.46	5.20	
3312.00	8.240	48.460	3307.33	-18.56	44.18	69.04	1676252.76	14315889.49	39°25'21.956"N	80°52'23.189"W	81.97	57.386	1.64	1.61	2.55	
3412.00	9.990	46.320	3406.06	-24.79	54.92	80.68	1676264.39	14315900.23	39°25'22.062"N	80°52'23.021"W	97.60	55.756	1.78	1.75	-2.14	
3512.00	13.190	47.900	3504.01	-32.72	68.56	95.42	1676279.12	14315913.96	39°25'22.196"N	80°52'22.833"W	117.49	54.302	3.21	3.19	1.58	
3612.00	14.670	47.010	3601.07	-42.13	84.84	113.14	1676296.83	14315930.13	39°25'22.357"N	80°52'22.607"W	141.41	53.136	1.51	1.49	-0.89	
3712.00	15.120	41.260	3697.72	-53.54	103.28	131.00	1676314.69	14315948.57	39°25'22.539"N	80°52'22.379"W	166.82	51.749	1.54	0.45	-5.75	
3812.00	15.420	36.400	3794.19	-67.35	123.78	147.49	1676331.18	14315869.06	39°25'22.741"N	80°52'22.168"W	192.55	49.995	1.31	0.30	-4.86	
3912.00	14.670	35.180	3890.76	-82.12	144.83	162.68	1676346.35	14315990.11	39°25'22.949"N	80°52'21.974"W	217.81	48.321	0.81	-0.75	-1.22	
4012.00	15.140	36.460	3987.40	-96.74	165.68	177.74	1676361.40	14316010.95	39°25'23.155"N	80°52'21.782"W	242.99	47.009	0.57	0.47	1.28	
4112.00	16.060	37.000	4083.71	-111.67	187.24	193.82	1676377.48	14316032.49	39°25'23.368"N	80°52'21.577"W	269.49	45.990	0.93	0.92	0.54	
4212.00	16.040	35.120	4179.82	-127.29	209.58	210.08	1676393.75	14316054.83	39°25'23.589"N	80°52'21.369"W	296.76	45.070	0.52	-0.02	-1.88	
4312.00	15.280	35.240	4276.10	-142.89	231.65	225.64	1676409.29	14316076.88	39°25'23.806"N	80°52'21.171"W	323.38	44.248	0.76	-0.76	0.12	
4412.00	14.620	38.160	4372.72	-157.23	252.33	241.05	1676424.69	14316097.56	39°25'24.011"N	80°52'20.974"W	348.96	43.689	1.00	-0.66	2.92	
4512.00	14.220	40.210	4469.57	-170.17	271.64	256.77	1676440.41	14316116.86	39°25'24.201"N	80°52'20.773"W	373.79	43.389	0.65	-0.40	2.05	
4612.00	13.650	41.490	4566.63	-182.07	289.85	272.52	1676456.15	14316135.07	39°25'24.381"N	80°52'20.572"W	397.85	43.234	0.65	-0.57	1.28	
4712.00	14.650	40.250	4663.59	-194.16	308.35	288.51	1676472.13	14316153.55	39°25'24.564"N	80°52'20.368"W	422.27	43.096	1.04	1.00	-1.24	
4812.00	15.360	43.630	4760.18	-206.50	327.58	305.82	1676489.43	14316172.78	39°25'24.753"N	80°52'20.147"W	448.15	43.032	1.13	0.71	3.38	
4912.00	14.790	41.570	4856.74	-218.65	346.72	323.43	1676507.04	14316191.91	39°25'24.942"N	80°52'19.922"W	474.15	43.009	0.78	-0.57	-2.06	
5012.00	15.190	40.060	4953.34	-231.45	366.30	340.33	1676523.93	14316211.48	39°25'25.136"N	80°52'19.707"W	499.99	42.895	0.56	0.40	-1.51	
5112.00	16.620	40.470	5049.51	-245.23	387.20	358.04	1676541.64	14316232.38	39°25'25.342"N	80°52'19.481"W	527.37	42.759	1.43	1.43	0.41	
5212.00	17.060	43.170	5145.22	-259.12	408.79	377.37	1676559.96	14316253.96	39°25'25.555"N	80°52'19.234"W	556.35	42.711	0.91	0.46	2.70	
5312.00	17.520	37.740	5240.70	-273.99	431.41	396.63	1676580.21	14316276.57	39°25'25.778"N	80°52'18.988"W	586.03	42.595	1.67	0.44	-5.43	
5412.00	17.800	37.360	5335.99	-290.48	455.46	415.12	1676598.69	14316300.61	39°25'26.016"N	80°52'18.752"W	616.25	42.347	0.30	0.28	-0.38	
5512.00	14.960	38.990	5431.92	-305.57	477.65	432.52	1676616.09	14316322.79	39°25'26.235"N	80°52'18.530"W	644.38	42.162	2.88	-2.84	1.63	
5612.00	15.080	35.920	5528.50	-319.89	498.21	448.27	1676631.83	14316343.34	39°25'26.438"N	80°52'18.329"W	670.20	41.980	0.80	0.12	-3.07	
5644.00	14.750	36.830	5559.42	-324.31	504.85	453.16	1676636.72	14316349.97	39°25'26.503"N	80°52'18.268"W	678.40	41.912	1.26	-1.03	2.84	
5763.00	14.200	31.810	5674.65	-341.82	529.38	469.93	1676653.48	14316374.49	39°25'26.745"N	80°52'18.052"W	707.87	41.596	1.15	-0.46	-4.22	BH/AT Curve <8-1/2"> (5644)-(5763)-17980)

RECEIVED
Office of Oil and Gas

JUN 19 2018

WV Department of
Environmental Protection

11/09/2018



Actual Wellpath Report

Deuley Unit 1H AWP Proj.: 18005
Page 4 of 10



REFERENCE WELLPATH IDENTIFICATION			
Operator	ANTERO RESOURCES CORPORATION	Slot	Slot #06
Area	Tyler County, WV	Well	Deuley Unit 1H
Field	Tyler	Wellbore	Deuley Unit 1H AWB
Facility	Edna Monroe Pad		

MD	Inclination	Azimuth	TVD	Vent Sect	North	East	East	Grid East	Grid North	Latitude	Longitude	Closure Dist	Closure Dir	DLS	Build Rate	Turn Rate	Comments
ft	°	°	ft	ft	ft	ft	ft	ft	ft	ft	ft	ft	ft	ft	ft/100ft	ft/100ft	
5858.00	12.44	30.96	5767.09	-355.61	548.05	481.34	1676664.89	14316393.16	39°25'26.930"N	80°52'17.907"W	729.42	41.292	-1.85	-0.89			
5905.00	11.57	47.08	5813.08	-360.70	555.61	487.40	1676670.94	14316400.71	39°25'27.005"N	80°52'17.829"W	739.09	41.258	7.34	-1.85	34.30		
5953.00	11.77	68.03	5860.11	-362.82	560.72	495.47	1676679.01	14316405.82	39°25'27.055"N	80°52'17.726"W	748.26	41.465	8.79	0.42	43.65		
6000.00	12.17	88.57	5906.10	-361.49	562.64	504.87	1676688.41	14316407.74	39°25'27.074"N	80°52'17.606"W	755.94	41.902	9.06	0.85	43.70		
6047.00	13.11	105.94	5951.98	-356.85	561.30	514.95	1676698.48	14316409.40	39°25'27.060"N	80°52'17.478"W	761.73	42.534	8.30	2.00	36.96		
6094.00	15.51	119.94	5997.53	-348.98	556.69	525.53	1676709.05	14316401.80	39°25'27.015"N	80°52'17.343"W	765.56	43.350	8.93	5.11	29.79		
6141.00	18.27	130.14	6042.51	-337.84	548.80	536.61	1676720.13	14316393.92	39°25'26.937"N	80°52'17.202"W	767.55	44.356	8.60	5.87	21.70		
6188.00	21.25	137.97	6086.75	-323.61	537.72	547.95	1676731.47	14316382.84	39°25'26.827"N	80°52'17.058"W	767.72	45.539	8.47	6.34	16.66		
6238.00	24.19	142.76	6131.02	-306.20	523.43	559.72	1676743.24	14316368.55	39°25'26.666"N	80°52'16.908"W	766.34	46.919	7.23	6.12	9.98		
6283.00	27.82	146.46	6173.26	-286.38	506.62	571.62	1676755.13	14316353.17	39°25'26.519"N	80°52'16.757"W	763.81	48.450	8.46	7.72	7.87		
6330.00	30.99	147.45	6214.20	-263.94	487.27	584.19	1676767.70	14316332.40	39°25'26.328"N	80°52'16.597"W	760.73	50.169	6.82	6.74	2.11		
6377.00	35.28	148.64	6253.55	-238.86	465.47	597.77	1676781.27	14316310.61	39°25'26.112"N	80°52'16.424"W	757.62	52.093	9.23	9.13	2.53		
6424.00	37.68	149.66	6291.34	-211.46	441.49	612.11	1676795.61	14316286.65	39°25'25.875"N	80°52'16.242"W	754.72	54.199	5.24	5.11	1.96		
6471.00	42.76	150.49	6327.21	-181.62	415.21	627.26	1676810.75	14316260.37	39°25'25.615"N	80°52'16.050"W	752.23	56.498	10.88	10.81	1.98		
6488.00	44.42	150.49	6339.52	-170.08	405.00	633.03	1676816.62	14316250.17	39°25'25.514"N	80°52'15.976"W	751.50	57.390	9.81	9.81	0.04	Middlesex: 6488' MD	
6519.00	47.47	150.51	6361.08	-148.14	385.61	644.00	1676827.48	14316230.79	39°25'25.322"N	80°52'15.837"W	750.62	59.088	9.81	9.81	0.04		
6566.00	51.74	151.44	6391.53	-112.84	354.32	661.36	1676844.83	14316199.51	39°25'25.013"N	80°52'15.616"W	750.29	61.820	9.21	9.09	1.98		
6613.00	55.27	153.40	6419.48	-75.44	320.83	678.83	1676862.30	14316166.03	39°25'24.681"N	80°52'15.394"W	750.83	64.704	8.22	7.51	4.17		
6655.00	58.59	155.46	6442.39	-40.44	289.08	694.01	1676877.48	14316134.30	39°25'24.367"N	80°52'15.201"W	751.81	67.386	8.90	7.91	4.87	Burket: 6655' MD	
6660.00	58.99	155.68	6444.98	-36.18	285.19	695.78	1676879.24	14316130.41	39°25'24.329"N	80°52'15.179"W	751.86	67.712	8.90	7.95	4.67		
6707.00	62.56	158.54	6467.93	4.75	247.41	711.72	1676895.17	14316092.64	39°25'23.955"N	80°52'14.976"W	753.49	70.831	9.27	7.60	6.09		
6721.00	63.57	158.78	6474.27	-17.23	235.78	716.26	1676899.71	14316081.02	39°25'23.840"N	80°52'14.919"W	754.07	71.779	7.44	7.27	1.74	July: 6721' MD	
6754.00	65.98	159.34	6488.33	47.07	207.90	726.92	1676910.37	14316053.15	39°25'23.565"N	80°52'14.783"W	756.07	74.039	7.44	7.28	1.69		
6802.00	70.07	159.02	6506.29	91.56	166.30	742.74	1676926.19	14316011.57	39°25'23.153"N	80°52'14.582"W	751.13	77.379	8.54	8.52	-0.67		
6811.00	71.19	159.08	6509.28	100.05	158.37	745.78	1676929.22	14316003.64	39°25'23.075"N	80°52'14.544"W	752.41	78.011	12.46	12.45	0.68	Marcellus POE: 6811' MD	
6849.00	75.92	159.33	6520.03	136.48	124.31	758.71	1676942.15	14315969.59	39°25'22.738"N	80°52'14.380"W	758.83	80.695	12.46	12.45	0.66		
6896.00	81.04	160.39	6529.41	182.51	81.09	774.56	1676957.99	14315926.39	39°25'22.311"N	80°52'14.179"W	778.79	84.023	11.12	10.88	2.26		
6943.00	88.28	160.28	6533.79	229.28	37.05	790.30	1676973.72	14315882.37	39°25'21.875"N	80°52'13.979"W	791.17	87.316	15.41	15.40	-0.23		
6996.67	89.48	158.91	6534.83	282.93	-13.24	809.01	1676992.42	14315832.10	39°25'21.378"N	80°52'13.741"W	809.11	90.938	3.39	2.24	-2.55		
7085.00	89.60	153.60	6535.54	370.99	-94.06	844.56	1677027.96	14315751.31	39°25'20.579"N	80°52'13.290"W	849.78	96.355	6.01	0.14	-6.01		

RECEIVED
Office of Oil and Gas
JUN 19 2018
WV Department of
Environmental Protection



Actual Wellpath Report

Deulley Unit 1H AWP Proj: 18005
Page 5 of 10



Operator	Area	Field	Facility
ANTERO RESOURCES CORPORATION	Tyler County, WV	Tyler	Edna Monroe Pad
	Well	Wellbore	
	Deulley Unit 1H	Deulley Unit 1H AWB	
	Slot		
	Slot #06		

REFERENCE WELLPATH IDENTIFICATION

MD	Inclination	Azimuth	TVD	Vent Sect	North	East	Grid East	Grid North	Latitude	Longitude	Closure Dist	Closure Dir	DLS	Build Rate	Turn Rate	Comments
(m)	(°)	(°)	(m)	(m)	(m)	(m)	(m)	(m)	(m)	(m)	(m)	(°)	(m)	(m/100m)	(°/100m)	(°/100m)
7179.00	89.780	155.250	6538.05	454.46	-178.85	885.14	1677068.52	14315666.56	39.2519.740°N	80.5212.774°W	903.02	101.423	1.77	0.19	1.76	
7273.00	89.120	155.020	6536.13	558.05	-264.13	924.66	1677108.03	14315581.30	39.2518.896°N	80.5212.272°W	961.66	105.942	0.44	0.36	-0.24	
7367.00	88.740	152.540	6537.07	651.40	-348.45	966.19	1677149.54	14315497.02	39.2518.063°N	80.5211.745°W	1027.10	109.831	3.02	-1.47	-2.64	
7461.00	89.080	158.560	6538.86	744.99	-433.96	1005.07	1677188.41	14315411.54	39.2517.217°N	80.5211.251°W	1094.75	113.353	6.41	0.36	6.40	
7556.00	88.860	162.830	6540.57	839.95	-523.61	1036.38	1677219.71	14315321.93	39.2516.330°N	80.5210.853°W	1161.15	116.804	4.61	-0.23	4.60	
7650.00	89.170	167.850	6542.18	933.56	-614.53	1060.08	1677243.40	14315231.05	39.2515.431°N	80.5210.553°W	1225.33	120.101	5.24	0.33	5.23	
7744.00	89.420	168.950	6543.34	1026.65	-706.60	1078.98	1677262.29	14315139.01	39.2514.521°N	80.5210.314°W	1289.76	123.220	1.20	0.27	1.17	
7838.00	89.720	169.670	6544.05	1120.05	-798.10	1100.43	1677283.73	14315047.55	39.2513.617°N	80.5210.042°W	1359.37	125.952	4.56	0.32	-4.55	
7933.00	89.320	161.300	6544.84	1214.95	-888.92	1128.22	1677311.51	14314956.76	39.2512.718°N	80.5209.690°W	1438.34	128.235	3.57	-0.42	-3.55	
8027.00	89.690	160.710	6545.66	1308.94	-977.80	1158.81	1677342.09	14314867.92	39.2511.840°N	80.5209.302°W	1516.23	130.157	0.74	0.39	-0.63	
8121.00	89.350	161.680	6546.44	1402.93	-1066.78	1189.11	1677372.38	14314778.98	39.2510.960°N	80.5208.917°W	1597.50	131.896	1.09	-0.36	1.03	
8215.00	89.910	163.270	6547.05	1496.86	-1156.41	1217.42	1677400.67	14314688.38	39.2510.073°N	80.5208.558°W	1679.11	133.528	1.79	0.60	1.69	
8310.00	88.830	164.000	6548.09	1591.71	-1247.56	1244.18	1677427.42	14314598.27	39.2509.172°N	80.5208.219°W	1761.93	135.078	1.37	-1.14	0.77	
8404.00	90.000	164.330	6549.05	1685.51	-1337.98	1269.83	1677453.06	14314507.88	39.2508.278°N	80.5207.894°W	1844.63	136.497	1.29	1.24	0.35	
8498.00	89.180	160.490	6549.91	1779.44	-1427.57	1298.23	1677481.45	14314418.33	39.2507.392°N	80.5207.534°W	1929.60	137.717	4.09	-1.19	-4.09	
8593.00	89.780	159.530	6549.94	1874.43	-1516.84	1330.71	1677513.91	14314329.09	39.2506.510°N	80.5207.121°W	2017.82	138.740	1.09	-0.42	-1.01	
8687.00	89.600	159.490	6549.45	1968.42	-1604.90	1363.61	1677546.81	14314241.08	39.2505.639°N	80.5206.704°W	2105.97	139.647	0.20	-0.19	-0.04	
8781.00	89.540	160.070	6549.15	2062.39	-1693.91	1393.77	1677576.96	14314152.10	39.2504.759°N	80.5206.321°W	2193.61	140.552	3.81	-0.06	3.81	
8875.00	90.120	162.840	6550.43	2156.30	-1783.78	1421.33	1677604.50	14314062.27	39.2503.870°N	80.5205.972°W	2280.80	141.452	0.66	0.62	-0.24	
8969.00	90.710	156.680	6549.75	2250.22	-1871.63	1454.59	1677637.75	14313974.45	39.2503.001°N	80.5205.550°W	2370.41	142.146	7.64	0.63	-7.62	
9063.00	89.570	157.350	6549.52	2343.99	-1957.83	1492.05	1677675.19	14313888.28	39.2502.149°N	80.5205.074°W	2461.57	142.689	2.15	-1.21	1.78	
9157.00	89.850	159.690	6550.00	2437.92	-2045.30	1526.47	1677709.60	14313800.85	39.2501.284°N	80.5204.637°W	2552.13	143.265	2.51	0.30	2.49	
9251.00	90.430	156.750	6549.77	2531.84	-2132.58	1561.34	1677744.46	14313713.61	39.2500.421°N	80.5204.194°W	2643.04	143.791	3.19	0.62	-3.13	
9346.00	90.090	154.820	6549.34	2626.52	-2219.21	1600.31	1677783.40	14313627.00	39.2459.564°N	80.5203.699°W	2738.04	144.204	2.06	-0.36	-2.03	
9440.00	91.750	153.190	6547.83	2719.80	-2303.69	1641.50	1677824.58	14313542.56	39.2458.728°N	80.5203.176°W	2828.69	144.528	2.47	-1.73	-1.73	
9535.00	90.620	147.810	6545.86	2813.41	-2386.32	1688.25	1677871.31	14313459.96	39.2457.911°N	80.5202.582°W	2923.14	144.722	5.79	-1.19	-5.66	
9629.00	89.660	152.950	6545.63	2905.92	-2468.01	1734.69	1677917.74	14313378.31	39.2457.103°N	80.5201.992°W	3016.66	144.898	5.56	-1.02	5.47	
9723.00	90.050	157.360	6545.86	2999.50	-2553.29	1774.18	1677957.21	14313293.06	39.2456.259°N	80.5201.490°W	3109.18	145.206	4.71	0.43	4.69	
9817.00	89.940	161.820	6545.86	3093.46	-2641.36	1806.95	1677989.97	14313205.02	39.2455.388°N	80.5201.074°W	3200.29	145.624	4.75	-0.13	4.74	
9912.00	89.820	166.680	6546.06	3188.29	-2732.55	1833.53	1678016.54	14313113.87	39.2454.487°N	80.5200.737°W	3290.69	146.139	4.07	-0.13	4.06	

RECEIVED
Office of Oil and Gas

JUN 19 2018

WV Department of
Environmental Protection



Actual Wellpath Report

Deulley Unit 1H AWP Proj: 18005

Page 6 of 10



Operator	Area	Field	Facility
ANTERO RESOURCES CORPORATION	Tyler County, WV	Tyler	Edna Monroe Pad
	Well	Wellbore	Deulley Unit 1H AWB
	Deulley Unit 1H		
	Slot #06		

WELLPATH DATA (207 stations)

MD	Inclination	Azimuth	TVD	Vent Sect	North	East	Grid East	Grid North	Latitude	Longitude	Closure Dist	Closure Dir	DLS	Buidl Rate	Turn Rate	Comments
M	D	D	M	D	D	D	M	M	D	D	M	D	D	D	D	D
10006.00	89.420	168.290	6546.68	3281.67	-2824.13	1854.70	1678037.69	14313022.33	39°24'53.581"N	80°52'00.469"W	3378.70	146.706	2.81	-0.43	2.78	
10101.00	89.820	172.240	6547.31	3375.27	-2917.74	1870.76	1678053.75	14312928.76	39°24'52.656"N	80°52'00.267"W	3465.97	147.333	4.18	0.42	4.16	
10195.00	91.600	172.570	6546.15	3467.22	-3010.90	1883.18	1678066.16	14312835.63	39°24'51.735"N	80°52'00.110"W	3551.32	147.976	1.93	1.89	0.35	
10289.00	89.910	162.820	6544.91	3560.56	-3102.62	1903.19	1678086.16	14312743.95	39°24'50.828"N	80°51'59.857"W	3639.83	148.475	10.53	-1.80	-10.37	
10384.00	89.020	159.120	6545.80	3655.33	-3192.41	1934.16	1678117.12	14312654.20	39°24'49.940"N	80°51'59.464"W	3732.62	148.790	4.01	-0.94	-3.89	
10478.00	89.230	161.430	6547.23	3749.31	-3280.88	1965.88	1678148.83	14315655.77	39°24'49.066"N	80°51'59.062"W	3824.76	149.070	2.47	0.22	2.46	
10572.00	88.370	160.960	6549.20	3843.28	-3369.84	1996.17	1678179.11	14312476.84	39°24'48.186"N	80°51'58.677"W	3916.70	149.359	1.04	-0.91	-0.50	
10667.00	89.050	160.560	6551.34	3938.25	-3459.51	2027.47	1678210.39	14312387.21	39°24'47.299"N	80°51'58.280"W	4009.84	149.627	0.83	0.72	-0.42	
10761.00	89.420	167.970	6552.59	3547.40	-3547.40	2060.74	1678243.65	14312299.35	39°24'46.430"N	80°51'57.858"W	4102.53	149.847	2.78	0.39	-2.76	
10855.00	89.140	154.990	6553.77	4126.97	-3633.58	2098.25	1678281.15	14312213.21	39°24'45.678"N	80°51'57.382"W	4196.89	149.985	3.18	-0.30	-3.17	
10949.00	88.650	156.410	6555.59	4219.63	-3719.23	2136.92	1678319.80	14312127.59	39°24'44.731"N	80°51'56.991"W	4289.42	150.120	1.60	-0.52	1.51	
11043.00	88.620	161.340	6557.83	4313.53	-3806.86	2170.78	1678353.65	14312039.99	39°24'43.864"N	80°51'56.461"W	4382.29	150.307	5.24	-0.03	5.24	
11137.00	90.180	162.210	6558.81	4407.50	-3896.14	2200.17	1678383.03	14311950.75	39°24'42.981"N	80°51'56.088"W	4474.45	150.546	1.90	1.66	0.83	
11231.00	89.820	160.150	6558.81	4501.49	-3985.11	2230.50	1678413.34	14311861.82	39°24'42.101"N	80°51'55.703"W	4566.86	150.764	2.22	-0.38	-2.19	
11326.00	90.310	158.630	6558.70	4596.47	-4074.03	2263.93	1678446.77	14311772.94	39°24'41.222"N	80°51'55.279"W	4660.80	150.939	1.68	0.52	-1.60	
11420.00	90.060	158.410	6558.40	4690.41	-4161.50	2298.36	1678481.17	14311685.50	39°24'40.357"N	80°51'54.842"W	4754.00	151.089	0.35	-0.27	-0.23	
11514.00	90.580	154.530	6557.88	4784.16	-4247.66	2335.87	1678518.68	14311599.37	39°24'39.505"N	80°51'54.366"W	4847.57	151.193	4.16	0.55	-4.13	
11608.00	89.690	155.570	6557.65	4877.74	-4332.89	2375.53	1678558.31	14311514.18	39°24'38.662"N	80°51'53.862"W	4941.36	151.266	1.46	-0.95	1.11	
11703.00	89.780	158.190	6558.09	4972.55	-4420.25	2412.82	1678595.60	14311426.85	39°24'37.798"N	80°51'53.389"W	5035.90	151.372	2.76	0.09	2.76	
11797.00	89.320	160.900	6558.83	5066.52	-4508.31	2445.67	1678628.43	14311338.82	39°24'36.927"N	80°51'52.972"W	5128.95	151.521	2.92	-0.49	2.88	
11891.00	88.880	166.310	6560.33	5160.33	-4598.44	2472.19	1678654.94	14311248.73	39°24'36.036"N	80°51'52.636"W	5220.66	151.737	5.78	-0.49	5.76	
11985.00	90.620	168.980	6560.75	5253.58	-4690.25	2492.30	1678675.04	14311156.95	39°24'35.128"N	80°51'52.381"W	5311.31	152.015	3.40	1.87	2.84	
12079.00	90.340	165.360	6559.97	5346.92	-4781.89	2513.17	1678695.90	14311065.36	39°24'34.222"N	80°51'52.117"W	5402.08	152.275	3.86	-0.30	-3.85	
12174.00	90.340	161.180	6559.40	5441.79	-4872.85	2540.51	1678723.23	14310974.44	39°24'33.323"N	80°51'51.771"W	5495.34	152.464	4.40	0.00	-4.40	
12268.00	90.120	158.590	6559.02	5535.77	-4961.10	2572.83	1678755.54	14310886.21	39°24'32.450"N	80°51'51.360"W	5588.56	152.589	2.77	-0.23	-2.76	
12362.00	89.880	156.970	6559.02	5629.67	-5048.12	2608.38	1678791.08	14310799.23	39°24'31.589"N	80°51'50.909"W	5682.18	152.674	1.74	-0.26	-1.72	
12456.00	89.490	159.870	6559.55	5723.59	-5135.52	2642.95	1678825.63	14310711.87	39°24'30.725"N	80°51'50.471"W	5775.70	152.768	3.11	-0.43	3.09	
12550.00	89.850	162.480	6560.10	5817.58	-5224.48	2673.28	1678855.95	14310622.94	39°24'29.845"N	80°51'50.086"W	5868.70	152.902	2.80	0.39	2.78	
12645.00	90.060	160.490	6560.17	5912.56	-5314.56	2703.44	1678886.10	14310532.90	39°24'28.955"N	80°51'49.703"W	5962.65	153.038	2.11	0.22	-2.09	
12739.00	89.970	158.580	6560.15	6006.54	-5402.62	2736.31	1678918.95	14310444.87	39°24'28.084"N	80°51'49.285"W	6056.05	153.139	2.03	-0.10	-2.03	

RECEIVED
Office of Oil and Gas

WV Department of
Environmental Protection

JUN 19 2018



Actual Wellpath Report

Deulley Unit 1H AWP Proj: 18005

Page 7 of 10

Operator	ANTERO RESOURCES CORPORATION
Area	Tyler County, WV
Field	Tyler
Facility	Edna Monroe Pad
Slot	Slot #06
Well	Deulley Unit 1H
Wellbore	Deulley Unit 1H AWB

REFERENCE WELLPATH IDENTIFICATION

MD	Inclination	Azimuth	TVD	Vent Sect	North	East	Grid East	Grid North	Latitude	Longitude	Closure Dist	Closure Dir	DLS	Build Rate	Turn Rate	Comments
[m]	[°]	[°]	[m]	[°]	[m]	[m]	[m]	[m]	[°]	[°]	[m]	[°]	[m/100ft]	[°/100ft]	[°/100ft]	
12831.00	89.720	161.100	6560.40	-5488.53	2768.01	1678950.54	14310358.55	39°24'27.23"N	80°51'48.884"W	6147.42	153.239	2.75	-0.27	2.74	-0.04	
12927.00	90.030	161.060	6560.61	-5579.79	2799.14	1678981.76	14310267.77	39°24'26.332"N	80°51'48.489"W	6242.54	153.359	0.33	0.32	-0.04		
13022.00	90.090	156.510	6560.51	-6289.46	2833.51	1679016.11	14310179.27	39°24'25.456"N	80°51'48.053"W	6337.09	153.440	4.79	0.06	-4.79		
13116.00	89.820	159.060	6560.58	-6383.34	2869.04	1679051.64	14310092.29	39°24'24.596"N	80°51'47.602"W	6430.82	153.504	2.73	-0.29	2.71		
13211.00	89.940	164.330	6560.78	-6478.29	2898.87	1679081.45	14310002.16	39°24'23.704"N	80°51'47.224"W	6524.83	153.623	5.55	0.13	-5.55		
13305.00	90.620	161.650	6560.32	-6572.19	2926.37	1679108.94	14309912.32	39°24'22.815"N	80°51'46.875"W	6617.58	153.755	2.94	0.72	-2.85		
13400.00	90.220	157.820	6559.62	-6667.16	2959.26	1679141.82	14309823.26	39°24'21.934"N	80°51'46.458"W	6712.05	153.839	4.05	-0.42	-4.03		
13494.00	89.780	156.680	6559.62	-6761.01	2995.61	1679178.15	14309736.61	39°24'21.077"N	80°51'45.996"W	6805.89	153.887	1.30	-0.47	-1.21		
13588.00	89.910	162.000	6559.80	-6854.96	3028.77	1679211.29	14309648.72	39°24'20.208"N	80°51'45.576"W	6899.44	153.961	5.66	0.14	-5.66		
13683.00	90.310	166.290	6559.70	-6949.74	3054.72	1679237.23	14309557.39	39°24'19.304"N	80°51'45.247"W	6992.94	154.098	4.54	0.42	-4.52		
13777.00	91.170	163.050	6558.48	-7043.47	3079.56	1679262.07	14309466.79	39°24'18.408"N	80°51'44.932"W	7085.34	154.238	3.57	0.91	-3.45		
13871.00	90.060	161.180	6557.47	-7137.42	3108.43	1679290.92	14309377.38	39°24'17.523"N	80°51'44.566"W	7178.45	154.341	2.31	-1.18	-1.99		
13966.00	90.000	162.760	6557.42	-7232.38	3137.83	1679320.31	14309287.09	39°24'16.630"N	80°51'44.193"W	7272.62	154.440	1.66	-0.06	1.66		
14060.00	90.090	164.100	6557.35	-7326.25	3164.64	1679347.11	14309197.03	39°24'15.739"N	80°51'43.854"W	7365.48	154.554	1.43	0.10	1.43		
14154.00	90.150	165.190	6557.15	-7420.15	3191.89	1679374.35	14309107.11	39°24'14.850"N	80°51'43.508"W	7458.43	154.662	2.03	0.06	-2.03		
14248.00	90.430	156.350	6556.68	-7514.08	3225.15	1679407.60	14309019.27	39°24'13.981"N	80°51'43.086"W	7552.09	154.719	6.22	0.30	-6.21		
14342.00	89.720	156.420	6556.55	-7607.84	3262.80	1679445.24	14308933.17	39°24'13.129"N	80°51'42.608"W	7646.05	154.740	0.76	-0.76	0.07		
14436.00	89.690	161.400	6557.04	-7701.78	3296.62	1679479.04	14308845.53	39°24'12.262"N	80°51'42.179"W	7739.77	154.790	5.30	-0.03	5.30		
14531.00	89.820	165.220	6557.44	-7796.64	3323.89	1679506.30	14308754.59	39°24'11.362"N	80°51'41.833"W	7833.72	154.893	4.02	0.14	-4.02		
14626.00	89.970	165.750	6557.62	-7890.28	3347.45	1679529.85	14308663.63	39°24'10.463"N	80°51'41.535"W	7926.14	155.018	0.59	0.16	0.56		
14719.00	89.450	163.190	6558.09	-7984.04	3372.62	1679555.01	14308573.10	39°24'09.567"N	80°51'41.216"W	8018.87	155.128	2.78	-0.55	-2.72		
14813.00	89.750	167.690	6558.75	-8078.01	3404.08	1679586.45	14308484.60	39°24'08.692"N	80°51'40.817"W	8112.43	155.190	5.86	0.32	-5.85		
14907.00	89.450	152.410	6559.41	-8171.55	3443.71	1679626.07	14308399.44	39°24'07.849"N	80°51'40.314"W	8206.39	155.188	5.63	-0.32	-5.62		
15002.00	88.740	157.060	6560.91	-8266.04	3484.24	1679666.59	14308313.60	39°24'07.000"N	80°51'39.799"W	8301.35	155.183	4.95	-0.75	-4.89		
15096.00	89.290	160.730	6562.52	-8359.97	3518.08	1679700.41	14308225.96	39°24'06.133"N	80°51'39.370"W	8395.13	155.225	3.95	0.59	3.90		
15190.00	89.450	160.770	6563.56	-8453.96	3549.07	1679731.39	14308137.26	39°24'05.255"N	80°51'38.977"W	8488.69	155.286	0.18	0.17	0.04		
15284.00	89.480	159.760	6564.43	-8547.96	3580.81	1679763.11	14308048.82	39°24'04.380"N	80°51'38.575"W	8582.33	155.340	1.07	0.03	-1.07		
15378.00	89.600	159.910	6565.19	-8641.95	3613.21	1679795.50	14307960.62	39°24'03.508"N	80°51'38.163"W	8676.04	155.389	0.20	0.13	0.16		
15473.00	89.600	160.270	6565.85	-8736.94	3645.56	1679827.84	14307871.34	39°24'02.624"N	80°51'37.753"W	8770.73	155.440	0.38	0.00	0.38		
15567.00	89.600	160.810	6566.51	-8830.94	3676.88	1679859.15	14307782.75	39°24'01.748"N	80°51'37.356"W	8864.35	155.494	0.57	0.00	0.57		

WELLPATH DATA (207 stations)

RECEIVED
Office of Oil and Gas
JUN 19 2018
WV Department of
Environmental Protection



Actual Wellpath Report

Deuley Unit 1H AWP Proj: 18005

Page 8 of 10



Operator	Area	Field	Facility
ANTERO RESOURCES CORPORATION	Tyler County, WV	Tyler	Edna Monroe Pad
		Well	Deuley Unit 1H
		Deuley Unit 1H AWB	
		Slot	Slot #06

REFERENCE WELLPATH IDENTIFICATION

MD	Inclination	Azimuth	TVD	Vent Sect	North	East	Grid East	Grid North	Latitude	Longitude	Closure Dir	Dir	DLS	Buidl Rate	Turn Rate	Comments
ft	ft	ft	ft	ft	ft	ft	ft	ft	ft	ft	ft	ft	ft	ft/100ft	ft/100ft	ft/100ft
15661.00	89.600	6567.16	8924.94	-8154.63	3707.64	167.9889.90	14307693.96	39.2400.870	39.2338.960	80.5127.317	W	11292.04	156.688	0.00	0.00	Projected MD at TD - 18005'
17556.00	89.630	6567.80	9019.93	-8244.53	3738.37	167.9920.61	14307604.11	39.2339.981	80.5136.576	W	9052.49	155.609	0.32	0.03	0.32	
15560.00	89.660	6568.39	9113.91	-8333.63	3768.31	167.9950.54	14307515.04	39.2359.100	80.5136.197	W	9146.01	155.668	0.31	0.03	0.31	
15944.00	89.720	6568.89	9207.85	-8423.25	3796.65	167.9978.87	14307425.46	39.2358.213	80.5135.837	W	9239.35	155.737	1.87	0.06	1.87	
16038.00	89.780	6569.30	9301.81	-8512.58	3825.88	1680008.09	14307336.16	39.2357.330	80.5135.467	W	9332.81	155.799	3.09	0.06	-3.09	
16133.00	89.780	6569.67	9396.75	-8601.08	3860.37	1680042.57	14307247.70	39.2356.455	80.5135.029	W	9427.67	155.828	3.62	0.00	-3.62	
16227.00	89.450	6570.30	9490.65	-8688.11	3895.86	1680078.04	14307160.70	39.2355.594	80.5134.579	W	9521.61	155.848	1.79	-0.35	1.76	
16321.00	89.720	6570.98	9584.62	-8775.98	3929.27	1680111.43	14307072.87	39.2354.725	80.5134.155	W	9615.45	155.881	1.19	0.29	1.16	
16415.00	89.630	6571.52	9678.61	-8864.17	3961.78	1680143.93	14306984.71	39.2353.853	80.5133.743	W	9709.23	155.918	0.12	-0.10	0.07	
16509.00	89.690	6572.07	9772.60	-8952.37	3994.28	1680176.42	14306896.54	39.2352.981	80.5133.330	W	9803.02	155.955	0.09	-0.06	-0.06	
16604.00	89.720	6572.56	9867.59	-9041.55	4027.01	1680208.14	14306807.40	39.2352.099	80.5132.915	W	9897.80	155.992	0.22	0.03	0.22	
16698.00	89.750	6573.00	9961.57	-9130.68	4056.84	1680238.96	14306718.31	39.2351.217	80.5132.537	W	9991.36	156.044	3.29	0.03	3.29	
16792.00	89.660	6573.48	10055.50	-9220.35	4085.06	1680267.16	14306628.68	39.2350.331	80.5132.179	W	10084.76	156.104	1.08	-0.10	-1.07	
16887.00	89.750	6573.97	10150.49	-9310.11	4116.13	1680298.22	14306538.95	39.2349.443	80.5131.785	W	10179.43	156.149	2.37	0.09	-2.37	
16981.00	89.630	6574.46	10244.46	-9397.93	4149.66	1680331.73	14306451.17	39.2348.575	80.5131.360	W	10273.30	156.176	1.44	-0.13	-1.44	
17075.00	89.660	6575.06	10338.41	-9485.40	4184.07	1680366.13	14306363.73	39.2347.710	80.5130.923	W	10367.22	156.197	0.20	0.03	0.20	
17169.00	89.940	6575.39	10432.38	-9573.29	4217.41	1680399.46	14306275.88	39.2346.841	80.5130.500	W	10461.09	156.225	1.32	0.30	1.29	
17263.00	89.850	6575.56	10526.38	-9661.75	4249.17	1680431.21	14306187.45	39.2345.966	80.5130.098	W	10554.86	156.260	0.90	-0.10	0.89	
17358.00	89.910	6575.76	10621.32	-9752.23	4278.10	1680460.13	14306097.01	39.2345.071	80.5129.731	W	10649.33	156.314	3.37	0.06	3.37	
17452.00	89.970	6575.86	10715.07	-9842.86	4303.03	1680485.05	14306006.41	39.2344.175	80.5129.415	W	10742.35	156.386	1.60	0.06	1.60	
17546.00	89.910	6575.96	10808.87	-9933.28	4328.72	1680510.72	14305916.03	39.2343.281	80.5129.090	W	10835.49	156.453	2.62	-0.06	-2.62	
17640.00	89.910	6576.11	10902.72	-10023.51	4355.06	1680537.05	14305825.84	39.2342.389	80.5128.756	W	10928.73	156.516	1.73	0.00	1.73	
17734.00	89.880	6576.28	10996.55	-10113.81	4381.16	1680563.14	14305735.57	39.2341.496	80.5128.426	W	11021.96	156.578	1.40	-0.03	-1.40	
17828.00	89.970	6576.40	11090.48	-10203.48	4409.35	1680591.33	14305645.94	39.2340.609	80.5128.068	W	11115.46	156.629	1.44	0.10	-1.44	
17922.00	90.000	6576.43	11184.47	-10292.55	4439.40	1680621.36	14305555.91	39.2339.728	80.5127.687	W	11209.14	156.668	1.09	0.03	-1.09	
17980.00	89.880	6576.49	11242.46	-10346.95	4459.48	1680641.44	14305502.52	39.2339.190	80.5127.433	W	11267.05	156.684	3.85	-0.21	-3.84	
18005.00	89.880	6576.54	11267.45	-10370.23	4468.60	1680650.55	14305479.25	39.2338.960	80.5127.317	W	11292.04	156.688	0.00	0.00	0.00	Projected MD at TD - 18005'

RECEIVED
Office of Oil and Gas
JUN 19 2018
WV Department of
Environmental Protection



Actual Wellpath Report

Deulley Unit 1H AWP Proj: 18005'

Page 9 of 10



REFERENCE WELLPATH IDENTIFICATION			
Operator	ANTERO RESOURCES CORPORATION	Slot	Slot #06
Area	Tyler County, WV	Well	Deulley Unit 1H
Field	Tyler	Wellbore	Deulley Unit 1H AWB
Facility	Edna Monroe Pad		

HOLE & CASING SECTIONS - Ref Wellbore: Deulley Unit 1H AWB Ref Wellpath: Deulley Unit 1H AWP Proj: 18005'										
String/Diameter	Start MD [ft]	End MD [ft]	Interval [ft]	Start TVD [ft]	End TVD [ft]	Start N/S [ft]	Start E/W [ft]	End N/S [ft]	End E/W [ft]	
20in Conductor	25.00	100.00	75.00	25.00	100.00	0.00	0.00	0.14	0.06	0.06
17.5in Open Hole	100.00	550.00	450.00	100.00	550.00	0.14	0.06	-0.09	0.40	0.40
13.375in Casing Intermediate	25.00	550.00	525.00	25.00	550.00	0.00	0.00	-0.09	0.40	0.40
12.25in Open Hole	550.00	2616.00	2066.00	550.00	2614.18	-0.09	0.40	0.88	34.17	34.17
9.625in Casing Intermediate	25.00	2616.00	2591.00	25.00	2614.18	0.00	0.00	0.88	34.17	34.17

TARGETS								
Name	TVD [ft]	North [ft]	East [ft]	Grid East [US ft]	Grid North [US ft]	Latitude	Longitude	Shape
Deulley Unit 1H POE Rev-2	6506.00	172.58	754.13	1676937.56	14316017.84	39°25'23.215"N	80°52'14.437"W	point
Deulley Unit 1H BHL Rev-2	6532.00	-10367.44	4492.65	1680674.59	14305482.04	39°23'38.987"N	80°51'27.010"W	point
Deulley Unit 1H LP Rev-2	6532.00	26.12	806.08	1676989.50	14315871.43	39°25'21.767"N	80°52'13.778"W	point

WELLPATH COMPOSITION - Ref Wellbore: Deulley Unit 1H AWB Ref Wellpath: Deulley Unit 1H AWP Proj: 18005'				
Start MD [ft]	End MD [ft]	Positional Uncertainty Model	Log Name/Comment	Wellbore
25.00	5644.00	Gyrodata standard - Drop gyro or Multi-shot	03_Gyrodata MS Gyro <8-3/4"> (100'-5632')	Deulley Unit 1H AWB
5644.00	17980.00	BHI AutoTrak Curve (Short)	04_BHI AT Curve <8-1/2"> (5644')(5763'-17980')	Deulley Unit 1H AWB
17980.00	18005.00	Blind Drilling (std)	Projection to bit	Deulley Unit 1H AWB

RECEIVED
Office of Oil and Gas

JUN 19 2018

WV Department of
Environmental Protection



Actual Wellpath Report

Deulley Unit 1H AWP Proj: 18005'

Page 10 of 10



REFERENCE WELLPATH IDENTIFICATION			
Operator	ANTERO RESOURCES CORPORATION	Slot	Slot #06
Area	Tyler County, WV	Well	Deulley Unit 1H
Field	Tyler	Wellbore	Deulley Unit 1H AWB
Facility	Edna Monroe Pad		

COMMENTS
<p>Wellpath general comments API: 47-095-02359-0000 BHI Job #: 8354425 Rig: Patterson 343 Duration: 01/18/2017-01/22/2017 Gyrodatta MS Gyro <8-3/4"> (100'-5632') BHI AT Curve <8-1/2"> (5644')(5763'-17980') Middlesex: 6488' MD Burket: 6655' MD Tully: 6721' MD Marcellus POE: 6811' MD Projected MD at TD: 18005'</p>

RECEIVED
Office of Oil and Gas

JUN 19 2018

WV Department of
Environmental Protection