

# ANTERO RESOURCES CORPORATION

Location: Tyler County, WV  
 Field: Tyler  
 Facility: Weigle East Pad  
 Slot: Slot #14  
 Well: Owens Unit 1H  
 Wellbore: Owens Unit 1H PWB

Grid System: NAD27 / UTM Zone 17 North, US feet  
 \* = Wellpath was transformed from a different geodetic datum  
 North Reference: Grid north  
 Scale: True distance  
 Depths are in feet  
 Created by: hareluk on 2016-10-24  
 Database: WA\_MPL\_EASTERNUS\_Defn

### Well Data

Slot	Well	Wellbore	Wellpath
Slot #14	Owens Unit 1H	Owens Unit 1H AWB	Owens Unit 1H AWP Proj. 14830*
Slot #14	Owens Unit 1H	Owens Unit 1H PWB	Owens Unit 1H PWP Rev-A.0

### Location Information

Facility Name	Grid East (US ft)	Grid North (US ft)	Latitude	Longitude
Weigle East Pad	1681952.790	14331721.120	39°27'58.404"N	80°51'10.177"W
Slot #14	-15.49	43.75	39°27'58.250"N	80°51'09.620"W
Comment: Owens Unit 1H	1681996.520	14331705.640	39°27'58.250"N	80°51'09.620"W
PD 525 (RXB) to Mud line (At Slot: Slot #14)			19ft	
Mean Sea Level to Mud line (At Slot: Slot #14)			-812ft	
PD 525 (RXB) to Mean Sea Level			831ft	

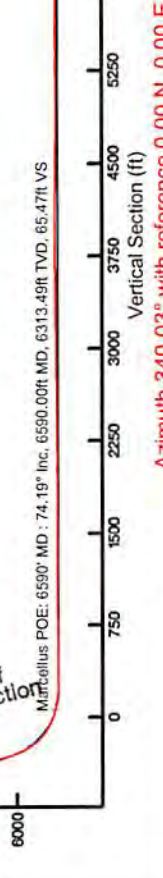
Gyrodata MS Gyro <8-3/4">(100°-5454') : 0.13° Inc, 100.00ft MD, 100.00ft TVD, -0.09ft VS



1 line specified Dip: 08.84° East 52108.41  
 Magnetic North is 7.25 degrees West of True North (at 10000 ft)  
 To convert Azimuth from True to Grid subtract 7.25 degrees  
 To convert Azimuth from Magnetic to Grid add 8.74 degrees

API: 47-095-02366-00-00  
 BHI Job #: 8164458  
 Rig: Precision 525  
 Duration: 10.10.2016 - 10.12.2016

RECEIVED  
 Office of Oil and Gas  
 MAR 29 2019  
 WV Department of Environmental Protection  
 BHI Job # 8164458



Projected MD at TD: 14830° : 6297.41ft TVD, 8000.28ft N, 2268.82ft W

Marcellus POE: 6590° MD : 74.19° Inc, 6590.00ft MD, 6313.49ft TVD, 65.47ft VS

Gyrodata MS Gyro <8-3/4">(100°-5454') : 100.00ft TVD, 0.09ft S, 0.03ft E

BHI AT Curve <8-1/2">(5454°/5501°-14806') : 5433.64ft TVD, 155.65ft S, 543.72ft E

Projected MD at TD: 14830° : 90.37° Inc, 14830.00ft MD, 6297.41ft TVD, 8294.10ft VS

Scale: 1 inch = 1500

Azimuth 340.03° with reference 0.00 N, 0.00 E

Scale: 1 inch = 1500

Scale: 1 inch = 1500

Scale: 1 inch = 1500

Scale: 1 inch = 1500

Scale: 1 inch = 1500

Scale: 1 inch = 1500

Scale: 1 inch = 1500

Scale: 1 inch = 1500

Scale: 1 inch = 1500

Scale: 1 inch = 1500

Scale: 1 inch = 1500

Scale: 1 inch = 1500

Scale: 1 inch = 1500

Scale: 1 inch = 1500

Scale: 1 inch = 1500

Scale: 1 inch = 1500

Scale: 1 inch = 1500

Scale: 1 inch = 1500

Scale: 1 inch = 1500

Scale: 1 inch = 1500

Scale: 1 inch = 1500

Scale: 1 inch = 1500

Scale: 1 inch = 1500

Scale: 1 inch = 1500

Scale: 1 inch = 1500

Scale: 1 inch = 1500

Scale: 1 inch = 1500

Scale: 1 inch = 1500

Scale: 1 inch = 1500

Scale: 1 inch = 1500

Scale: 1 inch = 1500

Scale: 1 inch = 1500

Scale: 1 inch = 1500

Scale: 1 inch = 1500

Scale: 1 inch = 1500

Scale: 1 inch = 1500

Scale: 1 inch = 1500

Scale: 1 inch = 1500

Scale: 1 inch = 1500

Scale: 1 inch = 1500

Scale: 1 inch = 1500

Scale: 1 inch = 1500

Scale: 1 inch = 1500

Scale: 1 inch = 1500

Scale: 1 inch = 1500

Scale: 1 inch = 1500

Scale: 1 inch = 1500

Scale: 1 inch = 1500

Scale: 1 inch = 1500

Scale: 1 inch = 1500

Scale: 1 inch = 1500

Scale: 1 inch = 1500

Scale: 1 inch = 1500

Scale: 1 inch = 1500

Scale: 1 inch = 1500

Scale: 1 inch = 1500

Scale: 1 inch = 1500

Scale: 1 inch = 1500

Scale: 1 inch = 1500

Scale: 1 inch = 1500

Scale: 1 inch = 1500

Scale: 1 inch = 1500

Scale: 1 inch = 1500

Scale: 1 inch = 1500

Scale: 1 inch = 1500

Scale: 1 inch = 1500

Scale: 1 inch = 1500

Scale: 1 inch = 1500

Scale: 1 inch = 1500

Scale: 1 inch = 1500

Scale: 1 inch = 1500

Scale: 1 inch = 1500

Scale: 1 inch = 1500

Scale: 1 inch = 1500

Scale: 1 inch = 1500

Scale: 1 inch = 1500

Scale: 1 inch = 1500

Scale: 1 inch = 1500

Scale: 1 inch = 1500

Scale: 1 inch = 1500

Scale: 1 inch = 1500

Scale: 1 inch = 1500

Scale: 1 inch = 1500

Scale: 1 inch = 1500

Scale: 1 inch = 1500

Scale: 1 inch = 1500

Scale: 1 inch = 1500

Scale: 1 inch = 1500

Scale: 1 inch = 1500

Scale: 1 inch = 1500

Scale: 1 inch = 1500

Scale: 1 inch = 1500

Scale: 1 inch = 1500

Scale: 1 inch = 1500

Scale: 1 inch = 1500

Scale: 1 inch = 1500

Scale: 1 inch = 1500

Scale: 1 inch = 1500

Scale: 1 inch = 1500

Scale: 1 inch = 1500

Scale: 1 inch = 1500

Scale: 1 inch = 1500

Scale: 1 inch = 1500

Scale: 1 inch = 1500

Scale: 1 inch = 1500

Scale: 1 inch = 1500

Scale: 1 inch = 1500

Scale: 1 inch = 1500

Scale: 1 inch = 1500

Scale: 1 inch = 1500

Scale: 1 inch = 1500

Scale: 1 inch = 1500

Scale: 1 inch = 1500

Scale: 1 inch = 1500

Scale: 1 inch = 1500

Scale: 1 inch = 1500

Scale: 1 inch = 1500

Scale: 1 inch = 1500

Scale: 1 inch = 1500

Scale: 1 inch = 1500

Scale: 1 inch = 1500

Scale: 1 inch = 1500

Scale: 1 inch = 1500

Scale: 1 inch = 1500

Scale: 1 inch = 1500

Scale: 1 inch = 1500

Scale: 1 inch = 1500

Scale: 1 inch = 1500

Scale: 1 inch = 1500

Scale: 1 inch = 1500

Scale: 1 inch = 1500

Scale: 1 inch = 1500

Scale: 1 inch = 1500

Scale: 1 inch = 1500

Scale: 1 inch = 1500

Scale: 1 inch = 1500

Scale: 1 inch = 1500

Scale: 1 inch = 1500

Scale: 1 inch = 1500

Scale: 1 inch = 1500

Scale: 1 inch = 1500

Scale: 1 inch = 1500

Scale: 1 inch = 1500

Scale: 1 inch = 1500

Scale: 1 inch = 1500

Scale: 1 inch = 1500

Scale: 1 inch = 1500

Scale: 1 inch = 1500

Scale: 1 inch = 1500

Scale: 1 inch = 1500

Scale: 1 inch = 1500

Scale: 1 inch = 1500

Scale: 1 inch = 1500

Scale: 1 inch = 1500

Scale: 1 inch = 1500

Scale: 1 inch = 1500

Scale: 1 inch = 1500

Scale: 1 inch = 1500

Scale: 1 inch = 1500

Scale: 1 inch = 1500

Scale: 1 inch = 1500

Scale: 1 inch = 1500

Scale: 1 inch = 1500

Scale: 1 inch = 1500

Scale: 1 inch = 1500

Scale: 1 inch = 1500

Scale: 1 inch = 1500

Scale: 1 inch = 1500

Scale: 1 inch = 1500

Scale: 1 inch = 1500

Scale: 1 inch = 1500

Scale: 1 inch = 1500

Scale: 1 inch = 1500

Scale: 1 inch = 1500

Scale: 1 inch = 1500

Scale: 1 inch = 1500

Scale: 1 inch = 1500

Scale: 1 inch = 1500

Scale: 1 inch = 1500

Scale: 1 inch = 1500

Scale: 1 inch = 1500

Scale: 1 inch = 1500

Scale: 1 inch = 1500

Scale: 1 inch = 1500

Scale: 1 inch = 1500

Scale: 1 inch = 1500

Scale: 1 inch = 1500

Scale: 1 inch = 1500

Scale: 1 inch = 1500

Scale: 1 inch = 1500

Scale: 1 inch = 1500

Scale: 1 inch = 1500

Scale: 1 inch = 1500

Scale: 1 inch = 1500

Scale: 1 inch = 1500

Scale: 1 inch = 1500

Scale: 1 inch = 1500

Scale: 1 inch = 1500

Scale: 1 inch = 1500

Scale: 1 inch = 1500

Scale: 1 inch = 1500

Scale: 1 inch = 1500



# Actual Wellpath Report

Owens Unit 1H AWP Proj: 14830'

Page n of nn



REFERENCE WELLPATH IDENTIFICATION		
Operator	ANTERO RESOURCES CORPORATION	Slot #14
Area	Tyler County, WV	Owens Unit 1H
Field	Tyler	Owens Unit 1H AWB
Facility	Weligle East Pad	

REPORT SETUP INFORMATION		
Projection System	NAD27 / UTM Zone 17 North, US feet	WellArchitect® 5.0
North Reference	Grid	User
Scale	0.999602	Report Generated
Convergence at slot	0.10° East	10/24/2016 at 1:35:24 PM
		Database/Source file
		WA_MPL_EASTERNUS_Defn/Owens_Unit_1H_AWP_Proj_14830_.xml

WELLPATH LOCATION						
	Local coordinates		Grid coordinates		Geographic coordinates	
	North[ft]	East[ft]	Easting[US ft]	Northing[US ft]	Latitude	Longitude
Slot Location	-15.49	43.75	1681996.52	14331705.64	39°27'58.250"N	80°51'09.620"W
Facility Reference Pt			1681952.79	14331721.12	39°27'58.404"N	80°51'10.177"W
Field Reference Pt			0.00	0.00	0°00'00.000"	85°29'19.301"W

WELLPATH DATUM		
Calculation method	Minimum curvature	PD 525 (RKB) to Facility Vertical Datum
Horizontal Reference Pt	Slot	PD 525 (RKB) to Mean Sea Level
Vertical Reference Pt	PD 525 (RKB)	PD 525 (RKB) to Mud Line at Slot (Slot #14)
MD Reference Pt	PD 525 (RKB)	Section Origin
Field Vertical Reference	Mean Sea Level	Section Azimuth
		19.00ft
		831.00ft
		19.00ft
		N 0.00, E 0.00 ft
		340.03°

RECEIVED  
Office of Oil and Gas  
MAR 29 2019  
WV Department of  
Environmental Protection

05/31/2019



# Actual Wellpath Report

Owens Unit 1H AWP Proj: 14830'

Page n of nn



REFERENCE WELLPATH IDENTIFICATION		Slot	Slot #14
Operator	ANTERO RESOURCES CORPORATION	Well	Owens Unit 1H
Area	Tyler County, WV	Wellbore	Owens Unit 1H AWP
Field	Tyler		
Facility	Weigle East Pad		

WELLPATH DATA (181 stations) + = interpolated/extrapolated station																
MD [ft]	Inclination [°]	Azimuth [°]	TVD [ft]	Vert Sect [ft]	North [ft]	East [ft]	Grid East [US ft]	Grid North [US ft]	Latitude	Longitude	Closure Dist [ft]	Closure Dir [°]	DLS [°/100ft]	Build Rate [°/100ft]	Turn Rate [°/100ft]	Comments
0.00	0.000	159.490	0.00	0.00	0.00	0.00	1681996.52	14331705.64	89°27'58.250"N	80°51'09.620"W	0.00	0.000	0.00	0.00	0.00	
19.00	0.000	159.490	19.00	0.00	0.00	0.00	1681996.52	14331705.64	89°27'58.250"N	80°51'09.620"W	0.00	0.000	0.00	0.00	0.00	
100.00	0.130	159.490	100.00	-0.09	-0.09	0.03	1681996.55	14331705.55	89°27'58.249"N	80°51'09.620"W	0.09	159.490	0.16	0.16	196.90	Gyrodatta MS Gyro <8-3/4">(100'-5454')
200.00	0.070	73.710	200.00	-0.21	-0.18	0.13	1681996.65	14331705.46	89°27'58.248"N	80°51'09.618"W	0.22	143.300	0.14	-0.06	-85.78	
300.00	0.100	107.320	300.00	-0.27	-0.18	0.27	1681996.78	14331705.46	89°27'58.248"N	80°51'09.617"W	0.33	124.031	0.06	0.03	33.61	
400.00	0.150	274.310	400.00	-0.27	-0.20	0.23	1681996.75	14331705.44	89°27'58.248"N	80°51'09.617"W	0.30	131.620	0.25	0.05	166.99	
500.00	0.110	334.260	500.00	-0.24	-0.25	0.02	1681996.54	14331705.39	89°27'58.248"N	80°51'09.620"W	0.25	176.086	0.10	-0.04	-40.05	
600.00	0.300	305.090	600.00	-0.05	-0.15	-0.28	1681996.24	14331705.49	89°27'58.249"N	80°51'09.624"W	0.31	241.093	0.28	0.19	70.82	
700.00	0.870	830.410	699.99	0.91	0.66	-0.86	1681995.66	14331706.30	89°27'58.257"N	80°51'09.631"W	1.09	307.305	0.61	0.57	25.33	
800.00	1.640	107.840	799.98	0.79	0.88	0.12	1681996.64	14331706.52	89°27'58.259"N	80°51'09.618"W	0.89	7.953	2.36	0.77	137.43	
900.00	4.160	113.460	899.85	-2.59	-1.00	4.81	1682001.33	14331704.64	89°27'58.240"N	80°51'09.559"W	4.92	101.762	2.53	2.52	5.62	
1000.00	5.060	109.310	999.52	-7.87	-3.90	12.30	1682008.82	14331701.74	89°27'58.211"N	80°51'09.463"W	12.91	107.608	0.96	0.90	-4.15	
1100.00	5.160	109.150	1099.12	-13.50	-6.84	20.71	1682017.22	14331698.80	89°27'58.182"N	80°51'09.356"W	21.81	108.270	0.10	0.10	-0.16	
1200.00	5.420	108.450	1198.70	-19.27	-9.81	29.44	1682025.95	14331695.84	89°27'58.153"N	80°51'09.245"W	31.03	108.425	0.27	0.26	-0.70	
1300.00	5.640	108.860	1298.23	-25.29	-12.89	38.57	1682035.08	14331692.75	89°27'58.122"N	80°51'09.128"W	40.57	108.480	0.22	0.22	0.41	
1400.00	5.820	108.760	1397.73	-31.54	-16.11	48.02	1682044.52	14331689.53	89°27'58.090"N	80°51'09.008"W	50.65	108.547	0.18	0.18	-0.08	
1500.00	5.190	108.520	1497.27	-37.53	-19.18	57.11	1682053.61	14331686.47	89°27'58.060"N	80°51'08.892"W	60.24	108.565	0.63	-0.63	-0.26	
1600.00	3.060	108.240	1597.01	-42.00	-21.45	63.93	1682060.43	14331684.20	89°27'58.037"N	80°51'08.805"W	67.44	108.549	2.13	-2.13	-0.28	
1700.00	0.060	294.200	1796.94	-44.25	-22.67	87.16	1682063.66	14331682.98	89°27'58.025"N	80°51'08.764"W	70.89	108.653	2.17	-2.15	10.73	
1800.00	0.060	336.040	1896.94	-44.81	-23.04	87.81	1682064.30	14331682.61	89°27'58.021"N	80°51'08.756"W	71.62	108.763	0.97	-0.85	175.23	
1900.00	0.340	336.040	1996.94	-44.48	-22.74	67.64	1682064.14	14331682.91	89°27'58.024"N	80°51'08.758"W	71.36	108.584	0.30	0.28	41.84	
2000.00	0.410	336.090	1996.93	-43.83	-22.15	67.38	1682063.87	14331683.50	89°27'58.030"N	80°51'08.761"W	70.92	108.194	0.07	0.07	0.05	
2100.00	0.500	338.260	2096.93	-43.03	-21.41	67.07	1682063.56	14331684.24	89°27'58.037"N	80°51'08.765"W	70.41	107.706	0.09	0.09	2.17	
2200.00	0.780	164.770	2196.93	-43.27	-21.66	67.09	1682063.58	14331683.98	89°27'58.035"N	80°51'08.769"W	70.50	107.897	1.28	0.28	-173.49	
2300.00	0.850	166.180	2296.92	-44.69	-23.04	67.44	1682063.94	14331682.61	89°27'58.021"N	80°51'08.761"W	71.27	108.862	0.07	0.07	1.41	
2400.00	0.830	166.210	2396.91	-46.15	-24.47	67.79	1682064.29	14331681.18	89°27'58.007"N	80°51'08.756"W	72.07	109.943	0.02	-0.02	0.03	
2500.00	0.910	170.160	2496.90	-47.65	-25.95	68.10	1682064.60	14331679.70	89°27'57.992"N	80°51'08.752"W	72.88	110.860	0.10	0.08	3.85	
2600.00	0.890	179.220	2596.88	-49.16	-27.51	68.25	1682064.74	14331678.14	89°27'57.977"N	80°51'08.750"W	73.58	111.954	0.14	-0.02	9.06	
2700.00	0.570	293.480	2696.88	-49.56	-28.09	67.80	1682064.30	14331677.56	89°27'57.971"N	80°51'08.756"W	73.39	112.502	1.24	-0.32	114.27	
2800.00	0.790	313.480	2796.87	-48.60	-27.42	66.85	1682063.34	14331678.24	89°27'57.978"N	80°51'08.768"W	72.25	112.300	0.32	0.22	20.00	

RECEIVED  
Office of Oil and Gas  
MAR 29 2019  
WV Department of  
Environmental Protection



# Actual Wellpath Report

Owens Unit 1H AWP Proj: 14830'

Page n of nn



REFERENCE WELLPATH IDENTIFICATION			
Operator	ANTERO RESOURCES CORPORATION	Slot	Slot #14
Area	Tyler County, WV	Well	Owens Unit 1H
Field	Tyler	Wellbore	Owens Unit 1H AWB
Facility	Weigle East Pad		

WELLPATH DATA (181 stations)																
MD Inclin [ft]	Inclination [°]	Azimuth [°]	TVD [ft]	Vert Sect [ft]	North [ft]	East [ft]	Grid East [US ft]	Grid North [US ft]	Latitude	Longitude	Closure Dist [ft]	Closure Dir [°]	DLS ["/100ft]	Build Rate ["/100ft]	Turn Rate ["/100ft]	Comments
2900.00	0.780	815.07	2896.86	-47.36	-26.46	65.67	1682062.36	14331679.19	39°27'57.987"N	30°51'08.781"W	70.98	111.886	0.02	-0.01	1.58	
3000.00	0.810	815.01	2996.85	-46.11	-25.48	64.89	1682061.38	14331680.17	39°27'57.997"N	30°51'08.793"W	69.71	111.438	0.03	0.03	-0.06	
3100.00	0.820	813.69	3096.84	-44.82	-24.48	63.87	1682060.36	14331681.17	39°27'58.007"N	30°51'08.806"W	68.40	110.974	0.02	0.01	-1.32	
3200.00	0.560	813.34	3196.84	-43.75	-23.65	63.00	1682059.49	14331682.00	39°27'58.017"N	30°51'08.817"W	67.29	110.580	0.26	-0.26	-0.35	
3300.00	2.550	107.41	3296.81	-44.66	-23.98	64.76	1682061.26	14331681.67	39°27'58.012"N	30°51'08.795"W	69.06	110.321	3.06	1.99	154.07	
3400.00	4.030	100.86	3396.64	-47.81	-25.31	70.34	1682066.83	14331690.34	39°27'57.999"N	30°51'08.724"W	74.75	109.793	1.52	1.48	-6.53	
3500.00	5.000	100.97	3496.33	-51.86	-26.81	78.07	1682074.55	14331678.85	39°27'57.984"N	30°51'08.625"W	82.54	108.951	0.97	0.97	-0.03	
3600.00	5.150	96.25	3595.94	-56.08	-28.12	86.81	1682083.29	14331677.53	39°27'57.971"N	30°51'08.514"W	91.25	107.951	0.44	0.15	-4.72	
3700.00	6.130	105.24	3695.45	-61.14	-30.02	96.42	1682092.90	14331675.64	39°27'57.952"N	30°51'08.391"W	100.96	107.292	1.32	0.98	8.95	
3800.00	9.480	111.96	3794.51	-69.72	-34.50	109.21	1682105.69	14331671.15	39°27'57.907"N	30°51'08.228"W	114.53	107.531	3.47	3.35	6.72	
3900.00	13.430	115.20	3892.60	-83.47	-42.53	127.36	1682123.83	14331663.13	39°27'57.828"N	30°51'07.997"W	134.26	106.464	4.00	3.95	3.24	
4000.00	14.260	109.35	3989.60	-99.51	-51.55	149.49	1682145.95	14331654.11	39°27'57.738"N	30°51'07.715"W	158.13	109.027	1.63	0.83	-5.85	
4100.00	12.250	101.96	4086.94	-112.93	-57.83	171.50	1682167.95	14331647.83	39°27'57.676"N	30°51'07.435"W	180.99	108.636	2.63	-2.01	-7.39	
4200.00	16.010	108.65	4183.90	-127.15	-64.44	194.95	1682191.39	14331641.22	39°27'57.610"N	30°51'07.136"W	205.33	108.292	4.09	3.76	6.68	
4300.00	17.800	108.07	4279.58	-145.18	-73.60	222.55	1682218.98	14331632.07	39°27'57.519"N	30°51'06.784"W	234.40	108.299	1.80	1.79	-0.59	
4400.00	16.130	98.20	4375.24	-161.16	-80.32	250.84	1682247.26	14331625.35	39°27'57.452"N	30°51'06.423"W	263.38	107.756	3.32	-1.67	-9.87	
4500.00	17.160	98.10	4471.05	-174.66	-84.39	279.19	1682275.60	14331621.29	39°27'57.411"N	30°51'06.062"W	291.67	106.817	1.03	1.03	-0.09	
4600.00	17.590	108.21	4566.51	-190.95	-91.19	308.16	1682304.55	14331614.49	39°27'57.344"N	30°51'05.693"W	321.37	106.484	3.04	0.43	10.10	
4700.00	15.460	105.92	4662.38	-208.11	-99.57	335.33	1682331.72	14331606.11	39°27'57.261"N	30°51'05.346"W	349.80	106.537	2.23	-2.13	-2.29	
4800.00	13.860	98.61	4759.13	-221.65	-105.02	360.00	1682358.37	14331600.67	39°27'57.206"N	30°51'05.032"W	375.00	106.263	2.44	-1.50	-7.31	
4900.00	16.720	105.75	4855.59	-235.78	-110.72	385.69	1682382.06	14331594.97	39°27'57.149"N	30°51'04.705"W	401.27	106.017	3.42	2.86	7.14	
5000.00	15.050	110.25	4951.53	-253.11	-119.41	412.51	1682408.86	14331586.28	39°27'57.063"N	30°51'04.363"W	429.44	106.144	1.43	-0.67	4.50	
5100.00	15.530	107.01	5047.76	-270.09	-128.11	438.28	1682434.62	14331577.58	39°27'56.977"N	30°51'04.034"W	456.62	106.293	1.02	-0.52	-3.24	
5200.00	16.320	102.99	5143.92	-286.24	-135.71	464.94	1682460.97	14331569.98	39°27'56.901"N	30°51'03.699"W	484.05	106.282	0.93	0.79	-1.79	
5300.00	16.120	102.99	5239.94	-301.89	-142.52	491.72	1682488.04	14331563.18	39°27'56.833"N	30°51'03.353"W	511.96	106.164	0.65	-0.20	-2.23	
5400.00	14.970	106.42	5336.28	-317.10	-149.29	517.64	1682513.95	14331556.41	39°27'56.766"N	30°51'03.023"W	538.74	106.088	1.47	-1.15	3.43	
5454.00	15.190	103.42	5388.42	-325.14	-152.91	531.21	1682527.52	14331552.79	39°27'56.730"N	30°51'02.850"W	552.78	106.058	1.50	0.41	-5.56	
5501.00	16.450	101.42	5433.64	-331.99	-155.65	543.72	1682540.03	14331550.05	39°27'56.703"N	30°51'02.691"W	565.56	105.975	2.92	2.68	-4.26	BH AT Curve <-8-1/2">[5454']{5501'-14806'}
5591.00	16.910	100.00	5519.85	-345.17	-160.45	569.10	1682565.40	14331545.26	39°27'56.655"N	30°51'02.367"W	591.29	105.745	0.68	0.51	-1.58	
5636.00	16.130	99.03	5563.00	-351.47	-162.57	581.72	1682578.01	14331543.14	39°27'56.634"N	30°51'02.206"W	604.01	105.613	1.84	-1.73	-2.18	

RECEIVED  
Office of Oil and Gas  
MAR 29 2019  
WV Department of  
Environmental Protection



# Actual Wellpath Report

Owens Unit 1H AWP Proj: 14830'

Page n of nn



REFERENCE WELLPATH IDENTIFICATION		Slot	Slot #14
Operator	ANTERO RESOURCES CORPORATION	Well	Owens Unit 1H
Area	Tyler County, WV	Wellbore	Owens Unit 1H AWB
Field	Tyler		
Facility	Weigle East Pad		

WELLPATH DATA (181 stations) + = interpolated/extrapolated station																
MD (ft)	Inclination (°)	Azimuth (°)	TVD (ft)	Vert Sect (ft)	North (ft)	East (ft)	Grid East (ft)	Grid North (ft)	Latitude	Longitude	Closure Dist (ft)	Closure Dir (°)	DLS (F/100ft)	Build Rate (F/100ft)	Turn Rate (F/100ft)	Comments
5681.00	14.540	91.520	5608.40	-356.57	-163.70	589.55	1682589.83	14331542.01	39°27'56.622"N	80°51'02.055"W	615.71	105.419	5.65	-3.53	-16.69	
5726.00	12.970	78.250	5650.12	-359.36	-162.82	604.14	1682600.42	14331542.89	39°27'56.631"N	80°51'01.920"W	625.70	105.083	7.81	-3.49	-29.49	
5771.00	11.840	64.560	5694.07	-359.64	-159.81	613.25	1682609.53	14331545.90	39°27'56.661"N	80°51'01.804"W	633.73	104.606	6.98	-2.51	-30.42	
5815.00	11.290	44.220	5737.20	-357.34	-154.78	620.34	1682616.61	14331550.92	39°27'56.710"N	80°51'01.714"W	639.36	104.010	9.30	-1.25	-46.23	
5860.00	12.230	30.560	5781.26	-352.39	-147.52	625.83	1682622.10	14331558.18	39°27'56.782"N	80°51'01.643"W	642.99	103.263	6.51	2.09	-30.36	
5905.00	13.670	23.230	5825.12	-345.48	-138.52	630.36	1682626.62	14331567.17	39°27'56.871"N	80°51'01.588"W	645.40	102.384	4.85	3.20	-16.29	
5950.00	15.270	14.560	5868.70	-336.72	-127.90	633.94	1682630.21	14331570.79	39°27'56.976"N	80°51'01.540"W	646.72	101.407	5.98	3.56	-19.27	
5995.00	17.080	2.360	5911.93	-325.72	-115.56	635.71	1682631.97	14331580.13	39°27'57.088"N	80°51'01.517"W	648.12	100.303	8.53	4.02	-27.11	
6039.00	19.710	0.070	5953.67	-312.77	-101.68	635.98	1682632.25	14331604.00	39°27'57.235"N	80°51'01.513"W	644.06	99.083	6.20	5.98	-5.20	
6088.00	21.994	1.023	5978.90	-303.77	-92.07	636.08	1682632.34	14331613.61	39°27'57.350"N	80°51'01.512"W	642.71	98.236	8.56	8.48	3.53	Sycamore: 6066' MD
6084.00	23.520	1.560	5995.50	-297.28	-85.11	636.23	1682632.50	14331620.56	39°27'57.398"N	80°51'01.509"W	641.90	97.619	8.55	8.48	2.98	
6129.00	27.310	1.030	6036.14	-279.29	-65.80	636.87	1682632.93	14331639.86	39°27'57.589"N	80°51'01.504"W	640.06	95.901	8.44	8.42	-1.18	
6174.00	31.360	358.150	6075.36	-258.51	-43.77	636.47	1682632.74	14331661.89	39°27'57.807"N	80°51'01.506"W	637.98	93.934	9.53	9.00	-6.40	
6219.00	35.660	355.010	6112.88	-234.70	-18.99	634.95	1682631.22	14331686.66	39°27'58.062"N	80°51'01.524"W	635.24	91.713	10.30	9.56	-6.98	
6264.00	40.660	353.000	6148.25	-207.72	8.65	632.02	1682628.29	14331714.29	39°27'58.325"N	80°51'01.561"W	632.08	89.216	11.46	11.11	-4.47	
6308.00	46.020	351.630	6180.24	-178.22	38.56	627.97	1682624.24	14331744.19	39°27'58.621"N	80°51'01.612"W	629.15	86.486	12.37	12.18	-3.08	
6353.00	51.550	350.670	6209.88	-145.02	72.00	622.75	1682619.02	14331777.61	39°27'58.951"N	80°51'01.678"W	626.90	83.405	12.39	12.29	-2.13	
6398.00	56.500	348.950	6236.31	-109.14	107.82	616.29	1682612.57	14331813.42	39°27'59.306"N	80°51'01.760"W	625.65	80.076	11.43	11.00	-3.82	
6416.00	58.732	347.443	6245.95	-94.10	122.70	613.18	1682609.46	14331826.29	39°27'59.453"N	80°51'01.799"W	625.34	78.664	14.27	12.40	-8.37	Burket: 6416' MD
6443.00	62.110	345.310	6259.28	-70.77	145.51	607.65	1682603.92	14331851.09	39°27'59.678"N	80°51'01.869"W	624.83	76.533	14.27	12.51	-7.90	
6471.00	64.567	343.501	6271.84	-45.82	169.61	600.92	1682597.20	14331876.18	39°27'59.917"N	80°51'01.954"W	624.39	74.238	10.50	8.77	-6.46	Tully: 6471' MD
6487.00	65.980	342.500	6278.53	-31.31	183.51	596.67	1682592.95	14331889.07	39°28'00.054"N	80°51'02.008"W	624.25	72.905	10.50	8.83	-6.25	
6532.00	69.800	339.860	6295.47	10.36	222.95	583.21	1682579.50	14331928.50	39°28'00.444"N	80°51'02.179"W	624.37	69.079	10.08	8.49	-5.87	
6577.00	73.010	338.520	6309.82	53.00	262.61	568.05	1682564.35	14331968.35	39°28'00.838"N	80°51'02.371"W	625.90	65.172	7.67	7.13	-2.98	
6590.00	74.189	338.584	6313.49	65.47	274.42	563.49	1682559.79	14331979.95	39°28'00.953"N	80°51'02.429"W	626.76	64.034	9.08	9.07	0.50	Marcellus POE: 6590' MD
6622.00	77.090	338.740	6321.42	96.46	303.29	552.22	1682548.51	14332008.81	39°28'01.239"N	80°51'02.573"W	630.02	61.223	9.08	9.07	0.49	
6667.00	81.720	340.150	6329.70	140.68	344.70	536.69	1682533.00	14332050.20	39°28'01.648"N	80°51'02.770"W	637.85	57.289	10.74	10.29	3.13	
6712.00	85.220	341.630	6334.81	185.37	386.94	522.06	1682518.37	14332092.42	39°28'02.066"N	80°51'02.955"W	649.82	53.455	8.44	7.78	3.29	
6756.00	88.540	341.970	6336.82	229.29	428.68	508.34	1682504.65	14332134.15	39°28'02.479"N	80°51'03.129"W	664.96	49.859	9.85	9.82	0.77	

RECEIVED  
Office of Oil and Gas  
MAR 29 2019  
WV Department of  
Environmental Protection



# Actual Wellpath Report

Owens Unit 1H AWP Proj: 14830'

Page n of nn



## REFERENCE WELLPATH IDENTIFICATION

Operator	ANTERO RESOURCES CORPORATION	Slot	Slot #14
Area	Tyler County, WV	Well	Owens Unit 1H
Field	Taylor	Wellbore	Owens Unit 1H AWB
Facility	Weigle East Pad		

## WELLPATH DATA (181 stations)

MD (ft)	Inclination (°)	Azimuth (°)	TVD (ft)	Vert Sect (ft)	North (ft)	East (ft)	Grid East (ft)	Grid North (ft)	Latitude	Longitude	Closure Dist (ft)	Closure Dir (°)	DLS (ft/100ft)	Build Rate (ft/100ft)	Turn Rate (°/100ft)	Comments
6846.00	90.120	338.060	6337.09	319.28	513.24	477.58	1682473.91	14332218.68	39°28'03.315"N	80°51'03.520"W	701.07	42.939	4.39	0.64	-4.34	
6937.00	90.120	338.820	6336.90	410.24	597.88	444.14	1682440.49	14332303.28	39°28'04.152"N	80°51'03.944"W	744.79	36.607	0.84	0.00	0.84	
7026.00	90.090	337.580	6336.74	499.19	680.51	411.09	1682407.45	14332385.88	39°28'04.969"N	80°51'04.364"W	795.04	31.136	1.39	-0.03	-1.39	
7116.00	90.310	336.550	6336.42	589.07	763.39	376.02	1682372.39	14332468.73	39°28'05.789"N	80°51'04.809"W	850.98	26.223	1.17	0.24	-1.14	
7206.00	89.970	338.530	6336.20	678.98	846.56	341.64	1682338.02	14332551.86	39°28'06.611"N	80°51'05.246"W	912.90	21.977	2.23	-0.38	2.20	
7296.00	90.880	339.440	6335.55	768.96	930.57	309.37	1682305.76	14332635.94	39°28'07.442"N	80°51'05.656"W	980.65	18.389	1.41	0.99	1.01	
7395.00	90.370	337.000	6334.60	857.90	1013.21	276.35	1682272.76	14332718.44	39°28'08.259"N	80°51'06.075"W	1050.22	15.256	2.80	-0.55	-2.74	
7475.00	89.970	337.890	6334.33	947.81	1096.32	241.83	1682238.25	14332801.52	39°28'09.081"N	80°51'06.514"W	1122.68	12.439	1.08	-0.44	0.99	
7564.00	89.690	341.070	6334.59	1036.80	1179.66	210.63	1682207.07	14332884.83	39°28'09.908"N	80°51'06.910"W	1198.32	10.124	3.59	-0.31	3.57	
7654.00	90.480	343.610	6334.45	1126.71	1265.41	183.33	1682179.78	14332970.55	39°28'10.754"N	80°51'07.266"W	1278.63	8.244	2.96	0.85	2.82	
7744.00	90.680	342.100	6333.53	1216.60	1351.41	156.80	1682153.26	14333056.51	39°28'11.604"N	80°51'07.592"W	1360.47	6.618	1.69	0.21	-1.68	
7833.00	90.430	341.280	6332.67	1305.55	1435.90	128.85	1682125.31	14333140.96	39°28'12.439"N	80°51'07.947"W	1441.67	5.128	0.96	-0.28	-0.92	
7923.00	90.220	342.390	6332.16	1395.51	1521.41	100.79	1682097.27	14333226.44	39°28'13.285"N	80°51'08.303"W	1524.74	3.790	1.26	-0.23	1.23	
8012.00	90.180	341.960	6331.85	1484.44	1606.14	73.54	1682070.04	14333311.13	39°28'14.123"N	80°51'08.649"W	1607.82	2.622	0.49	-0.04	-0.48	
8102.00	90.180	342.580	6331.57	1574.37	1691.86	46.14	1682042.64	14333396.82	39°28'14.971"N	80°51'08.996"W	1692.49	1.562	0.69	0.00	0.69	
8192.00	90.430	340.770	6331.09	1664.33	1777.29	17.84	1682014.36	14333482.22	39°28'15.815"N	80°51'09.355"W	1777.38	0.575	2.03	0.28	-2.01	
8281.00	89.420	339.790	6331.20	1753.33	1861.07	-12.19	1681984.34	14333565.97	39°28'16.644"N	80°51'09.737"W	1861.11	359.625	1.58	-1.13	-1.10	
8371.00	90.460	340.060	6331.30	1843.33	1945.60	-43.08	1681953.46	14333650.46	39°28'17.480"N	80°51'10.129"W	1946.08	358.732	1.19	1.16	0.30	
8461.00	90.710	337.720	6330.38	1933.30	2029.55	-75.49	1681921.06	14333734.38	39°28'18.310"N	80°51'10.540"W	2030.95	357.870	2.61	0.28	-2.60	
8550.00	88.850	338.190	6329.94	2022.24	2112.04	-108.89	1681887.67	14333818.84	39°28'19.126"N	80°51'10.965"W	2114.85	357.049	1.10	-0.97	0.53	
8640.00	90.030	339.050	6330.04	2112.21	2195.85	-141.70	1681854.87	14333900.61	39°28'19.955"N	80°51'11.381"W	2200.41	356.308	0.98	0.20	0.96	
8730.00	90.060	343.080	6329.97	2202.18	2280.96	-170.90	1681825.69	14333985.69	39°28'20.798"N	80°51'11.752"W	2287.35	355.715	4.48	0.03	4.48	
8819.00	90.430	340.150	6329.59	2291.13	2365.41	-198.97	1681797.63	14334070.10	39°28'21.631"N	80°51'12.108"W	2373.76	355.192	3.32	0.42	-3.29	
8909.00	90.400	338.550	6328.94	2381.12	2449.62	-230.71	1681765.91	14334154.28	39°28'22.464"N	80°51'12.511"W	2460.46	354.620	1.78	-0.03	-1.78	
8999.00	91.480	333.990	6327.46	2470.89	2531.98	-266.91	1681729.72	14334238.60	39°28'23.279"N	80°51'12.971"W	2546.01	353.982	5.21	1.20	-5.07	
9088.00	89.750	335.870	6326.50	2559.52	2612.58	-304.62	1681692.03	14334317.18	39°28'24.076"N	80°51'13.450"W	2630.28	353.350	2.87	-1.94	2.11	
9178.00	90.400	338.320	6326.38	2649.40	2695.48	-339.64	1681657.01	14334400.04	39°28'24.896"N	80°51'13.895"W	2716.79	352.818	2.82	0.72	2.72	
9267.00	91.200	334.750	6325.14	2738.21	2777.10	-375.07	1681621.60	14334481.62	39°28'25.703"N	80°51'14.345"W	2802.31	352.308	4.11	0.90	-4.01	
9357.00	89.780	335.910	6324.37	2827.90	2858.87	-412.63	1681584.05	14334563.37	39°28'26.512"N	80°51'14.822"W	2888.50	351.787	2.04	-1.58	1.29	
9447.00	90.340	342.530	6324.28	2917.84	2942.97	-444.54	1681562.15	14334647.44	39°28'27.344"N	80°51'15.228"W	2976.36	351.410	7.38	0.62	7.38	

RECEIVED  
Office of Oil and Gas  
MAR 29 2019  
WV Department of  
Environmental Protection



# Actual Wellpath Report

Owens Unit 1H AWP Proj: 14830'

Page n of nn



## REFERENCE WELLPATH IDENTIFICATION

Operator	ANTERO RESOURCES CORPORATION	Slot	Slot #14
Area	Tyler County, WV	Well	Owens Unit 1H
Field	Tyler	Wellbore	Owens Unit 1H AWB
Facility	Weigle East Pad		

## WELLPATH DATA (181 stations)

MD (ft)	Inclination (°)	Azimuth (°)	TVD (ft)	Vert Sect (ft)	North (ft)	East (ft)	Grid East (US ft)	Grid North (US ft)	Latitude	Longitude	Closure Dist (ft)	Closure Dir (°)	DLS (F/100ft)	Build Rate (F/100ft)	Turn Rate (F/100ft)	Comments
9537.00	90.820	345.290	6323.52	3007.62	3029.44	-469.48	1681527.22	14334733.86	39°28'28.199"N	80°51'15.544"W	3065.60	351.191	3.08	0.31	3.07	
9626.00	91.970	344.880	6321.51	3096.25	3115.41	-492.39	1681504.33	14334819.81	39°28'29.049"N	80°51'15.834"W	3154.08	351.019	1.59	1.52	-0.46	
9716.00	91.940	339.220	6318.44	3186.11	3200.95	-520.09	1681476.63	14334905.31	39°28'29.895"N	80°51'16.186"W	3242.93	350.771	6.29	-0.03	-6.23	
9806.00	89.690	338.190	6317.16	3276.07	3284.79	-552.77	1681443.97	14334989.11	39°28'30.724"N	80°51'16.601"W	3330.97	350.448	2.75	-2.50	-1.14	
9895.00	89.110	341.460	6318.08	3365.05	3368.32	-583.45	1681413.30	14335072.61	39°28'31.560"N	80°51'16.990"W	3418.47	350.173	3.75	-0.65	3.70	
9985.00	90.770	342.290	6318.19	3455.00	3453.85	-611.43	1681385.33	14335158.11	39°28'32.396"N	80°51'17.345"W	3507.55	349.961	2.05	1.84	0.90	
10075.00	90.550	343.840	6317.15	3544.86	3539.94	-637.64	1681359.13	14335244.16	39°28'33.247"N	80°51'17.678"W	3596.91	349.789	1.74	-0.24	1.72	
10165.00	92.030	342.590	6315.12	3634.70	3626.08	-663.63	1681333.16	14335330.27	39°28'34.099"N	80°51'18.007"W	3686.31	349.629	2.15	1.64	-1.36	
10254.00	90.460	336.480	6313.19	3723.63	3709.40	-694.72	1681302.08	14335413.56	39°28'34.923"N	80°51'18.402"W	3773.90	349.392	7.09	-1.76	-6.87	
10344.00	89.660	335.110	6313.09	3813.38	3791.49	-731.62	1681285.19	14335495.61	39°28'35.794"N	80°51'18.871"W	3861.43	349.078	1.76	-0.89	-1.52	
10434.00	90.150	338.460	6313.24	3903.22	3874.19	-767.09	1681226.73	14335578.28	39°28'36.552"N	80°51'19.322"W	3949.40	348.800	3.76	0.54	3.72	
10524.00	89.880	341.080	6313.22	3993.21	3958.63	-798.21	1681198.63	14335662.68	39°28'37.387"N	80°51'19.717"W	4038.30	348.600	2.93	-0.30	2.91	
10613.00	89.910	342.570	6313.38	4082.17	4043.18	-825.97	1681170.88	14335747.21	39°28'38.224"N	80°51'20.069"W	4126.69	348.454	1.67	0.03	1.67	
10703.00	89.290	344.160	6314.01	4172.01	4129.41	-851.73	1681145.13	14335833.40	39°28'39.076"N	80°51'20.396"W	4216.34	348.346	1.90	-0.69	1.77	
10792.00	89.480	342.510	6314.97	4260.85	4214.67	-877.25	1681119.82	14335918.62	39°28'39.919"N	80°51'20.719"W	4305.00	348.242	1.87	0.21	-1.85	
10882.00	89.140	340.980	6316.05	4350.80	4300.13	-905.44	1681091.44	14336004.05	39°28'40.764"N	80°51'21.077"W	4394.42	348.109	1.74	-0.38	-1.70	
10972.00	90.000	341.350	6316.72	4440.78	4385.30	-934.50	1681062.39	14336089.19	39°28'41.607"N	80°51'21.446"W	4483.77	347.970	1.04	0.96	0.41	
11062.00	89.290	340.720	6317.28	4530.76	4470.42	-963.75	1681033.16	14336174.27	39°28'42.448"N	80°51'21.817"W	4573.12	347.834	1.05	-0.79	-0.70	
11152.00	88.680	339.740	6318.88	4620.75	4555.10	-994.18	1681002.73	14336258.92	39°28'43.286"N	80°51'22.204"W	4662.33	347.688	1.28	-0.68	-1.06	
11241.00	89.200	343.450	6320.52	4708.68	4639.52	-1022.27	1680974.66	14336343.30	39°28'44.120"N	80°51'22.580"W	4750.80	347.574	4.21	0.58	4.17	
11331.00	90.150	343.270	6321.03	4799.53	4725.74	-1048.05	1680948.89	14336429.49	39°28'44.973"N	80°51'22.887"W	4840.56	347.496	1.07	1.06	-0.20	
11421.00	90.250	338.400	6320.72	4889.49	4810.73	-1077.58	1680919.37	14336514.45	39°28'45.814"N	80°51'23.262"W	4929.94	347.374	5.41	0.11	-5.41	
11510.00	89.820	338.150	6320.67	4978.38	4892.82	-1111.96	1680895.00	14336596.50	39°28'46.625"N	80°51'23.699"W	5017.58	347.196	2.57	-0.48	-2.53	
11600.00	89.260	340.430	6321.39	5068.32	4976.41	-1145.24	1680865.73	14336680.06	39°28'47.452"N	80°51'24.122"W	5106.49	347.040	4.80	-0.62	4.76	
11690.00	91.350	344.360	6320.91	5158.22	5062.17	-1172.46	1680824.53	14336765.79	39°28'48.300"N	80°51'24.467"W	5196.17	346.960	4.95	2.32	4.37	
11779.00	90.150	340.340	6319.74	5247.12	5146.95	-1199.44	1680797.56	14336850.54	39°28'49.138"N	80°51'24.809"W	5284.86	346.882	4.71	-1.35	-4.52	
11869.00	89.600	337.670	6319.94	5337.09	5230.94	-1231.75	1680765.26	14336934.49	39°28'49.969"N	80°51'25.220"W	5374.01	346.750	3.14	-0.61	-3.06	
11959.00	90.400	339.190	6319.94	5427.05	5314.61	-1264.91	1680732.12	14337018.12	39°28'50.796"N	80°51'25.641"W	5463.06	346.612	2.01	0.89	1.80	
12048.00	91.140	336.370	6318.74	5515.96	5396.98	-1298.56	1680698.48	14337100.46	39°28'51.611"N	80°51'26.068"W	5551.01	346.471	3.28	0.83	-3.17	
12138.00	90.120	331.540	6317.75	5605.43	5477.81	-1338.06	1680668.99	14337181.26	39°28'52.411"N	80°51'26.571"W	5638.87	346.273	5.48	-1.13	-5.37	



# Actual Wellpath Report

Owens Unit 1H AWP Proj: 14830'

Page n of nn



REFERENCE WELLPATH IDENTIFICATION		Slot	Slot #14
Operator	ANTERO RESOURCES CORPORATION	Well	Owens Unit 1H
Area	Tyler County, WV	Wellbore	Owens Unit 1H AWB
Field	Tyler		
Facility	Weigle East Pad		

## WELLPATH DATA (181 stations)

MD (ft)	Inclination (°)	Azimuth (°)	TVD (ft)	Vert Sect (ft)	North (ft)	East (ft)	Grid East (US ft)	Grid North (US ft)	Latitude	Longitude	Closure Dist (ft)	Closure Dir (°)	DLS (°/100ft)	Build Rate (°/100ft)	Turn Rate (°/100ft)	Comments
12228.00	89.970	334.740	6317.68	5694.76	5558.09	-1378.72	1680618.35	14337261.51	39°28'53.205"N	80°51'27.087"W	5726.54	346.069	3.56	-0.17	3.56	
12318.00	89.850	337.850	6317.82	5784.56	5640.49	-1414.90	1680582.19	14337343.87	39°28'54.020"N	80°51'27.547"W	5815.24	345.918	3.46	-0.13	3.46	
12407.00	89.200	338.680	6318.56	5873.52	5723.16	-1447.85	1680549.24	14337426.51	39°28'54.837"N	80°51'27.966"W	5903.46	345.803	1.18	-0.73	0.93	
12497.00	89.050	341.810	6319.94	5963.49	5807.84	-1478.27	1680518.84	14337511.16	39°28'55.675"N	80°51'28.352"W	5993.02	345.720	3.48	-0.17	3.48	
12587.00	91.510	346.220	6319.50	6053.25	5894.33	-1503.04	1680494.08	14337597.61	39°28'56.530"N	80°51'28.666"W	6083.95	345.695	5.61	-2.73	4.90	
12676.00	90.620	342.870	6317.84	6141.94	5980.08	-1526.75	1680470.38	14337683.33	39°28'57.378"N	80°51'28.967"W	6171.90	345.678	3.89	-1.00	-3.76	
12766.00	89.670	343.310	6317.69	6231.81	6056.19	-1552.93	1680444.21	14337769.41	39°28'58.229"N	80°51'29.299"W	6261.81	345.641	1.26	-1.17	0.48	
12856.00	90.860	342.900	6317.36	6321.68	6152.30	-1579.09	1680418.07	14337855.48	39°28'59.081"N	80°51'29.631"W	6351.72	345.605	1.50	1.43	-0.46	
12945.00	90.490	339.830	6316.31	6410.64	6236.62	-1607.52	1680389.64	14337939.77	39°28'59.914"N	80°51'29.992"W	6440.46	345.546	3.47	-0.42	-3.45	
13035.00	89.970	340.460	6315.95	6500.84	6321.27	-1638.08	1680359.08	14338024.38	39°29'00.752"N	80°51'30.380"W	6530.07	345.472	0.91	-0.58	0.70	
13125.00	90.710	342.330	6315.41	6590.60	6405.56	-1666.80	1680330.39	14338109.64	39°29'01.595"N	80°51'30.744"W	6619.84	345.417	2.23	0.82	2.08	
13215.00	91.720	339.130	6313.50	6680.56	6491.49	-1696.49	1680300.71	14338194.53	39°29'02.435"N	80°51'31.121"W	6709.51	345.354	3.73	1.12	-3.56	
13304.00	89.380	336.770	6312.65	6769.49	6573.96	-1729.90	1680267.32	14338276.97	39°29'03.250"N	80°51'31.546"W	6797.76	345.257	3.73	-2.63	-2.65	
13394.00	89.660	342.360	6313.40	6859.45	6658.26	-1761.30	1680235.92	14338361.24	39°29'04.084"N	80°51'31.945"W	6887.28	345.183	6.22	0.31	6.21	
13484.00	90.580	342.760	6313.21	6949.36	6744.12	-1788.28	1680206.96	14338447.07	39°29'04.933"N	80°51'32.287"W	6977.18	345.149	1.11	1.02	0.44	
13574.00	91.290	342.300	6311.75	7039.26	6829.96	-1815.29	1680181.95	14338532.87	39°29'05.782"N	80°51'32.630"W	7067.08	345.116	0.94	0.79	-0.51	
13663.00	91.110	338.440	6309.88	7128.22	6913.75	-1845.18	1680152.08	14338616.63	39°29'06.610"N	80°51'33.009"W	7155.74	345.057	4.34	-0.20	-4.34	
13753.00	91.050	335.770	6308.18	7218.08	6996.64	-1880.18	1680119.09	14338699.48	39°29'07.430"N	80°51'33.454"W	7244.87	344.958	2.97	-0.07	-2.97	
13843.00	90.830	334.350	6306.71	7307.73	7078.24	-1918.13	1680079.16	14338781.04	39°29'08.237"N	80°51'33.936"W	7333.53	344.838	1.60	-0.24	-1.58	
13932.00	90.770	336.870	6305.46	7396.45	7159.28	-1954.87	1680042.43	14338862.05	39°29'09.039"N	80°51'34.403"W	7421.37	344.727	2.83	-0.07	2.83	
14022.00	90.800	338.090	6304.23	7486.35	7242.41	-1989.34	1680007.98	14338945.15	39°29'09.861"N	80°51'34.841"W	7510.65	344.641	1.36	0.03	1.36	
14112.00	90.860	339.350	6302.93	7576.31	7326.26	-2022.00	1679975.33	14339028.97	39°29'10.690"N	80°51'35.256"W	7600.17	344.571	1.40	0.07	1.40	
14202.00	90.430	340.760	6301.91	7666.30	7410.85	-2052.70	1679944.64	14339113.53	39°29'11.527"N	80°51'35.646"W	7689.88	344.518	1.64	-0.48	1.57	
14291.00	90.430	338.220	6301.25	7755.29	7494.20	-2083.88	1679913.48	14339196.85	39°29'12.351"N	80°51'36.042"W	7778.54	344.461	2.85	0.00	-2.85	
14381.00	90.400	338.920	6300.59	7845.26	7577.98	-2116.76	1679880.61	14339280.59	39°29'13.179"N	80°51'36.460"W	7868.06	344.393	0.78	-0.03	0.78	
14470.00	90.370	341.560	6300.00	7934.25	7661.73	-2146.84	1679850.53	14339364.30	39°29'14.008"N	80°51'36.842"W	7958.82	344.347	2.97	-0.03	2.97	
14560.00	90.430	342.410	6299.37	8024.19	7747.31	-2174.68	1679822.21	14339449.85	39°29'14.854"N	80°51'37.195"W	8046.74	344.321	0.95	0.07	0.94	
14650.00	90.370	340.130	6298.74	8114.16	7832.54	-2203.57	1679793.83	14339535.05	39°29'15.697"N	80°51'37.562"W	8136.61	344.287	2.53	-0.07	-2.53	
14739.00	90.450	338.220	6298.07	8203.15	7915.72	-2235.21	1679762.20	14339618.19	39°29'16.519"N	80°51'37.964"W	8225.25	344.232	2.15	0.13	-2.15	
14806.00	90.370	338.390	6297.57	8270.11	7977.97	-2259.98	1679737.44	14339680.42	39°29'17.335"N	80°51'38.279"W	8291.90	344.184	0.31	-0.18	0.23	





# Actual Wellpath Report

Owens Unit 1H AWP Proj: 14830'

Page n of nn



REFERENCE WELLPATH IDENTIFICATION	
Operator	ANTERO RESOURCES CORPORATION
Area	Tyler County, WV
Field	Tyler
Facility	Weigle East Pad
Slot	Slot #14
Well	Owens Unit 1H
Wellbore	Owens Unit 1H AWB

WELLPATH DATA (181 stations)															
MD (ft)	Inclination (°)	Azimuth (°)	TVD (ft)	Vert Sect (ft)	North (ft)	East (ft)	Grid East (US ft)	Grid North (US ft)	Latitude	Longitude	Closure Dist (ft)	DLS (1/100ft)	Build Rate (1/100ft)	Turn Rate (1/100ft)	Comments
14830.00	90.37	338.39	6297.41	8294.10	8000.28	-2268.82	1679728.61	14339702.72	39°29'17.356"N	80°51'38.391"W	8315.77	0.00	0.00	0.00	Projected MD at ID: 14830'

TARGETS								
Name	TVD (ft)	North (ft)	East (ft)	Grid East (US ft)	Grid North (US ft)	Latitude	Longitude	Shape
Owens Unit 1H POE Rev-2	6303.00	250.22	562.87	1682559.16	14331955.76	39°28'00.714"N	80°51'02.438"W	point
Owens Unit 1H POE Rev-3	6311.00	254.93	561.16	1682557.45	14331960.47	39°28'00.760"N	80°51'02.460"W	point
Owens Unit 1H BHL - Plat	6330.00	7974.46	-2243.61	1679753.81	14339676.91	39°29'17.100"N	80°51'38.070"W	point
Owens Unit 1H BHL Rev-3	6337.00	8028.04	-2263.08	1679734.35	14339730.46	39°29'17.630"N	80°51'38.317"W	point
Owens Unit 1H LP Rev-3	6337.00	400.99	508.09	1682504.40	14332106.47	39°28'02.205"N	80°51'03.133"W	point

WELLPATH COMPOSITION - Ref Wellbore: Owens Unit 1H AWB			Ref Wellpath: Owens Unit 1H AWP Proj: 14830'		
Start MD (ft)	End MD (ft)	Positional Uncertainty Model	Log Name/Comment	Wellbore	
19.00	5454.00	Gyrodata standard - Drop gyro or Multi-shot	04_Gyrodata MS Gyro <8-3/4'> (100 - 5454)	Owens Unit 1H AWB	
5454.00	14806.00	BHL AutoTrak Curve (Short)	05_BHL AT Curve <8-1/2'> (5454)-(5501-14806)	Owens Unit 1H AWB	
14806.00	14830.00	Blind Drilling (std)	Projection to bit	Owens Unit 1H AWB	



# Actual Wellpath Report

Owens Unit 1H AWP Proj: 14830'

Page n of nn

## REFERENCE WELLPATH IDENTIFICATION

Operator	ANTERO RESOURCES CORPORATION	Slot	Slot #14
Area	Tyler County, WV	Well	Owens Unit 1H
Field	Tyler	Wellbore	Owens Unit 1H AWB
Facility	Weigle East Pad		

## WELLPATH COMMENTS

MD [ft]	Inclination [°]	Azimuth [°]	TVD [ft]	Comment
100.00	0.130	159.490	100.00	Gyrodatta MS Gyro <8-3/4">(100'-5454')
5501.00	16.450	101.420	5433.64	BHI AT Curve <8-1/2">(5454')(5501'-14806')
6066.00	21.994	1.023	5978.90	Sycamore: 6066' MD
6268.00	41.147	352.864	6151.27	Middlesex: 6268' MD
6416.00	58.732	347.443	6245.95	Burkett: 6416' MD
6471.00	64.567	343.501	6271.84	Tully: 6471' MD
6590.00	74.189	338.584	6313.49	Marcellus POE: 6590' MD
14830.00	90.370	338.390	6297.41	Projected MD at TD: 14830'

## COMMENTS

Wellpath general comments  
 API: 47-095-02366-00-00  
 BHI Job #: 8164458  
 Rig: Precision 525  
 Duration: 10.10.2016 - 10.12.2016  
 Gyrodatta MS Gyro <8-3/4">(100'-5454')  
 BHI AT Curve <8-1/2">(5454')(5501'-14806')  
 Sycamore: 6066' MD  
 Middlesex: 6268' MD  
 Burkett: 6416' MD  
 Tully: 6471' MD  
 Marcellus POE: 6590' MD  
 Projected MD at TD: 14830'