



ANTERO RESOURCES CORPORATION

Location: Tyler County, WV
 Facility: Tyler
 Slot: Slot #01
 Well: Mysis Unit 1H
 Wellbore: Mysis Unit 1H PWB



Plus reference wellbore is Mysis Unit 1H PWB Rev-A-0

Grid System: NAD27 / UTM Zone 17 North, US feet.

True vertical depths are referenced to Frontier 22 (RKB)

Norm Reference: Grid north

Scale: True distance

Measured depths are referenced to Frontier 22 (RKB)

Frontier 22 (RKB) to Mean Sea Level: 1169.5 feet

Mean Sea Level to Mud line (At Slot: Slot #01) - 1145 feet

Coordinates are in feet referenced to Slot

Created by: delbert on 2017-11-01

Database: WA_MPL_EsternUS_Dein

Location Information

Facility Name	Grid East (US ft)	Grid North (US ft)	Latitude	Longitude
Vera Pad	1087510.600	14316796.487	39°25'31.080"N	80°54'14.600"W
Slot #01	56.64	-18.89	39°25'31.620"N	80°54'14.840"W

Comment: Mysis Unit 1H

Frontier 22 (RKB) to Mud line (At Slot: Slot #01): 24.5ft

Mean Sea Level to Mud line (At Slot: Slot #01): -1145ft

Frontier 22 (RKB) to Mean Sea Level: 1169.5ft

Well Data

Slot	Well	Wellbore	Wellpath
Slot #01	Mysis Unit 1H	Mysis Unit 1H AWP	Mysis Unit 1H AWP Proj. 1415P
Slot #01	Mysis Unit 1H	Mysis Unit 1H PWB	Mysis Unit 1H PWB Rev-A-0

Gyrodata MS Gyro <17-1/2"> (100-712) : 0.11" Inc, 109.50ft MD, 109.50ft TVD, -0.08ft VS

Gyrodata MS Gyro <12-1/4"> (712)(738'-829') : 0.17" Inc, 747.50ft MD, 747.50ft TVD, -1.82ft VS

WFT EM <12-1/4"> (829)(949'-2482') : 2.49" Inc, 958.50ft MD, 958.46ft TVD, -2.25ft VS

WFT EM <8-3/4"> (2482)(2594'-6598') : 14.05" Inc, 2603.50ft MD, 2565.22ft TVD, -32.29ft VS

API: 47-095-02394-0000
 BHI Job #: 8800847
 Rig: Frontier 22
 Duration: 10/04/2017-10/05/2017

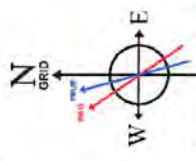
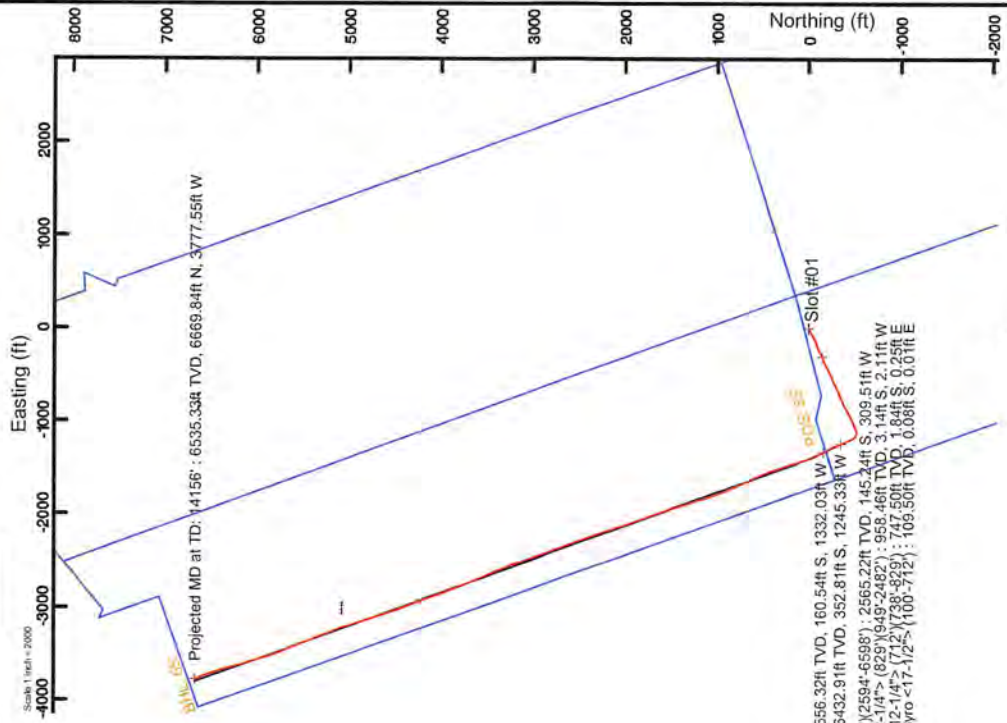
Well Profile Data

Design Comment	MD (ft)	Inc (")	Az (°)	TVD (ft)	Local N (ft)	Local E (ft)	DLS (1/100ft)	VS (ft)
On	6607.90	41.220	307.330	6409.59	-376.06	-1735.70	7.80	62.48
Proj. To Bottom	6877.50	-46.820	337.330	6455.66	-331.69	-1754.44	9.00	111.04
End of 3D Arc	6914.52	77.252	331.739	6565.77	-145.63	-1344.87	13.00	316.63
Landing Pl.	7105.78	90.000	340.279	6587.00	27.57	-1421.55	8.00	505.62
BHL	14158.08	90.000	340.279	6587.00	6666.24	-31801.24	0.00	7557.92

BHI AT Curve <8-1/2"> (6607.5)(6645'-14132') : 45.04" Inc, 6645.00ft MD, 6432.91ft TVD, 88.09ft VS

Marcellus POE: 6892' MD : 72.98" Inc, 6892.00ft MD, 6556.32ft TVD, 288.34ft VS

Projected MD at TD: 14156' : 90.82" Inc, 14156.00ft MD, 6535.33ft TVD, 7553.31ft VS



User specified Dip: 66.68° Field: 51989 nT

Magnetic North is 66.68 degrees West of True North (at 03/Oct/2017)

Grid North is 0.01 degrees East of True North

To correct azimuth from True Grid subtract 0.05 degrees

To correct azimuth from Magnetic ID Grid subtract 7.68 degrees





Actual Wellpath Report

Mysis Unit 1H AWP Proj: 14156'
Page 1 of 9



REFERENCE WELLPATH IDENTIFICATION			
Operator	ANTERO RESOURCES CORPORATION	Slot	Slot #01
Area	Tyler County, WV	Well	Mysis Unit 1H
Field	Tyler	Wellbore	Mysis Unit 1H AWB
Facility	Vera Pad		

REPORT SETUP INFORMATION	
Projection System	NAD27 / UTM Zone 17 North, US feet
North Reference	Grid
Scale	0.999601
Convergence at slot	0.06° East
Software System	WellArchitect® 5.1
User	Delaset
Report Generated	01/Nov/2017 at 17:05
Database/Source file	WA_MPL_EasternUS_Defn\Mysis_Unit_1H_AWP_Proj_14156_.xml

WELLPATH LOCATION						
	Local coordinates		Grid coordinates		Geographic coordinates	
	North[ft]	East[ft]	Easting[US ft]	Northing[US ft]	Latitude	Longitude
Slot Location	56.64	-18.89	1667491.71	14316856.10	39°25'31.620"N	80°54'14.840"W
Facility Reference Pt			1667510.60	14316799.49	39°25'31.060"N	80°54'14.600"W
Field Reference Pt			0.00	0.00	0°00'00.000"	85°29'19.301"W

WELLPATH DATUM		
Calculation method	Minimum curvature	
Horizontal Reference Pt	Slot	
Vertical Reference Pt	Frontier 22 (RKB)	
MD Reference Pt	Frontier 22 (RKB)	
Field Vertical Reference	Mean Sea Level	
	Frontier 22 (RKB) to Facility Vertical Datum	24.50ft
	Frontier 22 (RKB) to Mean Sea Level	1169.50ft
	Frontier 22 (RKB) to Mud Line at Slot (Slot #01)	24.50ft
	Section Origin	N 0.00, E 0.00 ft
	Section Azimuth	340.28°

RECEIVED
Office of Oil and Gas
FEB 20 2019
WV Department of
Environmental Protection

04/05/2019



Actual Wellpath Report

Mysis Unit 1H AWP Proj: 14156'

Page 2 of 9



REFERENCE WELLPATH IDENTIFICATION		Slot	Slot #01
Operator	ANTERO RESOURCES CORPORATION	Well	Mysis Unit 1H
Area	Tyler County, WV	Wellbore	Mysis Unit 1H AWB
Field	Tyler		
Facility	Vera Pad		

WELLPATH DATA (174 stations) † = interpolated/extrapolated station																
MD (ft)	Inclination (°)	Azimuth (°)	TVD (ft)	Vert Sect (ft)	North (ft)	East (ft)	Grid East (US ft)	Grid North (US ft)	Latitude	Longitude	Closure Dist (ft)	Closure Dir (°)	DLS (F/100ft)	Build Rate (F/100ft)	Turn Rate (F/100ft)	Comments
0.00	0.00	176.100	0.00	0.00	0.00	0.00	1667491.71	14316856.10	39°25'31.620"N	80°54'14.840"W	0.00	0.00	0.00	0.00	0.00	
24.50	0.00	176.100	24.50	0.00	0.00	0.00	1667491.71	14316856.10	39°25'31.620"N	80°54'14.840"W	0.00	0.00	0.00	0.00	0.00	
109.50	0.11	176.100	109.50	-0.08	-0.08	0.01	1667491.72	14316856.02	39°25'31.619"N	80°54'14.840"W	0.08	176.100	0.13	0.13	207.18	Gyrodatta MS Gyro <17-1/2"> (100'-712')
209.50	0.26	180.000	209.50	-0.38	-0.40	0.01	1667491.73	14316855.70	39°25'31.616"N	80°54'14.840"W	0.40	178.288	0.15	0.15	3.90	
309.50	0.09	132.700	309.50	-0.67	-0.68	0.07	1667491.78	14316855.42	39°25'31.613"N	80°54'14.839"W	0.69	174.175	0.21	-0.17	-47.30	
409.50	0.20	211.550	409.50	-0.85	-0.89	0.04	1667491.75	14316855.22	39°25'31.611"N	80°54'14.840"W	0.89	177.661	0.20	0.11	78.85	
509.50	0.06	180.690	509.50	-1.00	-1.09	-0.06	1667491.66	14316855.02	39°25'31.609"N	80°54'14.841"W	1.09	182.936	0.15	-0.14	-30.86	
609.50	0.22	153.330	609.50	-1.24	-1.31	0.03	1667491.74	14316854.79	39°25'31.607"N	80°54'14.840"W	1.31	178.699	0.17	0.16	-27.36	
709.50	0.28	167.200	709.50	-1.68	-1.72	0.17	1667491.88	14316854.38	39°25'31.603"N	80°54'14.838"W	1.73	174.356	0.08	0.06	13.87	
721.50	0.25	154.240	721.50	-1.73	-1.77	0.19	1667491.90	14316854.33	39°25'31.602"N	80°54'14.838"W	1.78	173.949	0.56	-0.25	-108.00	
747.50	0.17	119.990	747.50	-1.82	-1.84	0.25	1667491.96	14316854.26	39°25'31.602"N	80°54'14.837"W	1.86	172.399	0.56	-0.31	-131.73	Gyrodatta MS Gyro <12-1/4"> (712')(738'-829')
838.50	0.17	186.150	838.50	-2.04	-2.05	0.35	1667492.06	14316854.06	39°25'31.600"N	80°54'14.836"W	2.07	170.330	0.20	0.00	72.70	
958.50	2.49	249.340	958.46	-2.25	-3.14	-2.11	1667489.60	14316852.96	39°25'31.589"N	80°54'14.867"W	3.78	213.882	2.02	1.93	52.66	WFT EM <12-1/4"> (829')(949'-2482')
1052.50	4.61	245.890	1052.27	-2.57	-5.41	-7.47	1667484.25	14316850.70	39°25'31.567"N	80°54'14.935"W	9.22	234.104	2.27	2.26	-3.67	
1147.50	6.93	243.750	1146.81	-3.48	-9.39	-15.87	1667475.85	14316846.72	39°25'31.527"N	80°54'15.042"W	18.44	239.389	2.14	2.13	-2.25	
1241.50	8.15	243.820	1240.03	-4.85	-14.73	-26.72	1667465.00	14316841.38	39°25'31.475"N	80°54'15.181"W	30.51	241.131	1.62	1.62	0.07	
1336.50	9.46	242.130	1333.91	-6.72	-21.35	-39.67	1667452.06	14316834.76	39°25'31.409"N	80°54'15.346"W	45.05	241.706	1.41	1.38	-1.78	
1430.50	11.30	243.530	1426.36	-8.89	-29.07	-54.74	1667437.00	14316827.05	39°25'31.333"N	80°54'15.538"W	61.98	242.030	1.98	1.96	1.49	
1525.50	13.51	245.640	1519.14	-10.89	-37.80	-73.18	1667418.56	14316818.32	39°25'31.247"N	80°54'15.773"W	82.37	242.866	2.37	2.33	2.22	
1619.50	14.99	245.570	1610.33	-12.75	-47.22	-93.96	1667397.79	14316808.90	39°25'31.154"N	80°54'16.038"W	105.16	243.318	1.15	1.15	-0.07	
1714.50	15.25	243.740	1702.12	-15.15	-57.70	-116.06	1667375.70	14316798.43	39°25'31.051"N	80°54'16.320"W	129.61	243.567	0.85	0.69	-1.93	
1808.50	13.32	243.120	1793.21	-17.91	-68.06	-136.81	1667354.96	14316788.07	39°25'30.949"N	80°54'16.584"W	152.81	243.549	2.06	-2.05	-0.66	
1902.50	12.17	247.760	1884.90	-19.69	-76.71	-155.64	1667336.13	14316779.42	39°25'30.863"N	80°54'16.824"W	173.52	243.763	1.64	-1.22	4.94	
1997.50	12.63	250.990	1977.68	-20.01	-83.88	-174.73	1667317.05	14316772.25	39°25'30.793"N	80°54'17.068"W	193.82	244.355	0.88	0.48	3.40	
2092.50	13.77	248.540	2070.17	-20.22	-91.40	-195.07	1667296.72	14316764.74	39°25'30.719"N	80°54'17.327"W	215.43	244.894	1.34	1.20	-2.58	
2187.50	14.61	248.060	2162.27	-21.03	-100.02	-216.71	1667275.09	14316756.13	39°25'30.634"N	80°54'17.603"W	238.68	245.225	0.89	0.88	-0.51	
2280.50	15.24	246.970	2232.13	-22.19	-109.18	-238.84	1667252.97	14316746.97	39°25'30.543"N	80°54'17.885"W	262.61	245.433	0.74	0.68	-1.17	
2375.50	14.52	244.170	2343.95	-24.18	-119.26	-281.05	1667230.77	14316736.90	39°25'30.444"N	80°54'18.168"W	287.00	245.448	1.07	-0.78	-2.95	
2491.50	13.63	241.010	2456.47	-27.93	-132.22	-286.09	1667205.73	14316723.94	39°25'30.316"N	80°54'18.488"W	315.17	245.196	1.01	-0.77	-2.72	
2603.50	14.05	240.820	2585.22	-32.29	-145.24	-309.51	1667182.33	14316710.92	39°25'30.188"N	80°54'18.786"W	341.89	244.861	0.38	0.38	-0.17	WFT EM <8-3/4"> (2482')(2594'-8598')

04/05/2019

RECEIVED Office of Oil and Gas

FEB 20 2019

WV Department of Environmental Protection



Actual Wellpath Report

Mysis Unit 1H AWP Proj: 14156'
Page 3 of 9



REFERENCE WELLPATH IDENTIFICATION		Slot	Slot #01
Operator	ANTERO RESOURCES CORPORATION	Well	Mysis Unit 1H
Area	Tyler County, WV	Wellbore	Mysis Unit 1H AWB
Field	Tyler		
Facility	Vera Pad		

WELLPATH DATA (174 stations)																
MD (ft)	Inclination (°)	Azimuth (°)	TVD (ft)	Vert Sect (ft)	North (ft)	East (ft)	Grid East (ft)	Grid North (ft)	Latitude	Longitude	Closure Dist (ft)	Closure Dir (°)	DLS (F/100ft)	Build Rate (F/100ft)	Turn Rate (F/100ft)	Comments
2698.50	13.480	248.150	2657.49	-34.59	-154.98	-329.85	1667161.99	14316701.18	39°25'30.082"N	80°54'19.045"W	364.45	244.833	1.93	-0.60	7.72	
2792.50	14.860	248.050	2748.63	-35.47	-163.57	-351.20	1667140.65	14316692.60	39°25'30.007"N	80°54'19.318"W	387.42	245.027	1.47	1.47	-0.10	
2887.50	14.480	245.690	2840.54	-36.99	-173.01	-373.33	1667118.54	14316683.17	39°25'29.914"N	80°54'19.600"W	411.47	245.136	0.75	-0.40	-2.49	
2983.50	15.140	245.170	2933.35	-38.97	-183.21	-395.64	1667096.23	14316672.97	39°25'29.813"N	80°54'19.884"W	436.00	245.152	0.70	0.69	-0.54	
3077.50	14.730	243.500	3024.17	-41.47	-193.70	-417.48	1667074.40	14316662.48	39°25'29.710"N	80°54'20.163"W	460.23	245.110	0.63	-0.44	-1.78	
3172.50	14.430	241.740	3116.11	-44.66	-204.69	-438.71	1667053.18	14316651.49	39°25'29.601"N	80°54'20.433"W	484.12	244.987	0.56	-0.32	-1.85	
3265.50	15.120	244.390	3206.04	-47.62	-215.42	-459.86	1667032.04	14316640.77	39°25'29.496"N	80°54'20.703"W	507.82	244.899	1.04	0.74	2.85	
3360.50	14.660	244.100	3297.85	-50.19	-226.03	-481.85	1667010.06	14316630.17	39°25'29.391"N	80°54'21.016"W	532.23	244.869	0.49	-0.48	-0.31	
3455.50	15.050	248.050	3389.67	-51.96	-235.89	-504.10	1666987.82	14316620.31	39°25'29.294"N	80°54'21.267"W	556.56	244.923	1.14	0.41	4.16	
3550.50	14.460	246.050	3481.54	-53.33	-245.33	-526.38	1666965.55	14316610.88	39°25'29.201"N	80°54'21.551"W	580.74	245.011	0.83	-0.62	-2.16	
3644.50	13.740	244.140	3572.71	-55.40	-254.97	-547.14	1666944.79	14316601.24	39°25'29.106"N	80°54'21.816"W	603.63	245.015	0.90	-0.77	-1.98	
3739.50	14.980	246.820	3664.74	-57.34	-264.72	-568.58	1666923.36	14316591.49	39°25'29.010"N	80°54'22.089"W	627.19	245.034	1.48	1.31	2.82	
3833.50	14.460	245.430	3755.66	-59.07	-274.38	-590.42	1666901.53	14316581.83	39°25'28.914"N	80°54'22.367"W	651.07	245.075	0.67	-0.55	-1.48	
3928.50	14.940	243.470	3847.55	-61.52	-284.79	-612.17	1666879.79	14316571.43	39°25'28.812"N	80°54'22.645"W	675.17	245.052	0.73	0.51	-2.06	
4022.50	14.200	241.640	3938.52	-64.69	-295.67	-633.15	1666858.81	14316560.55	39°25'28.704"N	80°54'22.912"W	698.78	244.968	0.93	-0.79	-1.95	
4117.50	15.070	245.020	4030.44	-67.58	-306.43	-654.60	1666837.37	14316549.80	39°25'28.598"N	80°54'23.186"W	722.77	244.915	1.28	0.92	3.56	
4212.50	14.810	250.480	4122.23	-68.67	-315.70	-677.24	1666814.74	14316540.53	39°25'28.507"N	80°54'23.474"W	747.21	245.007	1.51	-0.27	5.75	
4306.50	14.000	248.360	4213.28	-69.00	-323.91	-699.14	1666792.86	14316532.33	39°25'28.426"N	80°54'23.753"W	770.52	245.142	1.03	-0.86	-2.26	
4401.50	13.090	245.300	4305.64	-70.32	-332.64	-719.59	1666772.41	14316523.60	39°25'28.340"N	80°54'24.014"W	792.76	245.191	1.22	-0.96	-3.22	
4495.50	13.470	243.610	4397.12	-72.52	-341.95	-739.07	1666752.94	14316514.29	39°25'28.248"N	80°54'24.263"W	814.34	245.171	0.58	0.40	-1.80	
4590.50	14.200	246.030	4489.37	-74.67	-351.61	-759.63	1666732.39	14316504.64	39°25'28.153"N	80°54'24.525"W	837.06	245.162	0.98	0.77	2.55	
4684.50	15.050	249.520	4580.32	-75.68	-360.56	-781.60	1666710.43	14316495.69	39°25'28.065"N	80°54'24.805"W	860.75	245.236	1.30	0.90	3.71	
4779.50	14.450	247.080	4672.19	-76.51	-369.49	-804.07	1666687.97	14316486.76	39°25'27.976"N	80°54'25.091"W	884.90	245.320	0.91	-0.63	-2.87	
4873.50	15.990	245.480	4762.89	-78.25	-379.43	-826.65	1666665.39	14316476.82	39°25'27.878"N	80°54'25.379"W	909.57	245.345	1.70	1.64	-1.70	
4968.50	15.640	242.010	4854.30	-81.18	-390.87	-849.87	1666642.19	14316465.39	39°25'27.766"N	80°54'25.675"W	935.44	245.301	1.06	-0.37	-3.65	
5063.50	14.730	237.660	4945.98	-85.67	-403.34	-871.38	1666620.68	14316452.92	39°25'27.643"N	80°54'25.949"W	960.20	245.161	1.53	-0.96	-4.58	
5158.50	14.320	240.140	5037.95	-90.37	-415.65	-891.77	1666600.30	14316440.62	39°25'27.521"N	80°54'26.209"W	983.88	245.010	0.78	-0.43	2.61	
5253.50	14.590	237.390	5129.94	-95.11	-427.95	-912.04	1666580.04	14316428.32	39°25'27.400"N	80°54'26.468"W	1007.45	244.863	0.78	0.28	-2.89	
5347.50	14.730	242.630	5220.89	-99.34	-439.83	-932.63	1666559.46	14316416.45	39°25'27.283"N	80°54'26.730"W	1031.14	244.751	1.42	0.15	5.57	
5442.50	14.780	246.170	5312.76	-101.82	-450.28	-954.44	1666537.66	14316406.01	39°25'27.180"N	80°54'27.008"W	1055.32	244.743	0.95	0.05	3.73	

RECEIVED
Office of Oil and Gas
FEB 20 2019
WV Department of
Environmental Protection



Actual Wellpath Report

Mysis Unit 1H AWP Proj: 14156'

Page 4 of 9



REFERENCE WELLPATH IDENTIFICATION		Slot	Slot #01
Operator	ANTERO RESOURCES CORPORATION	Well	Mysis Unit 1H
Area	Tyler County, WV	Wellbore	Mysis Unit 1H AWB
Field	Tyler		
Facility	Vera Pad		

WELLPATH DATA (174 stations) † = interpolated/extrapolated station															
MD (ft)	Inclination (°)	Azimuth (°)	TVD (ft)	Vert.Sect (ft)	North (ft)	East (ft)	Grid East (ft)	Grid North (ft)	Latitude	Longitude	Closure Dist (ft)	DLS (ft)	Build Rate (°/100ft)	Turn Rate (°/100ft)	Comments
5537.50	14.880	244.480	5404.59	-103.92	-460.43	-976.53	1666515.57	14316395.86	39°25'27.079"N	80°54'27.290"W	1079.63	244.756	0.47	0.11	-1.78
5631.50	14.570	248.290	5495.51	-105.55	-470.00	-998.41	1666493.71	14316386.29	39°25'26.895"N	80°54'27.569"W	1103.50	244.791	1.08	-0.33	4.05
5726.50	14.160	246.260	5587.54	-106.78	-479.10	-1020.15	1666471.98	14316377.20	39°25'26.895"N	80°54'27.846"W	1127.05	244.843	0.68	-0.43	-2.14
5820.50	13.890	244.030	5678.73	-108.81	-488.67	-1040.81	1666451.32	14316367.63	39°25'26.801"N	80°54'28.110"W	1149.82	244.850	0.64	-0.29	-2.37
5915.50	14.890	247.170	5770.75	-110.72	-498.40	-1062.32	1666429.82	14316357.91	39°25'26.705"N	80°54'28.384"W	1173.42	244.866	1.33	1.05	3.31
6009.50	14.660	244.900	5861.65	-112.49	-508.13	-1084.22	1666407.93	14316348.18	39°25'26.609"N	80°54'28.663"W	1197.38	244.889	0.66	-0.24	-2.41
6103.50	14.010	250.670	5952.72	-113.53	-516.94	-1105.73	1666386.43	14316339.37	39°25'26.522"N	80°54'28.937"W	1220.60	244.943	1.67	-0.69	6.14
6135.50	13.180	260.670	5993.83	-112.84	-518.82	-1112.99	1666379.17	14316337.01	39°25'26.504"N	80°54'29.030"W	1227.97	245.007	7.78	-2.59	31.25
6167.50	13.260	271.720	6014.99	-110.84	-519.30	-1120.25	1666371.91	14316337.01	39°25'26.499"N	80°54'29.122"W	1234.76	245.130	7.89	0.25	34.53
6198.50	14.090	281.030	6045.11	-107.61	-518.47	-1127.51	1666364.65	14316337.84	39°25'26.507"N	80°54'29.215"W	1241.01	245.305	7.58	2.68	30.03
6229.50	15.600	290.460	6075.08	-102.99	-516.29	-1135.12	1666357.05	14316340.02	39°25'26.529"N	80°54'29.312"W	1247.02	245.542	9.18	4.87	30.42
6261.50	18.130	296.180	6105.71	-96.64	-512.59	-1143.62	1666348.55	14316343.72	39°25'26.566"N	80°54'29.420"W	1253.25	245.857	9.45	7.91	17.87
6292.50	20.920	300.970	6134.92	-88.89	-507.61	-1152.70	1666339.47	14316348.70	39°25'26.615"N	80°54'29.536"W	1259.52	246.233	10.37	9.00	15.45
6324.50	23.730	305.970	6164.52	-79.15	-500.89	-1162.81	1666329.37	14316355.42	39°25'26.681"N	80°54'29.664"W	1266.11	246.686	10.59	8.78	15.63
6355.50	25.260	312.080	6192.74	-68.17	-492.79	-1172.77	1666319.41	14316363.51	39°25'26.762"N	80°54'29.791"W	1272.10	247.208	9.54	4.94	19.71
6387.50	26.240	319.010	6221.57	-55.55	-482.87	-1182.48	1666309.70	14316373.43	39°25'26.860"N	80°54'29.915"W	1277.28	247.787	9.89	3.06	21.66
6418.50	27.230	326.150	6249.26	-42.29	-471.81	-1190.93	1666301.26	14316384.49	39°25'26.969"N	80°54'30.022"W	1280.98	248.388	10.84	3.19	23.03
6450.50	28.540	332.420	6277.55	-27.61	-458.95	-1198.55	1666293.64	14316397.34	39°25'27.096"N	80°54'30.119"W	1283.42	249.047	10.03	4.09	19.59
6481.50	31.690	335.220	6304.36	-12.16	-444.99	-1205.39	1666286.80	14316411.30	39°25'27.234"N	80°54'30.206"W	1284.91	249.738	11.12	10.16	9.03
6512.50	34.030	335.930	6330.40	4.60	-429.67	-1212.35	1666279.85	14316426.61	39°25'27.386"N	80°54'30.295"W	1286.23	250.485	7.65	7.55	2.29
6544.50	36.570	335.820	6356.51	23.04	-412.80	-1219.90	1666272.30	14316443.47	39°25'27.553"N	80°54'30.391"W	1287.85	251.305	7.94	7.94	-0.34
6575.50	38.820	336.260	6381.04	41.94	-395.47	-1227.60	1666264.61	14316462.61	39°25'27.724"N	80°54'30.489"W	1289.73	252.144	7.31	7.26	1.42
6607.00†	41.182	337.314	6405.17	62.15	-376.87	-1235.57	1666256.63	14316479.39	39°25'27.908"N	80°54'30.590"W	1291.77	253.038	7.80	7.50	3.35
6607.50	41.220	337.330	6405.55	62.48	-376.56	-1235.70	1666256.51	14316479.69	39°25'27.911"N	80°54'30.592"W	1291.80	253.052	7.80	7.51	3.18
6645.00	45.040	338.520	6432.91	88.09	-352.81	-1245.33	1666246.89	14316503.44	39°25'28.146"N	80°54'30.714"W	1294.34	254.182	10.41	10.19	3.17
6663.00	47.160	339.340	6445.39	101.05	-340.70	-1249.99	1666242.23	14316515.54	39°25'28.265"N	80°54'30.773"W	1295.59	254.754	12.23	11.78	4.56
6710.00	53.110	338.130	6475.50	137.10	-307.11	-1263.08	1666229.14	14316549.12	39°25'28.598"N	80°54'30.940"W	1299.88	256.334	12.81	12.66	-2.57
6756.00†	58.725	336.650	6501.27	175.13	-271.96	-1277.74	1666214.49	14316584.26	39°25'28.945"N	80°54'31.126"W	1306.36	257.984	12.49	12.21	-3.22
6758.00	58.970	336.590	6502.31	176.84	-270.39	-1278.41	1666213.81	14316585.83	39°25'28.951"N	80°54'31.135"W	1306.70	258.058	12.49	12.23	-3.01
6805.00	64.290	334.850	6524.63	218.04	-232.71	-1295.43	1666195.81	14316623.49	39°25'29.333"N	80°54'31.351"W	1316.16	259.816	11.78	11.32	-3.70

RECEIVED
Office of Oil and Gas

FEB 20 2019

WV Department of
Environmental Protection



Actual Wellpath Report

Mysis Unit 1H AWP Proj: 14156'

Page 5 of 9



REFERENCE WELLPATH IDENTIFICATION	
Operator	ANTERO RESOURCES CORPORATION
Area	Tyler County, WV
Field	Tyler
Facility	Vera Pad
Slot #01	
Mysis Unit 1H	
Mysis Unit 1H AWB	

WELLPATH DATA (174 stations) + = interpolated/extrapolated station																
MD ft	Inclination °	Azimuth °	TVD ft	Vert Sect ft	North ft	East ft	Grid East ft	Grid North ft	Latitude	Longitude	Closure Dist ft	Closure Dir °	DLS F/100ft	Build Rate F/100ft	Turn Rate F/100ft	Comments
6813.00	65.081	334.450	6528.05	225.24	-226.18	-1298.52	1666193.71	14316630.02	39°25'29.398"N	80°54'31.390"W	1318.07	260.119	10.87	9.88	-5.00	Tully: 6813' MD
6852.00	68.950	332.570	6543.28	260.89	-194.05	-1314.54	1666177.70	14316662.13	39°25'29.716"N	80°54'31.594"W	1328.79	261.603	10.87	9.92	-4.82	
6892.00	72.984	332.314	6556.32	298.34	-160.54	-1332.03	1666160.21	14316695.63	39°25'30.047"N	80°54'31.816"W	1341.67	263.128	10.10	10.09	-0.64	Marcellus POE: 6892' MD
6899.00	73.690	332.270	6558.33	304.98	-154.60	-1335.15	1666157.10	14316701.57	39°25'30.106"N	80°54'31.856"W	1344.07	263.395	10.10	10.09	-0.62	
6947.00	77.560	335.880	6570.25	351.10	-113.15	-1366.20	1666136.06	14316743.80	39°25'30.516"N	80°54'32.124"W	1360.91	265.231	8.69	8.08	3.35	
6994.00	81.130	335.980	6578.94	397.08	-71.32	-1375.76	1666116.51	14316784.81	39°25'30.929"N	80°54'32.372"W	1377.61	267.032	8.77	7.60	4.47	
7041.00	84.730	337.760	6584.72	443.63	-28.43	-1394.08	1666098.20	14316827.68	39°25'31.353"N	80°54'32.605"W	1394.36	268.832	8.53	7.66	3.79	
7100.00	89.750	340.310	6597.56	502.52	26.57	-1415.15	1666077.13	14316882.67	39°25'31.897"N	80°54'32.873"W	1415.40	271.076	9.54	8.51	4.32	
7136.00	89.910	340.660	6597.67	538.52	60.51	-1427.18	1666065.11	14316916.59	39°25'32.233"N	80°54'33.026"W	1428.46	272.428	1.07	0.44	0.97	
7230.00	90.930	342.430	6597.06	632.49	149.67	-1456.93	1666035.37	14317005.71	39°25'33.114"N	80°54'33.404"W	1464.60	275.865	2.12	0.98	1.88	
7325.00	90.030	342.110	6596.35	727.43	240.15	-1485.86	1666006.45	14317096.16	39°25'34.009"N	80°54'33.771"W	1505.14	279.181	0.91	-0.84	-0.34	
7421.00	91.200	342.520	6595.32	823.36	331.61	-1515.02	1665977.30	14317187.58	39°25'34.913"N	80°54'34.142"W	1550.89	282.346	1.29	1.22	0.43	
7515.00	90.550	339.120	6583.88	917.33	420.36	-1545.89	1665946.44	14317276.30	39°25'35.790"N	80°54'34.534"W	1602.03	285.212	3.68	-0.69	-3.62	
7610.00	90.520	337.620	6582.99	1012.27	508.67	-1580.91	1665911.44	14317364.57	39°25'36.664"N	80°54'34.979"W	1660.73	287.836	1.58	-0.03	-1.58	
7704.00	90.490	336.560	6582.17	1106.12	595.25	-1617.50	1665874.86	14317451.11	39°25'37.520"N	80°54'35.444"W	1723.55	290.204	1.13	-0.03	-1.13	
7799.00	90.520	334.980	6581.33	1200.82	681.87	-1656.49	1665835.89	14317537.70	39°25'38.376"N	80°54'35.940"W	1791.34	292.374	1.66	0.03	-1.66	
7893.00	90.460	335.080	6580.52	1294.42	767.08	-1696.17	1665796.23	14317622.88	39°25'39.219"N	80°54'36.445"W	1861.56	294.335	0.12	-0.06	0.11	
7988.00	90.490	337.500	6579.74	1389.18	854.06	-1734.36	1665758.05	14317709.82	39°25'40.079"N	80°54'36.930"W	1933.24	296.217	2.55	0.03	2.55	
8083.00	90.550	335.250	6578.87	1484.12	942.36	-1769.37	1665723.05	14317798.09	39°25'40.952"N	80°54'37.375"W	2004.67	298.040	1.84	0.06	1.84	
8177.00	90.650	340.530	6577.89	1578.11	1030.63	-1801.69	1665690.75	14317886.32	39°25'41.824"N	80°54'37.866"W	2075.64	299.771	1.37	0.11	1.36	
8272.00	90.620	342.300	6576.84	1673.09	1120.66	-1831.96	1665660.49	14317976.32	39°25'42.715"N	80°54'38.357"W	2147.55	301.455	1.86	-0.03	1.86	
8367.00	90.580	343.160	6575.84	1767.99	1211.37	-1860.16	1665632.30	14318066.99	39°25'43.611"N	80°54'38.848"W	2219.83	303.073	0.91	-0.04	0.91	
8462.00	90.520	343.310	6574.93	1862.86	1302.33	-1887.56	1665604.91	14318157.91	39°25'44.511"N	80°54'39.339"W	2293.24	304.604	0.17	-0.06	0.16	
8557.00	90.370	343.440	6574.19	1957.72	1393.36	-1914.74	1665577.74	14318248.90	39°25'45.411"N	80°54'39.830"W	2368.06	306.043	0.21	-0.16	0.14	
8652.00	90.220	341.460	6573.70	2052.65	1483.99	-1943.39	1665549.11	14318339.44	39°25'46.306"N	80°54'39.886"W	2445.16	307.365	2.09	-0.16	-2.08	
8747.00	90.400	340.230	6573.19	2147.64	1573.67	-1974.56	1665517.95	14318429.14	39°25'47.193"N	80°54'39.982"W	2524.94	308.554	1.31	0.19	-1.29	
8842.00	90.220	340.450	6572.67	2242.64	1663.13	-2006.52	1665486.00	14318518.56	39°25'48.078"N	80°54'40.389"W	2606.17	309.694	0.30	-0.19	0.23	
8937.00	90.220	341.760	6572.31	2337.62	1753.01	-2037.28	1665455.25	14318608.41	39°25'48.966"N	80°54'40.779"W	2687.67	310.711	1.38	0.00	1.38	
9033.00	90.340	341.080	6571.84	2433.60	1844.00	-2067.87	1665424.67	14318699.37	39°25'49.866"N	80°54'41.168"W	2770.64	311.725	0.72	0.12	-0.71	
9127.00	90.220	341.760	6571.38	2527.58	1933.10	-2097.82	1665394.73	14318788.43	39°25'50.747"N	80°54'41.549"W	2852.67	312.660	0.73	-0.13	0.72	

RECEIVED
Office of Oil and Gas

FEB 20 2019

WV Department of
Environmental Protection



Actual Wellpath Report

Mysis Unit 1H AWP Proj: 14156'

Page 6 of 9



04/05/2019

REFERENCE WELLPATH IDENTIFICATION		Slot	Slot #01
Operator	ANTERO RESOURCES CORPORATION	Well	Mysis Unit 1H
Area	Tyler County, WV	Wellbore	Mysis Unit 1H AWB
Field	Tyler		
Facility	Vera Pad		

WELLPATH DATA (174 stations)																
MD (ft)	Inclination (°)	Azimuth (°)	TVD (ft)	Vert Sect (ft)	North (ft)	East (ft)	Grid East (US ft)	Grid North (US ft)	Latitude	Longitude	Closure Dist (ft)	Closure Dir (°)	DLS (F/100ft)	Build Rate (F/100ft)	Turn Rate (F/100ft)	Comments
9222.00	90.340	341.830	6570.92	2822.55	2023.34	-2127.50	1665365.07	14318878.64	39°25'51.639"N	80°54'41.926"W	2936.01	313.563	0.15	0.13	0.07	
9317.00	90.310	341.320	6570.38	2717.52	2113.47	-2157.53	1665335.05	14318968.73	39°25'52.530"N	80°54'42.307"W	3020.21	314.409	0.54	-0.03	-0.54	
9412.00	90.370	341.650	6569.81	2812.50	2203.55	-2187.69	1665304.90	14319058.77	39°25'53.421"N	80°54'42.691"W	3105.10	315.207	0.35	0.06	0.35	
9506.00	90.370	341.240	6569.21	2906.48	2292.66	-2217.60	1665275.00	14319147.85	39°25'54.302"N	80°54'43.071"W	3189.68	315.953	0.44	0.00	-0.44	
9601.00	90.280	340.340	6568.67	3001.47	2382.37	-2248.86	1665243.75	14319237.52	39°25'55.189"N	80°54'43.468"W	3276.14	316.651	0.95	-0.09	-0.95	
9697.00	90.280	340.240	6568.20	3097.47	2472.75	-2281.24	1665211.39	14319327.86	39°25'56.082"N	80°54'43.879"W	3364.30	317.307	0.10	0.00	-0.10	
9792.00	90.280	340.940	6567.74	3192.47	2562.35	-2312.81	1665179.83	14319417.42	39°25'56.968"N	80°54'44.281"W	3451.77	317.930	0.74	0.00	0.74	
9887.00	90.250	340.060	6567.30	3287.47	2651.90	-2344.52	1665148.13	14319506.94	39°25'57.854"N	80°54'44.684"W	3539.68	318.520	0.93	-0.03	-0.93	
9982.00	90.220	340.180	6566.91	3382.46	2741.23	-2376.82	1665115.84	14319596.24	39°25'58.737"N	80°54'45.094"W	3628.17	319.073	0.13	-0.03	0.13	
10077.00	90.180	339.930	6566.57	3477.46	2830.53	-2409.23	1665083.45	14319685.50	39°25'59.620"N	80°54'45.506"W	3717.03	319.597	0.27	-0.04	-0.26	
10171.00	90.250	341.270	6566.22	3571.46	2919.19	-2440.45	1665052.24	14319774.13	39°26'00.496"N	80°54'45.903"W	3804.93	320.104	1.43	0.07	1.43	
10266.00	90.250	341.360	6565.81	3666.44	3009.19	-2470.89	1665021.82	14319864.08	39°26'01.386"N	80°54'46.290"W	3893.65	320.610	0.09	0.00	0.09	
10361.00	90.310	342.220	6565.34	3761.41	3099.43	-2500.57	1664992.14	14319954.29	39°26'02.278"N	80°54'46.667"W	3982.38	321.104	0.91	0.06	0.91	
10455.00	90.400	341.190	6564.76	3855.38	3188.67	-2530.08	1664962.65	14320043.50	39°26'03.161"N	80°54'47.042"W	4070.50	321.569	1.10	0.10	-1.10	
10550.00	90.400	339.380	6564.10	3950.37	3278.10	-2562.13	1664930.62	14320132.89	39°26'04.045"N	80°54'47.449"W	4160.58	321.989	1.91	0.00	-1.91	
10645.00	90.310	337.550	6563.51	4045.32	3366.46	-2597.00	1664895.76	14320221.21	39°26'04.918"N	80°54'47.893"W	4251.76	322.352	1.93	-0.09	-1.93	
10739.00	90.310	336.350	6563.00	4139.15	3452.95	-2633.80	1664856.97	14320307.67	39°26'05.774"N	80°54'48.361"W	4342.78	322.665	1.28	0.00	-1.28	
10833.00	90.310	337.140	6562.49	4232.97	3539.31	-2670.91	1664821.87	14320394.00	39°26'06.627"N	80°54'48.833"W	4434.02	322.960	0.84	0.00	0.84	
10929.00	90.280	337.620	6562.00	4328.85	3627.93	-2707.83	1664784.97	14320482.58	39°26'07.504"N	80°54'49.302"W	4527.05	323.263	0.50	-0.03	0.50	
11023.00	90.310	338.230	6561.51	4422.77	3715.04	-2743.16	1664749.65	14320569.65	39°26'08.365"N	80°54'49.751"W	4618.05	323.558	0.65	0.03	0.65	
11118.00	90.310	339.260	6561.00	4517.73	3803.57	-2777.60	1664715.23	14320658.15	39°26'09.240"N	80°54'50.189"W	4709.80	323.861	1.08	0.00	1.08	
11213.00	90.340	339.360	6560.46	4612.72	3892.44	-2811.16	1664681.68	14320746.99	39°26'10.119"N	80°54'50.616"W	4801.43	324.163	0.11	0.03	0.11	
11308.00	90.430	339.810	6559.82	4707.71	3981.47	-2844.30	1664648.56	14320835.98	39°26'11.099"N	80°54'51.037"W	4893.07	324.459	0.48	0.09	0.47	
11403.00	90.280	340.780	6559.23	4802.70	4070.91	-2876.33	1664616.54	14320925.38	39°26'11.883"N	80°54'51.444"W	4984.53	324.757	1.03	-0.16	1.02	
11498.00	90.370	339.830	6558.69	4897.70	4160.35	-2908.35	1664584.53	14321014.78	39°26'12.768"N	80°54'51.851"W	5076.12	325.044	1.00	0.09	-1.00	
11592.00	90.340	339.340	6558.11	4991.69	4248.44	-2941.13	1664551.76	14321102.84	39°26'13.639"N	80°54'52.268"W	5167.16	325.306	0.52	-0.03	-0.52	
11686.00	90.280	340.110	6557.60	5085.68	4336.62	-2973.71	1664519.20	14321190.98	39°26'14.510"N	80°54'52.682"W	5258.25	325.561	0.82	-0.06	0.82	
11781.00	90.400	340.080	6557.04	5180.68	4425.94	-3006.05	1664486.87	14321280.27	39°26'15.393"N	80°54'53.093"W	5350.26	325.816	0.13	0.13	-0.03	
11875.00	90.370	340.550	6556.41	5274.68	4514.44	-3037.71	1664455.22	14321368.74	39°26'16.269"N	80°54'53.496"W	5441.31	326.064	0.50	-0.03	0.50	
11970.00	90.860	341.570	6555.39	5369.66	4604.29	-3088.55	1664424.40	14321458.55	39°26'17.157"N	80°54'53.888"W	5533.13	326.318	1.19	0.52	1.07	

RECEIVED
Office of Oil and Gas

FEB 20 2019

WV Department of
Environmental Protection



Actual Wellpath Report

Mysis Unit 1H AWP Proj: 14156'
Page 7 of 9



REFERENCE WELLPATH IDENTIFICATION	
Operator	ANTERO RESOURCES CORPORATION
Area	Tyler County, WV
Field	Tyler
Facility	Vera Pad
Slot	Slot #01
Mysis Unit 1H	Mysis Unit 1H
Mysis Unit 1H AWB	Mysis Unit 1H AWB

WELLPATH DATA (174 stations)																
MD ft	Inclination °	Azimuth °	TVD ft	Vert Sect ft	North ft	East ft	Grid East ft	Grid North ft	Latitude	Longitude	Closure Dist ft	Closure Dir °	DLS F/100ft	Build Rate F/100ft	Turn Rate F/100ft	Comments
12064.00	90.490	341.670	6554.28	5463.63	4693.49	-3098.18	1664394.77	14321547.71	39°26'18.039"N	80°54'54.264"W	5623.84	326.571	0.41	-0.39	0.11	
12158.00	90.310	341.210	6553.62	5557.61	4782.60	-3128.10	1664364.87	14321636.79	39°26'18.970"N	80°54'54.645"W	5714.74	326.813	0.53	-0.19	-0.49	
12253.00	90.620	343.310	6552.85	5652.54	4873.07	-3157.05	1664335.93	14321727.22	39°26'19.814"N	80°54'55.012"W	5806.36	327.063	2.23	0.33	2.21	
12346.00	90.000	343.610	6552.35	5745.40	4962.22	-3183.52	1664309.47	14321816.34	39°26'20.695"N	80°54'55.349"W	5895.63	327.318	0.74	-0.67	0.32	
12440.00	90.430	341.940	6552.00	5839.31	5052.00	-3211.36	1664281.65	14321906.08	39°26'21.583"N	80°54'55.702"W	5986.28	327.558	1.83	0.46	-1.78	
12535.00	90.650	340.330	6551.10	5934.29	5141.89	-3242.07	1664250.94	14321995.94	39°26'22.472"N	80°54'56.093"W	6078.66	327.768	1.71	0.23	-1.69	
12629.00	90.490	339.110	6550.17	6028.28	5230.06	-3274.65	1664218.38	14322084.07	39°26'23.343"N	80°54'56.507"W	6170.65	327.948	1.31	-0.17	-1.30	
12724.00	90.490	337.980	6549.35	6123.23	5318.47	-3309.40	1664183.65	14322172.44	39°26'24.218"N	80°54'56.949"W	6264.04	328.108	1.19	0.00	-1.19	
12818.00	90.430	338.330	6548.60	6217.16	5405.72	-3344.37	1664148.68	14322259.66	39°26'25.080"N	80°54'57.394"W	6356.82	328.256	0.38	-0.06	0.37	
12913.00	90.430	338.370	6547.89	6312.10	5494.02	-3379.42	1664113.65	14322347.92	39°26'25.953"N	80°54'57.839"W	6450.17	328.404	0.04	0.00	0.04	
13008.00	90.460	338.360	6547.15	6407.05	5582.32	-3414.44	1664078.64	14322436.19	39°26'26.826"N	80°54'58.285"W	6543.76	328.548	0.03	0.03	-0.01	
13103.00	90.490	337.760	6546.38	6501.97	5670.44	-3449.94	1664043.16	14322524.27	39°26'27.698"N	80°54'58.736"W	6637.46	328.683	0.63	0.03	-0.63	
13198.00	90.550	338.980	6545.50	6596.91	5758.74	-3484.97	1664008.14	14322612.53	39°26'28.571"N	80°54'59.181"W	6731.13	328.819	1.26	0.06	1.26	
13293.00	91.050	341.580	6544.17	6691.90	5848.15	-3517.03	1663976.10	14322701.90	39°26'29.445"N	80°54'59.589"W	6824.24	328.978	2.82	0.53	2.77	
13388.00	90.830	342.800	6542.61	6786.83	5938.58	-3546.07	1663947.06	14322792.30	39°26'30.349"N	80°54'59.958"W	6916.75	329.158	1.29	-0.23	1.27	
13484.00	90.680	343.030	6541.35	6882.72	6030.34	-3574.27	1663918.87	14322884.02	39°26'31.256"N	80°55'00.317"W	7010.02	329.344	0.29	-0.16	0.24	
13578.00	90.340	344.080	6540.51	6976.56	6120.49	-3600.88	1663892.28	14322974.14	39°26'32.147"N	80°55'00.655"W	7101.18	329.530	1.17	-0.36	1.12	
13672.00	90.490	344.260	6539.83	7070.34	6210.92	-3626.52	1663866.65	14323064.53	39°26'33.041"N	80°55'00.980"W	7192.16	329.720	0.25	0.16	0.19	
13767.00	90.550	344.550	6538.97	7165.09	6302.42	-3652.06	1663841.12	14323155.99	39°26'33.946"N	80°55'01.305"W	7284.09	329.909	0.31	0.06	0.31	
13862.00	90.710	345.600	6537.92	7259.75	6394.21	-3676.53	1663816.66	14323247.74	39°26'34.853"N	80°55'01.616"W	7375.82	330.102	1.12	0.17	1.11	
13957.00	90.370	341.980	6537.03	7354.55	6485.41	-3703.03	1663790.17	14323338.91	39°26'35.755"N	80°55'01.952"W	7468.13	330.275	3.82	-0.36	-3.80	
14053.00	90.460	336.450	6536.33	7450.50	6575.13	-3737.08	1663756.13	14323428.60	39°26'36.642"N	80°55'02.385"W	7562.94	330.388	5.77	0.09	-5.77	
14132.00	90.620	337.120	6535.59	7529.35	6647.73	-3768.22	1663725.01	14323501.17	39°26'37.559"N	80°55'02.781"W	7641.45	330.454	0.87	0.20	0.85	
14156.00	90.620	337.120	6535.33	7553.31	6669.84	-3777.55	1663715.68	14323523.27	39°26'37.578"N	80°55'02.900"W	7665.29	330.474	0.00	0.00	0.00	Projected MD at TD: 14156'

04/05/2019

RECEIVED
Office of Oil and Gas
FEB 20 2019
WV Department of
Environmental Protection



Actual Wellpath Report

Mysis Unit 1H AWP Proj: 14156'

Page 8 of 9



REFERENCE WELLPATH IDENTIFICATION

Operator	ANTERO RESOURCES CORPORATION	Slot #01
Area	Tyler County, WV	Mysis Unit 1H
Field	Tyler	Mysis Unit 1H AWB
Facility	Vera Pad	

HOLE & CASING SECTIONS - Ref Wellbore: Mysis Unit 1H AWB Ref Wellpath: Mysis Unit 1H AWP Proj: 14156'

String/Diameter	Start MD [ft]	End MD [ft]	Interval [ft]	Start TVD [ft]	End TVD [ft]	Start NIS [ft]	Start EIW [ft]	End NIS [ft]	End EIW [ft]
20in Conductor	24.50	104.50	80.00	24.50	104.50	0.00	0.00	-0.07	0.00
17.5in Open Hole	104.50	751.40	646.90	104.50	751.40	-0.07	0.00	-1.85	0.26
13.375in Casing Surface	24.50	751.40	726.90	24.50	751.40	0.00	0.00	-1.85	0.26
12.25in Open Hole	751.40	2573.30	1821.90	751.40	2535.91	-1.85	0.26	-141.68	-303.13
9.625in Casing Intermediate	24.50	2573.30	2548.80	24.50	2535.91	0.00	0.00	-141.68	-303.13
8.75in Open Hole	2573.30	6677.50	4104.20	2535.91	6455.08	-141.68	-303.13	-330.62	-1253.83
8.5in Open Hole	6677.50	14156.00	7478.50	6455.08	6535.33	-330.62	-1253.83	6669.84	-3777.55
5.5in Casing Production	24.50	14156.00	14131.50	24.50	6535.33	0.00	0.00	6669.84	-3777.55

TARGETS

Name	TVD [ft]	North [ft]	East [ft]	Grid East [US ft]	Grid North [US ft]	Latitude	Longitude	Shape
Mysis Unit 1H BHL Rev-2	6587.00	6666.24	-3801.24	1663691.99	14323519.67	39°26'37.543"N	80°55'03.202"W	point
Mysis Unit 1H LP Rev-1	6587.00	27.57	-1421.55	1666070.73	14316883.66	39°25'31.907"N	80°54'32.955"W	point

WELLPATH COMPOSITION - Ref Wellbore: Mysis Unit 1H AWB Ref Wellpath: Mysis Unit 1H AWP Proj: 14156'

Start MD [ft]	End MD [ft]	Positional Uncertainty Model	Log Name/Comment
24.50	721.50	Gyrodata standard - Drop gyro or Multi-shot	01_Gyrodata MS Gyro <17-1/2">(100-712)
721.50	838.50	Gyrodata standard - Drop gyro or Multi-shot	02_Gyrodata MS Gyro <12-1/4">(712)(738-829)
838.50	2491.50	ISCWSA MWD, Rev. 4 (Standard)	03_WFLEM <12-1/4">(829)(949-2482)
2491.50	6607.50	ISCWSA MWD, Rev. 4 (Standard)	04_WFLEM <8-3/4">(2482)(2594-6598)
6607.50	14132.00	BHI AutoTrak Curve (Short)	05_BHIAT Curve <8-1/2">(6607.5)(6645-14132)
14132.00	14156.00	Blind Drilling (std)	Projection to bit

RECEIVED
Office of Oil and Gas
FEB 20 2019
WV Department of
Environmental Protection

04/05/2019



Actual Wellpath Report

Mysis Unit 1H AWP Proj: 14156'

Page 9 of 9



REFERENCE WELLPATH IDENTIFICATION			
Operator	Area	Field	Facility
ANTERO RESOURCES CORPORATION	Tyler County, WV	Tyler	Vera Pad
		Wellbore	
		Well	
		Slot #01	
		Mysis Unit 1H	
		Mysis Unit 1H AWB	

COMMENTS

Wellpath general comments

API: 47-095-02394-0000
 BHI Job #: 8800847
 Rig: Frontier 22
 Duration: 10/04/2017-10/05/2017
 Gyrodatta MS Gyro <17-1/2"> (100'-712')
 Gyrodatta MS Gyro <12-1/4"> (712')(738'-829')
 WFT EM <12-1/4"> (829')(949'-2482')
 WFT EM <8-3/4"> (2482')(2594'-6598')
 BHI AT Curve <8-1/2"> (6607.5')(6645'-14132')
 Middlesex: 6607' MD
 Burkett: 6756' MD
 Tully: 6813' MD
 Marcellus POE: 6892' MD
 Projected MD at TD: 14156'

04/05/2019

RECEIVED
 Office of Oil and Gas
 FEB 20 2019
 WV Department of
 Environmental Protection