



# ANTERO RESOURCES CORPORATION

Location: Tyler County, WV  
 Field: Tyler  
 Facility: Vera Pad

Slot: Slot #02  
 Well: Mysis Unit 2H  
 Wellbore: Mysis Unit 2H PWB

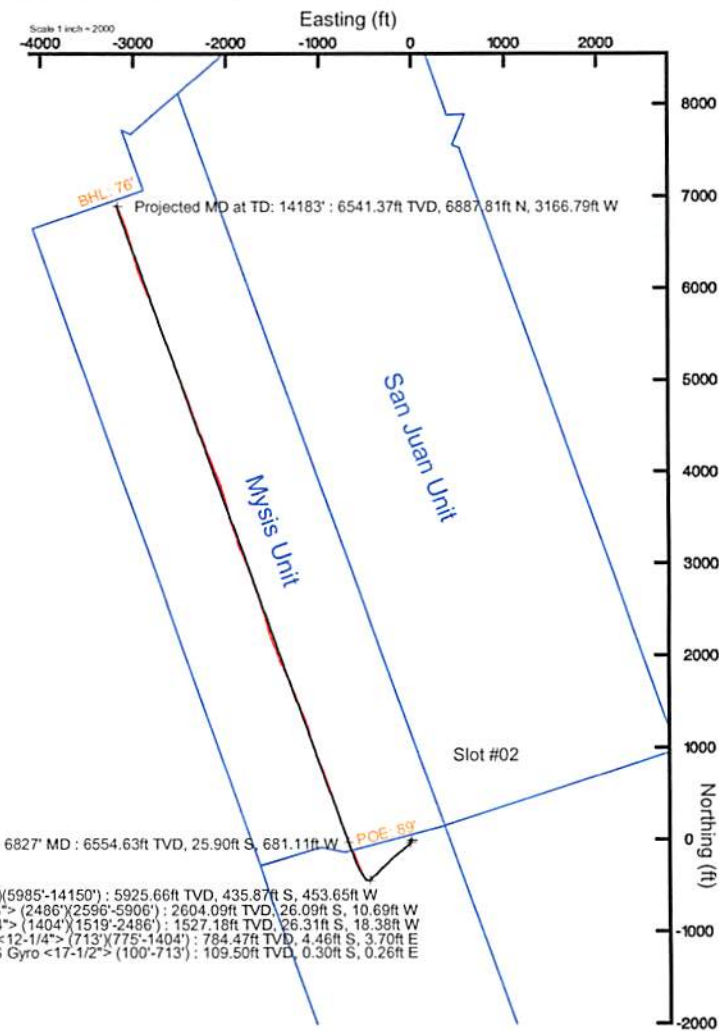
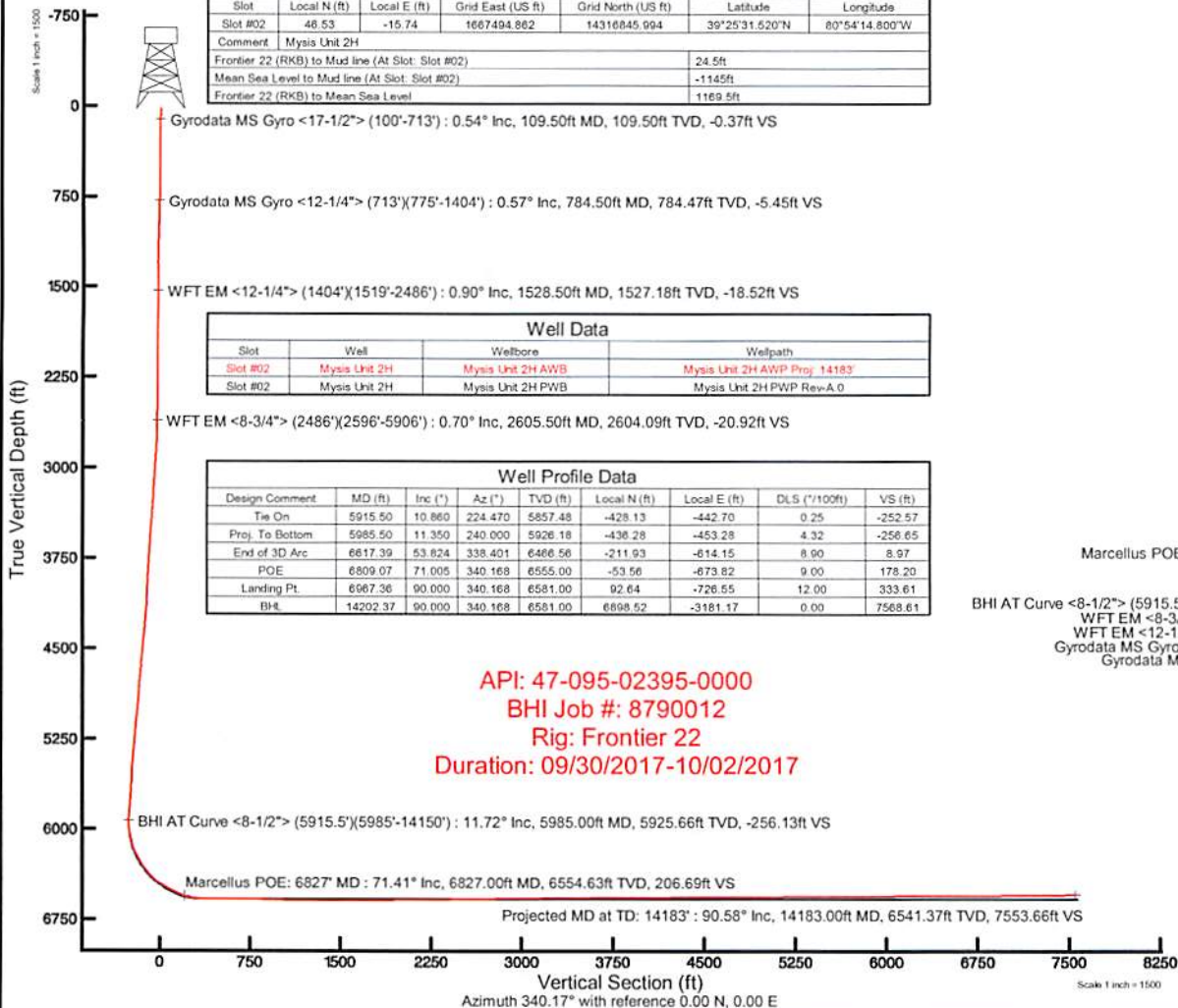


Plot reference wellpath is Mysis Unit 2H PWB Rev-A.0	Grid System: NAD27 / UTM Zone 17 North, US feet
True vertical depths are referenced to Frontier 22 (RKB)	North Reference: Grid north
Measured depths are referenced to Frontier 22 (RKB)	Scale: True distance
Frontier 22 (RKB) to Mean Sea Level: 1169.5 feet	Depths are in feet
Mean Sea Level to Mud line (At Slot: Slot #02) -1145 feet	Created by: delaset on 2017-11-01
Coordinates are in feet referenced to Slot	Database: WA_MPL_EasternUS_Defn

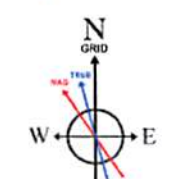
Location Information					
Facility Name		Grid East (US ft)	Grid North (US ft)	Latitude	Longitude
Vera Pad		1667510.600	14316799.487	39°25'31.060"N	80°54'14.600"W
Slot	Local N (ft)	Local E (ft)	Grid East (US ft)	Grid North (US ft)	Longitude
Slot #02	46.53	-15.74	1667494.862	14316845.994	80°54'14.800"W
Comment: Mysis Unit 2H					
Frontier 22 (RKB) to Mud line (At Slot: Slot #02)				24.5ft	
Mean Sea Level to Mud line (At Slot: Slot #02)				-1145ft	
Frontier 22 (RKB) to Mean Sea Level				1169.5ft	

Well Data			
Slot	Well	Wellbore	Wellpath
Slot #02	Mysis Unit 2H	Mysis Unit 2H AWB	Mysis Unit 2H AWP Proj. 14183'
Slot #02	Mysis Unit 2H	Mysis Unit 2H PWB	Mysis Unit 2H PWB Rev-A.0

Well Profile Data								
Design Comment	MD (ft)	Inc (")	Az (°)	TVD (ft)	Local N (ft)	Local E (ft)	DLS ("/100ft)	VS (ft)
Tie On	5915.50	10.860	224.470	5857.48	-428.13	-442.70	0.25	-252.57
Proj. To Bottom	5985.50	11.350	240.000	5926.18	-436.28	-453.28	4.32	-256.65
End of 3D Arc	6617.39	53.624	338.401	6466.56	-211.93	-614.15	8.90	8.97
POE	6809.07	71.005	340.168	6555.00	-53.56	-673.82	9.00	178.20
Landing Pt.	6667.36	90.000	340.168	6581.00	92.64	-726.55	12.00	333.61
BHL	14202.37	90.000	340.168	6581.00	6898.52	-3181.17	0.00	7568.61



BHI AT Curve <8-1/2"> (5915.5)(5985'-14150') : 5925.66ft TVD, 435.87ft S, 453.65ft W  
 WFT EM <8-3/4"> (2486)(2596'-5906') : 2604.09ft TVD, 26.09ft S, 10.69ft W  
 WFT EM <12-1/4"> (1404)(1519'-2486') : 1527.18ft TVD, 26.31ft S, 18.38ft W  
 Gyrodata MS Gyro <12-1/4"> (713)(775'-1404') : 784.47ft TVD, 4.46ft S, 3.70ft E  
 Gyrodata MS Gyro <17-1/2"> (100'-713') : 109.50ft TVD, 0.30ft S, 0.26ft E



User specified Dip: 66.68° Field: 51991 nT  
 Magnetic North is 7.62 degrees West of True North (at 28/Sep/2017)  
 Grid North is 0.06 degrees East of True North  
 To correct azimuth from True to Grid subtract 0.06 degrees  
 To correct azimuth from Magnetic to Grid subtract 7.68 degrees



# Actual Wellpath Report

Mysis Unit 2H AWP Proj: 14183'

Page 1 of 10



REFERENCE WELLPATH IDENTIFICATION			
Operator	ANTERO RESOURCES CORPORATION	Slot	Slot #02
Area	Tyler County, WV	Well	Mysis Unit 2H
Field	Tyler	Wellbore	Mysis Unit 2H AWB
Facility	Vera Pad		

REPORT SETUP INFORMATION			
Projection System	NAD27 / UTM Zone 17 North, US feet	Software System	WellArchitect® 5.1
North Reference	Grid	User	Delaset
Scale	0.999601	Report Generated	01/Nov/2017 at 16:07
Convergence at slot	0.06° East	Database/Source file	WA_MPL_EasternUS_Defn/Mysis_Unit_2H_AWP_Proj_14183_.xml

WELLPATH LOCATION						
	Local coordinates		Grid coordinates		Geographic coordinates	
	North[ft]	East[ft]	Easting[US ft]	Northing[US ft]	Latitude	Longitude
Slot Location	46.53	-15.74	1667494.86	14316845.99	39°25'31.520"N	80°54'14.800"W
Facility Reference Pt			1667510.60	14316799.49	39°25'31.060"N	80°54'14.600"W
Field Reference Pt			0.00	0.00	0°00'00.000"	85°29'19.301"W

WELLPATH DATUM			
Calculation method	Minimum curvature	Frontier 22 (RKB) to Facility Vertical Datum	24.50ft
Horizontal Reference Pt	Slot	Frontier 22 (RKB) to Mean Sea Level	1169.50ft
Vertical Reference Pt	Frontier 22 (RKB)	Frontier 22 (RKB) to Mud Line at Slot (Slot #02)	24.50ft
MD Reference Pt	Frontier 22 (RKB)	Section Origin	N 0.00, E 0.00 ft
Field Vertical Reference	Mean Sea Level	Section Azimuth	340.17°

RECEIVED  
 Office of Oil and Gas  
 FEB 13 2019  
 WV Department of  
 Environmental Protection





# Actual Wellpath Report

Mysis Unit 2H AWP Proj: 14183'

Page 2 of 10



REFERENCE WELLPATH IDENTIFICATION				
Operator	ANTERO RESOURCES CORPORATION		Slot	Slot #02
Area	Tyler County, WV		Well	Mysis Unit 2H
Field	Tyler		Wellbore	Mysis Unit 2H AWB
Facility	Vera Pad			

WELLPATH DATA (175 stations) † = interpolated/extrapolated station																
MD	Inclination	Azimuth	TVD	Vert Sect	North	East	Grid East	Grid North	Latitude	Longitude	Closure Dist	Closure Dir	DLS	Build Rate	Turn Rate	Comments
(ft)	(°)	(°)	(ft)	(ft)	(ft)	(ft)	(US ft)	(US ft)			(ft)	(°)	(°/100ft)	(°/100ft)	(°/100ft)	
0.00	0.00	139.000	0.00	0.00	0.00	0.00	1667494.86	14316845.99	39°25'31.520"N	80°54'14.800"W	0.00	0.000	0.00	0.00	0.00	
24.50	0.00	139.000	24.50	0.00	0.00	0.00	1667494.86	14316845.99	39°25'31.520"N	80°54'14.800"W	0.00	0.000	0.00	0.00	0.00	
109.50	0.540	139.000	109.50	-0.37	-0.30	0.26	1667495.12	14316845.69	39°25'31.517"N	80°54'14.797"W	0.40	139.000	0.64	0.64	163.53	Gyrodata MS Gyro <17-1/2"> (100'-713')
209.50	0.140	152.700	209.50	-0.93	-0.77	0.63	1667495.49	14316845.23	39°25'31.512"N	80°54'14.792"W	0.99	140.673	0.41	-0.40	13.70	
309.50	0.260	99.440	309.50	-1.17	-0.91	0.91	1667495.77	14316845.08	39°25'31.511"N	80°54'14.788"W	1.29	135.140	0.21	0.12	-53.26	
409.50	0.450	144.370	409.49	-1.65	-1.27	1.36	1667496.22	14316844.73	39°25'31.507"N	80°54'14.783"W	1.86	133.002	0.32	0.19	44.93	
509.50	0.800	139.690	509.49	-2.69	-2.12	2.04	1667496.90	14316843.87	39°25'31.499"N	80°54'14.774"W	2.94	136.093	0.35	0.35	-4.68	
609.50	0.670	139.150	609.48	-3.89	-3.09	2.87	1667497.74	14316842.90	39°25'31.489"N	80°54'14.763"W	4.22	137.110	0.13	-0.13	-0.54	
709.50	0.480	140.990	709.48	-4.83	-3.86	3.52	1667498.38	14316842.13	39°25'31.482"N	80°54'14.755"W	5.23	137.649	0.19	-0.19	1.84	
722.50	0.530	139.270	722.47	-4.94	-3.95	3.59	1667498.45	14316842.04	39°25'31.481"N	80°54'14.754"W	5.34	137.701	0.40	0.38	-13.23	
784.50	0.570	195.790	784.47	-5.45	-4.46	3.70	1667498.56	14316841.53	39°25'31.476"N	80°54'14.753"W	5.80	140.367	0.84	0.06	91.16	Gyrodata MS Gyro <12-1/4"> (713')(775'-1404')
814.50	0.980	194.300	814.47	-5.79	-4.86	3.59	1667498.45	14316841.14	39°25'31.472"N	80°54'14.754"W	6.04	143.501	1.37	1.37	-4.97	
844.50	1.360	193.180	844.46	-6.30	-5.45	3.45	1667498.31	14316840.54	39°25'31.466"N	80°54'14.756"W	6.45	147.681	1.27	1.27	-3.73	
877.50	1.880	200.700	877.45	-7.04	-6.34	3.17	1667498.03	14316839.66	39°25'31.457"N	80°54'14.760"W	7.09	153.444	1.70	1.58	22.79	
909.50	2.510	209.790	909.43	-7.89	-7.44	2.63	1667497.50	14316838.56	39°25'31.446"N	80°54'14.767"W	7.89	160.496	2.24	1.97	28.41	
941.50	3.210	212.090	941.39	-8.90	-8.81	1.81	1667496.67	14316837.19	39°25'31.433"N	80°54'14.777"W	8.99	168.381	2.22	2.19	7.19	
1003.50	4.240	219.560	1003.25	-11.14	-12.04	-0.57	1667494.29	14316833.95	39°25'31.401"N	80°54'14.807"W	12.06	182.716	1.83	1.66	12.05	
1066.50	5.810	226.160	1066.01	-13.62	-16.05	-4.35	1667490.51	14316829.95	39°25'31.361"N	80°54'14.856"W	16.63	195.182	2.65	2.49	10.48	
1161.50	6.010	226.060	1160.51	-17.61	-22.83	-11.40	1667483.46	14316823.17	39°25'31.294"N	80°54'14.946"W	25.52	206.543	0.21	0.21	-0.11	
1256.50	2.470	237.070	1255.23	-20.10	-27.40	-16.71	1667478.16	14316818.61	39°25'31.249"N	80°54'15.013"W	32.09	211.374	3.81	-3.73	11.59	
1287.50	1.680	246.600	1286.21	-20.28	-27.94	-17.68	1667477.19	14316818.07	39°25'31.244"N	80°54'15.026"W	33.06	212.331	2.77	-2.55	30.74	
1317.50	1.190	254.730	1316.20	-20.29	-28.20	-18.39	1667476.48	14316817.81	39°25'31.242"N	80°54'15.035"W	33.66	213.110	1.76	-1.63	27.10	
1413.50	0.790	26.410	1412.20	-19.75	-27.87	-19.05	1667475.81	14316818.14	39°25'31.245"N	80°54'15.043"W	33.76	214.365	1.89	-0.42	137.17	
1528.50	0.900	21.000	1527.18	-18.52	-26.31	-18.38	1667476.49	14316819.69	39°25'31.260"N	80°54'15.035"W	32.09	214.933	0.12	0.10	-4.70	WFT EM <12-1/4"> (1404')(1519'-2486')
1624.50	0.590	344.620	1623.18	-17.45	-25.13	-18.24	1667476.63	14316820.87	39°25'31.272"N	80°54'15.033"W	31.05	215.970	0.57	-0.32	-37.90	
1719.50	0.540	301.950	1718.17	-16.61	-24.42	-18.75	1667476.12	14316821.58	39°25'31.279"N	80°54'15.039"W	30.79	217.512	0.44	-0.05	-44.92	
1814.50	0.440	279.270	1813.17	-16.09	-24.13	-19.49	1667475.38	14316821.88	39°25'31.282"N	80°54'15.049"W	31.01	218.929	0.23	-0.11	-23.87	
1908.50	0.190	227.410	1907.17	-15.97	-24.17	-19.96	1667474.91	14316821.83	39°25'31.281"N	80°54'15.055"W	31.35	219.544	0.38	-0.27	-55.17	
2003.50	0.450	120.560	2002.17	-16.32	-24.47	-19.75	1667475.12	14316821.53	39°25'31.278"N	80°54'15.052"W	31.45	218.912	0.57	0.27	-112.47	
2097.50	0.720	107.980	2096.16	-16.97	-24.84	-18.87	1667475.99	14316821.16	39°25'31.275"N	80°54'15.041"W	31.20	217.228	0.32	0.29	-13.38	

RECEIVED  
 Office of Oil and Gas  
 FEB 13 2019  
 WV Department of  
 Environmental Protection





# Actual Wellpath Report

Mysis Unit 2H AWP Proj: 14183'

Page 3 of 10



REFERENCE WELLPATH IDENTIFICATION			
Operator	ANTERO RESOURCES CORPORATION	Slot	Slot #02
Area	Tyler County, WV	Well	Mysis Unit 2H
Field	Tyler	Wellbore	Mysis Unit 2H AWB
Facility	Vera Pad		

WELLPATH DATA (175 stations)																
MD (ft)	Inclination (°)	Azimuth (°)	TVD (ft)	Vert Sect (ft)	North (ft)	East (ft)	Grid East (US ft)	Grid North (US ft)	Latitude	Longitude	Closure Dist (ft)	Closure Dir (°)	DLS (°/100ft)	Build Rate (°/100ft)	Turn Rate (°/100ft)	Comments
2191.50	0.930	98.840	2190.15	-17.69	-25.14	-17.56	1667477.31	14316820.86	39°25'31.272"N	80°54'15.024"W	30.67	214.932	0.26	0.22	-9.72	
2286.50	1.200	85.750	2285.13	-18.33	-25.19	-15.81	1667479.06	14316820.82	39°25'31.271"N	80°54'15.002"W	29.73	212.111	0.38	0.28	-13.78	
2381.50	1.360	86.680	2380.11	-18.92	-25.05	-13.69	1667481.18	14316820.96	39°25'31.273"N	80°54'14.975"W	28.54	208.656	0.17	0.17	0.98	
2476.50	0.760	119.260	2475.09	-19.71	-25.29	-12.01	1667482.85	14316820.71	39°25'31.270"N	80°54'14.953"W	28.00	205.408	0.87	-0.63	34.29	
2495.50	0.670	116.700	2494.09	-19.89	-25.40	-11.80	1667483.06	14316820.60	39°25'31.269"N	80°54'14.951"W	28.01	204.924	0.50	-0.47	-13.47	
2605.50	0.700	127.020	2604.09	-20.92	-26.09	-10.69	1667484.17	14316819.91	39°25'31.262"N	80°54'14.937"W	28.20	202.282	0.12	0.03	9.38	WFT EM <8-3/4"> (2486')(2596'-5906')
2700.50	2.010	209.540	2699.06	-22.49	-27.89	-11.05	1667483.82	14316818.11	39°25'31.244"N	80°54'14.941"W	30.00	201.612	2.15	1.38	86.86	
2794.50	4.390	218.240	2792.91	-25.47	-32.15	-14.09	1667480.78	14316813.85	39°25'31.202"N	80°54'14.980"W	35.11	203.664	2.58	2.53	9.26	
2889.50	6.740	217.400	2887.46	-30.41	-39.44	-19.73	1667475.14	14316806.57	39°25'31.130"N	80°54'15.052"W	44.10	206.574	2.48	2.47	-0.88	
2983.50	8.760	219.190	2980.59	-37.08	-49.37	-27.60	1667467.27	14316796.64	39°25'31.032"N	80°54'15.152"W	56.56	209.209	2.16	2.15	1.90	
3078.50	9.970	223.780	3074.33	-44.46	-60.91	-37.86	1667457.01	14316785.10	39°25'30.918"N	80°54'15.283"W	71.72	211.864	1.50	1.27	4.83	
3173.50	9.890	233.580	3167.91	-50.44	-71.70	-50.12	1667444.76	14316774.33	39°25'30.812"N	80°54'15.440"W	87.48	214.955	1.78	-0.08	10.32	
3268.50	9.450	232.010	3261.56	-55.20	-81.34	-62.83	1667432.06	14316764.69	39°25'30.717"N	80°54'15.602"W	102.78	217.684	0.54	-0.46	-1.65	
3362.50	9.710	229.520	3354.25	-60.40	-91.24	-74.94	1667419.95	14316754.79	39°25'30.619"N	80°54'15.756"W	118.07	219.400	0.52	0.28	-2.65	
3457.50	12.830	225.470	3447.41	-67.64	-103.84	-88.56	1667406.34	14316742.20	39°25'30.495"N	80°54'15.930"W	136.47	220.459	3.39	3.28	-4.26	
3552.50	12.620	235.490	3540.08	-74.68	-117.12	-104.63	1667390.27	14316728.92	39°25'30.364"N	80°54'16.135"W	157.05	221.778	2.33	-0.22	10.55	
3646.50	11.520	232.950	3632.01	-80.06	-128.59	-120.59	1667374.32	14316717.46	39°25'30.250"N	80°54'16.338"W	176.28	223.160	1.30	-1.17	-2.70	
3740.50	10.650	230.130	3724.25	-85.81	-139.81	-134.74	1667360.17	14316706.24	39°25'30.140"N	80°54'16.519"W	194.17	223.942	1.09	-0.93	-3.00	
3834.50	9.730	228.850	3816.77	-91.68	-150.61	-147.39	1667347.53	14316695.44	39°25'30.033"N	80°54'16.680"W	210.73	224.381	1.01	-0.98	-1.36	
3929.50	10.450	233.130	3910.30	-97.12	-161.06	-160.33	1667334.60	14316685.00	39°25'29.930"N	80°54'16.845"W	227.26	224.870	1.09	0.76	4.51	
4024.50	9.520	232.120	4003.86	-102.08	-171.05	-173.42	1667321.51	14316675.01	39°25'29.831"N	80°54'17.012"W	243.59	225.394	1.00	-0.98	-1.06	
4118.50	10.120	232.180	4096.48	-107.04	-180.89	-186.08	1667308.85	14316665.17	39°25'29.734"N	80°54'17.174"W	259.52	225.810	0.64	0.64	0.06	
4213.50	11.140	228.780	4189.85	-112.97	-192.06	-199.58	1667295.36	14316654.01	39°25'29.624"N	80°54'17.346"W	276.98	226.100	1.26	1.07	-3.58	
4308.50	12.720	224.490	4282.80	-120.85	-205.57	-213.81	1667281.14	14316640.51	39°25'29.491"N	80°54'17.527"W	296.60	226.126	1.91	1.66	-4.52	
4402.50	12.010	222.100	4374.62	-129.93	-220.21	-227.62	1667267.33	14316625.88	39°25'29.346"N	80°54'17.704"W	316.71	225.949	0.93	-0.76	-2.54	
4497.50	12.790	224.490	4467.40	-139.14	-235.04	-241.62	1667253.34	14316611.05	39°25'29.199"N	80°54'17.882"W	337.08	225.790	0.98	0.82	2.52	
4591.50	12.540	229.730	4559.12	-147.21	-249.06	-256.70	1667238.27	14316597.03	39°25'29.061"N	80°54'18.074"W	357.66	225.865	1.25	-0.27	5.57	
4686.50	12.000	225.960	4651.95	-154.86	-262.59	-271.66	1667223.31	14316583.51	39°25'28.928"N	80°54'18.265"W	377.83	225.973	1.02	-0.57	-3.97	
4780.50	11.510	223.980	4743.98	-163.01	-276.13	-285.20	1667209.77	14316569.97	39°25'28.794"N	80°54'18.438"W	396.98	225.925	0.68	-0.52	-2.11	
4875.50	11.390	227.030	4837.09	-170.88	-289.35	-298.65	1667196.33	14316556.76	39°25'28.663"N	80°54'18.610"W	415.83	225.906	0.65	-0.13	3.21	

RECEIVED  
 Office of Oil and Gas  
 FEB 13 2019  
 WV Department of  
 Environmental Protection





# Actual Wellpath Report

Mysis Unit 2H AWP Proj: 14183'

Page 4 of 10



REFERENCE WELLPATH IDENTIFICATION			
Operator	ANTERO RESOURCES CORPORATION	Slot	Slot #02
Area	Tyler County, WV	Well	Mysis Unit 2H
Field	Tyler	Wellbore	Mysis Unit 2H AWB
Facility	Vera Pad		

WELLPATH DATA (175 stations) † = interpolated/extrapolated station																
MD (ft)	Inclination (°)	Azimuth (°)	TVD (ft)	Vert Sect (ft)	North (ft)	East (ft)	Grid East (US ft)	Grid North (US ft)	Latitude	Longitude	Closure Dist (ft)	Closure Dir (°)	DLS (°/100ft)	Build Rate (°/100ft)	Turn Rate (°/100ft)	Comments
4969.50	10.910	225.210	4929.31	-178.28	-301.94	-311.75	1667183.23	14316544.17	39°25'28.539"N	80°54'18.777"W	434.00	225.916	0.63	-0.51	-1.94	
5064.50	10.500	222.290	5022.66	-186.12	-314.68	-323.96	1667171.03	14316531.44	39°25'28.413"N	80°54'18.932"W	451.63	225.832	0.72	-0.43	-3.07	
5159.50	11.790	222.730	5115.87	-194.64	-328.21	-336.37	1667158.63	14316517.91	39°25'28.280"N	80°54'19.091"W	469.96	225.703	1.36	1.36	0.46	
5254.50	12.510	229.460	5208.74	-202.76	-342.03	-350.77	1667144.23	14316504.10	39°25'28.143"N	80°54'19.275"W	489.93	225.723	1.67	0.76	7.08	
5348.50	13.080	228.400	5300.41	-210.30	-355.71	-366.46	1667128.54	14316490.43	39°25'28.008"N	80°54'19.475"W	510.71	225.853	0.66	0.61	-1.13	
5443.50	11.970	224.530	5393.15	-218.55	-369.87	-381.41	1667113.60	14316476.27	39°25'27.868"N	80°54'19.665"W	531.30	225.880	1.46	-1.17	-4.07	
5537.50	10.010	224.230	5485.42	-226.34	-382.67	-393.95	1667101.07	14316463.47	39°25'27.742"N	80°54'19.825"W	549.21	225.832	2.09	-2.09	-0.32	
5632.50	9.920	231.170	5578.99	-232.62	-393.72	-406.08	1667088.94	14316452.43	39°25'27.633"N	80°54'19.980"W	565.61	225.885	1.27	-0.09	7.31	
5726.50	9.690	228.070	5671.62	-238.23	-404.09	-418.28	1667076.75	14316442.07	39°25'27.531"N	80°54'20.136"W	581.58	225.989	0.61	-0.24	-3.30	
5821.50	10.630	224.730	5765.13	-245.00	-415.65	-430.39	1667064.64	14316430.51	39°25'27.416"N	80°54'20.290"W	598.33	225.998	1.17	0.99	-3.52	
5915.50	10.860	224.470	5857.48	-252.57	-428.13	-442.70	1667052.34	14316418.03	39°25'27.293"N	80°54'20.447"W	615.85	225.958	0.25	0.24	-0.28	
5985.00	11.720	244.290	5925.66	-256.13	-435.87	-453.65	1667041.40	14316410.30	39°25'27.217"N	80°54'20.587"W	629.11	226.145	5.69	1.24	28.52	BHI AT Curve <8-1/2"> (5915.5')(5985'-14150')
6003.00	12.050	248.570	5943.27	-256.37	-437.35	-457.04	1667038.00	14316408.82	39°25'27.202"N	80°54'20.630"W	632.58	226.261	5.23	1.83	23.78	
6050.00	12.630	267.520	5989.21	-254.98	-439.36	-466.75	1667028.30	14316406.81	39°25'27.182"N	80°54'20.754"W	641.01	226.731	8.67	1.23	40.32	
6098.00	14.560	289.730	6035.89	-249.56	-437.55	-477.68	1667017.38	14316408.62	39°25'27.200"N	80°54'20.893"W	647.79	227.510	11.51	4.02	46.27	
6145.00	17.500	305.880	6081.08	-239.96	-431.41	-488.97	1667006.09	14316414.75	39°25'27.261"N	80°54'21.037"W	652.08	228.579	11.31	6.26	34.36	
6192.00	20.240	316.200	6125.56	-226.68	-421.40	-500.33	1666994.73	14316424.76	39°25'27.360"N	80°54'21.181"W	654.15	229.895	9.17	5.83	21.96	
6239.00	23.520	322.250	6169.18	-210.33	-408.11	-511.70	1666983.36	14316438.05	39°25'27.492"N	80°54'21.326"W	654.52	231.426	8.46	6.98	12.87	
6286.00	25.870	329.190	6211.89	-191.33	-391.88	-522.70	1666972.37	14316454.27	39°25'27.652"N	80°54'21.466"W	653.29	233.140	7.93	5.00	14.77	
6333.00	29.500	334.040	6253.50	-169.75	-372.66	-533.02	1666962.05	14316473.48	39°25'27.842"N	80°54'21.597"W	650.38	235.041	9.08	7.72	10.32	
6381.00	33.770	338.140	6294.37	-144.65	-349.64	-543.17	1666951.91	14316496.49	39°25'28.070"N	80°54'21.726"W	645.97	237.230	9.96	8.90	8.54	
6428.00	37.620	339.870	6332.53	-117.24	-324.04	-552.97	1666942.11	14316522.08	39°25'28.323"N	80°54'21.851"W	640.92	239.630	8.47	8.19	3.68	
6477.00	41.980	339.480	6370.17	-85.88	-294.64	-563.87	1666931.22	14316551.48	39°25'28.614"N	80°54'21.989"W	636.21	242.412	8.91	8.90	-0.80	
6524.00	46.840	337.910	6403.73	-53.02	-264.01	-575.83	1666919.26	14316582.09	39°25'28.917"N	80°54'22.141"W	633.47	245.369	10.60	10.34	-3.34	
6530.00†	47.501	337.777	6407.81	-48.62	-259.94	-577.49	1666917.60	14316586.16	39°25'28.957"N	80°54'22.163"W	633.30	245.767	11.13	11.01	-2.21	Middlesex: 6530' MD
6571.00	52.020	336.940	6434.29	-17.37	-231.06	-589.55	1666905.55	14316615.02	39°25'29.242"N	80°54'22.316"W	633.21	248.598	11.13	11.02	-2.04	
6618.00	55.780	336.700	6461.98	20.53	-196.16	-604.49	1666890.61	14316649.91	39°25'29.588"N	80°54'22.506"W	635.52	252.022	8.01	8.00	-0.51	
6666.00	59.900	335.820	6487.52	61.07	-158.97	-620.85	1666874.26	14316687.08	39°25'29.955"N	80°54'22.714"W	640.88	255.638	8.72	8.58	-1.83	
6691.00†	61.681	335.431	6499.72	82.82	-139.10	-629.86	1666865.25	14316706.95	39°25'30.152"N	80°54'22.828"W	645.04	257.547	7.25	7.13	-1.55	Burkett: 6691' MD
6713.00	63.250	335.100	6509.89	102.25	-121.38	-638.02	1666857.09	14316724.66	39°25'30.327"N	80°54'22.932"W	649.47	259.228	7.25	7.13	-1.51	

RECEIVED  
 Office of Oil and Gas  
 FEB 13 2019  
 WV Department of  
 Environmental Protection





# Actual Wellpath Report

Mysis Unit 2H AWP Proj: 14183

Page 5 of 10



REFERENCE WELLPATH IDENTIFICATION	
Operator	ANTERO RESOURCES CORPORATION
Area	Tyler County, WV
Field	Tyler
Facility	Vera Pad
Slot	Slot #02
Well	Mysis Unit 2H
Wellbore	Mysis Unit 2H AWB

WELLPATH DATA (175 stations) † = interpolated/extrapolated station																
MD (ft)	Inclination (°)	Azimuth (°)	TVD (ft)	Vert Sect (ft)	North (ft)	East (ft)	Grid East (ft)	Grid North (ft)	Latitude	Longitude	Closure Dist (ft)	Closure Dir (°)	DLS (F/100ft)	Build Rate (F/100ft)	Turn Rate (F/100ft)	Comments
6751.00†	65.555	335.025	6526.31	136.38	-90.31	-652.47	1666842.65	14316755.72	39°25'30.634"N	80°54'23.116"W	658.69	262.120	6.07	6.07	-0.20	Tully: 6751 MD
6759.00	66.040	335.010	6529.59	143.65	-83.69	-655.55	1666839.57	14316762.33	39°25'30.700"N	80°54'23.155"W	660.87	262.724	6.07	6.07	-0.19	
6806.00	69.070	336.480	6547.53	186.96	-44.09	-673.39	1666821.74	14316801.92	39°25'31.091"N	80°54'23.382"W	674.83	266.254	7.07	6.45	3.13	
6827.00†	71.407	337.490	6554.63	206.69	-25.90	-681.11	1666814.02	14316820.10	39°25'31.271"N	80°54'23.480"W	681.61	267.822	12.02	11.13	4.81	Marcellus POE: 6827 MD
6854.00	74.420	338.750	6562.56	232.48	-1.96	-690.73	1666804.41	14316844.04	39°25'31.508"N	80°54'23.602"W	690.73	269.838	12.02	11.16	4.66	
6901.00	80.100	340.380	6572.92	278.30	40.98	-706.72	1666788.42	14316868.96	39°25'31.932"N	80°54'23.805"W	707.91	273.319	12.55	12.09	3.47	
6949.00	85.870	341.190	6578.78	325.91	85.95	-722.39	1666772.76	14316893.91	39°25'32.377"N	80°54'24.004"W	727.49	276.785	12.14	12.02	1.69	
6987.00	89.910	341.500	6580.18	363.87	121.92	-734.54	1666760.62	14316967.87	39°25'32.733"N	80°54'24.159"W	744.59	279.424	10.66	10.63	0.82	
7044.00	89.940	341.750	6580.26	420.85	176.02	-752.50	1666742.66	14317021.94	39°25'33.267"N	80°54'24.387"W	772.82	283.165	0.44	0.05	0.44	
7140.00	90.000	341.010	6580.31	516.83	266.99	-783.16	1666712.02	14317112.88	39°25'34.167"N	80°54'24.776"W	827.42	288.825	0.77	0.06	-0.77	
7235.00	90.310	340.190	6580.05	611.83	356.60	-814.71	1666680.48	14317202.45	39°25'35.063"N	80°54'25.177"W	889.33	293.639	0.92	0.33	-0.86	
7330.00	88.920	340.640	6580.69	706.82	446.10	-846.55	1666648.65	14317291.91	39°25'35.938"N	80°54'25.582"W	956.90	297.787	1.54	-1.46	0.47	
7424.00	89.630	340.320	6581.88	800.81	534.69	-877.96	1666617.25	14317380.47	39°25'36.814"N	80°54'25.981"W	1027.96	301.342	0.83	0.76	-0.34	
7519.00	88.310	339.480	6583.59	895.79	623.88	-910.60	1666584.63	14317469.63	39°25'37.696"N	80°54'26.396"W	1103.82	304.416	1.65	-1.39	-0.88	
7614.00	88.460	339.960	6586.26	990.75	712.96	-943.51	1666551.73	14317558.67	39°25'38.576"N	80°54'26.814"W	1182.59	307.076	0.53	0.16	0.51	
7709.00	88.460	340.050	6588.82	1085.72	802.20	-975.99	1666519.27	14317647.87	39°25'39.459"N	80°54'27.227"W	1263.36	309.418	0.09	0.00	0.09	
7804.00	89.450	340.390	6590.55	1180.70	891.58	-1008.13	1666487.14	14317737.21	39°25'40.342"N	80°54'27.635"W	1345.82	311.489	1.10	1.04	0.36	
7899.00	89.570	339.730	6591.36	1275.70	980.88	-1040.53	1666454.75	14317826.48	39°25'41.225"N	80°54'28.047"W	1429.97	313.310	0.71	0.13	-0.69	
7984.00	90.150	340.240	6591.59	1370.69	1070.14	-1073.04	1666422.25	14317915.71	39°25'42.108"N	80°54'28.460"W	1515.46	314.922	0.81	0.61	0.54	
8086.00	90.680	344.610	6590.93	1462.60	1157.82	-1100.81	1666394.49	14318003.35	39°25'42.975"N	80°54'28.813"W	1597.61	316.446	4.78	0.58	4.75	
8182.00	90.520	342.820	6589.92	1558.40	1249.96	-1127.73	1666367.58	14318089.45	39°25'43.886"N	80°54'29.155"W	1683.50	317.943	1.87	-0.17	-1.86	
8276.00	90.550	335.870	6589.04	1652.33	1337.86	-1160.87	1666334.46	14318183.32	39°25'44.755"N	80°54'29.576"W	1771.30	319.052	7.39	0.03	-7.39	
8371.00	90.400	337.460	6588.26	1747.15	1425.09	-1198.50	1666296.85	14318270.51	39°25'45.617"N	80°54'30.054"W	1862.06	319.936	1.68	-0.16	1.67	
8466.00	90.310	339.520	6587.67	1842.10	1513.46	-1233.33	1666262.03	14318358.85	39°25'46.491"N	80°54'30.497"W	1952.35	320.823	2.17	-0.09	2.17	
8562.00	90.060	340.230	6587.36	1938.10	1603.60	-1266.36	1666229.01	14318448.95	39°25'47.382"N	80°54'30.917"W	2043.33	321.702	0.78	-0.26	0.74	
8657.00	90.830	338.630	6586.62	2033.08	1692.54	-1299.73	1666195.65	14318537.85	39°25'48.261"N	80°54'31.341"W	2134.01	322.479	1.87	0.81	-1.68	
8751.00	90.650	334.170	6585.40	2126.85	1778.65	-1337.35	1666158.05	14318623.93	39°25'49.113"N	80°54'31.819"W	2225.33	323.061	4.75	-0.19	-4.74	
8846.00	90.550	334.220	6584.41	2221.33	1864.17	-1378.70	1666116.71	14318709.41	39°25'49.959"N	80°54'32.345"W	2318.61	323.514	0.12	-0.11	0.05	
8941.00	90.580	340.550	6583.47	2316.16	1951.81	-1415.22	1666080.21	14318797.03	39°25'50.825"N	80°54'32.809"W	2410.90	324.055	6.66	0.03	6.66	
9035.00	90.710	338.340	6582.41	2410.14	2039.82	-1448.21	1666047.23	14318884.99	39°25'51.695"N	80°54'33.229"W	2501.64	324.626	2.35	0.14	-2.35	

RECEIVED  
Office of Oil and Gas

FEB 13 2019

WV Department of  
Environmental Protection





# Actual Wellpath Report

Mysis Unit 2H AWP Proj: 14183



Operator	Area	Field	Facility
ANTERO RESOURCES CORPORATION	Tyler County, WV	Tyler	Vera Pad
Slot	Well	Wellbore	
Slot #02	Mysis Unit 2H	Mysis Unit 2H AWP	

## REFERENCE WELLPATH IDENTIFICATION

MD	Inclination	Azimuth	TVD	Vert Sect	North	East	Grid East	Grid North	Latitude	Longitude	Closure Dist	Closure Dir	DLS	Build Rate	Turn Rate	Comments
[ft]	[°]	[°]	[ft]	[ft]	[ft]	[ft]	[ft]	[ft]	[ft]	[ft]	[ft]	[ft]	[ft]	[ft/100ft]	[ft/100ft]	[ft/100ft]
9129.00	337.410	6580.97	2504.06	2126.89	-1483.61	-1483.61	14318972.03	39.2552.556N	39.2552.556N	80.5433.679W	2593.21	325.102	1.05	0.36	-0.99	
9223.00	340.710	6579.60	2598.01	2214.66	-1517.20	-1517.20	14319059.76	39.2553.424N	39.2553.424N	80.5434.106W	2684.51	325.586	3.54	-0.46	3.51	
9317.00	343.600	6578.51	2691.94	2304.12	-1546.00	-1546.00	14319149.19	39.2554.308N	39.2554.308N	80.5434.471W	2774.72	326.139	3.08	0.10	3.07	
9413.00	346.130	6577.29	2787.67	2396.56	-1571.87	-1571.87	14319241.59	39.2555.222N	39.2555.222N	80.5434.800W	2866.05	326.740	1.59	0.03	1.59	
9508.00	343.390	6576.07	2882.42	2487.98	-1597.64	-1597.64	14319332.98	39.2556.126N	39.2556.126N	80.5435.127W	2956.77	327.294	1.83	0.00	-1.83	
9603.00	340.880	6574.89	2977.35	2578.39	-1626.78	-1626.78	14319423.35	39.2557.020N	39.2557.020N	80.5435.497W	3048.69	327.751	2.64	-0.06	-2.64	
9698.00	339.500	6573.71	3072.34	2667.76	-1658.97	-1658.97	14319512.68	39.2557.904N	39.2557.904N	80.5435.907W	3141.51	328.124	1.45	0.06	-1.45	
9793.00	340.990	6572.39	3167.33	2757.15	-1691.08	-1691.08	14319602.04	39.2558.787N	39.2558.787N	80.5436.315W	3234.45	328.478	1.57	0.13	1.57	
9888.00	340.300	6571.01	3262.31	2846.78	-1722.56	-1722.56	14319691.63	39.2559.674N	39.2559.674N	80.5436.715W	3327.36	328.822	0.73	-0.06	-0.73	
9983.00	339.180	6569.87	3357.30	2935.89	-1755.45	-1755.45	14319780.71	39.2600.555N	39.2600.555N	80.5437.133W	3420.68	329.124	1.20	-0.23	-1.18	
10078.00	337.190	6568.70	3452.23	3024.08	-1790.75	-1790.75	14319868.86	39.2601.427N	39.2601.427N	80.5437.582W	3514.52	329.368	2.11	0.26	-2.09	
10173.00	336.890	6567.49	3547.09	3111.54	-1827.80	-1827.80	14319956.29	39.2602.291N	39.2602.291N	80.5438.053W	3608.68	329.569	0.39	-0.22	-0.32	
10267.00	341.070	6566.38	3641.04	3199.26	-1861.51	-1861.51	14320043.97	39.2603.159N	39.2603.159N	80.5438.481W	3701.42	329.807	4.45	0.13	4.45	
10362.00	342.820	6565.38	3735.98	3289.58	-1890.95	-1890.95	14320134.25	39.2604.052N	39.2604.052N	80.5438.855W	3794.34	330.108	1.87	-0.29	1.84	
10456.00	340.900	6564.73	3829.94	3378.90	-1920.22	-1920.22	14320223.54	39.2604.935N	39.2604.935N	80.5439.227W	3886.41	330.391	2.05	-0.13	-2.04	
10551.00	341.960	6564.21	3924.91	3468.95	-1950.47	-1950.47	14320313.55	39.2605.825N	39.2605.825N	80.5439.611W	3979.69	330.652	1.12	-0.06	1.12	
10645.00	345.430	6563.75	4018.72	3559.15	-1976.86	-1976.86	14320403.72	39.2606.717N	39.2606.717N	80.5439.947W	4071.31	330.951	3.69	0.00	3.69	
10740.00	347.190	6563.14	4113.17	3651.45	-1999.34	-1999.34	14320495.98	39.2607.629N	39.2607.629N	80.5440.232W	4162.98	331.297	1.86	0.19	1.85	
10834.00	343.720	6562.43	4206.75	3742.42	-2022.94	-2022.94	14320586.91	39.2608.529N	39.2608.529N	80.5440.532W	4254.17	331.607	3.69	-0.06	-3.69	
10929.00	340.910	6561.85	4301.67	3832.92	-2051.80	-2051.80	14320677.37	39.2609.423N	39.2609.423N	80.5440.898W	4347.54	331.839	2.96	-0.09	-2.96	
11024.00	339.290	6561.33	4396.67	3922.24	-2084.13	-2084.13	14320766.66	39.2610.306N	39.2610.306N	80.5441.309W	4441.57	332.016	1.71	0.00	-1.71	
11119.00	338.390	6560.79	4491.64	4010.83	-2118.42	-2118.42	14320855.22	39.2611.182N	39.2611.182N	80.5441.745W	4535.91	332.158	0.95	0.03	-0.95	
11213.00	338.370	6560.26	4585.59	4098.22	-2153.06	-2153.06	14320942.57	39.2612.046N	39.2612.046N	80.5442.186W	4629.37	332.284	0.04	-0.03	-0.02	
11308.00	338.840	6559.75	4680.55	4186.67	-2187.71	-2187.71	14321030.99	39.2612.921N	39.2612.921N	80.5442.626W	4723.80	332.411	0.49	0.00	0.49	
11403.00	339.310	6559.23	4775.53	4275.40	-2221.64	-2221.64	14321119.68	39.2613.798N	39.2613.798N	80.5443.057W	4818.17	332.542	0.49	0.00	0.49	
11498.00	339.110	6558.74	4870.52	4364.22	-2255.36	-2255.36	14321208.46	39.2614.676N	39.2614.676N	80.5443.486W	4912.54	332.671	0.21	-0.03	-0.21	
11593.00	337.570	6558.23	4965.47	4452.51	-2290.42	-2290.42	14321296.71	39.2615.549N	39.2615.549N	80.5443.932W	5007.08	332.778	1.62	0.06	-1.62	
11688.00	339.240	6557.74	5060.42	4540.83	-2325.38	-2325.38	14321385.01	39.2616.423N	39.2616.423N	80.5444.376W	5101.62	332.883	1.76	-0.09	1.76	
11784.00	340.640	6557.29	5156.41	4631.01	-2358.31	-2358.31	14321475.14	39.2617.314N	39.2617.314N	80.5444.795W	5196.91	333.013	1.46	0.03	1.46	
11878.00	340.470	6556.76	5250.41	4719.64	-2389.60	-2389.60	14321563.74	39.2618.190N	39.2618.190N	80.5445.193W	5290.11	333.145	0.20	0.10	-0.18	

RECEIVED  
Office of Oil and Gas  
FEB 13 2019  
WV Department of  
Environmental Protection





# Actual Wellpath Report

Mysis Unit 2H AWP Proj: 14183

Page 7 of 10



Operator	Area	Field	Facility
ANTERO RESOURCES CORPORATION	Tyler County, WV	Tyler	Vera Pad
		Well	Mysis Unit 2H
		Wellbore	Mysis Unit 2H AWB
		Slot	Slot #02

## REFERENCE WELLPATH IDENTIFICATION

MD	Inclination	Azimuth	TVD	Vert Sect	North	East	Grid East	Grid North	Latitude	Longitude	Closure Dist	Closure Dir	DLS	Build Rate	Turn Rate	Comments
11973.00	90.370	340.320	6556.15	5345.41	4809.13	-2421.48	1665074.35	14321653.20	39°26'19.075"N	80°54'45.598"W	5384.36	333.274	0.16	0.00	-0.16	
12068.00	90.310	340.090	6555.58	5440.41	4898.52	-2453.65	1665042.20	14321742.55	39°26'19.959"N	80°54'46.007"W	5478.68	333.394	0.25	-0.06	-0.24	
12163.00	90.310	338.930	6555.07	5535.40	4987.51	-2486.90	1665008.96	14321831.50	39°26'20.839"N	80°54'46.430"W	5573.14	333.498	1.22	0.00	-1.22	
12257.00	90.250	338.230	6554.61	5629.36	5075.01	-2521.23	1664974.64	14321918.97	39°26'21.704"N	80°54'46.866"W	5666.78	333.582	0.75	-0.06	-0.74	
12352.00	90.220	340.300	6554.22	5724.34	5163.85	-2554.86	1664941.02	14322007.77	39°26'22.582"N	80°54'47.294"W	5761.31	333.676	2.18	-0.03	2.18	
12446.00	90.310	341.320	6553.79	5818.33	5252.63	-2585.76	1664910.14	14322096.51	39°26'23.460"N	80°54'47.686"W	5854.59	333.790	1.09	0.10	1.09	
12541.00	90.400	340.210	6553.20	5913.32	5342.32	-2617.06	1664878.85	14322186.17	39°26'24.347"N	80°54'48.084"W	5948.90	333.901	1.17	0.09	-1.17	
12635.00	90.280	339.310	6552.64	6007.32	5430.59	-2649.38	1664846.55	14322274.40	39°26'25.220"N	80°54'48.495"W	6042.39	333.994	0.69	-0.13	-0.68	
12730.00	90.340	339.310	6552.13	6102.31	5519.54	-2682.74	1664813.20	14322363.31	39°26'26.099"N	80°54'48.919"W	6136.97	334.078	0.28	0.06	-0.27	
12825.00	90.280	339.720	6551.61	6197.30	5608.53	-2715.98	1664779.97	14322452.27	39°26'26.979"N	80°54'49.342"W	6231.54	334.161	0.44	-0.06	0.43	
12920.00	90.310	339.080	6551.12	6292.29	5697.45	-2749.41	1664746.56	14322541.16	39°26'27.858"N	80°54'49.767"W	6326.15	334.240	0.67	0.03	-0.67	
13014.00	90.340	338.830	6550.59	6386.27	5785.18	-2783.16	1664712.81	14322628.85	39°26'28.725"N	80°54'50.196"W	6419.84	334.308	0.27	0.00	-0.27	
13109.00	90.340	337.600	6550.03	6481.21	5873.39	-2818.42	1664677.57	14322717.03	39°26'29.598"N	80°54'50.644"W	6514.61	334.365	1.29	0.00	-1.29	
13204.00	90.280	337.640	6549.51	6576.12	5961.23	-2854.59	1664641.42	14322804.84	39°26'30.466"N	80°54'51.104"W	6609.46	334.412	0.08	-0.06	0.04	
13299.00	90.150	337.970	6549.16	6671.03	6049.19	-2890.48	1664605.54	14322892.76	39°26'31.336"N	80°54'51.561"W	6704.30	334.460	0.37	-0.14	0.35	
13394.00	90.310	340.190	6548.77	6766.01	6137.93	-2924.39	1664571.64	14322981.46	39°26'32.213"N	80°54'51.992"W	6798.99	334.525	2.34	0.17	2.34	
13489.00	90.370	343.070	6548.21	6860.97	6228.07	-2954.33	1664541.72	14323071.57	39°26'33.104"N	80°54'52.372"W	6893.26	334.622	3.03	0.06	3.03	
13583.00	90.950	344.310	6547.13	6954.78	6318.28	-2980.73	1664515.33	14323161.74	39°26'33.996"N	80°54'52.708"W	6986.09	334.744	1.46	0.62	1.32	
13678.00	90.430	345.610	6545.98	7049.44	6410.02	-3005.38	1664490.69	14323253.44	39°26'34.903"N	80°54'53.021"W	7079.59	334.880	1.47	-0.55	1.37	
13773.00	90.430	343.650	6545.27	7144.15	6501.61	-3030.55	1664465.52	14323345.00	39°26'35.809"N	80°54'53.341"W	7173.23	335.009	2.06	0.00	-2.06	
13867.00	90.490	343.290	6544.52	7237.99	6591.73	-3057.30	1664438.79	14323435.08	39°26'36.699"N	80°54'53.680"W	7266.22	335.118	0.39	0.06	-0.38	
13961.00	90.620	342.190	6543.61	7331.89	6681.49	-3085.19	1664410.91	14323524.80	39°26'37.587"N	80°54'54.035"W	7359.39	335.215	1.18	0.14	-1.17	
14056.00	90.550	338.430	6542.65	7425.86	6769.97	-3116.85	1664379.26	14323613.25	39°26'38.462"N	80°54'54.437"W	7453.00	335.279	4.00	-0.07	-4.00	
14150.00	90.580	336.210	6541.71	7520.74	6857.62	-3153.48	1664342.65	14323700.86	39°26'39.328"N	80°54'54.903"W	7547.93	335.305	2.34	0.03	-2.34	
14183.00	90.580	336.210	6541.37	7553.66	6887.81	-3166.79	1664329.34	14323731.04	39°26'39.627"N	80°54'55.072"W	7580.93	335.309	0.00	0.00	0.00	Projected MD at TD: 14183'

RECEIVED  
Office of Oil and Gas  
FEB 13 2019  
WV Department of  
Environmental Protection





# Actual Wellpath Report

Mysis Unit 2H AWP Proj: 14183'

Page 8 of 10



## REFERENCE WELLPATH IDENTIFICATION

Operator	ANTERO RESOURCES CORPORATION	Slot	Slot #02
Area	Tyler County, WV	Well	Mysis Unit 2H
Field	Tyler	Wellbore	Mysis Unit 2H AWB
Facility	Vera Pad		

## HOLE & CASING SECTIONS - Ref Wellbore: Mysis Unit 2H AWB Ref Wellpath: Mysis Unit 2H AWP Proj: 14183'

String/Diameter	Start MD [ft]	End MD [ft]	Interval [ft]	Start TVD [ft]	End TVD [ft]	Start N/S [ft]	Start E/W [ft]	End N/S [ft]	End E/W [ft]
20in Conductor	24.50	104.50	80.00	24.50	104.50	0.00	0.00	-0.27	0.23
17.5in Open Hole	104.50	749.70	645.20	104.50	749.67	-0.27	0.23	-4.16	3.71
13.375in Casing Surface	24.50	749.70	725.20	24.50	749.67	0.00	0.00	-4.16	3.71
12.25in Open Hole	749.70	2577.30	1827.60	749.67	2575.89	-4.16	3.71	-25.89	-10.97
9.625in Casing Intermediate	24.50	2577.30	2552.80	24.50	2575.89	0.00	0.00	-25.89	-10.97
8.75in Open Hole	2577.30	5985.50	3408.20	2575.89	5926.15	-25.89	-10.97	-435.91	-453.74
8.5in Open Hole	5985.50	14183.00	8197.50	5926.15	6541.37	-435.91	-453.74	6887.81	-3166.79
5.5in Casing Production	24.50	14183.00	14158.50	24.50	6541.37	0.00	0.00	6887.81	-3166.79

## TARGETS

Name	TVD [ft]	North [ft]	East [ft]	Grid East [US ft]	Grid North [US ft]	Latitude	Longitude	Shape
Mysis Unit 2H POE Rev-2	6555.00	-53.56	-673.82	1666821.31	14316792.46	39°25'30.998"N	80°54'23.387"W	point
Mysis Unit 2H BHL Rev-2	6581.00	6898.52	-3181.17	1664314.97	14323741.75	39°26'39.733"N	80°54'55.256"W	point
Mysis Unit 2H LP Rev-1	6581.00	92.64	-726.55	1666768.61	14316938.59	39°25'32.443"N	80°54'24.057"W	point

RECEIVED  
 Office of Oil and Gas  
 FEB 13 2019  
 WV Department of  
 Environmental Protection





# Actual Wellpath Report

Mysis Unit 2H AWP Proj: 14183'

Page 9 of 10



REFERENCE WELLPATH IDENTIFICATION			
Operator	ANTERO RESOURCES CORPORATION	Slot	Slot #02
Area	Tyler County, WV	Well	Mysis Unit 2H
Field	Tyler	Wellbore	Mysis Unit 2H AWB
Facility	Vera Pad		

WELLPATH COMPOSITION - Ref Wellbore: Mysis Unit 2H AWB Ref Wellpath: Mysis Unit 2H AWP Proj: 14183'				
Start MD [ft]	End MD [ft]	Positional Uncertainty Model	Log Name/Comment	Wellbore
24.50	722.50	Gyrodatta standard - Drop gyro or Multi-shot	01 Gyrodatta MS Gyro <17-1/2">(100'-713')	Mysis Unit 2H AWB
722.50	1413.50	Gyrodatta standard - Drop gyro or Multi-shot	02 Gyrodatta MS Gyro <12-1/4">(713')(775'-1404')	Mysis Unit 2H AWB
1413.50	2495.50	ISCWSA MWD, Rev. 4 (Standard)	03 WFT EM <12-1/4">(1404')(1519'-2486')	Mysis Unit 2H AWB
2495.50	5915.50	ISCWSA MWD, Rev. 4 (Standard)	04 WFT EM <8-3/4">(2486')(2596'-5906')	Mysis Unit 2H AWB
5915.50	14150.00	BHI AutoTrak Curve (Short)	05 BHI AT Curve <8-1/2">(5915.5')(5985'-14150')	Mysis Unit 2H AWB
14150.00	14183.00	Blind Drilling (std)	Projection to bit	Mysis Unit 2H AWB

RECEIVED  
 Office of Oil and Gas  
 FEB 13 2019  
 WV Department of  
 Environmental Protection





# Actual Wellpath Report

Mysis Unit 2H AWP Proj: 14183'

Page 10 of 10



## REFERENCE WELLPATH IDENTIFICATION

Operator	ANTERO RESOURCES CORPORATION	Slot	Slot #02
Area	Tyler County, WV	Well	Mysis Unit 2H
Field	Tyler	Wellbore	Mysis Unit 2H AWB
Facility	Vera Pad		

## COMMENTS

### Wellpath general comments

API: 47-095-02395-0000  
BHI Job #: 8790012  
Rig: Frontier 22  
Duration: 09/30/2017-10/02/2017  
Gyrodata MS Gyro <17-1/2"> (100'-713')  
Gyrodata MS Gyro <12-1/4"> (713')(775'-1404')  
WFT EM <12-1/4"> (1404')(1519'-2486')  
WFT EM <8-3/4"> (2486')(2596'-5906')  
BHI AT Curve <8-1/2"> (5915.5')(5985'-14150')  
Middlesex: 6530' MD  
Burkett: 6691' MD  
Tully: 6751' MD  
Marcellus POE: 6827' MD  
Projected MD at TD: 14183'

RECEIVED  
Office of Oil and Gas  
FEB 13 2019  
WV Department of  
Environmental Protection