



ANTERO RESOURCES CORPORATION

Location: Tyler County, WV
 Field: Tyler
 Facility: Vera Pad

Slot: Slot #03
 Well: Mysis Unit 3H
 Wellbore: Mysis Unit 3H PWB

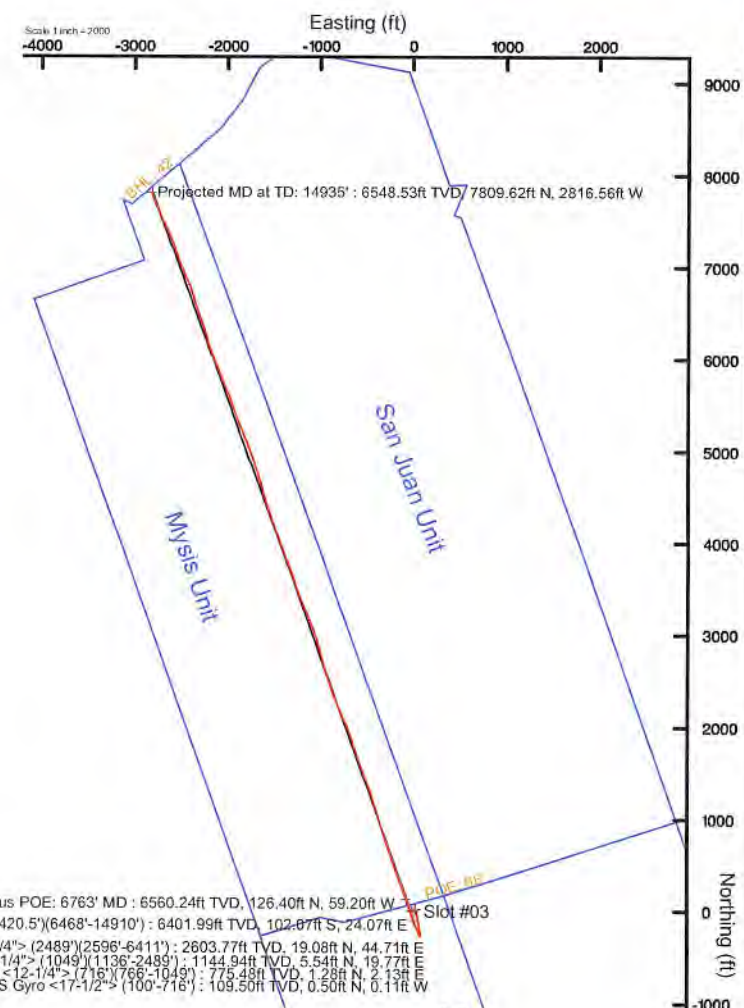
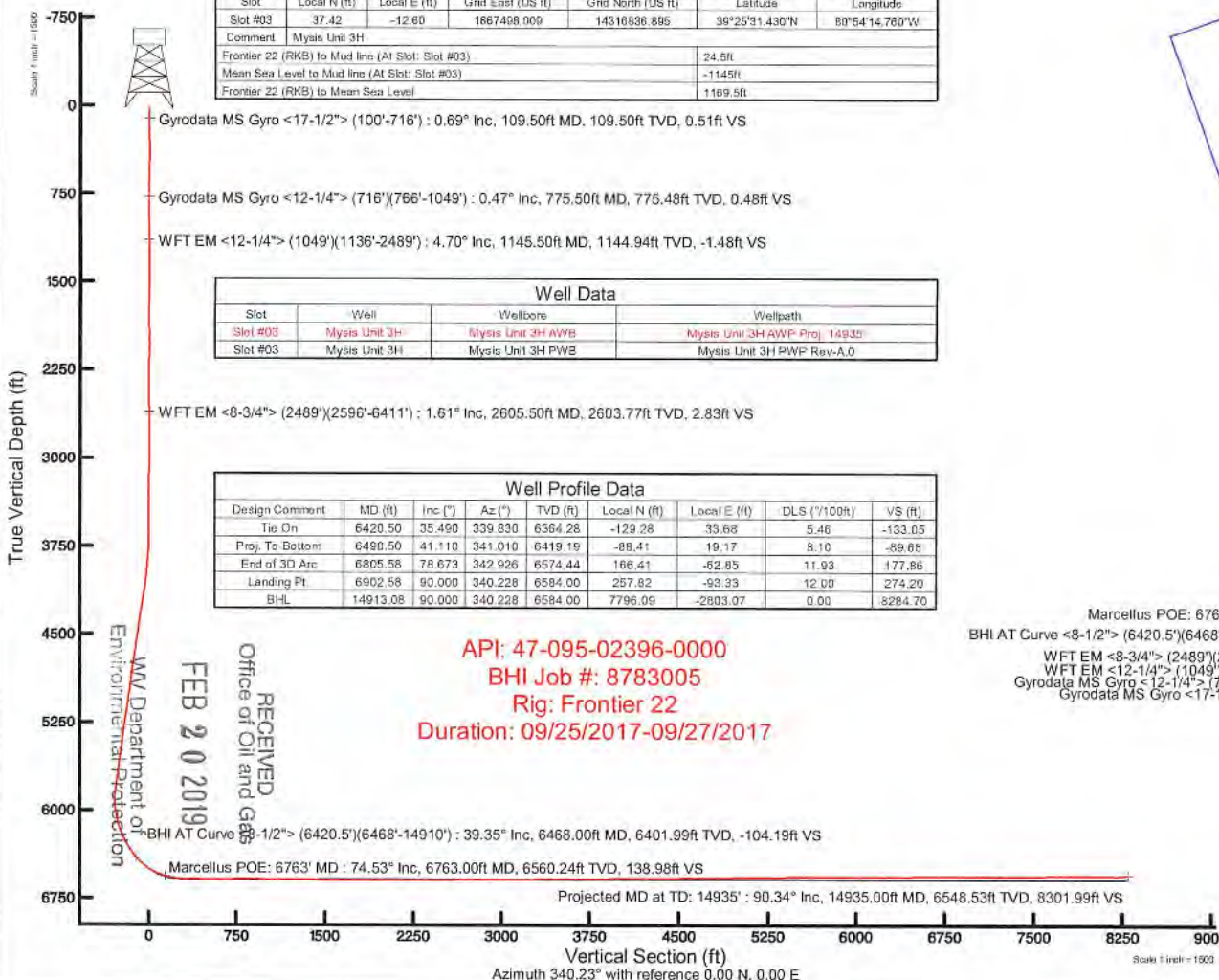


Plot reference wellpath is Mysis Unit 3H PWB Rev-A.0	Grid System: NAD27 / UTM Zone 17 North, US Feet
True vertical depths are referenced to Frontier 22 (RKB)	North Reference: Grid north
Measured depths are referenced to Frontier 22 (RKB)	Scale: True distance
Frontier 22 (RKB) to Mean Sea Level: 1169.5 feet	Depths are in feet
Mean Sea Level to Mid line (At Slot: Slot #03): -145 feet	Created by: delastion 2017-11-01
Coordinates are in feet referenced to Slot	Database: WA_MPL_EasternUS_Defn

Location Information					
Facility Name		Grid East (US ft)	Grid North (US ft)	Latitude	Longitude
Vera Pad		1667510.600	14316799.487	39°25'31.060"N	80°54'14.600"W
Slot	Local N (ft)	Local E (ft)	Grid East (US ft)	Grid North (US ft)	Longitude
Slot #03	37.42	-12.60	1667498.009	14316936.895	39°25'31.430"N
Comment: Mysis Unit 3H					
Frontier 22 (RKB) to Mud line (At Slot: Slot #03)				24.5ft	
Mean Sea Level to Mud line (At Slot: Slot #03)				-1145ft	
Frontier 22 (RKB) to Mean Sea Level				1169.5ft	

Well Data			
Slot	Well	Wellbore	Wellpath
Slot #03	Mysis Unit 3H	Mysis Unit 3H AWB	Mysis Unit 3H AWP Proj. 14935
Slot #03	Mysis Unit 3H	Mysis Unit 3H PWB	Mysis Unit 3H PWB Rev-A.0

Well Profile Data							
Design Comment	MD (ft)	Inc (")	Az (")	TVD (ft)	Local N (ft)	Local E (ft)	VS (ft)
Tie On	6420.50	35.490	339.830	6564.28	-129.28	35.68	-133.05
Proj. To Bottom	6490.50	41.110	341.010	6419.19	-89.41	19.17	-89.68
End of 3D Arc	6805.58	78.673	342.926	6574.44	166.41	-62.85	177.86
Landing Pt.	6902.58	90.000	340.228	6584.00	257.82	-93.33	274.20
BHL	14913.08	90.000	340.228	6584.00	7796.09	-2803.07	8284.70



GRID

W E N S

User specified Dip: 66.68° Field: 51992 nT
 Magnetic North is 7.62 degrees West of True North (at 23/Sep/2017)
 Grid North is 0.06 degrees East of True North
 To correct azimuth from True to Grid subtract 0.06 degrees
 To correct azimuth from Magnetic to Grid subtract 7.66 degrees



Actual Wellpath Report

Mysis Unit 3H AWP Proj: 14935'
Page 1 of 10



REFERENCE WELLPATH IDENTIFICATION			
Operator	ANTERO RESOURCES CORPORATION	Slot	Slot #03
Area	Tyler County, WV	Well	Mysis Unit 3H
Field	Tyler	Wellbore	Mysis Unit 3H AWB
Facility	Vera Pad		

REPORT SETUP INFORMATION			
Projection System	NAD27 / UTM Zone 17 North, US feet	Software System	WellArchitect® 5.1
North Reference	Grid	User	Delaset
Scale	0.999601	Report Generated	01/Nov/2017 at 14:57
Convergence at slot	0.06° East	Database/Source file	WA_MPL_EasternUS_Defn/Mysis_Unit_3H_AWP_Proj_14935_.xml

WELLPATH LOCATION						
	Local coordinates		Grid coordinates		Geographic coordinates	
	North[ft]	East[ft]	Easting[US ft]	Northing[US ft]	Latitude	Longitude
Slot Location	37.42	-12.60	1667498.01	14316836.90	39°25'31.430"N	80°54'14.760"W
Facility Reference Pt			1667510.60	14316799.49	39°25'31.060"N	80°54'14.600"W
Field Reference Pt			0.00	0.00	0°00'00.000"	85°29'19.301"W

WELLPATH DATUM			
Calculation method	Minimum curvature	Frontier 22 (RKB) to Facility Vertical Datum	24.50ft
Horizontal Reference Pt	Slot	Frontier 22 (RKB) to Mean Sea Level	1169.50ft
Vertical Reference Pt	Frontier 22 (RKB)	Frontier 22 (RKB) to Mud Line at Slot (Slot #03)	24.50ft
MD Reference Pt	Frontier 22 (RKB)	Section Origin	N 0.00, E 0.00 ft
Field Vertical Reference	Mean Sea Level	Section Azimuth	340.23°

RECEIVED
 Office of Oil and Gas
 FEB 20 2019
 WV Department of
 Mineral Production



Actual Wellpath Report

Mysis Unit 3H AWP Proj: 14935'

Page 2 of 10



REFERENCE WELLPATH IDENTIFICATION				
Operator	ANTERO RESOURCES CORPORATION		Slot	Slot #03
Area	Tyler County, WV		Well	Mysis Unit 3H
Field	Tyler		Wellbore	Mysis Unit 3H AWB
Facility	Vera Pad			

WELLPATH DATA (184 stations) † = interpolated/extrapolated station																
MD [ft]	Inclination [°]	Azimuth [°]	TVD [ft]	Vert Sect [ft]	North [ft]	East [ft]	Grid East [US ft]	Grid North [US ft]	Latitude	Longitude	Closure Dist [ft]	Closure Dir [°]	DLS [°/100ft]	Build Rate [°/100ft]	Turn Rate [°/100ft]	Comments
0.00	0.000	347.110	0.00	0.00	0.00	0.00	1667498.01	14316836.89	39°25'31.430"N	80°54'14.760"W	0.00	0.000	0.00	0.00	0.00	
24.50	0.000	347.110	24.50	0.00	0.00	0.00	1667498.01	14316836.89	39°25'31.430"N	80°54'14.760"W	0.00	0.000	0.00	0.00	0.00	
109.50	0.690	347.110	109.50	0.51	0.50	-0.11	1667497.89	14316837.39	39°25'31.435"N	80°54'14.761"W	0.51	347.110	0.81	0.81	-15.16	Gyrodata MS Gyro <17-1/2"> (100'-716')
209.50	0.450	9.920	209.49	1.45	1.47	-0.18	1667497.83	14316838.37	39°25'31.445"N	80°54'14.762"W	1.48	352.999	0.33	-0.24	22.81	
309.50	0.380	7.050	309.49	2.08	2.19	-0.07	1667497.94	14316839.08	39°25'31.452"N	80°54'14.761"W	2.19	358.103	0.07	-0.07	-2.87	
409.50	0.340	107.050	409.49	2.20	2.43	0.25	1667498.26	14316839.32	39°25'31.454"N	80°54'14.757"W	2.44	5.916	0.55	-0.04	100.00	
509.50	0.320	117.630	509.49	1.82	2.21	0.78	1667498.79	14316839.11	39°25'31.452"N	80°54'14.750"W	2.35	19.473	0.06	-0.02	10.58	
609.50	0.340	141.740	609.49	1.33	1.85	1.21	1667499.22	14316838.75	39°25'31.448"N	80°54'14.745"W	2.21	33.250	0.14	0.02	24.11	
709.50	0.400	119.580	709.48	0.79	1.45	1.70	1667499.71	14316838.34	39°25'31.444"N	80°54'14.738"W	2.23	49.630	0.15	0.06	-22.16	
725.50	0.400	129.020	725.48	0.70	1.38	1.79	1667499.80	14316838.28	39°25'31.444"N	80°54'14.737"W	2.27	52.346	0.41	0.00	59.00	
775.50	0.470	88.160	775.48	0.48	1.28	2.13	1667500.14	14316838.17	39°25'31.443"N	80°54'14.733"W	2.49	59.035	0.62	0.14	-81.72	Gyrodata MS Gyro <12-1/4"> (716')(766'-1049')
869.50	1.570	80.600	869.47	0.13	1.50	3.79	1667501.80	14316838.40	39°25'31.445"N	80°54'14.712"W	4.08	68.365	1.18	1.17	-8.04	
964.50	3.210	75.770	964.38	-0.36	2.37	7.65	1667505.66	14316839.26	39°25'31.453"N	80°54'14.662"W	8.01	72.794	1.74	1.73	-5.08	
1058.50	4.010	76.300	1058.19	-0.96	3.79	13.40	1667511.40	14316840.69	39°25'31.467"N	80°54'14.589"W	13.92	74.184	0.85	0.85	0.56	
1145.50	4.700	73.350	1144.94	-1.48	5.54	19.77	1667517.77	14316842.43	39°25'31.485"N	80°54'14.508"W	20.53	74.352	0.83	0.79	-3.39	WFT EM <12-1/4"> (1049')(1136'-2489')
1239.50	5.170	69.070	1238.59	-1.60	8.15	27.41	1667525.41	14316845.04	39°25'31.510"N	80°54'14.411"W	28.60	73.436	0.63	0.50	-4.55	
1334.50	4.660	64.390	1333.24	-1.12	11.35	34.89	1667532.89	14316848.24	39°25'31.542"N	80°54'14.315"W	36.69	71.980	0.68	-0.54	-4.93	
1428.50	3.340	66.310	1427.01	-0.54	14.10	40.84	1667538.83	14316850.99	39°25'31.569"N	80°54'14.239"W	43.21	70.952	1.41	-1.40	2.04	
1523.50	1.740	73.430	1521.92	-0.44	15.62	44.76	1667542.75	14316852.51	39°25'31.584"N	80°54'14.189"W	47.41	70.757	1.71	-1.68	7.49	
1617.50	0.320	77.760	1615.90	-0.55	16.09	46.38	1667544.37	14316852.98	39°25'31.589"N	80°54'14.169"W	49.09	70.872	1.51	-1.51	4.61	
1712.50	0.620	287.620	1710.90	-0.27	16.30	46.15	1667544.14	14316853.19	39°25'31.591"N	80°54'14.172"W	48.95	70.549	0.96	0.32	-158.04	
1807.50	1.000	305.290	1805.89	0.72	16.93	44.99	1667542.98	14316853.82	39°25'31.597"N	80°54'14.187"W	48.07	69.373	0.47	0.40	18.60	
1902.50	0.660	336.950	1900.88	1.94	17.92	44.09	1667542.09	14316854.80	39°25'31.607"N	80°54'14.198"W	47.60	67.888	0.59	-0.36	33.33	
1997.50	0.630	37.950	1995.87	2.77	18.83	44.20	1667542.19	14316855.72	39°25'31.616"N	80°54'14.196"W	48.05	66.925	0.69	-0.03	64.21	
2091.50	0.480	171.970	2089.87	2.66	18.85	44.57	1667542.57	14316855.74	39°25'31.616"N	80°54'14.192"W	48.40	67.078	1.09	-0.18	142.57	
2186.50	1.500	201.270	2184.86	1.33	17.30	44.18	1667542.17	14316854.18	39°25'31.600"N	80°54'14.197"W	47.44	68.620	1.16	1.07	30.84	
2280.50	1.120	209.140	2278.83	-0.20	15.35	43.29	1667541.28	14316852.24	39°25'31.581"N	80°54'14.208"W	45.93	70.478	0.45	-0.40	8.37	
2375.50	0.310	348.920	2373.83	-0.55	14.79	42.78	1667540.78	14316851.68	39°25'31.576"N	80°54'14.215"W	45.27	70.932	1.44	-0.85	147.14	
2498.50	1.460	27.380	2496.81	0.84	16.51	43.44	1667541.43	14316853.39	39°25'31.593"N	80°54'14.206"W	46.47	69.194	1.00	0.93	31.27	
2605.50	1.610	25.120	2603.77	2.83	19.08	44.71	1667542.70	14316855.96	39°25'31.618"N	80°54'14.190"W	48.61	66.890	0.15	0.14	-2.11	WFT EM <8-3/4"> (2489')(2596'-6411')



Actual Wellpath Report

Mysis Unit 3H AWP Proj: 14935'

Page 3 of 10



REFERENCE WELLPATH IDENTIFICATION				
Operator	ANTERO RESOURCES CORPORATION		Slot	Slot #03
Area	Tyler County, WV		Well	Mysis Unit 3H
Field	Tyler		Wellbore	Mysis Unit 3H AWB
Facility	Vera Pad			

WELLPATH DATA (184 stations)																
MD (ft)	Inclination (°)	Azimuth (°)	TVD (ft)	Vert Sect (ft)	North (ft)	East (ft)	Grid East (US ft)	Grid North (US ft)	Latitude	Longitude	Closure Dist (ft)	Closure Dir (°)	DLS (°/100ft)	Build Rate (°/100ft)	Turn Rate (°/100ft)	Comments
2699.50	0.260	161.830	2697.76	3.55	20.07	45.33	1667543.32	14316856.96	39°25'31.628"N	80°54'14.182"W	49.58	66.119	1.92	-1.44	145.44	
2793.50	0.410	181.260	2791.76	3.03	19.53	45.39	1667543.38	14316856.42	39°25'31.623"N	80°54'14.181"W	49.42	66.718	0.20	0.16	20.67	
2888.50	0.140	195.230	2886.76	2.61	19.08	45.35	1667543.34	14316855.97	39°25'31.618"N	80°54'14.182"W	49.20	67.184	0.29	-0.28	14.71	
2982.50	0.260	195.390	2980.76	2.35	18.76	45.27	1667543.26	14316855.65	39°25'31.615"N	80°54'14.183"W	49.00	67.485	0.13	0.13	0.17	
3077.50	0.170	194.050	3075.76	2.05	18.42	45.18	1667543.17	14316855.31	39°25'31.612"N	80°54'14.184"W	48.79	67.818	0.09	-0.09	-1.41	
3172.50	0.100	154.340	3170.76	1.85	18.21	45.18	1667543.17	14316855.09	39°25'31.609"N	80°54'14.184"W	48.71	68.049	0.12	-0.07	-41.80	
3266.50	0.130	135.820	3264.76	1.67	18.06	45.29	1667543.28	14316854.94	39°25'31.608"N	80°54'14.183"W	48.75	68.261	0.05	0.03	-19.70	
3362.50	0.410	113.150	3360.75	1.34	17.84	45.68	1667543.67	14316854.73	39°25'31.606"N	80°54'14.178"W	49.04	68.662	0.31	0.29	-23.61	
3457.50	0.350	91.100	3455.75	1.01	17.70	46.28	1667544.27	14316854.59	39°25'31.604"N	80°54'14.170"W	49.55	69.066	0.17	-0.06	-23.21	
3551.50	0.310	127.100	3549.75	0.69	17.55	46.77	1667544.76	14316854.43	39°25'31.603"N	80°54'14.164"W	49.95	69.437	0.22	-0.04	38.30	
3645.50	0.150	99.850	3643.75	0.42	17.37	47.10	1667545.09	14316854.26	39°25'31.601"N	80°54'14.160"W	50.20	69.753	0.20	-0.17	-28.99	
3740.50	1.770	154.350	3738.73	-1.10	16.03	47.85	1667545.84	14316852.92	39°25'31.588"N	80°54'14.150"W	50.47	71.483	1.78	1.71	57.37	
3834.50	3.500	161.170	3832.63	-5.42	12.00	49.41	1667547.40	14316848.89	39°25'31.548"N	80°54'14.130"W	50.84	76.345	1.87	1.84	7.26	
3929.50	5.480	168.220	3927.34	-12.81	4.82	51.27	1667549.26	14316841.71	39°25'31.477"N	80°54'14.107"W	51.50	84.633	2.16	2.08	7.42	
4023.50	7.500	168.270	4020.73	-23.33	-5.58	53.43	1667551.42	14316831.31	39°25'31.374"N	80°54'14.079"W	53.72	95.967	2.15	2.15	0.05	
4118.50	9.120	169.780	4114.73	-36.89	-19.07	56.03	1667554.02	14316817.84	39°25'31.241"N	80°54'14.046"W	59.18	108.792	1.72	1.71	1.59	
4213.50	8.890	169.060	4208.56	-51.57	-33.68	58.76	1667556.74	14316803.23	39°25'31.096"N	80°54'14.012"W	67.73	119.822	0.27	-0.24	-0.76	
4307.50	8.800	166.410	4301.44	-85.90	-47.80	61.83	1667559.81	14316789.11	39°25'30.957"N	80°54'13.973"W	78.15	127.710	0.44	-0.10	-2.82	
4401.50	8.550	169.980	4394.37	-79.93	-61.67	64.73	1667562.72	14316775.25	39°25'30.820"N	80°54'13.936"W	89.41	133.613	0.63	-0.27	3.80	
4496.50	8.630	173.190	4488.30	-93.84	-75.70	66.81	1667564.79	14316761.22	39°25'30.681"N	80°54'13.910"W	100.97	138.573	0.51	0.08	3.38	
4591.50	8.790	170.820	4582.20	-107.92	-89.95	68.81	1667566.79	14316746.98	39°25'30.540"N	80°54'13.884"W	113.25	142.584	0.41	0.17	-2.49	
4685.50	8.850	171.410	4675.09	-122.07	-104.19	71.04	1667569.02	14316732.75	39°25'30.400"N	80°54'13.856"W	126.10	145.714	0.12	0.06	0.63	
4780.50	7.840	171.810	4769.09	-135.59	-117.83	73.05	1667571.03	14316719.12	39°25'30.265"N	80°54'13.831"W	138.63	148.202	1.06	-1.06	0.42	
4875.50	7.740	169.980	4863.21	-148.24	-130.54	75.09	1667573.06	14316706.41	39°25'30.139"N	80°54'13.805"W	150.59	150.093	0.28	-0.11	-1.93	
4970.50	7.560	167.630	4957.36	-160.74	-142.94	77.54	1667575.52	14316694.01	39°25'30.016"N	80°54'13.774"W	162.62	151.523	0.38	-0.19	-2.47	
5065.50	7.910	166.870	5051.50	-173.44	-155.41	80.36	1667578.34	14316681.54	39°25'29.893"N	80°54'13.738"W	174.96	152.657	0.38	0.37	-0.80	
5160.50	8.390	171.100	5145.54	-186.73	-168.63	82.92	1667580.89	14316668.34	39°25'29.763"N	80°54'13.706"W	187.91	153.815	0.81	0.51	4.45	
5254.50	8.760	168.500	5238.49	-200.55	-182.42	85.41	1667583.38	14316654.55	39°25'29.626"N	80°54'13.674"W	201.42	154.911	0.57	0.39	-2.77	
5349.50	8.190	171.550	5332.45	-214.35	-196.20	87.84	1667585.82	14316640.77	39°25'29.490"N	80°54'13.643"W	214.97	155.881	0.76	-0.60	3.21	
5443.50	7.490	164.600	5425.58	-227.02	-208.73	90.45	1667588.43	14316628.25	39°25'29.366"N	80°54'13.610"W	227.49	156.570	1.25	-0.74	-7.39	

RECEIVED
 Office of Oil and Gas
 FEB 20 2019
 WV Department of Environmental Protection



Actual Wellpath Report

Mysis Unit 3H AWP Proj: 14935'

Page 4 of 10



REFERENCE WELLPATH IDENTIFICATION			
Operator	ANTERO RESOURCES CORPORATION		Slot #03
Area	Tyler County, WV		Well
Field	Tyler		Wellbore
Facility	Vera Pad		Mysis Unit 3H AWP

WELLPATH DATA (184 stations) † = interpolated/extrapolated station																
MD	Inclination	Azimuth	TVD	Vert Sect	North	East	Grid East	Grid North	Latitude	Longitude	Closure Dist	Closure Dir	DLS	Build Rate	Turn Rate	Comments
[ft]	[°]	[°]	[ft]	[ft]	[ft]	[ft]	[US ft]	[US ft]			[ft]	[°]	[°/100ft]	[°/100ft]	[°/100ft]	
5538.50	7.730	172.130	5519.74	-239.45	-221.03	92.97	1667590.95	14316615.96	39°25'29.245"N	80°54'13.578"W	239.79	157.186	1.08	0.25	7.93	
5633.50	7.850	169.940	5613.87	-252.09	-233.74	94.98	1667592.95	14316603.24	39°25'29.119"N	80°54'13.553"W	252.30	157.886	0.34	0.13	-2.31	
5727.50	8.320	168.850	5706.93	-265.15	-246.74	97.42	1667595.39	14316590.26	39°25'28.990"N	80°54'13.522"W	265.27	158.455	0.53	0.50	-1.16	
5822.50	8.860	167.710	5800.86	-279.19	-260.63	100.30	1667598.27	14316576.37	39°25'28.853"N	80°54'13.485"W	279.26	158.951	0.60	0.57	-1.20	
5854.50	6.940	171.480	5832.56	-283.53	-264.95	101.12	1667599.08	14316572.05	39°25'28.810"N	80°54'13.475"W	283.59	159.111	6.21	-6.00	11.78	
5885.50	4.820	184.730	5863.40	-286.56	-268.10	101.29	1667599.25	14316568.90	39°25'28.779"N	80°54'13.473"W	286.59	159.304	8.08	-6.84	42.74	
5917.50	3.190	209.670	5895.32	-288.36	-270.21	100.73	1667598.70	14316566.79	39°25'28.758"N	80°54'13.480"W	288.38	159.555	7.34	-5.09	77.94	
5948.50	2.890	272.820	5926.28	-288.62	-270.92	99.53	1667597.50	14316566.08	39°25'28.751"N	80°54'13.495"W	288.63	159.829	10.30	-0.97	203.71	
5980.50	4.900	303.950	5958.21	-287.21	-270.12	97.59	1667595.56	14316566.88	39°25'28.759"N	80°54'13.520"W	287.21	160.137	8.90	6.28	97.28	
6011.50	7.470	315.380	5989.03	-284.31	-267.95	95.07	1667593.04	14316569.05	39°25'28.781"N	80°54'13.552"W	284.31	160.465	9.15	8.29	36.87	
6043.50	10.170	323.410	6020.65	-279.72	-264.20	91.93	1667589.90	14316572.80	39°25'28.818"N	80°54'13.592"W	279.73	160.815	9.25	8.44	25.09	
6074.50	12.800	327.070	6051.03	-273.75	-259.12	88.43	1667586.40	14316577.88	39°25'28.868"N	80°54'13.637"W	273.79	161.157	8.80	8.46	11.81	
6106.50	14.540	332.180	6082.12	-266.32	-252.59	84.63	1667582.60	14316584.41	39°25'28.933"N	80°54'13.685"W	266.39	161.478	6.61	5.44	15.97	
6137.50	16.240	336.090	6112.01	-258.15	-245.18	81.05	1667579.03	14316591.81	39°25'29.006"N	80°54'13.730"W	258.23	161.707	6.42	5.48	12.61	
6168.50	18.560	337.440	6141.59	-248.89	-236.66	77.40	1667575.38	14316600.33	39°25'29.090"N	80°54'13.777"W	249.00	161.889	7.60	7.48	4.35	
6199.50	21.150	336.760	6170.74	-238.38	-226.97	73.30	1667571.28	14316610.02	39°25'29.186"N	80°54'13.829"W	238.51	162.102	8.39	8.35	-2.19	
6231.50	23.450	335.630	6200.35	-226.27	-215.86	68.40	1667566.38	14316621.12	39°25'29.296"N	80°54'13.891"W	226.44	162.419	7.31	7.19	-3.53	
6262.50	25.410	335.900	6228.57	-213.49	-204.17	63.13	1667561.12	14316632.81	39°25'29.411"N	80°54'13.958"W	213.71	162.817	6.33	6.32	0.87	
6294.50	27.350	337.800	6257.24	-199.30	-191.10	57.55	1667555.54	14316645.88	39°25'29.541"N	80°54'14.029"W	199.57	163.239	6.61	6.06	5.94	
6325.50	29.730	338.620	6284.47	-184.50	-177.34	52.06	1667550.05	14316659.62	39°25'29.677"N	80°54'14.099"W	184.83	163.640	7.78	7.68	2.65	
6357.50	32.080	338.530	6311.92	-168.07	-162.04	46.06	1667544.05	14316674.92	39°25'29.828"N	80°54'14.175"W	168.46	164.134	7.35	7.34	-0.28	
6388.50	33.760	339.400	6337.94	-151.23	-146.32	40.01	1667538.00	14316690.63	39°25'29.983"N	80°54'14.252"W	151.69	164.706	5.63	5.42	2.81	
6420.50	35.490	339.830	6364.28	-133.05	-129.28	33.68	1667531.68	14316707.67	39°25'30.152"N	80°54'14.333"W	133.59	165.398	5.46	5.41	1.34	
6468.00	39.350	341.210	6401.99	-104.19	-102.07	24.07	1667522.07	14316734.87	39°25'30.421"N	80°54'14.455"W	104.87	166.730	8.32	8.13	2.91	BHI AT Curve <8-1/2"> (6420.5')(6468'-14910')
6479.00†	40.325	341.240	6410.44	-97.15	-95.39	21.80	1667519.80	14316741.54	39°25'30.487"N	80°54'14.483"W	97.85	167.126	8.87	8.87	0.27	Middlesex: 6479' MD
6483.00	40.680	341.250	6413.48	-94.55	-92.93	20.97	1667518.97	14316744.00	39°25'30.511"N	80°54'14.494"W	95.27	167.286	8.87	8.87	0.26	
6530.00	46.710	340.850	6447.45	-62.10	-62.24	10.42	1667508.43	14316774.68	39°25'30.815"N	80°54'14.628"W	63.11	170.494	12.84	12.83	-0.85	
6577.00	51.960	340.100	6478.07	-26.46	-28.66	-1.50	1667496.51	14316808.25	39°25'31.147"N	80°54'14.779"W	28.69	182.990	11.24	11.17	-1.60	
6619.00†	57.116	339.776	6502.42	7.74	3.47	-13.23	1667484.78	14316840.36	39°25'31.464"N	80°54'14.929"W	13.68	284.677	12.29	12.28	-0.77	Burkett: 6619' MD
6624.00	57.730	339.740	6505.12	11.95	7.42	-14.69	1667483.33	14316844.31	39°25'31.503"N	80°54'14.947"W	16.46	296.796	12.29	12.28	-0.72	

RECEIVED
 Office of Oil and Gas
 FEB 20 2019
 WV Department of
 Environmental Protection



Actual Wellpath Report

Mysis Unit 3H AWP Proj: 14935'

Page 5 of 10



REFERENCE WELLPATH IDENTIFICATION				
Operator	ANTERO RESOURCES CORPORATION		Slot	Slot #03
Area	Tyler County, WV		Well	Mysis Unit 3H
Field	Tyler		Wellbore	Mysis Unit 3H AWP
Facility	Vera Pad			

WELLPATH DATA (184 stations) † = interpolated/extrapolated station																
MD	Inclination	Azimuth	TVD	Vert Sect	North	East	Grid East	Grid North	Latitude	Longitude	Closure Dist	Closure Dir	DLS	Build Rate	Turn Rate	Comments
(ft)	(°)	(°)	(ft)	(ft)	(ft)	(ft)	(US ft)	(US ft)			(ft)	(°)	(ft/100ft)	(ft/100ft)	(ft/100ft)	
6672.00	63.900	339.330	6528.51	53.83	46.66	-29.34	1667468.68	14316883.54	39°25'31.891"N	80°54'15.133"W	55.12	327.840	12.88	12.85	-0.85	
6676.00†	64.427	339.347	6530.25	57.43	50.03	-30.61	1667467.41	14316886.90	39°25'31.925"N	80°54'15.149"W	58.65	328.541	13.18	13.17	0.42	Tully: 6676' MD
6719.00	70.090	339.520	6546.87	97.07	87.14	-44.53	1667453.49	14316924.00	39°25'32.292"N	80°54'15.326"W	97.86	332.932	13.18	13.17	0.40	
6763.00†	74.535	339.520	6560.24	138.98	126.40	-59.20	1667438.84	14316963.25	39°25'32.680"N	80°54'15.513"W	139.58	334.906	10.10	10.10	0.00	Marcellus POE: 6763' MD
6768.00	75.040	339.520	6581.55	143.80	130.92	-60.88	1667437.15	14316967.77	39°25'32.725"N	80°54'15.534"W	144.39	335.080	10.10	10.10	0.00	
6815.00	79.570	341.310	6571.87	189.64	174.11	-76.24	1667421.80	14317010.94	39°25'33.152"N	80°54'15.729"W	190.07	336.352	10.33	9.64	3.81	
6862.00	82.280	342.050	6579.29	236.03	218.17	-90.83	1667407.22	14317054.97	39°25'33.587"N	80°54'15.914"W	236.32	337.397	5.97	5.77	1.57	
6926.00	89.630	342.370	6583.80	299.79	278.91	-110.32	1667387.73	14317115.69	39°25'34.188"N	80°54'16.162"W	299.94	338.420	11.50	11.48	0.50	
6957.00	90.180	341.390	6583.85	330.77	308.37	-119.96	1667378.10	14317145.15	39°25'34.479"N	80°54'16.285"W	330.89	338.744	3.63	1.77	-3.16	
7052.00	89.910	340.350	6583.77	425.77	398.13	-151.09	1667346.98	14317234.86	39°25'35.366"N	80°54'16.680"W	425.83	339.218	1.13	-0.28	-1.09	
7147.00	89.850	340.100	6583.97	520.77	487.52	-183.23	1667314.85	14317324.22	39°25'36.250"N	80°54'17.088"W	520.82	339.402	0.27	-0.06	-0.26	
7242.00	90.000	340.740	6584.10	615.77	577.03	-215.07	1667283.03	14317413.69	39°25'37.135"N	80°54'17.493"W	615.81	339.559	0.69	0.16	0.67	
7337.00	90.250	340.440	6583.89	710.76	666.63	-246.64	1667251.47	14317503.26	39°25'38.021"N	80°54'17.894"W	710.79	339.696	0.41	0.26	-0.32	
7431.00	90.220	340.500	6583.51	804.76	755.22	-278.06	1667220.06	14317591.81	39°25'38.897"N	80°54'18.293"W	804.79	339.787	0.07	-0.03	0.06	
7526.00	89.780	342.520	6583.51	899.73	845.31	-308.19	1667189.94	14317681.87	39°25'39.788"N	80°54'18.676"W	899.74	339.969	2.18	-0.46	2.13	
7620.00	89.510	343.020	6584.09	993.64	935.09	-336.03	1667162.11	14317771.61	39°25'40.675"N	80°54'19.030"W	993.64	340.234	0.60	-0.29	0.53	
7715.00	89.450	342.870	6584.95	1088.53	1025.91	-363.90	1667134.26	14317862.39	39°25'41.573"N	80°54'19.383"W	1088.54	340.470	0.17	-0.06	-0.16	
7810.00	89.510	342.530	6585.81	1183.44	1116.61	-392.15	1667106.02	14317953.06	39°25'42.470"N	80°54'19.742"W	1183.47	340.649	0.36	0.06	-0.36	
7906.00	89.540	341.760	6586.61	1279.38	1207.98	-421.58	1667076.60	14318044.39	39°25'43.373"N	80°54'20.116"W	1279.43	340.761	0.80	0.03	-0.80	
8000.00	89.080	341.340	6587.74	1373.35	1297.14	-451.32	1667046.87	14318133.52	39°25'44.255"N	80°54'20.494"W	1373.42	340.815	0.66	-0.49	-0.45	
8095.00	89.080	339.720	6589.27	1468.33	1386.70	-482.98	1667015.22	14318223.03	39°25'45.140"N	80°54'20.896"W	1468.40	340.797	1.71	0.00	-1.71	
8189.00	89.260	337.840	6590.63	1562.28	1474.31	-517.00	1666981.21	14318310.61	39°25'46.007"N	80°54'21.329"W	1562.33	340.676	2.01	0.19	-2.00	
8284.00	89.660	339.750	6591.52	1657.25	1562.87	-551.36	1666946.87	14318399.14	39°25'46.882"N	80°54'21.765"W	1657.27	340.568	2.05	0.42	2.01	
8379.00	89.820	341.310	6591.95	1752.24	1652.43	-583.02	1666915.22	14318488.66	39°25'47.768"N	80°54'22.168"W	1752.27	340.566	1.65	0.17	1.64	
8474.00	89.780	341.710	6592.29	1847.22	1742.53	-613.15	1666885.10	14318578.72	39°25'48.659"N	80°54'22.550"W	1847.26	340.614	0.42	-0.04	0.42	
8569.00	89.910	343.840	6592.54	1942.12	1833.26	-641.28	1666856.98	14318669.42	39°25'49.556"N	80°54'22.908"W	1942.19	340.720	2.25	0.14	2.24	
8664.00	90.340	340.260	6592.34	2037.05	1923.62	-670.56	1666827.72	14318759.75	39°25'50.449"N	80°54'23.280"W	2037.15	340.782	3.80	0.45	-3.77	
8758.00	90.370	335.570	6591.75	2130.95	2010.70	-705.89	1666792.40	14318846.79	39°25'51.310"N	80°54'23.729"W	2131.01	340.656	4.99	0.03	-4.99	
8854.00	90.280	335.650	6591.21	2226.63	2098.13	-745.53	1666752.78	14318934.18	39°25'52.175"N	80°54'24.233"W	2226.65	340.438	0.13	-0.09	0.08	
8949.00	90.340	337.380	6590.69	2321.43	2185.26	-783.39	1666714.94	14319021.27	39°25'53.036"N	80°54'24.714"W	2321.43	340.278	1.82	0.06	1.82	

RECEIVED
 Office of Oil and Gas
 FEB 20 2019
 WV Department of
 Environmental Protection



Actual Wellpath Report

Mysis Unit 3H AWP Proj: 14935'

Page 6 of 10



REFERENCE WELLPATH IDENTIFICATION			
Operator	ANTERO RESOURCES CORPORATION		Slot #03
Area	Tyler County, WV		Well Mysis Unit 3H
Field	Tyler		Wellbore Mysis Unit 3H AWB
Facility	Vera Pad		

WELLPATH DATA (184 stations)																
MD [ft]	Inclination [°]	Azimuth [°]	TVD [ft]	Vert Sect [ft]	North [ft]	East [ft]	Grid East [US ft]	Grid North [US ft]	Latitude	Longitude	Closure Dist [ft]	Closure Dir [°]	DLS [°/100ft]	Build Rate [°/100ft]	Turn Rate [°/100ft]	Comments
9044.00	90.310	338.530	6590.15	2416.35	2273.31	-819.04	1666679.30	14319109.29	39°25'53.907"N	80°54'25.167"W	2416.35	340.187	1.21	-0.03	1.21	
9138.00	90.490	339.490	6589.50	2510.33	2361.07	-852.71	1666645.64	14319197.01	39°25'54.774"N	80°54'25.595"W	2510.33	340.143	1.04	0.19	1.02	
9232.00	90.370	339.940	6588.79	2604.32	2449.23	-885.30	1666613.06	14319285.15	39°25'55.646"N	80°54'26.009"W	2604.32	340.127	0.50	-0.13	0.48	
9327.00	90.400	341.350	6588.15	2699.31	2538.86	-916.78	1666581.59	14319374.74	39°25'56.532"N	80°54'26.409"W	2699.32	340.145	1.48	0.03	1.48	
9422.00	90.430	343.890	6587.47	2794.22	2629.51	-945.16	1666553.23	14319485.35	39°25'57.429"N	80°54'26.770"W	2794.22	340.229	2.67	0.03	2.67	
9517.00	90.310	345.810	6586.85	2888.91	2721.21	-969.98	1666528.41	14319557.01	39°25'58.335"N	80°54'27.085"W	2888.92	340.381	2.02	-0.13	2.02	
9611.00	90.370	345.400	6586.30	2982.49	2812.25	-993.35	1666505.06	14319648.02	39°25'59.235"N	80°54'27.382"W	2982.54	340.546	0.44	0.06	-0.44	
9707.00	90.460	342.180	6585.60	3078.29	2904.42	-1020.16	1666478.26	14319740.15	39°26'00.146"N	80°54'27.722"W	3078.37	340.646	3.38	0.09	-3.38	
9801.00	90.340	340.360	6584.94	3172.27	2993.43	-1050.36	1666448.07	14319829.12	39°26'01.026"N	80°54'28.106"W	3172.36	340.665	1.92	-0.13	-1.91	
9896.00	90.710	340.150	6584.07	3267.27	3082.84	-1082.45	1666415.99	14319918.50	39°26'01.910"N	80°54'28.514"W	3267.35	340.653	0.45	0.39	-0.22	
9991.00	90.520	338.440	6583.05	3362.24	3171.69	-1116.04	1666382.42	14320007.32	39°26'02.789"N	80°54'28.941"W	3362.32	340.614	1.81	-0.20	-1.80	
10086.00	90.370	336.380	6582.32	3457.12	3259.40	-1152.53	1666345.94	14320094.99	39°26'03.656"N	80°54'29.405"W	3457.17	340.526	2.17	-0.16	-2.17	
10181.00	90.370	337.280	6581.70	3551.95	3346.73	-1189.91	1666308.58	14320182.29	39°26'04.520"N	80°54'29.880"W	3551.97	340.428	0.95	0.00	0.95	
10276.00	90.430	338.270	6581.04	3646.86	3434.67	-1225.84	1666272.66	14320270.19	39°26'05.389"N	80°54'30.337"W	3646.87	340.358	1.04	0.06	1.04	
10371.00	90.430	339.260	6580.33	3741.82	3523.22	-1260.24	1666238.27	14320358.70	39°26'06.265"N	80°54'30.774"W	3741.83	340.318	1.04	0.00	1.04	
10467.00	90.490	340.790	6579.55	3837.82	3613.44	-1293.04	1666205.49	14320448.88	39°26'07.157"N	80°54'31.191"W	3837.82	340.311	1.59	0.06	1.59	
10561.00	90.550	341.200	6578.70	3931.81	3702.31	-1323.65	1666174.89	14320537.72	39°26'08.035"N	80°54'31.580"W	3931.81	340.327	0.44	0.06	0.44	
10656.00	90.710	339.760	6577.66	4026.80	3791.84	-1355.39	1666143.16	14320627.21	39°26'08.920"N	80°54'31.983"W	4026.80	340.331	1.54	0.17	-1.53	
10751.00	90.550	339.360	6576.61	4121.78	3880.85	-1388.58	1666109.99	14320716.19	39°26'09.800"N	80°54'32.405"W	4121.79	340.313	0.44	-0.17	-0.41	
10847.00	90.520	339.010	6575.72	4217.76	3970.58	-1422.69	1666075.89	14320805.88	39°26'10.688"N	80°54'32.839"W	4217.77	340.287	0.37	-0.03	-0.36	
10942.00	89.970	338.730	6575.31	4312.74	4059.19	-1456.93	1666041.66	14320894.46	39°26'11.564"N	80°54'33.274"W	4312.74	340.256	0.65	-0.58	-0.29	
11036.00	90.710	340.940	6574.75	4406.73	4147.42	-1489.34	1666009.27	14320982.65	39°26'12.436"N	80°54'33.686"W	4406.73	340.247	2.48	0.79	2.35	
11132.00	90.430	340.770	6573.80	4502.71	4238.11	-1520.82	1665977.80	14321073.30	39°26'13.333"N	80°54'34.086"W	4502.72	340.260	0.34	-0.29	-0.18	
11226.00	90.800	342.010	6572.79	4596.69	4327.19	-1550.81	1665947.82	14321162.34	39°26'14.213"N	80°54'34.467"W	4596.69	340.283	1.38	0.39	1.32	
11320.00	90.680	343.330	6571.57	4690.59	4416.91	-1578.81	1665919.83	14321252.03	39°26'15.101"N	80°54'34.823"W	4690.60	340.331	1.41	-0.13	1.40	
11415.00	90.490	344.060	6570.60	4785.41	4508.08	-1605.48	1665893.17	14321343.17	39°26'16.002"N	80°54'35.161"W	4785.43	340.397	0.79	-0.20	0.77	
11510.00	90.620	345.020	6569.68	4880.14	4599.64	-1630.80	1665867.86	14321434.69	39°26'16.907"N	80°54'35.483"W	4880.18	340.478	1.02	0.14	1.01	
11604.00	90.550	345.080	6568.72	4973.80	4690.45	-1655.05	1665843.62	14321525.47	39°26'17.805"N	80°54'35.791"W	4973.89	340.564	0.10	-0.07	0.06	
11699.00	90.490	342.790	6567.86	5068.59	4781.73	-1681.34	1665817.35	14321616.71	39°26'18.707"N	80°54'36.125"W	5068.71	340.627	2.41	-0.06	-2.41	
11794.00	91.110	341.110	6566.54	5163.54	4872.05	-1710.77	1665787.93	14321706.99	39°26'19.600"N	80°54'36.499"W	5163.68	340.652	1.88	0.65	-1.77	

RECEIVED
 Office of Oil and Gas
 FEB 20 2019
 WV Department of
 Environmental Protection



Actual Wellpath Report

Mysis Unit 3H AWP Proj: 14935'

Page 7 of 10



REFERENCE WELLPATH IDENTIFICATION				
Operator	ANTERO RESOURCES CORPORATION		Slot	Slot #03
Area	Tyler County, WV		Well	Mysis Unit 3H
Field	Tyler		Wellbore	Mysis Unit 3H AWP
Facility	Vera Pad			

WELLPATH DATA (184 stations)																
MD [ft]	Inclination [°]	Azimuth [°]	TVD [ft]	Vert Sect [ft]	North [ft]	East [ft]	Grid East [US ft]	Grid North [US ft]	Latitude	Longitude	Closure Dist [ft]	Closure Dir [°]	DLS [°/100ft]	Build Rate [°/100ft]	Turn Rate [°/100ft]	Comments
11888.00	90.580	339.700	6565.15	5257.52	4960.59	-1742.29	1665756.42	14321795.49	39°26'20.476"N	80°54'36.899"W	5257.66	340.647	1.60	-0.56	-1.50	
11983.00	90.550	339.240	6564.21	5352.51	5049.55	-1775.60	1665723.12	14321884.42	39°26'21.355"N	80°54'37.323"W	5352.64	340.626	0.49	-0.03	-0.48	
12078.00	90.620	338.460	6563.24	5447.48	5138.15	-1809.88	1665688.86	14321972.98	39°26'22.231"N	80°54'37.759"W	5447.59	340.596	0.82	0.07	-0.82	
12172.00	90.580	337.980	6562.26	5541.41	5225.43	-1844.76	1665653.99	14322060.23	39°26'23.094"N	80°54'38.202"W	5541.50	340.555	0.51	-0.04	-0.51	
12267.00	90.180	338.040	6561.63	5636.34	5313.52	-1880.33	1665618.44	14322148.28	39°26'23.965"N	80°54'38.654"W	5636.41	340.512	0.43	-0.42	0.06	
12362.00	90.180	338.980	6561.33	5731.30	5401.91	-1915.13	1665583.65	14322236.64	39°26'24.839"N	80°54'39.097"W	5731.35	340.479	0.99	0.00	0.99	
12457.00	90.180	340.520	6561.03	5826.29	5491.04	-1948.01	1665550.78	14322325.73	39°26'25.720"N	80°54'39.515"W	5826.34	340.467	1.62	0.00	1.62	
12552.00	90.520	340.390	6560.45	5921.29	5580.56	-1979.79	1665519.01	14322415.22	39°26'26.605"N	80°54'39.919"W	5921.34	340.467	0.38	0.36	-0.14	
12647.00	90.180	338.430	6559.87	6016.27	5669.49	-2013.20	1665485.62	14322504.11	39°26'27.485"N	80°54'40.343"W	6016.31	340.450	2.09	-0.36	-2.06	
12741.00	90.220	337.370	6559.54	6110.19	5756.58	-2048.56	1665450.27	14322591.16	39°26'28.346"N	80°54'40.793"W	6110.22	340.411	1.13	0.04	-1.13	
12836.00	90.120	338.380	6559.26	6205.11	5844.58	-2084.34	1665414.50	14322679.13	39°26'29.216"N	80°54'41.248"W	6205.13	340.372	1.07	-0.11	1.06	
12930.00	90.150	337.870	6559.04	6299.04	5931.81	-2119.36	1665379.50	14322766.33	39°26'30.078"N	80°54'41.693"W	6299.06	340.339	0.54	0.03	-0.54	
13025.00	90.030	339.450	6558.89	6394.01	6020.30	-2153.93	1665344.94	14322854.78	39°26'30.953"N	80°54'42.133"W	6394.01	340.314	1.67	-0.13	1.66	
13120.00	90.150	340.760	6558.74	6489.00	6109.63	-2186.26	1665312.63	14322944.07	39°26'31.836"N	80°54'42.544"W	6489.01	340.311	1.38	0.13	1.38	
13215.00	90.120	344.410	6558.52	6583.91	6200.25	-2214.69	1665284.21	14323034.66	39°26'32.732"N	80°54'42.905"W	6583.92	340.344	3.84	-0.03	3.84	
13309.00	90.180	343.860	6558.27	6677.69	6290.67	-2240.38	1665258.52	14323125.04	39°26'33.626"N	80°54'43.231"W	6677.72	340.397	0.59	0.06	-0.59	
13404.00	90.180	341.470	6557.97	6772.60	6381.35	-2268.69	1665230.23	14323215.69	39°26'34.523"N	80°54'43.591"W	6772.64	340.429	2.52	0.00	-2.52	
13498.00	90.150	341.720	6557.70	6866.57	6470.54	-2298.37	1665200.56	14323304.84	39°26'35.405"N	80°54'43.968"W	6866.62	340.445	0.27	-0.03	0.27	
13593.00	90.250	341.480	6557.37	6961.54	6560.69	-2328.35	1665170.59	14323394.95	39°26'36.296"N	80°54'44.349"W	6961.60	340.460	0.27	0.11	-0.25	
13687.00	90.180	341.950	6557.02	7055.51	6649.94	-2357.85	1665141.11	14323484.17	39°26'37.178"N	80°54'44.724"W	7055.57	340.477	0.51	-0.07	0.50	
13782.00	90.310	341.250	6556.61	7150.48	6740.08	-2387.83	1665111.14	14323574.27	39°26'38.069"N	80°54'45.105"W	7150.55	340.492	0.75	0.14	-0.74	
13876.00	90.220	339.030	6556.18	7244.47	6828.48	-2419.76	1665079.22	14323662.64	39°26'38.943"N	80°54'45.511"W	7244.55	340.488	2.36	-0.10	-2.36	
13971.00	90.430	337.200	6555.64	7339.40	6916.63	-2455.17	1665043.82	14323750.75	39°26'39.815"N	80°54'45.961"W	7339.46	340.457	1.94	0.22	-1.93	
14066.00	90.430	338.580	6554.92	7434.32	7004.64	-2490.93	1665008.08	14323838.73	39°26'40.685"N	80°54'46.416"W	7434.36	340.424	1.45	0.00	1.45	
14161.00	90.370	338.880	6554.26	7529.28	7093.17	-2525.39	1664973.63	14323927.22	39°26'41.560"N	80°54'46.854"W	7529.32	340.403	0.32	-0.06	0.32	
14256.00	90.310	341.230	6553.70	7624.27	7182.46	-2557.79	1664941.24	14324016.47	39°26'42.443"N	80°54'47.266"W	7624.31	340.398	2.47	-0.06	2.47	
14352.00	90.860	339.700	6552.72	7720.26	7272.93	-2589.89	1664909.16	14324106.90	39°26'43.338"N	80°54'47.674"W	7720.30	340.399	1.69	0.57	-1.59	
14447.00	90.370	336.040	6551.70	7815.16	7360.91	-2625.67	1664873.39	14324194.85	39°26'44.208"N	80°54'48.129"W	7815.19	340.368	3.89	-0.52	-3.85	
14541.00	90.400	334.950	6551.06	7908.84	7446.44	-2664.66	1664834.42	14324280.35	39°26'45.053"N	80°54'48.625"W	7908.85	340.311	1.16	0.03	-1.16	
14636.00	90.370	334.750	6550.43	8003.42	7532.43	-2705.03	1664794.07	14324366.30	39°26'45.904"N	80°54'49.139"W	8003.42	340.246	0.21	-0.03	-0.21	

RECEIVED
 Office of Oil and Gas
 FEB 20 2019
 WV Department of
 Environmental Protection



Actual Wellpath Report

Mysis Unit 3H AWP Proj: 14935'

Page 8 of 10



REFERENCE WELLPATH IDENTIFICATION			
Operator	ANTERO RESOURCES CORPORATION	Slot	Slot #03
Area	Tyler County, WV	Well	Mysis Unit 3H
Field	Tyler	Wellbore	Mysis Unit 3H AWB
Facility	Vera Pad		

WELLPATH DATA (184 stations)																
MD (ft)	Inclination (°)	Azimuth (°)	TVD (ft)	Vert Sect (ft)	North (ft)	East (ft)	Grid East (US ft)	Grid North (US ft)	Latitude	Longitude	Closure Dist (ft)	Closure Dir (°)	DLS (°/100ft)	Build Rate (°/100ft)	Turn Rate (°/100ft)	Comments
14731.00	90.340	336.600	6549.84	8098.11	7618.99	-2744.16	1664754.95	14324452.83	39°26'46.759"N	80°54'49.636"W	8098.11	340.192	1.95	-0.03	1.95	
14826.00	90.400	338.810	6549.22	8193.01	7706.88	-2780.20	1664718.93	14324540.69	39°26'47.628"N	80°54'50.095"W	8193.02	340.163	2.33	0.06	2.33	
14910.00	90.340	341.570	6548.68	8277.00	7785.90	-2808.66	1664690.48	14324619.67	39°26'48.410"N	80°54'50.457"W	8277.01	340.164	3.29	-0.07	3.29	
14935.00	90.340	341.570	6548.53	8301.99	7809.62	-2816.56	1664682.58	14324643.38	39°26'48.644"N	80°54'50.557"W	8302.00	340.168	0.00	0.00	0.00	Projected MD at TD: 14935'

HOLE & CASING SECTIONS - Ref Wellbore: Mysis Unit 3H AWB Ref Wellpath: Mysis Unit 3H AWP Proj: 14935'										
String/Diameter	Start MD (ft)	End MD (ft)	Interval (ft)	Start TVD (ft)	End TVD (ft)	Start N/S (ft)	Start E/W (ft)	End N/S (ft)	End E/W (ft)	
20in Conductor	24.50	104.50	80.00	24.50	104.50	0.00	0.00	0.44	-0.10	
17.5in Open Hole	104.50	751.50	647.00	104.50	751.48	0.44	-0.10	1.30	1.95	
13.375in Casing Surface	24.50	751.50	727.00	24.50	751.48	0.00	0.00	1.30	1.95	
12.25in Open Hole	751.50	2581.50	1830.00	751.48	2579.78	1.30	1.95	18.47	44.42	
9.625in Casing Intermediate	24.50	2581.50	2557.00	24.50	2579.78	0.00	0.00	18.47	44.42	
8.75in Open Hole	2581.50	6490.50	3909.00	2579.78	6419.13	18.47	44.42	-88.26	19.38	
8.5in Open Hole	6490.50	14935.00	8444.50	6419.13	6548.53	-88.26	19.38	7809.62	-2816.56	
5.5in Casing Production	24.50	14935.00	14910.50	24.50	6548.53	0.00	0.00	7809.62	-2816.56	

RECEIVED
 Office of Oil and Gas
 WV Department of
 Environmental Protection
 FEB 20 2019



Actual Wellpath Report

Mysis Unit 3H AWP Proj: 14935'

Page 9 of 10



REFERENCE WELLPATH IDENTIFICATION			
Operator	ANTERO RESOURCES CORPORATION	Slot	Slot #03
Area	Tyler County, WV	Well	Mysis Unit 3H
Field	Tyler	Wellbore	Mysis Unit 3H AWB
Facility	Vera Pad		

TARGETS								
Name	TVD [ft]	North [ft]	East [ft]	Grid East [US ft]	Grid North [US ft]	Latitude	Longitude	Shape
Mysis Unit 3H POE Plat	6558.00	140.16	-51.03	1667447.00	14316977.00	39°25'32.816"N	80°54'15.408"W	point
Mysis Unit 3H BHL Plat	6584.00	7742.45	-2783.79	1664715.34	14324576.24	39°26'47.980"N	80°54'50.140"W	point
Mysis Unit 3H BHL Rev-1	6584.00	7796.09	-2803.07	1664696.07	14324629.86	39°26'48.510"N	80°54'50.385"W	point
Mysis Unit 3H LP Rev-1	6584.00	257.82	-93.33	1667404.72	14317094.62	39°25'33.979"N	80°54'15.946"W	point
Mysis Unit 3H 25' L/R Hard Line	6800.00	4026.96	-1448.20	1666050.39	14320862.24	39°26'11.245"N	80°54'33.163"W	rectangle

WELLPATH COMPOSITION - Ref Wellbore: Mysis Unit 3H AWB Ref Wellpath: Mysis Unit 3H AWP Proj: 14935'					
Start MD [ft]	End MD [ft]	Positional Uncertainty Model	Log Name/Comment	Wellbore	
24.50	725.50	Gyrodata standard - Drop gyro or Multi-shot	01 Gyrodata MS Gyro <17-1/2">(100'-716')	Mysis Unit 3H AWB	
725.50	1058.50	Gyrodata standard - Drop gyro or Multi-shot	02 Gyrodata MS Gyro <12-1/4">(716')(766'-1049')	Mysis Unit 3H AWB	
1058.50	2498.50	ISCWSA MWD, Rev. 4 (Standard)	03 WFT EM <12-1/4">(1049')(1136'-2489')	Mysis Unit 3H AWB	
2498.50	6420.50	ISCWSA MWD, Rev. 4 (Standard)	04 WFT EM <8-3/4">(2489')(2596'-6411')	Mysis Unit 3H AWB	
6420.50	14910.00	BHI AutoTrak Curve (Short)	05 BH AT Curve <8-1/2">(6420.5')(6468'-14910')	Mysis Unit 3H AWB	
14910.00	14935.00	Blind Drilling (std)	Projection to bit	Mysis Unit 3H AWB	

RECEIVED
 Office of Oil and Gas
 FEB 20 2019
 WV Department of
 Environmental Protection



Actual Wellpath Report

Mysis Unit 3H AWP Proj: 14935'

Page 10 of 10



REFERENCE WELLPATH IDENTIFICATION			
Operator	ANTERO RESOURCES CORPORATION	Slot	Slot #03
Area	Tyler County, WV	Well	Mysis Unit 3H
Field	Tyler	Wellbore	Mysis Unit 3H AWB
Facility	Vera Pad		

COMMENTS
<p>Wellpath general comments API: 47-095-02396-0000 BHI Job #: 8783005 Rig: Frontier 22 Duration: 09/25/2017-09/27/2017 Gyrodata MS Gyro <17-1/2"> (100'-716') Gyrodata MS Gyro <12-1/4"> (716')(766'-1049') WFT EM <12-1/4"> (1049')(1136'-2489') WFT EM <8-3/4"> (2489')(2596'-6411') BHI AT Curve <8-1/2"> (6420.5')(6468'-14910') Middlesex: 6479' MD Burkett: 6619' MD Tully: 6676' MD Marcellus POE: 6763' MD Projected MD at TD: 14935'</p>

RECEIVED
Office of Oil and Gas
FEB 20 2019
WV Department of
Environmental Protection