

RECEIVED  
 Office of Oil and Gas  
 JUN 12 2020  
 WV Department of Environmental Protection

(+) DENOTES LOCATION OF WELL ON UNITED STATES TOPOGRAPHIC MAPS

FILE NO. 4  
 DRAWING NO. 1  
 SCALE 1" = 2000'  
 MINIMUM DEGREE OF ACCURACY 1 in 200  
 PROVEN SOURCE OF ELEVATION GPS  
 submeter unit

I THE UNDERSIGNED, HEREBY CERTIFY THAT THIS PLAT IS CORRECT TO THE BEST OF MY KNOWLEDGE AND BELIEF AND SHOWS ALL THE INFORMATION REQUIRED BY LAW AND THE RULES ISSUED AND PRESCRIBED BY THE DEPARTMENT OF ENVIRONMENTAL PROTECTION.  
 (SIGNED) David G. Dalton  
 R.P.E. P.S. 708



STATE OF WEST VIRGINIA  
 Division of Environmental Protection  
 OFFICE OF OIL AND GAS

DATE October 02, 2019  
 OPERATOR'S WELL NO. Curly 1  
 API WELL NO. 47 095 02445

WELL TYPE: OIL GAS  LIQUID INJECTION WASTE DISPOSAL STATE COUNTY PERMIT  
 (IF 'GAS') PRODUCTION X STORAGE DEEP SHALLOW X

LOCATION: ELEVATION 1,124.8' WATER SHED Middle Island Creek  
 DISTRICT Ellsworth COUNTY Tyler  
 QUADRANGLE Middlebourne 7 1/2'

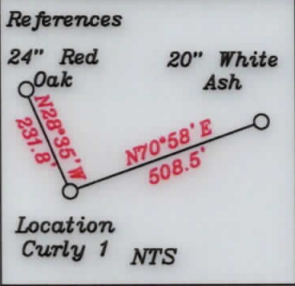
SURFACE OWNER Jay-Bee Oil & Gas Inc. ACREAGE 286.039 Ac.  
 OIL & GAS ROYALTY OWNER Ridgetop Capital LP, & Ridgetop Capital II, LP LEASE ACREAGE 286.039 Ac.  
 LEASE NO. RT2

PROPOSED WORK: DRILL  CONVERT  REDRILL  FRACTURE OR STIMULATE  PLUG OFF OLD FORMATION  PERFORATE NEW FORMATION  OTHER PHYSICAL CHANGE IN WELL (SPECIFY) As Drilled

PLUG AND ABANDON  CLEAN OUT AND REPLUG   
 TARGET FORMATION Marcellus ESTIMATED DEPTH TVD = 6,600' TMD = 14,056'  
 WELL OPERATOR Jay-Bee Oil & Gas, Inc. DESIGNATED AGENT Randy Broda  
 ADDRESS 60 Walnut Avenue, Suite 190, Clark, NJ 07066 ADDRESS 3570 Shields Hill Rd, Cairo, WV 26337

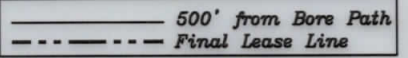
LONGITUDE 80-52-30 W Bottom Hole 4,555'  
 LONGITUDE 80-52-30 N Bottom Hole 6,237'





LATITUDE 39-30-00 N (TH)  
LATITUDE 39-27-30 N (BH)

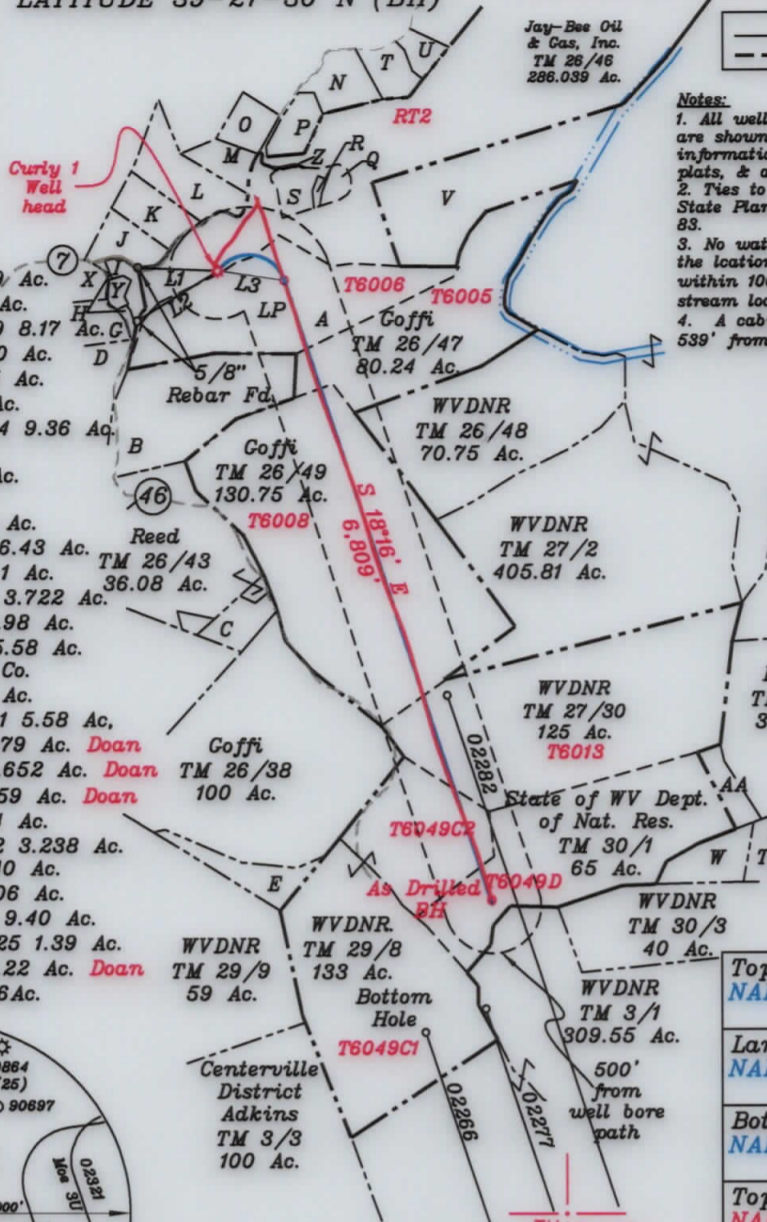
Jay-Bee Oil & Gas, Inc.  
TM 26/46  
286.039 Ac.



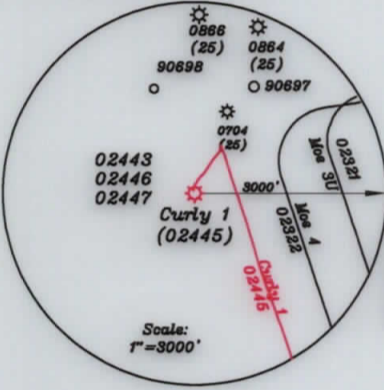
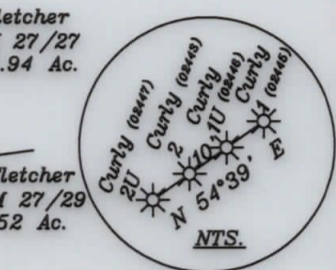
- Notes:
1. All wells within 500' of the horizontal leg are shown on this plat based upon information taken from DEP mapping, well plats, & aerial photos.
  2. Ties to wells and corners are based on State Plane Grid North-WV North Zone NAD 83.
  3. No water wells were found within 250' of the location. No perennial stream is located within 100' of LOD. No producing trout stream located within 300' of LOD.
  4. A cabin bears N30°13'W at a distance of 539' from the center of the pad.

- A- Coffi TM 26-45 52.9 Ac.
- B- Coffi TM 26/44 39 Ac.
- C- Reed et al TM 26/39 8.17 Ac.
- D- Keller TM 26/4 16.20 Ac.
- E- WVDNR TM 29/7 7.5 Ac.
- F- Reed TM 26/42 13 Ac.
- G- Westbrook TM 26/19.4 9.36 Ac.
- H- Jay Bee Oil & Gas TM 26/19.9 0.796 Ac.
- I- Jay Bee Oil & Gas TM 26/46.24 2.369 Ac.
- J- Walton TM 26/46.11 6.43 Ac.
- K- Kanz TM 26/46.4 8.1 Ac.
- L- Patera TM 26/46.15 3.722 Ac.
- M- Ison TM 26/46.10 4.98 Ac.
- N- Patera TM 26/46.7 5.58 Ac.
- O- Jay-Bee Production Co. TM 26/46.16 5.094 Ac.
- P- Shrader TM 26/46.1 5.58 Ac.
- Q- Peek TM 26/46.8 2.079 Ac. Doan
- R- Peek TM 26/46.20 0.652 Ac. Doan
- S- Peek TM 26/46.19 4.59 Ac. Doan
- T- Kanz TM 26/46.3 5.4 Ac.
- U- Holliday TM 26/46.12 3.238 Ac.
- V- Coffi TM 26/46.25 40 Ac.
- W- WVDNR TM 30/3 11.06 Ac.
- X- Palmer TM 26/19.11 9.40 Ac.
- Y- Coleman TM 26/46.25 1.39 Ac.
- Z- Peek TM 26/46.21 0.22 Ac. Doan
- AA - WVDNR TM 30/2 6Ac.

NORTH



BH 7 1/2'



NUMBER	DIRECTION	DISTANCE
L1	N88°53'E	808'
L2	N62°41'E	841'
L3	S77°58'E	730'

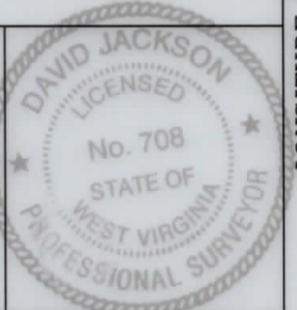
Top Hole	NAD 83 (Meters)-4368260.7N, 508851.8 E
Landing Point	NAD 83 (Meters)-4368247.8N, 509058.3 E
Bottom Hole	NAD 83 (Meters)-4366257.3N, 509750.1 E
Top Hole	NAD 83 (Meters)-4368260.7N, 508851.8 E
Landing Point	NAD 83 (Meters)-4368217.9N, 509070.2 E
Bottom Hole	NAD 83 (Meters)-4366258.8N, 509753.5 E

(+) DENOTES LOCATION OF WELL ON UNITED STATES TOPOGRAPHIC MAPS

FILE NO. \_\_\_\_\_  
DRAWING NO. 1  
SCALE 1" = 2000'  
MINIMUM DEGREE OF ACCURACY 1 in 200  
PROVEN SOURCE OF ELEVATION GPS  
submeter unit

I THE UNDERSIGNED, HEREBY CERTIFY THAT THIS PLAT IS CORRECT TO THE BEST OF MY KNOWLEDGE AND BELIEF AND SHOWS ALL THE INFORMATION REQUIRED BY LAW AND THE RULES ISSUED AND PRESCRIBED BY THE DEPARTMENT OF ENVIRONMENTAL PROTECTION.

(SIGNED) David L Jackson  
R.P.E. \_\_\_\_\_ P.S. 708



STATE OF WEST VIRGINIA  
Division of Environmental Protection  
OFFICE OF OIL AND GAS

DATE October 02, 2019  
OPERATOR'S WELL NO. Curly 1  
API WELL NO. \_\_\_\_\_

WELL TYPE: OIL GAS LIQUID INJECTION \_\_\_\_\_ WASTE DISPOSAL \_\_\_\_\_  
(IF "GAS") PRODUCTION X STORAGE \_\_\_\_\_ DEEP \_\_\_\_\_ SHALLOW X

LOCATION: ELEVATION 1,124.8' WATER SHED Middle Island Creek  
DISTRICT Ellsworth COUNTY Tyler  
QUADRANGLE Middlebourne 7 1/2'

SURFACE OWNER Jay-Bee Oil & Gas Inc. ACREAGE 286.039 Ac.  
OIL & GAS ROYALTY OWNER Ridgetop Capital LP, & Ridgetop Capital II, LP PLEASE ACREAGE 286.039 Ac.  
LEASE NO. RT2

PROPOSED WORK: DRILL \_\_\_\_\_ CONVERT \_\_\_\_\_ REDRILL \_\_\_\_\_ FRACTURE OR  
STIMULATE \_\_\_\_\_ PLUG OFF OLD FORMATION \_\_\_\_\_ PERFORATE NEW  
FORMATION \_\_\_\_\_ OTHER PHYSICAL CHANGE IN WELL (SPECIFY) As Drilled

PLUG AND ABANDON \_\_\_\_\_ CLEAN OUT AND REPLUG \_\_\_\_\_  
TARGET FORMATION Marcellus ESTIMATED DEPTH TVD = 6,600' TMD = 14,056'  
WELL OPERATOR Jay-Bee Oil & Gas, Inc. DESIGNATED AGENT Randy Broda  
ADDRESS 60 Walnut Avenue, Suite 190, Clark, NJ 07066 ADDRESS 3570 Shields Hill Rd., Cairo, WV 26337

LONGITUDE 80-52-30 W Bottom Hole 4,555' Top Hole 13,159'

LONGITUDE 80-52-30 N