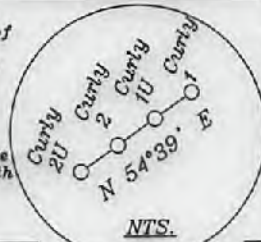
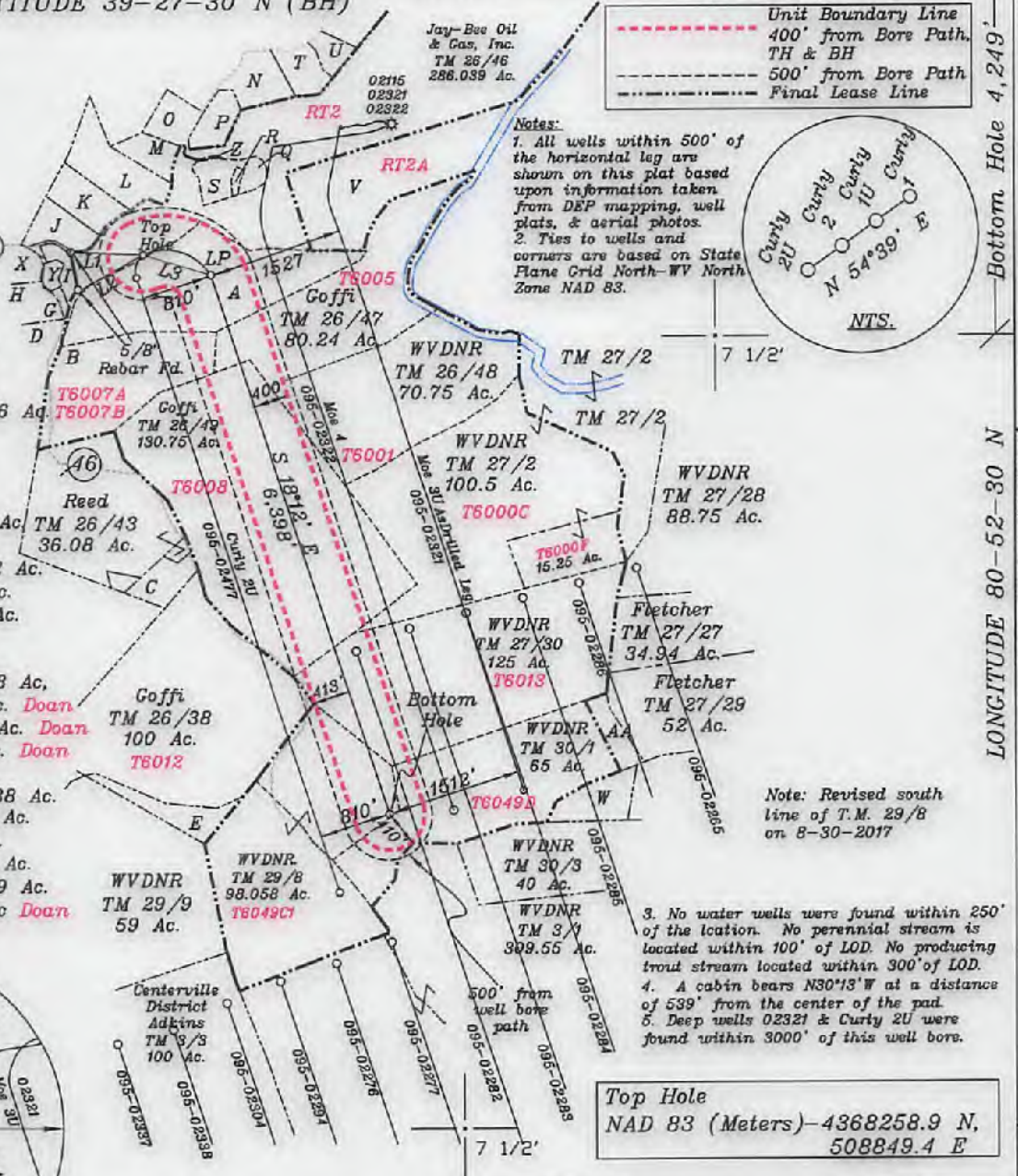


LATITUDE 39-30-00 N (TH)
LATITUDE 39-27-30 N (BH)

Bottom Hole 3,387'

References
24" Red Oak 20" White Ash
N70°39'E 518.1'
Location Curly 1U NTS

- A- Goffi TM 26-45 52.9 Ac.
- B- Goffi TM 26/44 39 Ac.
- C- Reed et al TM 26/39 8.17 Ac.
- D- Keller TM 26/4 16.20 Ac.
- E- WVDNR TM 29/7 7.5 Ac.
- F- Reed TM 26/42 13 Ac.
- G- Westbrook TM 26/19.4 9.36 Ac.
- H- Jay Bee Oil & Gas TM 26/19.9 0.796 Ac.
- I- Jay Bee Oil & Gas TM 26/46.24 2.369 Ac.
- J- Walton TM 26/46.11 6.43 Ac.
- K- Kanz TM 26/46.4 8.1 Ac.
- L- Patera TM 26/46.15 3.722 Ac.
- M- Ison TM 26/46.10 4.98 Ac.
- N- Patera TM 26/46.7 5.58 Ac.
- O- Jay-Bee Production Co. TM 26/46.16 5.094 Ac.
- P- Shrader TM 26/46.1 5.58 Ac.
- Q- Peek TM 26/46.8 2.079 Ac.
- R- Peek TM 26/46.20 0.652 Ac.
- S- Peek TM 26/46.19 4.59 Ac.
- T- Kanz TM 26/46.3 5.4 Ac.
- U- Holliday TM 26/46.12 3.238 Ac.
- V- Coffi TM 26/46.25 40.25 Ac.
- W- WVDNR TM 30/3 11.06 Ac.
- X- Palmer TM 26/19.11 9.40 Ac.
- Y- Coleman TM 26/46.25 1.39 Ac.
- Z- Peek TM 26/46.21 0.22 Ac.
- AA- WVDNR TM 30/2 6 Ac.



Notes:
1. All wells within 500' of the horizontal lag are shown on this plat based upon information taken from DEP mapping, well plats, & aerial photos.
2. Ties to wells and corners are based on State Plane Grid North-WV North Zone NAD 83.

Note: Revised south line of T.M. 29/8 on 8-30-2017

3. No water wells were found within 250' of the location. No perennial stream is located within 100' of LOD. No producing trout stream located within 300' of LOD.
4. A cabin bears N30°13'W at a distance of 539' from the center of the pad.
5. Deep wells 02321 & Curly 2U were found within 3000' of this well bore.

Top Hole
NAD 83 (Meters)-4368258.9 N,
508849.4 E

NUMBER	DIRECTION	DISTANCE
L1	S89°17'W	800'
L2	S62°47'W	831'
L3	S73°23'E	798'

Landing Point
NAD 83 (Meters)-4368193.2 N, 509083.6 E

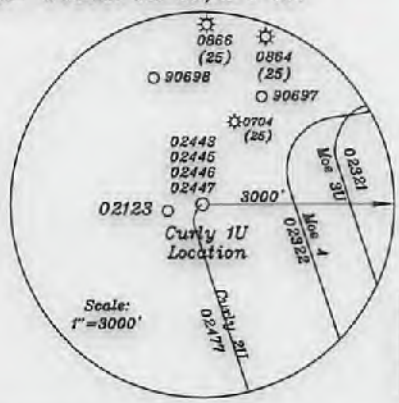
Bottom Hole
NAD 83 (Meters)-4366351.8 N, 509723.6 E

NORTH

LONGITUDE 80-52-30 N

Top Hole 13,164'

Bottom Hole 4,249'



(+) DENOTES LOCATION OF WELL ON UNITED STATES TOPOGRAPHIC MAPS

FILE NO. _____
DRAWING NO. 1
SCALE 1" = 2000'
MINIMUM DEGREE OF ACCURACY 1 in 200
PROVEN SOURCE OF ELEVATION GPS
submeter unit

I THE UNDERSIGNED, HEREBY CERTIFY THAT THIS PLAT IS CORRECT TO THE BEST OF MY KNOWLEDGE AND BELIEF AND SHOWS ALL THE INFORMATION REQUIRED BY LAW AND THE RULES ISSUED AND PRESCRIBED BY THE DEPARTMENT OF ENVIRONMENTAL PROTECTION.
(SIGNED) David L. Jackson
R.P.E. _____ P.S. 708



STATE OF WEST VIRGINIA
Division of Environmental Protection
OFFICE OF OIL AND GAS

DATE August 30, 2017
OPERATOR'S WELL NO. Curly 1U
API WELL NO. _____

WELL TYPE: OIL GAS LIQUID INJECTION _____ WASTE DISPOSAL _____
(IF "GAS") PRODUCTION X STORAGE _____ DEEP X SHALLOW _____

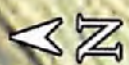
LOCATION: ELEVATION 1,123.38' WATER SHED Middle Island Creek
DISTRICT Ellsworth COUNTY Tyler
QUADRANGLE Middlebourne 7 1/2'

SURFACE OWNER Jay-Bee Oil & Gas Inc. ACREAGE 286.039 Ac.
OIL & GAS ROYALTY OWNER Ridgetop Capital LP, & Ridgetop Capital II, LP PLEASE ACREAGE 286.039 Ac.
LEASE NO. RT2

PROPOSED WORK: DRILL X CONVERT _____ REDRILL _____ FRACTURE OR STIMULATE X PLUG OFF OLD FORMATION _____ PERFORATE NEW FORMATION X OTHER PHYSICAL CHANGE IN WELL (SPECIFY) _____

PLUG AND ABANDON _____ CLEAN OUT AND REPLUG _____
TARGET FORMATION Point Pleasant ESTIMATED DEPTH 11,113.5'-TVD 18,795.5'-TMD
WELL OPERATOR Jay-Bee Oil & Gas, Inc. DESIGNATED AGENT Randy Broda
ADDRESS 1720 Route 22 E, Union, NJ 07083 ADDRESS 3570 Shields Hill Rd., Cairo, WV 26337

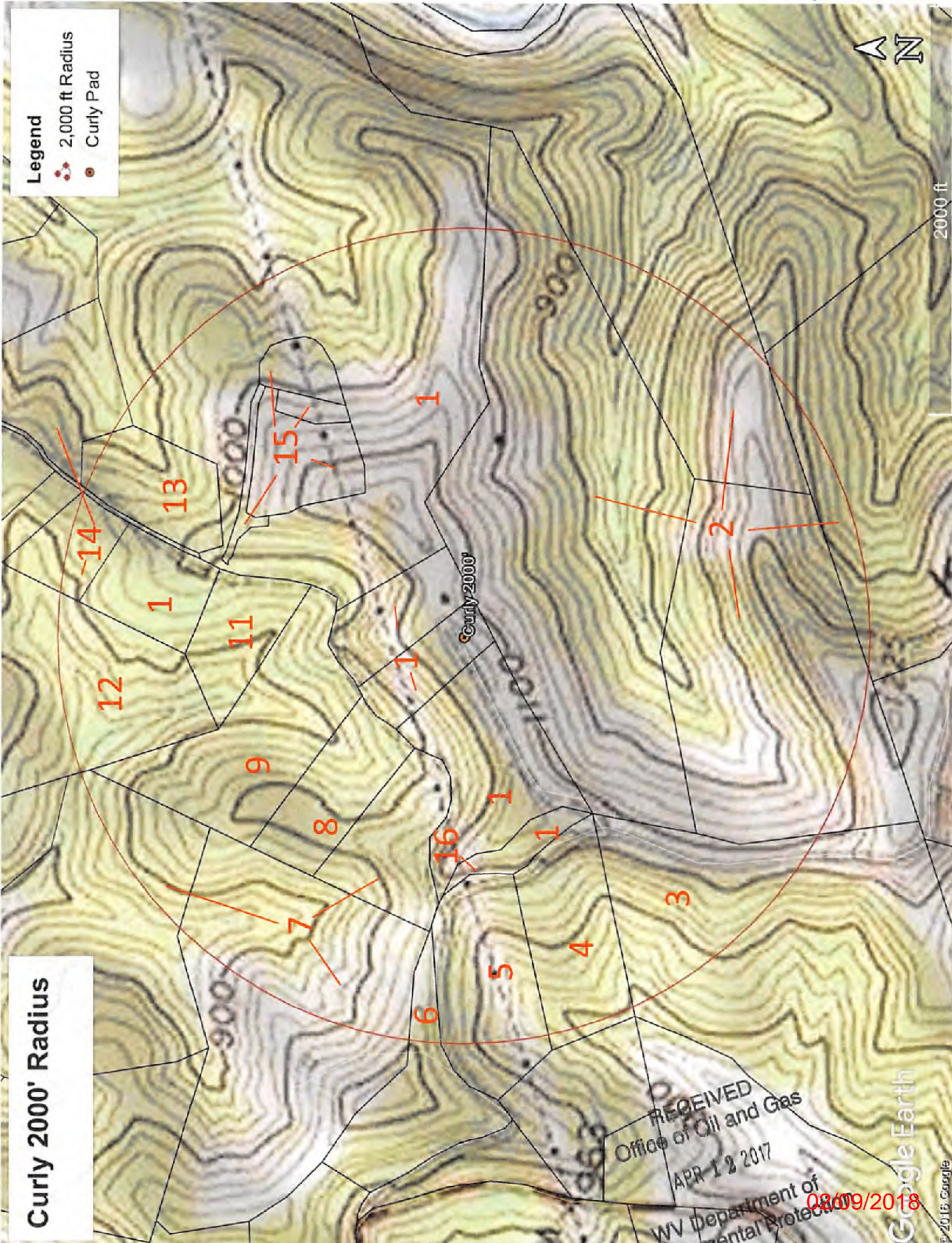
02/09/2018



Legend

- 2,000 ft Radius
- Curly Pad

Curly 2000' Radius



RECEIVED
Office of Oil and Gas
APR 12 2017

WV Department of
Environmental Protection
08/09/2018