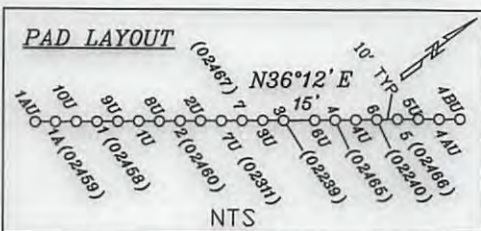
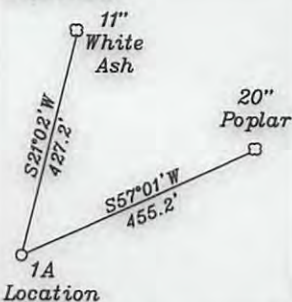


References



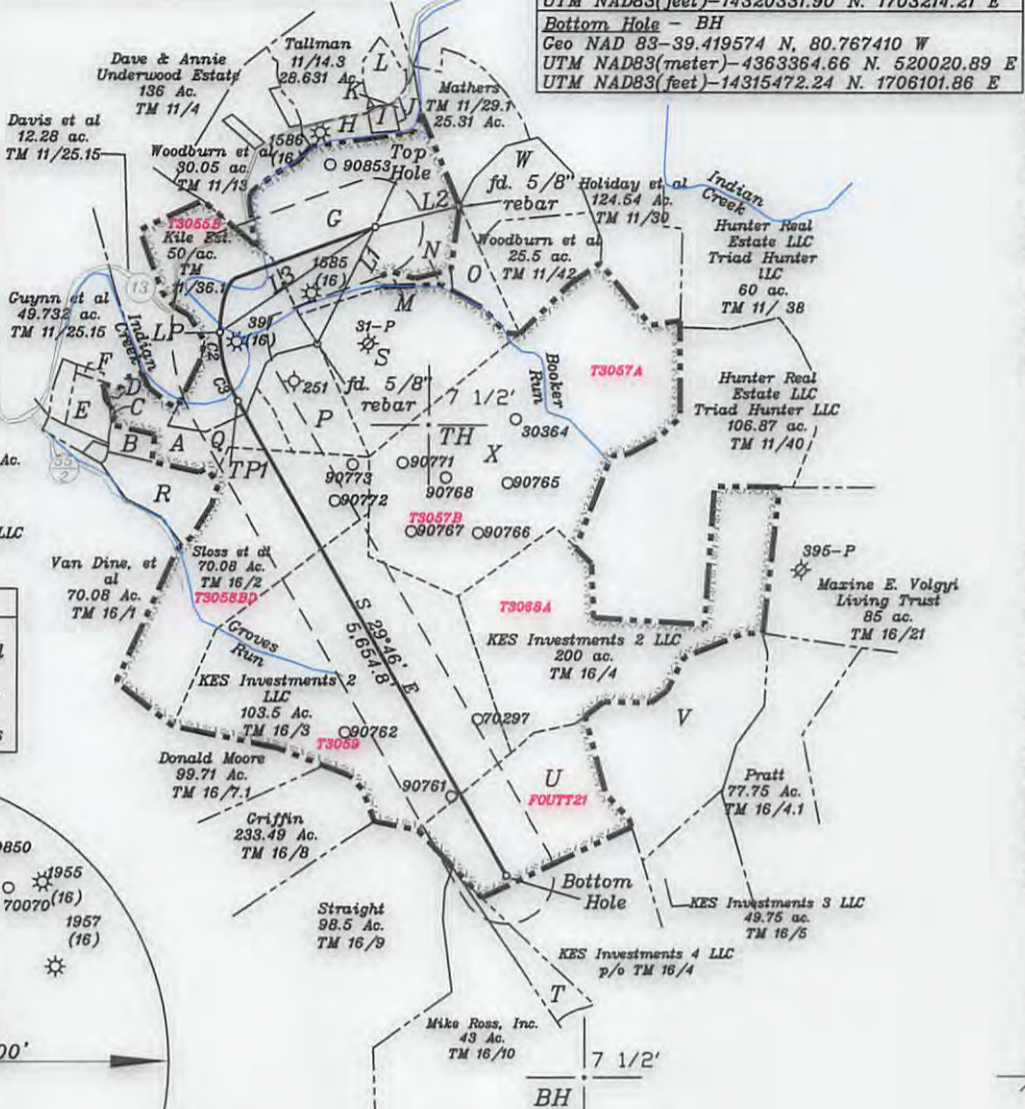
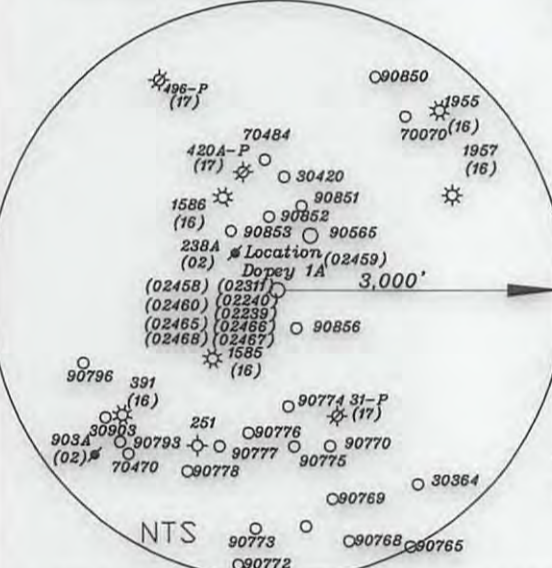
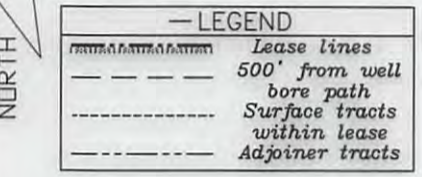
**Top Hole - TH**  
 Geo NAD 83-39.437964 N, 80.772641 W  
 UTM NAD83(meter)-4365404.42 N, 519565.46 E  
 UTM NAD83(feet)-14322164.34 N, 1704607.69 E

**Landing Point - LP**  
 Geo NAD 83-39.434896 N, 80.778298 W  
 UTM NAD83(meter)-4365062.70 N, 519079.53 E  
 UTM NAD83(feet)-14321043.22 N, 1703013.43 E

**Turning Point - TPI**  
 Geo NAD 83-39.432941 N, 80.777593 W  
 UTM NAD83(meter)-4364845.89 N, 519140.73 E  
 UTM NAD83(feet)-14320331.90 N, 1703214.21 E

**Bottom Hole - BH**  
 Geo NAD 83-39.419574 N, 80.767410 W  
 UTM NAD83(meter)-4363364.66 N, 520020.89 E  
 UTM NAD83(feet)-14315472.24 N, 1706101.86 E

- A- Davis TM 11/25.15 12.28 Ac.
- B- Davis TM 11/25.7 3.032 Ac.
- C- Cramer TM 11/25.16 0.14 Ac.
- D- Davis TM 11/25.15 12.28 Ac.
- E- Cramer TM 11/25.10 2.44 Ac.
- F- Cramer TM 11/25.14 0.54 Ac.
- G- Montgomery TM 11/27 65 Ac. T3055A
- H- Montgomery TM 11/14 2.18 Ac. T3052A
- I- Vincent TM 11/14.4 1.82 Ac. T3052A
- J- Riter (Life) TM 11/29 1.63 Ac.
- K- Stillson TM 11/28 0.37 Ac.
- L- Tallman TM 11/14.5 5.135 Ac. T3052A
- M- Woodburn et al TM 11/45 0.755 Ac.
- N- Woodburn et al TM 11/44 1.5 Ac.
- O- Woodburn et al TM 11/44 6.75 Ac.
- P- Davis TM 11/41 18.82 Ac.
- Q- Davis TM 11/25.18 10 Ac. T3054D
- R- Yeater TM 11/25.12 13.75 Ac.
- S- Kile estate TM 11/36 57 Ac.
- T- Straight TM 16/11 12 Ac.
- U- KES Investments 3 LLC TM 16/4 49.13 Ac.
- V- KES Investments 3 LLL TM 16/4 Residue of 78.4 Ac.
- W- Woodburn et al TM 11/43 35 Ac.
- X- Hunter Real Estate LLC, Triad Hunter LLC TM 11/37 147 Ac.



- Notes:**
- All wells within 500' of the horizontal leg are shown on this plat based upon information taken from DEP mapping, well plats, & aerial photos.
  - Ties to wells and corners are based on State Plane Crd North-WV North Zone NAD 83.
  - No water wells were found within 250' of the well location. A house was found N55°54'W 614.3' from the center of the well pad.

NUMBER	DIRECTION	DISTANCE
L1	N 26°07' E	1,3568'
L2	S 76°15' W	898.7'
L3	S 55°50' W	1,949.7'

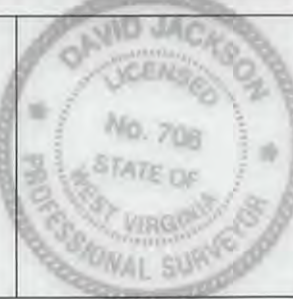
NUMBER	CHORD	DIRECTION	RADIUS	ARC LENGTH	CHORD LENGTH
C2	S06°42' E	1,432.41'	342.19'	341.98'	
C3	S27°39' E	1,432.37'	405.64'	404.28'	

(+) DENOTES LOCATION OF WELL ON UNITED STATES TOPOGRAPHIC MAPS

FILE NO. \_\_\_\_\_  
 DRAWING NO. 1  
 SCALE 1" = 2000'  
 MINIMUM DEGREE OF ACCURACY 1 in 200  
 PROVEN SOURCE OF ELEVATION GPS  
submeter unit

I THE UNDERSIGNED, HEREBY CERTIFY THAT THIS PLAT IS CORRECT TO THE BEST OF MY KNOWLEDGE AND BELIEF AND SHOWS ALL THE INFORMATION REQUIRED BY LAW AND THE RULES ISSUED AND PRESCRIBED BY THE DEPARTMENT OF ENVIRONMENTAL PROTECTION.

(SIGNED) David L Jackson  
 R.P.E. \_\_\_\_\_ P.S. 708



STATE OF WEST VIRGINIA  
 Division of Environmental Protection  
 OFFICE OF OIL AND GAS

DATE February 22, 2018  
 OPERATOR'S WELL NO. Dopey 1A  
 API WELL NO. 47-095-02459 MDD  
 STATE COUNTY PERMIT H6A

WELL TYPE: OIL GAS X LIQUID INJECTION WASTE DISPOSAL \_\_\_\_\_  
 (IF "GAS") PRODUCTION X STORAGE DEEP SHALLOW X

LOCATION: ELEVATION 910.7' WATER SHED Indian Creek - Outlet Middle Island Creek (HUC-10)  
 DISTRICT McElroy COUNTY Tyler  
 QUADRANGLE Shirley 7 1/2'

SURFACE OWNER John & Patty Montgomery ACREAGE 65 ac 03/02/2018  
 OIL & GAS ROYALTY OWNER & LEASE NO. See Above for Lease Numbers

PROPOSED WORK: DRILL X CONVERT \_\_\_\_\_ DRILL DEEPER \_\_\_\_\_ REDRILL \_\_\_\_\_ FRACTURE OR STIMULATE X PLUG OFF OLD FORMATION \_\_\_\_\_ PERFORATE NEW FORMATION X OTHER PHYSICAL CHANGE IN WELL (SPECIFY) \_\_\_\_\_

PLUG AND ABANDON \_\_\_\_\_ CLEAN OUT AND REPLUG \_\_\_\_\_  
 TARGET FORMATION Marcellus ESTIMATED DEPTH TVD = 6,630'; TMD = 15,482'  
 WELL OPERATOR Jay Bee Oil & Gas, Inc. DESIGNATED AGENT Randy Broda  
 ADDRESS 1720 Rt. 22, East Union, NJ 07083 ADDRESS 3570 Shields Hill Road, Cairo, WV 26337