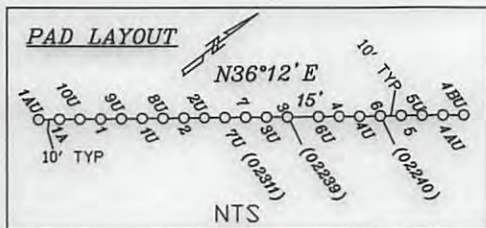
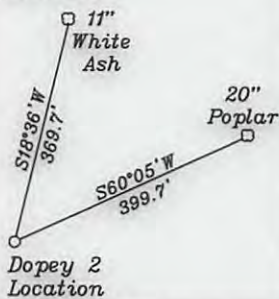
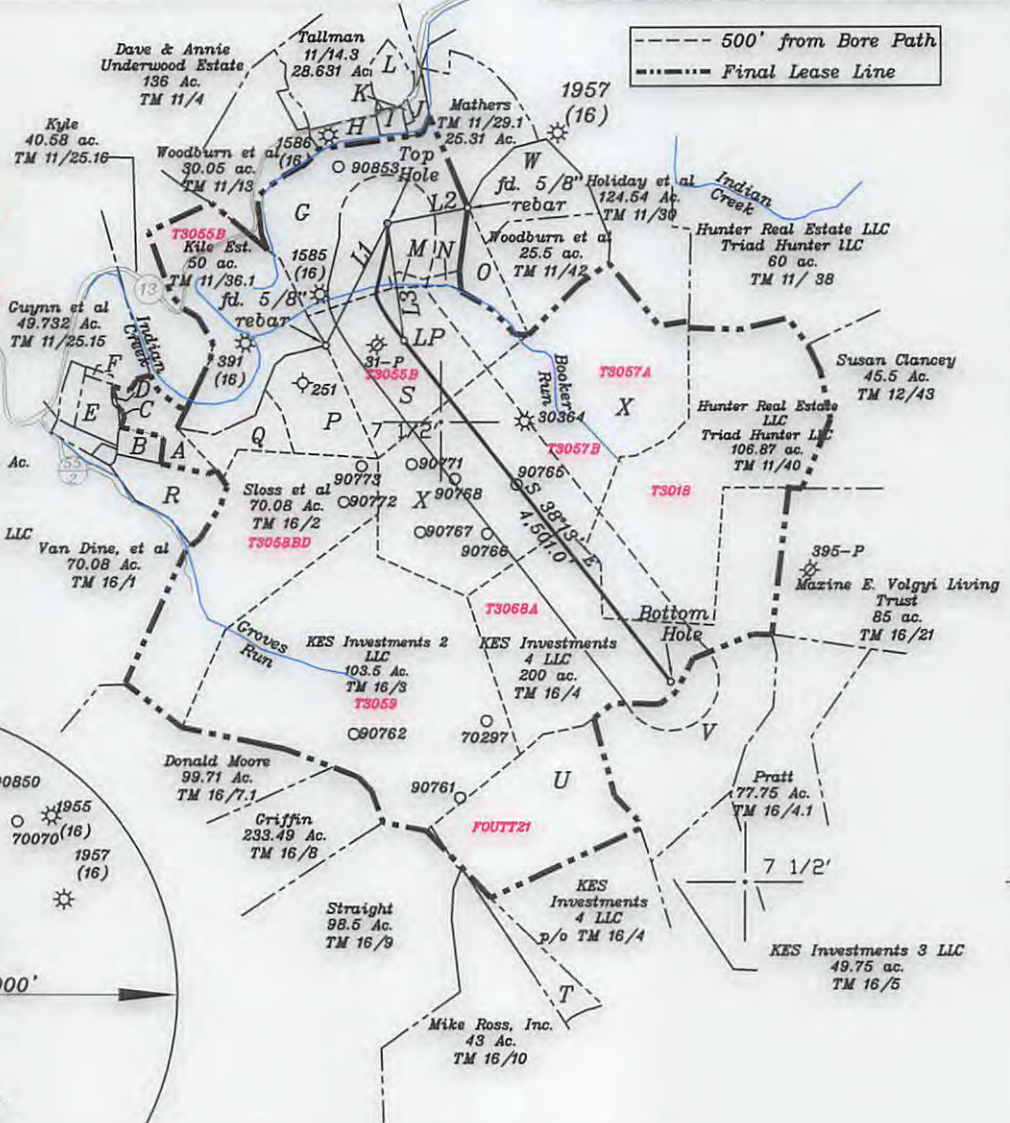


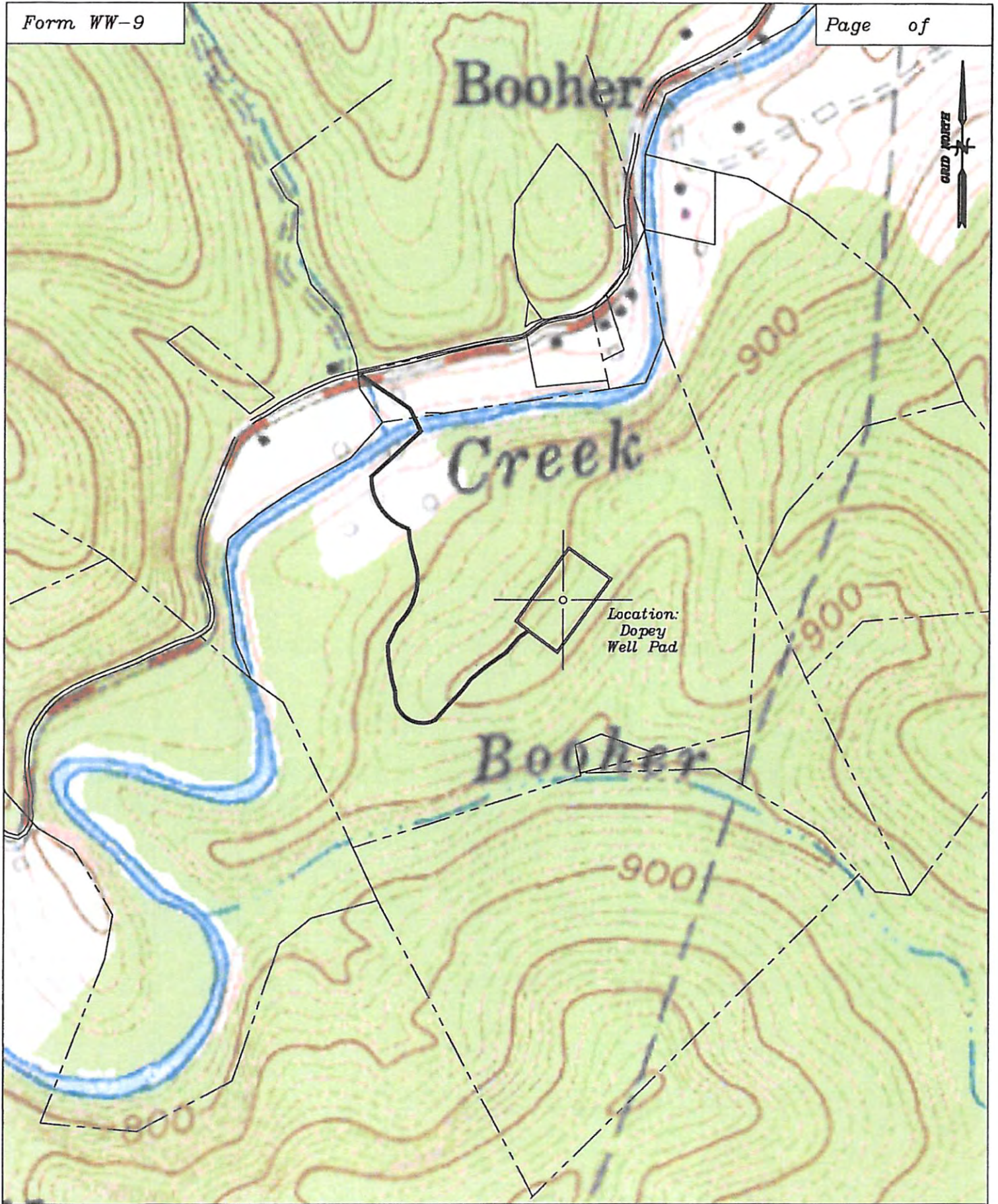
References



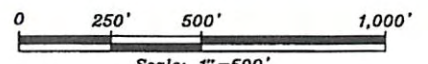
Top Hole		
Geo NAD 83-39.438098 N, 80.772518 W		
UTM NAD83(meter)-4365419.35 N. 519576.01 E		
UTM NAD83(feet)-14322213.32 N. 1704642.30 E		
Landing Point		
Geo NAD 83-39.434771 N, 80.771842 W		
UTM NAD83(meter)-4365050.20 N. 519635.10 E		
UTM NAD83(feet)-14321002.21 N. 1704836.14 E		
Bottom Hole		
Geo NAD 83-39.425171 N, 80.761809 W		
UTM NAD83(meter)-4363987.10 N. 520501.40 E		
UTM NAD83(feet)-14317514.34 N. 1707678.34 E		

- A- L. Davis TM 11/25.15 12.28 Ac.
- B- T. Davis TM 11/25.7 3.032 Ac.
- C- Cramer TM 11/25.16 0.14 Ac.
- D- L. Davis TM 11/25.15 12.28 Ac.
- E- Cramer TM 11/25.10 2.44 Ac.
- F- Cramer TM 11/25.14 0.54 Ac.
- G- Montgomery TM 11/27 65 Ac. T3055A
- H- Montgomery TM 11/14 2.18 Ac. T3052A
- I- Vincent TM 11/14.4 1.82 Ac. T3052A
- J- Riter (Life) TM 11/29 1.63 Ac.
- K- Stillson TM 11/28 0.37 Ac.
- L- Tallman TM 11/14.5 5.135 Ac. T3052A
- M- Woodburn et al TM 11/45 0.755 Ac.
- N- Woodburn et al TM 11/44 1.5 Ac.
- O- Woodburn et al TM 11/44 6.75 Ac.
- P- Davis TM 11/41 18.82 Ac.
- Q- Davis TM 11/25.18 10 Ac. T3054D
- R- Yeater TM 11/25.12 13.75 Ac.
- S- Kile estate TM 11/36 57 Ac.
- T- Straight TM 16/11 12 Ac.
- U- KES Investments 3 LLC TM 16/4 49.13 Ac.
- V- KES Investments 3 LLL TM 16/4 Residue of 78.4 Ac.
- W- Woodburn et al TM 11/43 35 Ac.
- X- Hunter Real Estate LLC, Triad Hunter LLC TM 11/37 147 Ac.





Well: Dopey Well Pad
 Quad: Shirley 7 1/2'
 District: McElroy
 County: Tyler



09/15/2017