

LATITUDE 39°27'30"

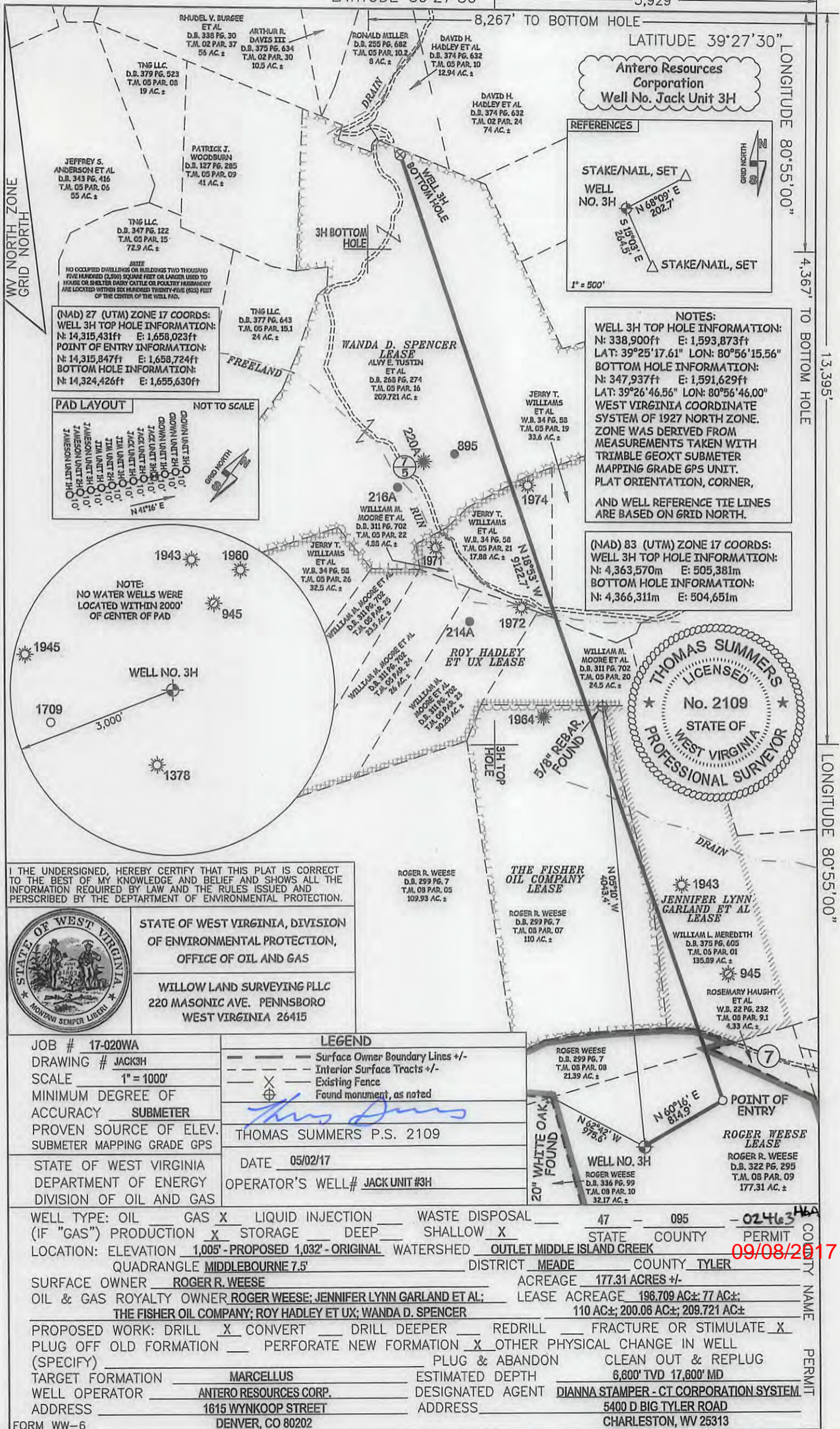
5,929'

LATITUDE 39°27'30"

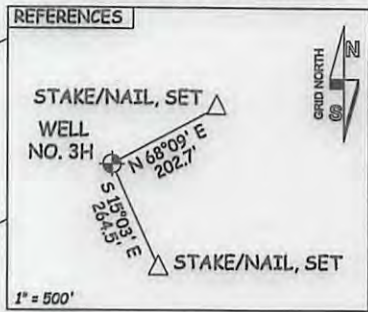
LONGITUDE 80°55'00"

13,395'

LONGITUDE 80°55'00"



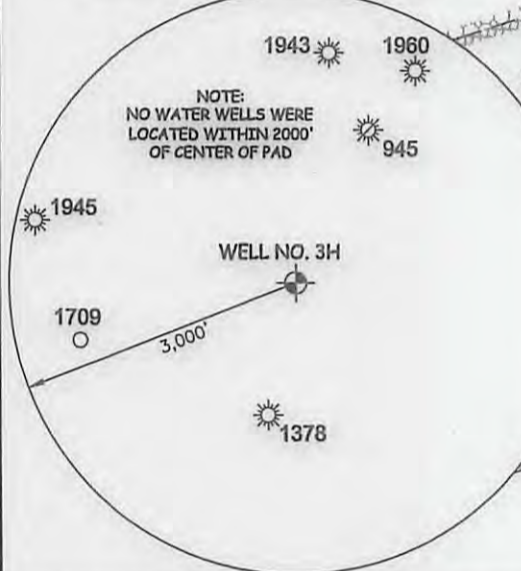
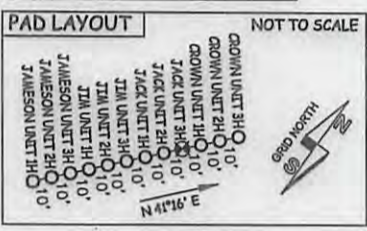
**Antero Resources Corporation**  
Well No. Jack Unit 3H



**NOTES:**  
WELL 3H TOP HOLE INFORMATION:  
N: 338,900ft E: 1,593,873ft  
LAT: 39°25'17.61" LON: 80°56'15.56"  
BOTTOM HOLE INFORMATION:  
N: 347,937ft E: 1,591,629ft  
LAT: 39°26'46.56" LON: 80°56'46.00"  
WEST VIRGINIA COORDINATE SYSTEM OF 1927 NORTH ZONE. ZONE WAS DERIVED FROM MEASUREMENTS TAKEN WITH TRIMBLE GEOXT SUBMETER MAPPING GRADE GPS UNIT. PLAT ORIENTATION, CORNER, AND WELL REFERENCE TIE LINES ARE BASED ON GRID NORTH.

(NAD) 83 (UTM) ZONE 17 COORDS:  
WELL 3H TOP HOLE INFORMATION:  
N: 4,363,570m E: 505,381m  
BOTTOM HOLE INFORMATION:  
N: 4,366,311m E: 504,651m

(NAD) 27 (UTM) ZONE 17 COORDS:  
WELL 3H TOP HOLE INFORMATION:  
N: 14,315,431ft E: 1,658,023ft  
POINT OF ENTRY INFORMATION:  
N: 14,315,847ft E: 1,658,724ft  
BOTTOM HOLE INFORMATION:  
N: 14,324,426ft E: 1,655,630ft



I THE UNDERSIGNED, HEREBY CERTIFY THAT THIS PLAT IS CORRECT TO THE BEST OF MY KNOWLEDGE AND BELIEF AND SHOWS ALL THE INFORMATION REQUIRED BY LAW AND THE RULES ISSUED AND PERSCRIBED BY THE DEPARTMENT OF ENVIRONMENTAL PROTECTION.



STATE OF WEST VIRGINIA, DIVISION OF ENVIRONMENTAL PROTECTION, OFFICE OF OIL AND GAS

WILLOW LAND SURVEYING PLLC  
220 MASONIC AVE. PENNSBORO WEST VIRGINIA 26415

JOB # 17-020WA  
DRAWING # JACK3H  
SCALE 1" = 1000'  
MINIMUM DEGREE OF ACCURACY SUBMETER  
PROVEN SOURCE OF ELEV. SUBMETER MAPPING GRADE GPS

STATE OF WEST VIRGINIA DEPARTMENT OF ENERGY DIVISION OF OIL AND GAS

**LEGEND**

- Surface Owner Boundary Lines +/-
- Interior Surface Tracts +/-
- Existing Fence
- Found monument, as noted

*Thomas Summers*

THOMAS SUMMERS P.S. 2109

DATE 05/02/17

OPERATOR'S WELL# JACK UNIT #3H

WELL TYPE: OIL \_\_\_ GAS X LIQUID INJECTION \_\_\_ WASTE DISPOSAL \_\_\_ 47 - 095 - 02463 HBA

(IF "GAS") PRODUCTION X STORAGE \_\_\_ DEEP \_\_\_ SHALLOW X STATE COUNTY PERMIT COUNTY NAME

LOCATION: ELEVATION 1,005' - PROPOSED 1,032' - ORIGINAL WATERSHED OUTLET MIDDLE ISLAND CREEK 09/08/2017

QUADRANGLE MIDDLEBOURNE 7.5' DISTRICT MEADE COUNTY TYLER

SURFACE OWNER ROGER R. WEESE ACREAGE 177.31 ACRES +/-

OIL & GAS ROYALTY OWNER ROGER WEESE; JENNIFER LYNN GARLAND ET AL; LEASE ACREAGE 196.709 AC±; 77 AC±; THE FISHER OIL COMPANY; ROY HADLEY ET UX; WANDA D. SPENCER 110 AC±; 200.06 AC±; 209.721 AC±

PROPOSED WORK: DRILL X CONVERT \_\_\_ DRILL DEEPER \_\_\_ REDRILL \_\_\_ FRACTURE OR STIMULATE X

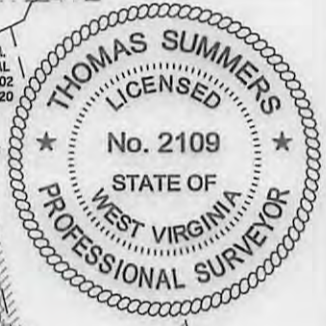
PLUG OFF OLD FORMATION \_\_\_ PERFORATE NEW FORMATION X OTHER PHYSICAL CHANGE IN WELL (SPECIFY) PLUG & ABANDON CLEAN OUT & REPLUG

TARGET FORMATION MARCELLUS ESTIMATED DEPTH 6,600' TVD 17,600' MD

WELL OPERATOR ANTERO RESOURCES CORP. DESIGNATED AGENT DIANNA STAMPER - CT CORPORATION SYSTEM

ADDRESS 1615 WYNKOOP STREET ADDRESS 5400 D BIG TYLER ROAD CHARLESTON, WV 25313

FORM WW-6 DENVER, CO 80202



THE FISHER OIL COMPANY LEASE

JENNIFER LYNN GARLAND ET AL LEASE

WILLIAM L. MEREDITH D.B. 375 PG. 605 T.M. 05 PAR. 01 135.89 AC. ±

ROSEMARY HAUGHT ET AL W.B. 22 PG. 232 T.M. 08 PAR. 9.1 4.33 AC. ±

ROGER WEESE LEASE ROGER R. WEESE D.B. 322 PG. 295 T.M. 08 PAR. 09 177.31 AC. ±

ROGER WEESE D.B. 299 PG. 7 T.M. 08 PAR. 08 21.39 AC. ±

ROGER WEESE D.B. 336 PG. 99 T.M. 08 PAR. 10 32.17 AC. ±

ROGER R. WEESE D.B. 299 PG. 7 T.M. 08 PAR. 05 109.93 AC. ±

ROGER R. WEESE D.B. 299 PG. 7 T.M. 08 PAR. 07 110 AC. ±

WILLIAM M. MOORE ET AL D.B. 311 PG. 702 T.M. 05 PAR. 20 24.5 AC. ±

WILLIAM M. MOORE ET AL D.B. 311 PG. 702 T.M. 05 PAR. 21 17.88 AC. ±

WILLIAM M. MOORE ET AL D.B. 311 PG. 702 T.M. 05 PAR. 22 4.88 AC. ±

WILLIAM M. MOORE ET AL D.B. 311 PG. 702 T.M. 05 PAR. 23 30.25 AC. ±

WILLIAM M. MOORE ET AL D.B. 311 PG. 702 T.M. 05 PAR. 24 28 AC. ±

WILLIAM M. MOORE ET AL D.B. 311 PG. 702 T.M. 05 PAR. 25 23.5 AC. ±

WILLIAM M. MOORE ET AL D.B. 311 PG. 702 T.M. 05 PAR. 26 32.5 AC. ±

WILLIAM M. MOORE ET AL D.B. 311 PG. 702 T.M. 05 PAR. 27 32.5 AC. ±

WILLIAM M. MOORE ET AL D.B. 311 PG. 702 T.M. 05 PAR. 28 32.5 AC. ±

WILLIAM M. MOORE ET AL D.B. 311 PG. 702 T.M. 05 PAR. 29 32.5 AC. ±

WILLIAM M. MOORE ET AL D.B. 311 PG. 702 T.M. 05 PAR. 30 32.5 AC. ±

WILLIAM M. MOORE ET AL D.B. 311 PG. 702 T.M. 05 PAR. 31 32.5 AC. ±

WILLIAM M. MOORE ET AL D.B. 311 PG. 702 T.M. 05 PAR. 32 32.5 AC. ±

DAVID H. HADLEY ET AL D.B. 374 PG. 632 T.M. 05 PAR. 10 12.94 AC. ±

DAVID H. HADLEY ET AL D.B. 374 PG. 632 T.M. 02 PAR. 24 74 AC. ±

RONALD MILLER D.B. 255 PG. 682 T.M. 05 PAR. 10.2 8 AC. ±

ARTHUR R. DAVIS III D.B. 375 PG. 634 T.M. 02 PAR. 30 10.5 AC. ±

RHODEL V. BURGEE ET AL D.B. 338 PG. 30 T.M. 02 PAR. 37 56 AC. ±

PATRICK J. WOODBURN D.B. 127 PG. 285 T.M. 05 PAR. 09 41 AC. ±

TNG LLC D.B. 379 PG. 523 T.M. 05 PAR. 08 19 AC. ±

TNG LLC D.B. 347 PG. 122 T.M. 05 PAR. 15 72.9 AC. ±

TNG LLC D.B. 377 PG. 643 T.M. 05 PAR. 15.1 24 AC. ±

JERRY T. WILLIAMS ET AL W.B. 34 PG. 58 T.M. 05 PAR. 19 33.6 AC. ±

JERRY T. WILLIAMS ET AL W.B. 34 PG. 58 T.M. 05 PAR. 21 17.88 AC. ±

JERRY T. WILLIAMS ET AL W.B. 34 PG. 58 T.M. 05 PAR. 26 32.5 AC. ±

JERRY T. WILLIAMS ET AL W.B. 34 PG. 58 T.M. 05 PAR. 27 32.5 AC. ±

JERRY T. WILLIAMS ET AL W.B. 34 PG. 58 T.M. 05 PAR. 28 32.5 AC. ±

JERRY T. WILLIAMS ET AL W.B. 34 PG. 58 T.M. 05 PAR. 29 32.5 AC. ±

JERRY T. WILLIAMS ET AL W.B. 34 PG. 58 T.M. 05 PAR. 30 32.5 AC. ±

JERRY T. WILLIAMS ET AL W.B. 34 PG. 58 T.M. 05 PAR. 31 32.5 AC. ±

JERRY T. WILLIAMS ET AL W.B. 34 PG. 58 T.M. 05 PAR. 32 32.5 AC. ±

JERRY T. WILLIAMS ET AL W.B. 34 PG. 58 T.M. 05 PAR. 33 32.5 AC. ±

JERRY T. WILLIAMS ET AL W.B. 34 PG. 58 T.M. 05 PAR. 34 32.5 AC. ±

JERRY T. WILLIAMS ET AL W.B. 34 PG. 58 T.M. 05 PAR. 35 32.5 AC. ±

JERRY T. WILLIAMS ET AL W.B. 34 PG. 58 T.M. 05 PAR. 36 32.5 AC. ±

JERRY T. WILLIAMS ET AL W.B. 34 PG. 58 T.M. 05 PAR. 37 32.5 AC. ±

JERRY T. WILLIAMS ET AL W.B. 34 PG. 58 T.M. 05 PAR. 38 32.5 AC. ±

JERRY T. WILLIAMS ET AL W.B. 34 PG. 58 T.M. 05 PAR. 39 32.5 AC. ±

JERRY T. WILLIAMS ET AL W.B. 34 PG. 58 T.M. 05 PAR. 40 32.5 AC. ±

JERRY T. WILLIAMS ET AL W.B. 34 PG. 58 T.M. 05 PAR. 41 32.5 AC. ±

JERRY T. WILLIAMS ET AL W.B. 34 PG. 58 T.M. 05 PAR. 42 32.5 AC. ±

JERRY T. WILLIAMS ET AL W.B. 34 PG. 58 T.M. 05 PAR. 43 32.5 AC. ±

JERRY T. WILLIAMS ET AL W.B. 34 PG. 58 T.M. 05 PAR. 44 32.5 AC. ±

JERRY T. WILLIAMS ET AL W.B. 34 PG. 58 T.M. 05 PAR. 45 32.5 AC. ±

JERRY T. WILLIAMS ET AL W.B. 34 PG. 58 T.M. 05 PAR. 46 32.5 AC. ±

JERRY T. WILLIAMS ET AL W.B. 34 PG. 58 T.M. 05 PAR. 47 32.5 AC. ±

JERRY T. WILLIAMS ET AL W.B. 34 PG. 58 T.M. 05 PAR. 48 32.5 AC. ±

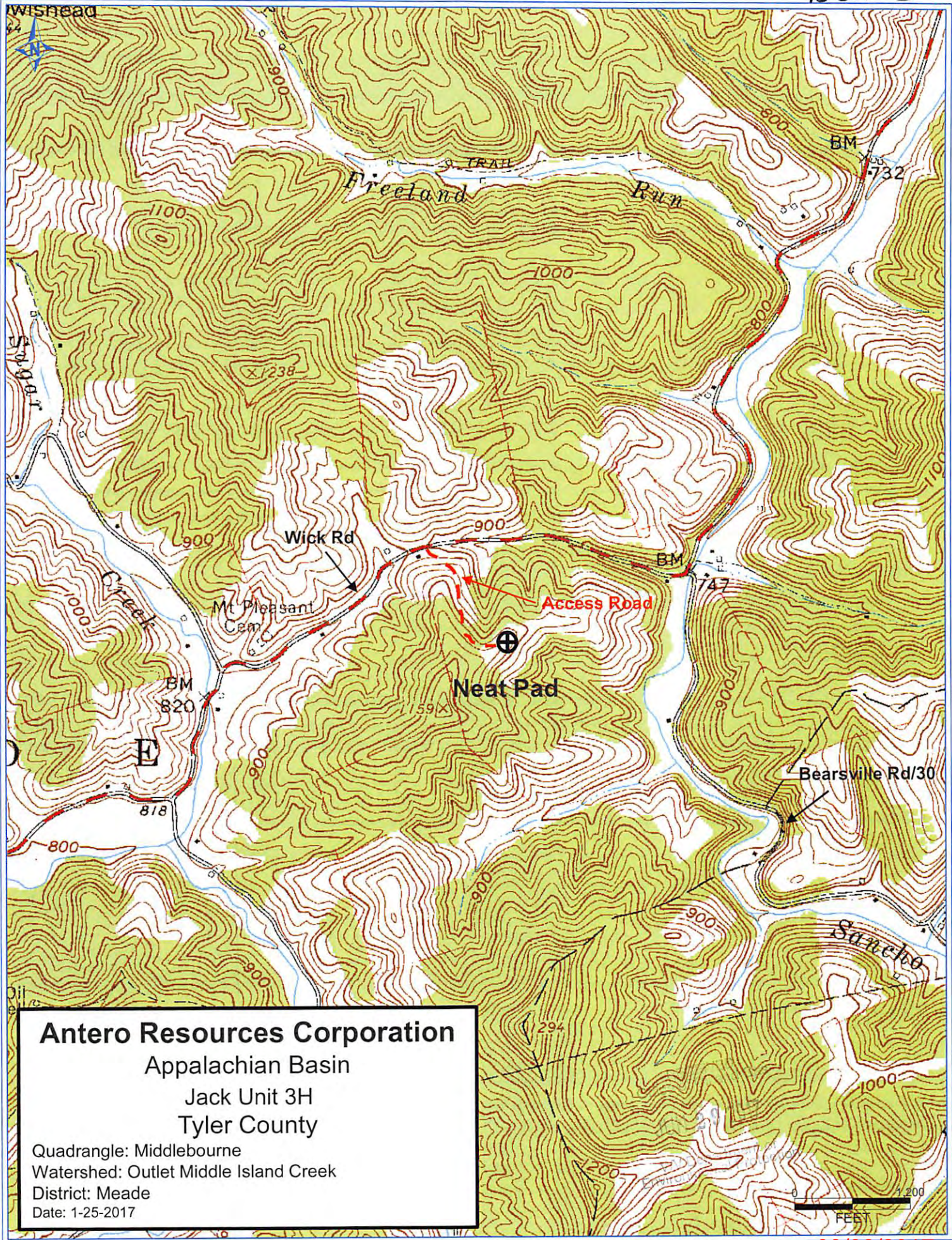
JERRY T. WILLIAMS ET AL W.B. 34 PG. 58 T.M. 05 PAR. 49 32.5 AC. ±

JERRY T. WILLIAMS ET AL W.B. 34 PG. 58 T.M. 05 PAR. 50 32.5 AC. ±

JERRY T. WILLIAMS ET AL W.B. 34 PG. 58 T.M. 05 PAR. 51 32.5 AC. ±

JERRY T. WILLIAMS ET AL W.B. 34 PG. 58 T.M. 05 PAR. 52 32.5 AC. ±





**Antero Resources Corporation**  
 Appalachian Basin  
 Jack Unit 3H  
 Tyler County

Quadrangle: Middlebourne  
 Watershed: Outlet Middle Island Creek  
 District: Meade  
 Date: 1-25-2017