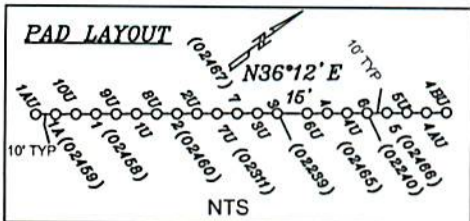
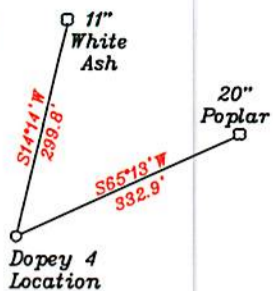
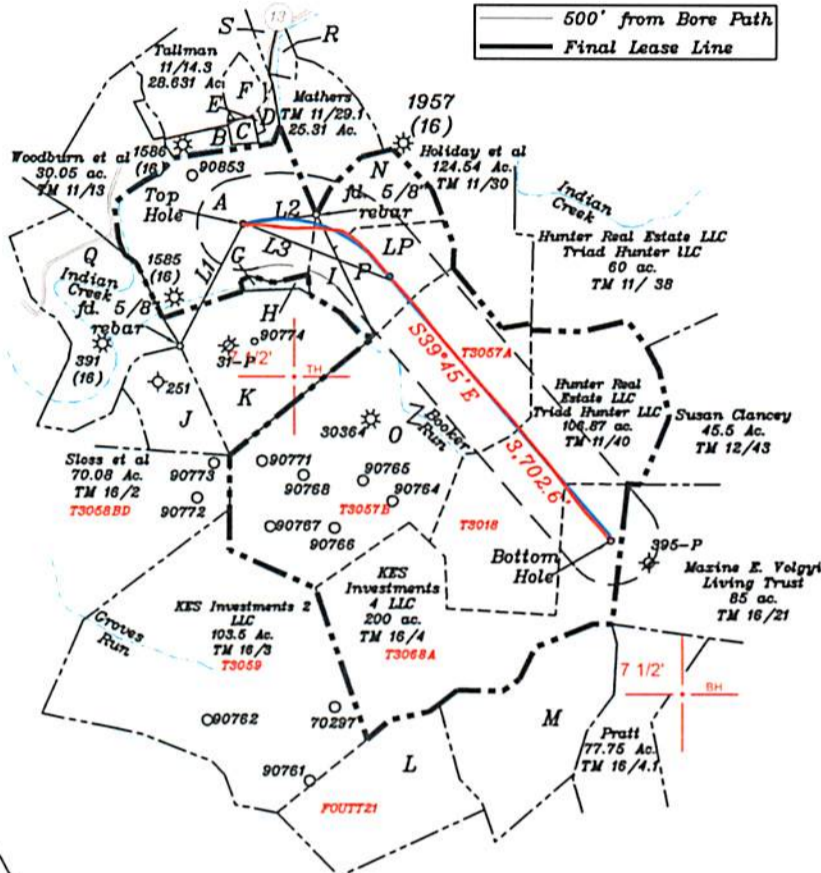


References

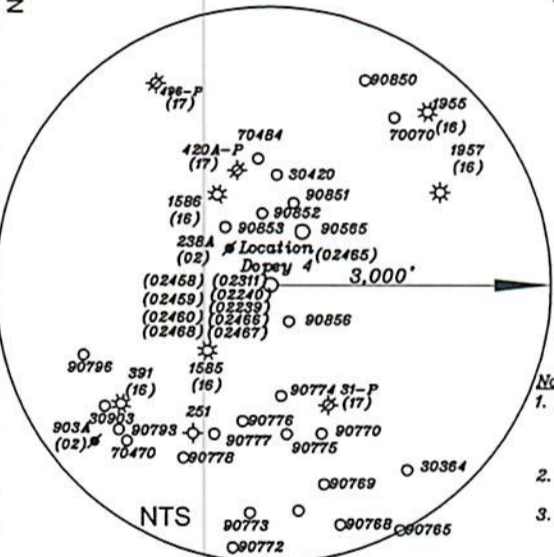


Top Hole	UTM NAD83(meter)-4365438.02 N. 519589.20 E
Landing Point	UTM NAD83(meter)-4365340.79 N. 520012.72 E
Bottom Hole	UTM NAD83(meter)-4364423.70 N. 520815.46 E
Top Hole	UTM NAD83(meter)-4365437.78 N. 519589.17 E
Landing Point	UTM NAD83(meter)-4365272.74 N. 520075.08 E
Bottom Hole	UTM NAD83(meter)-4364417.48 N. 520810.81 E

- A- Montgomery TM 11/27 65 Ac. T3055A
- B- Montgomery TM 11/14 2.18 Ac. T3052A
- C- Vincent TM 11/14.4 1.82 Ac. T3052A
- D- Ritter (Life) TM 11/29 1.83 Ac.
- E- Stillson TM 11/28 0.37 Ac.
- F- Tallman TM 11/14.5 5.135 Ac. T3052A
- G- Woodburn et al TM 11/45 0.755 Ac.
- H- Woodburn et al TM 11/44 1.5 Ac.
- I- Woodburn et al TM 11/44 6.75 Ac.
- J- Davis TM 11/41 18.82 Ac.
- K- Kils estate TM 11/36 57 Ac.
- L- KES Investments 3 LLC TM 16/4 49.13 Ac.
- M- KES Investments 3 LLL TM 16/4 Residue of 78.4 Ac.
- N- Woodburn et al TM 11/43 35 Ac. T3056A1
- O- Hunter Real Estate LLC, Triad Hunter LLC TM 11/37 147 Ac.
- P- Woodburn et al TM 11/42 25.5 Ac. T3056A2
- Q- Kile Est. TM 11/36.1 50 Ac. T3055B
- R- Holliday TM 11/30.2 0.56 Ac.
- S- Woodburn et al TM 11/14.1 2 Ac.



NORTH



Notes:

1. All wells within 500' of the horizontal leg are shown on this plat based upon information taken from DEP mapping, well plats, & aerial photos.
2. Ties to wells and corners are based on State Plane Grid North-WV North Zone NAD 83.
3. No water wells were found within 250' of the well location. A house was found N55°54'W 614.3' from the center of the well pad.

NUMBER	DIRECTION	DISTANCE
L1	N 27°02' E	1,489.1'
L2	S 82°26' W	800.3'
L3	S 70°17' E	1,684.2'

(+) DENOTES LOCATION OF WELL ON UNITED STATES TOPOGRAPHIC MAPS

RECEIVED
Office of Oil and Gas

MAY 7 2019

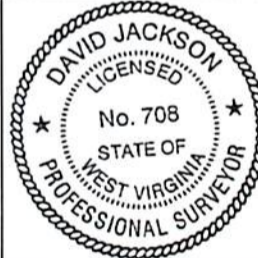
WV Department of
Environmental Protection

AS-DRILLED LEC
PROPOSED LEC

FILE NO. _____
 DRAWING NO. 1
 SCALE 1" = 2000'
 MINIMUM DEGREE OF ACCURACY 1 in 200
 PROVEN SOURCE OF ELEVATION GPS
submeter unit

I THE UNDERSIGNED, HEREBY CERTIFY THAT THIS PLAT IS CORRECT TO THE BEST OF MY KNOWLEDGE AND BELIEF AND SHOWS ALL THE INFORMATION REQUIRED BY LAW AND THE RULES ISSUED AND PRESCRIBED BY THE DEPARTMENT OF ENVIRONMENTAL PROTECTION.

(SIGNED) David L Jackson
 R.P.E. _____ P.S. 708



STATE OF WEST VIRGINIA
 Division of Environmental Protection
 OFFICE OF OIL AND GAS

DATE February 12, 2019
 OPERATOR'S WELL NO. Dopey 4
 API WELL NO. _____

WELL TYPE: OIL GAS X LIQUID INJECTION WASTE DISPOSAL STATE COUNTY PERMIT
 (IF "GAS") PRODUCTION STORAGE X DEEP SHALLOW X
 LOCATION: ELEVATION 910.0' WATER SHED Indian Creek - Outlet Middle Island Creek (HUC-10)
 DISTRICT McElroy COUNTY Tyler
 QUADRANGLE Shirley 7 1/2'

SURFACE OWNER John & Patty Montgomery ACREAGE 65 ac.
 OIL & GAS ROYALTY OWNER & LEASE NO. See Above for Lease Numbers

PROPOSED WORK: DRILL CONVERT DRILL DEEPER REDRILL FRACTURE OR STIMULATE PLUG OFF OLD FORMATION PERFORATE NEW FORMATION OTHER PHYSICAL CHANGE IN WELL (SPECIFY) ASDRILLED

PLUG AND ABANDON CLEAN OUT AND REPLUG
 TARGET FORMATION Marcellus ESTIMATED DEPTH TVD = 6,656'; TMD = 11,038'
 WELL OPERATOR Jay Bee Oil & Gas, Inc. DESIGNATED AGENT Randy Broda
 ADDRESS 1720 Rt. 22, East Union, NJ 07083 ADDRESS 3570 Shields Hill Road, Cairo, WV 26337

Bottom Hole 10,669'
 Top Hole 7,248'
 LONGITUDE 80-45-00 W