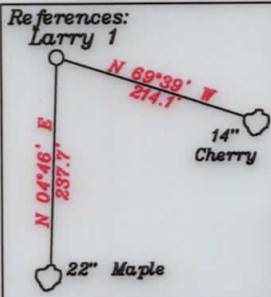


LATITUDE 39-30-00 N (TH)  
 LATITUDE 39-27-30 N (BH)

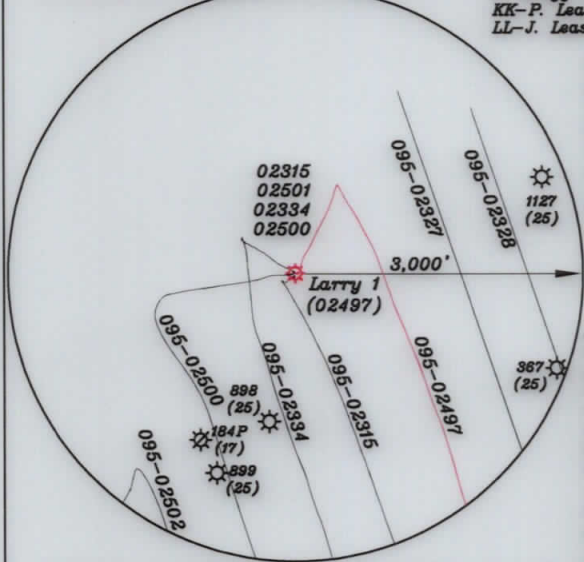
Bottom Hole 9,665'



NUMBER	DIRECTION	DISTANCE
L1	N68°19' E	999.6'
L2	N16°28' E	2,498.2'
L3	N81°00' E	876.5'

- A-Peak TM. 26-46.8 2.079 Ac.
- B-Peak TM. 26-46.20 0.652 Ac.
- C-Peak TM. 26-46.19 4.59 Ac.
- D-Peak TM. 26-46.21 0.22 Ac.
- E-Sulser TM. 26-110 4.412 Ac.
- F-Kelly TM. 26-46.18 4.323 Ac.
- G-Kelly TM. 26-46.17 4.714 Ac.
- H-Johnson TM. 26-46.23 3.598 Ac.
- I-Johnson TM. 26-46.22 2.92 Ac.
- J-Holliday TM. 26-46.13 5.94 Ac.
- K-Holliday TM. 26-46.12 3.238 Ac.
- L-Kanz TM. 26-46.3 5.4 Ac.
- M-Kanz TM. 26-46.7 7.32 Ac.
- N-JayBee TM. 26-46.14 8.692 Ac.
- O-Pitman TM. 26-46.2 5.135 Ac.
- P-Johnson TM. 26-46.9 5 Ac.
- Q-Kanz TM. 26-46.6 1.702 Ac.
- R-Kanz TM. 26-46.15 3.722 Ac.
- S-JayBee TM. 26-46.16 5.094 Ac.
- T-Shrader TM. 26-46.1 5.58 Ac.
- U-Ison TM. 26-46.10 4.98 Ac.
- V-Doty TM. 26-46.5 13.14 Ac.
- W-Kanz TM. 26-46.4 8.1 Ac.
- X-Walton TM. 26-46.11 6.43 Ac.
- Y-JayBee TM. 26-46.24 3.059 Ac.
- Z-JayBee TM. 26-19.9 1.496 Ac.
- AA-Weigle TM. 27-22 60.19 Ac.
- BB-Weigle TM. 27-23 61.62 Ac.
- CC-Seckman et al TM. 27-26 128.5 Ac.
- DD-WVDNR TM. 27-3 0.44 Ac. WVDNR
- EE-Villers & Eskew TM. 20-62 67.67 Ac.
- FF-Suter TM. 20-65.1 1.58 Ac.
- GG-Baker TM. 21-39 3.15 Ac.
- HH-Fletcher & Mitchell TM. 21-37 3.86 Ac.
- II-Spencer TM. 21-36 2.06 Ac.
- JJ-Cregg TM. 21-35 0.72 Ac.
- KK-P. Leasure TM. 21-26 30 Ac.
- LL-J. Leasure & Cilmore TM. 21-27 40 Ac.

NORTH



— LEGEND —

	Lease lines
	500' from well bore path
	Surface tracts within lease
	Adjoiner tracts

Notes:  
 1. All wells within 500' of the horizontal leg are shown on this plat based upon information taken from DEP mapping, well plats, & aerial photos.  
 2. Ties to wells and corners are based on State Plane Grid North-WV North Zone NAD 83.  
 3. No water wells were found within 250' of the well location. A house was found S64°59'W 580' from the center of the well pad. A wetlands is located 103' from LOD.

(+) DENOTES LOCATION OF WELL ON UNITED STATES TOPOGRAPHIC MAPS

Top Hole - TH	UTM NAD 83(Meters)- 4369523.64 N, 510261.86 E
Landing Point - LP	UTM NAD 83(Meters)- 4369511.39 N, 510550.84 E
Bottom Hole - BH	UTM NAD 83(Meters)- 4367215.31 N, 511400.47 E
Top Hole - TH	UTM NAD 83(Meters)- 4369523.65 N, 510261.54 E
Landing Point - LP	UTM NAD 83(Meters)- 4369569.84 N, 510524.58 E
Bottom Hole - BH	UTM NAD 83(Meters)- 4367212.40 N, 511394.25 E

FILE NO. \_\_\_\_\_  
 DRAWING NO. 1  
 SCALE 1" = 2000'  
 MINIMUM DEGREE OF ACCURACY 1 in 200  
 PROVEN SOURCE OF ELEVATION GPS  
submeter unit

I THE UNDERSIGNED, HEREBY CERTIFY THAT THIS PLAT IS CORRECT TO THE BEST OF MY KNOWLEDGE AND BELIEF AND SHOWS ALL THE INFORMATION REQUIRED BY LAW AND THE RULES ISSUED AND PRESCRIBED BY THE DEPARTMENT OF ENVIRONMENTAL PROTECTION.

(SIGNED) David L Jackson  
 R.P.E. \_\_\_\_\_ P.S. 708



STATE OF WEST VIRGINIA  
 Division of Environmental Protection  
 OFFICE OF OIL AND GAS

DATE December 19, 2019  
 OPERATOR'S WELL NO. Larry 1  
 API WELL NO. \_\_\_\_\_

WELL TYPE: OIL GAS LIQUID INJECTION X WASTE DISPOSAL \_\_\_\_\_ STATE 47 COUNTY 095 PERMIT 02497  
 (IF "GAS") PRODUCTION X STORAGE \_\_\_\_\_ DEEP \_\_\_\_\_ SHALLOW X

LOCATION: ELEVATION 738.76' WATER SHED Outlet Middle Island Creek (HUC-10)  
 DISTRICT Ellsworth COUNTY Tyler  
 QUADRANGLE Middlebourne 7 1/2' (TH), Shirley 7 1/2' (BH)

SURFACE OWNER Jay Bee Oil & Gas, Inc. ACREAGE 286.03 ac.  
 OIL & GAS ROYALTY OWNER Ridgetop Capital LP, and Ridgetop Capital II, LP LEASE ACREAGE 286.03 ac.  
 LEASE NO. RT2

PROPOSED WORK: DRILL \_\_\_\_\_ CONVERT \_\_\_\_\_ DRILL DEEPER \_\_\_\_\_ REDRILL \_\_\_\_\_ FRACTURE OR STIMULATE \_\_\_\_\_ PLUG OFF OLD FORMATION \_\_\_\_\_ PERFORATE NEW FORMATION \_\_\_\_\_ OTHER PHYSICAL CHANGE IN WELL (SPECIFY) AsDrilled

PLUG AND ABANDON \_\_\_\_\_ CLEAN OUT AND REPLUG \_\_\_\_\_  
 TARGET FORMATION Marcellus ESTIMATED DEPTH TVD = 6,222'; TMD = 15,238'  
 WELL OPERATOR Jay-Bee Oil & Gas, Inc. DESIGNATED AGENT Randy Broda  
 ADDRESS 60 Walnut Avenue, Suite 190, Clark, NJ 07066 ADDRESS 3570 Shields Hill Rd., Cairo, WV 26337

LONGITUDE 80-50-00 W (BH)  
 Bottom Hole 1,432'  
 Top Hole 9,019'  
 LONGITUDE 80-52-30 W (TH)