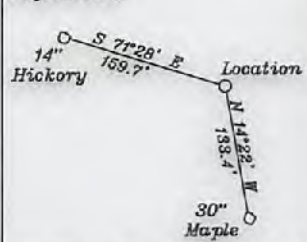


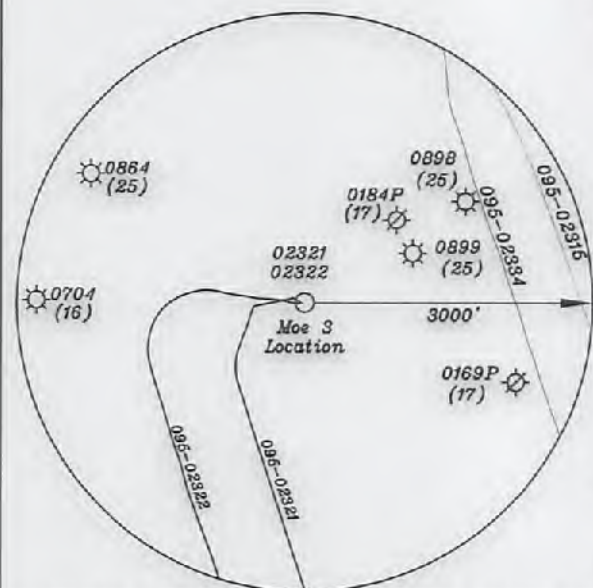
References



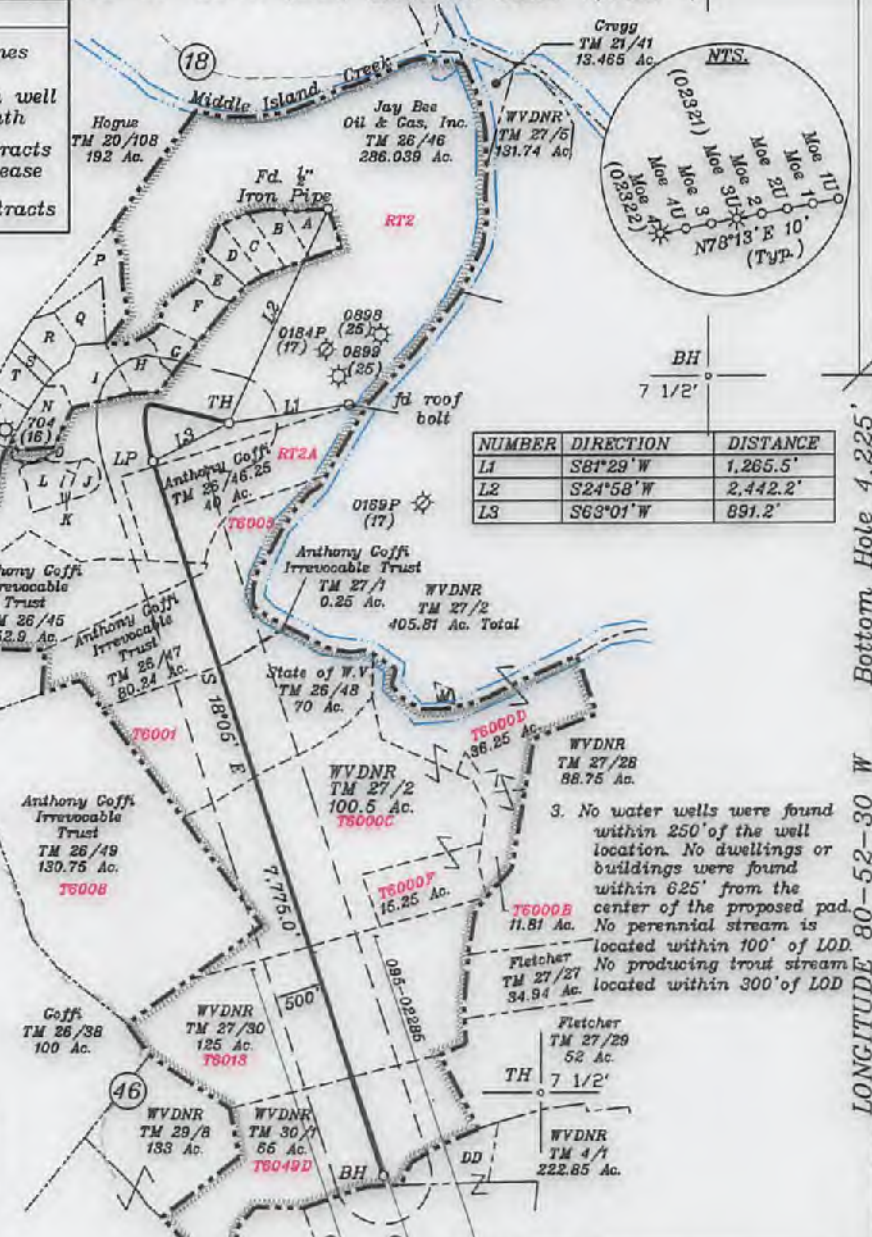
— LEGEND —

— (solid line) —	Lease lines
- - - - - (dashed line)	500' from well bore path
- - - - - (dotted line)	Surface tracts within lease
- - - - - (dash-dot line)	Adjoiner tracts

- A-Sulser TM 20-110 4.412 Ac.
- B-Kelly et al TM 26-46.18 4.323 Ac.
- C-Kelly et al TM 26-46.17 4.114 Ac.
- D-Johnson TM 26-46.23 3.598 Ac.
- E-Johnson TM 26-46.22 2.92 Ac.
- F-Holliday TM 26-46.13 5.94 Ac.
- G-Holliday TM 26-46.12 3.238 Ac.
- H-Kanz TM 26-46.3 5.4 Ac.
- I-Putera TM 26-46.7 7.32 Ac.
- J-Peek TM 26-46.8 2.079 Ac. DOAN
- K-Peek TM 26-46.20 0.652 Ac. DOAN
- L-Peek TM 26-46.19 4.59 Ac. DOAN
- M-WVDNR TM 27-3 0.44 Ac.
- N-Shrader TM 26-46.1 5.58 Ac.
- O-Peek TM 26-46.21 0.22 Ac.
- P-JayBee TM 26-46.14 8.692 Ac.
- Q-Pittman TM 26-46.2 5.135 Ac.
- R-Johnson TM 26-46.9 5 Ac.
- S-Putera TM 26-46.6 1.702 Ac.
- T-Putera TM 26-46.15 3.722 Ac.
- U-JayBee TM 26-46.16 5.094 Ac.
- V-Ison TM 26-46.10 4.98 Ac.
- W-Doyle TM 26-46.5 13.14 Ac.
- X-Kanz TM 26-46.4 8.1 Ac.
- Y-Walton TM 26-46.11 6.43 Ac.
- Z-JayBee TM 26-46.24 3.059 Ac.
- AA-Palmer TM 26-19.11 9.40 Ac.
- BB-Westbrook TM 26-19.4 9.36 Ac.
- CC-JayBee Oil & Gas, Inc. TM 26-19.9 1.496 Ac.
- DD-WVDNR TM 30-3 51.06 Ac.



(+) DENOTES LOCATION OF WELL ON UNITED STATES TOPOGRAPHIC MAPS



Notes:

- All wells within 500' of the horizontal leg are shown on this plat based upon information taken from DEP mapping, well plats, & aerial photos.
- Ties to wells and corners are based on State Plane Grid North-WV North Zone NAD 83.

3. No water wells were found within 250' of the well location. No dwellings or buildings were found within 625' from the proposed pad. No perennial stream is located within 100' of LOD. No producing trout stream located within 300' of LOD.

Top Hole - TH	Geo NAD 83 - 39.468067 N, 80.887493 W
	UTM NAD 83(Meters)-4368726.66 N, 509677.67 E
	UTM NAD 83(Feet)-14333064.03 N, 1672167.48 E
Landing Point - LP	Geo NAD 83 - 39.466923 N, 80.890284 W
	UTM NAD 83(Meters)-4368599.39 N, 509437.78 E
	UTM NAD 83(Feet)-14332546.51 N, 1671380.43 E
Bottom Hole - BH	Geo NAD 83 - 39.446736 N, 80.881335 W
	UTM NAD 83(Meters)-4366359.95 N, 510210.47 E
	UTM NAD 83(Feet)-14325299.26 N, 1673915.52 E

FILE NO. \_\_\_\_\_  
 DRAWING NO. 1  
 SCALE 1" = 2000'  
 MINIMUM DEGREE OF ACCURACY 1 in 200  
 PROVEN SOURCE OF ELEVATION GPS  
submeter unit

I THE UNDERSIGNED, HEREBY CERTIFY THAT THIS PLAT IS CORRECT TO THE BEST OF MY KNOWLEDGE AND BELIEF AND SHOWS ALL THE INFORMATION REQUIRED BY LAW AND THE RULES ISSUED AND PRESCRIBED BY THE DEPARTMENT OF ENVIRONMENTAL PROTECTION.

(SIGNED) David L Jackson  
 R.P.E. \_\_\_\_\_ PS. 708



STATE OF WEST VIRGINIA  
 Division of Environmental Protection  
 OFFICE OF OIL AND GAS

DATE February 21, 2018  
 OPERATOR'S WELL NO. Moe 3  
 API WELL NO. \_\_\_\_\_

WELL TYPE: OIL GAS X LIQUID INJECTION \_\_\_\_\_ WASTE DISPOSAL \_\_\_\_\_ STATE COUNTY PERMIT  
 (IF "GAS") PRODUCTION X STORAGE \_\_\_\_\_ DEEP \_\_\_\_\_ SHALLOW X

LOCATION: ELEVATION 962.4' WATER SHED Outlet Middle Island Creek (HUC-10)  
 DISTRICT Ellsworth COUNTY Tyler  
 QUADRANGLE Middlebourne 7 1/2'

SURFACE OWNER Jay Bee Oil & Gas, Inc. ACREAGE 286.03 ac.  
 OIL & GAS ROYALTY OWNER Ridgetop Capital LP and Ridgetop Capital II, LP LEASE ACRE 06/29/2018  
 LEASE NO. RT2

PROPOSED WORK: DRILL X CONVERT \_\_\_\_\_ DRILL DEEPER \_\_\_\_\_ REDRILL \_\_\_\_\_ FRACTURE OR STIMULATE X PLUG OFF OLD FORMATION \_\_\_\_\_ PERFORATE NEW FORMATION \_\_\_\_\_ OTHER PHYSICAL CHANGE IN WELL (SPECIFY) \_\_\_\_\_

PLUG AND ABANDON \_\_\_\_\_ CLEAN OUT AND REPLUG \_\_\_\_\_  
 TARGET FORMATION Marcellus ESTIMATED DEPTH TVD = 6,395' TMD = 15,561'  
 WELL OPERATOR Jay-Bee Oil & Gas, Inc. DESIGNATED AGENT Randy Broda  
 ADDRESS 1720 Route 22 E, Union, NJ 07083 ADDRESS 3570 Shields Hill Rd., Cairo, WV 26337



Directions to Klondike Acres Rd  
4.2 mi – about 11 mins

