

References

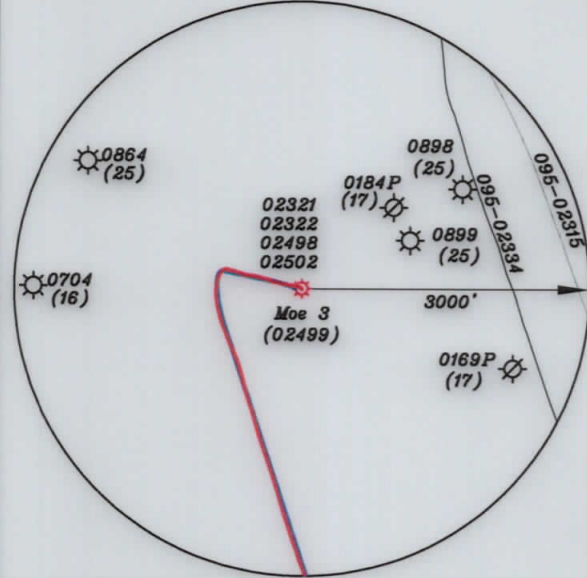


— LEGEND —

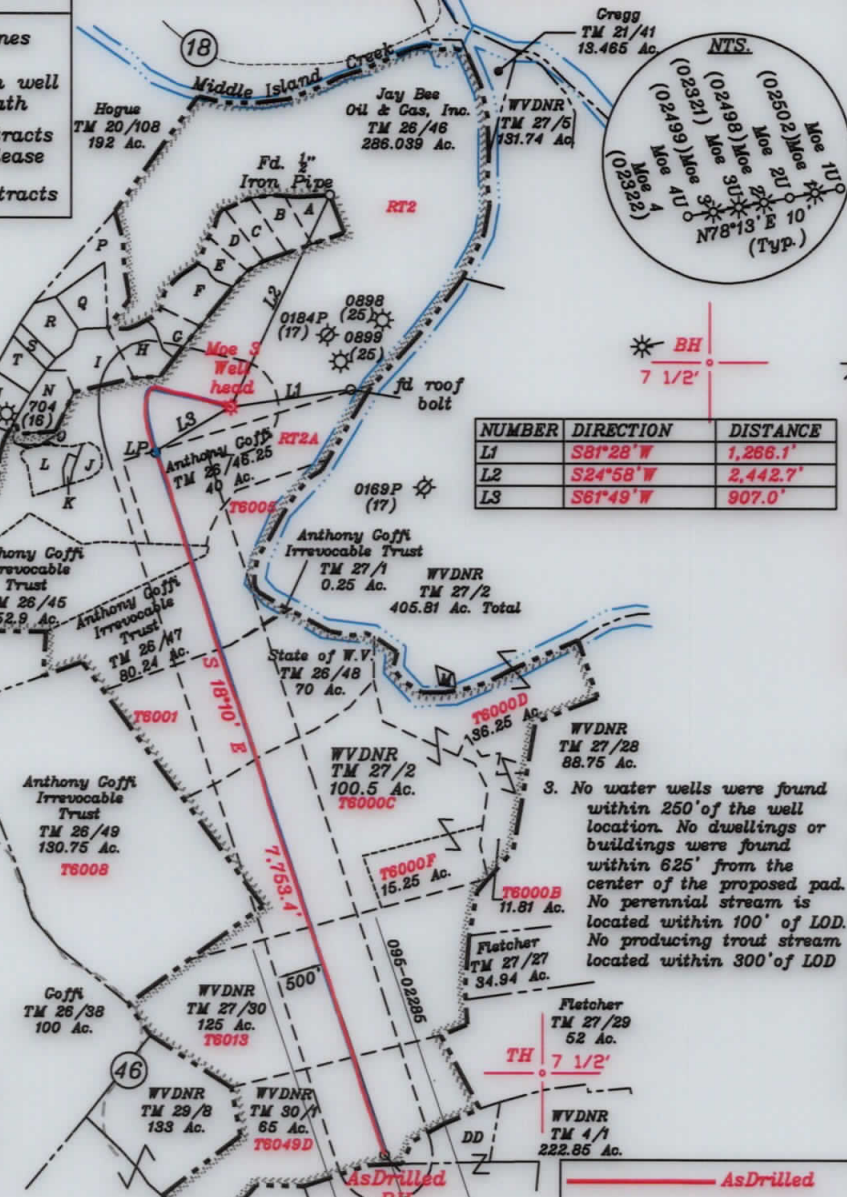
- Lease lines
- - - - - 500' from well bore path
- - - - - Surface tracts within lease
- - - - - Adjoiner tracts

- A-Sulser TM. 20-110 4.412 Ac.
- B-Kelly et al TM. 26-46.18 4.323 Ac.
- C-Kelly et al TM. 26-46.17 4.114 Ac.
- D-Johnson TM. 26-46.23 3.598 Ac.
- E-Johnson TM. 26-46.22 2.92 Ac.
- F-Holliday TM. 26-46.13 5.94 Ac.
- G-Holliday TM. 26-46.12 3.238 Ac.
- H-Kanz TM. 26-46.3 5.4 Ac.
- I-Patera TM. 26-46.7 7.32 Ac.
- J-Peek TM. 26-46.8 2.079 Ac. DOAN
- K-Peek TM. 26-46.20 0.652 Ac. DOAN
- L-Peek TM. 26-46.19 4.59 Ac. DOAN
- M-WVDNR TM. 27-3 0.44 Ac.
- N-Shrader TM. 26-46.1 5.58 Ac.
- O-Peek TM. 26-46.21 0.22 Ac.
- P-JayBee TM. 26-46.14 8.692 Ac.
- Q-Pittman TM. 26-46.2 5.135 Ac.
- R-Johnson TM. 26-46.9 5 Ac.
- S-Patera TM. 26-46.6 1.702 Ac.
- T-Patera TM. 26-46.15 3.722 Ac.
- U-JayBee TM. 26-46.16 5.094 Ac.
- V-Ison TM. 26-46.10 4.98 Ac.
- W-Doty TM. 26-46.5 13.14 Ac.
- X-Kanz TM. 26-46.4 8.1 Ac.
- Y-Walton TM. 26-46.11 6.43 Ac.
- Z-JayBee TM. 26-46.24 3.059 Ac.
- AA-Palmer TM. 26-19.11 9.40 Ac.
- BB-Westbrook TM. 26-19.4 9.36 Ac.
- CC-JayBee Oil & Gas, Inc. TM. 26-19.9 1.496 Ac.
- DD-WVDNR TM. 30-3 51.06 Ac.

NORTH



(+) DENOTES LOCATION OF WELL ON UNITED STATES TOPOGRAPHIC MAPS



NUMBER	DIRECTION	DISTANCE
L1	S81°28'W	1,266.1'
L2	S24°58'W	2,442.7'
L3	S61°49'W	907.0'

3. No water wells were found within 250' of the well location. No dwellings or buildings were found within 625' from the center of the proposed pad. No perennial stream is located within 100' of LOD. No producing trout stream located within 300' of LOD

- Notes:
- All wells within 500' of the horizontal leg are shown on this plat based upon information taken from DEP mapping, well plats, & aerial photos.
 - Ties to wells and corners are based on State Plane Grid North-WV North Zone NAD 83.

Top Hole - TH	UTM NAD 83(Meters)-4368726.66 N, 509677.67 E
Landing Point - LP	UTM NAD 83(Meters)-4368599.39 N, 509437.78 E
Bottom Hole - BH	UTM NAD 83(Meters)-4368359.95 N, 510210.47 E
Top Hole - TH	UTM NAD 83(Meters)-4368726.55 N, 509677.51 E
Landing Point - LP	UTM NAD 83(Meters)-4368592.00 N, 509436.14 E
Bottom Hole - BH	UTM NAD 83(Meters)-4368359.89 N, 510209.96 E

FILE NO. _____
 DRAWING NO. 1
 SCALE 1" = 2000'
 MINIMUM DEGREE OF ACCURACY 1 in 200
 PROVEN SOURCE OF ELEVATION GPS
submeter unit

I THE UNDERSIGNED, HEREBY CERTIFY THAT THIS PLAT IS CORRECT TO THE BEST OF MY KNOWLEDGE AND BELIEF AND SHOWS ALL THE INFORMATION REQUIRED BY LAW AND THE RULES ISSUED AND PRESCRIBED BY THE DEPARTMENT OF ENVIRONMENTAL PROTECTION.

(SIGNED) David L Jackson
 R.P.E. _____ P.S. 708



STATE OF WEST VIRGINIA
 Division of Environmental Protection
 OFFICE OF OIL AND GAS

DATE October 01, 2019
 OPERATOR'S WELL NO. Moe 3
 API WELL NO. _____

WELL TYPE: OIL GAS LIQUID INJECTION _____ WASTE DISPOSAL _____ STATE 47 COUNTY 095 PERMIT 02499
 (IF "GAS") PRODUCTION X STORAGE _____ DEEP _____ SHALLOW X

LOCATION: ELEVATION 962.3' WATER SHED Outlet Middle Island Creek (HUC-10)
 DISTRICT Ellsworth COUNTY Tyler
 QUADRANGLE Middlebourne 7 1/2'

SURFACE OWNER Jay Bee Oil & Gas, Inc. ACREAGE 286.03 ac.
 OIL & GAS ROYALTY OWNER Ridgetop Capital LP and Ridgetop Capital II, LP LEASE ACREAGE 286.03 ac.
 LEASE NO. RT2

PROPOSED WORK: DRILL _____ CONVERT _____ DRILL DEEPER _____ REDRILL _____ FRACTURE OR STIMULATE _____ PLUG OFF OLD FORMATION _____ PERFORATE NEW FORMATION _____ OTHER PHYSICAL CHANGE IN WELL (SPECIFY) As Drilled

PLUG AND ABANDON _____ CLEAN OUT AND REPLUG _____
 TARGET FORMATION Marcellus ESTIMATED DEPTH TVD = 6,418' TMD = 14,593'
 WELL OPERATOR Jay-Bee Oil & Gas, Inc. DESIGNATED AGENT Randy Broda
 ADDRESS 60 Walnut Avenue, Suite 190, Clark, NJ 07066 ADDRESS 3570 Shields Hill Rd., Cairo, WV 26337

LONGITUDE 80-52-30 W
 LONGITUDE 80-52-30 W
 Bottom Hole 4,225'
 Top Hole 11,632'

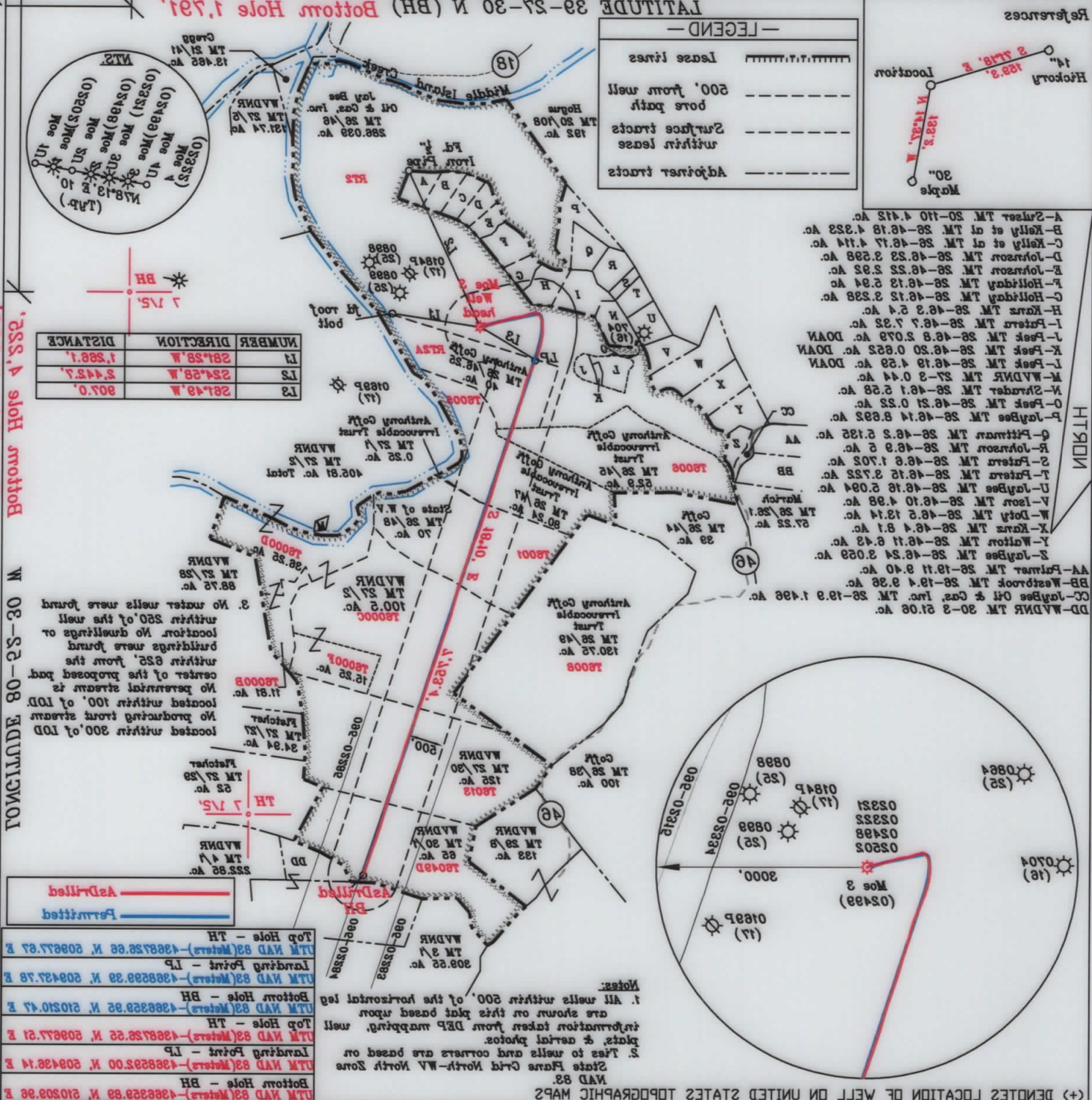
ADDRESS 280 Walnut Avenue, Suite 190, Clark, NJ 07066 ADDRESS 3570 Shields Hill Rd., Cairo, WV 26337
 WELL OPERATOR Jay-Bee Oil & Gas, Inc. DESIGNATED AGENT Randy Broda
 TARGET FORMATION Marcellus ESTIMATED DEPTH TVD = 6,418', TMD = 14,593'
 PLUG AND ABANDON CLEAN OUT AND REPLUG
 FORMATION OTHER PHYSICAL CHANGE IN WELL (SPECIFY) As Drilled
 STIMULATE PLUG OFF OLD FORMATION PERFORATE NEW
 PROPOSED WORK: DRILL CONVERT DRILL DEEPER REDRILL FRACTURE OR
 DIL & GAS ROYALTY OWNER Ridgeway Capital LP and Ridgeway Capital II, LP LEASE AREA 286.03 ac.
 SURFACE OWNER Jay Bee Oil & Gas, Inc. QUADRANGLE Middlebourne 7 1/2'
 DISTRICT Ellsworth COUNTY Tyler
 LOCATION: ELEVATION 862.3' WATER SHED Outlet Middle Island Creek (HUC-10)
 (IF 'GAS') PRODUCTION STORAGE DEEP SHALLOW
 WELL TYPE: OIL GAS X LIQUID INJECTION WASTE DISPOSAL STATE COUNTY PERMIT
 OFFICE OF OIL AND GAS DIVISION OF ENVIRONMENTAL PROTECTION STATE OF WEST VIRGINIA
 OPERATOR'S WELL NO. 02499 API WELL NO.
 DATE October 01, 2019
 I THE UNDERSIGNED, HEREBY CERTIFY THAT THIS PLAN IS CORRECT TO THE BEST OF MY KNOWLEDGE AND BELIEF AND SHOWS ALL THE INFORMATION REQUIRED BY LAW AND THE RULES OF ENVIRONMENTAL PROTECTION.
 R.P.E. David Jackson No. 708
 STATE OF WEST VIRGINIA
 PROFESSIONAL SURVEYOR
 LICENSED
 No. 708
 STATE OF WEST VIRGINIA
 DATE October 01, 2019
 OPERATOR'S WELL NO. 02499 API WELL NO.
 STATE COUNTY PERMIT
 SURFACE OWNER Jay Bee Oil & Gas, Inc. QUADRANGLE Middlebourne 7 1/2'
 DISTRICT Ellsworth COUNTY Tyler
 LOCATION: ELEVATION 862.3' WATER SHED Outlet Middle Island Creek (HUC-10)
 (IF 'GAS') PRODUCTION STORAGE DEEP SHALLOW
 WELL TYPE: OIL GAS X LIQUID INJECTION WASTE DISPOSAL STATE COUNTY PERMIT
 OFFICE OF OIL AND GAS DIVISION OF ENVIRONMENTAL PROTECTION STATE OF WEST VIRGINIA
 OPERATOR'S WELL NO. 02499 API WELL NO.
 DATE October 01, 2019



FILE NO. _____
 DRAWING NO. 1
 SCALE 1" = 2000'
 MINIMUM DEGREE OF ACCURACY 1 in 200
 PROVEN SOURCE OF ELEVATION GPS
 submitter with

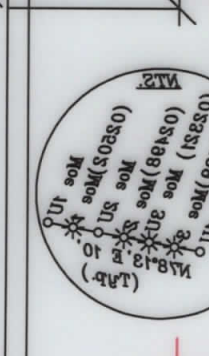
(SIGNED) David Jackson R.P.E. No. 708
 I THE UNDERSIGNED, HEREBY CERTIFY THAT THIS PLAN IS CORRECT TO THE BEST OF MY KNOWLEDGE AND BELIEF AND SHOWS ALL THE INFORMATION REQUIRED BY LAW AND THE RULES OF ENVIRONMENTAL PROTECTION.

Notes:
 1. All wells within 500' of the horizontal leg are shown on this plan based upon information taken from DEP mapping, well logs & aerial photos.
 2. Ties to wells and contours are based on State Plane Grid North-WV North Zone NAD 83.
 (+) DENOTES LOCATION OF WELL ON UNITED STATES TOPOGRAPHIC MAPS



Top Hole - TH
 TMD NAD 83 (Meters) - 43687.25 ac N 50827.67 E
 LP
 LANDING POINT - LP
 TUM NAD 83 (Meters) - 43682.93 ac N 50843.78 E
 Bottom Hole - BH
 TMD NAD 83 (Meters) - 43682.55 ac N 51020.47 E
 TH
 TMD NAD 83 (Meters) - 43687.25 ac N 50827.67 E
 LP
 LANDING POINT - LP
 TUM NAD 83 (Meters) - 43682.93 ac N 50843.78 E
 Bottom Hole - BH
 TMD NAD 83 (Meters) - 43682.55 ac N 51020.47 E

NUMBER	DIRECTION	DISTANCE
L1	S24°28' W	1,288.1'
L2	S24°28' W	2,443.7'
L3	S24°48' W	807.0'



References

14' History
 2 1/2' 82.3'
 1982.3'
 30' Apple

LEGEND

--- Lease lines
 - - - 500' from well bore path
 --- Surface tracts
 --- Adjacent tracts

References

A - 21st St TM 28-110 4.412 Ac.
 B - Kelly et al TM 28-48.18 4.323 Ac.
 C - Kelly et al TM 28-48.17 4.114 Ac.
 D - Johnson TM 28-48.23 2.298 Ac.
 E - Johnson TM 28-48.22 2.92 Ac.
 F - Holliday TM 28-48.13 2.94 Ac.
 G - Holliday TM 28-48.12 2.238 Ac.
 H - Karna TM 28-48.3 2.4 Ac.
 I - Patena TM 28-48.7 2.22 Ac.
 J - Park TM 28-48.8 2.079 Ac. DOAN
 K - Park TM 28-48.20 0.822 Ac. DOAN
 L - Park TM 28-48.19 4.24 Ac. DOAN
 M - WDNR TM 27-3 0.44 Ac.
 N - Strader TM 28-48.1 2.28 Ac.
 O - Park TM 28-48.21 0.22 Ac.
 P - Jaybee TM 28-48.14 8.832 Ac.
 Q - Pittman TM 28-48.2 2.125 Ac.
 R - Johnson TM 28-48.3 2 Ac.
 S - Patena TM 28-48.1 7.702 Ac.
 T - Patena TM 28-48.1 3.722 Ac.
 U - Jaybee TM 28-48.18 2.094 Ac.
 V - Ison TM 28-48.10 4.88 Ac.
 W - Doty TM 28-48.3 12.14 Ac.
 X - Karna TM 28-48.4 8.1 Ac.
 Y - Karna TM 28-48.11 8.42 Ac.
 Z - Jaybee TM 28-48.24 2.029 Ac.
 AA - Patena TM 28-48.11 2.40 Ac.
 BB - Westrook TM 28-19 4.28 Ac.
 CC - Jaybee Oil & Gas, Inc. TM 28-19.3 1.498 Ac.
 DD - WDNR TM 30-2 21.08 Ac.