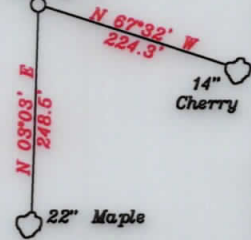


References:  
Larry 3

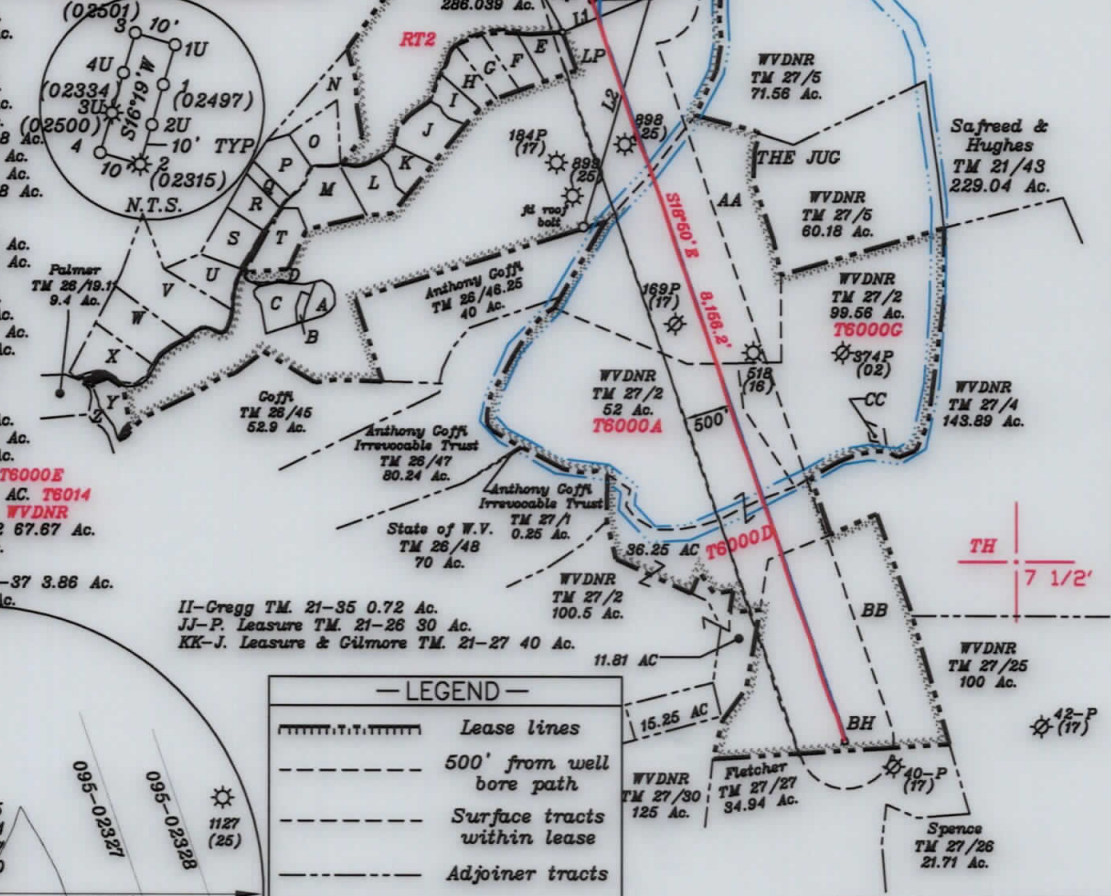


LATITUDE 39-27-30 N (BH)

NUMBER	DIRECTION	DISTANCE
L1	N67°35' E	997.8'
L2	N16°15' E	2,507.2'
L3	S85°42' W	612.1'

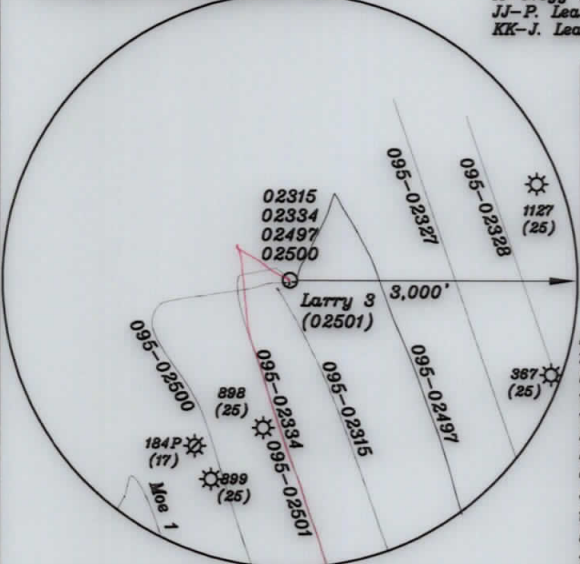
7 1/2' BH

- A-Peak TM 26-46.8 2.079 Ac.
- B-Peak TM 26-46.20 0.652 Ac.
- C-Peak TM 26-46.19 4.59 Ac.
- D-Peak TM 26-46.21 0.22 Ac.
- E-Sulser TM 20-110 4.412 Ac.
- F-Kelly TM 26-46.18 4.323 Ac.
- G-Kelly TM 26-46.17 4.114 Ac.
- H-Johnson TM 26-46.23 3.598 Ac.
- I-Johnson TM 26-46.22 2.92 Ac.
- J-Holiday TM 26-46.13 5.94 Ac.
- K-Holiday TM 26-46.12 3.238 Ac.
- L-Kanz TM 26-46.3 5.4 Ac.
- M-Kanz TM 26-46.7 7.32 Ac.
- N-JayBee TM 26-46.14 8.692 Ac.
- O-Pittman TM 26-46.2 5.135 Ac.
- P-Johnson TM 26-46.9 5 Ac.
- Q-Kanz TM 26-46.6 1.702 Ac.
- R-Kanz TM 26-46.15 3.722 Ac.
- S-JayBee TM 26-46.16 5.094 Ac.
- T-Shrader TM 26-46.1 5.58 Ac.
- U-Ison TM 26-46.10 4.98 Ac.
- V-Doty TM 26-46.5 13.14 Ac.
- W-Kanz TM 26-46.4 8.1 Ac.
- X-Walton TM 26-46.11 6.43 Ac.
- Y-JayBee TM 26-46.24 3.059 Ac.
- Z-JayBee TM 26-19.9 1.496 Ac.
- AA-WVDNR TM 27/2 90.0 Ac. T6000E
- BB-WVDNR TM 27/ 28 88.75 Ac. T6014
- CC-WVDNR TM 27-3 0.44 Ac. WVDNR
- DD-Villers & Eskew TM 20.62 67.67 Ac.
- EE-Suter TM 20-65.1 1.58 Ac.
- FF-Baker TM 21-39 3.15 Ac.
- GG-Fletcher & Mitchell TM 21-37 3.86 Ac.
- HH-Spencer TM 21-36 2.06 Ac.



NORTH

LONGITUDE 80-50-00 W (BH) Bottom Hole 1,564'  
LONGITUDE 80-52-30 W (TH) Top Hole 9,006'



— LEGEND —

- Lease lines
- 500' from well bore path
- Surface tracts within lease
- Adjoiner tracts

Notes:

- All wells within 500' of the horizontal leg are shown on this plat based upon information taken from DEP mapping, well plats, & aerial photos.
- Ties to wells and corners are based on State Plane Grid North-WV North Zone NAD 83.
- No water wells were found within 250' of the well location. A house was found S64°59'W 580' from the center of the well pad. A wetlands is located 103' from LOD.

Top Hole - TH	UTM NAD 83(Meters)-4369527.38 N, 510259.53 E
Landing Point - LP	UTM NAD 83(Meters)- 4369359.86 N, 510128.44 E
Bottom Hole - BH	UTM NAD 83(Meters)- 4367172.67 N, 510918.31 E
Top Hole - TH	UTM NAD 83(Meters)-4369527.06 N, 510259.49 E
Landing Point - LP	UTM NAD 83(Meters)- 4369509.97 N, 510073.78 E
Bottom Hole - BH	UTM NAD 83(Meters)- 4367171.52 N, 510915.03 E

FILE NO. \_\_\_\_\_  
 DRAWING NO. 1  
 SCALE 1" = 2000'  
 MINIMUM DEGREE OF ACCURACY 1 in 200  
 PROVEN SOURCE OF ELEVATION GPS  
submeter unit

I THE UNDERSIGNED, HEREBY CERTIFY THAT THIS PLAT IS CORRECT TO THE BEST OF MY KNOWLEDGE AND BELIEF AND SHOWS ALL THE INFORMATION REQUIRED BY LAW AND THE RULES ISSUED AND PRESCRIBED BY THE DEPARTMENT OF ENVIRONMENTAL PROTECTION.

(SIGNED) David L Jackson  
 R.P.E. \_\_\_\_\_ P.S. 708



STATE OF WEST VIRGINIA  
 Division of Environmental Protection  
 OFFICE OF OIL AND GAS

DATE March 9, 2020  
 OPERATOR'S WELL NO. Larry 3  
 API WELL NO. \_\_\_\_\_

WELL TYPE: OIL X GAS X LIQUID INJECTION \_\_\_\_\_ WASTE DISPOSAL \_\_\_\_\_  
 (IF 'GAS') PRODUCTION X STORAGE \_\_\_\_\_ DEEP \_\_\_\_\_ SHALLOW X  
 LOCATION: ELEVATION 738.58' WATER SHED Outlet Middle Island Creek (HUC-10)  
 DISTRICT Ellsworth COUNTY Tyler  
 QUADRANGLE Middlebourne 7 1/2' (TH), Shirley 7 1/2' (BH)  
 SURFACE OWNER Jay Bee Oil & Gas, Inc. ACREAGE 286.03 ac.  
 OIL & GAS ROYALTY OWNER Ridgetop Capital LP, and Ridgetop Capital II, LP LEASE ACREAGE 286.03 ac.  
 LEASE NO. RT2

PROPOSED WORK: DRILL \_\_\_\_\_ CONVERT \_\_\_\_\_ DRILL DEEPER \_\_\_\_\_ REDRILL \_\_\_\_\_ FRACTURE OR STIMULATE \_\_\_\_\_ PLUG OFF OLD FORMATION \_\_\_\_\_ PERFORATE NEW FORMATION \_\_\_\_\_ OTHER PHYSICAL CHANGE IN WELL (SPECIFY) As Drilled

PLUG AND ABANDON \_\_\_\_\_ CLEAN OUT AND REPLUG \_\_\_\_\_  
 TARGET FORMATION Marcellus ESTIMATED DEPTH TVD = 6,208'; TMD = 14,950'  
 WELL OPERATOR Jay-Bee Oil & Gas, Inc. DESIGNATED AGENT Randy Broda  
 ADDRESS 1720 Route 22 E, Union, NJ 07083 ADDRESS 3570 Shields Hill Rd., Cairo, WV 26337