

LATITUDE 39°27'30"

3,195'

LATITUDE 39°25'00"

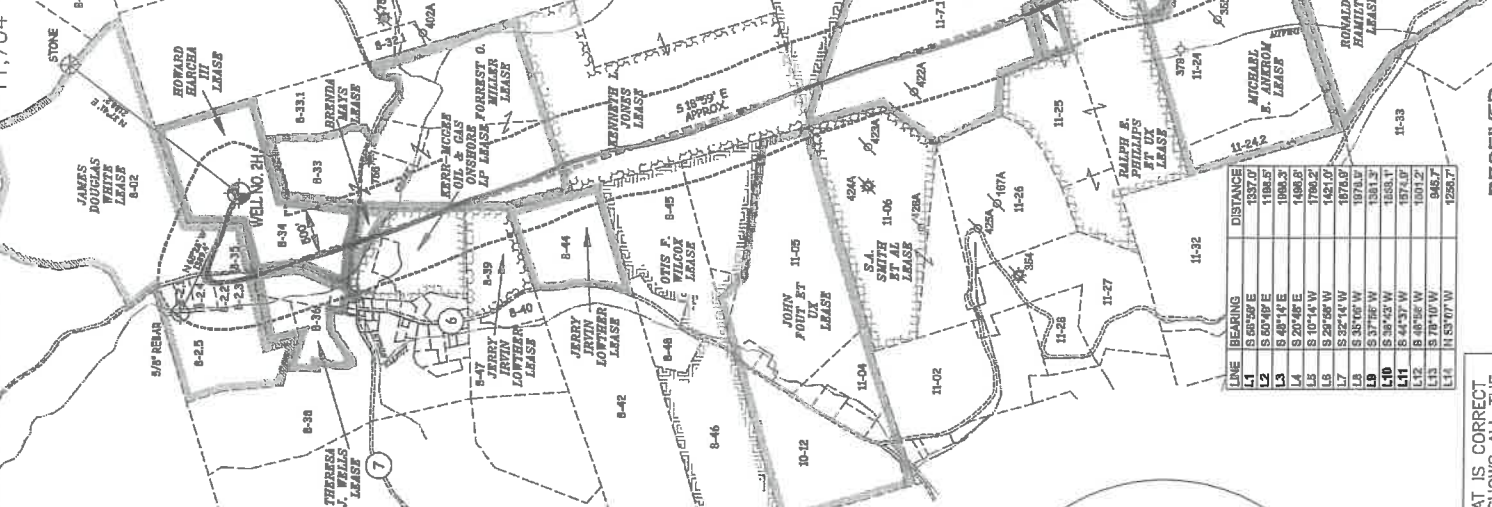
LONGITUDE 80°55'00"

15,095'

LONGITUDE 80°57'30"

11,459' TO BOTTOM HOLE

B-02	Charles Hester	390/193	103.89 AC
B-21	Allan Moore	490/217	1,272 AC
B-22	Andrew Weatherford	384/313	1,58 AC
B-23	Wesley Smith	590/27	1.81 AC
B-24	Donald Bushman	300/471	98.07 AC
B-25	Henry McAfee	347/255	22.29 AC
B-26	Henry Goodard	280/270	44.28 AC
B-27	John Williams	343/698	300 AC
B-28	John Williams	343/698	300 AC
B-29	John Williams	343/698	300 AC
B-30	John Williams	343/698	300 AC
B-31	John Williams	343/698	300 AC
B-32	John Williams	343/698	300 AC
B-33	John Williams	343/698	300 AC
B-34	John Williams	343/698	300 AC
B-35	John Williams	343/698	300 AC
B-36	John Williams	343/698	300 AC
B-37	John Williams	343/698	300 AC
B-38	John Williams	343/698	300 AC
B-39	John Williams	343/698	300 AC
B-40	John Williams	343/698	300 AC
B-41	John Williams	343/698	300 AC
B-42	John Williams	343/698	300 AC
B-43	John Williams	343/698	300 AC
B-44	John Williams	343/698	300 AC
B-45	John Williams	343/698	300 AC
B-46	John Williams	343/698	300 AC
B-47	John Williams	343/698	300 AC
B-48	John Williams	343/698	300 AC
B-49	John Williams	343/698	300 AC
B-50	John Williams	343/698	300 AC
B-51	John Williams	343/698	300 AC
B-52	John Williams	343/698	300 AC
B-53	John Williams	343/698	300 AC
B-54	John Williams	343/698	300 AC
B-55	John Williams	343/698	300 AC
B-56	John Williams	343/698	300 AC
B-57	John Williams	343/698	300 AC
B-58	John Williams	343/698	300 AC
B-59	John Williams	343/698	300 AC
B-60	John Williams	343/698	300 AC
B-61	John Williams	343/698	300 AC
B-62	John Williams	343/698	300 AC
B-63	John Williams	343/698	300 AC
B-64	John Williams	343/698	300 AC
B-65	John Williams	343/698	300 AC
B-66	John Williams	343/698	300 AC
B-67	John Williams	343/698	300 AC
B-68	John Williams	343/698	300 AC
B-69	John Williams	343/698	300 AC
B-70	John Williams	343/698	300 AC
B-71	John Williams	343/698	300 AC
B-72	John Williams	343/698	300 AC
B-73	John Williams	343/698	300 AC
B-74	John Williams	343/698	300 AC
B-75	John Williams	343/698	300 AC
B-76	John Williams	343/698	300 AC
B-77	John Williams	343/698	300 AC
B-78	John Williams	343/698	300 AC
B-79	John Williams	343/698	300 AC
B-80	John Williams	343/698	300 AC
B-81	John Williams	343/698	300 AC
B-82	John Williams	343/698	300 AC
B-83	John Williams	343/698	300 AC
B-84	John Williams	343/698	300 AC
B-85	John Williams	343/698	300 AC
B-86	John Williams	343/698	300 AC
B-87	John Williams	343/698	300 AC
B-88	John Williams	343/698	300 AC
B-89	John Williams	343/698	300 AC
B-90	John Williams	343/698	300 AC
B-91	John Williams	343/698	300 AC
B-92	John Williams	343/698	300 AC
B-93	John Williams	343/698	300 AC
B-94	John Williams	343/698	300 AC
B-95	John Williams	343/698	300 AC
B-96	John Williams	343/698	300 AC
B-97	John Williams	343/698	300 AC
B-98	John Williams	343/698	300 AC
B-99	John Williams	343/698	300 AC
B-100	John Williams	343/698	300 AC



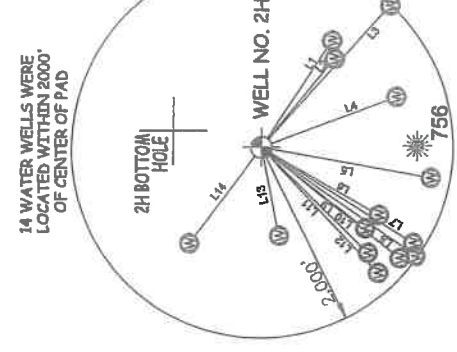
RECEIVED  
Office of Oil and Gas  
AUG 31 2020  
WV Department of  
Environmental Protection

**Antero Resources Corporation**  
Well No. Carse Unit 2H

AS DRILLED HOLE INFORMATION:  
WELL 2H TOP HOLE INFORMATION:  
N: 337,346ft E: 1,584,810ft  
LAT: 39°25'00.81" LON: 80°58'10.71"  
BOTTOM HOLE INFORMATION:  
N: 325,753ft E: 1,587,889ft  
LAT: 39°23'06.74" LON: 80°57'29.07"  
WEST VIRGINIA COORDINATE SYSTEM OF 1927 NORTH ZONE. MEASUREMENTS TAKEN WITH TRIANGLE GEOMX SUBMETER MAPPING GRADE GPS UNIT. PLAT ORIENTATION, CORNER, AND WELL REFERENCE TIE LINES ARE BASED ON GRID NORTH.

(NAD) 83 (UTM) ZONE 17 COORDS:  
WELL 2H TOP HOLE INFORMATION:  
N: 4,363,050m E: 502,628m  
BOTTOM HOLE INFORMATION:  
N: 4,359,534m E: 503,625m

**PAD LAYOUT**  
NOT TO SCALE



I, THE UNDERSIGNED, HEREBY CERTIFY THAT THIS PLAT IS CORRECT TO THE BEST OF MY KNOWLEDGE AND BELIEF AND SHOWS ALL THE INFORMATION REQUIRED BY LAW AND THE RULES ISSUED AND PERSCRIBED BY THE DEPARTMENT OF ENVIRONMENTAL PROTECTION.



STATE OF WEST VIRGINIA, DIVISION OF ENVIRONMENTAL PROTECTION, OFFICE OF OIL AND GAS  
WILLOW LAND SURVEYING PLLC  
220 MASONIC AVE. PENNSBORO WEST VIRGINIA 26415

JOB # 17-022WA  
DRAWING # CARSE2HAD  
SCALE 1" = 2000'  
MINIMUM DEGREE OF ACCURACY SUBMETER  
PROVEN SOURCE OF ELEV. SUBMETER MAPPING GRADE GPS

STATE OF WEST VIRGINIA DEPARTMENT OF ENERGY DIVISION OF OIL AND GAS

THOMAS SUMMERS P.S. 2109  
DATE 08/09/20  
OPERATOR'S WELL # CARSE UNIT #2H

- LEGEND**
- Surface Owner Boundary Lines +/-
  - - - Interior Surface Tracts +/-
  - Proposed Well Path
  - ⊗ As Drilled Well Path

WELL TYPE: OIL GAS X LIQUID INJECTION WASTE DISPOSAL  
(IF "GAS") PRODUCTION X STORAGE DEEP X SHALLOW X  
LOCATION: ELEVATION 986' - AS BUILT WATERSHED OUTLET MIDDLE ISLAND CREEK QUADRANGLE MIDDLEBOURNE 7.5 DISTRICT MEADE COUNTY TYLER ACREAGE 44.33 ACRES +/-  
SURFACE OWNER JOSEPH R. RYMER JR.  
OIL & GAS ROYALTY OWNER HOWARD HARCHA III, JAMES D. WHITE, THERESA J. WELLS, BRENDA MAYS, LEASE ACREAGE 44.33 AC +/- 134.53 AC +/- 17.5 AC +/- 3.27 AC +/-  
KERR-MCGEE OIL & GAS ONSHORE LP; FOREST MILLER; KENNETH JONES; CARL JACK WILCOX; ALLEN SMITH; EDWARD D. BILL JR.; 23.97 AC +/- 84.88 AC +/- 86.5 AC +/- 129.86 AC +/- 148.18 AC +/- 5.5 AC +/-  
RALPH PHILLIPS ET UX; JOEL YVON FAMILY PRESERVATION TRUST; JOEL YVON FAMILY PRESERVATION TRUST; JOEL YVON FAMILY PRESERVATION TRUST  
PROPOSED WORK: DRILL CONVERT DRILL DEEPER REDRILL FRACTURE OR STIMULATE  
PLUG OFF OLD FORMATION PERFORATE NEW FORMATION OTHER PHYSICAL CHANGE IN WELL CLEAN OUT & REPLUG  
(SPECIFY) AS DRILLED  
TARGET FORMATION MARCELLUS  
WELL OPERATOR ANTERO RESOURCES CORP. ESTIMATED DEPTH 6,307' TVD 18,631' MD  
ADDRESS 1615 WYNKOOP ST. DESIGNATED AGENT DIANNA STAMPER-CT CORPORATION SYSTEM  
FORM WW-6 DENVER, CO 80202

COUNTY NAME PERMIT  
STATE COUNTY COUNTY TYLER  
47 095 02527  
WATERSHED OUTLET MIDDLE ISLAND CREEK DISTRICT MEADE COUNTY TYLER  
ACREAGE 44.33 ACRES +/-  
LEASE ACREAGE 44.33 AC +/- 134.53 AC +/- 17.5 AC +/- 3.27 AC +/-  
23.97 AC +/- 84.88 AC +/- 86.5 AC +/- 129.86 AC +/- 148.18 AC +/- 5.5 AC +/-  
66.3 AC +/- 8 AC +/- 41.88 AC +/- 73.49 AC +/-  
FRACTURE OR STIMULATE  
OTHER PHYSICAL CHANGE IN WELL  
CLEAN OUT & REPLUG  
6,307' TVD 18,631' MD  
DIANNA STAMPER-CT CORPORATION SYSTEM  
5400 D BIG TYLER ROAD  
CHARLESTON, WV 25313