

11,747' to Bottom Hole

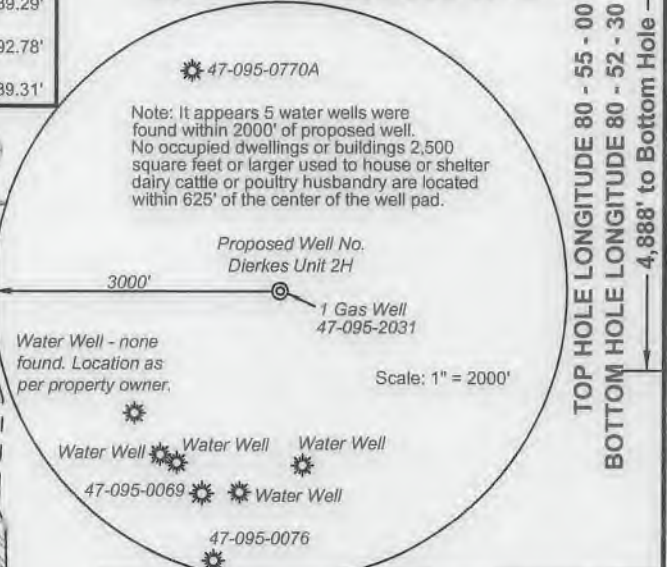
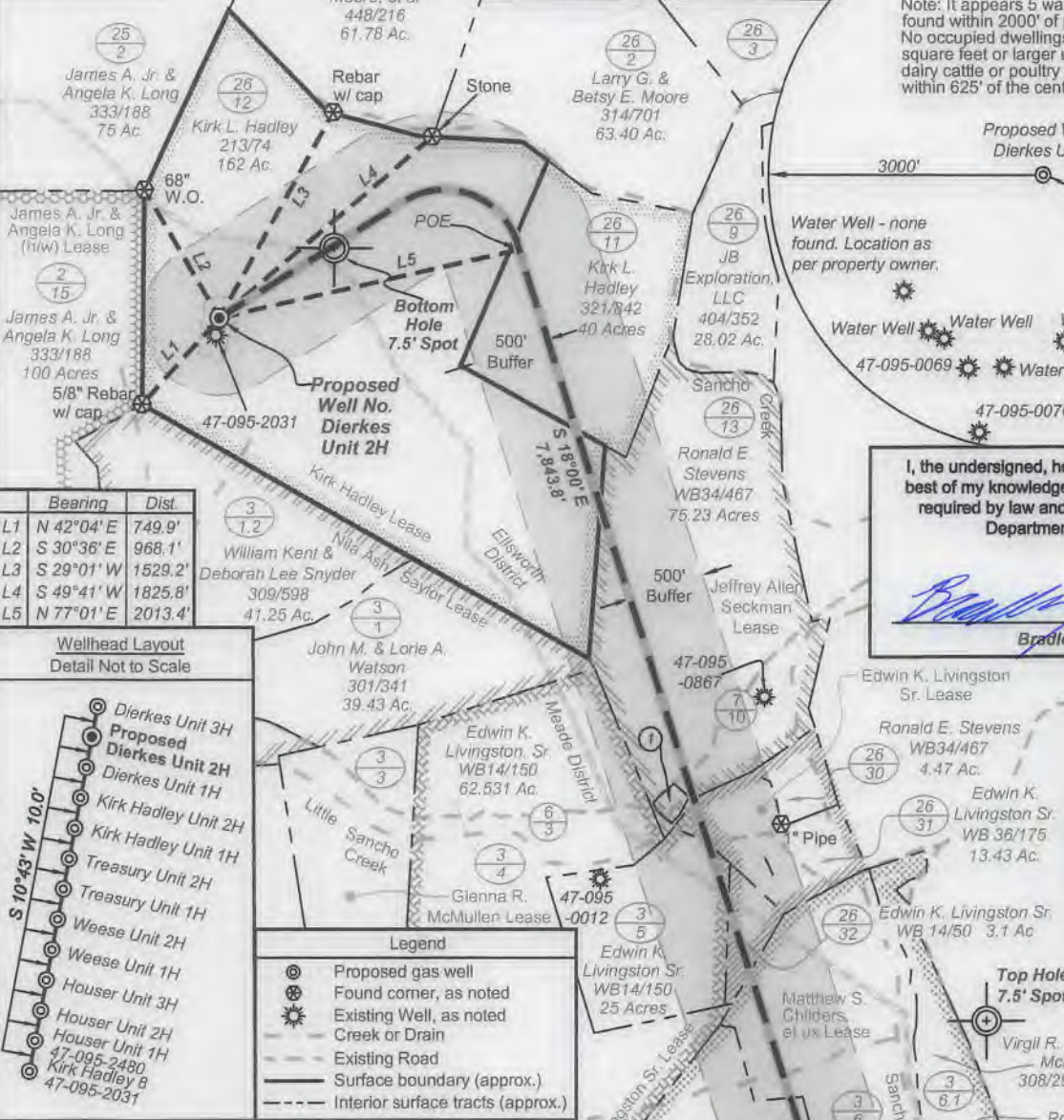
4,608' to Top Hole
TOP HOLE LATITUDE 39 - 30 - 00
BOTTOM HOLE LATITUDE 39 - 27 - 30

TOP HOLE LONGITUDE 80 - 55 - 00
BOTTOM HOLE LONGITUDE 80 - 52 - 30
4,888' to Bottom Hole
13,238' to Top Hole

Antero Resources
Well No. Dierkes Unit 2H
Antero Resources Corporation

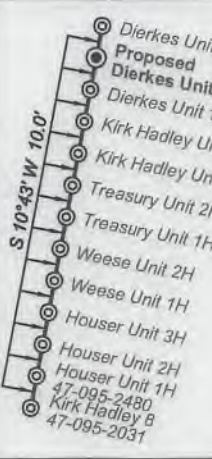
(+•) Denotes Location of Well on United States Topographic Maps

Notes:
Well No. Dierkes Unit 2H
UTM Zone 17, NAD 1927
Top Hole Coordinates
N: 14,330,688.19' E: 1,659,539.29'
Point of Entry Coordinates
N: 14,331,172.88' E: 1,661,492.78'
Bottom Hole Coordinates
N: 14,323,756.82' E: 1,664,039.31'



Bearing	Dist.
L1 N 42°04' E	749.9'
L2 S 30°36' E	968.1'
L3 S 29°01' W	1529.2'
L4 S 49°41' W	1825.8'
L5 N 77°01' E	2013.4'

Wellhead Layout
Detail Not to Scale



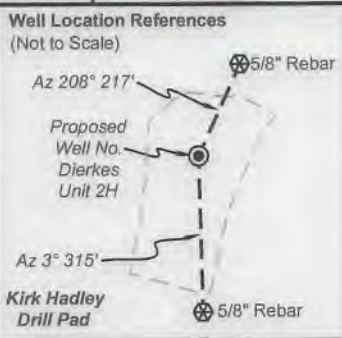
- Legend**
- Proposed gas well
 - Found corner, as noted
 - Existing Well, as noted
 - Creek or Drain
 - Existing Road
 - Surface boundary (approx.)
 - Interior surface tracts (approx.)

Notes:
West Virginia Coordinate System of 1927, North Zone based upon Differential GPS Measurements.
Well No. Dierkes Unit 2H Top Hole coordinates are
N: 354,135.11' Latitude: 39°27'48.46"
E: 1,595,643.67' Longitude: 80°55'56.09"
Bottom Hole coordinates are
N: 347,127.17' Latitude: 39°26'39.88"
E: 1,800,028.87' Longitude: 80°54'58.77"
UTM Zone 17, NAD 1983
Top Hole Coordinates N: 4,368,220.075m E: 505,843.055m
Bottom Hole Coordinates N: 4,366,107.420m E: 507,214.660m
Plat orientation and corner and well references are based upon the grid north meridian.
Well location references are based upon the magnetic meridian.

TM. Par.	Bk/Pg	Acres	Owner(s)
1 TM.26 Par.13.1	245/40	0.769	James & Connie Hardesty

I, the undersigned, hereby certify that this plat is correct to the best of my knowledge and belief and shows all the information required by law and the rules issued and prescribed by the Department of Environmental Protection.

Bradley D. Miller
Bradley D. Miller, P.S. 2167



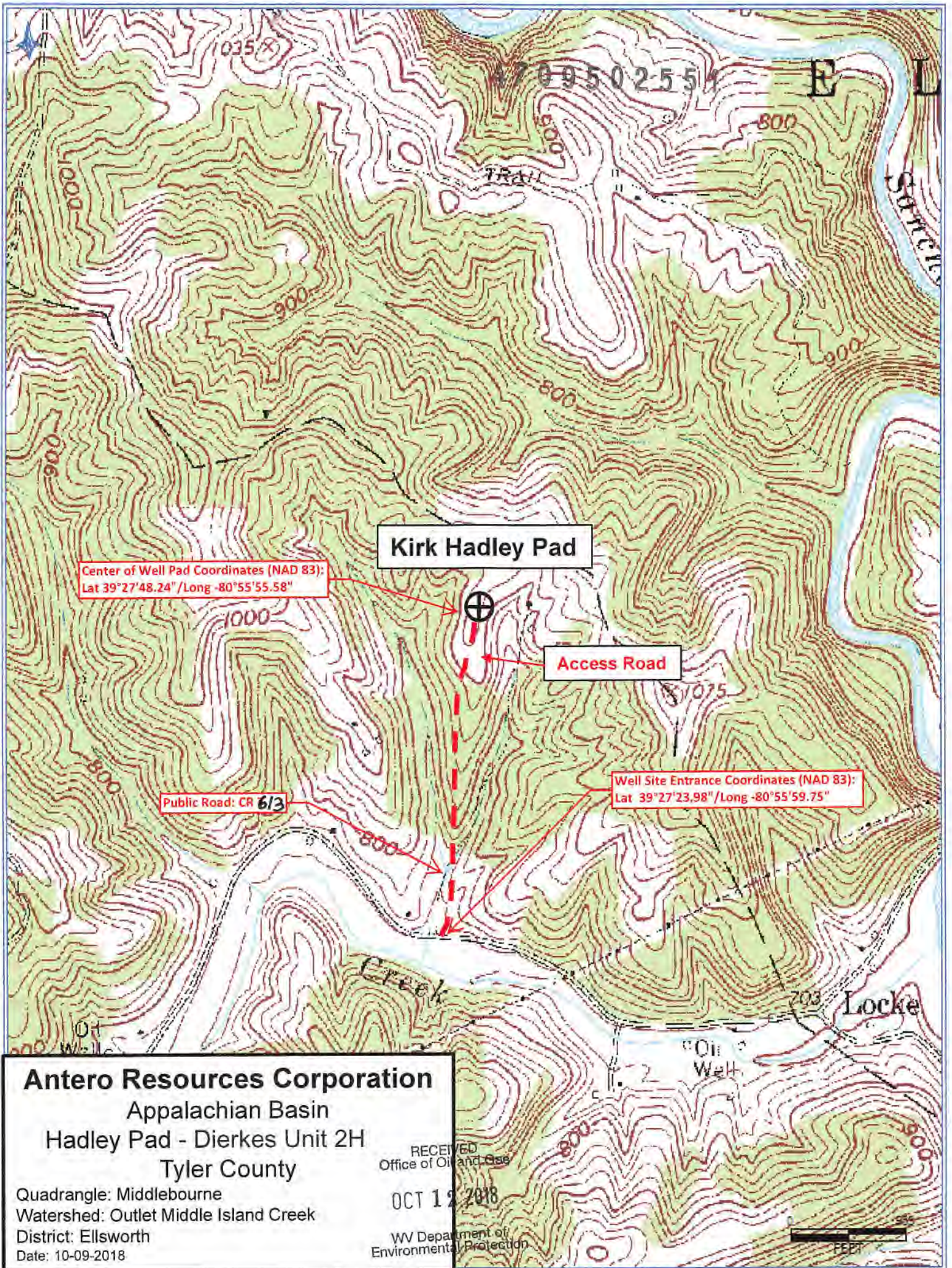
FILE NO: 216-54-M-16
DRAWING NO: Dierkes 2H Well Plat
SCALE: 1" = 1200'
MINIMUM DEGREE OF ACCURACY: Submeter
PROVEN SOURCE OF ELEVATION: WVDOT, Harrisville, WV

STATE OF WEST VIRGINIA
DEPARTMENT OF ENVIRONMENTAL PROTECTION
OIL AND GAS DIVISION

DATE: October 5 2018
OPERATOR'S WELL NO. Dierkes Unit 2H
API WELL NO
47 - 095 - 02551
STATE COUNTY PERMIT

WELL TYPE: OIL GAS LIQUID INJECTION WASTE DISPOSAL
(IF GAS) PRODUCTION: STORAGE DEEP SHALLOW
LOCATION: ELEVATION: As-Built 912' WATERSHED: Outlet Middle Island Creek QUADRANGLE: Middlebourne
DISTRICT: Meade & Ellsworth COUNTY: Tyler
SURFACE OWNER: Kirk L. Hadley Donald R. & Delores Baker (h/w); Jeffrey Allen Seckman; ACREAGE: 162 202; 79; 69; 21; 172.101;
ROYALTY OWNER: Kirk Hadley; Edwin K. Livingston Sr.(2); Matthew S. Childers, et ux; LEASE NO: ACREAGE: 89.49375;
PROPOSED WORK: DRILL CONVERT DRILL DEEPER FRACTURE OR STIMULATE PLUG OFF OLD FORMATION
 PERFORATE NEW FORMATION OTHER PHYSICAL CHANGE IN WELL (SPECIFY) 6,700' TVD
 PLUG AND ABANDON CLEAN OUT AND REPLUG TARGET FORMATION: Marcellus Shale ESTIMATED DEPTH: 16,800' MD

WELL OPERATOR: Antero Resources Corporation DESIGNATED AGENT: Dianna Stamper - CT Corporation System
ADDRESS: 1615 Wynkoop Street ADDRESS: 5400 D Big Tyler Road
Denver, CO 80202 Charleston, WV 25313



Center of Well Pad Coordinates (NAD 83):
Lat 39°27'48.24"/Long -80°55'55.58"

Kirk Hadley Pad

Access Road

Public Road: CR 613

Well Site Entrance Coordinates (NAD 83):
Lat 39°27'23.98"/Long -80°55'59.75"

Antero Resources Corporation
Appalachian Basin
Hadley Pad - Dierkes Unit 2H
Tyler County

Quadrangle: Middlebourne
Watershed: Outlet Middle Island Creek
District: Ellsworth
Date: 10-09-2018

RECEIVED
Office of Oil and Gas

OCT 12 2018

WV Department of
Environmental Protection

0 50 100
FEET