



# ANTERO RESOURCES CORPORATION



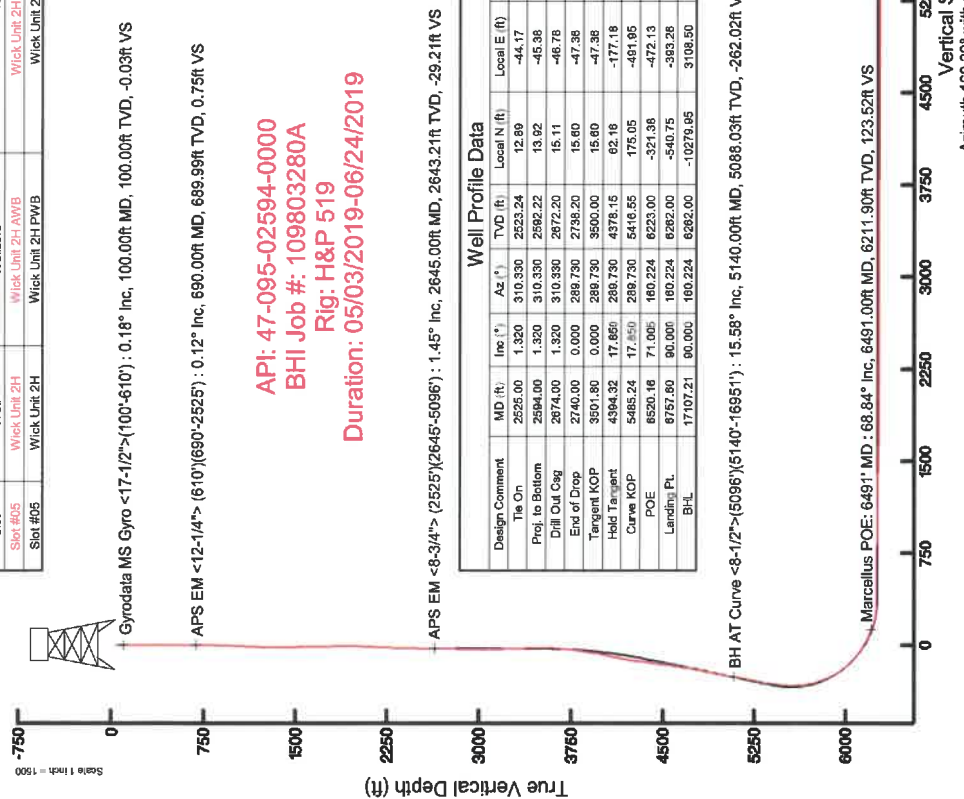
Location: Tyler County, WV  
Field: Tyler  
Facility: Gorrell Pad

Slot: Slot #05  
Well: Wick Unit 2H  
Wellbore: Wick Unit 2H PWB

Plot reference wellbore is Wick Unit 2H PWP Rev-C-0  
True vertical depths are referenced to H&P 519 (RKB)  
Measured depths are referenced to H&P 519 (RKB)  
H&P 519 (RKB) to Mean Sea Level: 1075 feet  
Mean Sea Level to Ground level (A) Slot: Slot #05: -1045 feet  
Coordinates are in feet referenced to Slot

Location Information			
Facility Name	Grid North (US ft)	Latitude	Longitude
Gorrell Pad	14314301.475	39°25'06.502"N	80°59'25.355"W
Slot #05	1643734.326	39°25'06.502"N	80°59'25.355"W
H&P 519 (RKB)	1643132.599	39°25'06.000"N	80°59'25.380"W
Mean Sea Level to Ground level (A) Slot: Slot #05	-1045 ft		
H&P 519 (RKB) to Mean Sea Level	1075 ft		

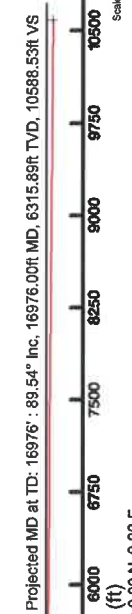
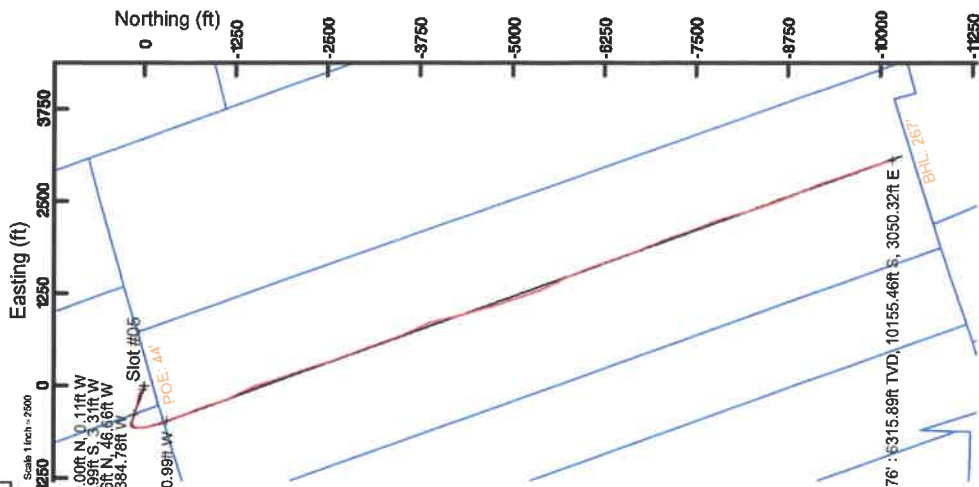
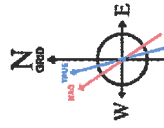
Well Data			
Slot	Well	Wellbore	Wellpath
Slot #05	Wick Unit 2H	Wick Unit 2H PWB	Wick Unit 2H AWP Prob: 16976
Slot #05	Wick Unit 2H	Wick Unit 2H PWB	Wick Unit 2H PWP Rev-C-0



API: 47-095-02594-0000  
BHI Job #: 109803280A  
Rig: H&P 519  
Duration: 05/03/2019-06/24/2019

Well Profile Data						
Design Comment	MD (ft)	Inc (°)	Az (°)	TVD (ft)	Local N (ft)	Local E (ft)
The On	2525.00	1.320	310.330	2523.24	12.89	-44.17
Prof. to Bottom	2594.00	1.320	310.330	2592.22	13.92	-45.36
Drill Out Csg	2740.00	0.000	289.730	2738.20	15.11	-46.78
End of Drop	2740.00	0.000	289.730	2738.20	15.60	-47.38
Tangent KOP	3501.80	0.000	289.730	3500.00	15.60	-47.38
Hold Target	4394.32	17.860	289.730	4378.15	62.16	-177.18
Curve KOP	5485.24	17.850	289.730	5416.55	175.05	-491.95
POE	6520.16	160.224	160.224	6223.00	-321.98	-472.13
Landing PL	6757.90	90.000	160.224	6282.00	-540.75	-383.28
BH-L	17107.21	90.000	160.224	6282.00	-10279.95	3108.50
						10725.37

User specified (HDGM) Dip: 66.47° Field: 5771 nT  
Magnetic declination for this well is 10.00° East (at 01/17/2019)  
Grid North is 0.01° more East than True North  
To correct azimuth from True to Grid subtract 0.01 degrees  
To correct azimuth from Magnetic to Grid subtract 7.82 degrees





# Actual Wellpath Report

Wick Unit 2H AWP Proj: 16976'

Page 1 of 11



## REFERENCE WELLPATH IDENTIFICATION

Operator	ANTERO RESOURCES CORPORATION	Slot	Slot #05
Area	Tyler County, WV	Well	Wick Unit 2H
Field	Tyler	Wellbore	Wick Unit 2H AWB
Facility	Gorrell Pad		

## REPORT SETUP INFORMATION

Projection System	NAD27 / UTM Zone 17 North, US feet	Software System	WellArchitect® 5.1
North Reference	Grid	User	Delaset
Scale	0.999600	Report Generated	7/3/2019 at 8:38:43 PM
Convergence at slot	0.01° East	Database/Source file	WA_MPL_EasternUS_DefnWick_Unit_2H_AWP_Proj_16976_.xml

## WELLPATH LOCATION

	Local coordinates		Grid coordinates		Geographic coordinates	
	North [ft]	East [ft]	Easting [US ft]	Northing [US ft]	Latitude	Longitude
Slot Location	9.92	-1.73	1643132.60	14314311.39	39°25'06.600"N	80°59'25.380"W
Facility Reference Pt			1643134.33	14314301.48	39°25'06.502"N	80°59'25.358"W
Field Reference Pt			0.00	0.00	0°00'00.000"	85°29'19.301"W

## WELLPATH DATUM

Calculation method	Minimum curvature	H&P 519 (RKB) to Facility Vertical Datum	30.00ft
Horizontal Reference Pt	Slot	H&P 519 (RKB) to Mean Sea Level	1075.00ft
Vertical Reference Pt	H&P 519 (RKB)	H&P 519 (RKB) to Ground Level at Slot (Slot #05)	30.00ft
MD Reference Pt	H&P 519 (RKB)	Section Origin	N 0.00, E 0.00 ft
Field Vertical Reference	Mean Sea Level	Section Azimuth	160.22°



# Actual Wellpath Report

Wick Unit 2H AWP Proj: 16976'

Page 2 of 11



## REFERENCE WELLPATH IDENTIFICATION

Operator	Slot	Slot #05
ANTERO RESOURCES CORPORATION	Well	Wick Unit 2H
Tyler County, WV	Wellbore	Wick Unit 2H AWB
Tyler		
Gorrell Pad		

## WELLPATH DATA (206 stations) † = interpolated/extrapolated station

MD (ft)	Inclination (°)	Azimuth (°)	TVD (ft)	Vert Sect (ft)	North (ft)	East (ft)	Grid East (US ft)	Grid North (US ft)	Latitude	Longitude	Closure Dist (ft)	Closure Dir (°)	DLS (°/100ft)	Build Rate (°/100ft)	Turn Rate (°/100ft)	Comments
0.00	0.000	267.460	0.00	0.00	0.00	0.00	1643132.60	14314311.39	39°25'06.600"N	80°59'25.380"W	0.00	0.000	0.00	0.00	0.00	
30.00	0.000	267.460	30.00	0.00	0.00	0.00	1643132.60	14314311.39	39°25'06.600"N	80°59'25.380"W	0.00	0.000	0.00	0.00	0.00	
100.00	0.180	267.460	100.00	-0.03	0.00	-0.11	1643132.49	14314311.38	39°25'06.600"N	80°59'25.381"W	0.11	267.460	0.26	0.00	0.26	-132.20 Gyrodata MS Gyro <17-1/2">(100'-610')
125.00	0.180	263.150	125.00	-0.05	-0.01	-0.19	1643132.41	14314311.38	39°25'06.600"N	80°59'25.382"W	0.19	266.562	0.05	0.00	-17.24	
150.00	0.190	260.390	150.00	-0.07	-0.02	-0.27	1643132.33	14314311.36	39°25'06.600"N	80°59'25.383"W	0.27	265.115	0.05	0.00	-11.04	
175.00	0.090	244.560	175.00	-0.07	-0.04	-0.33	1643132.27	14314311.35	39°25'06.600"N	80°59'25.384"W	0.33	263.318	0.43	-0.40	-63.32	
200.00	0.150	264.240	200.00	-0.08	-0.05	-0.38	1643132.22	14314311.34	39°25'06.600"N	80°59'25.385"W	0.38	262.446	0.29	0.24	78.72	
225.00	0.210	235.740	225.00	-0.08	-0.08	-0.45	1643132.15	14314311.31	39°25'06.599"N	80°59'25.387"W	0.45	259.977	0.42	0.24	-114.00	
250.00	0.250	234.480	250.00	-0.05	-0.14	-0.53	1643132.07	14314311.25	39°25'06.599"N	80°59'25.387"W	0.55	255.542	0.16	0.16	-5.04	
275.00	0.320	240.920	275.00	-0.02	-0.20	-0.63	1643131.96	14314311.18	39°25'06.598"N	80°59'25.388"W	0.67	252.339	0.31	0.28	25.76	
300.00	0.360	239.720	300.00	0.00	-0.28	-0.76	1643131.84	14314311.11	39°25'06.597"N	80°59'25.390"W	0.81	250.152	0.16	0.16	-4.80	
325.00	0.420	236.390	325.00	0.03	-0.36	-0.91	1643131.69	14314311.02	39°25'06.596"N	80°59'25.392"W	0.98	248.228	0.24	0.24	-5.32	
350.00	0.380	239.120	350.00	0.07	-0.45	-1.06	1643131.54	14314310.93	39°25'06.596"N	80°59'25.393"W	1.15	246.796	0.16	-0.16	2.92	
375.00	0.380	242.360	375.00	0.10	-0.53	-1.20	1643131.40	14314310.85	39°25'06.595"N	80°59'25.395"W	1.32	246.035	0.09	0.00	12.96	
400.00	0.410	237.060	400.00	0.13	-0.62	-1.35	1643131.25	14314310.77	39°25'06.594"N	80°59'25.397"W	1.49	245.293	0.19	0.12	-21.20	
425.00	0.460	240.120	425.00	0.17	-0.72	-1.51	1643131.09	14314310.67	39°25'06.593"N	80°59'25.399"W	1.68	244.546	0.22	0.20	12.24	
450.00	0.450	236.940	449.99	0.21	-0.82	-1.68	1643130.92	14314310.56	39°25'06.592"N	80°59'25.401"W	1.87	243.912	0.11	-0.04	-12.72	
475.00	0.490	230.860	474.99	0.26	-0.95	-1.85	1643130.75	14314310.44	39°25'06.591"N	80°59'25.404"W	2.08	242.917	0.26	0.16	-24.32	
500.00	0.410	233.010	499.99	0.33	-1.07	-2.00	1643130.60	14314310.32	39°25'06.589"N	80°59'25.406"W	2.27	241.965	0.33	-0.32	8.60	
525.00	0.320	232.460	524.99	0.39	-1.19	-2.16	1643130.44	14314310.20	39°25'06.588"N	80°59'25.408"W	2.47	241.207	0.44	0.44	-2.20	
550.00	0.580	229.040	549.99	0.47	-1.34	-2.35	1643130.25	14314310.05	39°25'06.587"N	80°59'25.410"W	2.71	240.277	0.27	0.24	-13.68	
575.00	0.620	237.250	574.99	0.54	-1.50	-2.56	1643130.04	14314309.89	39°25'06.585"N	80°59'25.413"W	2.97	239.662	0.38	0.16	32.84	
600.00	0.630	236.620	599.99	0.61	-1.65	-2.79	1643129.81	14314309.74	39°25'06.584"N	80°59'25.416"W	3.24	239.433	0.05	0.04	-2.52	
610.00	0.620	236.970	609.99	0.63	-1.71	-2.88	1643129.72	14314309.68	39°25'06.583"N	80°59'25.417"W	3.35	239.347	0.11	-0.10	3.50	
690.00	0.120	234.270	689.99	0.75	-1.99	-3.31	1643129.29	14314309.40	39°25'06.580"N	80°59'25.422"W	3.86	238.970	0.83	-0.62	-3.37 APS EM <12-7/4"> (610'X690'-2525')	
721.00	0.640	233.830	720.98	0.81	-2.11	-3.48	1643129.12	14314309.28	39°25'06.579"N	80°59'25.424"W	4.07	238.714	1.68	1.66	-1.42	
812.00	2.240	290.140	811.96	-0.19	-1.80	-5.56	1643127.05	14314309.59	39°25'06.582"N	80°59'25.451"W	5.84	252.051	2.15	1.76	61.88	
903.00	4.120	289.050	902.81	-3.38	-0.12	-10.32	1643122.29	14314311.27	39°25'06.599"N	80°59'25.511"W	10.32	269.332	2.07	2.07	-1.20	
994.00	4.730	285.970	993.54	-7.62	1.98	-17.01	1643115.59	14314313.36	39°25'06.620"N	80°59'25.597"W	17.13	276.835	0.72	0.67	-3.38	
1086.00	5.240	284.330	1085.19	-12.19	4.06	-24.73	1643107.88	14314315.45	39°25'06.640"N	80°59'25.695"W	25.06	279.329	0.58	0.55	-1.78	



# Actual Wellpath Report

Wick Unit 2H AWP Proj: 16976'

Page 3 of 11



## REFERENCE WELLPATH IDENTIFICATION

Operator	ANTERO RESOURCES CORPORATION	Slot	Slot #05
Area	Tyler County, WV	Well	Wick Unit 2H
Field	Tyler	Wellbore	Wick Unit 2H AWB
Facility	Gorrell Pad		

## WELLPATH DATA (206 stations)

MD (ft)	Inclination (°)	Azimuth (°)	TVD (ft)	Vert Sect (ft)	North (ft)	East (ft)	Grid East (US ft)	Grid North (US ft)	Latitude	Longitude	Closure Dist (ft)	Closure Dir (°)	DLS (ft/100ft)	Build Rate (ft/100ft)	Turn Rate (ft/100ft)	Comments
1177.00	4.020	277.440	1175.89	-15.98	5.50	-31.92	1643100.69	14314316.89	39°25'06.654"N	80°59'25.787"W	32.39	278.783	1.47	-1.34	-7.57	
1269.00	2.050	266.500	1267.76	-17.92	5.82	-36.76	1643095.85	14314317.21	39°25'06.658"N	80°59'25.848"W	37.22	278.998	2.22	-2.14	-11.89	
1364.00	1.850	246.650	1362.71	-18.30	5.11	-39.86	1643092.75	14314316.49	39°25'06.651"N	80°59'25.888"W	40.19	277.304	0.74	-0.21	-20.89	
1458.00	1.610	219.850	1456.67	-17.54	3.49	-42.10	1643090.51	14314314.88	39°25'06.635"N	80°59'25.916"W	42.25	274.744	0.89	-0.28	-28.51	
1553.00	1.310	195.610	1551.64	-15.98	1.42	-43.25	1643089.37	14314312.81	39°25'06.614"N	80°59'25.931"W	43.27	271.886	0.72	-0.32	-25.52	
1647.00	1.210	183.420	1645.61	-14.19	-0.60	-43.60	1643089.02	14314310.79	39°25'06.594"N	80°59'25.936"W	43.60	269.209	0.30	-0.11	-12.97	
1742.00	0.940	149.920	1740.60	-12.50	-2.28	-43.27	1643089.35	14314309.11	39°25'06.578"N	80°59'25.931"W	43.33	266.987	0.71	-0.28	-35.26	
1836.00	1.290	126.140	1834.58	-10.86	-3.57	-42.03	1643090.59	14314307.82	39°25'06.565"N	80°59'25.916"W	42.18	265.147	0.61	0.37	-25.30	
1931.00	0.860	60.210	1929.57	-10.07	-3.93	-40.89	1643091.93	14314307.46	39°25'06.561"N	80°59'25.898"W	40.88	264.487	1.25	-0.66	-69.40	
2025.00	1.710	3.750	2023.55	-11.45	-2.26	-40.13	1643092.49	14314309.13	39°25'06.578"N	80°59'25.891"W	40.19	266.778	1.55	1.12	-60.06	
2120.00	2.430	0.900	2118.49	-14.64	1.17	-40.00	1643092.61	14314312.56	39°25'06.612"N	80°59'25.890"W	40.02	271.674	0.77	0.78	-3.00	
2215.00	2.920	357.040	2213.38	-18.84	5.60	-40.10	1643092.52	14314316.98	39°25'06.655"N	80°59'25.891"W	40.49	277.950	0.55	0.52	-4.06	
2309.00	1.780	342.760	2307.30	-22.59	9.39	-40.65	1643091.96	14314320.77	39°25'06.693"N	80°59'25.898"W	41.72	283.000	1.35	-1.21	-15.19	
2404.00	1.260	312.310	2402.27	-24.99	11.50	-41.86	1643090.75	14314322.88	39°25'06.714"N	80°59'25.913"W	43.41	285.368	0.99	-0.55	-32.05	
2499.00	1.320	290.750	2497.25	-26.62	12.59	-43.66	1643088.96	14314323.97	39°25'06.724"N	80°59'25.936"W	45.44	286.084	0.51	0.06	-22.69	
2525.00	1.320	310.330	2523.24	-27.07	12.89	-44.17	1643088.45	14314324.27	39°25'06.727"N	80°59'25.943"W	46.01	286.268	1.73	0.00	75.31	
2645.00	1.450	288.400	2643.21	-29.21	14.26	-46.66	1643085.96	14314325.64	39°25'06.741"N	80°59'25.975"W	48.79	286.996	0.45	0.11	-18.28	APS EM <8-3/4" > (2525)-(2645--5096)
2740.00	1.330	287.430	2738.18	-30.62	14.97	-48.85	1643083.77	14314326.35	39°25'06.748"N	80°59'26.002"W	51.10	287.038	0.13	-0.13	-1.02	
2834.00	1.430	282.760	2832.15	-31.91	15.56	-51.04	1643081.58	14314326.94	39°25'06.754"N	80°59'26.030"W	53.36	286.952	0.16	0.11	-4.97	
2929.00	1.500	288.740	2927.12	-32.94	15.79	-53.44	1643079.18	14314327.17	39°25'06.756"N	80°59'26.061"W	55.72	286.464	0.38	0.07	-14.76	
3024.00	1.450	273.450	3022.09	-33.81	15.84	-55.88	1643076.74	14314327.22	39°25'06.757"N	80°59'26.092"W	58.08	285.823	0.14	-0.09	4.96	
3118.00	1.180	182.040	3116.07	-33.38	14.94	-57.10	1643075.52	14314326.32	39°25'06.748"N	80°59'26.108"W	59.02	284.663	2.01	-0.29	-97.24	
3212.00	1.640	166.110	3210.04	-31.15	12.67	-56.81	1643075.81	14314324.05	39°25'06.725"N	80°59'26.104"W	58.21	282.570	0.64	0.49	-16.95	
3307.00	1.490	164.400	3305.01	-28.56	10.16	-56.15	1643076.47	14314321.54	39°25'06.678"N	80°59'26.096"W	57.07	280.254	0.17	-0.16	-1.80	
3401.00	1.760	140.450	3398.97	-25.99	7.87	-54.91	1643077.71	14314319.25	39°25'06.678"N	80°59'26.080"W	56.47	278.155	0.77	0.23	-25.48	
3498.00	1.400	111.240	3495.94	-23.81	6.29	-52.85	1643079.77	14314317.67	39°25'06.662"N	80°59'26.053"W	53.23	276.787	0.90	-0.37	-30.11	
3591.00	3.300	10.500	3588.88	-25.37	8.51	-51.31	1643081.31	14314319.90	39°25'06.684"N	80°59'26.034"W	52.01	279.420	4.10	2.04	-108.32	
3685.00	5.120	354.850	3682.62	-31.77	15.35	-51.19	1643081.43	14314326.73	39°25'06.752"N	80°59'26.032"W	53.44	286.692	2.27	1.94	-16.65	
3780.00	7.130	332.450	3777.09	-41.71	24.80	-54.30	1643078.32	14314336.18	39°25'06.845"N	80°59'26.072"W	59.69	294.549	3.25	2.12	-23.58	
3875.00	9.800	319.630	3871.06	-55.13	36.19	-62.26	1643070.36	14314347.56	39°25'06.958"N	80°59'26.173"W	72.02	300.168	3.43	2.81	-13.49	



# Actual Wellpath Report

Wick Unit 2H AWP Proj: 16976'

Page 4 of 11



## REFERENCE WELLPATH IDENTIFICATION

Operator	ANTERO RESOURCES CORPORATION	Slot	Slot #05
Area	Tyler County, WV	Well	Wick Unit 2H
Field	Tyler	Wellbore	Wick Unit 2H AWB
Facility	Gorrell Pad		

## WELLPATH DATA (206 stations) † = interpolated/extrapolated station

MD (ft)	Inclination (°)	Azimuth (°)	TVD (ft)	Vert Sect (ft)	North (ft)	East (ft)	Grid East (US ft)	Grid North (US ft)	Latitude	Longitude	Closure Dist (ft)	Closure Dir (°)	DLS (ft/100ft)	Build Rate (ft/100ft)	Turn Rate (ft/100ft)	Comments
3969.00	12.640	306.790	3963.26	-71.20	48.45	-75.69	1643056.94	14314359.82	39°25'07.079"N	80°59'26.344"W	89.87	302.625	4.01	3.02	-13.66	
4064.00	14.190	301.050	4055.67	-88.91	60.68	-93.99	1643038.65	14314372.04	39°25'07.200"N	80°59'26.578"W	111.88	302.848	2.15	1.63	-6.04	
4158.00	16.000	292.320	4146.44	-106.53	71.55	-115.85	1643016.80	14314382.91	39°25'07.307"N	80°59'26.856"W	136.16	301.699	3.09	1.93	-9.29	
4252.00	17.130	281.130	4236.56	-122.33	79.14	-141.42	1642991.23	14314390.50	39°25'07.382"N	80°59'27.182"W	162.06	299.232	3.59	1.20	-11.90	
4346.00	17.090	276.600	4326.40	-135.58	83.40	-168.73	1642963.94	14314394.76	39°25'07.424"N	80°59'27.530"W	188.22	296.303	1.42	-0.04	-4.82	
4437.00	16.290	279.260	4413.57	-147.72	86.99	-194.61	1642938.07	14314398.34	39°25'07.460"N	80°59'27.860"W	213.17	294.085	1.22	-0.88	2.92	
4531.00	16.050	277.180	4503.85	-160.01	90.74	-220.51	1642912.18	14314402.09	39°25'07.497"N	80°59'28.190"W	238.45	292.367	0.67	-0.26	-2.21	
4626.00	14.800	282.140	4595.43	-172.38	94.93	-245.41	1642887.29	14314406.28	39°25'07.539"N	80°59'28.507"W	263.13	291.148	1.91	-1.32	5.22	
4720.00	16.390	286.230	4685.97	-186.52	101.16	-269.88	1642862.83	14314412.51	39°25'07.600"N	80°59'28.819"W	288.22	290.548	2.06	1.69	4.35	
4814.00	17.550	291.340	4775.88	-203.64	110.03	-295.82	1642836.90	14314421.37	39°25'07.688"N	80°59'29.149"W	315.62	290.403	2.01	1.23	5.44	
4908.00	17.180	290.000	4865.60	-221.85	119.93	-322.06	1642810.67	14314431.27	39°25'07.786"N	80°59'29.484"W	343.67	290.425	0.58	-0.39	-1.43	
5002.00	16.800	288.430	4955.50	-239.13	128.98	-348.00	1642784.74	14314440.31	39°25'07.875"N	80°59'29.814"W	371.13	290.336	0.63	-0.40	-1.67	
5096.00	15.930	285.830	5045.69	-255.05	136.79	-373.29	1642759.45	14314448.12	39°25'07.952"N	80°59'30.136"W	397.57	290.125	1.21	-0.93	-2.77	
5140.00	15.580	286.050	5088.03	-262.02	140.07	-384.78	1642747.97	14314451.40	39°25'07.985"N	80°59'30.283"W	409.48	290.003	0.81	-0.80	0.50	BH AT Curve <-8-1/2"> (5096)-(5140)-16951'
5219.00	16.340	284.540	5163.99	-274.50	145.79	-405.74	1642727.03	14314457.12	39°25'08.041"N	80°59'30.550"W	431.13	289.765	1.10	0.96	-1.91	
5312.00	18.550	284.090	5252.71	-290.12	152.68	-432.75	1642700.02	14314464.01	39°25'08.109"N	80°59'30.894"W	458.69	289.434	2.38	2.38	-0.48	
5406.00	17.370	284.090	5342.12	-306.27	159.74	-460.86	1642671.92	14314471.06	39°25'08.179"N	80°59'31.252"W	487.76	289.117	1.26	-1.26	0.00	
5499.00	16.290	282.600	5431.14	-321.00	165.96	-487.06	1642645.74	14314477.28	39°25'08.241"N	80°59'31.586"W	514.56	288.816	1.25	-1.16	-1.60	
5592.00	13.550	263.870	5521.05	-330.56	167.65	-510.64	1642622.17	14314478.97	39°25'08.257"N	80°59'31.886"W	537.45	288.175	5.93	-2.95	-20.14	
5686.00	13.660	236.020	5612.51	-330.43	160.26	-530.81	1642602.00	14314471.58	39°25'08.184"N	80°59'32.143"W	554.48	286.800	6.91	0.12	-29.63	
5779.00	17.180	207.050	5702.28	-318.32	141.86	-546.19	1642586.63	14314453.19	39°25'08.003"N	80°59'32.339"W	564.31	284.559	8.98	3.78	-31.15	
5873.00	22.100	195.150	5790.82	-294.30	112.39	-557.14	1642575.69	14314423.74	39°25'07.711"N	80°59'32.479"W	568.36	281.405	6.72	5.23	-12.66	
5967.00	28.260	183.170	5875.90	-259.26	73.04	-563.00	1642569.83	14314384.40	39°25'07.322"N	80°59'32.554"W	567.72	277.392	8.48	6.55	-12.74	
6061.00	35.560	174.450	5955.68	-212.18	23.53	-561.58	1642571.24	14314334.90	39°25'06.833"N	80°59'32.536"W	562.08	272.399	9.17	7.77	-9.28	
6154.00	42.920	167.650	6027.69	-154.46	-34.43	-562.18	1642580.64	14314276.97	39°25'06.260"N	80°59'32.416"W	553.25	266.432	9.16	7.91	-7.31	
6249.00	50.350	163.250	6092.90	-85.75	-101.16	-534.69	1642598.12	14314210.27	39°25'05.601"N	80°59'32.193"W	544.17	259.287	8.51	7.82	-4.63	
6289.00†	52.068	163.013	6105.43	-70.19	-116.08	-530.17	1642602.65	14314195.36	39°25'05.453"N	80°59'32.135"W	542.72	257.650	8.64	8.59	-1.19	Middlesex: 6269' MD
6342.00	58.340	162.230	6147.06	-10.32	-173.25	-512.25	1642620.55	14314138.20	39°25'04.888"N	80°59'31.907"W	540.76	251.314	8.64	8.59	-1.07	
6433.00†	65.862	161.958	6189.61	70.00	-249.72	-487.54	1642645.25	14314061.76	39°25'04.132"N	80°59'31.592"W	547.77	242.878	8.27	8.27	-0.30	Burkett: 6433' MD
6436.00	66.116	161.950	6190.83	72.74	-252.33	-486.69	1642646.10	14314059.16	39°25'04.107"N	80°59'31.582"W	548.21	242.595	8.27	8.27	-0.28	



# Actual Wellpath Report

Wick Unit 2H AWP Proj: 16976'

Page 5 of 11



## REFERENCE WELLPATH IDENTIFICATION

Operator	Slot	Slot #05
ANTERO RESOURCES CORPORATION	Well	Wick Unit 2H
Tyler County, WV	Wellbore	Wick Unit 2H AWB
Tyler		
Gorrell Pad		

## WELLPATH DATA (206 stations) † = interpolated/extrapolated station

MD (ft)	Inclination (°)	Azimuth (°)	TVD (ft)	Vert Sect (ft)	North (ft)	East (ft)	Grid East (US ft)	Grid North (US ft)	Latitude (°)	Longitude (°)	Closure Dist (ft)	Closure Dir (°)	DLS (1/100ft)	Build Rate (1/100ft)	Turn Rate (1/100ft)	Comments
6480.00†	68.296	162.028	6207.88	113.28	-290.90	-474.15	164268.64	14314020.80	39°25'03.725"N	80°59'31.422"W	556.27	238.470	4.97	4.97	0.17	Tully: 6480' MD
6491.00†	68.842	162.045	6211.90	123.52	-300.64	-470.99	1642681.80	14314010.87	39°25'03.629"N	80°59'31.382"W	558.78	237.449	4.97	4.97	0.17	Marcellus POE: 6491' MD
6530.00	70.780	162.110	6225.36	160.10	-335.47	-459.73	1642673.06	14313976.05	39°25'03.285"N	80°59'31.238"W	569.11	233.881	4.97	4.97	0.17	
6577.00	74.320	162.040	6239.45	204.91	-378.12	-445.93	1642666.85	14313933.42	39°25'02.863"N	80°59'31.062"W	584.66	229.704	7.53	7.53	-0.15	
6624.00	79.260	161.830	6250.19	250.63	-421.61	-431.74	1642701.03	14313889.95	39°25'02.433"N	80°59'30.882"W	603.45	225.681	10.52	10.51	-0.45	
6671.00	85.320	162.060	6256.49	297.16	-465.87	-417.32	1642715.45	14313845.70	39°25'01.996"N	80°59'30.698"W	625.45	221.853	12.90	12.89	0.48	
6718.00	89.780	161.380	6258.50	344.09	-510.45	-402.59	1642730.17	14313801.15	39°25'01.555"N	80°59'30.510"W	650.10	218.263	9.60	9.49	-1.45	
6812.00	90.180	158.410	6258.53	438.08	-598.71	-370.28	1642762.46	14313712.92	39°25'01.683"N	80°59'30.099"W	703.96	211.736	3.19	0.43	-3.16	
6907.00	90.520	157.090	6257.95	532.98	-686.63	-334.31	1642798.42	14313625.03	39°24'59.814"N	80°59'29.641"W	763.69	205.961	1.43	0.36	-1.39	
7001.00	89.540	158.350	6257.90	626.89	-773.61	-298.68	1642834.04	14313538.09	39°24'58.954"N	80°59'29.187"W	829.26	201.111	1.70	-1.04	1.34	
7096.00	89.480	161.300	6258.72	721.87	-862.77	-265.92	1642866.79	14313448.97	39°24'58.073"N	80°59'28.769"W	902.82	197.130	3.11	-0.06	3.11	
7190.00	89.690	164.030	6259.40	815.78	-952.49	-237.91	1642894.78	14313359.28	39°24'57.186"N	80°59'28.413"W	981.75	194.024	2.91	0.22	2.90	
7285.00	89.350	162.410	6260.19	910.64	-1043.44	-210.49	1642922.20	14313268.37	39°24'56.287"N	80°59'28.063"W	1064.45	191.405	1.74	-0.36	-1.71	
7379.00	89.510	158.650	6261.13	1004.62	-1132.04	-179.16	1642953.51	14313179.80	39°24'55.412"N	80°59'27.664"W	1146.13	188.993	4.00	0.17	-4.00	
7472.00	89.940	155.180	6261.57	1097.45	-1217.58	-142.70	1642989.95	14313094.30	39°24'54.566"N	80°59'27.200"W	1225.91	186.685	3.76	0.46	-3.73	
7567.00	89.690	152.630	6261.88	1191.86	-1302.89	-100.92	1643031.72	14313009.02	39°24'53.723"N	80°59'26.668"W	1306.79	184.429	2.70	-0.26	-2.68	
7661.00	89.480	153.550	6262.56	1285.13	-1386.71	-58.38	1643074.24	14312925.24	39°24'52.895"N	80°59'26.126"W	1387.93	182.411	1.00	-0.22	0.98	
7754.00	88.920	156.760	6263.86	1377.75	-1471.08	-19.31	1643113.29	14312840.90	39°24'52.061"N	80°59'25.628"W	1471.21	180.752	3.50	-0.60	3.45	
7849.00	87.820	161.380	6266.57	1472.66	-1559.75	14.60	1643147.19	14312752.27	39°24'51.184"N	80°59'25.196"W	1559.82	179.464	5.00	-1.16	4.86	
7944.00	89.350	164.530	6268.91	1567.51	-1650.53	42.43	1643175.02	14312661.52	39°24'50.287"N	80°59'24.842"W	1651.08	178.527	3.69	1.61	3.32	
8039.00	89.910	164.670	6269.53	1662.23	-1742.12	67.66	1643200.23	14312569.97	39°24'49.382"N	80°59'24.520"W	1743.43	177.776	0.61	0.59	0.15	
8134.00	90.000	160.750	6269.60	1757.12	-1832.81	95.89	1643228.45	14312479.31	39°24'48.485"N	80°59'24.161"W	1835.32	177.005	4.13	0.09	-4.13	
8229.00	89.970	160.270	6269.62	1852.12	-1922.37	127.59	1643260.13	14312389.79	39°24'47.600"N	80°59'23.757"W	1926.60	176.203	0.51	-0.03	-0.51	
8325.00	89.350	161.040	6270.19	1948.12	-2012.94	159.39	1643291.92	14312299.25	39°24'46.705"N	80°59'23.352"W	2019.24	175.473	1.03	-0.65	0.80	
8420.00	89.850	160.530	6270.86	2043.11	-2102.65	190.65	1643323.17	14312209.56	39°24'45.818"N	80°59'22.954"W	2111.27	174.819	0.75	0.53	-0.54	
8515.00	90.060	161.210	6270.93	2138.10	-2192.40	221.78	1643354.29	14312119.87	39°24'44.931"N	80°59'22.557"W	2203.59	174.224	0.75	0.22	0.74	
8610.00	89.910	162.870	6270.96	2233.05	-2282.77	251.08	1643383.57	14312029.53	39°24'44.038"N	80°59'22.184"W	2296.54	173.723	1.75	-0.16	1.75	
8705.00	89.970	163.160	6271.06	2327.94	-2373.63	278.83	1643411.31	14311938.72	39°24'43.140"N	80°59'21.831"W	2389.95	173.300	0.31	0.06	0.31	
8800.00	89.750	162.270	6271.29	2422.85	-2464.33	307.05	1643439.53	14311848.04	39°24'42.243"N	80°59'21.471"W	2483.39	172.898	0.97	-0.23	-0.94	
8895.00	89.850	161.180	6271.62	2517.81	-2554.54	336.84	1643469.31	14311757.87	39°24'41.352"N	80°59'21.092"W	2576.65	172.488	1.15	0.11	-1.15	



# Actual Wellpath Report

Wick Unit 2H AWP Proj: 16976'

Page 6 of 11



## REFERENCE WELLPATH IDENTIFICATION

Operator	Slot	Slot #05
ANTERO RESOURCES CORPORATION	Wick Unit 2H	Wick Unit 2H
Tyler County, WV	Wellbore	Wick Unit 2H AWB
Tyler		
Correll Pad		

## WELLPATH DATA (206 stations)

MD (ft)	Inclination (°)	Azimuth (°)	TVD (ft)	Vert Sect (ft)	North (ft)	East (ft)	Grid East (US ft)	Grid North (US ft)	Latitude	Longitude	Closure Dist (ft)	Closure Dir (°)	DLS (F/100ft)	Build Rate (F/100ft)	Turn Rate (F/100ft)	Comments
8990.00	90.060	159.703	6271.69	2612.81	-2644.06	368.65	1643601.10	14311668.39	39°24'40.46"N	80°59'20.687"W	2669.63	172.083	1.57	0.22	-1.56	
9086.00	89.720	158.630	6271.88	2706.79	-2733.78	402.79	1643635.23	14311578.71	39°24'39.580"N	80°59'20.252"W	2763.29	171.618	1.17	-0.35	-1.11	
9180.00	90.000	159.010	6272.11	2802.76	-2821.43	436.75	1643669.18	14311491.09	39°24'38.714"N	80°59'19.819"W	2855.03	171.201	0.50	0.30	0.40	
9275.00	90.030	159.720	6272.08	2897.75	-2910.33	470.23	1643680.64	14311402.23	39°24'37.835"N	80°59'19.393"W	2948.07	170.822	0.75	0.03	0.75	
9370.00	89.970	160.260	6272.08	2992.75	-2999.60	502.74	1643635.14	14311313.00	39°24'36.953"N	80°59'18.979"W	3041.43	170.486	0.57	-0.06	0.57	
9465.00	89.910	160.050	6272.18	3087.75	-3088.95	534.99	1643667.37	14311223.67	39°24'36.070"N	80°59'18.568"W	3134.94	170.174	0.23	-0.06	-0.22	
9560.00	89.720	160.520	6272.49	3182.75	-3178.38	567.04	1643699.41	14311134.28	39°24'35.186"N	80°59'18.160"W	3228.57	169.885	0.53	-0.20	0.49	
9655.00	89.750	160.580	6272.93	3277.74	-3267.96	598.67	1643731.03	14311044.74	39°24'34.300"N	80°59'17.757"W	3322.35	169.619	0.07	0.03	0.06	
9751.00	89.780	160.150	6273.32	3373.74	-3358.38	630.93	1643763.27	14310954.36	39°24'33.400"N	80°59'17.346"W	3417.13	169.360	0.45	0.03	-0.45	
9846.00	90.820	159.030	6272.99	3468.73	-3447.41	664.06	1643796.39	14310865.36	39°24'32.527"N	80°59'16.924"W	3510.79	169.097	1.47	0.88	-1.18	
9940.00	89.510	156.270	6272.89	3562.63	-3534.34	699.80	1643832.12	14310778.47	39°24'31.667"N	80°59'16.469"W	3602.96	168.800	3.16	-1.18	-2.94	
10036.00	89.660	155.190	6273.58	3658.33	-3621.85	739.26	1643871.56	14310690.99	39°24'30.802"N	80°59'15.967"W	3696.53	168.464	1.14	0.16	-1.13	
10131.00	89.750	154.720	6274.07	3752.93	-3707.92	779.47	1643911.76	14310604.96	39°24'29.962"N	80°59'15.455"W	3788.96	168.128	0.50	0.09	-0.49	
10226.00	88.830	157.060	6275.25	3847.64	-3794.62	818.27	1643950.54	14310518.29	39°24'29.095"N	80°59'14.960"W	3881.84	167.831	2.65	-0.97	2.46	
10321.00	89.450	160.560	6276.67	3942.59	-3883.17	852.60	1643984.86	14310429.78	39°24'28.220"N	80°59'14.523"W	3975.67	167.616	3.74	0.65	3.68	
10416.00	90.280	166.240	6276.90	4037.40	-3974.17	879.73	1644011.98	14310338.81	39°24'27.320"N	80°59'14.178"W	4070.38	167.518	6.04	0.87	5.98	
10512.00	90.430	167.820	6276.30	4132.72	-4067.72	901.28	1644033.51	14310245.30	39°24'26.396"N	80°59'13.903"W	4166.37	167.507	1.65	0.16	1.65	
10607.00	90.310	166.300	6275.69	4227.04	-4160.30	922.55	1644054.78	14310152.76	39°24'25.480"N	80°59'13.633"W	4261.36	167.487	1.60	-0.13	-1.60	
10702.00	90.280	164.410	6275.20	4321.65	-4252.21	946.57	1644078.78	14310060.89	39°24'24.572"N	80°59'13.327"W	4356.29	167.450	1.99	-0.03	-1.99	
10796.00	89.850	163.410	6275.09	4415.46	-4342.53	972.62	1644104.83	14309970.61	39°24'23.679"N	80°59'12.995"W	4450.11	167.376	1.16	-0.46	-1.06	
10891.00	89.880	163.410	6275.32	4510.31	-4433.57	999.74	1644131.94	14309879.60	39°24'22.779"N	80°59'12.650"W	4544.89	167.293	0.03	0.03	0.00	
10986.00	89.910	164.700	6275.49	4605.09	-4524.91	1025.84	1644158.03	14309788.29	39°24'21.877"N	80°59'12.317"W	4639.74	167.226	1.36	0.03	1.36	
11081.00	89.880	165.650	6275.67	4699.74	-4616.75	1050.15	1644182.32	14309696.49	39°24'20.969"N	80°59'12.008"W	4734.68	167.185	1.00	-0.03	1.00	
11176.00	89.880	164.270	6275.86	4794.41	-4708.49	1074.80	1644206.96	14309604.79	39°24'20.062"N	80°59'11.894"W	4829.61	167.142	1.45	0.00	-1.45	
11270.00	89.970	161.910	6275.99	4888.28	-4798.42	1102.14	1644234.29	14309514.89	39°24'19.173"N	80°59'11.346"W	4923.37	167.084	2.51	0.10	-2.51	
11365.00	89.910	160.110	6276.09	4983.27	-4888.25	1133.05	1644265.19	14309425.10	39°24'18.285"N	80°59'10.952"W	5017.85	166.960	1.90	-0.06	-1.89	
11459.00	89.750	161.570	6276.37	5077.26	-4977.04	1163.90	1644296.03	14309336.35	39°24'17.408"N	80°59'10.559"W	5111.32	166.838	1.56	-0.17	1.55	
11554.00	89.820	162.200	6276.72	5172.22	-5067.33	1193.44	1644325.56	14309246.09	39°24'16.515"N	80°59'10.183"W	5205.97	166.747	0.67	0.07	0.66	
11649.00	89.880	162.260	6276.97	5267.16	-5157.80	1222.43	1644354.54	14309155.66	39°24'15.621"N	80°59'09.814"W	5300.68	166.667	0.09	0.06	0.06	
11744.00	89.850	161.360	6277.19	5362.13	-5248.05	1252.09	1644384.18	14309065.46	39°24'14.729"N	80°59'09.436"W	5395.34	166.581	0.95	-0.03	-0.95	



# Actual Wellpath Report

Wick Unit 2H AWP Proj: 16976'

Page 7 of 11



## REFERENCE WELLPATH IDENTIFICATION

Operator	ANTERO RESOURCES CORPORATION	Slot	Slot #05
Area	Tyler County, WY	Well	Wick Unit 2H
Field	Tyler	Wellbore	Wick Unit 2H AWB
Facility	Gorrell Pad		

## WELLPATH DATA (206 stations)

MD (ft)	Inclination (°)	Azimuth (°)	TVD (ft)	Vert Sect (ft)	North (ft)	East (ft)	Grid East (ft)	Grid North (ft)	Latitude	Longitude	Closure Dist (ft)	Closure Dir (°)	DLS (1/100ft)	Build Rate (1/100ft)	Turn Rate (1/100ft)	Comments
11838.00	89.880	158.980	6277.42	5456.12	-5336.47	1283.97	1644416.05	14308977.06	39°24'13.855"N	80°59'09.030"W	5488.76	166.472	2.53	0.03	-2.53	
11933.00	89.780	155.820	6277.70	5550.99	-5424.16	1320.48	1644452.54	14308889.41	39°24'12.989"N	80°59'08.566"W	5582.58	166.318	3.33	-0.11	-3.33	
12028.00	89.630	154.400	6278.19	5645.61	-5510.33	1360.46	1644492.51	14308803.27	39°24'12.137"N	80°59'08.056"W	5675.79	166.131	1.50	-0.16	-1.49	
12123.00	89.720	154.470	6278.73	5740.12	-5596.03	1401.45	1644533.49	14308717.60	39°24'11.290"N	80°59'07.534"W	5768.85	165.940	0.12	0.09	0.07	
12219.00	89.480	155.040	6279.40	5835.69	-5682.86	1442.39	1644574.41	14308630.81	39°24'10.431"N	80°59'07.013"W	5863.05	165.758	0.64	-0.25	0.59	
12314.00	89.510	154.800	6280.23	5930.28	-5768.90	1482.66	1644614.66	14308544.81	39°24'09.581"N	80°59'06.500"W	5956.38	165.586	0.25	0.03	-0.25	
12409.00	89.660	157.270	6280.92	6025.01	-5855.70	1521.24	1644653.23	14308458.04	39°24'08.723"N	80°59'06.009"W	6050.08	165.437	2.60	0.16	2.60	
12505.00	89.510	158.550	6281.62	6120.93	-5944.65	1557.34	1644689.32	14308369.32	39°24'07.844"N	80°59'05.549"W	6145.26	165.320	1.34	-0.16	1.33	
12599.00	89.510	159.660	6282.42	6214.91	-6032.46	1590.88	1644722.84	14308281.35	39°24'06.976"N	80°59'05.122"W	6238.71	165.226	1.17	0.00	1.17	
12694.00	89.540	161.160	6283.21	6309.90	-6121.95	1622.73	1644754.68	14308191.89	39°24'06.091"N	80°59'04.717"W	6333.37	165.154	1.59	0.03	1.59	
12789.00	89.480	161.110	6284.02	6404.88	-6211.85	1653.45	1644785.38	14308102.04	39°24'05.203"N	80°59'04.325"W	6428.14	165.095	0.08	-0.06	-0.05	
12884.00	89.720	159.680	6284.68	6499.88	-6301.34	1685.32	1644817.25	14308012.58	39°24'04.318"N	80°59'03.920"W	6522.82	165.026	1.53	0.25	-1.51	
12979.00	89.690	159.760	6285.17	6594.87	-6390.44	1718.25	1644850.16	14307923.51	39°24'03.438"N	80°59'03.500"W	6617.41	164.950	0.09	-0.03	0.08	
13075.00	89.690	161.240	6285.69	6690.87	-6480.93	1750.30	1644882.19	14307833.06	39°24'02.543"N	80°59'03.092"W	6713.13	164.887	1.54	0.00	1.54	
13170.00	89.690	162.110	6286.21	6785.84	-6571.11	1780.16	1644912.05	14307742.91	39°24'01.652"N	80°59'02.712"W	6807.98	164.842	0.92	0.00	0.92	
13265.00	89.750	159.910	6286.67	6880.82	-6660.94	1811.07	1644942.95	14307653.13	39°24'00.764"N	80°59'02.319"W	6902.76	164.789	2.32	0.06	-2.32	
13360.00	89.850	157.550	6287.00	6975.78	-6749.46	1845.53	1644977.39	14307564.64	39°23'59.889"N	80°59'01.880"W	6997.23	164.707	2.49	0.11	-2.48	
13455.00	89.880	157.080	6287.23	7070.66	-6837.11	1882.17	1645014.01	14307477.03	39°23'59.023"N	80°59'01.413"W	7091.45	164.608	0.50	0.03	-0.49	
13551.00	89.780	156.520	6287.51	7166.49	-6925.35	1919.99	1645051.82	14307388.82	39°23'58.150"N	80°59'00.932"W	7186.57	164.504	0.59	-0.10	-0.58	
13646.00	89.750	158.500	6287.90	7261.37	-7013.12	1956.33	1645088.14	14307301.09	39°23'57.283"N	80°59'00.469"W	7280.87	164.413	2.08	-0.03	2.08	
13741.00	89.600	159.740	6288.44	7356.35	-7101.87	1990.19	1645121.98	14307212.37	39°23'56.406"N	80°59'00.038"W	7375.46	164.345	1.31	-0.16	1.31	
13836.00	89.540	160.500	6289.15	7451.35	-7191.21	2022.49	1645154.28	14307123.07	39°23'55.523"N	80°58'59.627"W	7470.20	164.292	0.80	-0.06	0.80	
13931.00	89.630	161.790	6289.84	7546.33	-7281.11	2053.79	1645184.96	14307033.21	39°23'54.634"N	80°58'59.236"W	7565.06	164.252	1.36	0.09	1.36	
14026.00	89.510	161.560	6290.55	7641.30	-7371.29	2083.06	1645214.82	14306943.06	39°23'53.743"N	80°58'58.856"W	7659.96	164.220	0.27	-0.13	-0.24	
14121.00	89.510	159.770	6291.37	7736.29	-7460.92	2114.51	1645246.26	14306853.46	39°23'52.857"N	80°58'58.455"W	7754.77	164.177	1.88	0.00	-1.88	
14216.00	89.570	159.340	6292.13	7831.28	-7549.94	2147.69	1645279.43	14306764.49	39°23'51.977"N	80°58'58.033"W	7849.46	164.121	0.46	0.06	-0.45	
14310.00	89.450	157.710	6292.93	7925.23	-7637.40	2182.10	1645313.82	14306677.05	39°23'51.112"N	80°58'57.595"W	7943.02	164.065	1.74	-0.13	-1.73	
14404.00	89.140	157.060	6294.09	8019.11	-7724.17	2218.25	1645349.96	14306590.33	39°23'50.255"N	80°58'57.134"W	8036.38	163.977	0.78	-0.33	-0.70	
14498.00	89.480	162.570	6295.22	8113.06	-7812.35	2250.68	1645382.37	14306502.12	39°23'49.383"N	80°58'56.721"W	8130.09	163.929	5.88	0.36	5.87	
14593.00	89.600	164.940	6295.99	8207.87	-7903.55	2277.25	1645408.94	14306411.08	39°23'48.482"N	80°58'56.353"W	8225.08	163.927	2.50	0.13	2.49	





# Actual Wellpath Report

Wick Unit 2H AWP Proj: 16976'  
Page 8 of 11



## REFERENCE WELLPATH IDENTIFICATION

Operator	ANTERO RESOURCES CORPORATION	Slot	Slot #05
Area	Tyler County, WV	Well	Wick Unit 2H
Field	Tyler	Wellbore	Wick Unit 2H AWB
Facility	Gorrell Pad		

## WELLPATH DATA (206 stations)

MD (ft)	Inclination (°)	Azimuth (°)	TVD (ft)	Vert Sect (ft)	North (ft)	East (ft)	Grid East (US ft)	Grid North (US ft)	Latitude	Longitude	Closure Dist (ft)	Closure Dir (°)	DLS (°/100ft)	Build Rate (°/100ft)	Turn Rate (°/100ft)	Comments
14687.00	89.630	164.870	6296.62	8301.56	-7994.30	2301.73	1645433.41	14306320.30	39°23'47.585"N	80°58'56.072"W	8319.06	163.938	0.08	0.03	-0.07	
14782.00	89.660	164.220	6297.21	8396.28	-8085.86	2327.05	1645488.71	14306228.77	39°23'46.680"N	80°58'55.749"W	8414.06	163.945	0.68	0.03	-0.63	
14876.00	89.570	163.150	6297.84	8490.11	-8176.07	2353.45	1645485.11	14306138.60	39°23'45.788"N	80°58'55.413"W	8508.05	163.942	1.14	-0.10	-1.14	
14970.00	89.600	162.310	6298.52	8584.02	-8265.83	2381.36	1645513.00	14306048.88	39°23'44.901"N	80°58'55.058"W	8602.03	163.928	0.89	0.03	-0.83	
15064.00	89.570	161.150	6299.20	8677.98	-8355.09	2410.83	1645542.46	14305959.65	39°23'44.019"N	80°58'54.683"W	8695.95	163.905	1.23	-0.03	-1.23	
15159.00	89.450	161.140	6300.01	8772.96	-8444.99	2441.53	1645573.14	14305869.79	39°23'43.130"N	80°58'54.292"W	8790.84	163.875	0.13	-0.13	-0.01	
15253.00	89.600	161.040	6300.79	8866.95	-8533.91	2471.99	1645603.59	14305780.90	39°23'42.251"N	80°58'53.904"W	8884.73	163.845	0.19	0.16	-0.11	
15348.00	89.630	160.390	6301.43	8961.94	-8623.58	2503.36	1645634.96	14305691.27	39°23'41.365"N	80°58'53.505"W	8979.59	163.812	0.68	0.03	-0.62	
15442.00	89.480	159.090	6302.16	9055.93	-8711.76	2535.91	1645667.49	14305603.13	39°23'40.493"N	80°58'53.091"W	9073.35	163.770	1.39	-0.16	-1.38	
15536.00	89.570	156.970	6302.94	9149.86	-8798.93	2571.08	1645702.64	14305516.00	39°23'39.632"N	80°58'52.643"W	9166.87	163.711	2.26	0.10	-2.26	
15630.00	89.540	156.900	6303.67	9243.70	-8885.41	2607.90	1645739.45	14305429.55	39°23'38.777"N	80°58'52.174"W	9260.22	163.643	0.08	-0.03	-0.07	
15724.00	89.450	158.030	6304.50	9337.59	-8972.23	2643.93	1645775.46	14305342.77	39°23'37.919"N	80°58'51.715"W	9353.67	163.581	1.21	-0.10	1.20	
15819.00	89.660	158.080	6305.24	9432.51	-9060.34	2679.43	1645810.95	14305254.69	39°23'37.048"N	80°58'51.263"W	9448.23	163.525	0.23	0.22	0.05	
15913.00	89.630	157.290	6305.82	9526.42	-9147.30	2715.12	1645846.63	14305167.76	39°23'36.188"N	80°58'50.809"W	9541.75	163.468	0.84	-0.03	-0.84	
16008.00	89.540	159.340	6306.51	9621.36	-9235.57	2750.22	1645881.71	14305079.53	39°23'35.316"N	80°58'50.362"W	9636.36	163.417	2.16	-0.09	2.16	
16102.00	89.480	162.500	6307.31	9715.34	-9324.39	2780.94	1645912.42	14304990.74	39°23'34.438"N	80°58'49.971"W	9730.26	163.393	3.36	-0.06	3.36	
16196.00	89.420	162.820	6308.21	9809.25	-9414.11	2808.96	1645940.42	14304901.06	39°23'33.551"N	80°58'49.615"W	9824.24	163.386	0.35	-0.06	0.34	
16290.00	89.080	160.700	6309.44	9903.20	-9503.38	2838.37	1645969.83	14304811.83	39°23'32.669"N	80°58'49.240"W	9918.19	163.371	2.28	-0.36	-2.25	
16384.00	89.230	159.900	6310.83	9997.19	-9591.87	2870.06	1646001.50	14304723.38	39°23'31.794"N	80°58'48.837"W	10012.05	163.342	0.87	0.16	-0.85	
16479.00	89.570	160.810	6311.82	10092.18	-9681.33	2901.99	1646033.42	14304633.95	39°23'30.910"N	80°58'48.430"W	10106.91	163.314	1.02	0.36	0.96	
16574.00	89.420	160.860	6312.66	10187.17	-9771.06	2933.18	1646064.60	14304544.25	39°23'30.023"N	80°58'48.033"W	10201.82	163.291	0.17	-0.16	0.05	
16669.00	89.570	161.580	6313.50	10282.16	-9861.00	2963.76	1646095.17	14304454.35	39°23'29.134"N	80°58'47.644"W	10296.76	163.272	0.77	0.16	0.76	
16763.00	89.510	162.840	6314.25	10376.09	-9950.50	2992.48	1646123.87	14304364.89	39°23'28.249"N	80°58'47.279"W	10390.74	163.262	1.34	-0.06	1.34	
16858.00	89.600	163.760	6314.99	10470.95	-10041.49	3019.78	1646151.16	14304273.93	39°23'27.350"N	80°58'46.931"W	10485.73	163.262	0.97	0.09	0.97	
16951.00	89.540	165.800	6315.69	10563.65	-10131.22	3044.19	1646175.57	14304184.24	39°23'26.463"N	80°58'46.620"W	10578.69	163.276	2.19	-0.06	2.19	
16976.00	89.540	165.800	6315.89	10588.53	-10155.46	3050.32	1646181.70	14304160.01	39°23'26.223"N	80°58'46.542"W	10603.67	163.282	0.00	0.00	0.00	Projected MD at TD: 16976'



# Actual Wellpath Report

Wick Unit 2H AWP Proj: 16976'  
Page 9 of 11



## REFERENCE WELLPATH IDENTIFICATION

Operator	Slot	Slot #05
ANTERO RESOURCES CORPORATION	Well	Wick Unit 2H
Tyler County, WV	Wellbore	Wick Unit 2H AWB
Tyler		
Gorrell Pad		

## HOLE & CASING SECTIONS - Ref Wellbore: Wick Unit 2H AWB Ref Wellpath: Wick Unit 2H AWP Proj: 16976'

String/Diameter	Start MD (ft)	End MD (ft)	Interval (ft)	Start TVD (ft)	End TVD (ft)	Start N/S (ft)	Start E/W (ft)	End N/S (ft)	End E/W (ft)
20in Conductor	30.00	110.00	80.00	30.00	110.00	0.00	0.00	-0.01	-0.14
17.5in Open Hole	110.00	650.00	540.00	110.00	649.99	-0.01	-0.14	-1.90	-3.17
13.375in Casing Surface	30.00	630.90	600.90	30.00	630.89	0.00	0.00	-1.82	-3.05
12.25in Open Hole	650.00	2594.00	1944.00	649.99	2592.22	-1.90	-3.17	13.78	-45.51
9.625in Casing Intermediate	30.00	2574.00	2544.00	30.00	2572.23	0.00	0.00	13.55	-45.09
8.75in Open Hole	2594.00	5165.00	2571.00	2592.22	5112.10	13.78	-45.51	141.91	-391.29
8.5in Open Hole	5165.00	16976.00	11811.00	5112.10	6315.89	141.91	-391.29	-10155.46	3050.32
5.5in Casing Production	30.00	16976.00	16946.00	30.00	6315.89	0.00	0.00	-10155.46	3050.32

## TARGETS

Name	TVD (ft)	North (ft)	East (ft)	Grid East (US ft)	Grid North (US ft)	Latitude	Longitude	Shape
Wick Unit 2H - POE - Rev-3	6223.00	-321.38	-472.13	1642660.66	14313990.14	39°25'03.424"N	80°59'31.396"W	point
Wick Unit 2H - BHL - Rev-4	6262.00	-10279.95	3108.50	1646239.85	14304035.57	39°23'24.993"N	80°58'45.802"W	point
Wick Unit 2H - LP - Rev-3	6262.00	-540.75	-393.26	1642739.50	14313770.86	39°25'01.256"N	80°59'30.391"W	point



# Actual Wellpath Report

Wick Unit 2H AWP Proj: 16976'  
Page 10 of 11



## REFERENCE WELLPATH IDENTIFICATION

Operator	ANTERO RESOURCES CORPORATION	Slot	Slot #05
Area	Tyler County, WV	Well	Wick Unit 2H
Field	Tyler	Wellbore	Wick Unit 2H AWB
Facility	Gorrell Pad		

## WELLPATH COMPOSITION - Ref Wellbore: Wick Unit 2H AWB Ref Wellpath: Wick Unit 2H AWP Proj: 16976'

Start MD (ft)	End MD (ft)	Positional Uncertainty Model	Log Name/Comment	Wellbore
30.00	610.00	Gyrodata standard - Drop gyro or Multi-shot	01 Gyrodata MS Gyro <17-1/2">(100'-610')	Wick Unit 2H AWB
610.00	2625.00	BHI NavITrak (Axial)	02 AFS EM <12-1/4"> (610')/(690'-2625')	Wick Unit 2H AWB
2625.00	5096.00	BHI NavITrak (Axial)	03 AFS EM <8-3/4"> (2625')/(2645'-5096')	Wick Unit 2H AWB
5096.00	16951.00	BHI AutoTrak Curve (Short)	04 BH AT Curve <8-1/2"> (5096')/(5140'-16951')	Wick Unit 2H AWB
16951.00	16976.00	Blind Drilling (std)	Projection to bit	Wick Unit 2H AWB



# Actual Wellpath Report

Wick Unit 2H AWP Proj: 16976'  
Page 11 of 11



REFERENCE WELLPATH IDENTIFICATION			
Operator	ANTERO RESOURCES CORPORATION	Slot	Slot #05
Area	Tyler County, WV	Well	Wick Unit 2H
Field	Tyler	Wellbore	Wick Unit 2H AWB
Facility	Gorrell Pad		

## COMMENTS

Wellpath general comments  
 API: 47-095-02594-0000  
 BHI Job #: 109803280A  
 Rig: H&P 519  
 Duration: 05/03/2019-06/24/2019  
 Gyrodata MS Gyro <17-1/2">(100'-610')  
 APS EM <12-1/4"> (610')(690'-2525')  
 APS EM <8-3/4"> (2525')(2645'-5096')  
 BH AT Curve <8-1/2">(5096')(5140'-16951')  
 Middlesex: 6269' MD  
 Burkett: 6433' MD  
 Tully: 6480' MD  
 Marcellus POE: 6491' MD  
 Projected MD at TD: 16976'