

ANTERO RESOURCES CORPORATION

Location: Tyler County, WV
 Field: Tyler
 Facility: Sine Pad

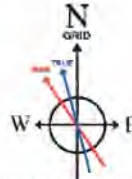
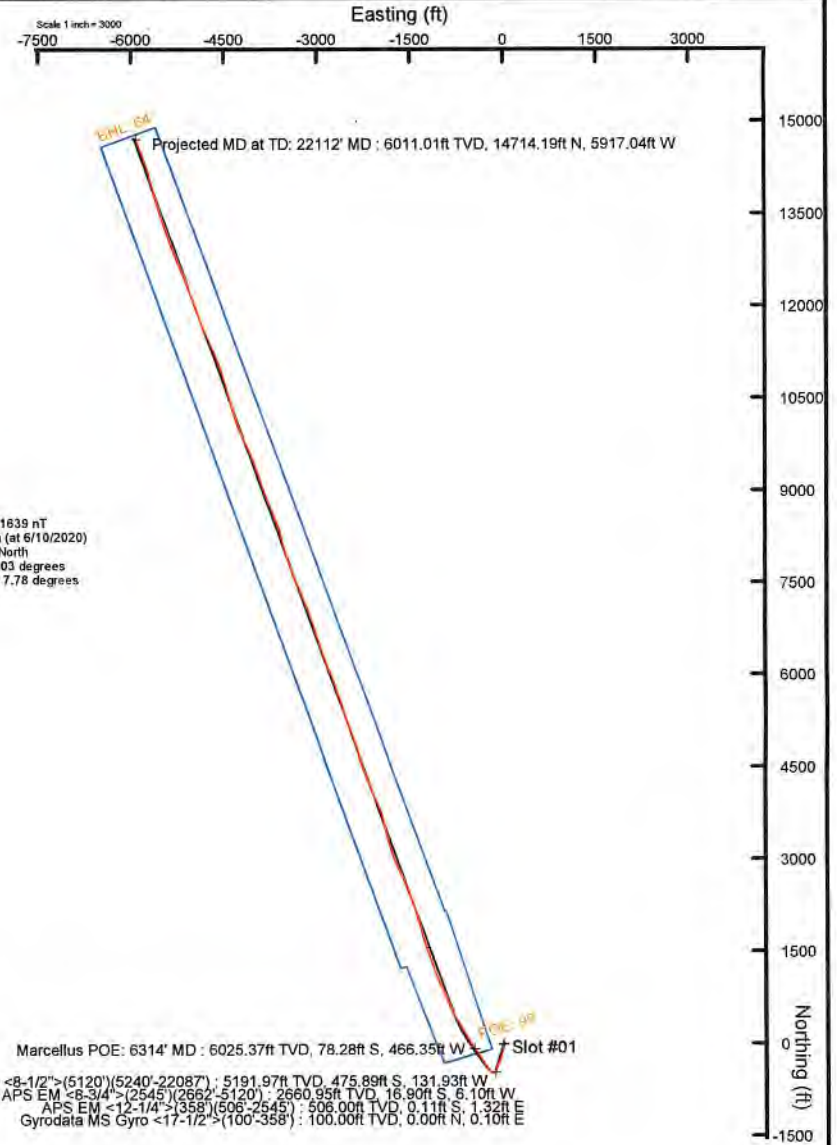
Slot: Slot #01
 Well: Alpine West Unit 1H
 Wellbore: Alpine West Unit 1H PWB

Shot reference wellpath is Alpine West Unit 1H PWB Rev-B.0	Grid System: NAD2011 / UTM Zone 17 North, US feet
True vertical depths are referenced to H&P 519 (RKB)	North Reference: Grid north
Reference wellpath measured depths are referenced to H&P 519 (RKB)	Scale: True distance
H&P 519 (RKB) to Mean Sea Level: 829 feet	Coordinates are in feet referenced to Slot
Mean Sea Level to Ground level (At Slot: Slot #01)	Depth, zero feet
Other wellpath MDs are referenced to each path's default MD datum	Created by: delbert on 20200529 Database: WA_MPL_EasterUS_Defn

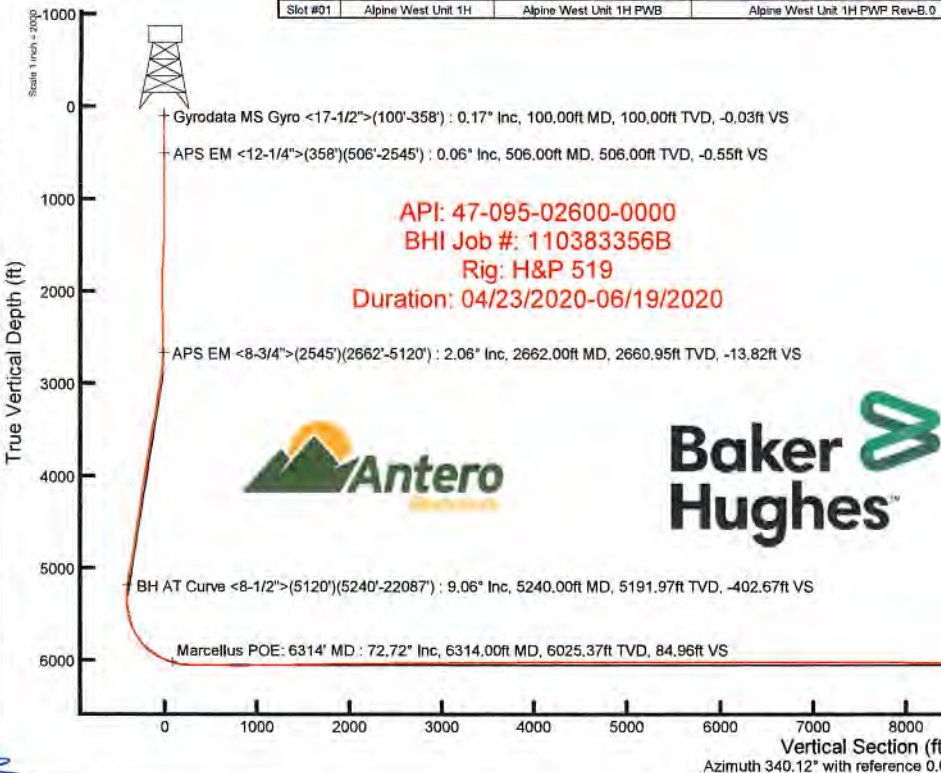
Location Information						
Facility Name		Grid East (US ft)	Grid North (US ft)	Latitude	Longitude	
Sine Pad		1652653.868	14313061.080	39°24'54.2100"N	80°57'24.0200"W	
Slot	Local N (ft)	Local E (ft)	Grid East (US ft)	Grid North (US ft)	Latitude	Longitude
Slot #01	0.91	-216.62	1652437.336	14313061.989	39°24'54.2200"N	80°57'26.7800"W
H&P 519 (RKB) to Ground level (At Slot: Slot #01)			30ft			
Mean Sea Level to Ground level (At Slot: Slot #01)			-799ft			
H&P 519 (RKB) to Mean Sea Level			829ft			

Well Profile Data								
Design Comment	MD (ft)	Inc (")	Az (°)	TVD (ft)	Local N (ft)	Local E (ft)	DLS (°/100ft)	VS (ft)
Tie On	2545.00	1.630	228.020	2544.01	-14.39	-3.29	1.06	-12.42
Proj. To Bottom	2617.00	1.630	228.020	2615.98	-15.74	-4.83	0.00	-13.16
Drill Out Casp / KOP 1	2717.00	1.630	228.020	2716.94	-17.61	-6.97	0.00	-14.19
Hold	3045.46	11.178	195.746	3042.02	-51.40	-19.17	3.00	-41.82
Curve KOP	5286.07	11.178	195.746	5249.94	-471.34	-137.57	0.00	-306.47
PCE	6287.29	71.757	327.000	6018.00	-109.33	-475.79	8.00	58.98
Landing PL	6515.33	90.000	327.000	6054.00	78.71	-597.91	8.00	277.34
On Azimuth	6962.50	90.000	340.115	6054.00	469.29	-792.15	3.00	710.70
BH-L	22109.55	90.000	340.115	6054.00	14721.71	-5947.19	0.00	15866.75

Well Data			
Slot	Well	Wellbore	Wellpath
Slot #01	Alpine West Unit 1H	Alpine West Unit 1H AWB	Alpine West Unit 1H AWP Proj. 22112'
Slot #01	Alpine West Unit 1H	Alpine West Unit 1H PWB	Alpine West Unit 1H PWB Rev-B.0



User specified (HDGM) Dip: 68.38° Field: 51639 nT
 Magnetic North is 7.75 degrees West of True North (at 6/10/2020)
 Grid North is 0.03 degrees East of True North
 To correct azimuth from True to Grid subtract 0.03 degrees
 To correct azimuth from Magnetic to Grid subtract 7.78 degrees



Marcellus POE: 6314' MD : 6025.37ft TVD, 78.28ft S, 466.35ft W

Slot #01

BH AT Curve <8-1/2">(5120')(5240'-22087') : 9.06° Inc, 5240.00ft MD, 5191.97ft TVD, -402.67ft VS

APS EM <8-3/4">(2545')(2662'-5120') : 2.06° Inc, 2662.00ft MD, 2660.95ft TVD, -13.82ft VS

APS EM <12-1/4">(358')(506'-2545') : 0.06° Inc, 506.00ft MD, 506.00ft TVD, -0.55ft VS

Gyrodata MS Gyro <17-1/2">(100'-358') : 0.17° Inc, 100.00ft MD, 100.00ft TVD, -0.03ft VS

Projected MD at TD: 22112' MD : 90.52° Inc, 22112.00ft MD, 6011.01ft TVD, 15849.42ft VS

Scale 1 inch = 2000

Vertical Section (ft)
 Azimuth 340.12° with reference 0.00 N, 0.00 E



Actual Wellpath Report

Alpine West Unit 1H AWP Proj: 22112'

Page 1 of 12



REFERENCE WELLPATH IDENTIFICATION

Operator	ANTERO RESOURCES CORPORATION	Well	Alpine West Unit 1H
Field	Tyler	API	47-095-02600-0000
Facility	Sine Pad	Wellbore	Alpine West Unit 1H AWB
Slot	Slot #01		

REPORT SETUP INFORMATION

Projection System	NAD27 / UTM Zone 17 North, US feet	Software System	WellArchitect® 6.0
North Reference	Grid	User	Delaset
Scale	0.999600	Report Generated	6/29/2020 at 2:15:33 PM
Convergence at slot	0.03° East	Database	WA_MPL_EasternUS_Defn

WELLPATH LOCATION

	Local coordinates		Grid coordinates		Geographic coordinates	
	North[ft]	East[ft]	Easting[US ft]	Northing[US ft]	Latitude	Longitude
Slot Location	0.91	-216.62	1652437.34	14313061.99	39°24'54.2200"N	80°57'26.7800"W
Facility Reference Pt			1652653.87	14313061.08	39°24'54.2100"N	80°57'24.0200"W
Field Reference Pt			0.00	0.00	0°00'0.0000"	85°29'19.3013"W

WELLPATH DATUM

Calculation method	Minimum curvature	H&P 519 (RKB) to Facility Vertical Datum	30.00ft
Horizontal Reference Pt	Slot	H&P 519 (RKB) to Mean Sea Level	829.00ft
Vertical Reference Pt	H&P 519 (RKB)	H&P 519 (RKB) to Ground Level at Slot (Slot #01)	30.00ft
MD Reference Pt	H&P 519 (RKB)	Section Origin	N 0.00, E 0.00 ft
Field Vertical Reference	Mean Sea Level	Section Azimuth	340.12°

RECEIVED
 Office of Oil and Gas
 FEB 17 2023
 WV Department of
 Environmental Protection



Actual Wellpath Report

Alpine West Unit 1H AWP Proj: 22112'
Page 2 of 12



REFERENCE WELLPATH IDENTIFICATION				
Operator	ANTERO RESOURCES CORPORATION		Well	Alpine West Unit 1H
Field	Tyler		API	47-095-02600-0000
Facility	Sine Pad		Wellbore	Alpine West Unit 1H AWB
Slot	Slot #01			

WELLPATH DATA (242 stations) † = interpolated, ‡ = extrapolated station																
MD (ft)	Inclination (°)	Azimuth (°)	TVD (ft)	Vert Sect (ft)	North (ft)	East (ft)	Grid East (US ft)	Grid North (US ft)	Latitude	Longitude	Closure Dist (ft)	Closure Dir (°)	DLS (ft/100ft)	Build Rate (ft/100ft)	Turn Rate (ft/100ft)	Comments
0.00	0.00	89.080	0.00	0.00	0.00	0.00	1652437.34	14313061.99	39°24'54.2200"N	80°57'26.7800"W	0.00	0.000	0.00	0.00	0.00	
30.00	0.000	89.080	30.00	0.00	0.00	0.00	1652437.34	14313061.99	39°24'54.2200"N	80°57'26.7800"W	0.00	0.000	0.00	0.00	0.00	
100.00	0.170	89.080	100.00	-0.03	0.00	0.10	1652437.44	14313061.99	39°24'54.2200"N	80°57'26.7787"W	0.10	89.080	0.24	0.24	0.00	Gyrodata MS Gyro <17-1/2">(100'-358')
200.00	0.320	94.280	200.00	-0.20	-0.02	0.53	1652437.87	14313061.97	39°24'54.2198"N	80°57'26.7732"W	0.53	91.812	0.15	0.15	5.20	
300.00	0.190	128.030	300.00	-0.45	-0.14	0.94	1652438.28	14313061.85	39°24'54.2186"N	80°57'26.7680"W	0.95	98.461	0.19	-0.13	33.75	
358.00	0.170	88.030	358.00	-0.56	-0.20	1.10	1652438.44	14313061.79	39°24'54.2181"N	80°57'26.7660"W	1.12	100.093	0.21	-0.03	-68.97	
506.00	0.060	358.620	506.00	-0.55	-0.11	1.32	1652438.65	14313061.88	39°24'54.2189"N	80°57'26.7632"W	1.32	94.812	0.12	-0.07	-60.41	APS EM <12-1/4">(358')(506'-2545')
597.00	0.300	23.890	597.00	-0.34	0.15	1.41	1652438.75	14313062.14	39°24'54.2215"N	80°57'26.7620"W	1.42	83.770	0.27	0.26	27.77	
688.00	0.270	32.390	688.00	-0.03	0.55	1.63	1652438.96	14313062.54	39°24'54.2255"N	80°57'26.7593"W	1.72	71.205	0.06	-0.03	9.34	
779.00	0.370	40.240	778.99	0.25	0.98	1.93	1652439.27	14313062.95	39°24'54.2295"N	80°57'26.7554"W	2.16	63.591	0.12	0.11	8.63	
870.00	0.400	58.710	869.99	0.45	1.35	2.39	1652439.73	14313063.34	39°24'54.2333"N	80°57'26.7495"W	2.75	60.595	0.14	0.03	20.30	
960.00	0.300	76.570	959.99	0.49	1.57	2.89	1652440.22	14313063.55	39°24'54.2355"N	80°57'26.7432"W	3.29	61.545	0.16	-0.11	19.84	
1050.00	0.450	82.330	1049.99	0.39	1.67	3.47	1652440.80	14313063.66	39°24'54.2365"N	80°57'26.7358"W	3.85	64.323	0.17	0.17	6.40	
1145.00	0.660	89.270	1144.98	0.13	1.72	4.39	1652441.72	14313063.71	39°24'54.2370"N	80°57'26.7241"W	4.71	68.535	0.23	0.22	7.31	
1239.00	0.810	99.110	1238.98	-0.37	1.63	5.58	1652442.92	14313063.61	39°24'54.2360"N	80°57'26.7089"W	5.81	73.761	0.21	0.16	10.47	
1334.00	1.390	106.580	1333.96	-1.38	1.19	7.35	1652444.68	14313063.18	39°24'54.2317"N	80°57'26.6863"W	7.45	80.796	0.63	0.61	7.86	
1428.00	1.240	143.200	1427.94	-3.03	0.05	9.05	1652446.38	14313062.04	39°24'54.2205"N	80°57'26.6647"W	9.05	89.676	0.89	-0.16	38.96	
1522.00	1.880	178.730	1521.90	-5.46	-2.30	9.70	1652447.03	14313059.68	39°24'54.1972"N	80°57'26.6565"W	9.97	103.372	1.20	0.68	37.80	
1617.00	3.500	182.850	1616.79	-9.62	-6.76	9.59	1652446.92	14313055.23	39°24'54.1532"N	80°57'26.6579"W	11.73	125.188	1.72	1.71	4.34	
1711.00	4.120	186.150	1710.59	-15.30	-12.98	9.08	1652446.41	14313049.01	39°24'54.0916"N	80°57'26.6644"W	15.84	145.026	0.70	0.66	3.51	
1805.00	3.320	191.760	1804.39	-20.65	-19.00	8.17	1652445.50	14313042.99	39°24'54.0321"N	80°57'26.6761"W	20.68	156.750	0.93	-0.85	5.97	
1900.00	2.070	219.670	1899.28	-23.86	-23.02	6.51	1652443.84	14313038.98	39°24'53.9925"N	80°57'26.6972"W	23.92	164.210	1.87	-1.32	29.38	
1994.00	1.720	263.420	1993.24	-23.95	-24.00	4.05	1652441.39	14313038.00	39°24'53.9828"N	80°57'26.7285"W	24.34	170.414	2.15	-0.37	67.82	
2089.00	1.550	322.300	2088.21	-21.94	-22.65	1.88	1652439.22	14313039.35	39°24'53.9961"N	80°57'26.7562"W	22.73	175.254	1.16	-0.18	40.93	
2183.00	1.950	9.650	2182.17	-19.34	-20.07	1.37	1652438.71	14313041.93	39°24'54.0217"N	80°57'26.7627"W	20.11	176.092	1.54	0.43	50.37	
2278.00	2.070	357.440	2277.11	-16.29	-16.76	1.57	1652438.90	14313045.23	39°24'54.0543"N	80°57'26.7602"W	16.83	174.665	0.47	0.13	-12.85	
2372.00	1.630	311.070	2371.07	-13.50	-14.19	0.48	1652437.82	14313047.81	39°24'54.0798"N	80°57'26.7740"W	14.19	178.056	1.61	-0.47	-49.33	
2467.00	1.290	259.140	2466.04	-12.16	-13.50	-1.59	1652435.75	14313048.49	39°24'54.0866"N	80°57'26.8003"W	13.59	186.707	1.38	-0.36	-54.66	
2545.00	1.630	228.920	2544.01	-12.42	-14.39	-3.29	1652434.05	14313047.60	39°24'54.0778"N	80°57'26.8220"W	14.76	192.860	1.06	0.44	-38.74	
2662.00	2.060	227.910	2660.95	-13.82	-16.90	-6.10	1652431.24	14313045.10	39°24'54.0530"N	80°57'26.8578"W	17.96	199.853	0.37	0.37	-0.86	APS EM <8-3/4">(2545')(2662'-5120')



Actual Wellpath Report

Alpine West Unit 1H AWP Proj: 22112'
Page 3 of 12



REFERENCE WELLPATH IDENTIFICATION				
Operator	ANTERO RESOURCES CORPORATION		Well	Alpine West Unit 1H
Field	Tyler		API	47-095-02600-0000
Facility	Sine Pad		Wellbore	Alpine West Unit 1H AWB
Slot	Slot #01			

WELLPATH DATA (242 stations)																
MD (ft)	Inclination (°)	Azimuth (°)	TVD (ft)	Vert Sect (ft)	North (ft)	East (ft)	Grid East (US ft)	Grid North (US ft)	Latitude	Longitude	Closure Dist (ft)	Closure Dir (°)	DLS (°/100ft)	Build Rate (°/100ft)	Turn Rate (°/100ft)	Comments
2756.00	3.860	201.070	2754.83	-16.84	-20.98	-8.49	1652428.85	14313041.01	39°24'54.0127"N	80°57'26.8883"W	22.64	202.035	2.37	1.91	-28.55	
2851.00	7.120	184.310	2849.38	-24.63	-29.84	-10.08	1652427.25	14313032.16	39°24'53.9251"N	80°57'26.9087"W	31.50	198.673	3.79	3.43	-17.64	
2948.00	8.060	181.550	2945.53	-36.45	-42.63	-10.72	1652426.62	14313019.37	39°24'53.7987"N	80°57'26.9169"W	43.96	194.115	1.04	0.97	-2.85	
3042.00	9.640	184.980	3038.41	-49.72	-57.06	-11.58	1652425.76	14313004.95	39°24'53.6561"N	80°57'26.9279"W	58.23	191.474	1.77	1.68	3.65	
3137.00	10.230	183.710	3131.99	-64.67	-73.40	-12.82	1652424.52	14312988.61	39°24'53.4946"N	80°57'26.9438"W	74.52	189.906	0.66	0.62	-1.34	
3231.00	10.230	188.560	3224.50	-79.66	-89.99	-14.60	1652422.74	14312972.04	39°24'53.3307"N	80°57'26.9666"W	91.17	189.216	0.92	0.00	5.16	
3326.00	11.770	188.490	3317.75	-95.61	-107.91	-17.29	1652420.06	14312954.12	39°24'53.1535"N	80°57'27.0009"W	109.29	189.101	1.62	1.62	-0.07	
3420.00	12.000	189.250	3409.73	-112.58	-127.04	-20.27	1652417.07	14312935.00	39°24'52.9645"N	80°57'27.0391"W	128.65	189.067	0.30	0.24	0.81	
3515.00	12.600	195.730	3502.56	-129.63	-146.76	-24.67	1652412.68	14312915.28	39°24'52.7696"N	80°57'27.0952"W	148.82	189.542	1.58	0.63	6.82	
3609.00	13.040	203.690	3594.22	-145.65	-166.35	-31.71	1652405.64	14312895.71	39°24'52.5761"N	80°57'27.1850"W	169.34	190.793	1.93	0.47	8.47	
3704.00	12.300	200.680	3686.91	-161.10	-185.63	-39.59	1652397.76	14312876.44	39°24'52.3855"N	80°57'27.2856"W	189.80	192.040	1.04	-0.78	-3.17	
3799.00	10.630	188.330	3780.02	-176.51	-203.77	-44.44	1652392.92	14312858.30	39°24'52.2063"N	80°57'27.3474"W	208.56	192.302	3.12	-1.76	-13.00	
3893.00	9.960	193.440	3872.51	-190.95	-220.25	-47.58	1652389.77	14312841.82	39°24'52.0433"N	80°57'27.3876"W	225.33	192.190	1.20	-0.71	5.44	
3988.00	11.010	195.640	3965.92	-205.20	-236.98	-51.94	1652385.42	14312825.10	39°24'51.8780"N	80°57'27.4431"W	242.60	192.361	1.18	1.11	2.32	
4083.00	11.040	192.510	4059.17	-220.26	-254.60	-56.35	1652381.01	14312807.49	39°24'51.7040"N	80°57'27.4995"W	260.76	192.481	0.63	0.03	-3.29	
4177.00	10.860	199.270	4151.46	-234.73	-271.74	-61.22	1652376.14	14312790.35	39°24'51.5345"N	80°57'27.5617"W	278.55	192.697	1.38	-0.19	7.19	
4271.00	11.400	208.750	4243.70	-247.74	-288.25	-68.62	1652368.75	14312773.86	39°24'51.3714"N	80°57'27.6560"W	296.30	193.390	2.03	0.57	10.09	
4366.00	11.630	206.680	4336.79	-260.53	-305.04	-77.43	1652359.94	14312757.08	39°24'51.2055"N	80°57'27.7684"W	314.71	194.243	0.50	0.24	-2.18	
4460.00	10.600	199.710	4429.03	-273.71	-321.64	-84.60	1652352.77	14312740.48	39°24'51.0414"N	80°57'27.8599"W	332.58	194.737	1.80	-1.10	-7.41	
4555.00	10.930	198.730	4522.36	-287.48	-338.40	-90.44	1652346.93	14312723.73	39°24'50.8759"N	80°57'27.9343"W	350.27	194.963	0.40	0.35	-1.03	
4650.00	11.340	200.480	4615.57	-301.63	-355.68	-96.60	1652340.77	14312706.45	39°24'50.7051"N	80°57'28.0129"W	368.56	195.195	0.56	0.43	1.84	
4744.00	13.350	200.120	4707.39	-316.99	-374.53	-103.57	1652333.81	14312687.61	39°24'50.5189"N	80°57'28.1018"W	388.58	195.458	2.14	2.14	-0.38	
4839.00	12.360	201.720	4800.01	-332.99	-394.27	-111.10	1652326.28	14312667.88	39°24'50.3237"N	80°57'28.1979"W	409.63	195.738	1.11	-1.04	1.68	
4933.00	12.260	194.320	4891.85	-348.77	-413.29	-117.30	1652320.09	14312648.87	39°24'50.1358"N	80°57'28.2770"W	429.61	195.844	1.68	-0.11	-7.87	
5028.00	13.160	197.210	4984.53	-365.74	-433.39	-122.99	1652314.40	14312628.77	39°24'49.9371"N	80°57'28.3496"W	450.51	195.843	1.16	0.95	3.04	
5120.00	12.840	190.330	5074.17	-382.93	-453.45	-127.92	1652309.47	14312608.72	39°24'49.7389"N	80°57'28.4126"W	471.15	195.754	1.72	-0.35	-7.48	
5240.00	9.060	189.820	5191.97	-402.67	-475.89	-131.93	1652305.46	14312586.29	39°24'49.5172"N	80°57'28.4637"W	493.84	195.494	3.15	-3.15	-0.42	BH AT Curve <8-1/2">(5120')(5240'-22087')
5334.00	8.480	240.500	5285.00	-410.27	-486.61	-139.23	1652298.16	14312575.57	39°24'49.4112"N	80°57'28.5569"W	506.14	195.967	7.98	-0.62	53.91	
5429.00	7.590	270.210	5379.11	-409.28	-490.04	-151.61	1652285.79	14312572.15	39°24'49.3774"N	80°57'28.7146"W	512.95	197.191	4.42	-0.94	31.27	
5524.00	14.390	289.960	5472.34	-399.55	-485.98	-169.00	1652288.40	14312576.20	39°24'49.4176"N	80°57'28.9362"W	514.53	199.175	8.08	7.16	20.79	

RECEIVED
 OFFICE OF THE
 ENVIRONMENTAL PROTECTION
 FEB 17 2023
 WV Department of
 Environmental Protection



Actual Wellpath Report

Alpine West Unit 1H AWP Proj: 22112'
Page 4 of 12



REFERENCE WELLPATH IDENTIFICATION				
Operator	ANTERO RESOURCES CORPORATION		Well	Alpine West Unit 1H
Field	Tyler		API	47-095-02600-0000
Facility	Sine Pad		Wellbore	Alpine West Unit 1H AWB
Slot	Slot #01			

WELLPATH DATA (242 stations) † = interpolated, ‡ = extrapolated station																
MD [ft]	Inclination [°]	Azimuth [°]	TVD [ft]	Vert Sect [ft]	North [ft]	East [ft]	Grid East [US ft]	Grid North [US ft]	Latitude	Longitude	Closure Dist [ft]	Closure Dir [°]	DLS [°/100ft]	Build Rate [°/100ft]	Turn Rate [°/100ft]	Comments
5618.00	19.970	307.030	5562.17	-378.59	-472.31	-192.83	1652244.58	14312589.87	39°24'49.5529"N	80°57'29.2397"W	510.15	202.209	7.94	5.94	18.16	
5713.00	26.540	316.530	5649.43	-345.50	-447.10	-220.42	1652217.00	14312615.07	39°24'49.8021"N	80°57'29.5911"W	498.48	206.244	7.94	6.92	10.00	
5807.00	32.620	322.370	5731.16	-302.07	-411.75	-250.37	1652187.06	14312650.40	39°24'50.1516"N	80°57'29.9725"W	481.90	211.303	7.15	6.47	6.21	
5902.00	39.020	326.560	5808.16	-248.55	-366.46	-282.53	1652154.92	14312695.67	39°24'50.5994"N	80°57'30.3819"W	462.73	217.631	7.21	6.74	4.41	
5997.00	46.870	327.900	5877.77	-185.61	-312.16	-317.42	1652120.04	14312749.96	39°24'51.1363"N	80°57'30.8261"W	445.19	225.479	8.11	8.05	1.41	
6048.00†	52.257	328.695	5910.90	-147.69	-279.19	-337.77	1652099.70	14312782.91	39°24'51.4622"N	80°57'31.0852"W	438.22	230.424	11.02	10.95	1.56	Middlesex: 6048' MD
6092.00	57.080	329.290	5936.34	-112.48	-248.43	-356.25	1652081.23	14312813.66	39°24'51.7663"N	80°57'31.3205"W	434.32	235.111	11.02	10.96	1.35	
6135.00	62.300	329.440	5958.03	-76.02	-216.50	-375.16	1652062.33	14312845.58	39°24'52.0820"N	80°57'31.5613"W	433.15	240.012	12.14	12.14	0.35	
6186.00	66.180	326.720	5980.19	-31.12	-177.53	-399.45	1652038.04	14312884.53	39°24'52.4672"N	80°57'31.8706"W	437.13	246.038	9.00	7.61	-5.33	
6232.00†	68.406	326.046	5997.95	10.10	-142.20	-422.95	1652014.56	14312919.85	39°24'52.8165"N	80°57'32.1697"W	446.21	251.417	5.02	4.84	-1.47	Burkett: 6232' MD
6281.00	70.780	325.350	6015.04	54.57	-104.26	-448.83	1651988.69	14312957.77	39°24'53.1916"N	80°57'32.4992"W	460.78	256.922	5.02	4.84	-1.42	
6314.00†	72.721	326.645	6025.37	84.96	-78.28	-466.35	1651971.17	14312983.74	39°24'53.4484"N	80°57'32.7223"W	472.88	260.471	6.96	5.88	3.92	Marcellus POE: 6314' MD
6375.00	76.330	328.970	6041.64	142.39	-28.54	-497.65	1651939.88	14313033.46	39°24'53.9402"N	80°57'33.1209"W	498.47	266.718	6.96	5.92	3.81	
6470.00	85.870	330.740	6056.33	234.64	52.54	-544.72	1651892.84	14313114.50	39°24'54.7417"N	80°57'33.7201"W	547.24	275.509	10.21	10.04	1.86	
6517.00	89.940	331.000	6058.04	280.98	93.55	-567.57	1651869.99	14313155.51	39°24'55.1472"N	80°57'34.0111"W	575.23	279.360	8.68	8.66	0.55	
6564.00	90.120	330.400	6058.02	327.35	134.54	-590.58	1651847.00	14313196.48	39°24'55.5524"N	80°57'34.3039"W	605.71	282.834	1.33	0.38	-1.28	
6659.00	90.150	327.590	6057.79	420.56	215.96	-639.51	1651798.09	14313277.86	39°24'56.3573"N	80°57'34.9269"W	674.99	288.660	2.96	0.03	-2.96	
6753.00	90.000	326.290	6057.67	512.08	294.74	-690.78	1651746.83	14313356.61	39°24'57.1362"N	80°57'35.5798"W	751.03	293.107	1.39	-0.16	-1.38	
6848.00	89.820	329.200	6057.82	604.86	375.07	-741.48	1651696.16	14313436.91	39°24'57.9304"N	80°57'36.2252"W	830.94	296.832	3.07	-0.19	3.06	
6939.00	88.890	333.890	6058.85	694.81	455.05	-784.82	1651652.83	14313516.85	39°24'58.7210"N	80°57'36.7771"W	907.20	300.106	5.25	-1.02	5.15	
7037.00	89.380	336.730	6060.33	792.44	544.07	-825.75	1651611.92	14313605.84	39°24'59.6010"N	80°57'37.2980"W	988.87	303.380	2.94	0.50	2.90	
7132.00	90.980	338.840	6060.03	887.36	632.01	-861.66	1651576.02	14313693.74	39°25'0.4703"N	80°57'37.7551"W	1068.60	306.259	2.79	1.68	2.22	
7226.00	91.320	338.330	6058.14	981.30	719.50	-895.98	1651541.72	14313781.20	39°25'1.3352"N	80°57'38.1919"W	1149.11	308.766	0.65	0.36	-0.54	
7321.00	91.230	336.430	6056.03	1076.17	807.17	-932.50	1651505.21	14313868.83	39°25'2.2018"N	80°57'38.6568"W	1233.32	310.879	2.00	-0.09	-2.00	
7415.00	89.720	332.780	6055.25	1169.71	892.07	-972.81	1651464.92	14313953.70	39°25'3.0411"N	80°57'39.1899"W	1319.90	312.521	4.20	-1.61	-3.88	
7510.00	90.580	335.650	6055.00	1264.19	977.60	-1014.13	1651423.62	14314039.19	39°25'3.8866"N	80°57'39.6959"W	1408.60	313.949	3.15	0.91	3.02	
7604.00	91.050	338.320	6053.66	1358.04	1064.10	-1050.87	1651386.89	14314125.66	39°25'4.7417"N	80°57'40.1636"W	1495.54	315.358	2.88	0.50	2.84	
7699.00	91.350	340.200	6051.67	1453.00	1152.92	-1084.51	1651353.27	14314214.44	39°25'5.6197"N	80°57'40.5917"W	1582.84	316.751	2.00	0.32	1.98	
7793.00	91.200	341.510	6049.58	1546.97	1241.70	-1115.33	1651322.46	14314303.18	39°25'6.4973"N	80°57'40.9839"W	1669.06	318.069	1.40	-0.16	1.39	
7888.00	91.080	340.880	6047.69	1641.93	1331.61	-1145.94	1651291.85	14314393.06	39°25'7.3860"N	80°57'41.3735"W	1756.80	319.286	0.67	-0.13	-0.66	

RECEIVED
 Office of Oil and Gas
 FEB 17 2023
 WV Department of
 Environmental Protection



Actual Wellpath Report

Alpine West Unit 1H AWP Proj: 22112'

Page 5 of 12



REFERENCE WELLPATH IDENTIFICATION				
Operator	ANTERO RESOURCES CORPORATION		Well	Alpine West Unit 1H
Field	Tyler		API	47-095-02600-0000
Facility	Sine Pad		Wellbore	Alpine West Unit 1H AWB
Slot	Slot #01			

WELLPATH DATA (242 stations)																
MD (ft)	Inclination (°)	Azimuth (°)	TVD (ft)	Vert Sect (ft)	North (ft)	East (ft)	Grid East (US ft)	Grid North (US ft)	Latitude	Longitude	Closure Dist (ft)	Closure Dir (°)	DLS (°/100ft)	Build Rate (°/100ft)	Turn Rate (°/100ft)	Comments
7982.00	90.490	339.810	6046.40	1735.92	1420.12	-1177.56	1651260.25	14314481.54	39°25'8.2610"N	80°57'41.7758"W	1844.82	320.335	1.30	-0.63	-1.14	
8077.00	90.370	339.700	6045.69	1830.91	1509.25	-1210.43	1651227.39	14314570.63	39°25'9.1420"N	80°57'42.1942"W	1934.67	321.270	0.17	-0.13	-0.12	
8171.00	90.550	342.450	6044.93	1924.89	1598.15	-1240.91	1651196.92	14314659.50	39°25'10.0209"N	80°57'42.5822"W	2023.35	322.172	2.93	0.19	2.93	
8266.00	90.550	342.610	6044.02	2019.80	1688.77	-1269.43	1651168.42	14314750.08	39°25'10.9166"N	80°57'42.9451"W	2112.67	323.068	0.17	0.00	0.17	
8360.00	90.680	345.610	6043.01	2113.56	1779.16	-1295.16	1651142.69	14314840.43	39°25'11.8101"N	80°57'43.2724"W	2200.65	323.947	3.19	0.14	3.19	
8454.00	91.050	344.780	6041.59	2207.18	1870.03	-1319.18	1651118.69	14314931.27	39°25'12.7083"N	80°57'43.5780"W	2288.50	324.800	0.97	0.39	-0.88	
8549.00	90.580	343.730	6040.24	2301.92	1961.45	-1344.95	1651092.92	14315022.65	39°25'13.6120"N	80°57'43.9059"W	2378.28	325.562	1.21	-0.49	-1.11	
8643.00	90.280	342.800	6039.54	2395.77	2051.47	-1372.02	1651065.87	14315112.63	39°25'14.5017"N	80°57'44.2503"W	2467.99	326.225	1.04	-0.32	-0.99	
8738.00	90.340	342.760	6039.02	2490.67	2142.21	-1400.14	1651037.75	14315203.34	39°25'15.3987"N	80°57'44.6082"W	2559.19	326.831	0.08	0.06	-0.04	
8832.00	90.830	341.020	6038.06	2584.62	2231.54	-1429.36	1651008.55	14315292.64	39°25'16.2817"N	80°57'44.9800"W	2650.07	327.359	1.92	0.52	-1.85	
8927.00	90.550	340.050	6036.92	2679.61	2321.11	-1461.01	1650976.91	14315382.16	39°25'17.1671"N	80°57'45.3829"W	2742.65	327.812	1.06	-0.29	-1.02	
9021.00	90.520	339.470	6036.04	2773.60	2409.30	-1493.53	1650944.40	14315470.32	39°25'18.0388"N	80°57'45.7968"W	2834.67	328.205	0.62	-0.03	-0.62	
9116.00	90.620	339.010	6035.10	2868.58	2498.13	-1527.20	1650910.75	14315559.11	39°25'18.9169"N	80°57'46.2254"W	2927.97	328.561	0.50	0.11	-0.48	
9210.00	90.580	337.730	6034.11	2962.53	2585.50	-1561.85	1650876.11	14315646.45	39°25'19.7806"N	80°57'46.6664"W	3020.63	328.865	1.36	-0.04	-1.36	
9305.00	90.830	336.100	6032.94	3057.37	2672.88	-1599.10	1650838.88	14315733.80	39°25'20.6444"N	80°57'47.1406"W	3114.71	329.109	1.74	0.26	-1.72	
9399.00	90.280	334.120	6032.03	3151.00	2758.14	-1638.65	1650799.34	14315819.02	39°25'21.4872"N	80°57'47.6442"W	3208.20	329.285	2.19	-0.59	-2.11	
9493.00	90.520	336.550	6031.38	3244.67	2843.56	-1677.88	1650760.13	14315904.40	39°25'22.3316"N	80°57'48.1436"W	3301.68	329.457	2.60	0.26	2.59	
9588.00	90.520	336.940	6030.51	3339.50	2930.84	-1715.38	1650722.64	14315991.65	39°25'23.1944"N	80°57'48.6211"W	3395.93	329.660	0.41	0.00	0.41	
9683.00	90.490	338.690	6029.68	3434.41	3018.80	-1751.25	1650686.79	14316079.57	39°25'24.0639"N	80°57'49.0777"W	3489.99	329.881	1.84	-0.03	1.84	
9778.00	90.490	341.520	6028.86	3529.40	3108.12	-1783.58	1650654.47	14316168.85	39°25'24.9468"N	80°57'49.4891"W	3583.51	330.151	2.98	0.00	2.98	
9872.00	90.550	344.210	6028.01	3623.28	3197.93	-1811.27	1650626.80	14316258.63	39°25'25.8346"N	80°57'49.8415"W	3675.25	330.473	2.86	0.06	2.86	
9967.00	90.520	344.030	6027.12	3718.05	3289.30	-1837.26	1650600.81	14316349.97	39°25'26.7377"N	80°57'50.1723"W	3767.63	330.814	0.19	-0.03	-0.19	
10062.00	90.620	344.960	6026.18	3812.76	3380.84	-1862.66	1650575.43	14316441.47	39°25'27.6425"N	80°57'50.4954"W	3859.99	331.148	0.98	0.11	0.98	
10156.00	90.460	344.270	6025.29	3906.47	3471.47	-1887.59	1650550.50	14316532.06	39°25'28.5383"N	80°57'50.8127"W	3951.47	331.465	0.75	-0.17	-0.73	
10251.00	90.710	345.960	6024.32	4001.10	3563.27	-1911.99	1650526.11	14316623.83	39°25'29.4458"N	80°57'51.1232"W	4043.84	331.783	1.80	0.26	1.78	
10345.00	90.490	346.600	6023.34	4094.55	3654.58	-1934.29	1650503.83	14316715.10	39°25'30.3483"N	80°57'51.4068"W	4134.90	332.109	0.72	-0.23	0.68	
10440.00	90.520	344.160	6022.50	4189.14	3746.50	-1958.26	1650479.86	14316806.98	39°25'31.2569"N	80°57'51.7119"W	4227.41	332.404	2.57	0.03	-2.57	
10534.00	90.250	337.170	6021.87	4283.08	3835.14	-1989.37	1650448.77	14316895.58	39°25'32.1331"N	80°57'52.1078"W	4320.40	332.583	7.44	-0.29	-7.44	
10629.00	89.600	335.050	6021.99	4377.84	3921.99	-2027.84	1650410.31	14316982.40	39°25'32.9917"N	80°57'52.5976"W	4415.22	332.659	2.33	-0.68	-2.23	
10724.00	89.850	336.520	6022.45	4472.56	4008.63	-2066.80	1650371.37	14317069.01	39°25'33.8481"N	80°57'53.0937"W	4510.08	332.725	1.57	0.26	1.56	

RECEIVED
Office of Oil and Gas
FEB 17 2023
WV Department of
Environmental Protection



Actual Wellpath Report

Alpine West Unit 1H AWP Proj: 22112'
Page 6 of 12



REFERENCE WELLPATH IDENTIFICATION			
Operator	ANTERO RESOURCES CORPORATION	Well	Alpine West Unit 1H
Field	Tyler	API	47-095-02600-0000
Facility	Sine Pad	Wellbore	Alpine West Unit 1H AWB
Slot	Slot #01		

WELLPATH DATA (242 stations)																
MD (ft)	Inclination (°)	Azimuth (°)	TVD (ft)	Vert Sect (ft)	North (ft)	East (ft)	Grid East (US ft)	Grid North (US ft)	Latitude	Longitude	Closure Dist (ft)	Closure Dir (°)	DLS (°/100ft)	Build Rate (°/100ft)	Turn Rate (°/100ft)	Comments
10818.00	89.690	337.130	6022.83	4566.40	4095.04	-2103.79	1650334.39	14317155.39	39°25'34.7023"N	80°57'53.5647"W	4603.84	332.809	0.67	-0.17	0.65	
10913.00	89.660	338.620	6023.36	4661.33	4183.04	-2139.57	1650298.62	14317243.35	39°25'35.5722"N	80°57'54.0202"W	4698.47	332.911	1.57	-0.03	1.57	
11007.00	89.970	339.730	6023.67	4755.31	4270.90	-2172.99	1650265.22	14317331.17	39°25'36.4407"N	80°57'54.4456"W	4791.92	333.033	1.23	0.33	1.18	
11102.00	89.690	337.890	6023.95	4850.28	4359.47	-2207.33	1650230.90	14317419.71	39°25'37.3162"N	80°57'54.8827"W	4886.44	333.146	1.96	-0.29	-1.94	
11196.00	90.800	340.330	6023.55	4944.26	4447.29	-2240.84	1650197.40	14317507.49	39°25'38.1842"N	80°57'55.3094"W	4979.93	333.258	2.85	1.18	2.60	
11290.00	89.720	341.150	6023.12	5038.25	4536.02	-2271.85	1650166.40	14317596.19	39°25'39.0613"N	80°57'55.7041"W	5073.14	333.396	1.44	-1.15	0.87	
11385.00	89.600	343.630	6023.69	5133.17	4626.56	-2300.58	1650137.68	14317686.69	39°25'39.9563"N	80°57'56.0698"W	5166.99	333.561	2.61	-0.13	2.61	
11479.00	90.280	343.810	6023.78	5226.98	4716.79	-2326.94	1650111.34	14317776.88	39°25'40.8482"N	80°57'56.4052"W	5259.54	333.741	0.75	0.72	0.19	
11574.00	89.970	341.320	6023.58	5321.89	4807.42	-2355.40	1650082.88	14317867.48	39°25'41.7440"N	80°57'56.7675"W	5353.43	333.897	2.64	-0.33	-2.62	
11668.00	90.000	338.880	6023.60	5415.88	4895.80	-2387.39	1650050.90	14317955.82	39°25'42.6176"N	80°57'57.1748"W	5446.88	334.004	2.60	0.03	-2.60	
11763.00	90.000	339.300	6023.60	5510.86	4984.54	-2421.30	1650017.01	14318044.53	39°25'43.4949"N	80°57'57.6064"W	5541.51	334.091	0.44	0.00	0.44	
11857.00	89.970	339.640	6023.63	5604.86	5072.57	-2454.26	1649984.06	14318132.52	39°25'44.3650"N	80°57'58.0261"W	5635.10	334.181	0.36	-0.03	0.36	
11951.00	89.970	339.790	6023.68	5698.86	5160.74	-2486.85	1649951.48	14318220.66	39°25'45.2366"N	80°57'58.4410"W	5728.67	334.272	0.16	0.00	0.16	
12046.00	90.090	340.330	6023.63	5793.85	5250.05	-2519.25	1649919.10	14318309.93	39°25'46.1193"N	80°57'58.8534"W	5823.20	334.366	0.58	0.13	0.57	
12140.00	90.000	341.830	6023.55	5887.84	5338.97	-2549.73	1649888.63	14318398.81	39°25'46.9983"N	80°57'59.2414"W	5916.56	334.472	1.60	-0.10	1.60	
12235.00	90.030	341.860	6023.53	5982.80	5429.24	-2579.33	1649859.04	14318489.04	39°25'47.8906"N	80°57'59.6182"W	6010.79	334.588	0.04	0.03	0.03	
12329.00	90.060	341.270	6023.45	6076.77	5518.41	-2609.05	1649829.33	14318578.18	39°25'48.7720"N	80°57'59.9966"W	6104.10	334.696	0.63	0.03	-0.63	
12424.00	89.630	341.300	6023.71	6171.75	5608.39	-2639.54	1649798.86	14318668.12	39°25'49.6614"N	80°58'0.3847"W	6198.48	334.796	0.45	-0.45	0.03	
12519.00	90.090	342.620	6023.94	6266.69	5698.72	-2668.95	1649769.45	14318758.41	39°25'50.5543"N	80°58'0.7592"W	6292.75	334.904	1.47	0.48	1.39	
12614.00	90.030	341.440	6023.84	6361.64	5789.08	-2698.26	1649740.16	14318848.74	39°25'51.4475"N	80°58'1.1323"W	6387.02	335.010	1.24	-0.06	-1.24	
12709.00	89.910	340.210	6023.89	6456.63	5878.81	-2729.47	1649708.97	14318938.43	39°25'52.3344"N	80°58'1.5295"W	6481.54	335.095	1.30	-0.13	-1.29	
12804.00	90.030	338.790	6023.94	6551.62	5967.79	-2762.73	1649675.71	14319027.38	39°25'53.2140"N	80°58'1.9531"W	6576.26	335.159	1.50	0.13	-1.49	
12898.00	89.970	337.730	6023.94	6645.57	6055.10	-2797.55	1649640.91	14319114.66	39°25'54.0771"N	80°58'2.3964"W	6670.12	335.202	1.13	-0.06	-1.13	
12993.00	90.030	338.170	6023.94	6740.50	6143.15	-2833.22	1649605.26	14319202.67	39°25'54.9475"N	80°58'2.8505"W	6765.02	335.241	0.47	0.06	0.46	
13088.00	90.030	339.310	6023.89	6835.47	6231.69	-2867.66	1649570.83	14319291.17	39°25'55.8226"N	80°58'3.2891"W	6859.84	335.289	1.20	0.00	1.20	
13183.00	90.000	339.720	6023.87	6930.47	6320.68	-2900.91	1649537.59	14319380.13	39°25'56.7023"N	80°58'3.7124"W	6954.59	335.347	0.43	-0.03	0.43	
13277.00	90.090	341.620	6023.79	7024.46	6409.38	-2932.02	1649506.49	14319468.79	39°25'57.5790"N	80°58'4.1085"W	7048.18	335.418	2.02	0.10	2.02	
13372.00	90.030	341.880	6023.69	7119.42	6499.60	-2961.77	1649476.75	14319558.97	39°25'58.4708"N	80°58'4.4872"W	7142.61	335.502	0.28	-0.06	0.27	
13466.00	90.030	342.200	6023.64	7213.37	6589.02	-2990.76	1649447.78	14319648.36	39°25'59.3547"N	80°58'4.8562"W	7236.01	335.587	0.34	0.00	0.34	
13561.00	90.090	342.950	6023.55	7308.28	6679.66	-3019.21	1649419.34	14319738.96	39°26'0.2506"N	80°58'5.2184"W	7330.31	335.677	0.79	0.06	0.79	

RECEIVED
Office of Oil and Gas
FEB 17 2023
NY Department of
Environmental Protection



Actual Wellpath Report

Alpine West Unit 1H AWP Proj: 22112'
Page 7 of 12



REFERENCE WELLPATH IDENTIFICATION			
Operator	ANTERO RESOURCES CORPORATION	Well	Alpine West Unit 1H
Field	Tyler	API	47-095-02600-0000
Facility	Sine Pad	Wellbore	Alpine West Unit 1H AWB
Slot	Slot #01		

WELLPATH DATA (242 stations)																
MD [ft]	Inclination [°]	Azimuth [°]	TVD [ft]	Vert Sect [ft]	North [ft]	East [ft]	Grid East [US ft]	Grid North [US ft]	Latitude	Longitude	Closure Dist [ft]	Closure Dir [°]	DLS [°/100ft]	Build Rate [°/100ft]	Turn Rate [°/100ft]	Comments
13656.00	90.180	342.470	6023.32	7403.18	6770.36	-3047.44	1649391.12	14319829.63	39°26'1.1472"N	80°58'5.5778"W	7424.60	335.767	0.51	0.09	-0.51	
13750.00	90.000	340.450	6023.17	7497.15	6859.48	-3077.33	1649361.25	14319918.71	39°26'2.0281"N	80°58'5.9583"W	7518.14	335.838	2.16	-0.19	-2.15	
13844.00	90.060	340.560	6023.12	7591.15	6948.09	-3108.70	1649329.89	14320007.29	39°26'2.9040"N	80°58'6.3577"W	7611.83	335.895	0.13	0.06	0.12	
13939.00	89.940	338.860	6023.12	7686.14	7037.19	-3141.64	1649296.96	14320096.35	39°26'3.7848"N	80°58'6.7772"W	7706.62	335.942	1.79	-0.13	-1.79	
14034.00	89.660	338.300	6023.46	7781.11	7125.63	-3176.33	1649262.28	14320184.76	39°26'4.6590"N	80°58'7.2189"W	7801.52	335.975	0.66	-0.29	-0.59	
14128.00	89.660	337.610	6024.01	7875.04	7212.76	-3211.61	1649227.01	14320271.85	39°26'5.5202"N	80°58'7.6682"W	7895.46	335.998	0.73	0.00	-0.73	
14223.00	88.920	336.360	6025.19	7969.89	7300.19	-3248.75	1649189.89	14320359.24	39°26'6.3844"N	80°58'8.1411"W	7990.44	336.010	1.53	-0.78	-1.32	
14317.00	88.980	337.380	6026.91	8063.72	7386.61	-3285.67	1649152.99	14320445.63	39°26'7.2387"N	80°58'8.6113"W	8084.41	336.020	1.09	0.06	1.09	
14412.00	88.920	337.040	6028.65	8158.58	7474.18	-3322.46	1649116.21	14320533.17	39°26'8.1043"N	80°58'9.0798"W	8179.37	336.034	0.36	-0.06	-0.36	
14506.00	88.890	338.120	6030.45	8252.47	7561.06	-3358.31	1649080.38	14320620.01	39°26'8.9631"N	80°58'9.5363"W	8273.32	336.051	1.15	-0.03	1.15	
14601.00	88.950	339.280	6032.24	8347.42	7649.55	-3392.81	1649045.89	14320708.47	39°26'9.8379"N	80°58'9.9756"W	8368.20	336.081	1.22	0.06	1.22	
14695.00	88.920	340.560	6033.99	8441.40	7737.82	-3425.08	1649013.64	14320796.70	39°26'10.7104"N	80°58'10.3865"W	8461.98	336.124	1.36	-0.03	1.36	
14789.00	88.980	341.110	6035.71	8535.38	7826.60	-3455.93	1648982.79	14320885.44	39°26'11.5879"N	80°58'10.7793"W	8555.65	336.176	0.59	0.06	0.59	
14884.00	88.830	341.020	6037.53	8630.35	7916.44	-3486.75	1648951.99	14320975.25	39°26'12.4759"N	80°58'11.1718"W	8650.29	336.229	0.18	-0.16	-0.09	
14978.00	88.800	341.500	6039.47	8724.31	8005.44	-3516.94	1648921.80	14321064.21	39°26'13.3556"N	80°58'11.5562"W	8743.91	336.283	0.51	-0.03	0.51	
15072.00	91.750	346.840	6039.02	8818.03	8095.83	-3542.57	1648896.18	14321154.56	39°26'14.2491"N	80°58'11.8825"W	8836.98	336.367	6.49	3.14	5.68	
15167.00	91.260	348.290	6036.52	8912.19	8188.57	-3563.02	1648875.74	14321247.26	39°26'15.1657"N	80°58'12.1427"W	8930.16	336.485	1.61	-0.52	1.53	
15261.00	90.950	346.090	6034.71	9005.46	8280.20	-3583.86	1648854.92	14321338.86	39°26'16.0715"N	80°58'12.4079"W	9022.52	336.596	2.36	-0.33	-2.34	
15356.00	91.200	342.270	6032.93	9100.18	8371.57	-3609.75	1648829.04	14321430.20	39°26'16.9746"N	80°58'12.7375"W	9116.66	336.675	4.03	0.26	-4.02	
15450.00	90.950	337.810	6031.16	9194.14	8459.89	-3641.82	1648796.98	14321518.48	39°26'17.8476"N	80°58'13.1459"W	9210.46	336.709	4.75	-0.27	-4.74	
15545.00	88.340	336.850	6031.75	9289.02	8547.54	-3678.43	1648760.38	14321606.09	39°26'18.7140"N	80°58'13.6122"W	9305.44	336.715	2.93	-2.75	-1.01	
15639.00	88.280	337.250	6034.52	9382.84	8634.06	-3715.07	1648723.76	14321692.58	39°26'19.5693"N	80°58'14.0788"W	9399.40	336.719	0.43	-0.06	0.43	
15734.00	87.970	338.370	6037.63	9477.71	8721.97	-3750.93	1648687.91	14321780.46	39°26'20.4383"N	80°58'14.5355"W	9494.33	336.730	1.22	-0.33	1.18	
15828.00	88.000	338.710	6040.94	9571.62	8809.40	-3785.30	1648653.56	14321867.85	39°26'21.3025"N	80°58'14.9732"W	9588.23	336.747	0.36	0.03	0.36	
15922.00	88.030	339.680	6044.19	9665.55	8897.22	-3818.67	1648620.20	14321955.63	39°26'22.1705"N	80°58'15.3981"W	9682.08	336.771	1.03	0.03	1.03	
16017.00	87.970	339.850	6047.51	9760.49	8986.30	-3851.50	1648587.38	14322044.68	39°26'23.0511"N	80°58'15.8163"W	9776.90	336.800	0.19	-0.06	0.18	
16111.00	89.750	341.960	6049.38	9854.45	9075.10	-3882.25	1648556.65	14322133.45	39°26'23.9288"N	80°58'16.2077"W	9870.63	336.839	2.94	1.89	2.24	
16206.00	90.280	341.540	6049.36	9949.41	9165.33	-3912.00	1648526.91	14322223.63	39°26'24.8206"N	80°58'16.5866"W	9965.28	336.886	0.71	0.56	-0.44	
16300.00	89.850	340.690	6049.25	10043.40	9254.26	-3942.42	1648496.50	14322312.53	39°26'25.6998"N	80°58'16.9740"W	10059.03	336.925	1.01	-0.46	-0.90	
16394.00	89.910	340.320	6049.45	10137.40	9342.87	-3973.79	1648465.14	14322401.11	39°26'26.5756"N	80°58'17.3735"W	10152.85	336.959	0.40	0.06	-0.39	

RECEIVED
Office of Civil and Gas
Environmental Protection
FEB 17 2023
WV Department of Environmental Protection



Actual Wellpath Report

Alpine West Unit 1H AWP Proj: 22112'

Page 8 of 12



REFERENCE WELLPATH IDENTIFICATION

Operator	ANTERO RESOURCES CORPORATION	Well	Alpine West Unit 1H
Field	Tyler	API	47-095-02600-0000
Facility	Sine Pad	Wellbore	Alpine West Unit 1H AWB
Slot	Slot #01		

WELLPATH DATA (242 stations)

MD (ft)	Inclination (°)	Azimuth (°)	TVD (ft)	Vert Sect (ft)	North (ft)	East (ft)	Grid East (US ft)	Grid North (US ft)	Latitude	Longitude	Closure Dist (ft)	Closure Dir (°)	DLS (°/100ft)	Build Rate (°/100ft)	Turn Rate (°/100ft)	Comments
16489.00	90.340	339.480	6049.24	10232.39	9432.09	-4006.44	1648432.51	14322490.29	39°26'27.4575"N	80°58'17.7892"W	10247.72	336.986	0.99	0.45	-0.88	
16583.00	89.690	337.810	6049.21	10326.36	9519.63	-4040.67	1648398.29	14322577.79	39°26'28.3228"N	80°58'18.2252"W	10341.68	337.001	1.91	-0.69	-1.78	
16677.00	89.720	336.620	6049.70	10420.24	9606.29	-4077.07	1648361.91	14322664.42	39°26'29.1794"N	80°58'18.6888"W	10435.68	337.003	1.27	0.03	-1.27	
16772.00	89.690	335.200	6050.19	10514.98	9693.01	-4115.84	1648323.15	14322751.11	39°26'30.0367"N	80°58'19.1827"W	10530.66	336.993	1.50	-0.03	-1.49	
16867.00	89.880	334.670	6050.54	10609.59	9779.07	-4156.09	1648282.92	14322837.13	39°26'30.8873"N	80°58'19.6953"W	10625.59	336.975	0.59	0.20	-0.56	
16961.00	89.970	336.410	6050.67	10703.28	9864.63	-4195.01	1648244.01	14322922.65	39°26'31.7330"N	80°58'20.1911"W	10719.56	336.962	1.85	0.10	1.85	
17056.00	89.910	338.210	6050.77	10798.16	9952.27	-4231.65	1648207.38	14323010.26	39°26'32.5994"N	80°58'20.6578"W	10814.56	336.965	1.90	-0.06	1.89	
17150.00	90.030	339.840	6050.82	10892.14	10040.04	-4265.30	1648173.75	14323097.99	39°26'33.4669"N	80°58'21.0863"W	10908.49	336.983	1.74	0.13	1.73	
17245.00	90.030	341.480	6050.77	10987.14	10129.68	-4296.76	1648142.30	14323187.59	39°26'34.3529"N	80°58'21.4870"W	11003.29	337.015	1.73	0.00	1.73	
17339.00	90.090	342.380	6050.67	11081.09	10219.04	-4325.92	1648113.16	14323276.92	39°26'35.2362"N	80°58'21.8583"W	11096.95	337.056	0.96	0.06	0.96	
17434.00	90.060	342.200	6050.54	11176.02	10309.54	-4354.82	1648084.27	14323367.38	39°26'36.1308"N	80°58'22.2263"W	11191.56	337.100	0.19	-0.03	-0.19	
17528.00	90.030	343.190	6050.47	11269.92	10399.28	-4382.78	1648056.32	14323457.09	39°26'37.0178"N	80°58'22.5823"W	11285.11	337.147	1.05	-0.03	1.05	
17623.00	89.970	344.460	6050.47	11364.72	10490.52	-4409.24	1648029.87	14323548.29	39°26'37.9196"N	80°58'22.9193"W	11379.47	337.203	1.34	-0.06	1.34	
17717.00	90.180	344.550	6050.35	11458.45	10581.10	-4434.35	1648004.76	14323638.84	39°26'38.8150"N	80°58'23.2391"W	11472.72	337.262	0.24	0.22	0.10	
17812.00	90.180	344.280	6050.05	11553.18	10672.61	-4459.88	1647979.25	14323730.31	39°26'39.7195"N	80°58'23.5641"W	11566.98	337.321	0.28	0.00	-0.28	
17906.00	90.120	342.830	6049.80	11647.01	10762.76	-4486.49	1647952.65	14323820.42	39°26'40.6106"N	80°58'23.9029"W	11660.43	337.371	1.54	-0.06	-1.54	
18000.00	90.000	341.900	6049.70	11740.94	10852.34	-4514.96	1647924.19	14323909.97	39°26'41.4960"N	80°58'24.2656"W	11754.07	337.411	1.00	-0.13	-0.99	
18095.00	90.220	341.640	6049.52	11835.90	10942.57	-4544.68	1647894.48	14324000.16	39°26'42.3879"N	80°58'24.6440"W	11848.80	337.446	0.36	0.23	-0.27	
18189.00	90.120	340.390	6049.24	11929.88	11031.46	-4575.26	1647863.91	14324089.01	39°26'43.2665"N	80°58'25.0335"W	11942.62	337.474	1.33	-0.11	-1.33	
18284.00	90.150	339.010	6049.02	12024.88	11120.55	-4608.22	1647830.97	14324178.07	39°26'44.1472"N	80°58'25.4533"W	12037.54	337.491	1.45	0.03	-1.45	
18379.00	90.180	336.890	6048.74	12119.80	11208.60	-4643.88	1647795.32	14324266.08	39°26'45.0175"N	80°58'25.9075"W	12132.53	337.495	2.23	0.03	-2.23	
18474.00	90.030	335.760	6048.57	12214.59	11295.60	-4682.03	1647757.19	14324353.05	39°26'45.8775"N	80°58'26.3934"W	12227.51	337.486	1.20	-0.16	-1.19	
18568.00	90.340	336.120	6048.27	12308.34	11381.44	-4720.35	1647718.88	14324438.85	39°26'46.7259"N	80°58'26.8816"W	12321.48	337.474	0.51	0.33	0.38	
18663.00	90.280	336.060	6047.75	12403.11	11468.28	-4758.86	1647680.39	14324525.66	39°26'47.5843"N	80°58'27.3721"W	12416.45	337.464	0.09	-0.06	-0.06	
18757.00	90.180	337.060	6047.38	12496.92	11554.52	-4796.25	1647643.02	14324611.87	39°26'48.4368"N	80°58'27.8484"W	12510.43	337.457	1.07	-0.11	1.06	
18852.00	90.620	337.980	6046.71	12591.82	11642.30	-4832.57	1647606.71	14324699.61	39°26'49.3045"N	80°58'28.3111"W	12605.43	337.457	1.07	0.46	0.97	
18946.00	90.460	340.150	6045.83	12685.80	11730.09	-4866.15	1647573.14	14324787.36	39°26'50.1722"N	80°58'28.7389"W	12699.38	337.469	2.31	-0.17	2.31	
19041.00	90.580	340.510	6044.96	12780.79	11819.54	-4898.13	1647541.18	14324876.78	39°26'51.0564"N	80°58'29.1462"W	12794.26	337.490	0.40	0.13	0.38	
19135.00	90.650	340.040	6043.95	12874.78	11908.02	-4929.85	1647509.46	14324965.22	39°26'51.9309"N	80°58'29.5502"W	12888.15	337.511	0.51	0.07	-0.50	
19230.00	90.620	339.930	6042.90	12969.78	11997.27	-4962.37	1647476.96	14325054.44	39°26'52.8132"N	80°58'29.9644"W	12983.05	337.529	0.12	-0.03	-0.12	

RECEIVED
Office of Environmental Protection
FEB 17 2023
Environmental Protection
NM Department of



Actual Wellpath Report

Alpine West Unit 1H AWP Proj: 22112'
Page 9 of 12



REFERENCE WELLPATH IDENTIFICATION				
Operator	ANTERO RESOURCES CORPORATION		Well	Alpine West Unit 1H
Field	Tyler		API	47-095-02600-0000
Facility	Sine Pad		Wellbore	Alpine West Unit 1H AWB
Slot	Slot #01			

WELLPATH DATA (242 stations)																
MD (ft)	Inclination (°)	Azimuth (°)	TVD (ft)	Vert Sect (ft)	North (ft)	East (ft)	Grid East (US ft)	Grid North (US ft)	Latitude	Longitude	Closure Dist (ft)	Closure Dir (°)	DLS (ft/100ft)	Build Rate (ft/100ft)	Turn Rate (ft/100ft)	Comments
19325.00	90.680	340.350	6041.82	13064.77	12086.62	-4994.64	1647444.71	14325143.75	39°26'53.6963"N	80°58'30.3754"W	13077.95	337.548	0.45	0.06	0.44	
19419.00	90.650	340.010	6040.73	13158.77	12175.04	-5026.51	1647412.85	14325232.14	39°26'54.5703"N	80°58'30.7814"W	13171.84	337.567	0.36	-0.03	-0.36	
19514.00	90.580	339.180	6039.71	13253.76	12264.08	-5059.63	1647379.74	14325321.14	39°26'55.4504"N	80°58'31.2033"W	13266.78	337.581	0.88	-0.07	-0.87	
19609.00	90.580	338.120	6038.75	13348.72	12352.55	-5094.21	1647345.17	14325409.58	39°26'56.3249"N	80°58'31.6438"W	13361.76	337.589	1.12	0.00	-1.12	
19704.00	90.680	337.730	6037.71	13443.64	12440.58	-5129.91	1647309.49	14325497.57	39°26'57.1950"N	80°58'32.0986"W	13456.75	337.591	0.42	0.11	-0.41	
19799.00	90.650	338.180	6036.60	13538.57	12528.63	-5165.57	1647273.85	14325585.58	39°26'58.0654"N	80°58'32.5528"W	13551.74	337.594	0.47	-0.03	0.47	
19893.00	90.740	338.280	6035.46	13632.51	12615.92	-5200.43	1647239.00	14325672.84	39°26'58.9282"N	80°58'32.9969"W	13645.73	337.598	0.14	0.10	0.11	
19988.00	90.650	337.800	6034.31	13727.44	12704.02	-5235.95	1647203.49	14325760.90	39°26'59.7990"N	80°58'33.4494"W	13740.72	337.601	0.51	-0.09	-0.51	
20083.00	90.520	337.900	6033.34	13822.36	12792.01	-5271.77	1647167.69	14325848.85	39°27'0.6687"N	80°58'33.9057"W	13835.71	337.603	0.17	-0.14	0.11	
20178.00	90.650	339.130	6032.37	13917.32	12880.40	-5306.56	1647132.91	14325937.21	39°27'1.5424"N	80°58'34.3489"W	13930.69	337.609	1.30	0.14	1.29	
20273.00	90.920	339.510	6031.07	14012.30	12969.27	-5340.10	1647099.38	14326026.04	39°27'2.4208"N	80°58'34.7763"W	14025.64	337.621	0.49	0.28	0.40	
20367.00	90.890	339.850	6029.59	14106.28	13057.41	-5372.74	1647066.75	14326114.15	39°27'3.2920"N	80°58'35.1920"W	14119.57	337.634	0.36	-0.03	0.36	
20462.00	90.980	340.930	6028.04	14201.27	13146.88	-5404.62	1647034.89	14326203.59	39°27'4.1765"N	80°58'35.5981"W	14214.45	337.653	1.14	0.09	1.14	
20557.00	90.950	341.830	6026.44	14296.23	13236.90	-5434.95	1647004.57	14326293.57	39°27'5.0662"N	80°58'35.9844"W	14309.23	337.677	0.95	-0.03	0.95	
20652.00	90.920	341.210	6024.89	14391.19	13326.99	-5465.06	1646974.47	14326383.62	39°27'5.9566"N	80°58'36.3680"W	14404.01	337.703	0.65	-0.03	-0.65	
20746.00	90.310	340.970	6023.88	14485.17	13415.91	-5495.52	1646944.02	14326472.50	39°27'6.8356"N	80°58'36.7560"W	14497.84	337.725	0.70	-0.65	-0.26	
20841.00	90.280	342.000	6023.39	14580.14	13505.99	-5525.69	1646913.87	14326562.55	39°27'7.7259"N	80°58'37.1403"W	14592.63	337.749	1.08	-0.03	1.08	
20935.00	90.370	343.150	6022.85	14674.05	13595.67	-5553.83	1646885.73	14326652.20	39°27'8.6124"N	80°58'37.4988"W	14686.30	337.780	1.23	0.10	1.22	
21030.00	90.490	342.890	6022.14	14768.93	13686.53	-5581.58	1646858.00	14326743.02	39°27'9.5104"N	80°58'37.8522"W	14780.90	337.814	0.30	0.13	-0.27	
21124.00	90.580	343.750	6021.26	14862.78	13776.57	-5608.56	1646831.03	14326833.02	39°27'10.4004"N	80°58'38.1958"W	14874.46	337.848	0.92	0.10	0.91	
21219.00	90.490	344.120	6020.38	14957.56	13867.85	-5634.84	1646804.76	14326924.27	39°27'11.3027"N	80°58'38.5307"W	14968.93	337.887	0.40	-0.09	0.39	
21314.00	90.520	344.290	6019.54	15052.32	13959.26	-5660.70	1646778.91	14327015.64	39°27'12.2062"N	80°58'38.8600"W	15063.35	337.927	0.18	0.03	0.18	
21409.00	90.680	344.560	6018.54	15147.04	14050.77	-5686.21	1646753.41	14327107.11	39°27'13.1107"N	80°58'39.1849"W	15157.74	337.967	0.33	0.17	0.28	
21503.00	90.650	344.580	6017.45	15240.75	14141.37	-5711.22	1646728.42	14327197.68	39°27'14.0062"N	80°58'39.5034"W	15251.11	338.008	0.04	-0.03	0.02	
21597.00	90.650	343.100	6016.39	15334.55	14231.65	-5737.38	1646702.27	14327287.92	39°27'14.8985"N	80°58'39.8368"W	15344.62	338.044	1.57	0.00	-1.57	
21692.00	90.710	339.560	6015.26	15429.50	14321.63	-5767.78	1646671.87	14327377.87	39°27'15.7879"N	80°58'40.2239"W	15439.44	338.064	3.73	0.06	-3.73	
21786.00	90.580	338.770	6014.20	15523.48	14409.48	-5801.21	1646638.46	14327465.68	39°27'16.6562"N	80°58'40.6498"W	15533.42	338.070	0.85	-0.14	-0.84	
21881.00	90.680	338.950	6013.16	15618.45	14498.08	-5835.47	1646604.21	14327554.24	39°27'17.5320"N	80°58'41.0863"W	15628.41	338.075	0.22	0.11	0.19	
21975.00	90.490	339.430	6012.20	15712.44	14585.94	-5868.86	1646570.83	14327642.07	39°27'18.4005"N	80°58'41.5118"W	15722.38	338.082	0.55	-0.20	0.51	
22070.00	90.490	339.520	6011.38	15807.43	14674.91	-5902.17	1646537.54	14327731.00	39°27'19.2798"N	80°58'41.9361"W	15817.35	338.090	0.09	0.00	0.09	



Actual Wellpath Report

Alpine West Unit 1H AWP Proj: 22112'
Page 10 of 12



REFERENCE WELLPATH IDENTIFICATION			
Operator	ANTERO RESOURCES CORPORATION	Well	Alpine West Unit 1H
Field	Tyler	API	47-095-02600-0000
Facility	Sine Pad	Wellbore	Alpine West Unit 1H AWB
Slot	Slot #01		

WELLPATH DATA (242 stations) † = interpolated, ‡ = extrapolated station																
MD [ft]	Inclination [°]	Azimuth [°]	TVD [ft]	Vert Sect [ft]	North [ft]	East [ft]	Grid East [US ft]	Grid North [US ft]	Latitude	Longitude	Closure Dist [ft]	Closure Dir [°]	DLS [°/100ft]	Build Rate [°/100ft]	Turn Rate [°/100ft]	Comments
22087.00	90.520	339.200	6011.23	15824.42	14690.82	-5908.16	1646531.55	14327746.90	39°27'19.4371"N	80°58'42.0125"W	15834.35	338.092	1.89	0.18	-1.88	
22112.00‡	90.520	339.200	6011.01	15849.42	14714.19	-5917.04	1646522.67	14327770.26	39°27'19.6681"N	80°58'42.1256"W	15859.34	338.093	0.00	0.00	0.00	Projected MD at TD: 22112' MD

HOLE & CASING SECTIONS - Ref Wellbore: Alpine West Unit 1H AWB Ref Wellpath: Alpine West Unit 1H AWP Proj: 22112'									
String/Diameter	Start MD [ft]	End MD [ft]	Interval [ft]	Start TVD [ft]	End TVD [ft]	Start N/S [ft]	Start E/W [ft]	End N/S [ft]	End E/W [ft]
20in Conductor	30.00	110.00	80.00	30.00	110.00	0.00	0.00	0.00	0.13
17.5in Open Hole	110.00	465.00	355.00	110.00	465.00	0.00	0.13	-0.15	1.30
13.375in Casing Surface	30.00	465.00	435.00	30.00	465.00	0.00	0.00	-0.15	1.30
12.25in Open Hole	465.00	2617.00	2152.00	465.00	2615.98	-0.15	1.30	-15.86	-4.95
9.625in Casing Intermediate	30.00	2606.60	2576.60	30.00	2605.59	0.00	0.00	-15.63	-4.69
8.75in Open Hole	2617.00	5191.00	2574.00	2615.98	5143.69	-15.86	-4.95	-467.65	-130.48
8.5in Open Hole	5191.00	22112.00	16921.00	5143.69	6011.01	-467.65	-130.48	14714.19	-5917.04
5.5in Casing Production	30.00	22112.00	22082.00	30.00	6011.01	0.00	0.00	14714.19	-5917.04

RECEIVED
 Office of Oil and Gas
 FEB 17 2023
 WY Department of
 Environmental Protection



Actual Wellpath Report

Alpine West Unit 1H AWP Proj: 22112'

Page 11 of 12



REFERENCE WELLPATH IDENTIFICATION			
Operator	ANTERO RESOURCES CORPORATION	Well	Alpine West Unit 1H
Field	Tyler	API	47-095-02600-0000
Facility	Sine Pad	Wellbore	Alpine West Unit 1H AWB
Slot	Slot #01		

TARGETS								
Name	TVD [ft]	North [ft]	East [ft]	Grid East [US ft]	Grid North [US ft]	Latitude	Longitude	Shape
Alpine West Unit 1H - POE - Rev-2	6018.00	-109.33	-475.79	1651961.74	14312952.70	39°24'53.1416"N	80°57'32.8428"W	point
Alpine West Unit 1H - BHL - Rev-2	6054.00	14721.71	-5947.19	1646492.54	14327777.78	39°27'19.7425"N	80°58'42.5099"W	point
Alpine West Unit 1H - LP - Rev-2	6054.00	78.71	-597.91	1651839.67	14313140.67	39°24'55.0006"N	80°57'34.3976"W	point

WELLPATH COMPOSITION - Ref Wellbore: Alpine West Unit 1H AWB Ref Wellpath: Alpine West Unit 1H AWP Proj: 22112'					
Start MD [ft]	End MD [ft]	Positional Uncertainty Model	Log Name/Comment	Wellbore	Survey Date
30.00	358.00	Gyrodata 2015 - GC+WIR+DPIPE	01 Gyrodata MS Gyro <17-1/2">(100'-358')	Alpine West Unit 1H AWB	4/17/2020
358.00	2545.00	BH NaviTrak (2019) (Axial)	02 APS EM <12-1/4">(358')(506'-2545')	Alpine West Unit 1H AWB	4/17/2020
2545.00	5120.00	BH NaviTrak (2019) (Axial)	03 APS EM <8-3/4">(2545')(2662'-5120')	Alpine West Unit 1H AWB	4/17/2020
5120.00	22112.00	BH AutoTrak Curve (2019) (Short spacing)	04 BH AT Curve <8-1/2">(5120')(5240'-22087')	Alpine West Unit 1H AWB	4/17/2020

RECEIVED
 Office of Oil and Gas
 FEB 17 2023
 MW Department for
 Environmental Protection



Actual Wellpath Report

Alpine West Unit 1H AWP Proj: 22112'

Page 12 of 12



REFERENCE WELLPATH IDENTIFICATION			
Operator	ANTERO RESOURCES CORPORATION	Well	Alpine West Unit 1H
Field	Tyler	API	47-095-02600-0000
Facility	Sine Pad	Wellbore	Alpine West Unit 1H AWB
Slot	Slot #01		

COMMENTS

Wellpath general comments

API: 47-095-02600-0000

BHI Job #: 110383356B

Rig: H&P 519

Duration: 04/23/2020-06/19/2020

Gyrodata MS Gyro <17-1/2">(100'-358')

APS EM <12-1/4">(358')(506'-2545')

APS EM <8-3/4">(2545')(2662'-5120')

BH AT Curve <8-1/2">(5120')(5240'-22087')

Middlesex: 6048' MD

Burkett: 6232' MD

Marcellus POE: 6314' MD

Projected MD at TD: 22112' MD

RECEIVED
Office of Oil and Gas
FEB 17 2023
WV Department of
Environmental Protection