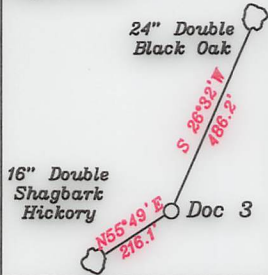


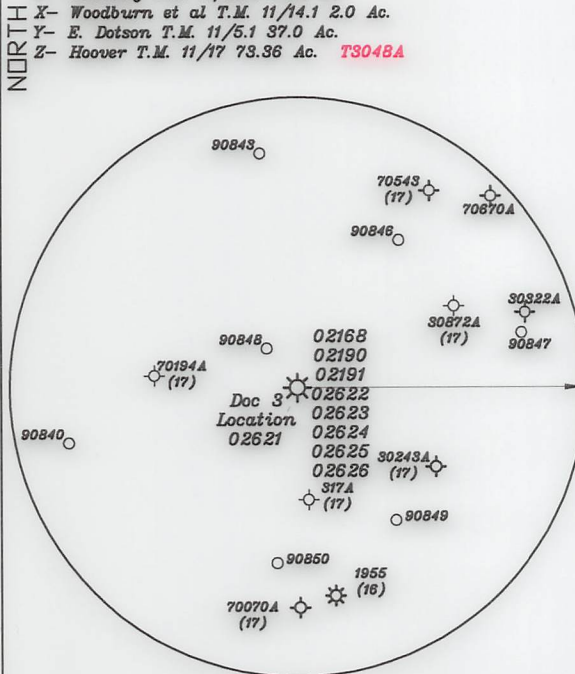
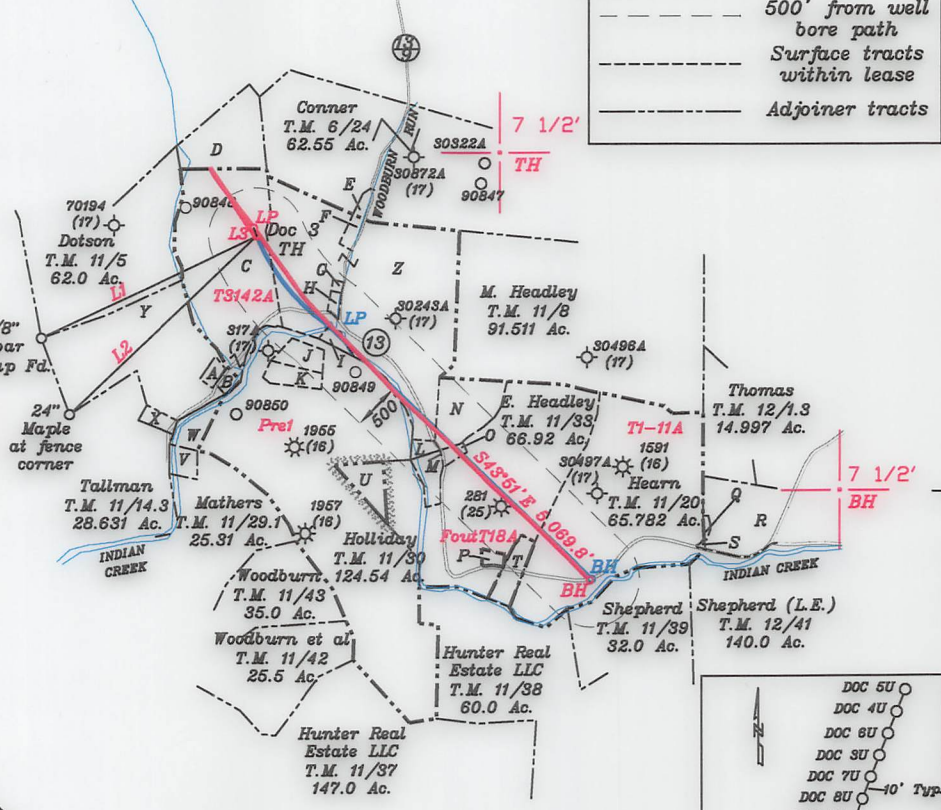
References:



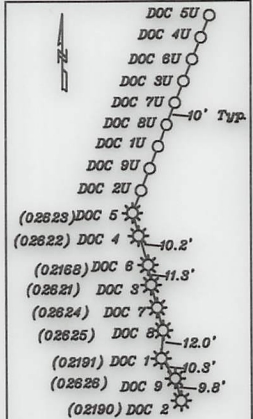
— LEGEND —

	Lease lines
	500' from well bore path
	Surface tracts within lease
	Adjoiner tracts

- A- R. Dotson T.M. 11/5.2 1.0 Ac.
- B- Straight T.M. 11/15 0.88 Ac.
- C- Tennant & Tustin T.M. 11/6 46.51 Ac.
- D- Jay Bee Oil & Gas, Inc T.M. 6/35.1 8.0 Ac.
- E- Fields & Leisure T.M. 11/52 1.25 Ac.
- F- Hoover T.M. 11/17.4 1.12 Ac. **T3048A**
- G- Hoover T.M. 11/17.2 0.25 Ac. **T3048B3**
- H- Lancaster T.M. 11/17.3 0.6 Ac. **T3048B2**
- I- Mt. Zion Cemetery T.M. 11/16 0.88 Ac. **Pre1**
- J- Victory Cemetery Association T.M. 11/30.4 3.76 Ac. **Pre2,3**
- K- Victory Cemetery Association T.M. 11/30.5 2.70 Ac. **Pre2,3**
- L- Wilson & Black T.M. 11/17.1 0.65 Ac. **T3048A3**
- M- Wilson & Black T.M. 11/31 2.4 Ac. **T3048A4**
- N- M. Headley T.M. 11/33.1 9.227 Ac. **FoudT18B**
- O- Eureka T.M. 11/32 0.88 Ac. **FoudT18A**
- P- T. Headley T.M. 11/34 0.78 Ac. **FoudT18A**
- Q- Lancaster T.M. 12/1.1 0.298 Ac.
- R- Thomas T.M. 12/1.2 14.702 Ac.
- S- Thomas T.M. 12/67.1 0.095 Ac.
- T- Lancaster T.M. 11/35 1.32 Ac. **FoudT18A**
- U- Holliday T.M. 11/30.1 12 Ac.
- V- Holliday T.M. 11/30.2 0.56 Ac.
- W- Holliday T.M. 11/30.3 0.52 Ac.
- X- Woodburn et al T.M. 11/14.1 2.0 Ac.
- Y- E. Dotson T.M. 11/5.1 37.0 Ac.
- Z- Hoover T.M. 11/17 73.36 Ac. **T3048A**



Top Hole - TH	
Geo NAD 83-	39.449166 N, 80.768237 W
UTM NAD 83(Meters)-	4366648.56 N, 519941.26 E
UTM NAD 83(Feet)-	14326246.15 N, 1705840.63 E
Landing Point - LP	
Geo NAD 83-	39.449399 N, 80.768953 W
UTM NAD 83(Meters)-	4366674.45 N, 519931.20 E
UTM NAD 83(Feet)-	14326331.09 N, 1705807.62 E
Bottom Hole - BH	
Geo NAD 83-	39.439500 N, 80.755733 W
UTM NAD 83(Meters)-	4365578.73 N, 521020.06 E
UTM NAD 83(Feet)-	14322736.22 N, 1709379.99 E



NUMBER	DIRECTION	DISTANCE
L1	N64°43'E	2,479.8'
L2	N46°31'E	2,684.7'
L3	N20°17'W	91.2'

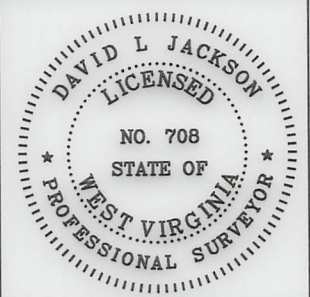
Top Hole - TH	
Geo NAD 83-	39.449166 N, 80.768239 W
UTM NAD 83(Meters)-	4366648.62 N, 519941.10 E
UTM NAD 83(Feet)-	14326246.36 N, 1705840.10 E
Landing Point - LP	
Geo NAD 83-	39.446676 N, 80.765536 W
UTM NAD 83(Meters)-	4366372.88 N, 520174.40 E
UTM NAD 83(Feet)-	14325341.69 N, 1706605.50 E
Bottom Hole - BH	
Geo NAD 83-	39.439531 N, 80.755676 W
UTM NAD 83(Meters)-	4365582.16 N, 521024.93 E
UTM NAD 83(Feet)-	14322747.46 N, 1709395.96 E

(+) DENOTES LOCATION OF WELL ON UNITED STATES TOPOGRAPHIC MAPS

FILE NO. _____
 DRAWING NO. 1
 SCALE 1" = 2000'
 MINIMUM DEGREE OF ACCURACY 1 in 200
 PROVEN SOURCE OF ELEVATION GPS
submeter unit

I THE UNDERSIGNED, HEREBY CERTIFY THAT THIS PLAT IS CORRECT TO THE BEST OF MY KNOWLEDGE AND BELIEF AND SHOWS ALL THE INFORMATION REQUIRED BY LAW AND THE RULES ISSUED AND PRESCRIBED BY THE DEPARTMENT OF ENVIRONMENTAL PROTECTION.

(SIGNED) David L Jackson
 R.P.E. _____ P.S. 708



STATE OF WEST VIRGINIA
 Division of Environmental Protection
 OFFICE OF OIL AND GAS

DATE August 05, 2022
 OPERATOR'S WELL NO. Doc 3
 API WELL NO. _____

WELL TYPE: OIL GAS X LIQUID INJECTION _____ WASTE DISPOSAL _____ STATE COUNTY PERMIT
 (IF "GAS") PRODUCTION X STORAGE _____ DEEP _____ SHALLOW X

LOCATION: ELEVATION 1,039.9' WATER SHED Indian Creek of Outlet Middle Island Creek (HUC-10)
 DISTRICT McElroy COUNTY Tyler
 QUADRANGLE Shirley 7 1/2'

SURFACE OWNER Francis W. Tennant Sr. & Randy W. Tustin ACREAGE 46.51 Ac.
 OIL & GAS ROYALTY OWNER Arnold Schulberg LEASE ACREAGE 46.51 Ac.
 LEASE NO. See Above **03/17/2023**

PROPOSED WORK: DRILL _____ CONVERT _____ DRILL DEEPER _____ REDRILL _____ FRACTURE OR
 STIMULATE _____ PLUG OFF OLD FORMATION _____ PERFORATE NEW
 FORMATION _____ OTHER PHYSICAL CHANGE IN WELL (SPECIFY) As Drilled

PLUG AND ABANDON _____ CLEAN OUT AND REPLUG _____
 TARGET FORMATION Marcellus ESTIMATED DEPTH TVD = 6,829'; TMD = 12,433'
 WELL OPERATOR Jay-Bee Oil & Gas, Inc. DESIGNATED AGENT Deborah Broda-Morgan
 ADDRESS 16 South Ave. W., Ste 118, Cranford NJ 07016 ADDRESS 429 Simonton Rd., Ellenboro, WV 26346