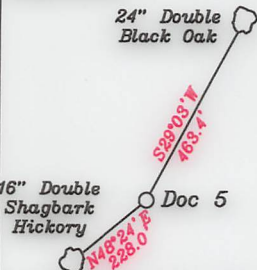
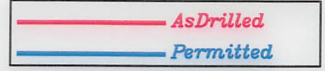


References:

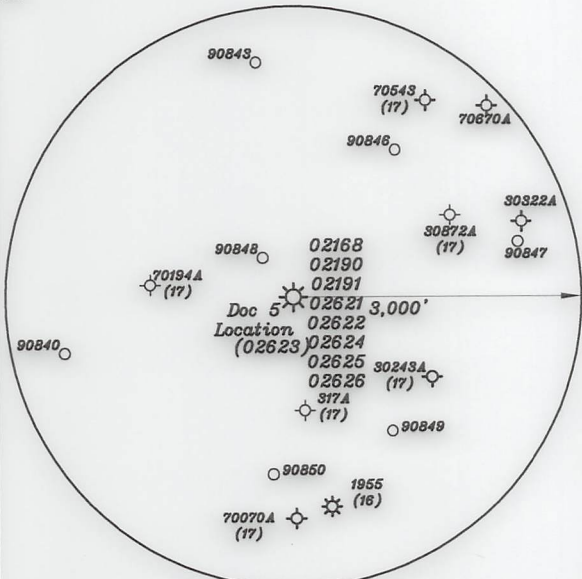
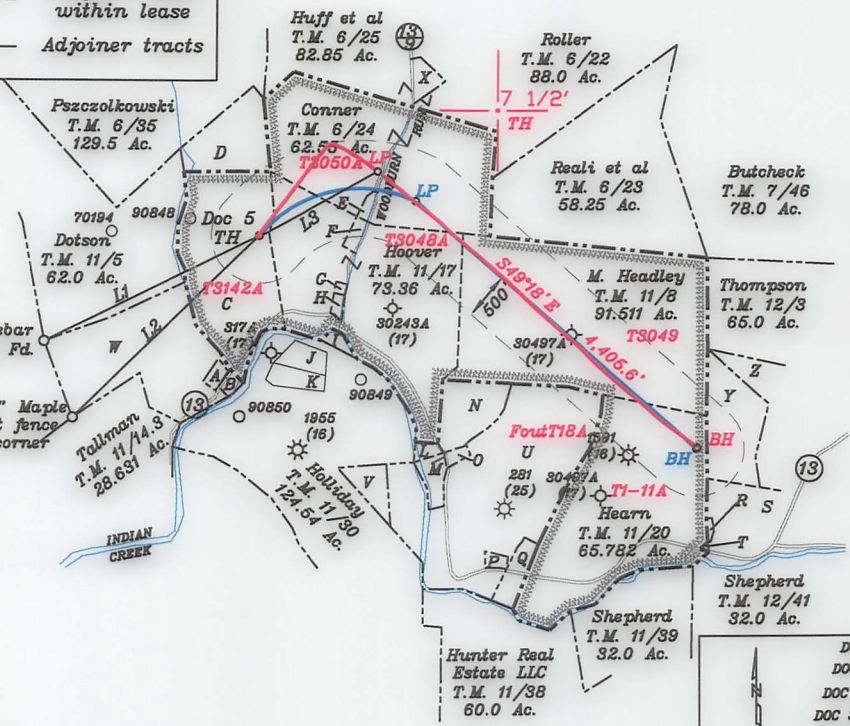


— LEGEND —

—	Lease lines
---	500' from well bore path
---	Surface tracts within lease
---	Adjoiner tracts



- A- R. Dotson T.M. 11/5.2 1.0 Ac.
- B- Straight T.M. 11/15 0.88 Ac.
- C- Tennant & Tustin T.M. 11/6 46.51 Ac.
- D- Jay Bee Oil & Gas, Inc T.M. 6/35.1 8.0 Ac.
- E- Fields & Leisure T.M. 11/52 1.25 Ac. **T3050B**
- F- Hoover T.M. 11/17.4 1.12 Ac. **T3048A**
- G- Hoover T.M. 11/17.2 0.25 Ac. **T3048B3**
- H- Lancaster T.M. 11/17.3 0.6 Ac. **T3048B2**
- I- Mt. Zion Cemetery T.M. 11/16 0.88 Ac.
- J- Victory Cemetery Association T.M. 11/30.4 3.76 Ac.
- K- Victory Cemetery Association T.M. 11/30.5 2.70 Ac.
- L- Wilson & Black T.M. 11/ 17.1 0.65 Ac.
- M- Wilson & Black T.M. 11/31 2.4 Ac.
- N- Headley T.M. 11/33.1 9.227 Ac. **FourT18B**
- O- Eureka T.M. 11/32 0.88 Ac.
- P- T. Headley T.M. 11/34 0.78 Ac.
- Q- Lancaster T.M. 11/35 1.32 Ac.
- R- Lancaster T.M. 12/1.1 0.298 Ac.
- S- Thomas T.M. 12/1.2 14.702 Ac.
- T- Thomas T.M. 12/67.1 0.095 Ac.
- U- E. Headley T.M. 11/33 66.92 Ac.
- V- Holliday T.M. 11/30.1 12.0 Ac.
- W- Dotson T.M. 11/5.1 37.0 Ac.
- X- Yeater et al T.M. 6/25.1 1.1 Ac.
- Y- Thomas T.M. 12/1.3 17.0 Ac.
- Z- Thomas T.M. 12/2 17.0 Ac.

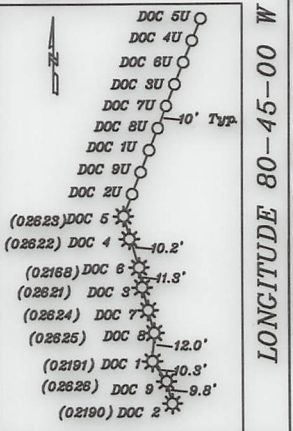


**Top Hole - TH**  
 Geo NAD 83- 39.449248 N, 80.768266 W  
 UTM NAD 83(Meters)-4366657.63 N, 519938.72 E  
 UTM NAD 83(Feet)-14326275.92 N, 1705832.27 E

**Landing Point - LP**  
 Geo NAD 83- 39.451154 N, 80.763950 W  
 UTM NAD 83(Meters)-4366870.12 N, 520309.69 E  
 UTM NAD 83(Feet)-14326973.06 N, 1707049.04 E

**Bottom Hole - BH**  
 Geo NAD 83- 39.443395 N, 80.751981 W  
 UTM NAD 83(Meters)-4366011.83 N, 521341.72 E  
 UTM NAD 83(Feet)-14324157.14 N, 1710435.29 E

NUMBER	DIRECTION	DISTANCE
L1	N64°01'E	2,485.6'
L2	N45°56'E	2,899.7'
L3	N61°09'E	1,402.8'



**Top Hole - TH**  
 Geo NAD 83- 39.449250 N, 80.768268 W  
 UTM NAD 83(Meters)-4366657.86 N, 519938.58 E  
 UTM NAD 83(Feet)-14326276.67 N, 1705831.82 E

**Landing Point - LP**  
 Geo NAD 83- 39.450319 N, 80.762524 W  
 UTM NAD 83(Meters)-4366777.76 N, 520432.47 E  
 UTM NAD 83(Feet)-14326670.02 N, 1707452.19 E

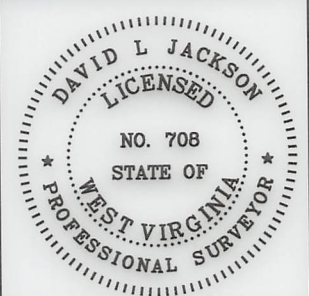
**Bottom Hole - BH**  
 Geo NAD 83- 39.443353 N, 80.752016 W  
 UTM NAD 83(Meters)-4366007.11 N, 521338.71 E  
 UTM NAD 83(Feet)-14324141.67 N, 1710425.41 E

(+) DENOTES LOCATION OF WELL ON UNITED STATES TOPOGRAPHIC MAPS

FILE NO. \_\_\_\_\_  
 DRAWING NO. 1  
 SCALE 1" = 2000'  
 MINIMUM DEGREE OF ACCURACY 1 in 200  
 PROVEN SOURCE OF ELEVATION GPS  
submeter unit

I THE UNDERSIGNED, HEREBY CERTIFY THAT THIS PLAT IS CORRECT TO THE BEST OF MY KNOWLEDGE AND BELIEF AND SHOWS ALL THE INFORMATION REQUIRED BY LAW AND THE RULES ISSUED AND PRESCRIBED BY THE DEPARTMENT OF ENVIRONMENTAL PROTECTION.

(SIGNED) David L Jackson  
 R.P.E. \_\_\_\_\_ P.S. 708



STATE OF WEST VIRGINIA  
 Division of Environmental Protection  
 OFFICE OF OIL AND GAS

DATE August 05, 2022  
 OPERATOR'S WELL NO. Doc 5  
 API WELL NO. \_\_\_\_\_

WELL TYPE: OIL GAS LIQUID INJECTION X WASTE DISPOSAL \_\_\_\_\_  
 (IF "GAS") PRODUCTION X STORAGE \_\_\_\_\_ DEEP \_\_\_\_\_ SHALLOW X

LOCATION: ELEVATION 1,040.1' WATER SHED Indian Creek of Outlet Middle Island Creek (HUC-10)  
 DISTRICT McElroy COUNTY Tyler  
 QUADRANGLE Shirley 7 1/2'

SURFACE OWNER Francis W. Tennant Sr. & Randy W. Tustin ACREAGE 46.51 Ac.  
 OIL & GAS ROYALTY OWNER Arnold Schulberg LEASE ACREAGE 46.51 Ac.  
 LEASE NO. See Above

PROPOSED WORK: DRILL \_\_\_\_\_ CONVERT \_\_\_\_\_ DRILL DEEPER \_\_\_\_\_ REDRILL \_\_\_\_\_ FRACTURE OR STIMULATE \_\_\_\_\_ PLUG OFF OLD FORMATION \_\_\_\_\_ PERFORATE NEW FORMATION \_\_\_\_\_ OTHER PHYSICAL CHANGE IN WELL (SPECIFY) As Drilled

PLUG AND ABANDON \_\_\_\_\_ CLEAN OUT AND REPLUG \_\_\_\_\_  
 TARGET FORMATION Marcellus ESTIMATED DEPTH TVD = 6,800'; TMD = 11,716'  
 WELL OPERATOR Jay-Bee Oil & Gas, Inc. DESIGNATED AGENT Deborah Broda-Morgan  
 ADDRESS 16 South Ave. W., Ste 118, Cranford NJ 07016 ADDRESS 429 Simonton Rd., Ellenboro, WV 26346

03/17/2023