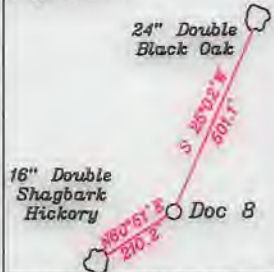


LATITUDE 39-27-30 N
LATITUDE 39-30-00 N

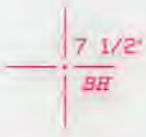
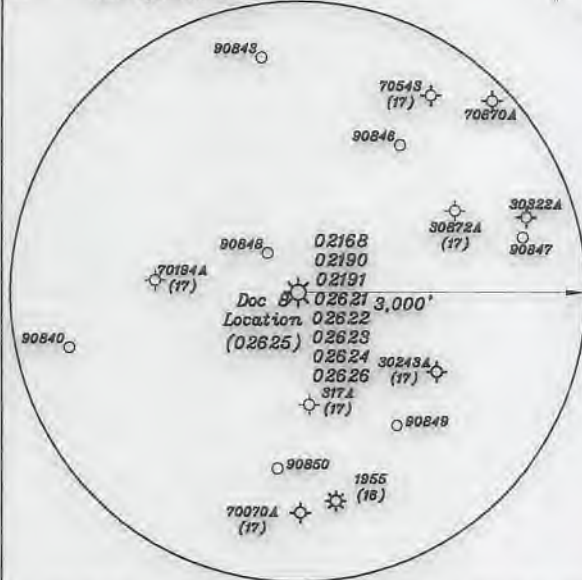
TH 5,144'
BH 8,183'

References:

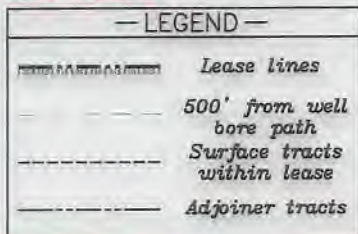
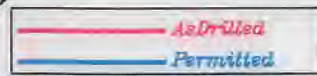


- A- Dotson T.M. 11/5.2 1.0 Ac.
- B- Straight T.M. 11/15 0.88 Ac.
- C- Tennant & Tustin T.M. 11/8 46.51 Ac.
- D- Dotson T.M. 11/5 62.0 Ac.
- E- Jay Bee Oil & Gas, Inc T.M. 6/35.1 8.0 Ac.
- F- Coastal Forest Resources Co. Coastal Timberlands Co. T.M. 6/38 70.0 Ac.
- G- Westbrook T.M. 6/34 10.13 Ac. T3128
- H- A. Warner T.M. 6/10.1 0.368 Ac.
- I- Tallman T.M. 6/33 14.75 Ac.
- J- Fields & Leasure T.M. 11/52 1.25 Ac.
- K- Hoover T.M. 11/17.4 1.12 Ac. T3048A
- L- Hoover T.M. 11/17.2 0.25 Ac. T3048B
- M- Lancaster T.M. 11/17.3 0.8 Ac. T3048C
- N- Mt. Zion Cemetery T.M. 11/16 0.88 Ac.
- O- Headley T.M. 11/8 95.51 Ac.
- P- Headley T.M. 11/33.1 9.227 Ac.
- Q- Wilson & Black T.M. 11/17.1 0.85 Ac.
- R- Dave & Annie Underwood Est. T.M. 11/4 136.0 Ac.
- S- R. Warner T.M. 6/10.2 1.25 Ac.

R- Coastal Forest Resources Co. T.M. 11/4 136 Ac.



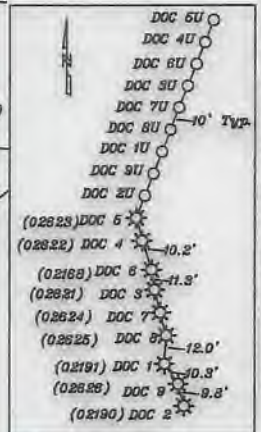
NUMBER	DIRECTION	DISTANCE
L1	N65°10' E	2,478.4'
L2	S04°43' E	2,825.4'
L3	N72°04' W	1,488.8'



Top Hole - TH
Geo NAD 83- 39.449114 N. 80.768216 W
UTM NAD 83(Meters)-4366642.78 N. 519942.93 E
UTM NAD 83(Feet)-14326227.19 N. 1705846.10 E

Landing Point - LP
Geo NAD 83- 39.450301 N. 80.773188 W
UTM NAD 83(Meters)-4366778.19 N. 519514.82 E
UTM NAD 83(Feet)-14326558.03 N. 1704441.88 E

Bottom Hole - BH
Geo NAD 83- 39.483797 N. 80.778894 W
UTM NAD 83(Meters)-4368270.02 N. 519011.71 E
UTM NAD 83(Feet)-14331585.89 N. 1702790.31 E



Top Hole - TH
Geo NAD 83- 39.449113 N. 80.768220 W
UTM NAD 83(Meters)-4366642.75 N. 519942.71 E
UTM NAD 83(Feet)-14326227.08 N. 1705845.36 E

Landing Point - LP
Geo NAD 83- 39.450061 N. 80.773119 W
UTM NAD 83(Meters)-4366746.78 N. 519521.00 E
UTM NAD 83(Feet)-14326558.39 N. 1704461.80 E

Bottom Hole - BH
Geo NAD 83- 39.483761 N. 80.779050 W
UTM NAD 83(Meters)-4368285.97 N. 519006.97 E
UTM NAD 83(Feet)-14331552.59 N. 1702776.36 E

(+) DENOTES LOCATION OF WELL ON UNITED STATES TOPOGRAPHIC MAPS

FILE NO. _____
DRAWING NO. 1
SCALE 1" = 2000'
MINIMUM DEGREE OF ACCURACY 1 in 200
PROVEN SOURCE OF ELEVATION GPS
submeter unit

I THE UNDERSIGNED, HEREBY CERTIFY THAT THIS PLAT IS CORRECT TO THE BEST OF MY KNOWLEDGE AND BELIEF AND SHOWS ALL THE INFORMATION REQUIRED BY LAW AND THE RULES ISSUED AND PRESCRIBED BY THE DEPARTMENT OF ENVIRONMENTAL PROTECTION.

(SIGNED) David L Jackson
R.P.E. _____ P.S. 708



STATE OF WEST VIRGINIA
Division of Environmental Protection
OFFICE OF OIL AND GAS

DATE August 05, 2022
OPERATOR'S WELL NO. Doc 8
API WELL NO. _____

WELL TYPE: OIL GAS LIQUID INJECTION WASTE DISPOSAL STATE 47 COUNTY 095 PERMIT 02625
(IF "GAS") PRODUCTION X STORAGE DEEP SHALLOW X

LOCATION: ELEVATION 1,039.8' WATER SHED Indian Creek of Outlet Middle Island Creek (HUC-10)
DISTRICT McElroy COUNTY Tyler
QUADRANGLE Shirley 7 1/2'

SURFACE OWNER Francis W. Tennant Sr. & Randy W. Tustin ACREAGE 46.51 Ac.
OIL & GAS ROYALTY OWNER Arnold Schulberg LEASE ACREAGE 46.51 Ac.
LEASE NO. See Above

PROPOSED WORK: DRILL CONVERT DRILL DEEPER REDRILL FRACTURE OR STIMULATE PLUG OFF OLD FORMATION PERFORATE NEW FORMATION OTHER PHYSICAL CHANGE IN WELL (SPECIFY) As Drilled

PLUG AND ABANDON CLEAN OUT AND REPLUG
TARGET FORMATION Marcellus ESTIMATED DEPTH TVD = 6,777'; TMD = 12,493'
WELL OPERATOR Jay-Bee Oil & Gas, Inc. DESIGNATED AGENT Deborah Broda-Morgan
ADDRESS 16 South Ave. W., Ste 118, Cranford NJ 07016 ADDRESS 429 Simonton Rd., Ellenboro, WV 26346

03/17/2023