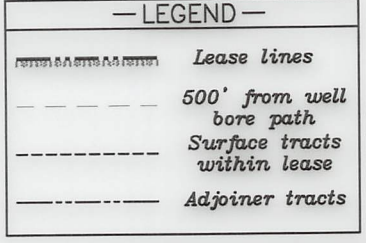
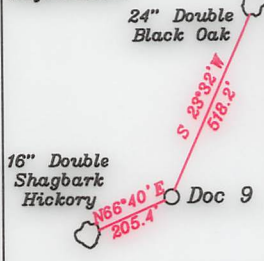
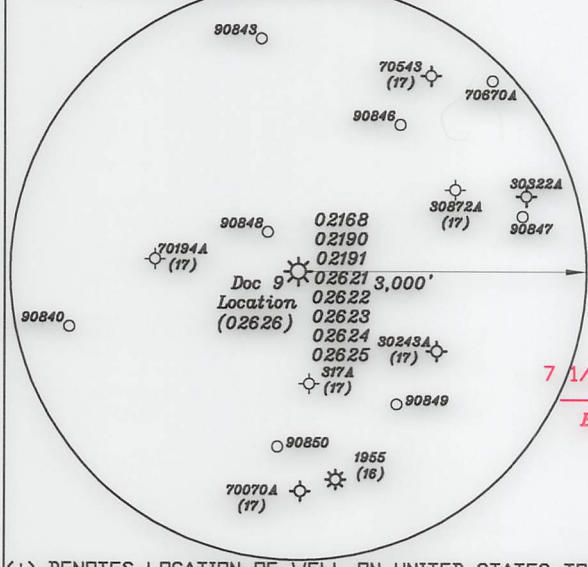
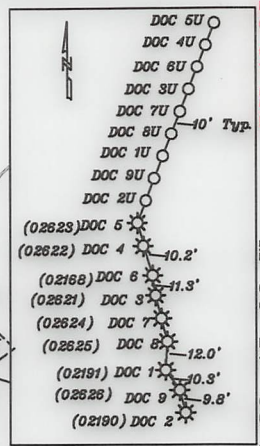
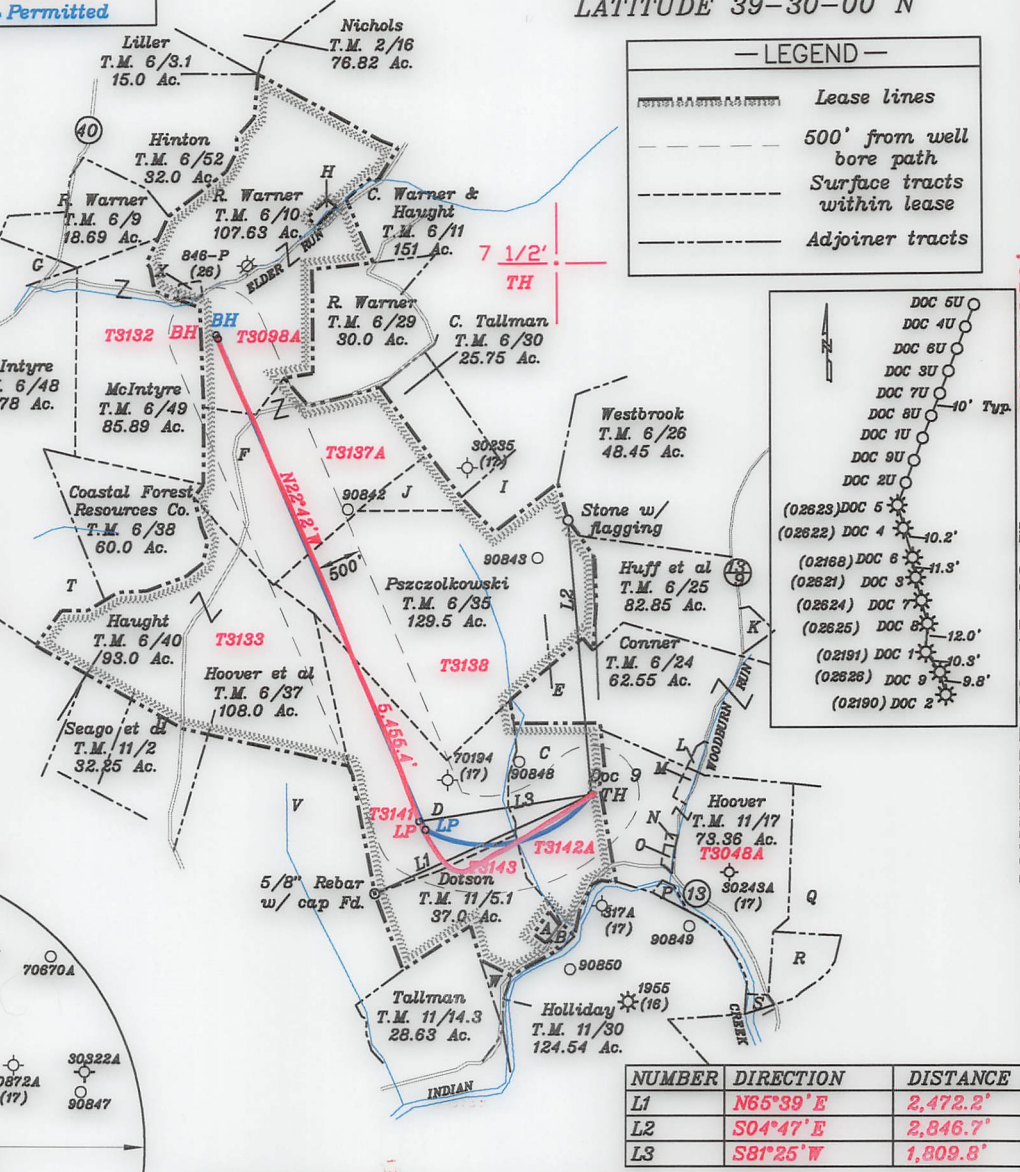


References:



- A- R. Dotson T.M. 11/5.2 1.0 Ac.
- B- Straight T.M. 11/15 0.88 Ac.
- C- Tennant & Tustin T.M. 11/6 46.51 Ac.
- D- Dotson T.M. 11/5 62.0 Ac.
- E- Jay Bee Oil & Gas, Inc. T.M. 6/35.1 8.0 Ac.
- F- Coastal Forest Resources Co. Coastal Timberlands Co. T.M. 6/36 70.0 Ac.
- G- Big Run Methodist Church T.M. 6/51 2.0 Ac.
- H- R. Warner T.M. 6/10.1 0.388 Ac.
- I- Tallman T.M. 6/33 14.75 Ac.
- J- Westbrook T.M. 6/34 10.13 Ac. **T3138**
- K- Yeater et al T.M. 6/25.1 1.1 Ac.
- L- Fields & Leasure T.M. 11/52 1.25 Ac.
- M- Hoover T.M. 11/17.4 1.12 Ac. **T3048A**
- N- Hoover T.M. 11/17.2 0.25 Ac. **T3048B3**
- O- Lancaster T.M. 11/17.3 0.6 Ac. **T3048B2**
- P- Mt. Zion Cemetery T.M. 11/16 0.88 Ac.
- Q- Headley T.M. 11/8 95.511 Ac.
- R- Headley T.M. 11/33.1 9.227 Ac.
- S- Wilson & Black T.M. 11/17.1 0.65 Ac.
- T- Coastal Forest Resources Co. Coastal Timberlands Co. T.M. 6/39 23.0 Ac.
- U- Coastal Forest Resources Co. T.M. 11/3 119 Ac.
- V- Dave & Annie Underwood Estates. T.M. 11/4 136 Ac.
- W- Woodburn T.M. 11/14.1 2.0 Ac.
- X- R. Warner T.M. 6/10.2 1.25 Ac. **T3098B**



NUMBER	DIRECTION	DISTANCE
L1	N65°39'E	2,472.2'
L2	S04°47'E	2,846.7'
L3	S81°25'W	1,809.8'

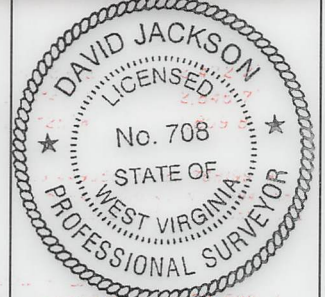
Point	Geo NAD 83	UTM NAD 83 (Meters)	UTM NAD 83 (Feet)
Top Hole - TH	39.449058 N. 80.768201 W	4366636.54 N. 519944.41 E	14326206.71 N. 1705850.95 E
Landing Point - LP	39.448009 N. 80.774305 W	4366658.88 N. 519419.51 E	14325820.70 N. 1704128.85 E
Bottom Hole - BH	39.461972 N. 80.782210 W	4368066.82 N. 518735.60 E	14330899.24 N. 1701885.06 E

(+) DENOTES LOCATION OF WELL ON UNITED STATES TOPOGRAPHIC MAPS

FILE NO. _____
 DRAWING NO. 1
 SCALE 1" = 2000'
 MINIMUM DEGREE OF ACCURACY 1 in 200
 PROVEN SOURCE OF ELEVATION GPS
submeter unit

I THE UNDERSIGNED, HEREBY CERTIFY THAT THIS PLAT IS CORRECT TO THE BEST OF MY KNOWLEDGE AND BELIEF AND SHOWS ALL THE INFORMATION REQUIRED BY LAW AND THE RULES ISSUED AND PRESCRIBED BY THE DEPARTMENT OF ENVIRONMENTAL PROTECTION.

(SIGNED) David L Jackson
 R.P.E. _____ P.S. 708



STATE OF WEST VIRGINIA
 Division of Environmental Protection
 OFFICE OF OIL AND GAS

DATE August 05, 2022
 OPERATOR'S WELL NO. Doc 9
 API WELL NO. 47-095-02626

WELL TYPE: OIL X GAS LIQUID INJECTION WASTE DISPOSAL STATE COUNTY PERMIT
 (IF "GAS") PRODUCTION X STORAGE DEEP SHALLOW X

LOCATION: ELEVATION 1,039.7' WATER SHED Indian Creek of Outlet Middle Island Creek (HUC-10)
 DISTRICT McElroy COUNTY Tyler
 QUADRANGLE Shirley 7 1/2'

SURFACE OWNER Francis W. Tennant Sr. & Randy W. Tustin ACREAGE 46.51 Ac.
 OIL & GAS ROYALTY OWNER Arnold Schulberg LEASE ACREAGE 46.51 Ac.
 LEASE NO. See Above

PROPOSED WORK: DRILL X CONVERT X DRILL DEEPER X REDRILL X FRACTURE OR STIMULATE X PLUG OFF OLD FORMATION X PERFORATE NEW FORMATION X OTHER PHYSICAL CHANGE IN WELL (SPECIFY) As Drilled

PLUG AND ABANDON X CLEAN OUT AND REPLUG _____
 TARGET FORMATION Marcellus ESTIMATED DEPTH TVD = 6,769'; TMD = 12,948'
 WELL OPERATOR Jay-Bee Oil & Gas, Inc. DESIGNATED AGENT Deborah Broda-Morgan
 ADDRESS 16 South Ave. W., Ste 118, Cranford NJ 07016 ADDRESS 429 Simonton Rd., Ellenboro, WV 26346

05/17/2023