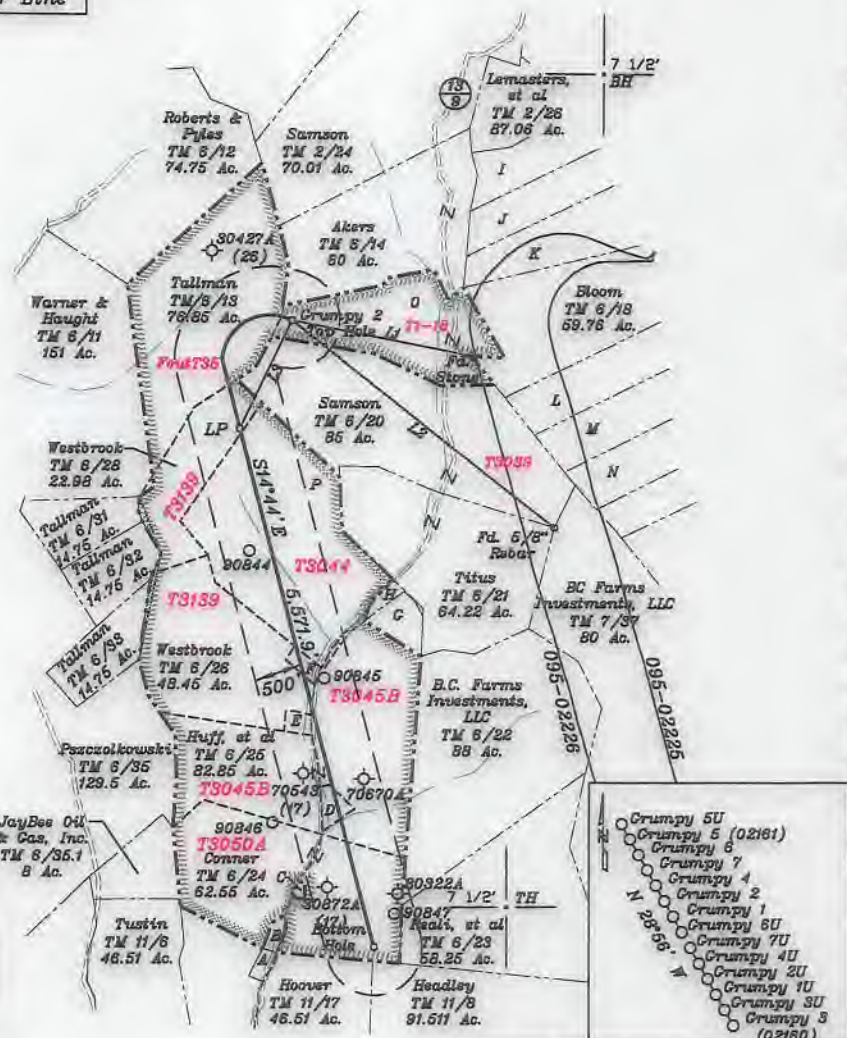
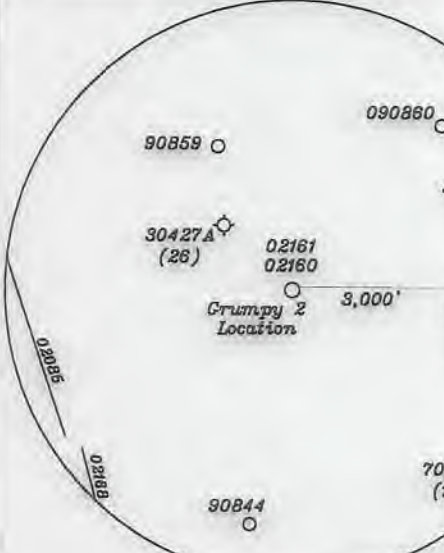


- A- McIntyre, et al TM 11/17.4 1.12 Ac.
- B- Fields & Leasure TM 11/52 1.25 Ac.
- C- Clark TM 6/24.1 0.20 Ac. T3050A
- D- Yeater, et al TM 6/25.1 1.1 Ac. T3045B
- E- Stafford TM 6/26.2 1.331 Ac. T3139
- F- Akers TM 6/26.1 0.22 Ac. T3139
- G- Titus TM 6/25.3 4.83 Ac.
- H- Titus TM 6/25.2 1.08 Ac.
- I- Edgar Ronald McHenry Trust TM 6/15 15.81 Ac.
- J- Rayburn, Hrs. TM 6/16 15.82 Ac.
- K- Thompson TM 6/17 26.36 Ac.
- L- Eidle TM 7/17 23.73 Ac.
- M- Eidle TM 7/18 26.36 Ac.
- N- BC Farms Investments, LLC TM 7/19 22.85 Ac.
- O- Samson T.M. 6/19 42.0 Ac.
- P- A.M. & Solomon, Kyle Estates TM 6/27 80 Ac.



NUMBER	DIRECTION	DISTANCE
L1	S79°18'E	1,908.5'
L2	S52°00'E	3,487.9'
L3	S25°25'W	1,245.1'



Note: All wells within 500' of the horizontal leg are shown on this plat based upon information taken from DEP mapping, well plats & aerial photos.

Top Hole—TH  
 Geo NAD 83— 39.467651 N, 80.764166 W  
 UTM NAD 83(Meters)—4368700.94 N, 520286.20 E  
 UTM NAD 83(Feet)—14332979.67 N, 1706972.30 E

Landing Point—LP  
 Geo NAD 83— 39.464543 N, 80.766002 W  
 UTM NAD 83(Meters)—4368355.61 N, 520129.14 E  
 UTM NAD 83(Feet)—14331846.70 N, 1706457.03 E

Bottom Hole—BH  
 Geo NAD 83— 39.449805 N, 80.760714 W  
 UTM NAD 83(Meters)—4366721.16 N, 520588.41 E  
 UTM NAD 83(Feet)—14326484.98 N, 1707963.90 E

(+) DENOTES LOCATION OF WELL ON UNITED STATES TOPOGRAPHIC MAPS

FILE NO. \_\_\_\_\_  
 DRAWING NO. 1  
 SCALE 1" = 2000'  
 MINIMUM DEGREE OF ACCURACY 1 in 200  
 PROVEN SOURCE OF ELEVATION GPS  
submeter unit

I THE UNDERSIGNED, HEREBY CERTIFY THAT THIS PLAT IS CORRECT TO THE BEST OF MY KNOWLEDGE AND BELIEF AND SHOWS ALL THE INFORMATION REQUIRED BY LAW AND THE RULES ISSUED AND PRESCRIBED BY THE DEPARTMENT OF ENVIRONMENTAL PROTECTION.

(SIGNED) David S. Jackson  
 R.P.E. \_\_\_\_\_ P.S. 708



STATE OF WEST VIRGINIA  
 Division of Environmental Protection  
 OFFICE OF OIL AND GAS

DATE April 16, 2019  
 OPERATOR'S WELL NO. Grumpy 2  
 API WELL NO. \_\_\_\_\_

WELL TYPE: OIL GAS LIQUID INJECTION \_\_\_\_\_ WASTE DISPOSAL \_\_\_\_\_  
 (IF "GAS") PRODUCTION X STORAGE \_\_\_\_\_ DEEP \_\_\_\_\_ SHALLOW X

LOCATION: ELEVATION 1,299.2' WATER SHED Woodburn Run of Outlet Middle Island Creek (HUC-10)  
 DISTRICT McElroy COUNTY Tyler  
 QUADRANGLE Shirley 7 1/2'

SURFACE OWNER Diana Samson ACREAGE 42.0 Ac.  
 OIL & GAS ROYALTY OWNER Diana Samson LEASE ACREAGE 42.0 Ac.  
 LEASE NO. See above

PROPOSED WORK: DRILL X CONVERT \_\_\_\_\_ DRILL DEEPER \_\_\_\_\_ REDRILL \_\_\_\_\_ FRACTURE DR \_\_\_\_\_  
 STIMULATE X PLUG OFF OLD FORMATION \_\_\_\_\_ PERFORATE NEW FORMATION \_\_\_\_\_ OTHER PHYSICAL CHANGE IN WELL (SPECIFY) \_\_\_\_\_

PLUG AND ABANDON \_\_\_\_\_ CLEAN OUT AND REPLUG \_\_\_\_\_  
 TARGET FORMATION Marcellus ESTIMATED DEPTH TVD = 7,075'; TMD = 14,392'  
 WELL OPERATOR Jay-Bee Oil & Gas, Inc. DESIGNATED AGENT Randy Broda  
 ADDRESS 1720 Route 22 E, Union, NJ 07083 ADDRESS 3570 Shields Hill Rd., Cairo, WV 26337

LONGITUDE 80-45-00 W Bottom Hole 3,107' Top Hole 11,783'

LONGITUDE 80-45-00 W