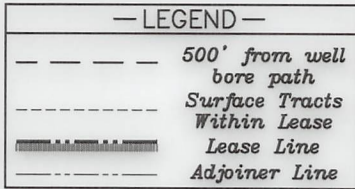
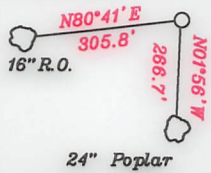


References:

Crumpy 2

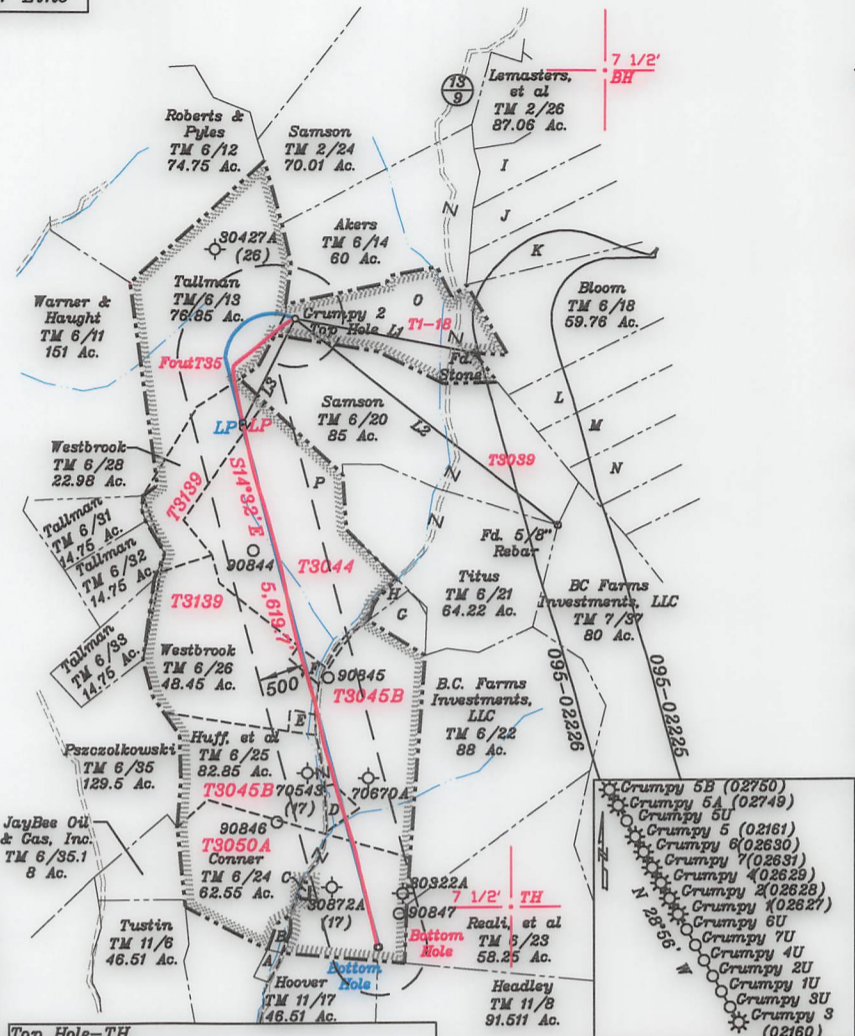
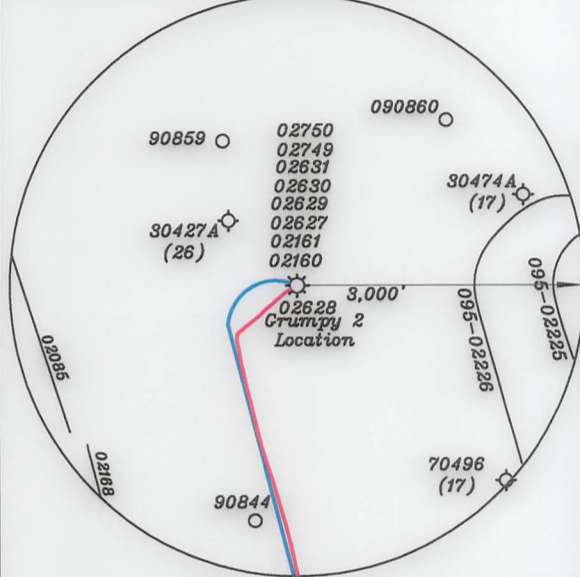


- A- McIntyre, et al TM 11/17.4 1.12 Ac.
B- Fields & Leisure TM 11/52 1.25 Ac.
C- Clark TM 6/24.1 0.20 Ac. T3050A
D- Yeater, et al TM 6/25.1 1.1 Ac. T3045B
E- Stafford TM 6/26.2 1.331 Ac. T3139
F- Akers TM 6/26.1 0.22 Ac. T3139
G- Titus TM 6/25.3 4.83 Ac.
H- Titus TM 6/25.2 1.08 Ac.
I- Edgar Ronald McHenry Trust TM 6/15 15.81 Ac.
J- Rayburn, Hrs. TM 6/16 15.82 Ac.
K- Thompson TM 6/17 26.36 Ac.
L- Eidle TM 7/17 23.73 Ac.
M- Eidle TM 7/18 26.36 Ac.
N- BC Farms Investments, LLC TM 7/19 22.85 Ac.
O- Samson T.M. 6/19 42.0 Ac.
P- A.M. & Solomon Kyle Estates TM 6/27 80 Ac.

Note: All wells within 500' of the horizontal leg are shown on this plat based upon information taken from DEP mapping, well plats & aerial photos.

Table with 3 columns: NUMBER, DIRECTION, DISTANCE. Contains data for L1, L2, and L3.

NORTH



Top Hole-TH
Geo NAD 83- 39.467651 N, 80.764166 W
UTM NAD 83(Meters)-4368700.94 N, 520286.20 E
UTM NAD 83(Feet)-14332979.67 N, 1706972.30 E
Landing Point-LP
Geo NAD 83- 39.464543 N, 80.766002 W
UTM NAD 83(Meters)-4368355.61 N, 520129.14 E
UTM NAD 83(Feet)-14331846.70 N, 1706457.03 E
Bottom Hole-BH
Geo NAD 83- 39.449805 N, 80.760714 W
UTM NAD 83(Meters)-4366721.16 N, 520588.41 E
UTM NAD 83(Feet)-14326484.33 N, 1707963.80 E

Top Hole-TH
Geo NAD 83- 39.467652 N, 80.764167 W
UTM NAD 83(Meters)-4368701.01 N, 520286.08 E
UTM NAD 83(Feet)-14332979.90 N, 1706971.92 E
Landing Point-LP
Geo NAD 83- 39.464680 N, 80.766017 W
UTM NAD 83(Meters)-4368370.86 N, 520127.84 E
UTM NAD 83(Feet)-14331896.71 N, 1706452.74 E
Bottom Hole-BH
Geo NAD 83- 39.449801 N, 80.760754 W
UTM NAD 83(Meters)-4366720.68 N, 520584.94 E
UTM NAD 83(Feet)-14326482.76 N, 1707952.44 E

(+) DENOTES LOCATION OF WELL ON UNITED STATES TOPOGRAPHIC MAPS

FILE NO.
DRAWING NO. 1
SCALE 1" = 2000'
MINIMUM DEGREE OF ACCURACY 1 in 200
PROVEN SOURCE OF ELEVATION GPS
submeter unit

I THE UNDERSIGNED, HEREBY CERTIFY THAT THIS PLAT IS CORRECT TO THE BEST OF MY KNOWLEDGE AND BELIEF AND SHOWS ALL THE INFORMATION REQUIRED BY LAW AND THE RULES ISSUED AND PRESCRIBED BY THE DEPARTMENT OF ENVIRONMENTAL PROTECTION.

(SIGNED) David L Jackson
R.P.E. P.S. 708



STATE OF WEST VIRGINIA
Division of Environmental Protection
OFFICE OF OIL AND GAS
DATE June 15, 2022
OPERATOR'S WELL NO. Crumpy 2
API WELL NO. 47-095-02628
WELL TYPE: OIL GAS X LIQUID INJECTION WASTE DISPOSAL STATE COUNTY PERMIT
LOCATION: ELEVATION 1,299.3' WATER SHED Woodburn Run of Outlet Middle Island Creek (HUC-10)
DISTRICT McElroy COUNTY Tyler
SURFACE OWNER Diana Samson ACREAGE 42.0 Ac.
OIL & GAS ROYALTY OWNER Diana Samson LEASE ACREAGE 42.0 Ac.
LEASE NO. See above
PROPOSED WORK: DRILL CONVERT DRILL DEEPER REDRILL FRACTURE OR STIMULATE PLUG OFF OLD FORMATION PERFORATE NEW FORMATION OTHER PHYSICAL CHANGE IN WELL (SPECIFY) As Drilled
PLUG AND ABANDON CLEAN OUT AND REPLUG
TARGET FORMATION Marcellus ESTIMATED DEPTH TVD = 7,065'; TMD = 13,097'
WELL OPERATOR Jay-Bee Oil & Gas, Inc. DESIGNATED AGENT Deborah Broda-Morgan
ADDRESS 16 South Avenue W, Ste 118, Cranford NJ 07016 ADDRESS 429 Simonton Road, Ellenboro WV 26346

LONGITUDE 80-45-00 W Bottom Hole 3,108'
LONGITUDE 80-45-00 W Bottom Hole 11,783'

03/17/2023