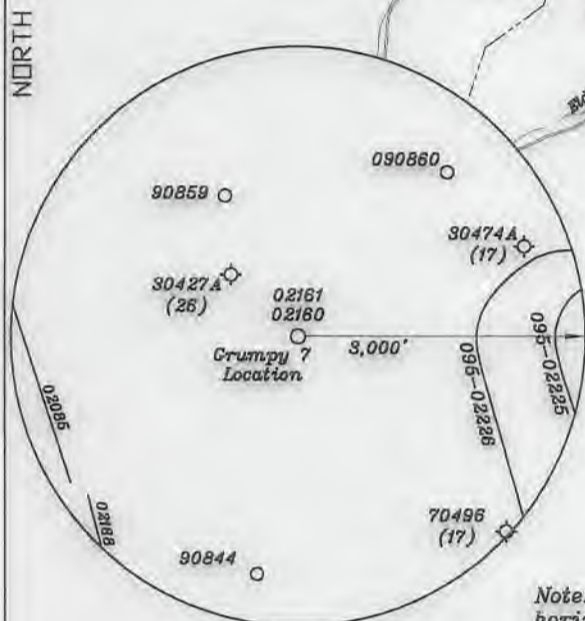
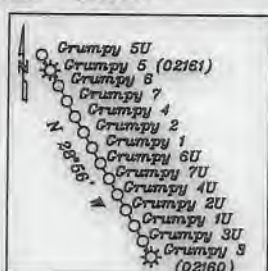
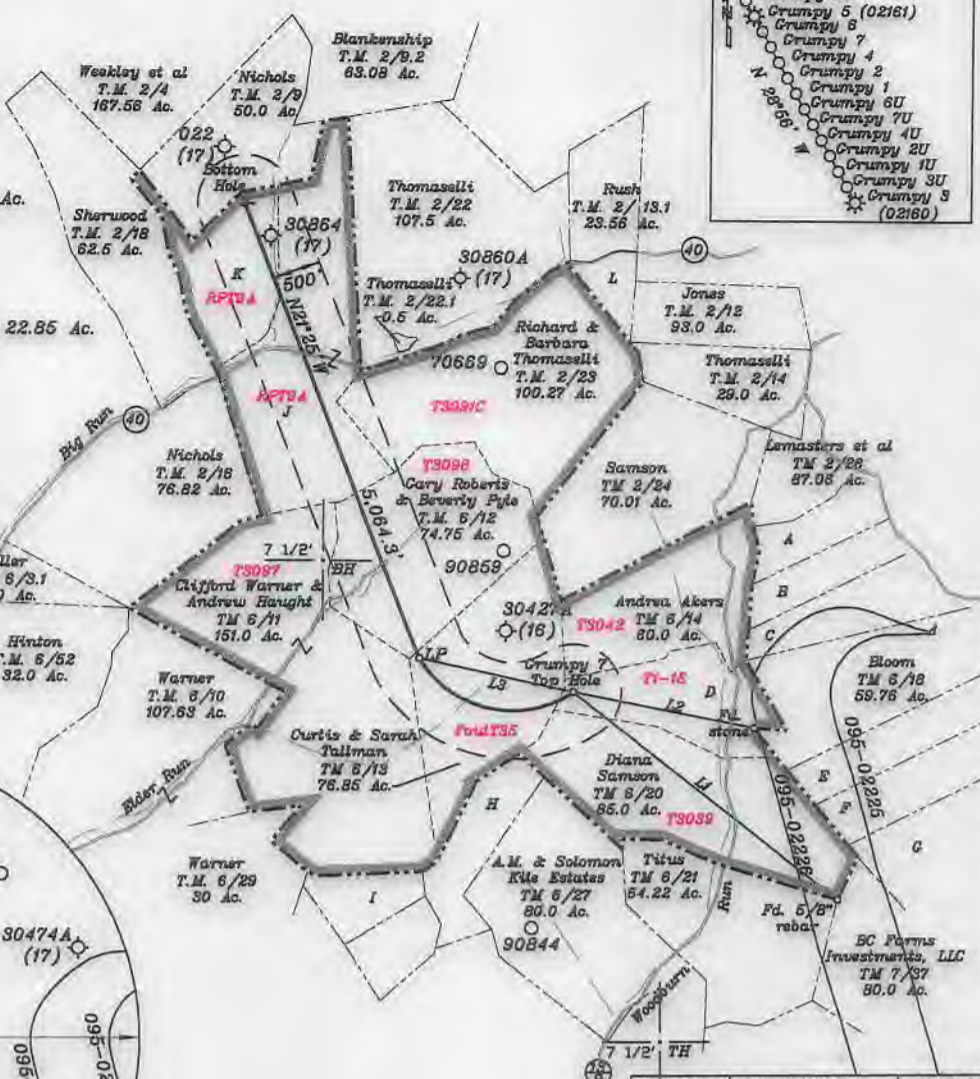
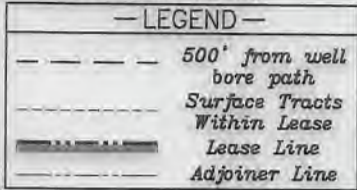


- A- Edgar McHenry Trust TM 6/15 15.81 Ac.
- B- Rayburn Heirs TM 6/16 15.82 Ac.
- C- Thompson TM 6/17 26.36 Ac.
- D- Diana Samson TM 6/19 42.0 Ac.
- E- Eidle TM 7/17 23.73 Ac.
- F- Eidle TM 7/18 26.36 Ac.
- G- BC Farms Investments, LLC TM 7/19 22.85 Ac.
- H- Westbrook TM 6/28 22.98 Ac.
- I- Tallman TM 6/31 14.75 Ac.
- J- Charles Hagan TM 2/21 91.587 Ac.
- K- Eldon Nichols TM 2/20 35.68 Ac.
- L- Rush TM 2/13 8.88 Ac.



NUMBER	DIRECTION	DISTANCE
L1	N51°51'W	3,505.7'
L2	N78°49'W	1,920.3'
L3	N77°46'W	1,644.9'

Top Hole—TH
 Geo NAD 83— 39.467700 N, 80.764197 W
 UTM NAD 83(Meters)—4368706.42 N, 520583.53 E
 UTM NAD 83(Feet)—14332997.64 N, 1706963.54 E

Landing Point—LP
 Geo NAD 83— 39.468595 N, 80.789908 W
 UTM NAD 83(Meters)—4368804.47 N, 519792.01 E
 UTM NAD 83(Feet)—14333319.33 N, 1705350.96 E

Bottom Hole—BH
 Geo NAD 83— 39.481467 N, 80.776693 W
 UTM NAD 83(Meters)—4370231.45 N, 519204.84 E
 UTM NAD 83(Feet)—14338001.02 N, 1703424.56 E

Note: All wells within 500' of the horizontal leg are shown on this plat based upon information taken from DEP mapping, well plats & aerial photos.

(+) DENOTES LOCATION OF WELL ON UNITED STATES TOPOGRAPHIC MAPS

FILE NO. _____
 DRAWING NO. 1
 SCALE 1" = 2000'
 MINIMUM DEGREE OF ACCURACY 1 in 200
 PROVEN SOURCE OF ELEVATION GPS
submeter unit

I THE UNDERSIGNED, HEREBY CERTIFY THAT THIS PLAT IS CORRECT TO THE BEST OF MY KNOWLEDGE AND BELIEF AND SHOWS ALL THE INFORMATION REQUIRED BY LAW AND THE RULES ISSUED AND PRESCRIBED BY THE DEPARTMENT OF ENVIRONMENTAL PROTECTION.

(SIGNED) David L. Jackson
 R.P.E. _____ P.S. 708



STATE OF WEST VIRGINIA
 Division of Environmental Protection
 OFFICE OF OIL AND GAS

DATE May 13, 2019
 OPERATOR'S WELL NO. Crumpy 7
 API WELL NO. _____

WELL TYPE: OIL GAS LIQUID INJECTION _____ WASTE DISPOSAL _____ STATE 47 COUNTY 095 PERMIT 0263146A

(IF 'GAS') PRODUCTION STORAGE _____ DEEP _____ SHALLOW

LOCATION: ELEVATION 1,299.2' WATER SHED Woodburn Run of Outlet Middle Island Creek (HUC-10)
 DISTRICT McElroy COUNTY Tyler
 QUADRANGLE Shirley 7 1/2'

SURFACE OWNER Diana Samson ACREAGE 42.0 Ac.
 OIL & GAS ROYALTY OWNER Diana Samson LEASE ACREAGE 42.0 Ac.
 LEASE NO. See above

PROPOSED WORK: DRILL CONVERT _____ DRILL DEEPER _____ REDRILL _____ FRACTURE OR STIMULATE PLUG OFF OLD FORMATION _____ PERFORATE NEW FORMATION _____ OTHER PHYSICAL CHANGE IN WELL (SPECIFY) _____

PLUG AND ABANDON _____ CLEAN OUT AND REPLUG _____
 TARGET FORMATION Marcellus ESTIMATED DEPTH TVD = 7,075'; TMD = 14,284'
 WELL OPERATOR Jay-Bee Oil & Gas, Inc. DESIGNATED AGENT Randy Broda
 ADDRESS 1720 Route 22 E, Union, NJ 07083 ADDRESS 3570 Shields Hill Rd., Cairo, WV 26337

LONGITUDE 80-45-00 W Bottom Hole 6,751'
 LONGITUDE 80-45-00 W Top Hole 11,765'