



ANTERO RESOURCES CORPORATION

Location: Tyler County, WV
 Field: Tyler
 Facility: Colorado West Pad

Slot: Slot #01
 Well: Nuggets Unit 1H
 Wellbore: Nuggets Unit 1H PWB



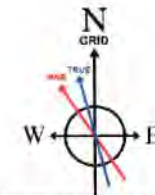
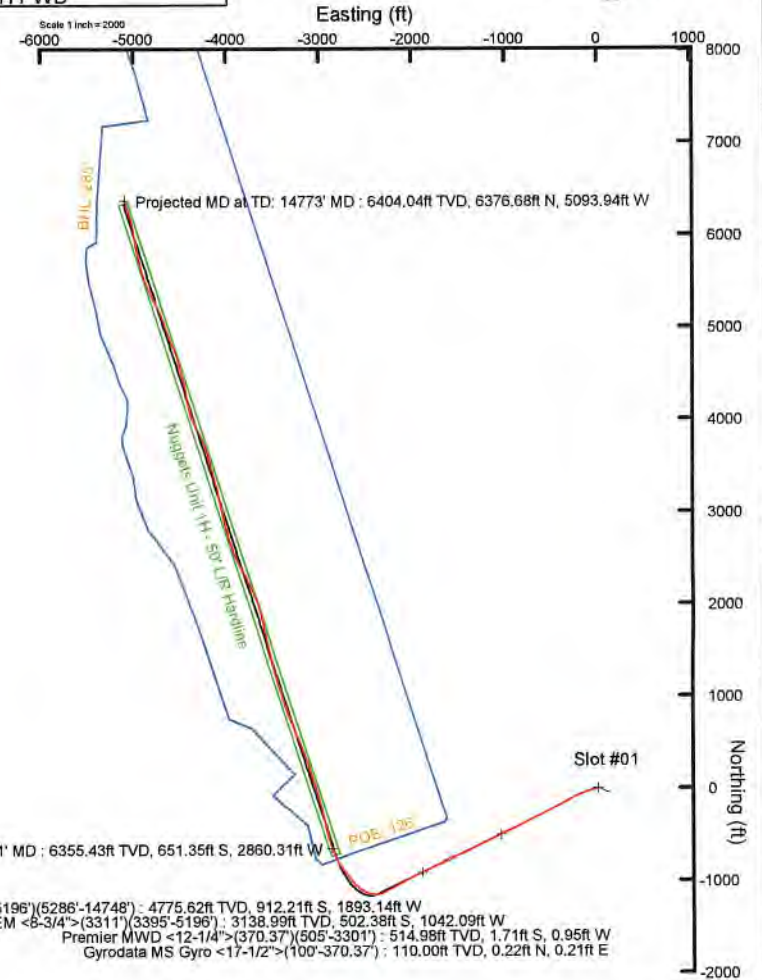
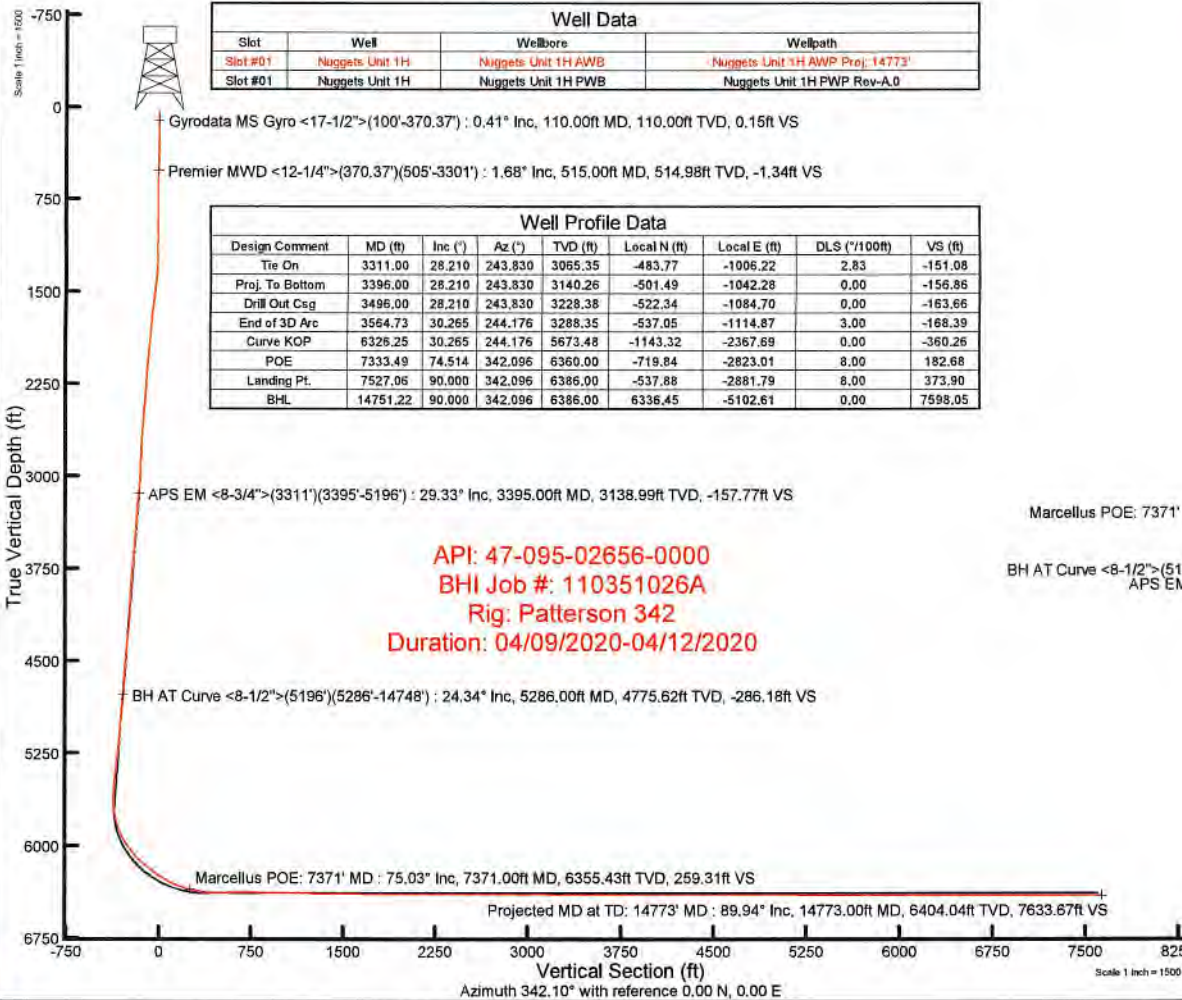
Plot reference wellpath is Nuggets Unit 1H PWP Rev-A.0	Grid System: NAD27 / UTM Zone 17 North, US feet
True vertical depths are referenced to Patterson 342 (RKB)	North Reference: Grid north
Reference wellpath measurement depths are referenced to Patterson 342 (RKB)	Scale: True distance
Patterson 342 (RKB) to Mean Sea Level: 773.5 feet	Coordinates are in feet referenced to Slot
Mean Sea Level to Ground level (At Slot: Slot #01): -748.5 feet	Depths are in feet
Official wellpath MDs are referenced to each path's detailed MD datum	Created by: dataset on 2020-04-20; Database: WA_MPL_EasternUS_Data

Location Information						
Facility Name		Grid East (US ft)	Grid North (US ft)	Latitude	Longitude	
Colorado West Pad		1699843.950	14308473.940	39°24'8.1990"N	80°47'22.6560"W	
Slot	Local N (ft)	Local E (ft)	Grid East (US ft)	Grid North (US ft)	Latitude	Longitude
Slot #01	27.05	-59.53	1699774.050	14308500.980	39°24'8.4680"N	80°47'23.5460"W
Patterson 342 (RKB) to Ground level (At Slot: Slot #01)				25ft		
Mean Sea Level to Ground level (At Slot: Slot #01)				-748.5ft		
Patterson 342 (RKB) to Mean Sea Level				773.5ft		

Well Data			
Slot	Well	Wellbore	Wellpath
Slot #01	Nuggets Unit 1H	Nuggets Unit 1H AWB	Nuggets Unit 1H AWP Proj; 14773'
Slot #01	Nuggets Unit 1H	Nuggets Unit 1H PWB	Nuggets Unit 1H PWP Rev-A.0

Gyrodatta MS Gyro <17-1/2">(100'-370.37') : 0.41° Inc, 110.00ft MD, 110.00ft TVD, 0.15ft VS
 Premier MWD <12-1/4">(370.37')(505'-3301') : 1.68° Inc, 515.00ft MD, 514.98ft TVD, -1.34ft VS

Well Profile Data							
Design Comment	MD (ft)	Inc (°)	Az (°)	TVD (ft)	Local N (ft)	Local E (ft)	VS (ft)
Tie On	3311.00	28.210	243.830	3065.35	-483.77	-1006.22	-151.08
Proj. To Bottom	3396.00	28.210	243.830	3140.26	-501.49	-1042.28	-156.86
Drill Out Csg	3496.00	28.210	243.830	3228.38	-522.34	-1084.70	-163.66
End of 3D Arc	3564.73	30.265	244.176	3288.35	-537.05	-1114.87	-168.39
Curve KOP	6326.25	30.265	244.176	5673.48	-1143.32	-2367.69	-360.26
POE	7333.49	74.514	342.096	6360.00	-719.84	-2823.01	182.68
Landing Pt.	7527.06	90.000	342.096	6386.00	-537.88	-2881.79	373.90
BHL	14751.22	90.000	342.096	6386.00	6336.45	-5102.61	0.00



User specified (HDGM) Dip: 66.43° Field: 51872 nT
 Magnetic North is 7.65 degrees West of True North (at 4/6/2020)
 Grid North is 0.13 degrees East of True North
 To correct azimuth from True to Grid subtract 0.13 degrees
 To correct azimuth from Magnetic to Grid subtract 7.78 degrees



Actual Wellpath Report

Nuggets Unit 1H AWP Proj: 14773'
Page 1 of 10



REFERENCE WELLPATH IDENTIFICATION			
Operator	ANTERO RESOURCES CORPORATION	Well	Nuggets Unit 1H
Field	Tyler	API	47-095-02656-0000
Facility	Colorado West Pad	Wellbore	Nuggets Unit 1H AWB
Slot	Slot #01		

REPORT SETUP INFORMATION			
Projection System	NAD27 / UTM Zone 17 North, US feet	Software System	WellArchitect® 6.0
North Reference	Grid	User	Delaset
Scale	0.999604	Report Generated	4/20/2020 at 2:04:36 PM
Convergence at slot	0.13° East	Database	WA_MPL_EasternUS_Defn

WELLPATH LOCATION						
	Local coordinates		Grid coordinates		Geographic coordinates	
	North[ft]	East[ft]	Easting[US ft]	Northing[US ft]	Latitude	Longitude
Slot Location	27.05	-69.93	1699774.05	14308500.98	39°24'8.4680"N	80°47'23.5460"W
Facility Reference Pt			1699843.95	14308473.94	39°24'8.1990"N	80°47'22.6560"W
Field Reference Pt			0.00	0.00	0°00'0.0000"	85°29'19.3013"W

WELLPATH DATUM			
Calculation method	Minimum curvature	Patterson 342 (RKB) to Facility Vertical Datum	773.50ft
Horizontal Reference Pt	Slot	Patterson 342 (RKB) to Mean Sea Level	773.50ft
Vertical Reference Pt	Patterson 342 (RKB)	Patterson 342 (RKB) to Ground Level at Slot (Slot #01)	25.00ft
MD Reference Pt	Patterson 342 (RKB)	Section Origin	N 0.00, E 0.00 ft
Field Vertical Reference	Mean Sea Level	Section Azimuth	342.10°



Actual Wellpath Report

Nuggets Unit 1H AWP Proj: 14773'
Page 2 of 10



REFERENCE WELLPATH IDENTIFICATION			
Operator	ANTERO RESOURCES CORPORATION	Well	Nuggets Unit 1H
Field	Tyler	API	47-095-02656-0000
Facility	Colorado West Pad	Wellbore	Nuggets Unit 1H AWB
Slot	Slot #01		

WELLPATH DATA (173 stations) † = interpolated, ‡ = extrapolated station																
MD (ft)	Inclination (°)	Azimuth (°)	TVD (ft)	Vert Sect (ft)	North (ft)	East (ft)	Grid East (US ft)	Grid North (US ft)	Latitude	Longitude	Closure Dist (ft)	Closure Dir (°)	DLS (°/100ft)	Build Rate (°/100ft)	Turn Rate (°/100ft)	Comments
0.00	†	0.000	42.550	0.00	0.00	0.00	1699774.05	14308500.98	39°24'8.4680"N	80°47'23.5460"W	0.00	0.000	0.00	0.00	0.00	
25.00		0.000	42.550	25.00	0.00	0.00	1699774.05	14308500.98	39°24'8.4680"N	80°47'23.5460"W	0.00	0.000	0.00	0.00	0.00	
110.00		0.410	42.550	110.00	0.15	0.22	1699774.26	14308501.20	39°24'8.4702"N	80°47'23.5433"W	0.30	42.550	0.48	0.48	0.00	Gyrodata MS Gyro <17-1/2">(100'-370.37')
135.00		0.170	26.700	135.00	0.22	0.32	1699774.33	14308501.30	39°24'8.4712"N	80°47'23.5424"W	0.43	41.198	1.00	-0.96	-63.40	
160.00		0.060	161.440	160.00	0.23	0.34	1699774.35	14308501.32	39°24'8.4714"N	80°47'23.5421"W	0.46	41.461	0.87	-0.44	538.96	
185.00		0.060	175.230	185.00	0.21	0.32	1699774.36	14308501.30	39°24'8.4711"N	80°47'23.5420"W	0.44	44.137	0.06	0.00	55.16	
210.00		0.100	167.030	210.00	0.17	0.28	1699774.36	14308501.26	39°24'8.4708"N	80°47'23.5419"W	0.42	47.948	0.17	0.16	-32.80	
235.00		0.120	164.700	235.00	0.13	0.24	1699774.38	14308501.22	39°24'8.4703"N	80°47'23.5418"W	0.40	53.980	0.08	0.08	-9.32	
260.00		0.160	168.020	260.00	0.06	0.18	1699774.39	14308501.16	39°24'8.4697"N	80°47'23.5416"W	0.38	62.408	0.16	0.16	13.28	
285.00		0.290	172.260	285.00	-0.03	0.08	1699774.41	14308501.06	39°24'8.4688"N	80°47'23.5414"W	0.37	77.159	0.52	0.52	16.96	
310.00		0.170	158.210	310.00	-0.13	-0.02	1699774.43	14308500.96	39°24'8.4678"N	80°47'23.5411"W	0.38	92.394	0.53	-0.48	-56.20	
335.00		0.220	135.340	335.00	-0.21	-0.08	1699774.48	14308500.90	39°24'8.4671"N	80°47'23.5405"W	0.43	101.199	0.37	0.20	-91.48	
360.00		0.260	152.970	360.00	-0.31	-0.17	1699774.54	14308500.81	39°24'8.4663"N	80°47'23.5398"W	0.51	109.187	0.33	0.16	70.52	
380.37		0.230	160.870	380.37	-0.40	-0.25	1699774.57	14308500.73	39°24'8.4655"N	80°47'23.5393"W	0.58	115.563	0.22	-0.15	38.78	
515.00		1.680	232.300	514.98	-1.34	-1.71	1699773.10	14308499.27	39°24'8.4511"N	80°47'23.5582"W	1.96	209.108	1.20	1.08	53.06	Premier MWD <12-1/4">(370.37')(505'-3301')
607.00		8.190	244.980	606.59	-2.61	-5.31	1699766.09	14308495.67	39°24'8.4157"N	80°47'23.6476"W	9.57	236.305	7.13	7.08	13.78	
700.00		15.110	254.080	697.62	-3.01	-11.45	1699748.41	14308489.54	39°24'8.3554"N	80°47'23.8730"W	28.09	245.950	7.68	7.44	9.78	
792.00		18.120	254.450	785.77	-2.01	-18.57	1699723.10	14308482.42	39°24'8.2856"N	80°47'24.1958"W	54.25	249.979	3.27	3.27	0.40	
885.00		18.900	251.020	873.96	-1.70	-27.35	1699694.94	14308473.64	39°24'8.1995"N	80°47'24.5550"W	83.74	250.938	1.44	0.84	-3.69	
980.00		19.560	249.080	963.66	-2.83	-38.03	1699665.54	14308462.96	39°24'8.0946"N	80°47'24.9299"W	115.02	250.892	0.97	0.89	-2.04	
1075.00		20.240	248.290	1052.99	-4.76	-49.79	1699635.43	14308451.21	39°24'7.9791"N	80°47'25.3139"W	147.34	250.250	0.77	0.72	-0.83	
1170.00		21.850	249.110	1141.65	-6.77	-62.17	1699603.66	14308438.83	39°24'7.8574"N	80°47'25.7192"W	181.44	249.962	1.72	1.69	0.86	
1265.00		23.530	248.230	1229.30	-8.97	-75.51	1699569.55	14308425.50	39°24'7.7264"N	80°47'26.1544"W	218.08	249.742	1.80	1.77	-0.93	
1359.00		25.210	244.430	1314.92	-12.91	-91.11	1699534.07	14308409.91	39°24'7.5730"N	80°47'26.6069"W	266.78	249.218	2.44	1.79	-4.04	
1454.00		26.630	240.970	1400.37	-19.72	-110.18	1699497.21	14308390.85	39°24'7.3854"N	80°47'27.0772"W	298.06	248.306	2.18	1.49	-3.64	
1549.00		27.460	240.200	1484.98	-28.35	-131.39	1699459.61	14308369.64	39°24'7.1766"N	80°47'27.5571"W	340.91	247.330	0.95	0.87	-0.81	
1643.00		27.600	240.200	1568.34	-37.31	-152.99	1699421.92	14308348.05	39°24'6.9640"N	80°47'28.0380"W	384.06	246.525	0.15	0.15	0.00	
1738.00		27.660	240.840	1652.50	-46.15	-174.67	1699383.58	14308326.38	39°24'6.7506"N	80°47'28.5272"W	427.90	245.908	0.32	0.06	0.67	
1833.00		29.250	242.470	1736.03	-54.34	-196.14	1699343.76	14308304.92	39°24'6.5393"N	80°47'29.0354"W	473.04	245.504	1.86	1.67	1.72	
1928.00		29.350	243.940	1818.87	-61.53	-217.10	1699302.28	14308283.97	39°24'6.3331"N	80°47'29.5646"W	519.50	245.298	0.76	0.11	1.55	



Actual Wellpath Report

Nuggets Unit 1H AWP Proj: 14773'
Page 3 of 10



REFERENCE WELLPATH IDENTIFICATION			
Operator	ANTERO RESOURCES CORPORATION	Well	Nuggets Unit 1H
Field	Tyler	API	47-095-02656-0000
Facility	Colorado West Pad	Wellbore	Nuggets Unit 1H AWB
Slot	Slot #01		

WELLPATH DATA (173 stations)																
MD [ft]	Inclination [°]	Azimuth [°]	TVD [ft]	Vert Sect [ft]	North [ft]	East [ft]	Grid East [US ft]	Grid North [US ft]	Latitude	Longitude	Closure Dist [ft]	Closure Dir [°]	DLS [°/100ft]	Build Rate [°/100ft]	Turn Rate [°/100ft]	Comments
2023.00	28.250	242.770	1902.12	-68.48	-237.61	-512.87	1699261.38	14308263.46	39°24'6.1313"N	80°47'30.0863"W	565.24	245.142	1.30	-1.16	-1.23	
2117.00	27.070	241.150	1985.38	-76.15	-258.11	-551.39	1699222.88	14308242.97	39°24'5.9295"N	80°47'30.5776"W	608.81	244.915	1.49	-1.26	-1.72	
2212.00	27.230	241.180	2069.91	-84.37	-279.02	-589.36	1699184.92	14308222.07	39°24'5.7238"N	80°47'31.0620"W	652.07	244.666	0.17	0.17	0.03	
2306.00	27.440	244.380	2153.42	-91.35	-298.75	-627.73	1699146.57	14308202.34	39°24'5.5296"N	80°47'31.5514"W	695.20	244.549	1.58	0.22	3.40	
2401.00	26.000	244.710	2238.27	-96.97	-317.12	-666.30	1699108.01	14308183.99	39°24'5.3490"N	80°47'32.0432"W	737.92	244.549	1.52	-1.52	0.35	
2496.00	25.850	243.850	2323.71	-102.62	-335.14	-703.72	1699070.61	14308165.97	39°24'5.1717"N	80°47'32.5204"W	779.45	244.534	0.43	-0.16	-0.91	
2591.00	25.080	242.640	2409.48	-108.90	-353.52	-740.19	1699034.15	14308147.60	39°24'4.9909"N	80°47'32.9856"W	820.28	244.471	0.98	-0.81	-1.27	
2685.00	24.430	240.990	2494.85	-115.92	-372.10	-774.89	1698999.47	14308129.02	39°24'4.8080"N	80°47'33.4281"W	859.60	244.350	1.01	-0.69	-1.76	
2780.00	23.320	240.690	2581.72	-123.43	-390.84	-808.46	1698965.91	14308110.30	39°24'4.6236"N	80°47'33.8564"W	897.98	244.199	1.18	-1.17	-0.32	
2875.00	22.730	241.720	2669.15	-130.46	-408.74	-841.02	1698933.36	14308092.41	39°24'4.4474"N	80°47'34.2716"W	935.09	244.080	0.75	-0.62	1.08	
2970.00	22.670	244.890	2756.79	-136.06	-425.20	-873.77	1698900.63	14308075.95	39°24'4.2854"N	80°47'34.6892"W	971.73	244.051	1.29	-0.06	3.34	
3064.00	23.650	246.800	2843.22	-140.08	-440.32	-907.50	1698866.91	14308060.84	39°24'4.1368"N	80°47'35.1194"W	1008.68	244.117	1.31	1.04	2.03	
3159.00	25.570	247.200	2929.58	-143.59	-455.77	-943.92	1698830.51	14308045.39	39°24'3.9849"N	80°47'35.5837"W	1048.19	244.226	2.03	2.02	0.42	
3254.00	26.860	245.740	3014.81	-147.72	-472.53	-982.38	1698792.06	14308028.63	39°24'3.8201"N	80°47'36.0742"W	1090.12	244.312	1.52	1.36	-1.54	
3311.00	28.210	243.830	3065.35	-151.08	-483.77	-1006.22	1698768.23	14308017.41	39°24'3.7096"N	80°47'36.3782"W	1116.47	244.323	2.83	2.37	-3.35	
3395.00	29.330	241.370	3138.99	-157.77	-502.38	-1042.09	1698732.37	14307998.80	39°24'3.5264"N	80°47'36.8357"W	1156.87	244.262	1.94	1.33	-2.93	APS EM <8-3/4">(3311')(3395-5196')
3489.00	30.990	245.200	3220.27	-164.96	-523.57	-1084.28	1698690.20	14307977.62	39°24'3.3180"N	80°47'37.3737"W	1204.07	244.225	2.70	1.77	4.07	
3584.00	31.090	245.270	3301.66	-170.82	-544.09	-1128.76	1698645.74	14307957.11	39°24'3.1162"N	80°47'37.9409"W	1253.05	244.265	0.11	0.11	0.07	
3679.00	28.750	241.810	3384.00	-177.82	-565.15	-1171.18	1698603.33	14307936.06	39°24'2.9090"N	80°47'38.4820"W	1300.41	244.241	3.06	-2.46	-3.64	
3774.00	30.090	242.380	3466.75	-185.92	-586.98	-1212.42	1698562.11	14307914.23	39°24'2.6942"N	80°47'39.0079"W	1347.04	244.167	1.44	1.41	0.60	
3869.00	33.200	248.100	3547.63	-191.76	-607.73	-1257.68	1698516.87	14307893.49	39°24'2.4901"N	80°47'39.5850"W	1396.81	244.209	4.55	3.27	6.02	
3965.00	31.360	242.250	3628.81	-197.87	-629.17	-1304.19	1698470.38	14307872.06	39°24'2.2792"N	80°47'40.1781"W	1448.02	244.246	3.77	-1.92	-6.09	
4059.00	30.060	241.470	3709.63	-206.39	-651.81	-1346.52	1698428.07	14307849.43	39°24'2.0565"N	80°47'40.7180"W	1495.98	244.170	1.45	-1.38	-0.83	
4154.00	31.310	244.390	3791.33	-214.10	-673.84	-1389.68	1698384.92	14307827.41	39°24'1.8396"N	80°47'41.2685"W	1544.44	244.132	2.05	1.32	3.07	
4249.00	34.110	245.600	3871.26	-220.42	-695.52	-1436.21	1698338.41	14307805.74	39°24'1.6264"N	80°47'41.8619"W	1595.76	244.160	3.03	2.95	1.27	
4344.00	31.900	246.010	3950.92	-226.10	-716.73	-1483.41	1698291.23	14307784.53	39°24'1.4178"N	80°47'42.4637"W	1647.48	244.212	2.34	-2.33	0.43	
4438.00	29.740	249.540	4031.65	-229.78	-734.98	-1527.95	1698246.71	14307766.29	39°24'1.2384"N	80°47'43.0316"W	1695.54	244.311	3.00	-2.30	3.76	
4533.00	28.400	247.240	4114.68	-232.75	-751.96	-1570.87	1698203.81	14307749.32	39°24'1.0716"N	80°47'43.5788"W	1741.57	244.420	1.84	-1.41	-2.42	
4627.00	28.730	244.450	4197.24	-237.65	-770.36	-1611.86	1698162.83	14307730.93	39°24'0.8907"N	80°47'44.1016"W	1786.49	244.456	1.46	0.35	-2.97	
4722.00	29.400	240.360	4280.29	-245.44	-791.74	-1652.73	1698121.98	14307709.55	39°24'0.6803"N	80°47'44.6228"W	1832.59	244.403	2.21	0.71	-4.32	



Actual Wellpath Report

Nuggets Unit 1H AWP Proj: 14773'
Page 4 of 10



REFERENCE WELLPATH IDENTIFICATION			
Operator	ANTERO RESOURCES CORPORATION	Well	Nuggets Unit 1H
Field	Tyler	API	47-095-02656-0000
Facility	Colorado West Pad	Wellbore	Nuggets Unit 1H AWB
Slot	Slot #01		

WELLPATH DATA (173 stations) † = interpolated, ‡ = extrapolated station																
MD (ft)	Inclination (°)	Azimuth (°)	TVD (ft)	Vert Sect (ft)	North (ft)	East (ft)	Grid East (US ft)	Grid North (US ft)	Latitude	Longitude	Closure Dist (ft)	Closure Dir (°)	DLS (°/100ft)	Build Rate (°/100ft)	Turn Rate (°/100ft)	Comments
4817.00	30.480	240.460	4362.61	-255.05	-815.16	-1693.96	1698080.76	14307686.15	39°24'0.4498"N	80°47'45.1487"W	1879.89	244.303	1.14	1.14	0.12	
4912.00	30.530	243.030	4444.46	-263.71	-837.98	-1736.43	1698038.31	14307663.33	39°24'0.2252"N	80°47'45.6903"W	1928.05	244.239	1.37	0.05	2.71	
5007.00	28.950	244.520	4526.95	-270.55	-858.82	-1778.69	1697996.06	14307642.51	39°24'0.0202"N	80°47'46.2293"W	1975.17	244.227	1.84	-1.66	1.57	
5101.00	27.780	246.820	4609.66	-275.57	-877.23	-1819.37	1697955.40	14307624.10	39°23'59.8391"N	80°47'46.7480"W	2019.81	244.259	1.70	-1.24	2.45	
5196.00	26.320	245.300	4694.27	-280.10	-894.74	-1858.86	1697915.93	14307606.59	39°23'59.6669"N	80°47'47.2515"W	2062.99	244.297	1.70	-1.54	-1.60	
5286.00	24.340	240.530	4775.62	-286.18	-912.21	-1893.14	1697881.66	14307589.14	39°23'59.4950"N	80°47'47.6887"W	2101.45	244.273	3.16	-2.20	-5.30	BH AT Curve <8-1/2">(5196)(5286-14748)
5334.00	25.880	240.990	4819.09	-290.18	-922.15	-1910.91	1697863.90	14307579.19	39°23'59.3971"N	80°47'47.9154"W	2121.78	244.239	3.23	3.21	0.96	
5429.00	29.330	244.960	4903.27	-297.07	-942.06	-1950.14	1697824.68	14307559.29	39°23'59.2012"N	80°47'48.4157"W	2165.77	244.216	4.11	3.63	4.18	
5524.00	32.080	243.370	4984.94	-303.80	-963.22	-1993.78	1697781.06	14307538.14	39°23'58.9930"N	80°47'48.9722"W	2214.27	244.214	3.02	2.89	-1.67	
5618.00	31.840	242.760	5064.69	-311.61	-985.76	-2038.14	1697736.72	14307515.61	39°23'58.7713"N	80°47'49.5379"W	2264.01	244.189	0.43	-0.28	-0.65	
5713.00	32.140	243.090	5145.27	-319.63	-1008.67	-2082.95	1697691.92	14307492.71	39°23'58.5459"N	80°47'50.1094"W	2314.33	244.161	0.37	0.32	0.35	
5808.00	31.980	241.010	5225.78	-328.43	-1032.30	-2127.49	1697647.40	14307469.09	39°23'58.3133"N	80°47'50.6774"W	2364.71	244.116	1.17	-0.17	-2.19	
5902.00	31.890	240.360	5305.55	-338.27	-1056.64	-2170.85	1697604.07	14307444.76	39°23'58.0737"N	80°47'51.2304"W	2414.35	244.046	0.38	-0.10	-0.69	
5996.00	30.110	240.400	5386.12	-348.11	-1080.57	-2212.93	1697562.00	14307420.84	39°23'57.8381"N	80°47'51.7672"W	2462.66	243.974	1.89	-1.89	0.04	
6090.00	28.470	242.290	5468.10	-356.70	-1102.64	-2253.27	1697521.67	14307398.78	39°23'57.6209"N	80°47'52.2817"W	2508.60	243.925	2.00	-1.74	2.01	
6185.00	29.600	243.680	5551.16	-364.00	-1123.57	-2294.35	1697480.61	14307377.86	39°23'57.4149"N	80°47'52.8055"W	2554.69	243.908	1.39	1.19	1.46	
6279.00	30.720	248.870	5632.45	-368.75	-1142.52	-2337.56	1697437.42	14307358.91	39°23'57.2286"N	80°47'53.3565"W	2601.84	243.952	3.02	1.19	5.52	
6374.00	29.130	268.880	5714.99	-363.43	-1151.74	-2383.43	1697391.56	14307349.69	39°23'57.1384"N	80°47'53.9411"W	2647.13	244.209	10.60	-1.67	21.06	
6469.00	31.060	280.470	5797.25	-345.09	-1147.74	-2430.70	1697344.32	14307353.70	39°23'57.1791"N	80°47'54.5430"W	2688.05	244.724	6.44	2.03	12.20	
6564.00	33.940	290.740	5877.43	-316.86	-1133.88	-2479.65	1697295.39	14307367.55	39°23'57.3171"N	80°47'55.1662"W	2726.60	245.427	6.54	3.03	10.81	
6658.00	37.210	301.320	5953.95	-278.90	-1109.78	-2528.53	1697246.53	14307391.64	39°23'57.5563"N	80°47'55.7882"W	2761.35	246.303	7.40	3.48	11.26	
6753.00	41.270	310.160	6027.57	-230.51	-1074.60	-2577.07	1697198.01	14307426.80	39°23'57.9051"N	80°47'56.4055"W	2792.14	247.365	7.27	4.27	9.31	
6847.00	46.020	317.010	6095.61	-173.50	-1029.82	-2623.88	1697151.22	14307471.57	39°23'58.3488"N	80°47'57.0005"W	2818.73	248.571	7.12	5.05	7.29	
6924.00†	50.738	321.030	6146.75	-120.56	-986.35	-2661.54	1697113.56	14307515.03	39°23'58.7793"N	80°47'57.4791"W	2838.43	249.666	7.26	6.13	5.22	Middlesex: 6924' MD
6942.00	51.860	321.890	6158.00	-107.41	-975.36	-2670.30	1697104.82	14307526.01	39°23'58.8881"N	80°47'57.5903"W	2842.85	249.935	7.26	6.23	4.78	
7037.00	55.400	324.240	6214.33	-35.11	-914.21	-2716.22	1697058.91	14307587.13	39°23'59.4934"N	80°47'58.1735"W	2865.94	251.398	4.22	3.73	2.47	
7131.00	60.110	327.370	6264.48	41.18	-848.45	-2760.83	1697014.31	14307652.87	39°24'0.1443"N	80°47'58.7400"W	2888.27	252.917	5.75	5.01	3.33	
7169.00†	62.253	328.959	6282.80	73.49	-820.17	-2778.39	1696996.77	14307681.14	39°24'0.4243"N	80°47'58.9628"W	2896.92	253.554	6.73	5.64	4.18	Burkett: 7169' MD
7226.00	65.500	331.230	6307.89	123.54	-775.81	-2803.89	1696971.28	14307725.48	39°24'0.8633"N	80°47'59.2864"W	2909.24	254.534	6.73	5.70	3.98	
7231.00†	65.890	331.482	6309.95	128.02	-771.81	-2806.07	1696969.09	14307729.48	39°24'0.9029"N	80°47'59.3141"W	2910.28	254.621	9.05	7.80	5.04	Tully: 7231' MD



Actual Wellpath Report

Nuggets Unit 1H AWP Proj: 14773'
Page 5 of 10



REFERENCE WELLPATH IDENTIFICATION			
Operator	ANTERO RESOURCES CORPORATION	Well	Nuggets Unit 1H
Field	Tyler	API	47-095-02656-0000
Facility	Colorado West Pad	Wellbore	Nuggets Unit 1H AWB
Slot	Slot #01		

WELLPATH DATA (173 stations) † = interpolated, ‡ = extrapolated station																	
MD (ft)	Inclination (°)	Azimuth (°)	TVD (ft)	Vert Sect (ft)	North (ft)	East (ft)	Grid East (US ft)	Grid North (US ft)	Latitude	Longitude	Closure Dist (ft)	Closure Dir (°)	DLS (°/100ft)	Build Rate (°/100ft)	Turn Rate (°/100ft)	Comments	
7273.00	69.180	333.540	6326.00	166.28	-737.38	-2823.98	1696951.20	14307763.89	39°24'1.2435"N	80°47'59.5412"W	2918.66	255.366	9.05	7.83	4.90		
7320.00	72.820	337.370	6341.30	210.41	-696.96	-2842.42	1696932.77	14307804.29	39°24'1.6433"N	80°47'59.7749"W	2926.62	256.223	10.92	7.74	8.15		
7371.00†	75.032	339.775	6355.43	259.31	-651.35	-2860.31	1696914.88	14307849.89	39°24'2.0946"N	80°48'0.0016"W	2933.54	257.171	6.27	4.34	4.72	Marcellus POE: 7371' MD	
7415.00	76.960	341.810	6366.07	301.99	-611.04	-2874.35	1696900.84	14307890.19	39°24'2.4933"N	80°48'0.1793"W	2938.58	257.999	6.27	4.38	4.62		
7509.00	85.560	345.940	6380.35	394.75	-521.88	-2900.09	1696875.12	14307979.31	39°24'3.3751"N	80°48'0.5046"W	2946.67	259.799	10.13	9.15	4.39		
7604.00	90.740	348.020	6383.42	489.31	-429.40	-2921.47	1696853.74	14308071.75	39°24'4.2895"N	80°48'0.7744"W	2952.86	261.638	5.88	5.45	2.19		
7698.00	90.460	347.340	6382.43	582.86	-337.57	-2941.52	1696833.70	14308163.54	39°24'5.1976"N	80°48'1.0273"W	2960.83	263.453	0.78	-0.30	-0.72		
7793.00	90.220	346.080	6381.87	677.55	-245.12	-2963.36	1696811.87	14308255.96	39°24'6.1118"N	80°48'1.3029"W	2973.48	265.271	1.35	-0.25	-1.33		
7887.00	89.510	344.680	6382.09	771.39	-154.17	-2987.09	1696788.15	14308346.87	39°24'7.0112"N	80°48'1.6025"W	2991.06	267.045	1.67	-0.76	-1.49		
7982.00	89.480	343.720	6382.93	866.33	-62.76	-3012.95	1696762.30	14308438.24	39°24'7.9152"N	80°48'1.9295"W	3013.61	268.807	1.01	-0.03	-1.01		
8076.00	89.420	342.980	6383.83	960.30	27.29	-3039.88	1696735.38	14308528.26	39°24'8.8059"N	80°48'2.2700"W	3040.01	270.514	0.79	-0.06	-0.79		
8171.00	89.230	342.430	6384.95	1055.29	117.99	-3068.12	1696707.15	14308618.92	39°24'9.7029"N	80°48'2.6272"W	3070.39	272.202	0.61	-0.20	-0.58		
8266.00	89.020	341.620	6386.40	1150.27	208.34	-3097.44	1696677.84	14308709.24	39°24'10.5965"N	80°48'2.9981"W	3104.44	273.848	0.88	-0.22	-0.85		
8361.00	89.540	340.270	6387.59	1245.25	298.13	-3128.45	1696646.84	14308798.99	39°24'11.4846"N	80°48'3.3906"W	3142.62	275.444	1.52	0.55	-1.42		
8455.00	89.230	338.300	6388.60	1339.12	386.04	-3161.70	1696613.61	14308886.87	39°24'12.3542"N	80°48'3.8117"W	3185.18	276.961	2.12	-0.33	-2.10		
8550.00	89.320	338.620	6389.80	1433.92	474.40	-3196.57	1696578.75	14308975.19	39°24'13.2283"N	80°48'4.2535"W	3231.58	278.442	0.35	0.09	0.34		
8645.00	89.230	338.410	6391.01	1528.73	562.79	-3231.36	1696543.97	14309063.55	39°24'14.1026"N	80°48'4.6943"W	3280.01	279.880	0.24	-0.09	-0.22		
8739.00	89.420	337.550	6392.11	1622.48	649.93	-3266.61	1696508.74	14309150.65	39°24'14.9646"N	80°48'5.1408"W	3330.63	281.253	0.94	0.20	-0.91		
8834.00	89.600	338.190	6392.93	1717.22	737.92	-3302.39	1696472.97	14309238.61	39°24'15.8351"N	80°48'5.5942"W	3383.83	282.596	0.70	0.19	0.67		
8928.00	90.000	340.980	6393.25	1811.12	826.01	-3335.18	1696440.20	14309326.66	39°24'16.7064"N	80°48'6.0094"W	3435.94	283.910	3.00	0.43	2.97		
9023.00	89.350	341.530	6393.79	1906.10	915.97	-3365.70	1696409.68	14309416.58	39°24'17.5962"N	80°48'6.3958"W	3488.12	285.224	0.90	-0.68	0.58		
9117.00	89.780	342.260	6394.51	2000.10	1005.31	-3394.91	1696380.49	14309505.89	39°24'18.4798"N	80°48'6.7654"W	3540.64	286.495	0.90	0.46	0.78		
9211.00	89.910	343.380	6394.76	2094.09	1095.12	-3422.68	1696352.73	14309595.66	39°24'19.3680"N	80°48'7.1166"W	3593.61	287.743	1.20	0.14	1.19		
9306.00	89.570	343.640	6395.19	2189.06	1186.21	-3449.64	1696325.78	14309686.71	39°24'20.2689"N	80°48'7.4576"W	3647.89	288.976	0.45	-0.36	0.27		
9402.00	89.660	343.910	6395.84	2285.02	1278.38	-3476.47	1696298.97	14309778.85	39°24'21.1805"N	80°48'7.7967"W	3704.06	290.190	0.30	0.09	0.28		
9496.00	89.910	346.430	6396.19	2378.87	1369.24	-3500.52	1696274.92	14309869.68	39°24'22.0790"N	80°48'8.1006"W	3758.79	291.363	2.69	0.27	2.68		
9590.00	89.880	346.610	6396.36	2472.59	1460.65	-3522.44	1696253.02	14309961.05	39°24'22.9830"N	80°48'8.3772"W	3813.27	292.522	0.19	-0.03	0.19		
9684.00	89.880	346.510	6396.56	2566.31	1552.08	-3544.28	1696231.18	14310052.44	39°24'23.8871"N	80°48'8.6530"W	3869.22	293.649	0.11	0.00	-0.11		
9779.00	89.940	347.130	6396.71	2660.99	1644.57	-3565.95	1696209.52	14310144.90	39°24'24.8017"N	80°48'8.9264"W	3926.91	294.759	0.66	0.06	0.65		
9874.00	89.540	348.250	6397.14	2755.53	1737.39	-3586.20	1696189.28	14310237.68	39°24'25.7195"N	80°48'9.1818"W	3984.89	295.849	1.25	-0.42	1.18		



Actual Wellpath Report

Nuggets Unit 1H AWP Proj: 14773'
Page 6 of 10



REFERENCE WELLPATH IDENTIFICATION			
Operator	ANTERO RESOURCES CORPORATION	Well	Nuggets Unit 1H
Field	Tyler	API	47-095-02656-0000
Facility	Colorado West Pad	Wellbore	Nuggets Unit 1H AWP
Slot	Slot #01		

WELLPATH DATA (173 stations)																
MD (ft)	Inclination (°)	Azimuth (°)	TVD (ft)	Vert Sect (ft)	North (ft)	East (ft)	Grid East (US ft)	Grid North (US ft)	Latitude	Longitude	Closure Dist (ft)	Closure Dir (°)	DLS (ft/100ft)	Build Rate (ft/100ft)	Turn Rate (ft/100ft)	Comments
9969.00	90.030	346.530	6397.50	2850.12	1830.09	-3606.94	1696168.55	14310330.34	39°24'26.6362"N	80°48'9.4435"W	4044.66	296.902	1.88	0.52	-1.81	
10063.00	89.940	343.820	6397.52	2943.98	1920.95	-3630.99	1696144.51	14310421.17	39°24'27.5347"N	80°48'9.7473"W	4107.81	297.881	2.88	-0.10	-2.88	
10158.00	90.120	340.490	6397.47	3038.96	2011.37	-3660.10	1696115.41	14310511.55	39°24'28.4290"N	80°48'10.1156"W	4176.35	298.791	3.51	0.19	-3.51	
10252.00	89.880	337.090	6397.47	3132.79	2098.99	-3694.10	1696081.42	14310599.14	39°24'29.2957"N	80°48'10.5464"W	4248.78	299.605	3.63	-0.26	-3.62	
10347.00	89.910	335.280	6397.65	3227.28	2185.90	-3732.46	1696043.08	14310686.01	39°24'30.1555"N	80°48'11.0326"W	4325.43	300.355	1.91	0.03	-1.91	
10442.00	89.880	334.040	6397.82	3321.48	2271.76	-3773.11	1696002.44	14310771.83	39°24'31.0049"N	80°48'11.5482"W	4404.23	301.052	1.31	-0.03	-1.31	
10536.00	89.910	332.490	6397.99	3414.36	2355.70	-3815.40	1695960.17	14310855.75	39°24'31.8355"N	80°48'12.0846"W	4484.04	301.692	1.65	0.03	-1.65	
10631.00	89.850	333.290	6398.19	3508.14	2440.27	-3858.69	1695916.89	14310940.27	39°24'32.6722"N	80°48'12.6338"W	4565.57	302.310	0.84	-0.06	0.84	
10726.00	89.910	336.910	6398.39	3602.41	2526.42	-3898.68	1695876.92	14311026.40	39°24'33.5246"N	80°48'13.1409"W	4645.70	302.944	3.81	0.06	3.81	
10821.00	89.820	340.530	6398.61	3697.23	2614.93	-3933.16	1695842.46	14311114.87	39°24'34.4001"N	80°48'13.5777"W	4723.09	303.618	3.81	-0.09	3.81	
10915.00	89.850	343.730	6398.88	3791.22	2704.38	-3962.00	1695813.63	14311204.29	39°24'35.2848"N	80°48'13.9426"W	4796.99	304.317	3.40	0.03	3.40	
11010.00	90.000	345.870	6399.01	3886.11	2796.05	-3986.90	1695788.73	14311295.92	39°24'36.1914"N	80°48'14.2574"W	4869.63	305.042	2.26	0.16	2.25	
11104.00	89.880	346.050	6399.11	3979.90	2887.24	-4009.71	1695765.94	14311387.08	39°24'37.0932"N	80°48'14.5454"W	4941.05	305.756	0.23	-0.13	0.19	
11199.00	89.780	347.370	6399.39	4074.59	2979.70	-4031.54	1695744.11	14311479.49	39°24'38.0074"N	80°48'14.8211"W	5013.18	306.468	1.39	-0.11	1.39	
11294.00	89.850	348.010	6399.70	4169.13	3072.51	-4051.80	1695723.86	14311572.27	39°24'38.9252"N	80°48'15.0766"W	5085.02	307.173	0.68	0.07	0.67	
11389.00	89.850	346.260	6399.94	4263.76	3165.12	-4072.95	1695702.72	14311664.84	39°24'39.8410"N	80°48'15.3435"W	5158.19	307.851	1.84	0.00	-1.84	
11483.00	89.910	344.780	6400.14	4357.59	3256.14	-4096.45	1695679.23	14311755.82	39°24'40.7410"N	80°48'15.6404"W	5232.91	308.480	1.58	0.06	-1.57	
11577.00	90.030	344.420	6400.19	4451.50	3346.76	-4121.42	1695654.27	14311846.41	39°24'41.6372"N	80°48'15.9559"W	5309.13	309.078	0.40	0.13	-0.38	
11672.00	89.630	346.040	6400.47	4546.36	3438.82	-4145.63	1695630.07	14311938.23	39°24'42.5456"N	80°48'16.2620"W	5386.13	309.674	1.76	-0.42	1.71	
11766.00	89.660	347.120	6401.06	4640.07	3530.05	-4167.45	1695608.26	14312029.62	39°24'43.4497"N	80°48'16.5374"W	5461.58	310.266	1.15	0.03	1.15	
11861.00	89.910	342.220	6401.41	4734.94	3621.64	-4192.56	1695583.16	14312121.18	39°24'44.3555"N	80°48'16.8548"W	5540.20	310.821	5.16	0.26	-5.16	
11956.00	89.720	338.830	6401.72	4829.89	3711.19	-4224.22	1695551.51	14312210.69	39°24'45.2413"N	80°48'17.2558"W	5622.90	311.301	3.57	-0.20	-3.57	
12051.00	89.820	334.400	6402.10	4924.43	3798.36	-4261.92	1695513.82	14312297.83	39°24'46.1036"N	80°48'17.7336"W	5708.90	311.708	4.66	0.11	-4.66	
12146.00	90.120	332.450	6402.15	5018.34	3883.32	-4304.42	1695471.34	14312382.76	39°24'46.9442"N	80°48'18.2728"W	5797.26	312.056	2.08	0.32	-2.05	
12241.00	89.820	335.520	6402.20	5112.38	3968.69	-4346.08	1695429.70	14312468.09	39°24'47.7888"N	80°48'18.8012"W	5885.48	312.401	3.25	-0.32	3.23	
12335.00	89.720	342.310	6402.58	5206.18	4056.34	-4379.88	1695395.91	14312555.71	39°24'48.6559"N	80°48'19.2294"W	5969.69	312.804	7.22	-0.11	7.22	
12429.00	89.750	349.300	6403.01	5299.92	4147.41	-4402.92	1695372.89	14312646.74	39°24'49.5565"N	80°48'19.5204"W	6048.69	313.288	7.44	0.03	7.44	
12524.00	90.120	350.590	6403.12	5394.03	4240.95	-4419.50	1695356.31	14312740.24	39°24'50.4813"N	80°48'19.7292"W	6125.17	313.819	1.41	0.39	1.36	
12619.00	89.720	348.390	6403.25	5488.23	4334.35	-4436.83	1695338.99	14312833.61	39°24'51.4048"N	80°48'19.9474"W	6202.59	314.331	2.35	-0.42	-2.32	
12713.00	89.850	344.320	6403.61	5581.95	4425.68	-4459.00	1695316.83	14312924.90	39°24'52.3079"N	80°48'20.2274"W	6282.46	314.785	4.33	0.14	-4.33	



Actual Wellpath Report

Nuggets Unit 1H AWP Proj: 14773'
Page 7 of 10



REFERENCE WELLPATH IDENTIFICATION			
Operator	ANTERO RESOURCES CORPORATION	Well	Nuggets Unit 1H
Field	Tyler	API	47-095-02656-0000
Facility	Colorado West Pad	Wellbore	Nuggets Unit 1H AWB
Slot	Slot #01		

WELLPATH DATA (173 stations) † = interpolated, ‡ = extrapolated station																
MD [ft]	Inclination [°]	Azimuth [°]	TVD [ft]	Vert Sect [ft]	North [ft]	East [ft]	Grid East [US ft]	Grid North [US ft]	Latitude	Longitude	Closure Dist [ft]	Closure Dir [°]	DLS [°/100ft]	Build Rate [°/100ft]	Turn Rate [°/100ft]	Comments
12808.00	89.940	345.930	6403.78	5676.82	4517.49	-4483.39	1695292.45	14313016.68	39°24'53.2159"N	80°48'20.5355"W	6364.63	315.217	1.70	0.09	1.69	
12902.00	89.970	347.590	6403.85	5770.51	4608.99	-4504.91	1695270.93	14313108.14	39°24'54.1207"N	80°48'20.8073"W	6444.92	315.654	1.77	0.03	1.77	
12997.00	89.970	341.550	6403.90	5865.37	4700.52	-4530.18	1695245.68	14313199.63	39°24'55.0259"N	80°48'21.1267"W	6528.20	316.057	6.36	0.00	-6.36	
13092.00	89.910	335.350	6404.00	5960.13	4788.84	-4565.06	1695210.81	14313287.91	39°24'55.8995"N	80°48'21.5687"W	6616.10	316.370	6.53	-0.06	-6.53	
13187.00	90.030	337.430	6404.05	6054.66	4875.88	-4603.10	1695172.78	14313374.92	39°24'56.7608"N	80°48'22.0511"W	6705.43	316.648	2.19	0.13	2.19	
13282.00	90.030	341.020	6404.00	6149.52	4964.69	-4636.79	1695139.10	14313463.70	39°24'57.6390"N	80°48'22.4779"W	6793.23	316.956	3.78	0.00	3.78	
13376.00	90.030	340.340	6403.95	6243.49	5053.40	-4667.89	1695108.02	14313552.37	39°24'58.5164"N	80°48'22.8717"W	6879.39	317.271	0.72	0.00	-0.72	
13470.00	89.720	336.390	6404.16	6337.27	5140.76	-4702.54	1695073.38	14313639.69	39°24'59.3806"N	80°48'23.3108"W	6967.16	317.549	4.22	-0.33	-4.20	
13565.00	90.120	333.400	6404.29	6431.51	5226.77	-4742.84	1695033.09	14313725.67	39°25'0.2316"N	80°48'23.8220"W	7057.88	317.779	3.18	0.42	-3.15	
13660.00	89.910	333.800	6404.27	6525.47	5311.87	-4785.08	1694990.87	14313810.73	39°25'1.0735"N	80°48'24.3579"W	7149.33	317.987	0.48	-0.22	0.42	
13754.00	89.820	335.230	6404.49	6618.64	5396.72	-4825.53	1694950.44	14313895.55	39°25'1.9129"N	80°48'24.8709"W	7239.49	318.198	1.52	-0.10	1.52	
13849.00	89.910	337.610	6404.71	6713.17	5483.78	-4863.53	1694912.46	14313982.58	39°25'2.7742"N	80°48'25.3527"W	7329.78	318.430	2.51	0.09	2.51	
13944.00	90.150	342.610	6404.66	6808.08	5573.08	-4895.84	1694880.16	14314071.85	39°25'3.6575"N	80°48'25.7619"W	7418.12	318.701	5.27	0.25	5.26	
14038.00	90.030	345.730	6404.51	6902.01	5663.51	-4921.48	1694854.53	14314162.23	39°25'4.5518"N	80°48'26.0862"W	7503.08	319.010	3.32	-0.13	3.32	
14133.00	90.310	347.070	6404.23	6996.74	5755.84	-4943.81	1694832.20	14314254.53	39°25'5.4648"N	80°48'26.3683"W	7587.56	319.340	1.44	0.29	1.41	
14227.00	90.120	349.160	6403.88	7090.22	5847.82	-4963.17	1694812.85	14314346.47	39°25'6.3743"N	80°48'26.6124"W	7670.08	319.678	2.23	-0.20	2.22	
14322.00	90.120	350.950	6403.68	7184.30	5941.39	-4979.58	1694796.45	14314440.00	39°25'7.2994"N	80°48'26.8189"W	7752.18	320.033	1.88	0.00	1.88	
14416.00	89.910	349.290	6403.66	7277.38	6033.99	-4995.71	1694780.33	14314532.57	39°25'8.2150"N	80°48'27.0219"W	7833.65	320.378	1.78	-0.22	-1.77	
14511.00	89.880	346.320	6403.83	7371.89	6126.84	-5015.77	1694760.27	14314625.38	39°25'9.1331"N	80°48'27.2751"W	7918.09	320.694	3.13	-0.03	-3.13	
14606.00	89.850	343.960	6404.05	7466.75	6218.65	-5040.13	1694735.92	14314717.16	39°25'10.0411"N	80°48'27.5830"W	8004.66	320.976	2.48	-0.03	-2.48	
14701.00	90.150	340.870	6404.05	7561.74	6309.20	-5068.83	1694707.23	14314807.67	39°25'10.9366"N	80°48'27.9462"W	8093.15	321.221	3.27	0.32	-3.25	
14748.00	89.940	338.970	6404.02	7608.70	6353.34	-5084.97	1694691.11	14314851.79	39°25'11.3732"N	80°48'28.1506"W	8137.68	321.328	4.07	-0.45	-4.04	
14773.00†	89.940	338.970	6404.04	7633.67	6376.68	-5093.94	1694682.14	14314875.12	39°25'11.6040"N	80°48'28.2643"W	8161.51	321.381	0.00	0.00	0.00	Projected MD at TD: 14773' MD



Actual Wellpath Report

Nuggets Unit 1H AWP Proj: 14773'

Page 8 of 10



REFERENCE WELLPATH IDENTIFICATION			
Operator	ANTERO RESOURCES CORPORATION	Well	Nuggets Unit 1H
Field	Tyler	API	47-095-02656-0000
Facility	Colorado West Pad	Wellbore	Nuggets Unit 1H AWB
Slot	Slot #01		

HOLE & CASING SECTIONS - Ref Wellbore: Nuggets Unit 1H AWB Ref Wellpath: Nuggets Unit 1H AWP Proj: 14773'									
String/Diameter	Start MD [ft]	End MD [ft]	Interval [ft]	Start TVD [ft]	End TVD [ft]	Start N/S [ft]	Start E/W [ft]	End N/S [ft]	End E/W [ft]
20in Conductor	25.00	105.00	80.00	25.00	105.00	0.00	0.00	0.20	0.18
17.5in Open Hole	105.00	413.00	308.00	105.00	413.00	0.20	0.18	-0.43	0.47
13.375in Casing Surface	25.00	413.00	388.00	25.00	413.00	0.00	0.00	-0.43	0.47
12.25in Open Hole	413.00	3358.00	2945.00	413.00	3106.65	-0.43	0.47	-493.91	-1026.23
9.625in Casing Intermediate	25.00	3358.00	3333.00	25.00	3106.65	0.00	0.00	-493.91	-1026.23
8.75in Open Hole	3358.00	6325.00	2967.00	3106.65	5672.25	-493.91	-1026.23	-1149.06	-2359.65
8.5in Open Hole	6325.00	14773.00	8448.00	5672.25	6404.04	-1149.06	-2359.65	6376.68	-5093.94
5.5in Casing Production	25.00	14773.00	14748.00	25.00	6404.04	0.00	0.00	6376.68	-5093.94

TARGETS								
Name	TVD [ft]	North [ft]	East [ft]	Grid East [US ft]	Grid North [US ft]	Latitude	Longitude	Shape
Nuggets Unit 1H - POE - Rev-2	6360.00	-719.84	-2823.01	1696952.16	14307781.43	39°24'1.4168"N	80°47'59.5284"W	point
Nuggets Unit 1H - BHL - Rev-2	6386.00	6336.45	-5102.61	1694673.47	14314834.91	39°25'11.2066"N	80°48'28.3759"W	point
Nuggets Unit 1H - LP - Rev-2	6386.00	-537.88	-2881.79	1696893.40	14307963.32	39°24'3.2166"N	80°48'0.2721"W	point
Nuggets Unit 1H - 50' L/R Hardline	6450.00	2808.31	-3962.81	1695812.81	14311308.17	39°24'36.3120"N	80°48'13.9502"W	rectangle
2D Rectangle 7417.72 x 100.								



Actual Wellpath Report

Nuggets Unit 1H AWP Proj: 14773'
Page 9 of 10



REFERENCE WELLPATH IDENTIFICATION			
Operator	ANTERO RESOURCES CORPORATION	Well	Nuggets Unit 1H
Field	Tyler	API	47-095-02656-0000
Facility	Colorado West Pad	Wellbore	Nuggets Unit 1H AWB
Slot	Slot #01		

WELLPATH COMPOSITION - Ref Wellbore: Nuggets Unit 1H AWB Ref Wellpath: Nuggets Unit 1H AWP Proj: 14773'					
Start MD [ft]	End MD [ft]	Positional Uncertainty Model	Log Name/Comment	Wellbore	Survey Date
25.00	380.37	Gyrodata 2015 - GC+WIR+DPIPE	01_Gyrodata MS Gyro <17-1/2">(100'-370.37')	Nuggets Unit 1H AWB	1/3/2020
380.37	3311.00	OWSG MWD rev2 + HRGM	02_Premier MWD <12-1/4">(370.37')(505'-3301')	Nuggets Unit 1H AWB	1/3/2020
3311.00	5196.00	BH NaviTrak (2019) (Axial)	03_APS EM <8-3/4">(3311')(3395'-5196')	Nuggets Unit 1H AWB	4/8/2020
5196.00	14773.00	BH AutoTrak Curve (2019) (Short spacing)	04_BH AT Curve <8-1/2">(5196')(5286'-14748')	Nuggets Unit 1H AWB	4/8/2020



Actual Wellpath Report

Nuggets Unit 1H AWP Proj: 14773'
Page 10 of 10



REFERENCE WELLPATH IDENTIFICATION			
Operator	ANTERO RESOURCES CORPORATION	Well	Nuggets Unit 1H
Field	Tyler	API	47-095-02656-0000
Facility	Colorado West Pad	Wellbore	Nuggets Unit 1H AWB
Slot	Slot #01		

COMMENTS
<p>Wellpath general comments API: 47-095-02656-0000 BHI Job #: 110351026A Rig: Patterson 342 Duration: 04/09/2020-04/12/2020 Gyrodatta MS Gyro <17-1/2">(100'-370.37') Premier MWD <12-1/4">(370.37')(505'-3301') APS EM <8-3/4">(3311')(3395'-5196') BH AT Curve <8-1/2">(5196')(5286'-14748') Middlesex: 6924' MD Burkett: 7169' MD Tully: 7231' MD Marcellus POE: 7371' MD Projected MD at TD: 14773' MD</p>