

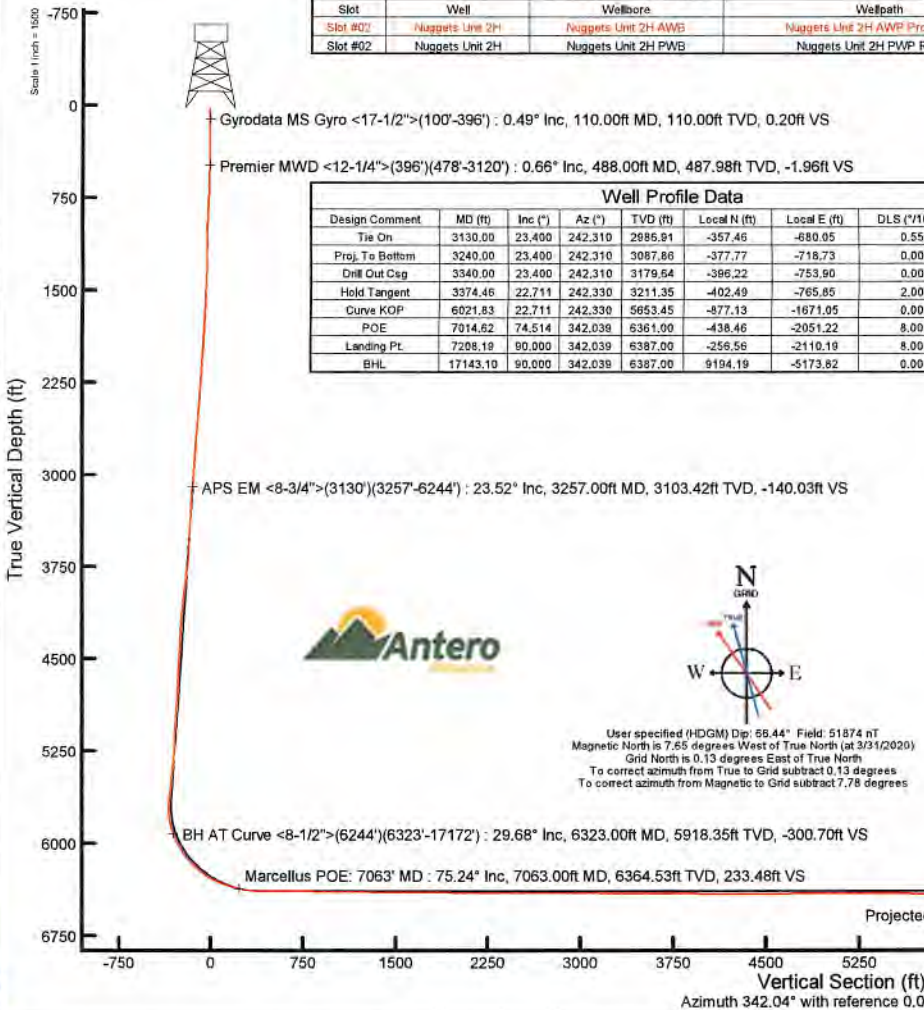
ANTERO RESOURCES CORPORATION

Location: Tyler County, WV Slot: Slot #02
 Field: Tyler Well: Nuggets Unit 2H
 Facility: Colorado West Pad Wellbore: Nuggets Unit 2H PWB

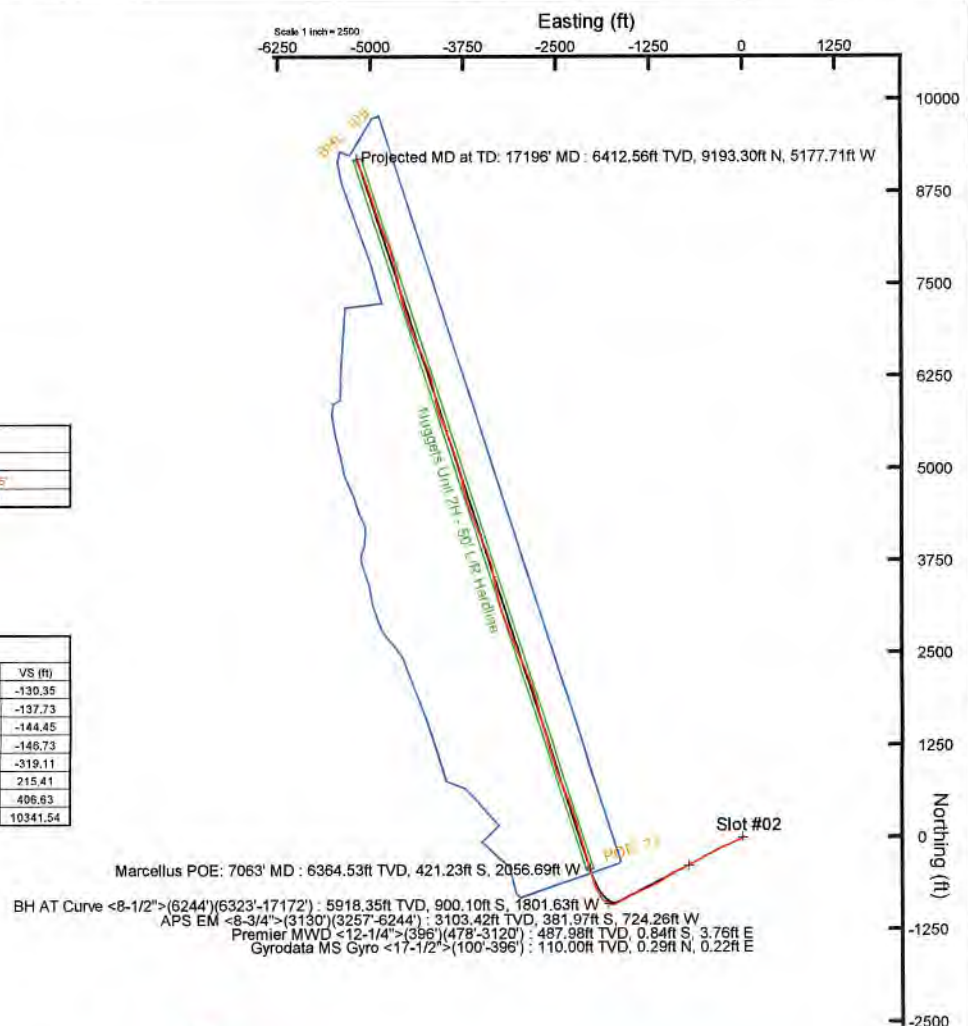
Plot reference wellbore is Nuggets Unit 2H PWB Rev-A.0	Grid System: NAD2011 UTM Zone 17 North, US feet
True vertical depths are referenced to Patterson 342 (RKB)	North Reference: Grid north
Reference wellbore measured depths are referenced to Patterson 342 (RKB)	Scale: True distance
Patterson 342 (RKB) to Mean Sea Level: 773.5 feet	Coordinates are in feet referenced to Slot
Mean Sea Level to Ground level (At Slot: Slot #02): -748.5 feet	Depths are in feet
Other wellbore MDs are referenced to each path's output MD datum	Created by: rmlscc on 2020-04-06 Database: WA_MPL_Elements_Dat

Location Information					
Facility Name	Grid East (US ft)	Grid North (US ft)	Latitude	Longitude	
Colorado West Pad	1699843.950	14308473.940	39°24'8.1990"N	80°47'22.6560"W	
Slot	Local N (ft)	Local E (ft)	Grid East (US ft)	Grid North (US ft)	Longitude
Slot #02	21.62	-55.94	1699788.030	14308495.550	39°24'8.4140"N 80°47'23.3680"W
Patterson 342 (RKB) to Ground level (At Slot: Slot #02)			25ft		
Mean Sea Level to Ground level (At Slot: Slot #02)			-748.5ft		
Patterson 342 (RKB) to Mean Sea Level			773.5ft		

Well Data			
Slot	Well	Wellbore	Wellpath
Slot #02	Nuggets Unit 2H	Nuggets Unit 2H AWP	Nuggets Unit 2H AWP (Proj: 17196)
Slot #02	Nuggets Unit 2H	Nuggets Unit 2H PWB	Nuggets Unit 2H PWB Rev-A.0



Well Profile Data							
Design Comment	MD (ft)	Inc (°)	Az (°)	TVD (ft)	Local N (ft)	Local E (ft)	VS (ft)
Tie On	3130.00	23.400	242.310	2885.81	-357.46	-680.05	-130.35
Proj. To Bottom	3240.00	23.400	242.310	3087.86	-377.77	-718.73	-137.73
Drill Out Csg	3340.00	23.400	242.310	3179.54	-386.22	-753.90	-144.45
Hold Tangent	3374.46	22.711	242.330	3211.35	-402.49	-765.85	-146.73
Curve KOP	6021.83	22.711	242.330	5653.45	-877.13	-1671.05	-319.11
POE	7014.62	74.514	342.039	6361.90	-438.46	-2051.22	215.41
Landing Pt.	7208.19	90.000	342.039	6387.00	-256.56	-2110.19	8.00
BHL	17143.10	90.000	342.039	6387.00	9194.19	-5173.82	0.00



User specified (HDGM) Dip: 88.44° Field: 51874 nT
 Magnetic North is 7.65 degrees West of True North (at 3/31/2020)
 Grid North is 0.13 degrees East of True North
 To correct azimuth from True to Grid subtract 0.13 degrees
 To correct azimuth from Magnetic to Grid subtract 7.78 degrees



API: 47-095-02657-0000
 BHI Job #: 110345906A
 Rig: Patterson 342
 Duration: 04/02/2020-04/05/2020



Actual Wellpath Report

Nuggets Unit 2H AWP Proj: 17196'

Page 1 of 11



REFERENCE WELLPATH IDENTIFICATION			
Operator	ANTERO RESOURCES CORPORATION	Well	Nuggets Unit 2H
Field	Tyler	API	47-095-02657-0000
Facility	Colorado West Pad	Wellbore	Nuggets Unit 2H AWB
Slot	Slot #02		

REPORT SETUP INFORMATION			
Projection System	NAD27 / UTM Zone 17 North, US feet	Software System	WellArchitect® 6.0
North Reference	Grid	User	Delaset
Scale	0.999604	Report Generated	4/6/2020 at 6:39:34 PM
Convergence at slot	0.13° East	Database	WA_MPL_EasternUS_Defn

WELLPATH LOCATION						
	Local coordinates		Grid coordinates		Geographic coordinates	
	North[ft]	East[ft]	Easting[US ft]	Northing[US ft]	Latitude	Longitude
Slot Location	21.62	-55.94	1699788.03	14308495.55	39°24'8.4140"N	80°47'23.3680"W
Facility Reference Pt			1699843.95	14308473.94	39°24'8.1990"N	80°47'22.6560"W
Field Reference Pt			0.00	0.00	0°00'0.0000"	85°29'19.3013"W

WELLPATH DATUM			
Calculation method	Minimum curvature	Patterson 342 (RKB) to Facility Vertical Datum	773.50ft
Horizontal Reference Pt	Slot	Patterson 342 (RKB) to Mean Sea Level	773.50ft
Vertical Reference Pt	Patterson 342 (RKB)	Patterson 342 (RKB) to Ground Level at Slot (Slot #02)	25.00ft
MD Reference Pt	Patterson 342 (RKB)	Section Origin	N 0.00, E 0.00 ft
Field Vertical Reference	Mean Sea Level	Section Azimuth	342.04°



Actual Wellpath Report

Nuggets Unit 2H AWP Proj: 17196'
Page 2 of 11



REFERENCE WELLPATH IDENTIFICATION			
Operator	ANTERO RESOURCES CORPORATION	Well	Nuggets Unit 2H
Field	Tyler	API	47-095-02657-0000
Facility	Colorado West Pad	Wellbore	Nuggets Unit 2H AWB
Slot	Slot #02		

WELLPATH DATA (201 stations) † = interpolated, ‡ = extrapolated station																
MD (ft)	Inclination (°)	Azimuth (°)	TVD (ft)	Vert Sect (ft)	North (ft)	East (ft)	Grid East (US ft)	Grid North (US ft)	Latitude	Longitude	Closure Dist (ft)	Closure Dir (°)	DLS (ft/100ft)	Build Rate (ft/100ft)	Turn Rate (ft/100ft)	Comments
0.00	†	0.000	37.950	0.00	0.00	0.00	1699788.03	14308495.55	39°24'8.4140"N	80°47'23.3680"W	0.00	0.000	0.00	0.00	0.00	
25.00		0.000	37.950	25.00	0.00	0.00	1699788.03	14308495.55	39°24'8.4140"N	80°47'23.3680"W	0.00	0.000	0.00	0.00	0.00	
110.00		0.490	37.950	110.00	0.20	0.29	1699788.25	14308495.84	39°24'8.4168"N	80°47'23.3651"W	0.36	37.950	0.58	0.58	0.00	Gyrodata MS Gyro <17-1/2">(100'-396')
135.00		0.430	45.710	135.00	0.31	0.44	1699788.39	14308495.99	39°24'8.4183"N	80°47'23.3634"W	0.56	39.238	0.35	-0.24	31.04	
160.00		0.460	61.550	160.00	0.37	0.55	1699788.54	14308496.10	39°24'8.4194"N	80°47'23.3614"W	0.75	42.954	0.50	0.12	63.36	
185.00		0.590	87.470	185.00	0.35	0.60	1699788.76	14308496.15	39°24'8.4199"N	80°47'23.3587"W	0.95	50.379	1.07	0.52	103.68	
210.00		0.580	100.540	210.00	0.25	0.59	1699789.01	14308496.14	39°24'8.4197"N	80°47'23.3554"W	1.14	59.174	0.53	-0.04	52.28	
235.00		0.570	111.590	234.99	0.11	0.52	1699789.25	14308496.07	39°24'8.4190"N	80°47'23.3524"W	1.33	67.068	0.44	-0.04	44.20	
260.00		0.690	104.940	259.99	-0.05	0.43	1699789.51	14308495.98	39°24'8.4182"N	80°47'23.3491"W	1.54	73.746	0.56	0.48	-26.60	
285.00		0.680	109.830	284.99	-0.22	0.34	1699789.80	14308495.89	39°24'8.4173"N	80°47'23.3454"W	1.80	79.014	0.24	-0.04	19.56	
310.00		0.760	112.910	309.99	-0.42	0.23	1699790.09	14308495.78	39°24'8.4162"N	80°47'23.3417"W	2.07	83.676	0.36	0.32	12.32	
335.00		0.600	108.760	334.99	-0.60	0.12	1699790.37	14308495.67	39°24'8.4151"N	80°47'23.3382"W	2.34	87.020	0.67	-0.64	-16.60	
360.00		0.560	115.580	359.99	-0.77	0.03	1699790.60	14308495.58	39°24'8.4142"N	80°47'23.3352"W	2.57	89.403	0.32	-0.16	27.28	
385.00		0.660	121.530	384.98	-0.96	-0.10	1699790.83	14308495.45	39°24'8.4129"N	80°47'23.3323"W	2.81	92.068	0.47	0.40	23.80	
406.00		0.690	124.180	405.98	-1.15	-0.24	1699791.04	14308495.31	39°24'8.4116"N	80°47'23.3296"W	3.02	94.472	0.21	0.14	12.62	
488.00		0.660	134.100	487.98	-1.96	-0.84	1699791.79	14308494.71	39°24'8.4056"N	80°47'23.3201"W	3.85	102.619	0.15	-0.04	12.10	Premier MWD <12-1/4">(396')(478'-3120')
580.00		1.060	165.970	579.97	-3.28	-2.04	1699792.37	14308493.51	39°24'8.3937"N	80°47'23.3127"W	4.80	115.102	0.66	0.43	34.64	
672.00		2.160	190.580	671.93	-5.65	-4.57	1699792.26	14308490.99	39°24'8.3687"N	80°47'23.3142"W	6.23	137.161	1.39	1.20	26.75	
764.00		3.570	206.560	763.81	-9.21	-8.83	1699790.66	14308486.72	39°24'8.3266"N	80°47'23.3347"W	9.22	163.391	1.75	1.53	17.37	
856.00		4.990	221.680	855.56	-13.28	-14.38	1699786.72	14308481.17	39°24'8.2718"N	80°47'23.3850"W	14.44	185.192	1.96	1.54	16.43	
952.00		6.640	231.570	951.06	-17.33	-20.95	1699779.60	14308474.61	39°24'8.2071"N	80°47'23.4760"W	22.59	201.922	2.00	1.72	10.30	
1047.00		8.030	240.130	1045.29	-20.62	-27.67	1699769.55	14308467.89	39°24'8.1409"N	80°47'23.6043"W	33.28	213.750	1.86	1.46	9.01	
1142.00		10.470	249.780	1139.05	-22.33	-33.96	1699755.70	14308461.60	39°24'8.0791"N	80°47'23.7810"W	46.90	223.605	3.03	2.57	10.16	
1237.00		13.630	247.330	1231.95	-23.59	-41.26	1699737.27	14308454.31	39°24'8.0073"N	80°47'24.0161"W	65.43	230.905	3.37	3.33	-2.58	
1331.00		15.860	244.630	1322.84	-26.16	-51.03	1699715.45	14308444.54	39°24'7.9112"N	80°47'24.2944"W	88.75	234.898	2.48	2.37	-2.87	
1426.00		17.620	244.890	1413.82	-29.62	-62.70	1699690.71	14308432.88	39°24'7.7965"N	80°47'24.6101"W	115.80	237.219	1.85	1.85	0.27	
1520.00		19.140	246.020	1503.02	-33.01	-75.00	1699663.76	14308420.58	39°24'7.6756"N	80°47'24.9539"W	145.19	238.899	1.66	1.62	1.20	
1615.00		20.420	247.410	1592.41	-35.98	-87.70	1699634.24	14308407.89	39°24'7.5508"N	80°47'25.3305"W	177.09	240.318	1.44	1.35	1.46	
1710.00		21.490	246.090	1681.13	-39.12	-101.11	1699603.04	14308394.48	39°24'7.4188"N	80°47'25.7285"W	210.89	241.349	1.23	1.13	-1.39	
1804.00		23.180	245.950	1768.07	-42.87	-115.63	1699570.41	14308379.96	39°24'7.2761"N	80°47'26.1447"W	246.51	242.025	1.80	1.80	-0.15	



Actual Wellpath Report

Nuggets Unit 2H AWP Proj: 17196'
Page 3 of 11



REFERENCE WELLPATH IDENTIFICATION			
Operator	ANTERO RESOURCES CORPORATION	Well	Nuggets Unit 2H
Field	Tyler	API	47-095-02657-0000
Facility	Colorado West Pad	Wellbore	Nuggets Unit 2H AWB
Slot	Slot #02		

WELLPATH DATA (201 stations)																
MD (ft)	Inclination (°)	Azimuth (°)	TVD (ft)	Vert Sect (ft)	North (ft)	East (ft)	Grid East (US ft)	Grid North (US ft)	Latitude	Longitude	Closure Dist (ft)	Closure Dir (°)	DLS (°/100ft)	Build Rate (°/100ft)	Turn Rate (°/100ft)	Comments
1899.00	23.930	246.710	1855.16	-46.64	-130.87	-252.47	1699535.66	14308364.73	39°24'7.1263"N	80°47'26.5881"W	284.38	242.600	0.85	0.79	0.80	
1994.00	23.100	245.110	1942.27	-50.68	-146.33	-287.08	1699501.07	14308349.28	39°24'6.9743"N	80°47'27.0293"W	322.22	242.990	1.10	-0.87	-1.68	
2089.00	22.520	243.350	2029.84	-55.68	-162.34	-320.24	1699467.91	14308333.28	39°24'6.8168"N	80°47'27.4523"W	359.04	243.119	0.94	-0.61	-1.85	
2184.00	23.160	242.620	2117.39	-61.49	-179.09	-353.09	1699435.08	14308316.53	39°24'6.6520"N	80°47'27.8713"W	395.91	243.106	0.74	0.67	-0.77	
2279.00	22.610	242.110	2204.91	-67.69	-196.22	-385.82	1699402.36	14308299.41	39°24'6.4834"N	80°47'28.2887"W	432.85	243.043	0.62	-0.58	-0.54	
2373.00	22.300	240.770	2291.78	-74.29	-213.38	-417.36	1699370.84	14308282.25	39°24'6.3145"N	80°47'28.6909"W	468.74	242.920	0.64	-0.33	-1.43	
2468.00	22.320	241.200	2379.67	-81.21	-230.88	-448.89	1699339.32	14308264.77	39°24'6.1424"N	80°47'29.0932"W	504.79	242.782	0.17	0.02	0.45	
2563.00	24.370	241.990	2466.89	-88.02	-248.77	-482.01	1699306.21	14308246.88	39°24'5.9662"N	80°47'29.5156"W	542.42	242.701	2.18	2.16	0.83	
2657.00	23.860	239.600	2552.69	-95.50	-267.50	-515.53	1699272.71	14308228.15	39°24'5.7819"N	80°47'29.9431"W	580.80	242.576	1.17	-0.54	-2.54	
2752.00	22.880	239.380	2639.90	-103.69	-286.63	-548.00	1699240.25	14308209.03	39°24'5.5936"N	80°47'30.3573"W	618.43	242.388	1.04	-1.03	-0.23	
2847.00	23.310	241.260	2727.28	-111.25	-305.08	-580.37	1699207.89	14308190.59	39°24'5.4120"N	80°47'30.7702"W	655.67	242.271	0.90	0.45	1.98	
2941.00	23.160	242.000	2813.66	-117.95	-322.70	-613.00	1699175.28	14308172.98	39°24'5.2386"N	80°47'31.1864"W	692.75	242.237	0.35	-0.16	0.79	
3036.00	23.830	243.020	2900.78	-124.22	-340.18	-646.60	1699141.69	14308155.51	39°24'5.0666"N	80°47'31.6149"W	730.62	242.251	0.82	0.71	1.07	
3130.00	23.400	242.310	2986.91	-130.35	-357.46	-680.05	1699108.25	14308138.23	39°24'4.8965"N	80°47'32.0415"W	768.27	242.272	0.55	-0.46	-0.76	
3257.00	23.520	239.690	3103.42	-140.03	-381.97	-724.26	1699064.06	14308113.73	39°24'4.6553"N	80°47'32.6054"W	818.81	242.193	0.83	0.09	-2.06	APS EM <8-3/4">(3130)(3257-6244)
3304.00	23.620	238.680	3146.50	-144.22	-391.60	-740.40	1699047.93	14308104.11	39°24'4.5605"N	80°47'32.8113"W	837.58	242.125	0.89	0.21	-2.15	
3399.00	22.820	242.760	3233.80	-151.58	-409.93	-773.04	1699015.30	14308085.79	39°24'4.3801"N	80°47'33.2276"W	875.00	242.064	1.89	-0.84	4.29	
3493.00	23.100	247.230	3320.36	-156.07	-425.41	-806.25	1698982.10	14308070.31	39°24'4.2279"N	80°47'33.6511"W	911.60	242.182	1.88	0.30	4.76	
3588.00	22.130	242.420	3408.07	-160.62	-440.91	-839.30	1698949.07	14308054.82	39°24'4.0754"N	80°47'34.0726"W	948.06	242.286	2.20	-1.02	-5.06	
3683.00	23.270	246.460	3495.71	-165.44	-456.69	-872.36	1698916.01	14308039.04	39°24'3.9202"N	80°47'34.4943"W	984.67	242.368	2.03	1.20	4.25	
3778.00	25.070	246.350	3582.38	-169.26	-472.26	-908.01	1698880.38	14308023.48	39°24'3.7671"N	80°47'34.9488"W	1023.48	242.521	1.90	1.89	-0.12	
3873.00	23.860	241.680	3668.86	-174.71	-489.45	-943.36	1698845.04	14308006.30	39°24'3.5980"N	80°47'35.3997"W	1062.78	242.578	2.40	-1.27	-4.92	
3968.00	22.180	234.610	3756.31	-183.54	-508.96	-974.90	1698813.51	14307986.80	39°24'3.4059"N	80°47'35.8020"W	1099.76	242.433	3.40	-1.77	-7.44	
4065.00	22.450	234.130	3846.04	-194.72	-530.41	-1004.84	1698783.59	14307965.35	39°24'3.1946"N	80°47'36.1840"W	1136.24	242.172	0.34	0.28	-0.49	
4160.00	23.540	233.560	3933.49	-206.31	-552.31	-1034.80	1698753.64	14307943.46	39°24'2.9788"N	80°47'36.5663"W	1172.97	241.910	1.17	1.15	-0.60	
4254.00	22.430	236.040	4020.03	-217.21	-573.48	-1064.78	1698723.68	14307922.30	39°24'2.7703"N	80°47'36.9488"W	1209.39	241.694	1.57	-1.18	2.64	
4349.00	22.820	239.330	4107.72	-226.26	-593.00	-1095.66	1698692.81	14307902.79	39°24'2.5780"N	80°47'37.3427"W	1245.84	241.577	1.39	0.41	3.46	
4443.00	22.430	239.960	4194.49	-234.02	-611.28	-1126.86	1698661.62	14307884.52	39°24'2.3981"N	80°47'37.7407"W	1281.98	241.522	0.49	-0.41	0.67	
4537.00	23.430	245.470	4281.07	-239.91	-628.01	-1159.39	1698629.10	14307867.79	39°24'2.2334"N	80°47'38.1556"W	1318.56	241.557	2.52	1.06	5.86	
4632.00	22.850	247.290	4368.43	-243.60	-642.98	-1193.59	1698594.92	14307852.83	39°24'2.0863"N	80°47'38.5917"W	1355.76	241.689	0.97	-0.61	1.92	



Actual Wellpath Report

Nuggets Unit 2H AWP Proj: 17196'
Page 4 of 11



REFERENCE WELLPATH IDENTIFICATION			
Operator	ANTERO RESOURCES CORPORATION	Well	Nuggets Unit 2H
Field	Tyler	API	47-095-02657-0000
Facility	Colorado West Pad	Wellbore	Nuggets Unit 2H AWB
Slot	Slot #02		

WELLPATH DATA (201 stations) † = interpolated, ‡ = extrapolated station																
MD (ft)	Inclination (°)	Azimuth (°)	TVD (ft)	Vert Sect (ft)	North (ft)	East (ft)	Grid East (US ft)	Grid North (US ft)	Latitude	Longitude	Closure Dist (ft)	Closure Dir (°)	DLS (°/100ft)	Build Rate (°/100ft)	Turn Rate (°/100ft)	Comments
4727.00	22.330	241.440	4456.15	-248.45	-658.73	-1226.46	1698562.06	14307837.08	39°24'1.9313"N	80°47'39.0109"W	1392.17	241.760	2.43	-0.55	-6.16	
4822.00	21.000	243.010	4544.44	-254.44	-675.08	-1257.48	1698531.05	14307820.74	39°24'1.7704"N	80°47'39.4065"W	1427.23	241.771	1.53	-1.40	1.65	
4917.00	21.320	246.820	4633.04	-258.68	-689.61	-1288.53	1698500.02	14307806.22	39°24'1.6276"N	80°47'39.8024"W	1461.46	241.845	1.49	0.34	4.01	
5012.00	22.420	247.760	4721.20	-261.61	-703.26	-1321.17	1698467.38	14307792.57	39°24'1.4933"N	80°47'40.2187"W	1496.69	241.974	1.22	1.16	0.99	
5106.00	22.000	242.090	4808.23	-265.99	-718.29	-1353.33	1698435.24	14307777.55	39°24'1.3455"N	80°47'40.6287"W	1532.13	242.043	2.32	-0.45	-6.03	
5201.00	23.320	243.150	4895.90	-271.97	-735.11	-1385.83	1698402.75	14307760.73	39°24'1.1800"N	80°47'41.0432"W	1568.73	242.056	1.45	1.39	1.12	
5296.00	23.710	238.370	4983.02	-279.39	-753.62	-1418.87	1698369.72	14307742.23	39°24'0.9978"N	80°47'41.4647"W	1606.59	242.025	2.05	0.41	-5.03	
5393.00	23.370	245.580	5071.96	-286.16	-771.81	-1453.00	1698335.81	14307724.05	39°24'0.8188"N	80°47'41.8999"W	1645.27	242.024	2.99	-0.35	7.43	
5487.00	24.200	250.520	5157.99	-288.77	-785.94	-1488.14	1698300.48	14307709.92	39°24'0.6799"N	80°47'42.3480"W	1682.94	242.160	2.30	0.88	5.26	
5581.00	23.600	245.610	5243.94	-291.39	-800.14	-1523.45	1698265.19	14307695.73	39°24'0.5404"N	80°47'42.7982"W	1720.79	242.291	2.21	-0.64	-5.22	
5676.00	23.360	237.890	5331.09	-298.13	-818.01	-1556.73	1698231.92	14307677.87	39°24'0.3645"N	80°47'43.2226"W	1758.56	242.280	3.25	-0.25	-8.13	
5771.00	22.290	235.500	5418.65	-307.86	-838.22	-1587.53	1698201.13	14307657.66	39°24'0.1654"N	80°47'43.6156"W	1795.24	242.166	1.49	-1.13	-2.52	
5865.00	23.750	243.500	5505.19	-315.75	-856.77	-1619.17	1698169.50	14307639.12	39°23'59.9828"N	80°47'44.0192"W	1831.88	242.115	3.67	1.55	8.51	
5959.00	24.050	234.410	5591.15	-324.36	-876.37	-1651.70	1698136.99	14307619.53	39°23'59.7898"N	80°47'44.4341"W	1869.80	242.050	3.93	0.32	-9.67	
6054.00	24.350	242.630	5677.83	-333.43	-896.65	-1684.84	1698103.86	14307599.26	39°23'59.5901"N	80°47'44.8569"W	1908.58	241.979	3.56	0.32	8.65	
6149.00	25.490	261.800	5764.13	-333.17	-908.59	-1722.53	1698066.18	14307587.32	39°23'59.4730"N	80°47'45.3373"W	1947.47	242.190	8.55	1.20	20.18	
6244.00	28.010	275.520	5849.03	-320.80	-909.36	-1765.02	1698023.72	14307586.55	39°23'59.4663"N	80°47'45.8785"W	1985.50	242.742	7.00	2.65	14.44	
6323.00	29.680	292.410	5918.35	-300.70	-900.10	-1801.63	1697987.12	14307595.81	39°23'59.5586"N	80°47'46.3446"W	2013.96	243.453	10.50	2.11	21.38	BH AT Curve <8-1/2">(6244')(6323'-17172')
6380.00	31.790	301.640	5967.37	-280.12	-886.84	-1827.47	1697961.28	14307609.07	39°23'59.6903"N	80°47'46.6735"W	2031.29	244.114	9.06	3.70	16.19	
6474.00	34.320	316.420	6046.27	-237.29	-854.59	-1866.89	1697921.88	14307641.30	39°24'0.0099"N	80°47'47.1747"W	2053.20	245.403	8.97	2.69	15.72	
6569.00	39.770	326.280	6122.14	-183.81	-809.85	-1902.28	1697886.51	14307686.03	39°24'0.4529"N	80°47'47.6242"W	2067.49	246.939	8.47	5.74	10.38	
6611.00†	43.385	328.697	6153.55	-156.83	-786.34	-1917.24	1697871.55	14307709.53	39°24'0.6856"N	80°47'47.8141"W	2072.23	247.699	9.42	8.61	5.75	Middlesex: 6611' MD
6664.00	48.010	331.320	6190.56	-119.75	-753.48	-1936.16	1697852.64	14307742.37	39°24'1.0107"N	80°47'48.0542"W	2077.61	248.736	9.42	8.73	4.95	
6758.00	56.370	335.460	6248.16	-46.40	-687.10	-1969.25	1697819.57	14307808.72	39°24'1.6676"N	80°47'48.4737"W	2085.68	250.765	9.55	8.89	4.40	
6843.00†	62.946	340.174	6291.09	26.70	-619.20	-1996.82	1697792.00	14307876.59	39°24'2.3393"N	80°47'48.8231"W	2090.63	252.772	9.09	7.74	5.55	Burkett: 6843' MD
6853.00	63.730	340.690	6295.58	35.63	-610.78	-1999.82	1697789.01	14307885.01	39°24'2.4225"N	80°47'48.8609"W	2091.01	253.016	9.09	7.84	5.16	
6909.00†	68.001	342.466	6318.47	86.72	-562.30	-2015.95	1697772.88	14307933.47	39°24'2.9020"N	80°47'49.0651"W	2092.90	254.415	8.16	7.63	3.17	Tully: 6909' MD
6947.00	70.910	343.610	6331.80	122.29	-528.27	-2026.33	1697762.51	14307967.49	39°24'3.2386"N	80°47'49.1963"W	2094.05	255.388	8.16	7.65	3.01	
6991.00†	74.057	344.443	6345.05	164.22	-487.94	-2037.87	1697750.97	14308007.81	39°24'3.6375"N	80°47'49.3422"W	2095.47	256.535	7.38	7.15	1.89	Hamilton: 6991' MD
6993.00	74.200	344.480	6345.59	166.14	-486.08	-2038.38	1697750.46	14308009.66	39°24'3.6558"N	80°47'49.3487"W	2095.54	256.587	7.38	7.16	1.86	



Actual Wellpath Report

Nuggets Unit 2H AWP Proj: 17196'
Page 5 of 11



REFERENCE WELLPATH IDENTIFICATION			
Operator	ANTERO RESOURCES CORPORATION	Well	Nuggets Unit 2H
Field	Tyler	API	47-095-02657-0000
Facility	Colorado West Pad	Wellbore	Nuggets Unit 2H AWB
Slot	Slot #02		

WELLPATH DATA (201 stations) † = interpolated, ‡ = extrapolated station																	
MD	Inclination	Azimuth	TVD	Vert Sect	North	East	Grid East	Grid North	Latitude	Longitude	Closure Dist	Closure Dir	DLS	Build Rate	Turn Rate	Comments	
(ft)	(°)	(°)	(ft)	(ft)	(ft)	(ft)	(US ft)	(US ft)			(ft)	(°)	(°/100ft)	(°/100ft)	(°/100ft)		
7042.00	74.100	344.060	6358.98	213.24	-440.71	-2051.16	1697737.68	14308055.01	39°24'4.1046"N	80°47'49.5102"W	2097.97	257.874	0.85	-0.20	-0.86		
7063.00†	75.239	344.271	6364.53	233.48	-421.23	-2056.69	1697732.16	14308074.49	39°24'4.2972"N	80°47'49.5800"W	2099.38	258.425	5.51	5.42	1.01	Marcellus POE: 7063' MD	
7089.00	76.650	344.530	6370.84	258.68	-396.94	-2063.47	1697725.38	14308098.77	39°24'4.5375"N	80°47'49.6657"W	2101.30	259.111	5.51	5.43	0.99		
7136.00	80.200	343.920	6380.27	304.69	-352.63	-2075.99	1697712.87	14308143.06	39°24'4.9756"N	80°47'49.8239"W	2105.72	260.360	7.66	7.55	-1.30		
7231.00	90.030	343.640	6388.35	399.18	-261.86	-2102.40	1697686.47	14308233.79	39°24'5.8734"N	80°47'50.1577"W	2118.64	262.900	10.35	10.35	-0.29		
7326.00	89.660	343.640	6388.61	494.14	-170.71	-2129.15	1697659.72	14308324.91	39°24'6.7749"N	80°47'50.4960"W	2135.99	265.416	0.39	-0.39	0.00		
7420.00	89.570	343.040	6389.24	588.12	-80.65	-2156.10	1697632.78	14308414.93	39°24'7.6655"N	80°47'50.8367"W	2157.61	267.858	0.65	-0.10	-0.64		
7515.00	89.480	343.840	6390.03	683.08	10.40	-2183.18	1697605.72	14308505.95	39°24'8.5661"N	80°47'51.1790"W	2183.20	270.273	0.85	-0.09	0.84		
7609.00	89.480	344.810	6390.88	777.00	100.90	-2208.57	1697580.33	14308596.41	39°24'9.4611"N	80°47'51.4999"W	2210.88	272.616	1.03	0.00	1.03		
7703.00	89.540	343.670	6391.68	870.93	191.36	-2234.10	1697554.81	14308686.84	39°24'10.3557"N	80°47'51.8226"W	2242.28	274.896	1.21	0.06	-1.21		
7798.00	89.230	343.100	6392.70	965.90	282.39	-2261.27	1697527.66	14308777.83	39°24'11.2560"N	80°47'52.1660"W	2278.83	277.118	0.68	-0.33	-0.60		
7892.00	89.110	340.450	6394.07	1059.88	371.66	-2290.66	1697498.28	14308867.06	39°24'12.1389"N	80°47'52.5379"W	2320.61	279.216	2.82	-0.13	-2.82		
7987.00	89.850	338.240	6394.93	1154.76	460.54	-2324.17	1697464.79	14308955.91	39°24'13.0182"N	80°47'52.9622"W	2369.36	281.208	2.45	0.78	-2.33		
8082.00	89.140	337.990	6395.76	1249.54	548.69	-2359.58	1697429.39	14309044.02	39°24'13.8902"N	80°47'53.4108"W	2422.53	283.091	0.79	-0.75	-0.26		
8177.00	89.630	337.290	6396.78	1344.25	636.54	-2395.71	1697393.27	14309131.84	39°24'14.7592"N	80°47'53.8686"W	2478.84	284.880	0.90	0.52	-0.74		
8272.00	89.600	338.230	6397.42	1438.98	724.47	-2431.67	1697357.33	14309219.73	39°24'15.6291"N	80°47'54.3242"W	2537.30	286.590	0.99	-0.03	0.99		
8366.00	89.420	339.420	6398.23	1532.83	812.12	-2465.62	1697323.39	14309307.35	39°24'16.4961"N	80°47'54.7542"W	2595.92	288.231	1.28	-0.19	1.27		
8461.00	89.540	341.310	6399.09	1627.78	901.59	-2497.54	1697291.48	14309396.78	39°24'17.3811"N	80°47'55.1583"W	2655.29	289.849	1.99	0.13	1.99		
8556.00	89.480	341.070	6399.90	1722.77	991.51	-2528.17	1697260.87	14309486.67	39°24'18.2705"N	80°47'55.5459"W	2715.65	291.414	0.26	-0.06	-0.25		
8650.00	89.690	342.500	6400.58	1816.76	1080.80	-2557.55	1697231.50	14309575.92	39°24'19.1536"N	80°47'55.9177"W	2776.54	292.908	1.54	0.22	1.52		
8744.00	89.630	343.160	6401.14	1910.75	1170.60	-2585.30	1697203.76	14309665.69	39°24'20.0418"N	80°47'56.2687"W	2837.97	294.361	0.71	-0.06	0.70		
8839.00	89.850	344.240	6401.57	2005.71	1261.78	-2611.96	1697177.11	14309756.83	39°24'20.9436"N	80°47'56.6057"W	2900.77	295.784	1.16	0.23	1.14		
8933.00	89.720	343.250	6401.92	2099.66	1352.02	-2638.27	1697150.81	14309847.04	39°24'21.8361"N	80°47'56.9384"W	2964.53	297.134	1.06	-0.14	-1.05		
9028.00	89.780	342.030	6402.34	2194.65	1442.69	-2666.62	1697122.47	14309937.67	39°24'22.7328"N	80°47'57.2969"W	3031.87	298.414	1.29	0.06	-1.28		
9122.00	89.820	343.900	6402.67	2288.64	1532.57	-2694.16	1697094.95	14310027.51	39°24'23.6217"N	80°47'57.6452"W	3099.55	299.633	1.99	0.04	1.99		
9217.00	90.090	346.710	6402.74	2383.47	1624.45	-2718.25	1697070.86	14310119.35	39°24'24.5303"N	80°47'57.9496"W	3166.66	300.863	2.97	0.28	2.96		
9312.00	89.910	346.800	6402.74	2478.15	1716.92	-2740.02	1697049.10	14310211.79	39°24'25.4448"N	80°47'58.2242"W	3233.50	302.072	0.21	-0.19	0.09		
9407.00	89.820	345.730	6402.97	2572.89	1809.20	-2762.57	1697026.56	14310304.03	39°24'26.3573"N	80°47'58.5090"W	3302.28	303.221	1.13	-0.09	-1.13		
9501.00	89.940	343.720	6403.16	2666.78	1899.88	-2787.34	1697001.80	14310394.67	39°24'27.2540"N	80°47'58.8219"W	3373.25	304.279	2.14	0.13	-2.14		
9595.00	89.510	342.220	6403.61	2760.77	1989.75	-2814.87	1696974.28	14310484.51	39°24'28.1429"N	80°47'59.1701"W	3447.11	305.255	1.66	-0.46	-1.60		



Actual Wellpath Report

Nuggets Unit 2H AWP Proj: 17196'
Page 6 of 11



REFERENCE WELLPATH IDENTIFICATION			
Operator	ANTERO RESOURCES CORPORATION	Well	Nuggets Unit 2H
Field	Tyler	API	47-095-02657-0000
Facility	Colorado West Pad	Wellbore	Nuggets Unit 2H AWB
Slot	Slot #02		

WELLPATH DATA (201 stations)																
MD (ft)	Inclination (°)	Azimuth (°)	TVD (ft)	Vert Sect (ft)	North (ft)	East (ft)	Grid East (US ft)	Grid North (US ft)	Latitude	Longitude	Closure Dist (ft)	Closure Dir (°)	DLS (°/100ft)	Build Rate (°/100ft)	Turn Rate (°/100ft)	Comments
9690.00	89.660	340.440	6404.30	2855.75	2079.75	-2845.28	1696943.89	14310574.47	39°24'29.0331"N	80°47'59.5549"W	3524.34	306.165	1.88	0.16	-1.87	
9784.00	89.820	339.330	6404.73	2949.69	2168.01	-2877.60	1696911.57	14310662.70	39°24'29.9061"N	80°47'59.9643"W	3602.90	306.995	1.19	0.17	-1.18	
9879.00	89.540	337.920	6405.26	3044.51	2256.47	-2912.22	1696876.96	14310751.12	39°24'30.7812"N	80°48'0.4029"W	3684.12	307.770	1.51	-0.29	-1.48	
9974.00	89.380	336.790	6406.15	3139.19	2344.14	-2948.80	1696840.40	14310838.76	39°24'31.6485"N	80°48'0.8664"W	3767.02	308.483	1.20	-0.17	-1.19	
10068.00	89.570	336.620	6407.02	3232.78	2430.48	-2985.97	1696803.25	14310925.06	39°24'32.5026"N	80°48'1.3375"W	3850.10	309.144	0.27	0.20	-0.18	
10163.00	89.510	336.680	6407.78	3327.35	2517.69	-3023.62	1696765.61	14311012.24	39°24'33.3654"N	80°48'1.8147"W	3934.60	309.783	0.09	-0.06	0.06	
10257.00	89.940	337.430	6408.23	3421.00	2604.25	-3060.27	1696728.98	14311098.77	39°24'34.2217"N	80°48'2.2792"W	4018.38	310.397	0.92	0.46	0.80	
10352.00	89.540	338.940	6408.66	3515.78	2692.45	-3095.57	1696693.69	14311186.93	39°24'35.0942"N	80°48'2.7264"W	4102.66	311.016	1.64	-0.42	1.59	
10447.00	89.780	339.830	6409.22	3610.67	2781.36	-3129.02	1696660.26	14311275.81	39°24'35.9737"N	80°48'3.1501"W	4186.49	311.634	0.97	0.25	0.94	
10541.00	89.570	338.840	6409.76	3704.57	2869.31	-3162.19	1696627.10	14311363.72	39°24'36.8436"N	80°48'3.5702"W	4269.94	312.220	1.08	-0.22	-1.05	
10636.00	89.720	340.200	6410.35	3799.47	2958.30	-3195.43	1696593.88	14311452.68	39°24'37.7239"N	80°48'3.9912"W	4354.57	312.793	1.44	0.16	1.43	
10731.00	89.630	339.970	6410.88	3894.41	3047.62	-3227.78	1696561.53	14311541.96	39°24'38.6074"N	80°48'4.4009"W	4439.21	313.356	0.26	-0.09	-0.24	
10826.00	89.510	343.150	6411.60	3989.40	3137.73	-3257.83	1696531.50	14311632.03	39°24'39.4986"N	80°48'4.7812"W	4523.14	313.924	3.35	-0.13	3.35	
10921.00	89.540	346.950	6412.39	4084.24	3229.49	-3282.33	1696507.00	14311723.76	39°24'40.4061"N	80°48'5.0908"W	4604.71	314.535	4.00	0.03	4.00	
11015.00	90.150	349.300	6412.64	4177.71	3321.47	-3301.67	1696487.67	14311815.70	39°24'41.3156"N	80°48'5.3346"W	4683.29	315.171	2.58	0.65	2.50	
11110.00	90.180	350.370	6412.37	4271.83	3414.98	-3318.44	1696470.91	14311909.17	39°24'42.2402"N	80°48'5.5456"W	4761.74	315.821	1.13	0.03	1.13	
11205.00	90.030	349.110	6412.19	4365.97	3508.46	-3335.36	1696454.00	14312002.61	39°24'43.1644"N	80°48'5.7586"W	4840.86	316.449	1.34	-0.16	-1.33	
11300.00	90.090	347.060	6412.09	4460.44	3601.41	-3354.97	1696434.39	14312095.53	39°24'44.0835"N	80°48'6.0058"W	4921.99	317.029	2.16	0.06	-2.16	
11394.00	90.180	344.880	6411.87	4554.21	3692.60	-3377.76	1696411.61	14312186.68	39°24'44.9853"N	80°48'6.2936"W	5004.45	317.550	2.32	0.10	-2.32	
11489.00	90.220	342.700	6411.54	4649.16	3783.82	-3404.28	1696385.11	14312277.86	39°24'45.8874"N	80°48'6.6289"W	5089.83	318.022	2.30	0.04	-2.29	
11583.00	90.030	339.610	6411.33	4743.13	3872.77	-3434.64	1696354.76	14312366.78	39°24'46.7672"N	80°48'7.0132"W	5176.39	318.431	3.29	-0.20	-3.29	
11678.00	90.090	336.450	6411.23	4837.89	3960.86	-3470.17	1696319.24	14312454.83	39°24'47.6386"N	80°48'7.4635"W	5265.97	318.778	3.33	0.06	-3.33	
11772.00	89.970	338.990	6411.19	4931.62	4047.83	-3505.81	1696283.62	14312541.77	39°24'48.4990"N	80°48'7.9151"W	5354.96	319.104	2.71	-0.13	2.70	
11867.00	90.310	336.190	6410.95	5026.32	4135.65	-3542.02	1696247.42	14312629.55	39°24'49.3677"N	80°48'8.3741"W	5445.14	319.421	2.97	0.36	-2.95	
11962.00	89.940	337.160	6410.75	5120.90	4222.88	-3579.64	1696209.82	14312716.75	39°24'50.2307"N	80°48'8.8509"W	5535.93	319.713	1.09	-0.39	1.02	
12056.00	89.880	337.570	6410.89	5214.59	4309.64	-3615.81	1696173.66	14312803.48	39°24'51.0890"N	80°48'9.3094"W	5625.58	320.003	0.44	-0.06	0.44	
12151.00	90.090	337.700	6410.92	5309.31	4397.50	-3651.96	1696137.52	14312891.30	39°24'51.9581"N	80°48'9.7675"W	5716.19	320.292	0.26	0.22	0.14	
12246.00	89.850	341.100	6410.97	5404.19	4486.41	-3685.38	1696104.11	14312980.17	39°24'52.8376"N	80°48'10.1909"W	5806.02	320.598	3.59	-0.25	3.58	
12340.00	90.090	346.050	6411.02	5498.13	4576.54	-3711.95	1696077.55	14313070.27	39°24'53.7290"N	80°48'10.5269"W	5892.65	320.955	5.27	0.26	5.27	
12434.00	89.820	348.120	6411.09	5591.76	4668.16	-3732.96	1696056.55	14313161.85	39°24'54.6349"N	80°48'10.7920"W	5977.18	321.352	2.22	-0.29	2.20	



Actual Wellpath Report

Nuggets Unit 2H AWP Proj: 17196'
Page 7 of 11



REFERENCE WELLPATH IDENTIFICATION			
Operator	ANTERO RESOURCES CORPORATION	Well	Nuggets Unit 2H
Field	Tyler	API	47-095-02657-0000
Facility	Colorado West Pad	Wellbore	Nuggets Unit 2H AWB
Slot	Slot #02		

WELLPATH DATA (201 stations)																
MD (ft)	Inclination (°)	Azimuth (°)	TVD (ft)	Vert Sect (ft)	North (ft)	East (ft)	Grid East (US ft)	Grid North (US ft)	Latitude	Longitude	Closure Dist (ft)	Closure Dir (°)	DLS (°/100ft)	Build Rate (°/100ft)	Turn Rate (°/100ft)	Comments
12529.00	89.780	347.600	6411.42	5886.27	4761.04	-3752.94	1696036.58	14313254.69	39°24'55.5533"N	80°48'11.0440"W	6062.34	321.753	0.55	-0.04	-0.55	
12624.00	90.150	350.750	6411.48	5780.52	4854.33	-3770.78	1696018.75	14313347.95	39°24'56.4758"N	80°48'11.2687"W	6146.81	322.160	3.34	0.39	3.32	
12718.00	89.880	345.780	6411.46	5873.94	4946.34	-3789.89	1695999.65	14313439.92	39°24'57.3855"N	80°48'11.5097"W	6231.34	322.541	5.30	-0.29	-5.29	
12813.00	90.340	342.450	6411.27	5968.86	5037.70	-3815.89	1695973.66	14313531.24	39°24'58.2890"N	80°48'11.8384"W	6319.76	322.857	3.54	0.48	-3.51	
12907.00	89.850	342.010	6411.12	6062.86	5127.21	-3844.58	1695944.98	14313620.72	39°24'59.1744"N	80°48'12.2014"W	6408.52	323.136	0.70	-0.52	-0.47	
13002.00	89.880	340.990	6411.34	6157.86	5217.30	-3874.72	1695914.85	14313710.78	39°25'0.0654"N	80°48'12.5830"W	6498.75	323.400	1.07	0.03	-1.07	
13097.00	90.030	339.890	6411.42	6252.82	5306.82	-3906.53	1695883.06	14313800.26	39°25'0.9508"N	80°48'12.9858"W	6589.63	323.642	1.17	0.16	-1.16	
13192.00	90.120	340.260	6411.29	6347.76	5396.13	-3938.90	1695850.70	14313889.53	39°25'1.8343"N	80°48'13.3958"W	6680.81	323.872	0.40	0.09	0.39	
13287.00	89.850	340.130	6411.32	6442.71	5485.51	-3971.09	1695818.52	14313978.88	39°25'2.7183"N	80°48'13.8034"W	6772.03	324.098	0.32	-0.28	-0.14	
13381.00	90.090	336.770	6411.37	6536.51	5572.93	-4005.61	1695784.01	14314066.26	39°25'3.5831"N	80°48'14.2409"W	6863.12	324.293	3.58	0.26	-3.57	
13475.00	89.750	337.110	6411.50	6630.14	5659.42	-4042.43	1695747.21	14314152.72	39°25'4.4387"N	80°48'14.7076"W	6954.87	324.462	0.51	-0.36	0.36	
13570.00	89.880	341.500	6411.80	6725.01	5748.27	-4075.99	1695713.66	14314241.53	39°25'5.3175"N	80°48'15.1328"W	7046.72	324.660	4.62	0.14	4.62	
13665.00	89.780	345.480	6412.09	6819.96	5839.33	-4102.99	1695686.68	14314332.56	39°25'6.2181"N	80°48'15.4742"W	7136.68	324.906	4.19	-0.11	4.19	
13759.00	89.750	349.210	6412.47	6913.54	5931.03	-4123.58	1695666.09	14314424.22	39°25'7.1249"N	80°48'15.7341"W	7223.64	325.191	3.97	-0.03	3.97	
13854.00	89.750	349.400	6412.89	7007.78	6024.38	-4141.21	1695648.47	14314517.53	39°25'8.0479"N	80°48'15.9561"W	7310.45	325.495	0.20	0.00	0.20	
13949.00	89.850	348.570	6413.22	7102.08	6117.63	-4159.36	1695630.33	14314610.74	39°25'8.9699"N	80°48'16.1848"W	7397.68	325.788	0.88	0.11	-0.87	
14043.00	90.030	344.410	6413.32	7195.77	6209.01	-4181.31	1695608.38	14314702.08	39°25'9.8735"N	80°48'16.4621"W	7485.66	326.043	4.43	0.19	-4.43	
14137.00	89.660	340.430	6413.57	7289.75	6298.60	-4209.70	1695580.01	14314791.64	39°25'10.7596"N	80°48'16.8213"W	7575.87	326.243	4.25	-0.39	-4.23	
14232.00	90.120	339.280	6413.75	7384.68	6387.78	-4242.42	1695547.30	14314880.79	39°25'11.6417"N	80°48'17.2357"W	7668.24	326.410	1.30	0.48	-1.21	
14326.00	90.370	338.500	6413.35	7478.54	6475.47	-4276.27	1695513.46	14314968.45	39°25'12.5091"N	80°48'17.6647"W	7760.04	326.560	0.87	0.27	-0.83	
14421.00	90.120	337.920	6412.95	7573.32	6563.68	-4311.53	1695478.21	14315056.62	39°25'13.3817"N	80°48'18.1116"W	7853.11	326.700	0.66	-0.26	-0.61	
14516.00	90.620	336.730	6412.33	7668.00	6651.34	-4348.15	1695441.61	14315144.24	39°25'14.2488"N	80°48'18.5758"W	7946.49	326.826	1.36	0.53	-1.25	
14611.00	90.250	334.780	6411.61	7762.42	6737.95	-4387.16	1695402.61	14315230.82	39°25'15.1057"N	80°48'19.0705"W	8040.35	326.931	2.09	-0.39	-2.06	
14705.00	90.280	336.510	6411.18	7855.83	6823.58	-4425.93	1695363.87	14315316.42	39°25'15.9529"N	80°48'19.5620"W	8133.27	327.032	1.84	0.03	1.84	
14799.00	90.220	340.320	6410.77	7949.62	6910.97	-4460.50	1695329.31	14315403.77	39°25'16.8173"N	80°48'20.0002"W	8225.42	327.161	4.05	-0.06	4.05	
14894.00	90.090	341.660	6410.51	8044.61	7000.79	-4491.44	1695298.37	14315493.55	39°25'17.7057"N	80°48'20.3920"W	8317.70	327.317	1.42	-0.14	1.41	
14989.00	90.250	342.860	6410.23	8139.60	7091.27	-4520.39	1695269.44	14315584.00	39°25'18.6006"N	80°48'20.7584"W	8409.52	327.484	1.27	0.17	1.26	
15084.00	90.220	344.390	6409.84	8234.56	7182.41	-4547.17	1695242.67	14315675.10	39°25'19.5019"N	80°48'21.0971"W	8500.81	327.662	1.61	-0.03	1.61	
15178.00	90.180	346.170	6409.51	8328.41	7273.32	-4571.05	1695218.79	14315765.98	39°25'20.4010"N	80°48'21.3990"W	8590.45	327.852	1.89	-0.04	1.89	
15273.00	89.940	347.870	6409.41	8423.05	7365.89	-4592.39	1695197.47	14315858.51	39°25'21.3183"N	80°48'21.6883"W	8680.23	328.058	1.81	-0.25	1.79	



Actual Wellpath Report

Nuggets Unit 2H AWP Proj: 17196'
Page 8 of 11



REFERENCE WELLPATH IDENTIFICATION			
Operator	ANTERO RESOURCES CORPORATION	Well	Nuggets Unit 2H
Field	Tyler	API	47-095-02657-0000
Facility	Colorado West Pad	Wellbore	Nuggets Unit 2H AWB
Slot	Slot #02		

WELLPATH DATA (201 stations) † = interpolated, ‡ = extrapolated station																
MD (ft)	Inclination (°)	Azimuth (°)	TVD (ft)	Vert Sect (ft)	North (ft)	East (ft)	Grid East (US ft)	Grid North (US ft)	Latitude	Longitude	Closure Dist (ft)	Closure Dir (°)	DLS (°/100ft)	Build Rate (°/100ft)	Turn Rate (°/100ft)	Comments
15367.00	89.940	349.080	6409.51	8516.45	7458.00	-4611.17	1695178.69	14315950.58	39°25'22.2270"N	80°48'21.9051"W	8768.39	328.272	1.29	0.00	1.29	
15461.00	89.850	348.290	6409.68	8609.82	7550.17	-4629.61	1695160.26	14316042.71	39°25'23.1384"N	80°48'22.1376"W	8856.54	328.484	0.85	-0.10	-0.84	
15556.00	89.970	347.960	6409.83	8704.28	7643.13	-4649.16	1695140.72	14316135.64	39°25'24.0576"N	80°48'22.3842"W	8946.07	328.689	0.37	0.13	-0.35	
15651.00	90.220	346.650	6409.67	8798.88	7735.81	-4670.04	1695119.85	14316228.28	39°25'24.9740"N	80°48'22.6477"W	9036.15	328.881	1.40	0.26	-1.38	
15745.00	90.090	346.480	6409.42	8892.59	7827.24	-4691.88	1695098.02	14316319.67	39°25'25.8781"N	80°48'22.9235"W	9125.75	329.060	0.23	-0.14	-0.18	
15840.00	90.030	343.850	6409.32	8987.44	7919.06	-4716.20	1695073.71	14316411.46	39°25'26.7862"N	80°48'23.2309"W	9217.06	329.224	2.77	-0.06	-2.77	
15935.00	89.910	339.240	6409.37	9082.41	8009.15	-4746.27	1695043.65	14316501.52	39°25'27.6772"N	80°48'23.6115"W	9309.86	329.349	4.85	-0.13	-4.85	
16030.00	90.030	335.920	6409.42	9177.11	8096.96	-4782.49	1695007.44	14316589.29	39°25'28.5458"N	80°48'24.0708"W	9403.88	329.432	3.50	0.13	-3.49	
16125.00	90.000	337.020	6409.39	9271.66	8184.06	-4820.42	1694969.53	14316676.35	39°25'29.4075"N	80°48'24.5517"W	9498.17	329.502	1.16	-0.03	1.16	
16219.00	89.940	339.440	6409.44	9365.44	8271.35	-4855.28	1694934.68	14316763.61	39°25'30.2709"N	80°48'24.9935"W	9591.09	329.587	2.58	-0.06	2.57	
16314.00	89.970	340.440	6409.52	9460.38	8360.58	-4887.87	1694902.11	14316852.81	39°25'31.1536"N	80°48'25.4063"W	9684.55	329.688	1.05	0.03	1.05	
16408.00	89.660	342.330	6409.82	9554.37	8449.66	-4917.87	1694872.12	14316941.85	39°25'32.0346"N	80°48'25.7863"W	9776.62	329.800	2.04	-0.33	2.01	
16502.00	90.120	342.260	6410.00	9648.37	8539.21	-4946.46	1694843.54	14317031.36	39°25'32.9203"N	80°48'26.1481"W	9868.41	329.918	0.49	0.49	-0.07	
16597.00	90.060	342.520	6409.85	9743.36	8629.76	-4975.20	1694814.81	14317121.87	39°25'33.8158"N	80°48'26.5119"W	9961.19	330.036	0.28	-0.06	0.27	
16692.00	89.780	341.620	6409.98	9838.36	8720.14	-5004.44	1694785.58	14317212.22	39°25'34.7097"N	80°48'26.8821"W	10054.12	330.149	0.99	-0.29	-0.95	
16786.00	89.660	340.810	6410.44	9932.35	8809.13	-5034.71	1694755.32	14317301.18	39°25'35.5899"N	80°48'27.2654"W	10146.39	330.251	0.87	-0.13	-0.86	
16880.00	89.570	340.350	6411.08	10026.32	8897.78	-5065.97	1694724.08	14317389.79	39°25'36.4667"N	80°48'27.6613"W	10238.87	330.345	0.50	-0.10	-0.49	
16975.00	89.880	340.150	6411.53	10121.27	8987.19	-5098.07	1694691.99	14317479.17	39°25'37.3511"N	80°48'28.0680"W	10332.47	330.436	0.39	0.33	-0.21	
17069.00	89.630	339.600	6411.93	10215.20	9075.45	-5130.41	1694659.66	14317567.39	39°25'38.2241"N	80°48'28.4777"W	10425.21	330.520	0.64	-0.27	-0.59	
17172.00	89.780	337.130	6412.46	10317.98	9171.19	-5168.38	1694621.71	14317663.09	39°25'39.1711"N	80°48'28.9590"W	10527.24	330.597	2.40	0.15	-2.40	
17196.00‡	89.780	337.130	6412.56	10341.89	9193.30	-5177.71	1694612.38	14317685.19	39°25'39.3898"N	80°48'29.0773"W	10551.09	330.612	0.00	0.00	0.00	Projected MD at TD: 17196' MD



Actual Wellpath Report

Nuggets Unit 2H AWP Proj: 17196'
Page 9 of 11



REFERENCE WELLPATH IDENTIFICATION			
Operator	ANTERO RESOURCES CORPORATION	Well	Nuggets Unit 2H
Field	Tyler	API	47-095-02657-0000
Facility	Colorado West Pad	Wellbore	Nuggets Unit 2H AWB
Slot	Slot #02		

HOLE & CASING SECTIONS - Ref Wellbore: Nuggets Unit 2H AWB Ref Wellpath: Nuggets Unit 2H AWP Proj: 17196'										
String/Diameter	Start MD [ft]	End MD [ft]	Interval [ft]	Start TVD [ft]	End TVD [ft]	Start N/S [ft]	Start E/W [ft]	End N/S [ft]	End E/W [ft]	
20in Conductor	25.00	105.00	80.00	25.00	105.00	0.00	0.00	0.25	0.20	0.20
17.5in Open Hole	105.00	405.00	300.00	105.00	404.98	0.25	0.20	-0.23	3.00	3.00
13.375in Casing Surface	25.00	405.00	380.00	25.00	404.98	0.00	0.00	-0.23	3.00	3.00
12.25in Open Hole	405.00	3240.00	2835.00	404.98	3087.83	-0.23	3.00	-378.57	-718.39	-718.39
9.625in Casing Intermediate	25.00	3230.00	3205.00	25.00	3078.66	0.00	0.00	-376.58	-714.93	-714.93
8.75in Open Hole	3240.00	6312.00	3072.00	3087.83	5908.77	-378.57	-718.39	-902.07	-1796.58	-1796.58
8.5in Open Hole	6312.00	17196.00	10884.00	5908.77	6412.56	-902.07	-1796.58	9193.30	-5177.71	-5177.71
5.5in Casing Production	25.00	17196.00	17171.00	25.00	6412.56	0.00	0.00	9193.30	-5177.71	-5177.71

TARGETS								
Name	TVD [ft]	North [ft]	East [ft]	Grid East [US ft]	Grid North [US ft]	Latitude	Longitude	Shape
Nuggets Unit 2H - POE - Rev-2	6361.00	-438.46	-2051.22	1697737.63	14308057.26	39°24'4.1268"N	80°47'49.5108"W	point
Nuggets Unit 2H - BHL - Rev-2	6387.00	9194.19	-5173.82	1694616.27	14317686.08	39°25'39.3985"N	80°48'29.0277"W	point
Nuggets Unit 2H - LP - Rev-2	6387.00	-256.56	-2110.19	1697678.68	14308239.10	39°24'5.9260"N	80°47'50.2568"W	point
Nuggets Unit 2H - 50' L/R Hardline	6450.00	4377.86	-3612.52	1696176.95	14312871.67	39°24'51.7632"N	80°48'9.2655"W	rectangle
2D Rectangle 10128.5 x 100.								



Actual Wellpath Report

Nuggets Unit 2H AWP Proj: 17196'
Page 10 of 11



REFERENCE WELLPATH IDENTIFICATION			
Operator	ANTERO RESOURCES CORPORATION	Well	Nuggets Unit 2H
Field	Tyler	API	47-095-02657-0000
Facility	Colorado West Pad	Wellbore	Nuggets Unit 2H AWB
Slot	Slot #02		

WELLPATH COMPOSITION - Ref Wellbore: Nuggets Unit 2H AWB Ref Wellpath: Nuggets Unit 2H AWP Proj: 17196'					
Start MD [ft]	End MD [ft]	Positional Uncertainty Model	Log Name/Comment	Wellbore	Survey Date
25.00	406.00	Gyrodata 2015 - GC+WIR+DPIPE	01 Gyrodata MS Gyro <17-1/2">(100'-396')	Nuggets Unit 2H AWB	1/3/2020
406.00	3130.00	OWSG MWD rev2 + HRGM	02 Premier MWD <12-1/4">(396')(478'-3120')	Nuggets Unit 2H AWB	1/3/2020
3130.00	6244.00	BH NaviTrak (2019) (Axial)	03 APS EM <8-3/4">(3130')(3257'-6244')	Nuggets Unit 2H AWB	3/31/2020
6244.00	17196.00	BH AutoTrak Curve (2019) (Short spacing)	04 BH AT Curve <8-1/2">(6244')(6323'-17172')	Nuggets Unit 2H AWB	3/31/2020



Actual Wellpath Report

Nuggets Unit 2H AWP Proj: 17196'

Page 11 of 11



REFERENCE WELLPATH IDENTIFICATION			
Operator	ANTERO RESOURCES CORPORATION	Well	Nuggets Unit 2H
Field	Tyler	API	47-095-02657-0000
Facility	Colorado West Pad	Wellbore	Nuggets Unit 2H AWB
Slot	Slot #02		

COMMENTS
<p>Wellpath general comments API: 47-095-02657-0000 BHI Job #: 110345906A Rig: Patterson 342 Duration: 04/02/2020-04/05/2020 Gyrodatta MS Gyro <17-1/2">(100'-396') Premier MWD <12-1/4">(396')(478'-3120') APS EM <8-3/4">(3130')(3257'-6244') BH AT Curve <8-1/2">(6244')(6323'-17172') Middlesex: 6611' MD Burkett: 6843' MD Tully: 6909' MD Hamilton: 6991' MD Marcellus POE: 7063' MD Projected MD at TD: 17196' MD</p>