



# ANTERO RESOURCES CORPORATION



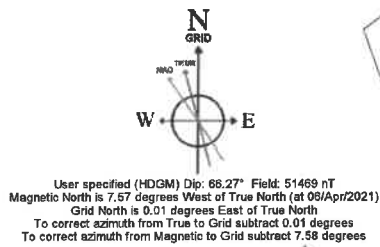
Location: Tyler County, WV  
Field: Tyler  
Facility: Gorrell Pad

Slot: Slot #09  
Well: Garrison Unit 1H  
Wellbore: Garrison Unit 1H PWB

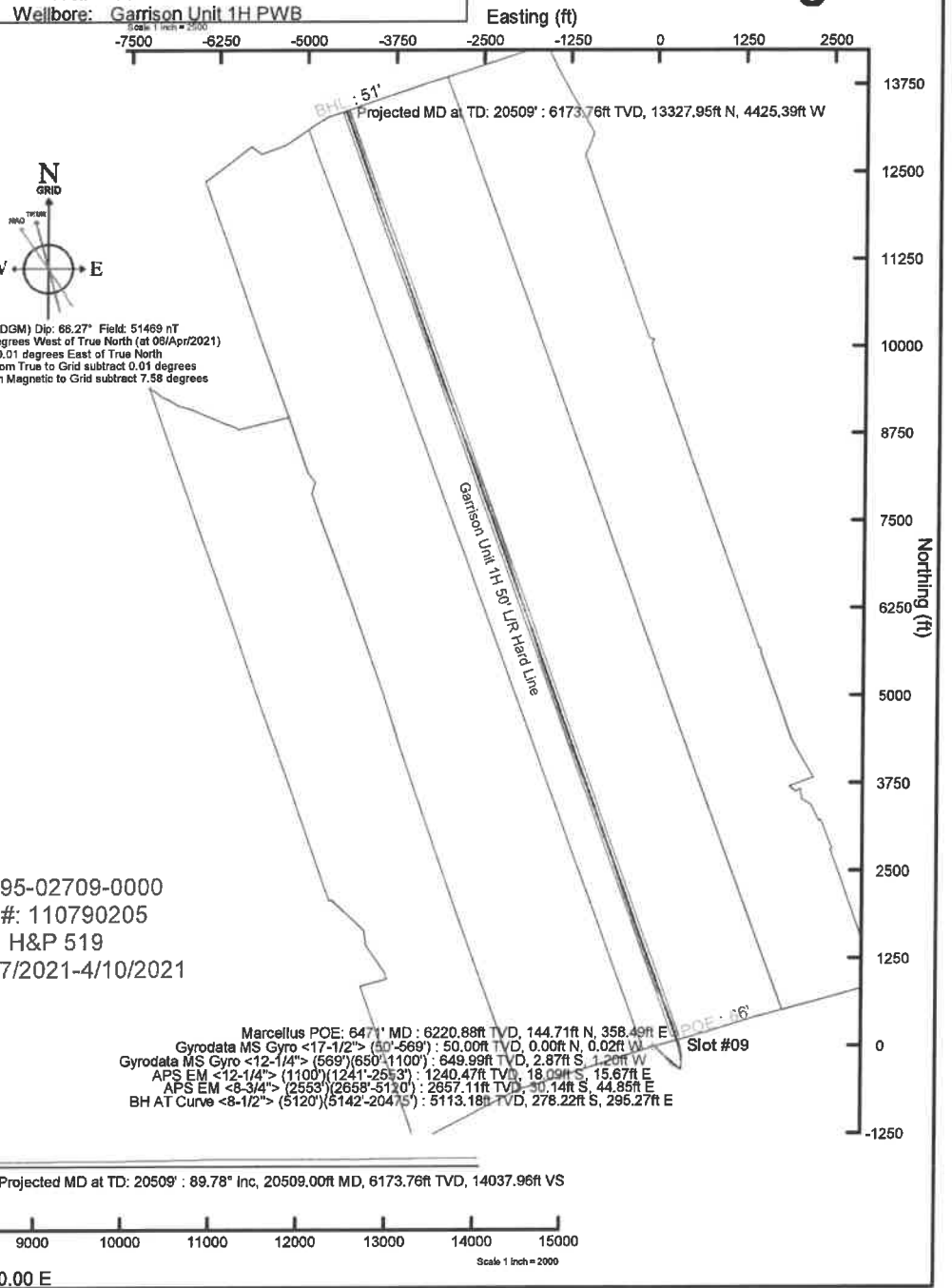
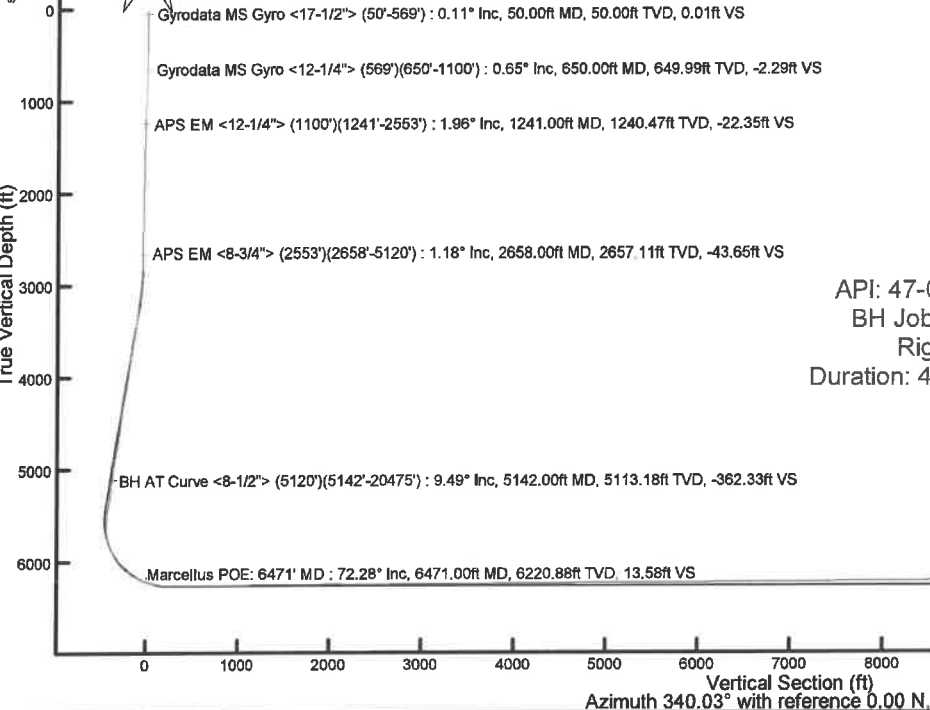
Plot reference wellpath is Garrison Unit 1H PWP Rev-C.0	Grid System: NAD27 / UTM Zone 17 North, US feet
True vertical depths are referenced to H&P 519 (RKB)	North Reference: Grid north
Reference wellpath measured depths are referenced to H&P 519 (RKB)	Scale: True distance
H&P 519 (RKB) to Mean Sea Level: 1075 feet	Coordinates are in feet referenced to Slot
Mean Sea Level to Ground level (At Slot: Slot #09): -1045 feet	Depths are in feet
Crossed wellpath MDs are referenced to each plot's default MD datum	Created by: ede/raar on 2021-04-13; Database: WA_MPL_EASTERNUS_Delta

Location Information						
Facility Name	Grid East (US ft)	Grid North (US ft)	Latitude	Longitude		
Gorrell Pad	1643134.328	14314301.475	39°25'56.5020"N	80°59'25.3580"W		
Slot	Local N (ft)	Local E (ft)	Grid East (US ft)	Grid North (US ft)	Latitude	Longitude
Slot #09	-111.19	-114.92	1643019.450	14314190.330	39°25'5.4032"N	80°59'26.8225"W
Comment Garrison Unit 1H						
H&P 519 (RKB) to Ground level (At Slot: Slot #09)					30ft	
Mean Sea Level to Ground level (At Slot: Slot #09)					-1045ft	
H&P 519 (RKB) to Mean Sea Level					1075ft	

Well Profile Data							
Design Comment	MD (ft)	Inc (°)	Az (°)	TVD (ft)	Local N (ft)	Local E (ft)	VS (ft)
Tie On	2553.00	1.110	100.540	2552.13	-29.75	42.78	-42.58
Proj. to Bottom	2629.00	1.110	100.540	2628.12	-30.02	44.23	-43.32
KOP 1	2809.00	1.110	100.540	2808.08	-30.66	47.66	-45.09
End of 3D Arc	3282.36	10.602	131.525	3288.41	-61.07	85.64	-86.64
Curve KOP	5479.57	10.602	131.525	5438.29	-327.85	386.92	-440.28
Build/Avoid NGZ	5951.96	30.000	0.000	5891.55	-235.18	420.69	-364.71
POE	6477.60	69.581	340.029	6226.00	144.95	332.57	22.65
Landing Pt.	6732.84	90.000	340.029	6271.00	379.79	247.23	272.51
BHL	20531.46	90.000	340.029	8271.00	13348.53	-4465.65	14071.14



Well Data			
Slot	Well	Wellbore	Wellpath
Slot #09	Garrison Unit 1H	Garrison Unit 1H AWB	Garrison Unit 1H AWP Proj: 20509'
Slot #09	Garrison Unit 1H	Garrison Unit 1H PWB	Garrison Unit 1H PWP Rev-C.0



API: 47-095-02709-0000  
BH Job #: 110790205  
Rig: H&P 519  
Duration: 4/7/2021-4/10/2021

Vertical Section (ft)  
Azimuth 340.03° with reference 0.00 N, 0.00 E



# Actual Wellpath Report

Garrison Unit 1H AWP Proj: 20509'  
Page 1 of 12



REFERENCE WELLPATH IDENTIFICATION			
Operator	ANTERO RESOURCES CORPORATION	Well	Garrison Unit 1H
Field	Tyler	API	47-095-02709-0000
Facility	Gorrell Pad	Wellbore	Garrison Unit 1H AWB
Slot	Slot #09		

REPORT SETUP INFORMATION			
Projection System	NAD27 / UTM Zone 17 North, US feet	Software System	WellArchitect® 6.0
North Reference	Grid	User	Edsaryar
Scale	0.999600	Report Generated	13/Apr/2021 at 13:10
Convergence at slot	0.01° East	Database	WA_MPL_EASTERNUS_Defn

WELLPATH LOCATION						
	Local coordinates		Grid coordinates		Geographic coordinates	
	North[ft]	East[ft]	Easting[US ft]	Northing[US ft]	Latitude	Longitude
Slot Location	-111.19	-114.92	1643019.45	14314190.33	39°25'5.4032"N	80°59'26.8225"W
Facility Reference Pt			1643134.33	14314301.48	39°25'6.5020"N	80°59'25.3580"W
Field Reference Pt			0.00	0.00	0°00'0.0000"	85°29'19.3013"W

WELLPATH DATUM			
Calculation method	Minimum curvature	H&P 519 (RKB) to Facility Vertical Datum	1075.00ft
Horizontal Reference Pt	Slot	H&P 519 (RKB) to Mean Sea Level	1075.00ft
Vertical Reference Pt	H&P 519 (RKB)	H&P 519 (RKB) to Ground Level at Slot (Slot #09)	30.00ft
MD Reference Pt	H&P 519 (RKB)	Section Origin	N 0.00, E 0.00 ft
Field Vertical Reference	Mean Sea Level	Section Azimuth	340.03°



# Actual Wellpath Report

Garrison Unit 1H AWP Proj: 20509'  
Page 2 of 12



REFERENCE WELLPATH IDENTIFICATION			
Operator	ANTERO RESOURCES CORPORATION	Well	Garrison Unit 1H
Field	Tyler	API	47-095-02709-0000
Facility	Gorrell Pad	Wellbore	Garrison Unit 1H AWB
Slot	Slot #09		

WELLPATH DATA (227 stations) † = interpolated, ‡ = extrapolated station																
MD	Inclination	Azimuth	TVD	Vert Sect	North	East	Grid East	Grid North	Latitude	Longitude	Closure Dist	Closure Dir	DLS	Build Rate	Turn Rate	Comments
(ft)	(°)	(°)	(ft)	(ft)	(ft)	(ft)	(US ft)	(US ft)			(ft)	(°)	("/100ft)	("/100ft)	("/100ft)	
0.00	0.00	268.900	0.00	0.00	0.00	0.00	1643019.45	14314190.33	39°25'5.4032"N	80°59'26.8225"W	0.00	0.000	0.00	0.00	0.00	
30.00	0.00	268.900	30.00	0.00	0.00	0.00	1643019.45	14314190.33	39°25'5.4032"N	80°59'26.8225"W	0.00	0.000	0.00	0.00	0.00	
50.00	0.110	268.900	50.00	0.01	0.00	-0.02	1643019.43	14314190.33	39°25'5.4032"N	80°59'26.8227"W	0.02	268.900	0.55	0.55	0.00	Gyrodata MS Gyro <17-1/2"> (50'-569')
150.00	0.110	182.700	150.00	-0.05	-0.10	-0.12	1643019.33	14314190.23	39°25'5.4022"N	80°59'26.8240"W	0.15	230.663	0.15	0.00	-86.20	
250.00	0.300	242.810	250.00	-0.17	-0.31	-0.36	1643019.09	14314190.02	39°25'5.4001"N	80°59'26.8270"W	0.48	228.708	0.26	0.19	60.11	
350.00	0.360	193.230	350.00	-0.47	-0.74	-0.66	1643018.79	14314189.59	39°25'5.3959"N	80°59'26.8309"W	0.99	221.845	0.28	0.06	-49.58	
450.00	0.430	181.560	450.00	-1.08	-1.42	-0.74	1643018.71	14314188.91	39°25'5.3891"N	80°59'26.8319"W	1.60	207.651	0.11	0.07	-11.67	
550.00	0.370	202.660	549.99	-1.67	-2.09	-0.88	1643018.57	14314188.24	39°25'5.3825"N	80°59'26.8337"W	2.27	202.771	0.16	-0.06	21.10	
569.00	0.410	220.950	568.99	-1.75	-2.20	-0.95	1643018.50	14314188.13	39°25'5.3814"N	80°59'26.8345"W	2.40	203.275	0.68	0.21	96.26	
650.00	0.650	187.890	649.99	-2.29	-2.87	-1.20	1643018.25	14314187.46	39°25'5.3748"N	80°59'26.8378"W	3.12	202.651	0.47	0.30	-40.81	Gyrodata MS Gyro <12-1/4"> (569')(650'-1100')
746.00	1.320	153.240	745.98	-3.87	-4.40	-0.78	1643018.67	14314185.93	39°25'5.3597"N	80°59'26.8324"W	4.47	190.006	0.90	0.70	-36.09	
800.00	1.480	149.570	799.96	-5.18	-5.56	-0.14	1643019.31	14314184.77	39°25'5.3482"N	80°59'26.8243"W	5.56	181.478	0.34	0.30	-6.80	
900.00	2.400	135.200	899.90	-8.35	-8.16	1.99	1643021.44	14314182.18	39°25'5.3225"N	80°59'26.7972"W	8.40	166.317	1.03	0.92	-14.37	
1000.00	3.190	124.640	999.78	-12.51	-11.22	5.75	1643025.20	14314179.11	39°25'5.2922"N	80°59'26.7492"W	12.61	152.873	0.94	0.79	-10.56	
1100.00	3.270	125.520	1099.62	-17.13	-14.46	10.36	1643029.81	14314175.87	39°25'5.2602"N	80°59'26.6905"W	17.79	144.383	0.09	0.08	0.88	
1241.00	1.960	122.350	1240.47	-22.35	-18.09	15.67	1643035.12	14314172.25	39°25'5.2244"N	80°59'26.6228"W	23.93	139.098	0.93	-0.93	-2.25	APS EM <12-1/4"> (1100')(1241'-2553')
1336.00	1.360	116.790	1335.43	-24.46	-19.47	18.05	1643037.49	14314170.87	39°25'5.2107"N	80°59'26.5925"W	26.55	137.164	0.65	-0.63	-5.85	
1430.00	1.530	118.700	1429.40	-26.22	-20.57	20.15	1643039.59	14314169.77	39°25'5.1998"N	80°59'26.5658"W	28.79	135.600	0.19	0.18	2.03	
1525.00	1.550	119.740	1524.37	-28.15	-21.82	22.37	1643041.82	14314168.52	39°25'5.1875"N	80°59'26.5374"W	31.25	134.280	0.04	0.02	1.09	
1620.00	1.510	112.620	1619.34	-29.98	-22.94	24.65	1643044.09	14314167.40	39°25'5.1764"N	80°59'26.5085"W	33.67	132.945	0.20	-0.04	-7.49	
1714.00	1.360	113.250	1713.31	-31.58	-23.86	26.81	1643046.25	14314166.48	39°25'5.1674"N	80°59'26.4808"W	35.89	131.658	0.16	-0.16	0.67	
1809.00	1.180	105.610	1808.28	-32.92	-24.56	28.79	1643048.23	14314165.78	39°25'5.1604"N	80°59'26.4556"W	37.85	130.468	0.26	-0.19	-8.04	
1903.00	1.090	114.500	1902.26	-34.11	-25.19	30.54	1643049.98	14314165.15	39°25'5.1541"N	80°59'26.4334"W	39.59	129.524	0.21	-0.10	9.46	
1998.00	0.970	117.930	1997.25	-35.34	-25.95	32.07	1643051.51	14314164.39	39°25'5.1467"N	80°59'26.4139"W	41.25	128.974	0.14	-0.13	3.61	
2092.00	1.070	119.290	2091.23	-36.59	-26.75	33.54	1643052.98	14314163.59	39°25'5.1388"N	80°59'26.3952"W	42.90	128.573	0.11	0.11	1.45	
2186.00	1.180	112.900	2185.22	-37.92	-27.55	35.20	1643054.63	14314162.79	39°25'5.1308"N	80°59'26.3740"W	44.70	128.056	0.18	0.12	-6.80	
2281.00	1.290	108.300	2280.19	-39.25	-28.27	37.11	1643056.55	14314162.07	39°25'5.1237"N	80°59'26.3496"W	46.65	127.298	0.16	0.12	-4.84	
2376.00	1.270	106.140	2375.17	-40.53	-28.90	39.14	1643058.57	14314161.44	39°25'5.1175"N	80°59'26.3238"W	48.65	126.441	0.05	-0.02	-2.27	
2471.00	1.230	102.620	2470.15	-41.70	-29.41	41.15	1643060.58	14314160.93	39°25'5.1124"N	80°59'26.2982"W	50.58	125.561	0.09	-0.04	-3.71	
2553.00	1.110	100.540	2552.13	-42.58	-29.75	42.78	1643062.22	14314160.59	39°25'5.1091"N	80°59'26.2773"W	52.11	124.814	0.16	-0.15	-2.54	

RECEIVED  
 Office of Oil and Gas  
 NOV 12 2021  
 WV Department of  
 Environmental Protection



# Actual Wellpath Report

Garrison Unit 1H AWP Proj: 20509'  
Page 3 of 12



REFERENCE WELLPATH IDENTIFICATION			
Operator	ANTERO RESOURCES CORPORATION	Well	Garrison Unit 1H
Field	Tyler	API	47-095-02709-0000
Facility	Gorrell Pad	Wellbore	Garrison Unit 1H AWB
Slot	Slot #09		

WELLPATH DATA (227 stations)																
MD	Inclination	Azimuth	TVD	Vert Sect	North	East	Grid East	Grid North	Latitude	Longitude	Closure Dist	Closure Dir	DLS	Build Rate	Turn Rate	Comments
[ft]	[°]	[°]	[ft]	[ft]	[ft]	[ft]	[US ft]	[US ft]			[ft]	[°]	[°/100ft]	[°/100ft]	[°/100ft]	
2658.00	1.180	100.910	2657.11	-43.65	-30.14	44.85	1643064.28	14314160.20	39°25'5.1052"N	80°59'26.2511"W	54.03	123.906	0.07	0.07	0.35	APS EM <8-3/4"> (2553')(2658'-5120')
2753.00	0.760	107.800	2752.10	-44.53	-30.52	46.41	1643065.84	14314159.82	39°25'5.1015"N	80°59'26.2312"W	55.54	123.332	0.46	-0.44	7.25	
2847.00	3.890	144.250	2846.01	-47.99	-33.30	48.86	1643068.29	14314157.04	39°25'5.0740"N	80°59'26.1999"W	59.13	124.273	3.52	3.33	38.78	
2942.00	5.030	144.350	2940.72	-55.10	-39.30	53.17	1643072.60	14314151.05	39°25'5.0147"N	80°59'26.1450"W	66.12	126.467	1.20	1.20	0.11	
3037.00	4.750	140.600	3035.37	-62.82	-45.72	58.10	1643077.52	14314144.63	39°25'4.9512"N	80°59'26.0823"W	73.93	128.202	0.45	-0.29	-3.95	
3134.00	7.640	131.170	3131.80	-72.25	-53.07	65.50	1643084.93	14314137.28	39°25'4.8786"N	80°59'25.9879"W	84.30	129.015	3.15	2.98	-9.72	
3228.00	8.600	131.120	3224.86	-83.88	-61.81	75.50	1643094.92	14314128.55	39°25'4.7922"N	80°59'25.8605"W	97.57	129.305	1.02	1.02	-0.05	
3323.00	8.150	127.230	3318.84	-95.76	-70.55	86.21	1643105.63	14314119.80	39°25'4.7058"N	80°59'25.7240"W	111.40	129.295	0.76	-0.47	-4.09	
3418.00	7.550	127.820	3412.95	-106.70	-78.45	96.51	1643115.92	14314111.91	39°25'4.6277"N	80°59'25.5929"W	124.37	129.109	0.64	-0.63	0.62	
3512.00	9.350	132.730	3505.93	-118.71	-87.42	106.99	1643126.40	14314102.94	39°25'4.5390"N	80°59'25.4593"W	138.17	129.252	2.06	1.91	5.22	
3607.00	10.320	134.400	3599.53	-133.24	-98.61	118.74	1643138.14	14314091.76	39°25'4.4284"N	80°59'25.3096"W	154.35	129.709	1.06	1.02	1.76	
3702.00	9.010	127.630	3693.19	-147.19	-109.11	130.71	1643150.11	14314081.26	39°25'4.3246"N	80°59'25.1571"W	170.27	129.852	1.82	-1.38	-7.13	
3796.00	10.520	133.450	3785.82	-161.08	-119.51	142.77	1643162.17	14314070.87	39°25'4.2219"N	80°59'25.0034"W	186.19	129.930	1.92	1.61	6.19	
3891.00	10.960	129.270	3879.16	-176.60	-131.19	156.06	1643175.45	14314059.20	39°25'4.1064"N	80°59'24.8341"W	203.88	130.051	0.94	0.46	-4.40	
3985.00	9.540	125.460	3971.66	-190.69	-141.36	169.33	1643188.71	14314049.02	39°25'4.0058"N	80°59'24.6651"W	220.58	129.857	1.67	-1.51	-4.05	
4080.00	9.190	131.900	4065.40	-203.87	-151.00	181.38	1643200.76	14314039.39	39°25'3.9106"N	80°59'24.5115"W	236.01	129.776	1.16	-0.37	6.78	
4175.00	10.660	147.820	4158.99	-219.15	-163.50	191.71	1643211.09	14314026.89	39°25'3.7870"N	80°59'24.3799"W	251.97	130.459	3.26	1.55	16.76	
4269.00	10.850	142.150	4251.34	-236.07	-177.85	201.77	1643221.14	14314012.55	39°25'3.6452"N	80°59'24.2518"W	268.96	131.394	1.14	0.20	-6.03	
4364.00	9.470	136.440	4344.85	-251.74	-190.57	212.65	1643232.01	14313999.83	39°25'3.5194"N	80°59'24.1132"W	285.54	131.867	1.80	-1.45	-6.01	
4458.00	8.280	130.690	4437.73	-264.73	-200.59	223.11	1643242.47	14313989.82	39°25'3.4204"N	80°59'23.9800"W	300.02	131.958	1.58	-1.27	-6.12	
4553.00	7.030	124.350	4531.88	-275.41	-208.33	233.09	1643252.45	14313982.08	39°25'3.3439"N	80°59'23.8527"W	312.62	131.789	1.59	-1.32	-6.67	
4648.00	7.820	143.290	4626.10	-286.32	-216.79	241.76	1643261.11	14313973.62	39°25'3.2602"N	80°59'23.7423"W	324.72	131.884	2.69	0.83	19.94	
4742.00	9.060	146.360	4719.08	-299.64	-228.08	249.68	1643269.03	14313962.34	39°25'3.1487"N	80°59'23.6414"W	338.17	132.411	1.40	1.32	3.27	
4837.00	10.230	143.870	4812.73	-315.01	-241.12	258.80	1643278.15	14313949.30	39°25'3.0198"N	80°59'23.5252"W	353.72	132.975	1.31	1.23	-2.62	
4932.00	10.510	141.560	4906.18	-331.33	-254.72	269.16	1643288.50	14313935.71	39°25'2.8853"N	80°59'23.3932"W	370.58	133.421	0.53	0.29	-2.43	
5027.00	9.370	134.150	4999.76	-346.51	-266.90	280.10	1643299.43	14313923.54	39°25'2.7650"N	80°59'23.2539"W	386.90	133.618	1.80	-1.20	-7.80	
5120.00	9.660	121.950	5091.49	-359.46	-276.30	292.15	1643311.48	14313914.14	39°25'2.6720"N	80°59'23.1003"W	402.11	133.403	2.19	0.31	-13.12	
5142.00	9.490	121.170	5113.18	-362.33	-278.22	295.27	1643314.60	14313912.23	39°25'2.6531"N	80°59'23.0606"W	405.69	133.297	0.97	-0.77	-3.55	BH AT Curve <8-1/2"> (5120')(5142'-20475')
5231.00	10.150	121.060	5200.88	-374.14	-286.06	308.26	1643327.59	14313904.39	39°25'2.5756"N	80°59'22.8950"W	420.54	132.860	0.74	0.74	-0.12	
5325.00	12.190	120.410	5293.09	-388.23	-295.36	323.92	1643343.24	14313895.09	39°25'2.4837"N	80°59'22.6956"W	438.36	132.359	2.17	2.17	-0.69	



# Actual Wellpath Report

Garrison Unit 1H AWP Proj: 20509'  
Page 4 of 12



REFERENCE WELL PATH IDENTIFICATION			
Operator	ANTERO RESOURCES CORPORATION	Well	Garrison Unit 1H
Field	Tyler	API	47-095-02709-0000
Facility	Gorrell Pad	Wellbore	Garrison Unit 1H AWB
Slot	Slot #09		

WELLPATH DATA (227 stations) † = interpolated, ‡ = extrapolated station																
MD	Inclination	Azimuth	TVD	Vert Sect	North	East	Grid East	Grid North	Latitude	Longitude	Closure Dist	Closure Dir	DLS	Build Rate	Turn Rate	Comments
(ft)	(°)	(°)	(ft)	(ft)	(ft)	(ft)	(US ft)	(US ft)			(ft)	(°)	(°/100ft)	(°/100ft)	(°/100ft)	
5420.00	11.610	120.760	5386.05	-403.35	-305.32	340.78	1643360.10	14313885.13	39°25'2.3851"N	80°59'22.4807"W	457.55	131.858	0.62	-0.61	0.37	
5515.00	11.380	118.440	5479.14	-417.76	-314.68	357.24	1643376.55	14313875.78	39°25'2.2927"N	80°59'22.2710"W	476.07	131.375	0.54	-0.24	-2.44	
5610.00	12.770	89.340	5572.12	-428.25	-319.02	376.00	1643395.30	14313871.44	39°25'2.2497"N	80°59'22.0320"W	493.10	130.313	6.50	1.46	-30.63	
5704.00	15.010	51.230	5663.56	-427.77	-311.26	395.92	1643415.21	14313879.19	39°25'2.3264"N	80°59'21.7782"W	503.62	128.174	9.83	2.38	-40.54	
5799.00	18.370	24.290	5754.68	-413.05	-289.88	411.70	1643430.98	14313900.57	39°25'2.5377"N	80°59'21.5771"W	503.51	125.150	8.78	3.54	-28.36	
5894.00	23.530	11.270	5843.41	-386.09	-257.60	421.57	1643440.85	14313932.84	39°25'2.8568"N	80°59'21.4512"W	494.04	121.426	7.29	5.43	-13.71	
5988.00	30.310	3.790	5927.20	-348.28	-215.46	426.82	1643446.09	14313974.95	39°25'3.2732"N	80°59'21.3844"W	478.12	116.786	8.05	7.21	-7.96	
6083.00	37.580	355.320	6006.00	-298.30	-162.57	426.04	1643445.31	14314027.82	39°25'3.7959"N	80°59'21.3942"W	456.00	110.887	9.11	7.65	-8.92	
6103.00†	39.389	354.348	6021.66	-286.27	-150.18	424.91	1643444.19	14314040.21	39°25'3.9184"N	80°59'21.4085"W	450.67	109.465	9.54	9.04	-4.86	Sycamore: 6103' MD
6177.00	46.140	351.310	6075.96	-237.29	-100.38	418.56	1643437.84	14314089.99	39°25'4.4106"N	80°59'21.4894"W	430.43	103.486	9.54	9.12	-4.10	
6239.00†	52.313	349.372	6116.43	-191.12	-54.12	410.65	1643429.94	14314136.23	39°25'4.8678"N	80°59'21.5901"W	414.20	97.508	10.23	9.96	-3.13	Middlesex: 6239' MD
6272.00	55.610	348.470	6135.85	-164.76	-27.94	405.52	1643424.81	14314162.40	39°25'5.1266"N	80°59'21.6554"W	406.48	93.942	10.23	9.99	-2.73	
6319.00	60.400	347.200	6160.74	-125.28	11.01	397.11	1643416.40	14314201.33	39°25'5.5115"N	80°59'21.7625"W	397.26	88.412	10.45	10.19	-2.70	
6367.00	64.090	345.490	6183.09	-83.07	52.27	387.08	1643406.37	14314242.58	39°25'5.9194"N	80°59'21.8903"W	390.59	82.309	8.31	7.69	-3.56	
6405.00†	67.855	343.659	6198.56	-48.48	85.72	377.84	1643397.14	14314276.02	39°25'6.2500"N	80°59'22.0080"W	387.44	77.218	10.84	9.91	-4.82	Burkett: 6405' MD
6414.00	68.750	343.240	6201.89	-40.13	93.74	375.46	1643394.76	14314284.03	39°25'6.3292"N	80°59'22.0383"W	386.98	75.982	10.84	9.94	-4.65	
6461.00†	71.707	340.487	6217.79	4.07	135.76	361.68	1643380.99	14314326.03	39°25'6.7445"N	80°59'22.2138"W	386.32	69.427	8.36	6.29	-5.86	Tully: 6461' MD
6462.00	71.770	340.430	6218.10	5.02	136.65	361.37	1643380.67	14314326.93	39°25'6.7534"N	80°59'22.2178"W	386.34	69.286	8.36	6.33	-5.75	
6471.00†	72.282	340.320	6220.88	13.58	144.71	358.49	1643377.80	14314334.99	39°25'6.8331"N	80°59'22.2544"W	386.60	68.017	5.81	5.69	-1.22	Marcellus POE: 6471' MD
6556.00	77.120	339.310	6243.30	95.54	221.64	330.20	1643349.52	14314411.88	39°25'7.5934"N	80°59'22.6148"W	397.69	56.129	5.81	5.69	-1.19	
6651.00	83.770	338.400	6259.06	189.15	308.96	296.42	1643315.75	14314499.17	39°25'8.4565"N	80°59'23.0451"W	428.16	43.813	7.06	7.00	-0.96	
6746.00	89.880	338.890	6264.32	283.93	397.26	261.90	1643281.24	14314587.43	39°25'9.3292"N	80°59'23.4849"W	475.82	33.395	6.45	6.43	0.52	
6840.00	90.030	337.180	6264.40	377.87	484.44	226.74	1643246.10	14314674.57	39°25'10.1908"N	80°59'23.9327"W	534.87	25.082	1.83	0.16	-1.82	
6935.00	90.120	334.710	6264.27	472.62	571.18	188.02	1643207.39	14314761.28	39°25'11.0482"N	80°59'24.4260"W	601.33	18.220	2.60	0.09	-2.60	
7029.00	90.430	332.460	6263.82	566.02	655.36	146.20	1643165.59	14314845.42	39°25'11.8802"N	80°59'24.9587"W	671.47	12.576	2.42	0.33	-2.39	
7124.00	90.120	329.890	6263.37	659.88	738.58	100.40	1643119.81	14314928.61	39°25'12.7028"N	80°59'25.5421"W	745.37	7.742	2.72	-0.33	-2.71	
7219.00	90.090	333.940	6263.19	753.91	822.38	55.69	1643075.12	14315012.37	39°25'13.5311"N	80°59'26.1118"W	824.26	3.874	4.26	-0.03	4.26	
7313.00	91.080	341.360	6262.23	847.75	909.25	19.97	1643039.41	14315099.21	39°25'14.3897"N	80°59'26.5668"W	909.47	1.258	7.96	1.05	7.89	
7408.00	89.940	339.180	6261.38	942.74	998.66	-12.10	1643007.36	14315188.59	39°25'15.2734"N	80°59'26.9753"W	998.73	359.306	2.59	-1.20	-2.29	
7503.00	91.170	341.510	6260.46	1037.73	1088.11	-44.05	1642975.42	14315278.00	39°25'16.1576"N	80°59'27.3823"W	1089.00	357.682	2.77	1.29	2.45	



# Actual Wellpath Report

Garrison Unit 1H AWP Proj: 20509'  
Page 5 of 12



REFERENCE WELLPATH IDENTIFICATION			
Operator	ANTERO RESOURCES CORPORATION	Well	Garrison Unit 1H
Field	Tyler	API	47-095-02709-0000
Facility	Gorrell Pad	Wellbore	Garrison Unit 1H AWB
Slot	Slot #09		

WELLPATH DATA (227 stations)																
MD	Inclination	Azimuth	TVD	Vert Sect	North	East	Grid East	Grid North	Latitude	Longitude	Closure Dist	Closure Dir	DLS	Build Rate	Turn Rate	Comments
[ft]	[°]	[°]	[ft]	[ft]	[ft]	[ft]	[US ft]	[US ft]			[ft]	[°]	["/100ft]	["/100ft]	["/100ft]	
7597.00	91.690	339.400	6258.12	1131.69	1176.66	-75.48	1642944.00	14315366.52	39°25'17.0328"N	80°59'27.7827"W	1179.08	356.330	2.31	0.55	-2.24	
7692.00	92.180	340.580	6254.91	1226.63	1265.88	-107.97	1642911.52	14315455.70	39°25'17.9146"N	80°59'28.1966"W	1270.47	355.125	1.34	0.52	1.24	
7787.00	90.340	341.450	6252.82	1321.59	1355.68	-138.87	1642880.64	14315545.47	39°25'18.8022"N	80°59'28.5902"W	1362.77	354.151	2.14	-1.94	0.92	
7881.00	89.940	336.410	6252.59	1415.54	1443.37	-172.65	1642846.87	14315633.12	39°25'19.6689"N	80°59'29.0206"W	1453.66	353.179	5.38	-0.43	-5.36	
7976.00	89.720	341.250	6252.87	1510.50	1531.93	-206.95	1642812.59	14315721.64	39°25'20.5442"N	80°59'29.4575"W	1545.84	352.307	5.10	-0.23	5.09	
8071.00	90.280	340.760	6252.87	1605.48	1621.76	-237.87	1642781.68	14315811.43	39°25'21.4320"N	80°59'29.8514"W	1639.11	351.656	0.78	0.59	-0.52	
8165.00	90.090	340.750	6252.57	1699.47	1710.50	-268.85	1642750.71	14315900.15	39°25'22.3092"N	80°59'30.2461"W	1731.50	351.068	0.20	-0.20	-0.01	
8260.00	90.520	341.310	6252.06	1794.46	1800.34	-299.73	1642719.84	14315989.95	39°25'23.1971"N	80°59'30.6395"W	1825.12	350.548	0.74	0.45	0.59	
8355.00	90.280	341.810	6251.40	1889.42	1890.46	-329.78	1642689.80	14316080.03	39°25'24.0878"N	80°59'31.0223"W	1919.01	350.105	0.58	-0.25	0.53	
8449.00	90.370	340.790	6250.87	1983.39	1979.50	-359.92	1642659.68	14316169.03	39°25'24.9679"N	80°59'31.4062"W	2011.95	349.695	1.09	0.10	-1.09	
8544.00	89.630	340.380	6250.87	2078.39	2069.09	-391.49	1642628.11	14316258.59	39°25'25.8534"N	80°59'31.8085"W	2105.81	349.286	0.89	-0.78	-0.43	
8639.00	89.970	341.020	6251.20	2173.38	2158.75	-422.89	1642596.73	14316348.22	39°25'26.7396"N	80°59'32.2085"W	2199.79	348.916	0.76	0.36	0.67	
8733.00	89.380	340.980	6251.73	2267.37	2247.63	-453.50	1642566.14	14316437.06	39°25'27.6180"N	80°59'32.5984"W	2292.92	348.593	0.63	-0.63	-0.04	
8828.00	89.660	341.330	6252.53	2362.34	2337.53	-484.18	1642535.46	14316526.92	39°25'28.5066"N	80°59'32.9893"W	2387.15	348.298	0.47	0.29	0.37	
8923.00	90.310	341.420	6252.55	2457.32	2427.56	-514.52	1642505.14	14316616.91	39°25'29.3964"N	80°59'33.3759"W	2481.49	348.033	0.69	0.68	0.09	
9017.00	90.030	340.980	6252.27	2551.30	2516.54	-544.81	1642474.86	14316705.86	39°25'30.2759"N	80°59'33.7618"W	2574.84	347.784	0.55	-0.30	-0.47	
9112.00	91.170	342.070	6251.28	2646.26	2606.64	-574.92	1642444.77	14316795.92	39°25'31.1664"N	80°59'34.1453"W	2669.29	347.562	1.66	1.20	1.15	
9207.00	90.620	338.480	6249.80	2741.23	2696.04	-606.97	1642412.72	14316885.29	39°25'32.0500"N	80°59'34.5537"W	2763.52	347.312	3.82	-0.58	-3.78	
9301.00	90.220	341.390	6249.11	2835.21	2784.32	-639.22	1642380.49	14316973.53	39°25'32.9226"N	80°59'34.9645"W	2856.75	347.070	3.12	-0.43	3.10	
9396.00	89.780	339.630	6249.11	2930.21	2873.87	-670.91	1642348.81	14317063.05	39°25'33.8077"N	80°59'35.3683"W	2951.15	346.860	1.91	-0.46	-1.85	
9491.00	89.850	337.360	6249.41	3025.17	2962.25	-705.73	1642314.00	14317151.39	39°25'34.6812"N	80°59'35.8120"W	3045.16	346.600	2.39	0.07	-2.39	
9585.00	89.420	341.690	6250.01	3119.14	3050.29	-738.61	1642281.14	14317239.40	39°25'35.5514"N	80°59'36.2308"W	3138.44	346.388	4.63	-0.46	4.61	
9680.00	91.940	342.000	6248.88	3214.08	3140.55	-768.20	1642251.56	14317329.62	39°25'36.4434"N	80°59'36.6079"W	3233.14	346.255	2.67	2.65	0.33	
9774.00	91.170	338.340	6246.33	3308.02	3228.93	-800.07	1642219.70	14317417.96	39°25'37.3169"N	80°59'37.0139"W	3326.57	346.083	3.98	-0.82	-3.89	
9869.00	89.350	338.550	6245.90	3402.98	3317.28	-834.97	1642184.81	14317506.28	39°25'38.1902"N	80°59'37.4586"W	3420.75	345.872	1.93	-1.92	0.22	
9964.00	89.690	338.260	6246.70	3497.94	3405.61	-869.94	1642149.86	14317594.57	39°25'39.0632"N	80°59'37.9041"W	3514.96	345.671	0.47	0.36	-0.31	
10058.00	90.120	339.860	6246.85	3591.92	3493.40	-903.53	1642116.28	14317682.32	39°25'39.9309"N	80°59'38.3321"W	3608.35	345.499	1.76	0.46	1.70	
10153.00	90.120	341.680	6246.65	3686.91	3583.09	-934.82	1642085.01	14317771.98	39°25'40.8174"N	80°59'38.7308"W	3703.03	345.378	1.92	0.00	1.92	
10248.00	91.940	340.490	6244.95	3781.88	3672.94	-965.61	1642054.23	14317861.80	39°25'41.7055"N	80°59'39.1230"W	3797.75	345.270	2.29	1.92	-1.25	
10342.00	89.970	338.080	6243.38	3875.84	3760.84	-998.85	1642021.00	14317949.66	39°25'42.5742"N	80°59'39.5466"W	3891.22	345.126	3.31	-2.10	-2.56	



# Actual Wellpath Report

Garrison Unit 1H AWP Proj: 20509'  
Page 6 of 12



REFERENCE WELLPATH IDENTIFICATION			
Operator	ANTERO RESOURCES CORPORATION	Well	Garrison Unit 1H
Field	Tyler	API	47-095-02709-0000
Facility	Gorrell Pad	Wellbore	Garrison Unit 1H AWB
Slot	Slot #09		

WELLPATH DATA (227 stations)																
MD	Inclination	Azimuth	TVD	Vert Sect	North	East	Grid East	Grid North	Latitude	Longitude	Closure Dist	Closure Dir	DLS	Build Rate	Turn Rate	Comments
[ft]	[°]	[°]	[ft]	[ft]	[ft]	[ft]	[US ft]	[US ft]			[ft]	[°]	["/100ft]	["/100ft]	["/100ft]	
10437.00	90.090	338.830	6243.33	3970.81	3849.20	-1033.73	1641986.13	14318037.99	39°25'43.4476"N	80°59'39.9911"W	3985.60	344.967	0.80	0.13	0.79	
10532.00	89.940	339.020	6243.31	4065.79	3937.85	-1067.90	1641951.98	14318126.60	39°25'44.3237"N	80°59'40.4264"W	4080.08	344.827	0.25	-0.16	0.20	
10626.00	90.650	341.880	6242.82	4159.77	4026.42	-1099.35	1641920.55	14318215.13	39°25'45.1991"N	80°59'40.8271"W	4173.80	344.729	3.13	0.76	3.04	
10721.00	90.680	337.780	6241.72	4254.75	4115.57	-1132.09	1641887.81	14318304.24	39°25'46.0802"N	80°59'41.2444"W	4268.43	344.620	4.32	0.03	-4.32	
10816.00	89.820	334.540	6241.30	4349.52	4202.45	-1170.49	1641849.43	14318391.09	39°25'46.9390"N	80°59'41.7336"W	4362.41	344.436	3.53	-0.91	-3.41	
10911.00	90.370	337.230	6241.15	4444.26	4289.15	-1209.30	1641810.64	14318477.76	39°25'47.7959"N	80°59'42.2281"W	4456.37	344.255	2.89	0.58	2.83	
11005.00	90.430	340.680	6240.49	4538.23	4376.86	-1243.05	1641776.90	14318565.43	39°25'48.6628"N	80°59'42.6582"W	4549.96	344.145	3.67	0.06	3.67	
11100.00	91.540	341.680	6238.86	4633.19	4466.77	-1273.69	1641746.27	14318655.30	39°25'49.5514"N	80°59'43.0486"W	4644.81	344.085	1.57	1.17	1.05	
11289.00	90.090	340.210	6236.17	4822.14	4645.39	-1335.38	1641684.60	14318833.85	39°25'51.3168"N	80°59'43.8347"W	4833.51	343.962	1.09	-0.77	-0.78	
11384.00	90.460	342.090	6235.71	4917.11	4735.28	-1366.07	1641653.93	14318923.71	39°25'52.2053"N	80°59'44.2258"W	4928.40	343.908	2.02	0.39	1.98	
11479.00	90.490	341.280	6234.92	5012.07	4825.47	-1395.93	1641624.09	14319013.86	39°25'53.0967"N	80°59'44.6062"W	5023.32	343.866	0.85	0.03	-0.85	
11573.00	90.000	340.380	6234.52	5106.06	4914.25	-1426.79	1641593.23	14319102.61	39°25'53.9742"N	80°59'44.9995"W	5117.19	343.810	1.09	-0.52	-0.96	
11668.00	89.320	340.020	6235.09	5201.05	5003.64	-1458.97	1641561.07	14319191.95	39°25'54.8576"N	80°59'45.4095"W	5212.00	343.744	0.81	-0.72	-0.38	
11763.00	90.980	341.890	6234.84	5296.03	5093.43	-1489.97	1641530.08	14319281.71	39°25'55.7451"N	80°59'45.8045"W	5306.88	343.694	2.63	1.75	1.97	
11858.00	90.030	337.780	6234.00	5391.01	5182.58	-1522.71	1641497.35	14319370.83	39°25'56.6262"N	80°59'46.2217"W	5401.65	343.627	4.44	-1.00	-4.33	
11952.00	90.090	339.260	6233.90	5484.97	5270.05	-1557.13	1641462.95	14319458.26	39°25'57.4908"N	80°59'46.6604"W	5495.28	343.539	1.58	0.06	1.57	
12047.00	89.880	342.160	6233.93	5579.96	5359.71	-1588.51	1641431.58	14319547.88	39°25'58.3769"N	80°59'47.0602"W	5590.15	343.491	3.06	-0.22	3.05	
12141.00	89.850	339.730	6234.15	5673.94	5448.55	-1619.19	1641400.91	14319636.69	39°25'59.2550"N	80°59'47.4513"W	5684.05	343.449	2.59	-0.03	-2.59	
12236.00	90.490	342.270	6233.87	5768.91	5538.37	-1650.12	1641369.99	14319726.47	39°26'0.1427"N	80°59'47.8454"W	5778.96	343.409	2.76	0.67	2.67	
12331.00	90.220	340.880	6233.28	5863.88	5628.49	-1680.15	1641339.98	14319816.56	39°26'1.0335"N	80°59'48.2280"W	5873.91	343.379	1.49	-0.28	-1.46	
12425.00	90.000	342.250	6233.10	5957.84	5717.67	-1709.87	1641310.27	14319905.70	39°26'1.9148"N	80°59'48.6068"W	5967.86	343.351	1.48	-0.23	1.46	
12520.00	90.430	341.710	6232.74	6052.78	5808.00	-1739.26	1641280.89	14319996.00	39°26'2.8077"N	80°59'48.9813"W	6062.83	343.329	0.73	0.45	-0.57	
12615.00	91.320	342.860	6231.29	6147.70	5898.49	-1768.16	1641252.00	14320086.45	39°26'3.7020"N	80°59'49.3496"W	6157.80	343.313	1.53	0.94	1.21	
12709.00	89.690	341.460	6230.46	6241.62	5987.98	-1796.96	1641223.22	14320175.88	39°26'4.5863"N	80°59'49.7165"W	6251.77	343.296	2.29	-1.73	-1.49	
12804.00	90.370	340.440	6230.41	6336.61	6077.75	-1827.96	1641192.22	14320265.64	39°26'5.4738"N	80°59'50.1117"W	6346.69	343.261	1.29	0.72	-1.07	
12898.00	90.520	342.570	6229.68	6430.57	6166.89	-1857.78	1641162.42	14320354.74	39°26'6.3548"N	80°59'50.4916"W	6440.64	343.235	2.27	0.16	2.27	
12993.00	89.660	341.270	6229.53	6525.51	6257.20	-1887.26	1641132.95	14320445.01	39°26'7.2473"N	80°59'50.8674"W	6535.62	343.216	1.64	-0.91	-1.37	
13088.00	90.460	342.350	6229.43	6620.47	6347.45	-1916.92	1641103.30	14320535.23	39°26'8.1393"N	80°59'51.2453"W	6630.58	343.196	1.41	0.84	1.14	
13182.00	89.980	341.240	6229.89	6714.42	6436.74	-1946.28	1641073.95	14320624.48	39°26'9.0218"N	80°59'51.6195"W	6724.55	343.176	1.97	-1.57	-1.18	
13277.00	90.830	341.530	6230.05	6809.39	6526.76	-1976.60	1641043.84	14320714.47	39°26'9.9116"N	80°59'52.0060"W	6819.50	343.151	1.97	1.95	0.31	



# Actual Wellpath Report

Garrison Unit 1H AWP Proj: 20509'  
Page 7 of 12



REFERENCE WELLPATH IDENTIFICATION			
Operator	ANTERO RESOURCES CORPORATION	Well	Garrison Unit 1H
Field	Tyler	API	47-095-02709-0000
Facility	Gorrell Pad	Wellbore	Garrison Unit 1H AWB
Slot	Slot #09		

WELLPATH DATA (227 stations)																	
MD	Inclination	Azimuth	TVD	Vert Sect	North	East	Grid East	Grid North	Latitude	Longitude	Closure Dist	Closure Dir	DLS	Build Rate	Turn Rate	Comments	
[ft]	[°]	[°]	[ft]	[ft]	[ft]	[ft]	[US ft]	[US ft]			[ft]	[°]	["/100ft]	["/100ft]	["/100ft]		
13372.00	90.800	342.530	6228.70	6904.32	6617.12	-2005.91	1641014.35	14320804.79	39°26'10.8046"N	80°59'52.3794"W	6914.47	343.136	1.05	-0.03	1.05		
13466.00	91.010	342.670	6227.21	6998.21	6706.81	-2034.02	1640986.25	14320894.44	39°26'11.6910"N	80°59'52.7376"W	7008.46	343.129	0.27	0.22	0.15		
13561.00	89.720	342.010	6226.61	7093.13	6797.32	-2062.84	1640957.44	14320984.92	39°26'12.5857"N	80°59'53.1049"W	7103.44	343.118	1.53	-1.36	-0.69		
13656.00	90.310	342.130	6226.58	7188.07	6887.71	-2092.08	1640928.21	14321075.27	39°26'13.4790"N	80°59'53.4776"W	7198.43	343.104	0.63	0.62	0.13		
13751.00	90.860	342.240	6225.61	7283.00	6978.15	-2121.14	1640899.16	14321165.67	39°26'14.3729"N	80°59'53.8480"W	7293.41	343.092	0.59	0.58	0.12		
13845.00	89.540	341.200	6225.29	7378.95	7067.40	-2150.63	1640869.69	14321254.89	39°26'15.2550"N	80°59'54.2238"W	7387.38	343.075	1.79	-1.40	-1.11		
13939.00	90.980	339.670	6224.86	7470.94	7155.97	-2182.10	1640838.22	14321343.42	39°26'16.1304"N	80°59'54.6249"W	7481.27	343.042	2.24	1.53	-1.63		
14034.00	90.120	340.340	6223.95	7565.94	7245.24	-2214.59	1640805.75	14321432.66	39°26'17.0127"N	80°59'55.0389"W	7576.14	343.004	1.15	-0.91	0.71		
14129.00	90.370	340.090	6223.54	7660.93	7334.63	-2246.74	1640773.61	14321522.01	39°26'17.8961"N	80°59'55.4487"W	7671.03	342.969	0.37	0.26	-0.26		
14224.00	90.520	340.140	6222.80	7755.93	7423.96	-2279.05	1640741.31	14321611.31	39°26'18.7791"N	80°59'55.8606"W	7765.91	342.934	0.17	0.16	0.05		
14318.00	90.580	341.080	6221.90	7849.92	7512.63	-2310.26	1640710.12	14321699.94	39°26'19.6554"N	80°59'56.2583"W	7859.82	342.906	1.00	0.06	1.00		
14413.00	90.490	341.140	6221.01	7944.90	7602.50	-2341.01	1640679.38	14321789.78	39°26'20.5437"N	80°59'56.6503"W	7954.77	342.885	0.11	-0.09	0.06		
14508.00	89.940	339.860	6220.66	8039.89	7692.05	-2372.73	1640647.68	14321879.29	39°26'21.4288"N	80°59'57.0544"W	8049.69	342.857	1.47	-0.58	-1.35		
14603.00	89.940	340.040	6220.76	8134.89	7781.30	-2405.30	1640615.12	14321968.50	39°26'22.3108"N	80°59'57.4695"W	8144.57	342.823	0.19	0.00	0.19		
14697.00	90.980	340.400	6220.00	8228.89	7869.74	-2437.10	1640583.33	14322056.91	39°26'23.1850"N	80°59'57.8750"W	8238.47	342.793	1.17	1.11	0.38		
14792.00	89.690	337.680	6219.45	8323.86	7958.45	-2471.08	1640549.36	14322145.58	39°26'24.0617"N	80°59'58.3080"W	8333.25	342.751	3.17	-1.36	-2.86		
14887.00	90.650	337.890	6219.16	8418.79	8046.39	-2507.00	1640513.46	14322233.49	39°26'24.9309"N	80°59'58.7658"W	8427.90	342.695	1.03	1.01	0.22		
14982.00	91.750	339.500	6217.17	8513.74	8134.88	-2541.51	1640478.96	14322321.94	39°26'25.8054"N	80°59'59.2056"W	8522.65	342.650	2.05	1.16	1.69		
15076.00	89.660	337.290	6216.02	8607.68	8222.26	-2576.11	1640444.37	14322409.28	39°26'26.6690"N	80°59'59.6467"W	8616.37	342.604	3.24	-2.22	-2.35		
15171.00	91.260	338.500	6215.26	8702.61	8310.27	-2611.86	1640408.64	14322497.26	39°26'27.5389"N	81°00'0.1023"W	8711.05	342.552	2.11	1.68	1.27		
15266.00	89.420	338.310	6214.69	8797.56	8398.59	-2646.82	1640373.69	14322585.55	39°26'28.4118"N	81°00'0.5480"W	8805.79	342.508	1.95	-1.94	-0.20		
15361.00	91.570	337.250	6213.87	8892.48	8486.53	-2682.74	1640337.79	14322673.45	39°26'29.2809"N	81°00'1.0058"W	8900.46	342.457	2.52	2.26	-1.12		
15455.00	90.370	338.390	6212.28	8986.39	8573.56	-2718.22	1640302.32	14322760.44	39°26'30.1411"N	81°00'1.4581"W	8994.14	342.409	1.76	-1.28	1.21		
15550.00	90.030	338.310	6211.95	9081.35	8661.85	-2753.27	1640267.29	14322848.70	39°26'31.0138"N	81°00'1.9048"W	9088.91	342.367	0.37	-0.36	-0.08		
15645.00	90.400	338.220	6211.59	9176.30	8750.10	-2788.45	1640232.12	14322936.91	39°26'31.8859"N	81°00'2.3532"W	9183.67	342.324	0.40	0.39	-0.09		
15740.00	90.830	337.760	6210.57	9271.24	8838.17	-2824.05	1640196.53	14323024.95	39°26'32.7564"N	81°00'2.8070"W	9278.39	342.280	0.66	0.45	-0.48		
15834.00	90.250	338.100	6209.69	9365.17	8925.28	-2859.37	1640161.23	14323112.02	39°26'33.6173"N	81°00'3.2572"W	9372.12	342.236	0.72	-0.62	0.36		
15929.00	90.120	337.870	6209.38	9460.11	9013.35	-2894.98	1640125.83	14323200.06	39°26'34.4877"N	81°00'3.7111"W	9466.86	342.194	0.28	-0.14	-0.24		
16024.00	90.550	338.470	6208.82	9555.06	9101.54	-2930.31	1640090.32	14323288.21	39°26'35.3593"N	81°00'4.1614"W	9561.62	342.154	0.78	0.45	0.63		
16118.00	90.280	338.800	6208.14	9649.03	9189.07	-2964.55	1640056.09	14323375.71	39°26'36.2245"N	81°00'4.5979"W	9655.45	342.119	0.45	-0.29	0.35		





# Actual Wellpath Report

Garrison Unit 1H AWP Proj: 20509'  
Page 8 of 12



REFERENCE WELLPATH IDENTIFICATION			
Operator	ANTERO RESOURCES CORPORATION	Well	Garrison Unit 1H
Field	Tyler	API	47-095-02709-0000
Facility	Gorrell Pad	Wellbore	Garrison Unit 1H AWB
Slot	Slot #09		

WELLPATH DATA (227 stations)																
MD	Inclination	Azimuth	TVD	Vert Sect	North	East	Grid East	Grid North	Latitude	Longitude	Closure Dist	Closure Dir	DLS	Build Rate	Turn Rate	Comments
[ft]	[°]	[°]	[ft]	[ft]	[ft]	[ft]	[US ft]	[US ft]			[ft]	[°]	[°/100ft]	[°/100ft]	[°/100ft]	
16213.00	90.920	338.110	6207.15	9743.98	9277.43	-2999.43	1640021.22	14323464.03	39°26'37.0978"N	81°00'5.0425"W	9750.25	342.084	0.99	0.67	-0.73	
16308.00	90.400	337.710	6206.05	9838.91	9365.45	-3035.16	1639985.51	14323552.02	39°26'37.9677"N	81°00'5.4979"W	9844.99	342.044	0.69	-0.55	-0.42	
16403.00	90.340	335.980	6205.44	9933.76	9452.79	-3072.51	1639948.17	14323639.32	39°26'38.8309"N	81°00'5.9741"W	9939.60	341.994	1.82	-0.06	-1.82	
16497.00	90.430	338.770	6204.81	10027.65	9539.55	-3108.67	1639912.03	14323726.04	39°26'39.6884"N	81°00'6.4350"W	10033.28	341.951	2.97	0.10	2.97	
16592.00	90.520	338.210	6204.02	10122.81	9627.93	-3143.50	1639877.21	14323814.39	39°26'40.5619"N	81°00'6.8790"W	10128.11	341.918	0.60	0.09	-0.59	
16687.00	91.290	338.410	6202.52	10217.55	9716.19	-3178.61	1639842.12	14323902.61	39°26'41.4342"N	81°00'7.3265"W	10222.91	341.885	0.84	0.81	0.21	
16782.00	90.060	338.230	6201.40	10312.50	9804.46	-3213.70	1639807.04	14323990.85	39°26'42.3066"N	81°00'7.7738"W	10317.72	341.852	1.31	-1.29	-0.19	
16876.00	89.970	337.920	6201.38	10406.45	9891.66	-3248.80	1639771.96	14324078.02	39°26'43.1685"N	81°00'8.2212"W	10411.52	341.818	0.34	-0.10	-0.33	
16971.00	91.510	346.760	6200.15	10501.27	9982.09	-3277.59	1639743.18	14324168.40	39°26'44.0621"N	81°00'8.5882"W	10506.41	341.823	9.44	1.62	9.31	
17066.00	93.480	342.810	6196.01	10595.83	10073.65	-3302.49	1639718.29	14324259.93	39°26'44.9671"N	81°00'8.9057"W	10601.17	341.849	4.64	2.07	-4.16	
17160.00	90.400	341.370	6192.83	10689.70	10163.03	-3331.37	1639689.42	14324349.27	39°26'45.8504"N	81°00'9.2739"W	10695.10	341.851	3.62	-3.28	-1.53	
17255.00	90.580	341.140	6192.02	10784.67	10252.99	-3361.90	1639658.90	14324439.19	39°26'46.7395"N	81°00'9.6631"W	10790.09	341.846	0.31	0.19	-0.24	
17350.00	90.430	340.770	6191.18	10879.66	10342.78	-3392.90	1639627.91	14324528.95	39°26'47.6270"N	81°00'10.0583"W	10885.08	341.838	0.42	-0.16	-0.39	
17445.00	90.710	341.150	6190.23	10974.64	10432.58	-3423.89	1639596.94	14324618.72	39°26'48.5145"N	81°00'10.4533"W	10980.06	341.831	0.50	0.29	0.40	
17539.00	90.770	341.070	6189.02	11068.61	10521.51	-3454.32	1639566.52	14324707.61	39°26'49.3934"N	81°00'10.8413"W	11074.05	341.824	0.11	0.06	-0.09	
17634.00	90.220	340.140	6188.20	11163.60	10611.11	-3485.87	1639534.99	14324797.18	39°26'50.2790"N	81°00'11.2434"W	11169.02	341.814	1.14	-0.58	-0.98	
17729.00	90.430	340.640	6187.66	11258.60	10700.60	-3517.75	1639503.12	14324886.63	39°26'51.1635"N	81°00'11.6499"W	11263.99	341.802	0.57	0.22	0.53	
17823.00	90.030	340.840	6187.28	11352.59	10789.34	-3548.75	1639472.12	14324975.33	39°26'52.0405"N	81°00'12.0452"W	11357.97	341.793	0.48	-0.43	0.21	
17918.00	90.490	342.220	6186.85	11447.56	10879.44	-3578.85	1639442.04	14325065.40	39°26'52.9310"N	81°00'12.4288"W	11452.97	341.791	1.53	0.48	1.45	
18013.00	90.340	339.730	6186.16	11542.53	10969.24	-3609.81	1639411.09	14325155.16	39°26'53.8185"N	81°00'12.8236"W	11547.95	341.784	2.63	-0.16	-2.62	
18107.00	90.620	341.280	6185.38	11636.52	11057.85	-3641.18	1639379.73	14325243.73	39°26'54.6943"N	81°00'13.2235"W	11641.92	341.774	1.68	0.30	1.65	
18202.00	90.120	341.380	6184.76	11731.50	11147.85	-3671.59	1639349.33	14325333.70	39°26'55.5837"N	81°00'13.6112"W	11736.91	341.770	0.54	-0.53	0.11	
18297.00	89.880	340.990	6184.76	11826.48	11237.77	-3702.23	1639318.71	14325423.58	39°26'56.4725"N	81°00'14.0018"W	11831.91	341.766	0.48	-0.25	-0.41	
18392.00	89.690	340.940	6185.12	11921.46	11327.58	-3733.22	1639287.74	14325513.35	39°26'57.3601"N	81°00'14.3968"W	11926.90	341.759	0.21	-0.20	-0.05	
18486.00	89.820	340.850	6185.52	12015.45	11416.40	-3763.98	1639256.98	14325602.14	39°26'58.2379"N	81°00'14.7891"W	12020.89	341.753	0.17	0.14	-0.10	
18581.00	90.030	340.870	6185.65	12110.44	11506.15	-3795.13	1639225.85	14325691.85	39°26'59.1249"N	81°00'15.1862"W	12115.87	341.746	0.22	0.22	0.02	
18676.00	89.350	340.780	6186.16	12205.43	11595.87	-3826.33	1639194.66	14325781.54	39°27'0.0117"N	81°00'15.5840"W	12210.86	341.738	0.72	-0.72	-0.09	
18771.00	89.290	341.130	6187.29	12300.41	11685.67	-3857.33	1639163.67	14325871.30	39°27'0.8992"N	81°00'15.9792"W	12305.84	341.732	0.37	-0.06	0.37	
18865.00	89.320	340.770	6188.43	12394.39	11774.51	-3888.01	1639133.00	14325960.11	39°27'1.7773"N	81°00'16.3703"W	12399.83	341.726	0.38	0.03	-0.38	
18960.00	89.720	340.960	6189.22	12489.38	11864.26	-3919.15	1639101.88	14326049.82	39°27'2.6643"N	81°00'16.7673"W	12494.81	341.720	0.47	0.42	0.20	



# Actual Wellpath Report

Garrison Unit 1H AWP Proj: 20509'  
Page 9 of 12



REFERENCE WELLPATH IDENTIFICATION			
Operator	ANTERO RESOURCES CORPORATION	Well	Garrison Unit 1H
Field	Tyler	API	47-095-02709-0000
Facility	Gorrell Pad	Wellbore	Garrison Unit 1H AWB
Slot	Slot #09		

WELLPATH DATA (227 stations) † = interpolated, ‡ = extrapolated station																
MD	Inclination	Azimuth	TVD	Vert Sect	North	East	Grid East	Grid North	Latitude	Longitude	Closure Dist	Closure Dir	DLS	Build Rate	Turn Rate	Comments
[ft]	[°]	[°]	[ft]	[ft]	[ft]	[ft]	[US ft]	[US ft]			[ft]	[°]	[°/100ft]	[°/100ft]	[°/100ft]	
19055.00	90.280	340.820	6189.22	12584.37	11954.02	-3950.25	1639070.79	14326139.55	39°27'3.5514"N	81°00'17.1639"W	12589.80	341.714	0.61	0.59	-0.15	
19150.00	91.570	344.050	6187.69	12679.26	12044.57	-3978.91	1639042.14	14326230.06	39°27'4.4463"N	81°00'17.5293"W	12684.77	341.719	3.66	1.36	3.40	
19244.00	91.290	339.700	6185.34	12773.16	12133.86	-4008.14	1639012.92	14326319.31	39°27'5.3287"N	81°00'17.9020"W	12778.72	341.720	4.64	-0.30	-4.63	
19339.00	90.310	341.190	6184.02	12868.14	12223.36	-4039.93	1638981.14	14326408.78	39°27'6.2134"N	81°00'18.3073"W	12873.68	341.711	1.88	-1.03	1.57	
19434.00	90.740	341.190	6183.14	12963.12	12313.29	-4070.56	1638950.53	14326498.67	39°27'7.1021"N	81°00'18.6978"W	12968.67	341.707	0.45	0.45	0.00	
19529.00	91.290	340.190	6181.46	13058.10	12402.93	-4101.97	1638919.13	14326588.27	39°27'7.9880"N	81°00'19.0983"W	13063.64	341.700	1.20	0.58	-1.05	
19623.00	90.800	341.120	6179.75	13152.07	12491.60	-4133.10	1638888.01	14326676.91	39°27'8.8644"N	81°00'19.4953"W	13157.61	341.692	1.12	-0.52	0.99	
19718.00	90.490	340.660	6178.68	13247.06	12581.36	-4164.20	1638856.92	14326766.63	39°27'9.7515"N	81°00'19.8918"W	13252.59	341.686	0.58	-0.33	-0.48	
19813.00	90.830	340.790	6177.58	13342.04	12671.03	-4195.56	1638825.58	14326856.27	39°27'10.6378"N	81°00'20.2916"W	13347.57	341.680	0.38	0.36	0.14	
19907.00	90.650	340.970	6176.37	13436.02	12759.84	-4226.35	1638794.80	14326945.04	39°27'11.5155"N	81°00'20.6842"W	13441.56	341.674	0.27	-0.19	0.19	
20002.00	90.460	340.900	6175.45	13531.01	12849.62	-4257.37	1638763.79	14327034.79	39°27'12.4028"N	81°00'21.0798"W	13536.54	341.669	0.21	-0.20	-0.07	
20096.00	90.830	340.820	6174.39	13624.99	12938.42	-4288.19	1638732.98	14327123.55	39°27'13.2804"N	81°00'21.4728"W	13630.53	341.663	0.40	0.39	-0.09	
20191.00	90.770	340.580	6173.07	13719.98	13028.07	-4319.59	1638701.60	14327213.17	39°27'14.1665"N	81°00'21.8731"W	13725.51	341.657	0.26	-0.06	-0.25	
20286.00	89.660	340.250	6172.71	13814.97	13117.57	-4351.43	1638669.77	14327302.63	39°27'15.0511"N	81°00'22.2791"W	13820.48	341.648	1.22	-1.17	-0.35	
20380.00	89.720	340.620	6173.22	13908.97	13206.15	-4382.91	1638638.30	14327391.17	39°27'15.9264"N	81°00'22.6805"W	13914.46	341.640	0.40	0.06	0.39	
20475.00	89.780	340.860	6173.63	14003.96	13295.83	-4414.25	1638606.98	14327480.81	39°27'16.8128"N	81°00'23.0800"W	14009.45	341.634	0.26	0.06	0.25	
20509.00†	89.780	340.860	6173.76	14037.96	13327.95	-4425.39	1638595.83	14327512.92	39°27'17.1302"N	81°00'23.2222"W	14043.44	341.632	0.00	0.00	0.00	Projected MD at TD: 20509'



# Actual Wellpath Report

Garrison Unit 1H AWP Proj: 20509'  
Page 10 of 12



REFERENCE WELLPATH IDENTIFICATION			
Operator	ANTERO RESOURCES CORPORATION	Well	Garrison Unit 1H
Field	Tyler	API	47-095-02709-0000
Facility	Gorrell Pad	Wellbore	Garrison Unit 1H AWB
Slot	Slot #09		

HOLE & CASING SECTIONS - Ref Wellbore: Garrison Unit 1H AWB    Ref Wellpath: Garrison Unit 1H AWP Proj: 20509'									
String/Diameter	Start MD [ft]	End MD [ft]	Interval [ft]	Start TVD [ft]	End TVD [ft]	Start N/S [ft]	Start E/W [ft]	End N/S [ft]	End E/W [ft]
20in Conductor	30.00	110.00	80.00	30.00	110.00	0.00	0.00	-0.04	-0.10
17.5in Open Hole	110.00	643.00	533.00	110.00	642.99	-0.04	-0.10	-2.80	-1.19
13.375in Casing Surface	30.00	623.00	593.00	30.00	622.99	0.00	0.00	-2.60	-1.14
12.25in Open Hole	643.00	2629.00	1986.00	642.99	2628.12	-2.80	-1.19	-30.03	44.26
9.625in Casing Intermediate	30.00	2609.00	2579.00	30.00	2608.12	0.00	0.00	-29.96	43.87
8.75in Open Hole	2629.00	5186.00	2557.00	2628.12	5156.56	-30.03	44.26	-282.03	301.58
8.5in Open Hole	5186.00	20509.00	15323.00	5156.56	6173.76	-282.03	301.58	13327.95	-4425.39
5.5in Casing Production	30.00	20509.00	20479.00	30.00	6173.76	0.00	0.00	13327.95	-4425.39

TARGETS								
Name	TVD [ft]	North [ft]	East [ft]	Grid East [US ft]	Grid North [US ft]	Latitude	Longitude	Shape
Garrison Unit 1H POE Rev-2	6226.00	144.95	332.57	1643351.89	14314335.22	39°25'6.8354"N	80°59'22.5847"W	point
Garrison Unit 1H BHL Rev-2	6271.00	13348.63	-4465.65	1638555.60	14327533.59	39°27'17.3346"N	81°00'23.7353"W	point
Garrison Unit 1H LP Rev-2	6271.00	379.79	247.23	1643266.58	14314569.97	39°25'9.1565"N	80°59'23.6717"W	point
Garrison Unit 1H 50' L/R Hard Line	6500.00	6746.79	-2066.54	1640953.74	14320934.40	39°26'12.0862"N	80°59'53.1521"W	rectangle
2D Rectangle 14048.5 x 100.								



# Actual Wellpath Report

Garrison Unit 1H AWP Proj: 20509'  
Page 11 of 12



REFERENCE WELLPATH IDENTIFICATION			
Operator	ANTERO RESOURCES CORPORATION	Well	Garrison Unit 1H
Field	Tyler	API	47-095-02709-0000
Facility	Gorrell Pad	Wellbore	Garrison Unit 1H AWB
Slot	Slot #09		

WELLPATH COMPOSITION - Ref Wellbore: Garrison Unit 1H AWB      Ref Wellpath: Garrison Unit 1H AWP Proj: 20509'					
Start MD [ft]	End MD [ft]	Positional Uncertainty Model	Log Name/Comment	Wellbore	Survey Date
30.00	569.00	Gyrodatta 2015 - GC+WIR+DPIPE	01 Gyrodatta MS Gyro <17-1/2"> (50'-569')	Garrison Unit 1H AWB	09/Mar/2021
569.00	1100.00	Gyrodatta 2015 - GC+WIR+DPIPE	02 Gyrodatta MS Gyro <12-1/4"> (569')(650'-1100')	Garrison Unit 1H AWB	12/Mar/2021
1100.00	2553.00	BH NaviTrak (2019) (Axial Corr+HRGM)	03 APS EM <12-1/4"> (1100')(1241'-2553')	Garrison Unit 1H AWB	09/Mar/2021
2553.00	5120.00	BH NaviTrak (2019) (Axial Corr+HRGM)	04 APS EM <8-3/4"> (2553')(2658'-5120')	Garrison Unit 1H AWB	06/Apr/2021
5120.00	20509.00	BH AutoTrak Curve/eXpress (2019) (HRGM, Short spacing)	05 BH AT Curve <8-1/2"> (5120')(5142'-20475')	Garrison Unit 1H AWB	06/Apr/2021



# Actual Wellpath Report

Garrison Unit 1H AWP Proj: 20509'  
Page 12 of 12



REFERENCE WELLPATH IDENTIFICATION			
Operator	ANTERO RESOURCES CORPORATION	Well	Garrison Unit 1H
Field	Tyler	API	47-095-02709-0000
Facility	Gorrell Pad	Wellbore	Garrison Unit 1H AWB
Slot	Slot #09		

## COMMENTS

### Wellpath general comments

API: 47-095-02709-0000  
BH Job #: 110790205  
Rig: H&P 519  
Duration: 4/7/2021-4/10/2021  
Gyrodata MS Gyro <17-1/2"> (50'-569')  
Gyrodata MS Gyro <12-1/4"> (569')(650'-1100')  
APS EM <12-1/4"> (1100')(1241'-2553')  
APS EM <8-3/4"> (2553')(2658'-5120')  
BH AT Curve <8-1/2"> (5120')(5142'-20475')  
Sycamore: 6103' MD  
Middlesex: 6239' MD  
Burkett: 6405' MD  
Tully: 6461' MD  
Marcellus POE: 6471' MD  
Projected MD at TD: 20509'