



ANTERO RESOURCES CORPORATION

Location: Tyler County, WV
 Field: Tyler
 Facility: Gorrell Pad

Slot: Slot #08
 Well: Garrison Unit 2H
 Wellbore: Garrison Unit 2H PWB

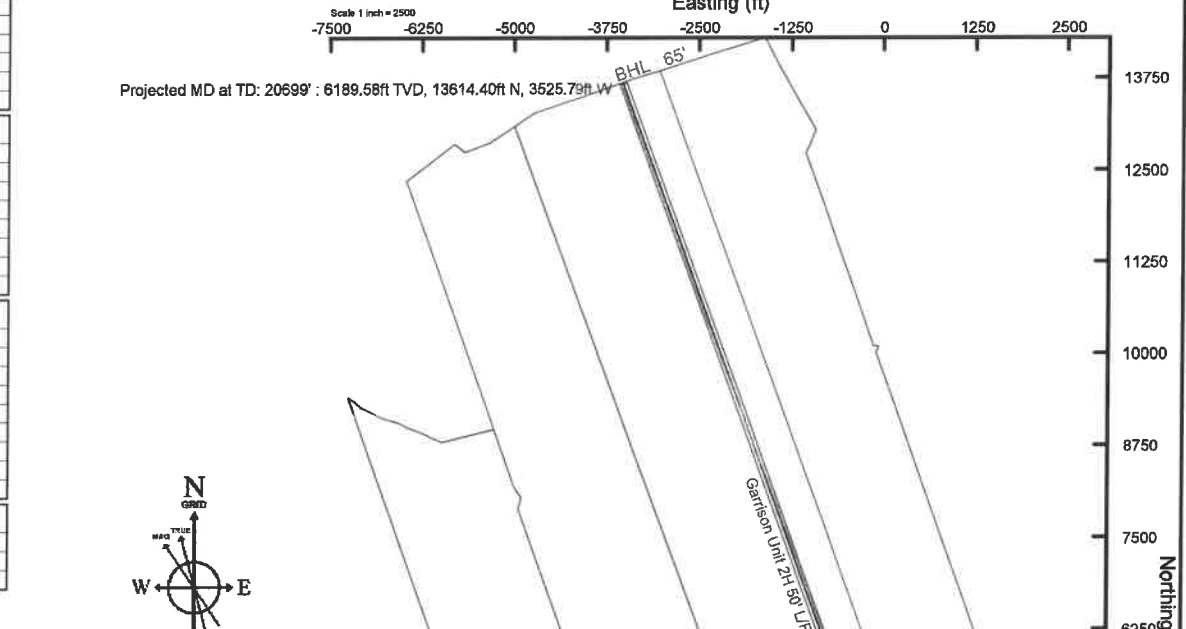
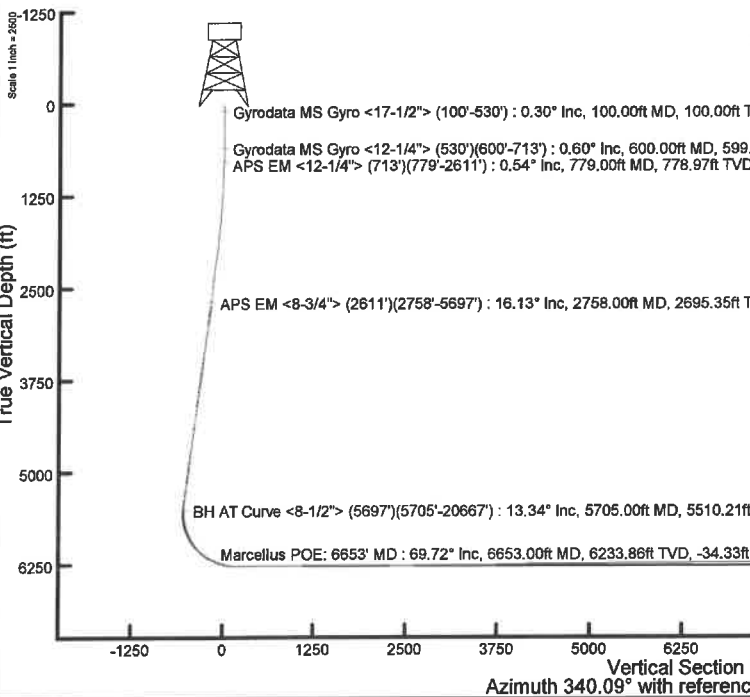


Plot reference wellpaths is Garrison Unit 2H PWP Rev-B.0	Grid System: NAD27 / UTM Zone 17 North, US feet
True vertical depths are referenced to H&P 519 (RKB)	North Reference: Grid north
Reference wellpath measured depths are referenced to H&P 519 (RKB)	Scale: True distance
H&P 519 (RKB) to Mean Sea Level: 1075 feet	Coordinates are in feet referenced to Slot
Mean Sea Level to Ground level (At Slot: Slot #08): -1045 feet	Depths are in feet
Offset wellpath MDs are referenced to each path's default MD datum	Created by: edcaryer on 2021-04-06; Database: WA_NPL_EASTERNUS_Defn

Location Information					
Facility Name	Grid East (US ft)	Grid North (US ft)	Latitude	Longitude	
Gorrell Pad	1643134.326	14314301.475	39°25'6.5020"N	80°59'25.3580"W	
Slot	Local N (ft)	Local E (ft)	Grid East (US ft)	Grid North (US ft)	Longitude
Slot #08	-103.90	-108.08	1643026.290	14314197.820	39°25'5.4752"N
Comment Garrison Unit 2H					
H&P 519 (RKB) to Ground level (At Slot: Slot #08)	30ft				
Mean Sea Level to Ground level (At Slot: Slot #08)	-1045ft				
H&P 519 (RKB) to Mean Sea Level	1075ft				

Well Profile Data							
Design Comment	MD (ft)	Inc (°)	Az (°)	TVD (ft)	Local N (ft)	Local E (ft)	VS (ft)
Tie On	2611.00	17.330	89.850	2554.96	-16.52	404.37	-153.24
Proj. to Bottom	2689.00	17.330	89.850	2629.02	-16.45	427.61	-161.09
Drill Out	2769.00	17.330	89.850	2705.39	-16.39	451.44	-169.15
End of 3D Arc	2820.43	17.068	94.993	2754.52	-17.03	466.62	-174.91
Curve KOP	5674.75	17.068	94.993	5483.13	-89.95	1304.19	-527.68
POE	6645.37	89.812	340.085	6233.00	403.92	1285.45	-57.97
Landing Pt.	6897.72	90.000	340.085	6277.00	636.30	1201.26	189.19
BHL	20754.50	90.000	340.085	6277.00	13664.45	-3518.96	14045.97

Well Data			
Slot	Well	Wellbore	Wellpath
Slot #08	Garrison Unit 2H	Garrison Unit 2H A/WB	Garrison Unit 2H AWP Proj: 20699'
Slot #08	Garrison Unit 2H	Garrison Unit 2H PWB	Garrison Unit 2H PWP Rev-B.0



User specified (HDGM) Dip: 66.27° Field: 51472 nT
 Magnetic North is 7.57 degrees West of True North (at 27/Mar/2021)
 Grid North is 0.01 degrees East of True North
 To correct azimuth from True to Grid subtract 0.01 degrees
 To correct azimuth from Magnetic to Grid subtract 7.58 degrees

API: 47-095-02710-0000
 BH Job #: 110790192
 Rig: H&P 519
 Duration: 4/1/2021-4/3/2021

Marcellus POE: 6653' MD: 69.72° Inc, 6653.00ft MD, 6233.86ft TVD, 424.70ft N, 1273.41ft E
 BH AT Curve <8-1/2> (5697')(5705'-20667') : 5510.21ft TVD, 77.14ft S, 1306.36ft E
 APS EM <8-3/4> (2611')(2758'-5697') : 2695.35ft TVD, 13.82ft S, 446.52ft E
 APS EM <12-1/4> (713')(779'-2611') : 778.97ft TVD, 5.82ft S, 2.01ft W
 Gyrodata MS Gyro <12-1/4> (530')(600'-713') : 599.98ft TVD, 4.27ft S, 1.29ft W Slot #09
 Gyrodata MS Gyro <17-1/2> (100'-530') : 100.00ft TVD, 0.03ft S, 0.16ft W



Actual Wellpath Report
 Garrison Unit 2H AWP Proj: 20699'
 Page 1 of 12



REFERENCE WELLPATH IDENTIFICATION			
Operator	ANTERO RESOURCES CORPORATION	Well	Garrison Unit 2H
Field	Tyler	API	47-095-02710-0000
Facility	Gorrell Pad	Wellbore	Garrison Unit 2H AWB
Slot	Slot #08		

REPORT SETUP INFORMATION			
Projection System	NAD27 / UTM Zone 17 North, US feet	Software System	WellArchitect® 6.0
North Reference	Grid	User	Edsaryar
Scale	0.999600	Report Generated	06/Apr/2021 at 22:25
Convergence at slot	0.01° East	Database	WA_MPL_EASTERNUS_Defn

WELLPATH LOCATION						
	Local coordinates		Grid coordinates		Geographic coordinates	
	North[ft]	East[ft]	Easting[US ft]	Northing[US ft]	Latitude	Longitude
Slot Location	-103.90	-108.08	1643026.29	14314197.62	39°25'5.4752"N	80°59'26.7353"W
Facility Reference Pt			1643134.33	14314301.48	39°25'6.5020"N	80°59'25.3580"W
Field Reference Pt			0.00	0.00	0°00'0.0000"	85°29'19.3013"W

WELLPATH DATUM			
Calculation method	Minimum curvature	H&P 519 (RKB) to Facility Vertical Datum	1075.00ft
Horizontal Reference Pt	Slot	H&P 519 (RKB) to Mean Sea Level	1075.00ft
Vertical Reference Pt	H&P 519 (RKB)	H&P 519 (RKB) to Ground Level at Slot (Slot #08)	30.00ft
MD Reference Pt	H&P 519 (RKB)	Section Origin	N 0.00, E 0.00 ft
Field Vertical Reference	Mean Sea Level	Section Azimuth	340.09°



Actual Wellpath Report

Garrison Unit 2H AWP Proj: 20699'

Page 2 of 12



REFERENCE WELLPATH IDENTIFICATION			
Operator	ANTERO RESOURCES CORPORATION	Well	Garrison Unit 2H
Field	Tyler	API	47-095-02710-0000
Facility	Gorrell Pad	Wellbore	Garrison Unit 2H AWB
Slot	Slot #08		

WELLPATH DATA (230 stations) † = interpolated, ‡ = extrapolated station																
MD	Inclination	Azimuth	TVD	Vert Sect	North	East	Grid East	Grid North	Latitude	Longitude	Closure Dist	Closure Dir	DLS	Build Rate	Turn Rate	Comments
(ft)	(°)	(°)	(ft)	(ft)	(ft)	(ft)	(US ft)	(US ft)			(ft)	(°)	("/100ft)	("/100ft)	("/100ft)	
0.00†	0.000	260.960	0.00	0.00	0.00	0.00	1643026.29	14314197.62	39°25'5.4752"N	80°59'26.7353"W	0.00	0.000	0.00	0.00	0.00	
30.00	0.000	260.960	30.00	0.00	0.00	0.00	1643026.29	14314197.62	39°25'5.4752"N	80°59'26.7353"W	0.00	0.000	0.00	0.00	0.00	
100.00	0.300	260.960	100.00	0.03	-0.03	-0.18	1643026.11	14314197.59	39°25'5.4750"N	80°59'26.7376"W	0.18	260.960	0.43	0.43	0.00	Gyrodata MS Gyro <17-1/2"> (100'-530')
200.00	0.310	201.960	200.00	-0.12	-0.32	-0.54	1643025.75	14314197.30	39°25'5.4721"N	80°59'26.7422"W	0.63	239.317	0.30	0.01	-59.00	
300.00	0.550	193.110	300.00	-0.72	-1.04	-0.75	1643025.54	14314196.58	39°25'5.4650"N	80°59'26.7448"W	1.28	215.845	0.25	0.24	-8.85	
400.00	0.570	183.670	399.99	-1.58	-2.00	-0.89	1643025.40	14314195.62	39°25'5.4554"N	80°59'26.7466"W	2.19	203.991	0.09	0.02	-9.44	
500.00	0.710	190.030	499.98	-2.57	-3.11	-1.03	1643025.26	14314194.51	39°25'5.4445"N	80°59'26.7484"W	3.28	198.347	0.16	0.14	6.36	
530.00	0.730	190.670	529.98	-2.90	-3.48	-1.10	1643025.19	14314194.14	39°25'5.4408"N	80°59'26.7493"W	3.65	197.524	0.07	0.07	2.13	
600.00	0.600	197.990	599.98	-3.57	-4.27	-1.29	1643025.00	14314193.35	39°25'5.4331"N	80°59'26.7518"W	4.46	196.878	0.22	-0.19	10.46	Gyrodata MS Gyro <12-1/4"> (530')(600'-713')
700.00	0.540	209.990	699.97	-4.29	-5.17	-1.69	1643024.80	14314192.45	39°25'5.4241"N	80°59'26.7568"W	5.44	198.111	0.13	-0.06	12.00	
713.00	0.510	211.290	712.97	-4.36	-5.28	-1.75	1643024.54	14314192.35	39°25'5.4231"N	80°59'26.7576"W	5.56	198.377	0.25	-0.23	10.00	
779.00	0.540	200.250	778.97	-4.79	-5.82	-2.01	1643024.28	14314191.80	39°25'5.4177"N	80°59'26.7609"W	6.16	199.082	0.16	0.05	-16.73	APS EM <12-1/4"> (713')(779'-2611')
870.00	1.410	133.180	869.96	-6.11	-6.99	-1.34	1643024.95	14314190.64	39°25'5.4062"N	80°59'26.7524"W	7.12	190.894	1.43	0.96	-73.70	
960.00	3.220	114.960	959.88	-8.88	-8.81	1.75	1643028.04	14314188.81	39°25'5.3882"N	80°59'26.7129"W	8.98	168.739	2.15	2.01	-20.24	
1051.00	4.820	108.300	1050.65	-13.05	-11.09	7.70	1643033.99	14314186.53	39°25'5.3656"N	80°59'26.6371"W	13.50	145.222	1.83	1.76	-7.32	
1145.00	6.180	95.820	1144.22	-17.69	-12.84	16.49	1643042.77	14314184.78	39°25'5.3483"N	80°59'26.5252"W	20.90	127.922	1.92	1.45	-13.28	
1240.00	7.440	88.360	1238.55	-21.84	-13.19	27.72	1643054.00	14314184.44	39°25'5.3449"N	80°59'26.3821"W	30.70	115.439	1.62	1.33	-7.85	
1334.00	9.130	88.960	1331.57	-26.16	-12.88	41.26	1643067.54	14314184.75	39°25'5.3479"N	80°59'26.2095"W	43.23	107.332	1.80	1.80	0.64	
1428.00	11.980	92.270	1423.97	-32.26	-13.13	58.47	1643084.74	14314184.50	39°25'5.3454"N	80°59'25.9903"W	59.93	102.654	3.10	3.03	3.52	
1523.00	14.630	90.640	1516.41	-40.19	-13.65	80.32	1643106.58	14314183.97	39°25'5.3402"N	80°59'25.7118"W	81.48	99.646	2.82	2.79	-1.72	
1618.00	15.930	91.620	1608.05	-49.19	-14.16	105.35	1643131.60	14314183.47	39°25'5.3352"N	80°59'25.3929"W	106.30	97.652	1.40	1.37	1.03	
1712.00	15.580	89.170	1698.52	-58.05	-14.34	130.87	1643157.11	14314183.29	39°25'5.3334"N	80°59'25.0678"W	131.65	96.252	0.80	-0.37	-2.61	
1807.00	15.180	85.680	1790.12	-65.56	-13.22	156.03	1643182.26	14314184.41	39°25'5.3445"N	80°59'24.7472"W	156.59	94.841	1.06	-0.42	-3.67	
1901.00	16.430	88.310	1880.57	-73.02	-11.90	181.59	1643207.81	14314185.73	39°25'5.3575"N	80°59'24.4215"W	181.98	93.748	1.53	1.33	2.80	
1996.00	18.210	93.480	1971.26	-83.12	-12.40	209.84	1643236.05	14314185.22	39°25'5.3525"N	80°59'24.0615"W	210.21	93.382	2.48	1.87	5.44	
2090.00	19.040	95.070	2060.34	-95.43	-14.65	239.77	1643265.97	14314182.98	39°25'5.3302"N	80°59'23.6801"W	240.22	93.496	1.04	0.88	1.69	
2184.00	19.400	93.460	2149.10	-108.09	-16.94	270.63	1643296.81	14314180.68	39°25'5.3075"N	80°59'23.2870"W	271.16	93.583	0.68	0.38	-1.71	
2279.00	18.870	90.610	2238.85	-119.74	-18.06	301.74	1643327.91	14314179.57	39°25'5.2964"N	80°59'22.8906"W	302.28	93.425	1.13	-0.56	-3.00	
2374.00	18.400	88.790	2328.87	-129.93	-17.91	332.09	1643358.25	14314179.72	39°25'5.2979"N	80°59'22.5038"W	332.58	93.087	0.79	-0.49	-1.92	
2468.00	18.060	86.660	2418.15	-138.84	-16.75	361.47	1643387.62	14314180.88	39°25'5.3093"N	80°59'22.1295"W	361.86	92.652	0.80	-0.36	-2.27	



Actual Wellpath Report

Garrison Unit 2H AWP Proj: 20699'
Page 3 of 12



REFERENCE WELLPATH IDENTIFICATION			
Operator	ANTERO RESOURCES CORPORATION	Well	Garrison Unit 2H
Field	Tyler	API	47-095-02710-0000
Facility	Gorrell Pad	Wellbore	Garrison Unit 2H AWB
Slot	Slot #08		

WELLPATH DATA (230 stations)																
MD	Inclination	Azimuth	TVD	Vert Sect	North	East	Grid East	Grid North	Latitude	Longitude	Closure Dist	Closure Dir	DLS	Build Rate	Turn Rate	Comments
[ft]	[°]	[°]	[ft]	[ft]	[ft]	[ft]	[US ft]	[US ft]			[ft]	[°]	[ft/100ft]	[ft/100ft]	[ft/100ft]	
2563.00	17.130	91.760	2508.71	-148.21	-16.32	390.16	1643416.29	14314181.31	39°25'5.3135"N	80°59'21.7639"W	390.50	92.395	1.89	-0.98	5.37	
2611.00	17.330	89.850	2554.56	-153.24	-16.52	404.37	1643430.50	14314181.11	39°25'5.3116"N	80°59'21.5828"W	404.71	92.339	1.25	0.42	-3.98	
2758.00	16.130	82.590	2695.35	-165.06	-13.82	446.52	1643472.63	14314183.80	39°25'5.3381"N	80°59'21.0458"W	446.74	91.773	1.64	-0.82	-4.94	APS EM <8-3/4"> (2611')(2758'-5697')
2853.00	17.930	88.150	2786.19	-172.45	-11.65	474.23	1643500.33	14314185.97	39°25'5.3596"N	80°59'20.6927"W	474.37	91.407	2.55	1.89	5.85	
2948.00	20.610	95.830	2875.87	-184.25	-12.88	505.49	1643531.58	14314184.75	39°25'5.3474"N	80°59'20.2944"W	505.65	91.459	3.88	2.82	8.08	
3045.00	20.710	94.630	2966.63	-198.79	-16.00	539.57	1643565.64	14314181.63	39°25'5.3166"N	80°59'19.8602"W	539.81	91.698	0.45	0.10	-1.24	
3140.00	20.410	94.000	3055.58	-212.48	-18.51	572.84	1643598.90	14314179.12	39°25'5.2917"N	80°59'19.4363"W	573.14	91.850	0.39	-0.32	-0.66	
3234.00	20.110	90.950	3143.77	-224.87	-19.92	605.35	1643631.39	14314177.71	39°25'5.2777"N	80°59'19.0221"W	605.67	91.885	1.17	-0.32	-3.24	
3329.00	16.340	97.310	3234.00	-236.81	-21.89	634.94	1643660.98	14314175.74	39°25'5.2582"N	80°59'18.6450"W	635.32	91.975	4.48	-3.97	6.69	
3424.00	14.140	98.840	3325.65	-248.50	-25.37	659.67	1643685.69	14314172.28	39°25'5.2237"N	80°59'18.3299"W	660.16	92.203	2.35	-2.32	1.61	
3518.00	13.970	94.090	3416.84	-258.64	-27.95	682.33	1643708.35	14314169.68	39°25'5.1982"N	80°59'18.0412"W	682.90	92.345	1.24	-0.18	-5.05	
3613.00	14.610	97.830	3508.90	-268.88	-30.40	705.64	1643731.65	14314167.23	39°25'5.1740"N	80°59'17.7442"W	706.29	92.467	1.18	0.67	3.94	
3708.00	13.840	93.490	3600.99	-278.97	-32.72	728.85	1643754.85	14314164.91	39°25'5.1510"N	80°59'17.4484"W	729.59	92.571	1.38	-0.81	-4.57	
3803.00	13.240	100.540	3693.36	-289.00	-35.40	750.89	1643776.88	14314162.23	39°25'5.1245"N	80°59'17.1676"W	751.72	92.699	1.85	-0.63	7.42	
3897.00	15.210	100.110	3784.47	-300.62	-39.54	773.61	1643799.59	14314158.10	39°25'5.0836"N	80°59'16.8781"W	774.62	92.926	2.10	2.10	-0.46	
3992.00	18.070	98.380	3875.48	-313.84	-43.87	800.46	1643826.43	14314153.76	39°25'5.0407"N	80°59'16.5360"W	801.67	93.137	3.06	3.01	-1.82	
4087.00	17.660	97.460	3965.90	-327.45	-47.89	829.33	1643855.29	14314149.75	39°25'5.0009"N	80°59'16.1682"W	830.71	93.305	0.52	-0.43	-0.97	
4182.00	16.620	90.560	4056.69	-338.83	-49.90	857.21	1643883.15	14314147.74	39°25'4.9811"N	80°59'15.8130"W	858.66	93.331	2.40	-1.09	-7.26	
4276.00	17.630	98.610	4146.54	-350.33	-52.16	884.73	1643910.66	14314145.48	39°25'4.9587"N	80°59'15.4623"W	886.26	93.374	2.74	1.07	8.56	
4371.00	17.630	97.600	4237.07	-363.84	-56.22	913.21	1643939.13	14314141.43	39°25'4.9186"N	80°59'15.0994"W	914.94	93.523	0.32	0.00	-1.06	
4466.00	16.360	94.880	4327.92	-376.10	-59.26	940.80	1643966.72	14314138.39	39°25'4.8885"N	80°59'14.7478"W	942.67	93.604	1.58	-1.34	-2.86	
4560.00	16.760	97.090	4418.03	-387.80	-62.06	967.44	1643993.35	14314135.59	39°25'4.8608"N	80°59'14.4084"W	969.43	93.670	0.79	0.43	2.35	
4655.00	18.590	95.360	4508.54	-400.49	-65.16	996.12	1644022.01	14314132.49	39°25'4.8300"N	80°59'14.0430"W	996.25	93.743	2.00	1.93	-1.82	
4750.00	20.430	92.920	4598.08	-413.39	-67.42	1027.76	1644053.63	14314130.23	39°25'4.8077"N	80°59'13.6399"W	1029.96	93.753	2.12	1.94	-2.57	
4845.00	19.770	89.960	4687.30	-425.28	-68.25	1060.38	1644086.25	14314129.39	39°25'4.7994"N	80°59'13.2242"W	1062.58	93.683	1.28	-0.69	-3.12	
4939.00	18.680	88.850	4776.05	-435.53	-67.94	1091.33	1644117.18	14314129.71	39°25'4.8024"N	80°59'12.8298"W	1093.44	93.562	1.22	-1.16	-1.18	
5034.00	17.800	83.570	4866.29	-443.80	-66.01	1120.97	1644146.81	14314131.64	39°25'4.8215"N	80°59'12.4522"W	1122.91	93.370	1.97	-0.93	-5.56	
5129.00	18.930	88.500	4956.45	-452.06	-63.98	1150.81	1644176.64	14314133.67	39°25'4.8415"N	80°59'12.0720"W	1152.59	93.182	2.02	1.19	5.19	
5223.00	18.610	95.250	5045.46	-463.25	-64.95	1180.99	1644206.81	14314132.69	39°25'4.8318"N	80°59'11.6874"W	1182.78	93.148	2.33	-0.34	7.18	
5318.00	17.590	101.730	5135.77	-477.23	-69.26	1210.14	1644235.95	14314128.39	39°25'4.7892"N	80°59'11.3160"W	1212.12	93.276	2.37	-1.07	6.82	



Actual Wellpath Report

Garrison Unit 2H AWP Proj: 20699'
Page 4 of 12



REFERENCE WELLPATH IDENTIFICATION			
Operator	ANTERO RESOURCES CORPORATION	Well	Garrison Unit 2H
Field	Tyler	API	47-095-02710-0000
Facility	Gorrell Pad	Wellbore	Garrison Unit 2H AWB
Slot	Slot #08		

WELLPATH DATA (230 stations) † = interpolated, ‡ = extrapolated station																
MD	Inclination	Azimuth	TVD	Vert Sect	North	East	Grid East	Grid North	Latitude	Longitude	Closure Dist	Closure Dir	DLS	Build Rate	Turn Rate	Comments
(ft)	(°)	(°)	(ft)	(ft)	(ft)	(ft)	(US ft)	(US ft)			(ft)	(°)	(%/100ft)	(%/100ft)	(%/100ft)	
5413.00	15.930	99.890	5226.73	-491.24	-74.42	1237.04	1644262.84	14314123.23	39°25'4.7382"N	80°59'10.9732"W	1239.28	93.443	1.83	-1.75	-1.94	
5507.00	14.210	96.420	5317.50	-502.77	-77.92	1261.22	1644287.00	14314119.73	39°25'4.7035"N	80°59'10.6652"W	1263.62	93.535	2.07	-1.83	-3.69	
5602.00	12.980	92.470	5409.84	-512.00	-79.69	1283.47	1644309.24	14314117.97	39°25'4.6860"N	80°59'10.3817"W	1285.94	93.553	1.62	-1.29	-4.16	
5697.00	13.090	76.210	5502.42	-517.21	-77.58	1304.58	1644330.35	14314120.07	39°25'4.7068"N	80°59'10.1127"W	1306.89	93.403	3.85	0.12	-17.12	
5705.00	13.340	75.760	5510.21	-517.40	-77.14	1306.36	1644332.12	14314120.51	39°25'4.7112"N	80°59'10.0901"W	1308.63	93.379	3.38	3.13	-5.62	BHAT Curve <8-1/2"> (5697')(5705'-20667')
5800.00	13.950	52.440	5602.60	-515.01	-67.45	1326.07	1644351.83	14314130.19	39°25'4.8069"N	80°59'9.8388"W	1327.79	92.912	5.79	0.64	-24.55	
5895.00	17.280	31.030	5694.15	-502.63	-48.36	1342.44	1644368.19	14314149.28	39°25'4.9956"N	80°59'9.6302"W	1343.31	92.063	6.95	3.51	-22.54	
5989.00	21.250	13.030	5782.95	-479.51	-19.77	1353.49	1644379.24	14314177.86	39°25'5.2782"N	80°59'9.4894"W	1353.64	90.837	7.55	4.22	-19.15	
6084.00	26.670	3.420	5869.76	-445.44	18.33	1358.65	1644384.39	14314215.94	39°25'5.6547"N	80°59'9.4235"W	1358.77	89.227	7.01	5.71	-10.12	
6179.00	33.550	359.250	5951.90	-401.01	65.93	1359.58	1644385.32	14314263.52	39°25'6.1251"N	80°59'9.4116"W	1361.18	87.224	7.57	7.24	-4.39	
6273.00	40.970	353.190	6026.69	-346.37	122.60	1355.58	1644381.32	14314320.17	39°25'6.6852"N	80°59'9.4625"W	1361.11	84.832	8.80	7.89	-6.45	
6281.00†	41.633	352.520	6032.70	-341.22	127.84	1354.92	1644380.67	14314325.40	39°25'6.7370"N	80°59'9.4708"W	1360.94	84.610	9.96	8.28	-8.37	Sycamore: 6281' MD
6368.00	49.050	346.210	6093.84	-280.21	188.51	1343.31	1644369.06	14314386.06	39°25'7.3367"N	80°59'9.6187"W	1356.47	82.012	9.96	8.53	-7.25	
6423.00†	53.698	344.596	6128.17	-237.44	230.07	1332.46	1644358.22	14314427.60	39°25'7.7475"N	80°59'9.7568"W	1352.18	80.203	8.75	8.45	-2.93	Middlesex: 6423' MD
6463.00	57.090	343.540	6150.88	-204.60	261.73	1323.42	1644349.18	14314459.24	39°25'8.0803"N	80°59'9.8720"W	1349.05	78.813	8.75	8.48	-2.64	
6510.00	60.890	343.450	6175.09	-164.40	300.34	1311.98	1644337.74	14314497.84	39°25'8.4420"N	80°59'10.0177"W	1345.92	77.106	8.09	8.09	-0.19	
6558.00	64.450	342.810	6197.12	-121.82	341.14	1299.60	1644325.37	14314538.62	39°25'8.8453"N	80°59'10.1753"W	1343.63	75.292	7.51	7.42	-1.33	
6591.00†	66.514	342.761	6210.82	-91.83	369.82	1290.72	1644316.49	14314567.29	39°25'9.1287"N	80°59'10.2885"W	1342.65	74.012	6.26	6.26	-0.15	Burkett: 6591' MD
6605.00	67.390	342.740	6216.30	-78.96	382.12	1286.90	1644312.67	14314579.59	39°25'9.2503"N	80°59'10.3371"W	1342.43	73.462	6.26	6.26	-0.15	
6647.00†	69.401	342.185	6231.76	-39.95	419.35	1275.13	1644300.91	14314616.80	39°25'9.6183"N	80°59'10.4870"W	1342.32	71.795	4.94	4.79	-1.32	Tully: 6647' MD
6652.00	69.640	342.120	6233.51	-35.27	423.81	1273.69	1644299.47	14314621.26	39°25'9.6624"N	80°59'10.5053"W	1342.35	71.596	4.94	4.79	-1.30	
6653.00†	69.715	342.118	6233.86	-34.33	424.70	1273.41	1644299.18	14314622.15	39°25'9.6712"N	80°59'10.5089"W	1342.36	71.556	7.55	7.55	-0.22	Marcellus POE: 6653' MD
6747.00	76.810	341.920	6260.91	55.58	510.27	1245.63	1644271.42	14314707.68	39°25'10.5169"N	80°59'10.8627"W	1346.10	67.724	7.55	7.55	-0.21	
6841.00	86.920	345.210	6274.20	148.33	599.40	1219.37	1644245.17	14314796.78	39°25'11.3979"N	80°59'11.1971"W	1358.73	63.823	11.30	10.76	3.50	
6936.00	90.770	341.100	6276.12	243.13	690.27	1191.86	1644217.67	14314887.61	39°25'12.2960"N	80°59'11.5475"W	1377.32	59.923	5.93	4.05	-4.33	
7031.00	89.780	338.360	6275.66	338.12	779.38	1158.95	1644184.78	14314976.68	39°25'13.1768"N	80°59'11.9666"W	1396.64	56.080	3.07	-1.04	-2.88	
7220.00	90.120	337.770	6275.82	527.00	954.69	1088.35	1644114.20	14315151.93	39°25'14.9096"N	80°59'12.8659"W	1447.74	48.743	0.36	0.18	-0.31	
7315.00	89.660	336.020	6276.01	621.85	1042.07	1051.07	1644076.94	14315239.27	39°25'15.7733"N	80°59'13.3408"W	1480.09	45.246	1.90	-0.48	-1.84	
7409.00	90.150	336.030	6276.16	715.61	1127.96	1012.88	1644038.76	14315325.13	39°25'16.6222"N	80°59'13.8273"W	1515.98	41.923	0.52	0.52	0.01	
7504.00	89.540	337.460	6276.42	810.45	1215.24	975.37	1644001.27	14315412.37	39°25'17.4849"N	80°59'14.3051"W	1558.25	38.751	1.64	-0.64	1.51	



Actual Wellpath Report

Garrison Unit 2H AWP Proj: 20699'
Page 5 of 12



REFERENCE WELLPATH IDENTIFICATION			
Operator	ANTERO RESOURCES CORPORATION	Well	Garrison Unit 2H
Field	Tyler	API	47-095-02710-0000
Facility	Gorrell Pad	Wellbore	Garrison Unit 2H AWB
Slot	Slot #08		

WELLPATH DATA (230 stations)																
MD	Inclination	Azimuth	TVD	Vert Sect	North	East	Grid East	Grid North	Latitude	Longitude	Closure Dist	Closure Dir	DLS	Build Rate	Turn Rate	Comments
[ft]	[°]	[°]	[ft]	[ft]	[ft]	[ft]	[US ft]	[US ft]			[ft]	[°]	["/100ft]	["/100ft]	["/100ft]	
7598.00	89.380	339.460	6277.31	904.40	1302.66	940.86	1643966.77	14315499.76	39°25'18.3490"N	80°59'14.7447"W	1606.91	35.839	2.13	-0.17	2.13	
7693.00	91.820	341.390	6276.31	999.38	1392.16	909.04	1643934.96	14315589.22	39°25'19.2336"N	80°59'15.1500"W	1662.66	33.143	3.27	2.57	2.03	
7788.00	92.620	337.880	6272.63	1094.29	1481.14	876.01	1643901.95	14315678.16	39°25'20.1130"N	80°59'15.5707"W	1720.80	30.602	3.79	0.84	-3.69	
7883.00	90.550	337.720	6270.00	1189.17	1569.06	840.13	1643866.08	14315766.05	39°25'20.9820"N	80°59'16.0278"W	1779.82	28.166	2.19	-2.18	-0.17	
7977.00	90.340	339.030	6269.27	1283.13	1656.44	805.49	1643831.45	14315853.39	39°25'21.8457"N	80°59'16.4690"W	1841.90	25.933	1.41	-0.22	1.39	
8072.00	90.150	338.620	6268.87	1378.10	1745.02	771.17	1643797.15	14315941.94	39°25'22.7213"N	80°59'16.9062"W	1907.83	23.842	0.48	-0.20	-0.43	
8167.00	90.340	339.750	6268.46	1473.09	1833.82	737.42	1643763.41	14316030.70	39°25'23.5989"N	80°59'17.3362"W	1976.53	21.906	1.21	0.20	1.19	
8261.00	89.750	339.460	6268.39	1567.08	1921.93	704.66	1643730.66	14316118.77	39°25'24.4698"N	80°59'17.7535"W	2047.03	20.135	0.70	-0.63	-0.31	
8356.00	90.000	339.580	6268.59	1662.08	2010.92	671.42	1643697.44	14316207.73	39°25'25.3494"N	80°59'18.1769"W	2120.05	18.463	0.29	0.26	0.13	
8451.00	89.720	338.280	6268.83	1757.06	2099.57	637.27	1643663.30	14316296.34	39°25'26.2256"N	80°59'18.6119"W	2194.15	16.884	1.40	-0.29	-1.37	
8545.00	90.620	339.570	6268.55	1851.03	2187.28	603.47	1643629.51	14316384.02	39°25'27.0925"N	80°59'19.0425"W	2269.00	15.424	1.67	0.96	1.37	
8640.00	89.660	338.950	6268.31	1946.02	2276.12	569.83	1643595.89	14316472.82	39°25'27.9706"N	80°59'19.4710"W	2346.36	14.055	1.20	-1.01	-0.65	
8735.00	89.080	340.170	6269.36	2041.01	2365.13	536.65	1643562.73	14316561.80	39°25'28.8504"N	80°59'19.8936"W	2425.25	12.784	1.42	-0.61	1.28	
8830.00	90.120	340.210	6270.02	2136.01	2454.50	504.46	1643530.54	14316651.14	39°25'29.7338"N	80°59'20.3037"W	2505.81	11.614	1.10	1.09	0.04	
8925.00	88.920	338.850	6270.82	2230.99	2543.50	471.24	1643497.34	14316740.10	39°25'30.6134"N	80°59'20.7269"W	2586.78	10.496	1.91	-1.26	-1.43	
9020.00	88.770	342.110	6272.73	2325.96	2633.01	439.50	1643465.62	14316829.57	39°25'31.4981"N	80°59'21.1312"W	2669.44	9.477	3.43	-0.16	3.43	
9114.00	90.400	342.110	6273.41	2419.90	2722.46	410.63	1643436.76	14316918.98	39°25'32.3822"N	80°59'21.4990"W	2753.25	8.577	1.73	1.73	0.00	
9209.00	89.510	339.910	6273.49	2514.88	2812.28	379.72	1643405.86	14317008.77	39°25'33.2700"N	80°59'21.8927"W	2837.80	7.690	2.50	-0.94	-2.32	
9304.00	91.200	344.790	6272.90	2609.77	2902.78	350.92	1643377.07	14317099.23	39°25'34.1644"N	80°59'22.2595"W	2923.91	6.893	5.44	1.78	5.14	
9399.00	90.890	339.480	6271.17	2704.66	2993.15	321.80	1643347.96	14317189.57	39°25'35.0577"N	80°59'22.6306"W	3010.40	6.136	5.60	-0.33	-5.59	
9493.00	89.910	338.630	6270.51	2798.64	3080.93	288.20	1643314.37	14317277.31	39°25'35.9253"N	80°59'23.0587"W	3094.38	5.344	1.38	-1.04	-0.90	
9588.00	90.220	339.530	6270.40	2893.62	3169.67	254.27	1643280.46	14317366.02	39°25'36.8024"N	80°59'23.4908"W	3179.85	4.587	1.00	0.33	0.95	
9683.00	90.340	340.550	6269.94	2988.62	3258.96	221.85	1643248.05	14317455.27	39°25'37.6849"N	80°59'23.9039"W	3266.50	3.894	1.08	0.13	1.07	
9778.00	90.650	340.750	6269.12	3083.61	3348.59	190.37	1643216.58	14317544.87	39°25'38.5708"N	80°59'24.3049"W	3354.00	3.254	0.39	0.33	0.21	
9872.00	90.430	340.720	6268.23	3177.60	3437.32	159.36	1643185.58	14317633.56	39°25'39.4478"N	80°59'24.7000"W	3441.02	2.654	0.24	-0.23	-0.03	
9967.00	88.890	341.040	6268.79	3272.59	3527.08	128.24	1643154.48	14317723.28	39°25'40.3350"N	80°59'25.0964"W	3529.41	2.082	1.66	-1.62	0.34	
10061.00	92.190	345.020	6267.91	3366.43	3616.95	100.82	1643127.07	14317813.12	39°25'41.2232"N	80°59'25.4458"W	3618.36	1.597	5.50	3.51	4.23	
10156.00	88.460	341.030	6267.37	3461.27	3707.78	73.09	1643099.35	14317903.91	39°25'42.1209"N	80°59'25.7990"W	3708.50	1.129	5.75	-3.93	-4.20	
10251.00	92.680	347.010	6266.42	3555.97	3799.04	46.95	1643073.23	14317995.13	39°25'43.0230"N	80°59'26.1319"W	3799.33	0.708	7.70	4.44	6.29	
10345.00	89.110	340.210	6264.95	3649.72	3889.14	20.45	1643046.73	14318085.20	39°25'43.9135"N	80°59'26.4696"W	3889.19	0.301	8.17	-3.80	-7.23	



Actual Wellpath Report

Garrison Unit 2H AWP Proj: 20699'
Page 6 of 12



REFERENCE WELLPATH IDENTIFICATION			
Operator	ANTERO RESOURCES CORPORATION	Well	Garrison Unit 2H
Field	Tyler	API	47-095-02710-0000
Facility	Gorrell Pad	Wellbore	Garrison Unit 2H AWP
Slot	Slot #08		

WELLPATH DATA (230 stations)																
MD	Inclination	Azimuth	TVD	Vert Sect	North	East	Grid East	Grid North	Latitude	Longitude	Closure Dist	Closure Dir	DLS	Build Rate	Turn Rate	Comments
(ft)	(°)	(°)	(ft)	(ft)	(ft)	(ft)	(US ft)	(US ft)			(ft)	(°)	("/100ft)	("/100ft)	("/100ft)	
10440.00	91.690	347.060	6264.29	3744.47	3980.23	-6.30	1643019.99	14318176.25	39°25'44.8138"N	80°59'26.8103"W	3980.23	359.909	7.70	2.72	7.21	
10535.00	90.520	340.770	6262.46	3839.19	4071.44	-32.60	1642993.70	14318267.42	39°25'45.7153"N	80°59'27.1454"W	4071.57	359.541	6.73	-1.23	-6.62	
10630.00	90.920	341.310	6261.26	3934.17	4161.28	-63.47	1642962.85	14318357.23	39°25'46.6033"N	80°59'27.5386"W	4161.76	359.126	0.71	0.42	0.57	
10724.00	91.200	342.840	6259.52	4028.09	4250.70	-92.39	1642933.94	14318446.61	39°25'47.4871"N	80°59'27.9071"W	4251.70	358.755	1.65	0.30	1.63	
10819.00	92.710	341.670	6256.28	4122.96	4341.12	-121.33	1642905.01	14318537.00	39°25'48.3808"N	80°59'28.2758"W	4342.82	358.399	2.01	1.59	-1.23	
10914.00	90.000	339.850	6254.04	4217.92	4430.78	-152.62	1642873.73	14318626.62	39°25'49.2670"N	80°59'28.6745"W	4433.41	358.027	3.44	-2.85	-1.92	
11008.00	89.970	339.580	6254.06	4311.92	4518.95	-185.21	1642841.16	14318714.75	39°25'50.1384"N	80°59'29.0897"W	4522.74	357.653	0.29	-0.03	-0.29	
11103.00	90.890	341.090	6253.35	4406.91	4608.40	-217.17	1642809.20	14318804.17	39°25'51.0226"N	80°59'29.4970"W	4613.52	357.302	1.86	0.97	1.59	
11198.00	90.150	341.070	6252.49	4501.89	4698.26	-247.98	1642778.41	14318894.00	39°25'51.9107"N	80°59'29.8894"W	4704.80	356.979	0.78	-0.78	-0.02	
11293.00	90.150	341.510	6252.24	4596.87	4788.24	-278.45	1642747.95	14318983.94	39°25'52.8001"N	80°59'30.2777"W	4796.33	356.672	0.46	0.00	0.46	
11388.00	90.060	340.780	6252.06	4691.85	4878.15	-309.15	1642717.26	14319073.80	39°25'53.6886"N	80°59'30.6688"W	4887.93	356.374	0.77	-0.09	-0.77	
11482.00	91.140	341.100	6251.08	4785.84	4966.99	-339.85	1642686.58	14319162.61	39°25'54.5667"N	80°59'31.0599"W	4978.60	356.086	1.20	1.15	0.34	
11577.00	90.250	337.190	6249.93	4880.80	5055.74	-373.66	1642652.78	14319251.32	39°25'55.4439"N	80°59'31.4907"W	5069.53	355.773	4.22	-0.94	-4.12	
11672.00	90.490	340.380	6249.31	4975.76	5144.29	-408.03	1642618.42	14319339.84	39°25'56.3191"N	80°59'31.9286"W	5160.44	355.465	3.37	0.25	3.36	
11766.00	90.090	341.100	6248.84	5069.75	5233.02	-439.04	1642587.43	14319428.54	39°25'57.1962"N	80°59'32.3237"W	5251.41	355.204	0.88	-0.43	0.77	
11861.00	90.680	341.020	6248.20	5164.73	5322.88	-469.87	1642556.61	14319518.36	39°25'58.0843"N	80°59'32.7166"W	5343.57	354.955	0.63	0.62	-0.08	
11956.00	90.460	340.990	6247.25	5259.72	5412.70	-500.79	1642525.70	14319608.14	39°25'58.9721"N	80°59'33.1105"W	5435.82	354.714	0.23	-0.23	-0.03	
12050.00	90.400	338.840	6246.55	5353.71	5500.97	-533.07	1642493.44	14319696.38	39°25'59.8445"N	80°59'33.5218"W	5526.74	354.465	2.29	-0.06	-2.29	
12145.00	90.150	336.760	6246.09	5448.62	5588.93	-568.96	1642457.56	14319784.30	39°26'0.7138"N	80°59'33.9791"W	5617.81	354.187	2.21	-0.26	-2.19	
12239.00	90.220	339.280	6245.79	5542.56	5676.09	-604.14	1642422.39	14319871.42	39°26'1.5753"N	80°59'34.4274"W	5708.15	353.925	2.68	0.07	2.68	
12334.00	90.890	340.870	6244.87	5637.55	5765.39	-636.51	1642390.03	14319960.69	39°26'2.4580"N	80°59'34.8399"W	5800.42	353.700	1.82	0.71	1.67	
12429.00	90.120	341.270	6244.03	5732.53	5855.25	-667.33	1642359.23	14320050.52	39°26'3.3461"N	80°59'35.2326"W	5893.16	353.498	0.91	-0.81	0.42	
12523.00	90.220	339.460	6243.75	5826.52	5943.78	-698.91	1642327.66	14320139.01	39°26'4.2211"N	80°59'35.6350"W	5984.73	353.294	1.93	0.11	-1.93	
12618.00	90.710	341.230	6242.98	5921.52	6033.24	-730.87	1642295.72	14320228.43	39°26'5.1053"N	80°59'36.0422"W	6077.35	353.093	1.93	0.52	1.86	
12712.00	90.460	340.610	6242.02	6015.50	6122.07	-761.59	1642265.00	14320317.23	39°26'5.9833"N	80°59'36.4337"W	6169.26	352.909	0.71	-0.27	-0.66	
12807.00	90.800	340.560	6240.98	6110.49	6211.66	-793.17	1642233.44	14320406.78	39°26'6.8688"N	80°59'36.8360"W	6262.10	352.723	0.36	0.36	-0.05	
12902.00	90.120	340.500	6240.21	6205.48	6301.23	-824.83	1642201.79	14320496.31	39°26'7.7540"N	80°59'37.2395"W	6354.98	352.542	0.72	-0.72	-0.06	
12997.00	90.280	341.010	6239.88	6300.48	6390.92	-856.14	1642170.49	14320585.97	39°26'8.6405"N	80°59'37.6385"W	6448.01	352.370	0.56	0.17	0.54	
13091.00	90.890	340.690	6238.92	6394.46	6479.71	-886.98	1642139.67	14320674.72	39°26'9.5181"N	80°59'38.0314"W	6540.13	352.205	0.73	0.65	-0.34	
13186.00	90.150	341.270	6238.06	6489.45	6569.52	-917.94	1642108.72	14320764.50	39°26'10.4057"N	80°59'38.4259"W	6633.34	352.046	0.99	-0.78	0.61	



Actual Wellpath Report

Garrison Unit 2H AWP Proj: 20699'
Page 7 of 12



REFERENCE WELLPATH IDENTIFICATION			
Operator	ANTERO RESOURCES CORPORATION	Well	Garrison Unit 2H
Field	Tyler	API	47-095-02710-0000
Facility	Gorrell Pad	Wellbore	Garrison Unit 2H AWB
Slot	Slot #08		

WELLPATH DATA (230 stations)																	
MD [ft]	Inclination [°]	Azimuth [°]	TVD [ft]	Vert Sect [ft]	North [ft]	East [ft]	Grid East [US ft]	Grid North [US ft]	Latitude	Longitude	Closure Dist [ft]	Closure Dir [°]	DLS [°/100ft]	Build Rate [°/100ft]	Turn Rate [°/100ft]	Comments	
13280.00	90.150	341.080	6237.81	6583.43	6658.49	-948.27	1642078.40	14320853.43	39°26'11.2851"N	80°59'38.8124"W	6725.67	351.895	0.20	0.00	-0.20		
13375.00	90.250	341.740	6237.48	6678.40	6748.53	-978.55	1642048.13	14320943.44	39°26'12.1751"N	80°59'39.1983"W	6819.11	351.749	0.70	0.11	0.69		
13470.00	91.230	340.120	6236.25	6773.38	6838.31	-1009.59	1642017.11	14321033.18	39°26'13.0624"N	80°59'39.5938"W	6912.43	351.602	1.99	1.03	-1.71		
13564.00	89.940	338.360	6235.30	6867.36	6926.19	-1042.90	1641983.81	14321121.03	39°26'13.9310"N	80°59'40.0183"W	7004.27	351.437	2.32	-1.37	-1.87		
13659.00	90.770	340.820	6234.71	6962.35	7015.22	-1076.03	1641950.69	14321210.02	39°26'14.8109"N	80°59'40.4405"W	7097.26	351.280	2.73	0.87	2.59		
13754.00	90.310	339.460	6233.81	7057.34	7104.56	-1108.30	1641918.43	14321299.33	39°26'15.6940"N	80°59'40.8517"W	7190.49	351.133	1.51	-0.48	-1.43		
13848.00	90.620	338.900	6233.05	7151.32	7192.42	-1141.71	1641885.04	14321387.15	39°26'16.5623"N	80°59'41.2775"W	7282.47	350.980	0.68	0.33	-0.60		
13943.00	90.430	339.140	6232.18	7246.30	7281.12	-1175.72	1641851.04	14321475.81	39°26'17.4390"N	80°59'41.7109"W	7375.43	350.827	0.32	-0.20	0.25		
14037.00	90.340	339.530	6231.55	7340.29	7369.07	-1208.90	1641817.88	14321563.73	39°26'18.3083"N	80°59'42.1336"W	7467.57	350.684	0.43	-0.10	0.41		
14132.00	90.310	338.770	6231.01	7435.28	7457.85	-1242.71	1641784.08	14321652.47	39°26'19.1857"N	80°59'42.5645"W	7560.67	350.540	0.80	-0.03	-0.80		
14227.00	90.400	338.440	6230.42	7530.24	7546.30	-1277.36	1641749.44	14321740.88	39°26'20.0599"N	80°59'43.0062"W	7653.64	350.393	0.36	0.09	-0.35		
14322.00	90.520	338.250	6229.66	7625.20	7634.59	-1312.42	1641714.40	14321829.14	39°26'20.9326"N	80°59'43.4529"W	7746.57	350.246	0.24	0.13	-0.20		
14417.00	91.050	339.230	6228.35	7720.16	7723.12	-1346.86	1641679.97	14321917.63	39°26'21.8075"N	80°59'43.8919"W	7839.68	350.107	1.17	0.56	1.03		
14511.00	90.150	340.440	6227.37	7814.15	7811.35	-1379.26	1641647.58	14322005.83	39°26'22.6796"N	80°59'44.3048"W	7932.18	349.966	1.60	-0.96	1.29		
14606.00	90.030	339.950	6227.22	7909.15	7900.73	-1411.45	1641615.41	14322095.17	39°26'23.5630"N	80°59'44.7150"W	8025.81	349.871	0.53	-0.13	-0.52		
14701.00	90.090	339.500	6227.12	8004.15	7989.84	-1444.37	1641582.50	14322184.25	39°26'24.4438"N	80°59'45.1345"W	8119.34	349.753	0.48	0.06	-0.47		
14795.00	90.000	339.660	6227.05	8098.14	8077.93	-1477.17	1641549.72	14322272.31	39°26'25.3144"N	80°59'45.5525"W	8211.88	349.637	0.20	-0.10	0.17		
14890.00	90.250	339.480	6226.84	8193.14	8166.96	-1510.33	1641516.57	14322361.29	39°26'26.1943"N	80°59'45.9751"W	8305.44	349.523	0.32	0.26	-0.19		
14984.00	90.250	339.060	6226.43	8287.13	8254.87	-1543.60	1641483.31	14322449.17	39°26'27.0632"N	80°59'46.3991"W	8397.95	349.408	0.45	0.00	-0.45		
15079.00	90.460	339.070	6225.84	8382.11	8343.60	-1577.54	1641449.38	14322537.86	39°26'27.9402"N	80°59'46.8317"W	8491.42	349.293	0.22	0.22	0.01		
15174.00	90.090	337.190	6225.39	8477.05	8431.76	-1612.93	1641414.01	14322625.99	39°26'28.8115"N	80°59'47.2827"W	8584.64	349.171	2.02	-0.39	-1.98		
15268.00	91.140	339.180	6224.38	8570.99	8519.01	-1647.86	1641379.10	14322713.21	39°26'29.6739"N	80°59'47.7279"W	8676.92	349.052	2.39	1.12	2.12		
15363.00	90.550	340.020	6222.98	8665.97	8608.04	-1680.97	1641346.00	14322802.20	39°26'30.5538"N	80°59'48.1498"W	8770.64	348.950	1.08	-0.62	0.88		
15458.00	90.490	339.450	6222.11	8760.97	8697.16	-1713.87	1641313.11	14322891.28	39°26'31.4346"N	80°59'48.5692"W	8864.42	348.852	0.60	-0.06	-0.60		
15552.00	90.520	339.220	6221.28	8854.95	8785.11	-1747.04	1641279.95	14322979.20	39°26'32.3039"N	80°59'48.9920"W	8957.14	348.753	0.25	0.03	-0.24		
15647.00	89.940	339.630	6220.90	8949.95	8874.05	-1780.43	1641246.58	14323068.10	39°26'33.1829"N	80°59'49.4175"W	9050.89	348.655	0.75	-0.61	0.43		
15742.00	90.460	339.390	6220.57	9044.94	8963.04	-1813.68	1641213.34	14323157.05	39°26'34.0624"N	80°59'49.8413"W	9144.70	348.561	0.60	0.55	-0.25		
15837.00	90.310	338.510	6219.93	9139.92	9051.69	-1847.80	1641179.23	14323245.67	39°26'34.9387"N	80°59'50.2762"W	9238.37	348.462	0.94	-0.16	-0.93		
15932.00	90.120	339.190	6219.58	9234.90	9140.29	-1882.08	1641144.97	14323334.24	39°26'35.8144"N	80°59'50.7131"W	9332.05	348.365	0.74	-0.20	0.72		
16026.00	90.030	339.300	6219.45	9328.89	9228.19	-1915.39	1641111.67	14323422.10	39°26'36.6831"N	80°59'51.1376"W	9424.87	348.274	0.15	-0.10	0.12		



Actual Wellpath Report

Garrison Unit 2H AWP Proj: 20699'
Page 8 of 12



REFERENCE WELLPATH IDENTIFICATION			
Operator	ANTERO RESOURCES CORPORATION	Well	Garrison Unit 2H
Field	Tyler	API	47-095-02710-0000
Facility	Gorrell Pad	Wellbore	Garrison Unit 2H AWB
Slot	Slot #08		

WELLPATH DATA (230 stations)																
MD [ft]	Inclination [°]	Azimuth [°]	TVD [ft]	Vert Sect [ft]	North [ft]	East [ft]	Grid East [US ft]	Grid North [US ft]	Latitude	Longitude	Closure Dist [ft]	Closure Dir [°]	DLS [°/100ft]	Build Rate [°/100ft]	Turn Rate [°/100ft]	Comments
16121.00	90.340	339.180	6219.15	9423.87	9317.02	-1949.06	1641078.01	14323510.90	39°26'37.5611"N	80°59'51.5668"W	9518.71	348.184	0.35	0.33	-0.13	
16216.00	90.280	339.380	6218.63	9518.86	9405.88	-1982.67	1641044.41	14323599.72	39°26'38.4393"N	80°59'51.9952"W	9612.57	348.097	0.22	-0.06	0.21	
16311.00	90.580	339.320	6217.92	9613.85	9494.77	-2016.17	1641010.93	14323688.58	39°26'39.3179"N	80°59'52.4222"W	9706.48	348.012	0.32	0.32	-0.06	
16405.00	90.310	339.200	6217.19	9707.84	9582.68	-2049.46	1640977.65	14323776.45	39°26'40.1867"N	80°59'52.8465"W	9799.39	347.928	0.31	-0.29	-0.13	
16500.00	90.150	339.260	6216.81	9802.83	9671.50	-2083.15	1640943.98	14323865.24	39°26'41.0646"N	80°59'53.2758"W	9893.31	347.845	0.18	-0.17	0.06	
16595.00	90.030	339.370	6216.66	9897.82	9760.38	-2116.71	1640910.43	14323954.08	39°26'41.9430"N	80°59'53.7036"W	9987.26	347.764	0.17	-0.13	0.12	
16689.00	89.940	339.560	6216.68	9991.81	9848.41	-2149.68	1640877.47	14324042.07	39°26'42.8130"N	80°59'54.1238"W	10080.29	347.687	0.22	-0.10	0.20	
16784.00	89.750	339.610	6216.94	10086.81	9937.44	-2182.82	1640844.35	14324131.06	39°26'43.6930"N	80°59'54.5462"W	10174.35	347.611	0.21	-0.20	0.05	
16879.00	90.710	340.250	6216.56	10181.81	10026.67	-2215.42	1640811.76	14324220.26	39°26'44.5749"N	80°59'54.9617"W	10268.50	347.541	1.21	1.01	0.67	
16973.00	90.680	338.190	6215.42	10275.78	10114.54	-2248.76	1640778.43	14324308.10	39°26'45.4434"N	80°59'55.3868"W	10361.51	347.465	2.19	-0.03	-2.19	
17068.00	90.520	339.410	6214.42	10370.75	10203.11	-2283.11	1640744.09	14324396.62	39°26'46.3187"N	80°59'55.8246"W	10455.43	347.387	1.30	-0.17	1.28	
17163.00	90.280	339.230	6213.76	10465.74	10291.98	-2316.66	1640710.56	14324485.47	39°26'47.1971"N	80°59'56.2523"W	10549.49	347.314	0.32	-0.25	-0.19	
17258.00	90.430	338.360	6213.17	10560.72	10380.55	-2351.02	1640676.21	14324573.99	39°26'48.0725"N	80°59'56.6903"W	10643.45	347.239	0.93	0.16	-0.92	
17352.00	90.460	338.780	6212.44	10654.68	10468.05	-2385.37	1640641.88	14324661.46	39°26'48.9372"N	80°59'57.1280"W	10736.39	347.163	0.45	0.03	0.45	
17447.00	90.800	339.710	6211.40	10749.66	10556.87	-2419.03	1640608.23	14324750.25	39°26'49.8152"N	80°59'57.5571"W	10830.48	347.094	1.04	0.36	0.98	
17542.00	90.250	339.640	6210.53	10844.66	10645.96	-2452.03	1640575.25	14324839.30	39°26'50.6956"N	80°59'57.9777"W	10924.69	347.030	0.58	-0.58	-0.07	
17637.00	90.520	339.510	6209.89	10939.65	10734.98	-2485.18	1640542.11	14324928.29	39°26'51.5755"N	80°59'58.4003"W	11018.89	346.965	0.32	0.28	-0.14	
17731.00	90.770	339.640	6208.83	11033.64	10823.07	-2517.98	1640509.32	14325016.33	39°26'52.4461"N	80°59'58.8184"W	11112.11	346.903	0.30	0.27	0.14	
17826.00	90.830	339.300	6207.50	11128.62	10912.02	-2551.29	1640476.02	14325105.26	39°26'53.3253"N	80°59'59.2431"W	11206.31	346.840	0.36	0.06	-0.36	
17921.00	90.580	339.730	6206.34	11223.61	11001.01	-2584.54	1640442.79	14325194.21	39°26'54.2048"N	80°59'59.6668"W	11300.53	346.779	0.52	-0.26	0.45	
18015.00	90.650	339.430	6205.33	11317.60	11089.10	-2617.33	1640410.01	14325282.26	39°26'55.0754"N	81°00'0.0849"W	11393.79	346.720	0.33	0.07	-0.32	
18110.00	90.000	339.360	6204.79	11412.59	11178.02	-2650.76	1640376.59	14325371.14	39°26'55.9542"N	81°00'0.5111"W	11488.02	346.659	0.69	-0.68	-0.07	
18205.00	90.490	339.650	6204.38	11507.59	11267.00	-2684.03	1640343.34	14325460.09	39°26'56.8337"N	81°00'0.9351"W	11582.29	346.601	0.60	0.52	0.31	
18300.00	90.400	339.240	6203.64	11602.58	11355.95	-2717.38	1640310.00	14325549.01	39°26'57.7128"N	81°00'1.3602"W	11676.55	346.543	0.44	-0.09	-0.43	
18394.00	90.180	339.780	6203.17	11696.57	11444.00	-2750.28	1640277.11	14325637.02	39°26'58.5831"N	81°00'1.7797"W	11769.85	346.487	0.62	-0.23	0.57	
18489.00	90.310	339.090	6202.76	11791.56	11532.95	-2783.65	1640243.76	14325725.93	39°26'59.4622"N	81°00'2.2051"W	11864.13	346.430	0.74	0.14	-0.73	
18584.00	90.090	339.360	6202.43	11886.55	11621.77	-2817.35	1640210.07	14325814.72	39°27'0.3400"N	81°00'2.6346"W	11958.39	346.373	0.37	-0.23	0.28	
18678.00	90.030	339.440	6202.33	11980.55	11709.76	-2850.42	1640177.01	14325902.67	39°27'1.2097"N	81°00'3.0563"W	12051.70	346.319	0.11	-0.06	0.09	
18773.00	90.180	339.600	6202.16	12075.54	11798.78	-2883.66	1640143.79	14325991.63	39°27'2.0892"N	81°00'3.4800"W	12146.03	346.266	0.23	0.16	0.17	
18868.00	90.150	340.930	6201.88	12170.54	11888.17	-2915.74	1640111.72	14326081.01	39°27'2.9730"N	81°00'3.8889"W	12240.51	346.219	1.40	-0.03	1.40	



Actual Wellpath Report

Garrison Unit 2H AWP Proj: 20699'
Page 9 of 12



REFERENCE WELLPATH IDENTIFICATION			
Operator	ANTERO RESOURCES CORPORATION	Well	Garrison Unit 2H
Field	Tyler	API	47-095-02710-0000
Facility	Gorrell Pad	Wellbore	Garrison Unit 2H AWB
Slot	Slot #08		

WELLPATH DATA (230 stations) † = interpolated, ‡ = extrapolated station																	
MD	Inclination	Azimuth	TVD	Vert Sect	North	East	Grid East	Grid North	Latitude	Longitude	Closure Dist	Closure Dir	DLS	Build Rate	Turn Rate	Comments	
(ft)	(°)	(°)	(ft)	(ft)	(ft)	(ft)	(US ft)	(US ft)			(ft)	(°)	(ft/100ft)	(ft/100ft)	(ft/100ft)		
18963.00	90.000	340.010	6201.76	12265.53	11977.71	-2947.50	1640079.98	14326170.51	39°27'3.8579"N	81°00'4.2938"W	12335.04	346.175	0.98	-0.16	-0.97		
19057.00	89.910	340.980	6201.83	12359.53	12066.31	-2978.88	1640048.61	14326259.08	39°27'4.7336"N	81°00'4.6939"W	12428.58	346.132	1.04	-0.10	1.03		
19152.00	89.780	339.870	6202.09	12454.53	12155.82	-3010.71	1640016.79	14326348.55	39°27'5.6182"N	81°00'5.0996"W	12523.11	346.089	1.18	-0.14	-1.17		
19246.00	89.910	340.330	6202.34	12548.53	12244.20	-3042.71	1639984.81	14326436.90	39°27'6.4918"N	81°00'5.5075"W	12616.60	346.045	0.51	0.14	0.49		
19341.00	89.790	340.400	6202.60	12643.53	12333.68	-3074.83	1639952.90	14326526.34	39°27'7.3761"N	81°00'5.9145"W	12711.14	346.002	0.16	-0.14	0.07		
19436.00	90.030	340.320	6202.76	12738.52	12423.15	-3106.56	1639920.98	14326615.78	39°27'8.2604"N	81°00'6.3216"W	12805.68	345.960	0.28	0.26	-0.08		
19530.00	90.460	340.150	6202.36	12832.52	12511.61	-3138.35	1639889.21	14326704.21	39°27'9.1347"N	81°00'6.7268"W	12899.21	345.919	0.49	0.46	-0.18		
19625.00	90.550	340.070	6201.52	12927.52	12600.94	-3170.66	1639856.90	14326793.50	39°27'10.0176"N	81°00'7.1389"W	12993.73	345.876	0.13	0.09	-0.08		
19720.00	90.220	340.490	6200.88	13022.52	12690.37	-3202.72	1639824.86	14326882.89	39°27'10.9014"N	81°00'7.5475"W	13088.27	345.836	0.56	-0.35	0.44		
19815.00	91.380	342.270	6199.56	13117.48	12780.38	-3233.05	1639794.54	14326972.87	39°27'11.7910"N	81°00'7.9342"W	13182.97	345.804	2.24	1.22	1.87		
19910.00	89.910	339.900	6198.49	13212.45	12870.24	-3263.84	1639763.76	14327062.69	39°27'12.6791"N	81°00'8.3267"W	13277.64	345.770	2.94	-1.55	-2.49		
20004.00	90.150	340.190	6198.44	13306.45	12958.60	-3295.92	1639731.70	14327151.01	39°27'13.5524"N	81°00'8.7357"W	13371.17	345.730	0.40	0.26	0.31		
20099.00	90.090	340.790	6198.24	13401.44	13048.14	-3327.65	1639699.98	14327240.51	39°27'14.4374"N	81°00'9.1402"W	13465.78	345.693	0.63	-0.06	0.63		
20193.00	90.250	341.230	6197.96	13495.43	13137.02	-3358.23	1639669.41	14327329.36	39°27'15.3158"N	81°00'9.5302"W	13559.47	345.660	0.50	0.17	0.47		
20288.00	91.260	340.650	6196.71	13590.41	13226.81	-3389.25	1639638.40	14327419.11	39°27'16.2032"N	81°00'9.9257"W	13654.14	345.628	1.23	1.06	-0.61		
20383.00	90.650	340.530	6195.12	13685.39	13316.39	-3420.82	1639606.85	14327508.66	39°27'17.0886"N	81°00'10.3281"W	13748.76	345.593	0.65	-0.64	-0.13		
20478.00	91.140	341.040	6193.64	13780.37	13406.09	-3452.08	1639575.60	14327598.32	39°27'17.9751"N	81°00'10.7267"W	13843.41	345.560	0.74	0.52	0.54		
20572.00	91.010	340.300	6191.88	13874.35	13494.77	-3483.19	1639544.50	14327686.97	39°27'18.8516"N	81°00'11.1234"W	13937.06	345.527	0.80	-0.14	-0.79		
20667.00	91.050	340.460	6190.17	13969.34	13584.24	-3515.08	1639512.62	14327776.40	39°27'19.7359"N	81°00'11.5300"W	14031.66	345.492	0.17	0.04	0.17		
20699.00‡	91.050	340.460	6189.58	14001.33	13614.40	-3525.79	1639501.92	14327806.54	39°27'20.0339"N	81°00'11.6664"W	14063.53	345.481	0.00	0.00	0.00	Projected MD at TD: 20699'	



Actual Wellpath Report

Garrison Unit 2H AWP Proj: 20699'
Page 10 of 12



REFERENCE WELLPATH IDENTIFICATION

Operator	ANTERO RESOURCES CORPORATION	Well	Garrison Unit 2H
Field	Tyler	API	47-095-02710-0000
Facility	Gorrell Pad	Wellbore	Garrison Unit 2H AWB
Slot	Slot #08		

HOLE & CASING SECTIONS - Ref Wellbore: Garrison Unit 2H AWB Ref Wellpath: Garrison Unit 2H AWP Proj: 20699'

String/Diameter	Start MD [ft]	End MD [ft]	Interval [ft]	Start TVD [ft]	End TVD [ft]	Start N/S [ft]	Start E/W [ft]	End N/S [ft]	End E/W [ft]
20in Conductor	30.00	110.00	80.00	30.00	110.00	0.00	0.00	-0.04	-0.23
17.5in Open Hole	110.00	632.00	522.00	110.00	631.98	-0.04	-0.23	-4.58	-1.41
13.375in Casing Surface	30.00	616.90	586.90	30.00	616.88	0.00	0.00	-4.43	-1.35
12.25in Open Hole	632.00	2689.00	2057.00	631.98	2629.16	-4.58	-1.41	-15.73	427.15
9.625in Casing Intermediate	30.00	2659.10	2629.10	30.00	2600.53	0.00	0.00	-16.20	418.53
8.75in Open Hole	2689.00	5781.00	3092.00	2629.16	5584.14	-15.73	427.15	-70.08	1322.38
8.5in Open Hole	5781.00	20699.00	14918.00	5584.14	6189.58	-70.08	1322.38	13614.40	-3525.79
5.5in Casing Production	30.00	20699.00	20669.00	30.00	6189.58	0.00	0.00	13614.40	-3525.79

TARGETS

Name	TVD [ft]	North [ft]	East [ft]	Grid East [US ft]	Grid North [US ft]	Latitude	Longitude	Shape
Garrison Unit 2H POE Rev-2	6233.00	403.92	1285.45	1644311.22	14314601.38	39°25'9.4658"N	80°59'10.3555"W	point
Garrison Unit 2H BHL Rev-2	6277.00	13664.45	-3518.66	1639509.04	14327856.58	39°27'20.5286"N	81°00'11.5757"W	point
Garrison Unit 2H LP Rev-2	6277.00	636.31	1201.26	1644227.06	14314833.67	39°25'11.7627"N	80°59'11.4278"W	point
Garrison Unit 2H 50' L/R Hard Line	6500.00	7034.19	-1116.61	1641910.13	14321228.98	39°26'14.9984"N	80°59'40.9576"W	rectangle
2D Rectangle 14103.9 x 100.								



Actual Wellpath Report

Garrison Unit 2H AWP Proj: 20699'

Page 11 of 12



REFERENCE WELLPATH IDENTIFICATION			
Operator	ANTERO RESOURCES CORPORATION	Well	Garrison Unit 2H
Field	Tyler	API	47-095-02710-0000
Facility	Gorrell Pad	Wellbore	Garrison Unit 2H AWB
Slot	Slot #08		

WELLPATH COMPOSITION - Ref Wellbore: Garrison Unit 2H AWB		Ref Wellpath: Garrison Unit 2H AWP Proj: 20699'		Wellbore	Survey Date
Start MD [ft]	End MD [ft]	Positional Uncertainty Model	Log Name/Comment		
30.00	530.00	Gyrodata 2015 - GC+WIR+DPIPE	01 Gyrodata MS Gyro <17-1/2"> (100'-530')	Garrison Unit 2H AWB	06/Mar/2021
530.00	713.00	Gyrodata 2015 - GC+WIR+DPIPE	02 Gyrodata MS Gyro <12-1/4"> (530')(600'-713')	Garrison Unit 2H AWB	09/Mar/2021
713.00	2611.00	BH NaviTrak (2019) (Axial Corr+HRGM)	03 APS EM <12-1/4"> (713')(779'-2611')	Garrison Unit 2H AWB	06/Mar/2021
2611.00	5697.00	BH NaviTrak (2019) (Axial Corr+HRGM)	04 APS EM <8-3/4"> (2611')(2758'-5697')	Garrison Unit 2H AWB	27/Mar/2021
5697.00	20699.00	BH AutoTrak Curve/eXpress (2019) (HRGM, Short spacing)	05 BH AT Curve <8-1/2"> (5697')(5705'-20667')	Garrison Unit 2H AWB	27/Mar/2021



Actual Wellpath Report

Garrison Unit 2H AWP Proj: 20699'
Page 12 of 12



REFERENCE WELLPATH IDENTIFICATION			
Operator	ANTERO RESOURCES CORPORATION	Well	Garrison Unit 2H
Field	Tyler	API	47-095-02710-0000
Facility	Gorrell Pad	Wellbore	Garrison Unit 2H AWB
Slot	Slot #08		

COMMENTS

Wellpath general comments

API: 47-095-02710-0000
BH Job #: 110790192
Rig: H&P 519
Duration: 4/1/2021-4/3/2021
Gyrodatta MS Gyro <17-1/2"> (100'-530')
Gyrodatta MS Gyro <12-1/4"> (530')(600'-713')
APS EM <12-1/4"> (713')(779'-2611')
APS EM <8-3/4"> (2611')(2758'-5697')
BH AT Curve <8-1/2"> (5697')(5705'-20667')
Sycamore: 6281' MD
Middlesex: 6423' MD
Burkett: 6591' MD
Tully: 6647' MD
Marcellus POE: 6653' MD
Projected MD at TD: 20699'