



ANTERO RESOURCES CORPORATION

Location: Tyler County, WV
 Field: Tyler
 Facility: Elk Fork Pad

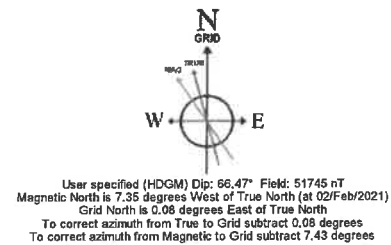
Slot: Slot #03
 Well: Cheat Unit 1H
 Wellbore: Cheat Unit 1H PWB



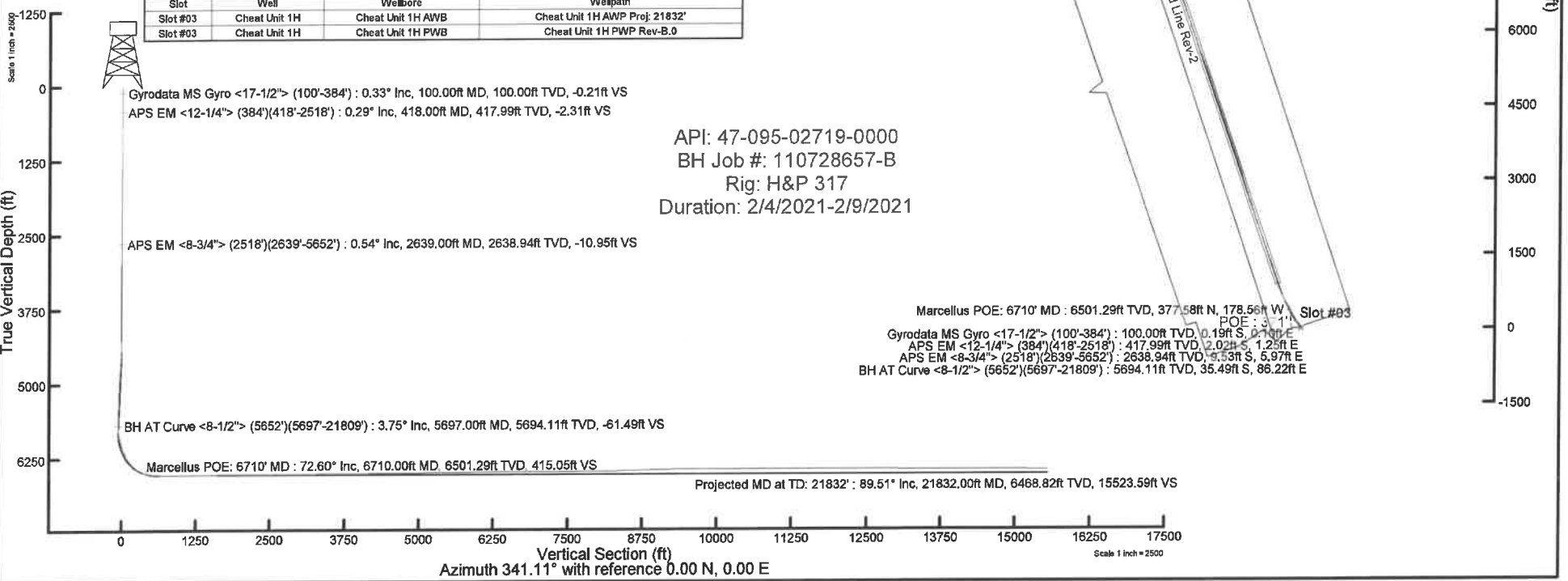
Plot reference wellpath is Cheat Unit 1H PWP Rev-B.0	Grid System: NAD27 / UTM Zone 17 North, US Feet
True vertical depths are referenced to H&P 317 (RKB)	North Reference: Grid north
Reference wellpath measured depths are referenced to H&P 317 (RKB)	Scale: True distance
H&P 317 (RKB) to Mean Sea Level: 1151.5 feet	Coordinates are in feet referenced to Slot
Mean Sea Level to Ground level (At Slot: Slot #03): -1128 feet	Depths are in feet
Offset wellpath MDs are referenced to each well's default MD datum	Created by: webdavis on 2021-02-10; Database: WA, MP, EASTERNUS, Deln

Location Information					
Facility Name	Grid East (US ft)	Grid North (US ft)	Latitude	Longitude	
Elk Fork Pad	1676885.038	14359018.492	39°32'28.3780"N	80°52'14.3200"W	
Slot	Local N (ft)	Local E (ft)	Grid East (US ft)	Grid North (US ft)	Longitude
Slot #03	-0.00	0.00	1676885.040	14359018.490	39°32'28.3780"N 80°52'14.3200"W
Comment Cheat Unit 1H					
H&P 317 (RKB) to Ground level (At Slot: Slot #03)			25.5ft		
Mean Sea Level to Ground level (At Slot: Slot #03)			-1128ft		
H&P 317 (RKB) to Mean Sea Level			1151.5ft		

Well Profile Data							
Design Comment	MD (ft)	Inc (°)	Az (°)	TVD (ft)	Local N (ft)	Local E (ft)	VS (ft)
Tie On	2518.00	0.330	62.550	2517.94	-10.16	5.34	-11.35
Proj. to Bottom	2595.00	0.330	62.550	2594.94	-9.96	5.74	-11.28
Drill Out	2655.00	0.330	62.550	2654.94	-9.80	6.04	-11.23
End of Drop	2688.00	0.000	105.064	2687.94	-9.76	6.13	-11.22
KOP 1	4485.50	0.000	105.064	4485.44	-9.76	6.13	-11.22
End of Build	4685.51	4.000	105.064	4685.28	-11.57	12.87	-15.11
Curve KOP	5790.89	4.000	105.064	5787.97	-31.61	87.33	-58.18
Build / Turn	6272.28	35.000	315.000	6242.49	65.32	2.71	80.93
POE	6713.83	72.014	333.937	6502.00	355.21	-186.75	398.54
Landing Pt.	6938.86	90.000	333.937	6537.00	553.88	-283.91	615.98
On AZI	7297.16	90.000	341.107	6537.00	884.93	-420.89	973.53
BHL	21872.00	90.000	341.107	6537.00	14674.55	-5140.24	15549.37



Well Data			
Slot	Well	Wellbore	Wellpath
Slot #03	Cheat Unit 1H	Cheat Unit 1H AWB	Cheat Unit 1H AWP Proj: 21832'
Slot #03	Cheat Unit 1H	Cheat Unit 1H PWB	Cheat Unit 1H PWP Rev-B.0





Actual Wellpath Report

Cheat Unit 1H AWP Proj: 21832'

Page 1 of 12



REFERENCE WELLPATH IDENTIFICATION			
Operator	ANTERO RESOURCES CORPORATION	Well	Cheat Unit 1H
Field	Tyler	API	47-095-02719-0000
Facility	Elk Fork Pad	Wellbore	Cheat Unit 1H AWB
Slot	Slot #03		

REPORT SETUP INFORMATION			
Projection System	NAD27 / UTM Zone 17 North, US feet	Software System	WellArchitect® 6.0
North Reference	Grid	User	Edsaryar
Scale	0.999602	Report Generated	10/Feb/2021 at 21:48
Convergence at slot	0.08° East	Database	WA_MPL_EASTERNUS_Defn

WELLPATH LOCATION						
	Local coordinates		Grid coordinates		Geographic coordinates	
	North[ft]	East[ft]	Easting[US ft]	Northing[US ft]	Latitude	Longitude
Slot Location	-0.00	0.00	1676885.04	14359018.49	39°32'28.3780"N	80°52'14.3200"W
Facility Reference Pt			1676885.04	14359018.49	39°32'28.3780"N	80°52'14.3200"W
Field Reference Pt			0.00	0.00	0°00'0.0000"	85°29'19.3013"W

WELLPATH DATUM			
Calculation method	Minimum curvature	H&P 317 (RKB) to Facility Vertical Datum	1151.50ft
Horizontal Reference Pt	Slot	H&P 317 (RKB) to Mean Sea Level	1151.50ft
Vertical Reference Pt	H&P 317 (RKB)	H&P 317 (RKB) to Ground Level at Slot (Slot #03)	25.50ft
MD Reference Pt	H&P 317 (RKB)	Section Origin	N 0.00, E 0.00 ft
Field Vertical Reference	Mean Sea Level	Section Azimuth	341.11°



Actual Wellpath Report

Cheat Unit 1H AWP Proj: 21832'
Page 2 of 12



REFERENCE WELLPATH IDENTIFICATION			
Operator	ANTERO RESOURCES CORPORATION	Well	Cheat Unit 1H
Field	Tyler	API	47-095-02719-0000
Facility	Elk Fork Pad	Wellbore	Cheat Unit 1H AWB
Slot	Slot #03		

WELLPATH DATA (252 stations) † = Interpolated, ‡ = extrapolated station																
MD	Inclination	Azimuth	TVD	Vert Sect	North	East	Grid East	Grid North	Latitude	Longitude	Closure Dist	Closure Dir	DLS	Build Rate	Turn Rate	Comments
[ft]	[°]	[°]	[ft]	[ft]	[ft]	[ft]	[US ft]	[US ft]			[ft]	[°]	[°/100ft]	[ft/100ft]	[°/100ft]	
0.00	0.000	151.330	0.00	0.00	0.00	0.00	1676885.04	14359018.49	39°32'28.3780"N	80°52'14.3200"W	0.00	0.000	0.00	0.00	0.00	
25.50	0.000	151.330	25.50	0.00	0.00	0.00	1676885.04	14359018.49	39°32'28.3780"N	80°52'14.3200"W	0.00	0.000	0.00	0.00	0.00	
100.00	0.330	151.330	100.00	-0.21	-0.19	0.10	1676885.14	14359018.30	39°32'28.3761"N	80°52'14.3187"W	0.21	151.330	0.44	0.44	0.00	Gyrodata MS Gyro <17-1/2"> (100'-384')
200.00	0.370	156.120	200.00	-0.82	-0.74	0.37	1676885.41	14359017.75	39°32'28.3707"N	80°52'14.3152"W	0.82	153.203	0.05	0.04	4.79	
300.00	0.440	149.430	300.00	-1.51	-1.36	0.70	1676885.74	14359017.13	39°32'28.3645"N	80°52'14.3111"W	1.53	152.872	0.08	0.07	-6.69	
384.00	0.460	140.060	383.99	-2.15	-1.90	1.08	1676886.12	14359016.59	39°32'28.3592"N	80°52'14.3062"W	2.18	150.401	0.09	0.02	-11.15	
418.00	0.290	98.660	417.99	-2.31	-2.02	1.25	1676886.29	14359016.47	39°32'28.3580"N	80°52'14.3040"W	2.37	148.177	0.91	-0.50	-121.76	APS EM <12-1/4"> (384')(418'-2518')
508.00	0.540	146.330	507.99	-2.83	-2.40	1.71	1676886.75	14359016.09	39°32'28.3542"N	80°52'14.2982"W	2.95	144.545	0.45	0.28	52.97	
689.00	0.290	97.500	688.99	-3.86	-3.17	2.64	1676887.68	14359015.32	39°32'28.3466"N	80°52'14.2864"W	4.13	140.255	0.23	-0.14	-26.98	
778.00	0.610	108.400	777.98	-4.24	-3.35	3.31	1676888.35	14359015.14	39°32'28.3448"N	80°52'14.2778"W	4.71	135.348	0.37	0.36	12.25	
868.00	0.310	176.060	867.98	-4.77	-3.75	3.78	1676888.82	14359014.75	39°32'28.3409"N	80°52'14.2718"W	5.32	134.721	0.63	-0.33	75.18	
959.00	0.140	200.370	958.98	-5.09	-4.10	3.76	1676888.80	14359014.40	39°32'28.3374"N	80°52'14.2721"W	5.56	137.441	0.21	-0.19	26.71	
1049.00	0.420	208.310	1048.98	-5.40	-4.49	3.57	1676888.60	14359014.00	39°32'28.3336"N	80°52'14.2745"W	5.73	141.538	0.31	0.31	8.82	
1143.00	0.470	219.940	1142.98	-5.84	-5.09	3.16	1676888.19	14359013.40	39°32'28.3276"N	80°52'14.2798"W	5.99	148.197	0.11	0.05	12.37	
1236.00	0.270	148.150	1235.97	-6.25	-5.57	3.03	1676888.06	14359012.93	39°32'28.3229"N	80°52'14.2815"W	6.34	151.473	0.50	-0.22	-77.19	
1330.00	0.470	220.510	1329.97	-6.66	-6.05	2.89	1676887.93	14359012.44	39°32'28.3182"N	80°52'14.2832"W	6.70	154.441	0.50	0.21	76.98	
1423.00	0.480	164.480	1422.97	-7.24	-6.71	2.75	1676887.79	14359011.78	39°32'28.3116"N	80°52'14.2850"W	7.25	157.733	0.48	0.01	-60.25	
1517.00	0.640	176.640	1516.96	-8.14	-7.62	2.88	1676887.92	14359010.88	39°32'28.3027"N	80°52'14.2833"W	8.14	159.256	0.21	0.17	12.94	
1611.00	0.640	166.210	1610.96	-9.17	-8.65	3.04	1676888.08	14359009.84	39°32'28.2924"N	80°52'14.2813"W	9.17	160.633	0.12	0.00	-11.10	
1704.00	0.570	155.920	1703.95	-10.15	-9.58	3.35	1676888.39	14359008.92	39°32'28.2833"N	80°52'14.2774"W	10.15	160.703	0.14	-0.08	-11.06	
1798.00	0.440	180.540	1797.95	-10.95	-10.37	3.54	1676888.58	14359008.13	39°32'28.2755"N	80°52'14.2750"W	10.95	161.140	0.27	-0.14	26.19	
1891.00	0.000	352.570	1890.95	-11.29	-10.72	3.54	1676888.58	14359007.77	39°32'28.2720"N	80°52'14.2750"W	11.29	161.742	0.47	-0.47	0.00	
1985.00	0.270	149.950	1984.95	-11.51	-10.91	3.65	1676888.69	14359007.58	39°32'28.2701"N	80°52'14.2736"W	11.51	161.517	0.29	0.29	0.00	
2078.00	0.460	108.320	2077.95	-11.95	-11.22	4.11	1676889.15	14359007.27	39°32'28.2670"N	80°52'14.2677"W	11.95	159.873	0.34	0.20	-44.76	
2172.00	0.170	301.810	2171.95	-12.07	-11.27	4.35	1676889.39	14359007.23	39°32'28.2666"N	80°52'14.2646"W	12.08	158.879	0.67	-0.31	-177.14	
2265.00	0.210	48.780	2264.95	-11.90	-11.08	4.36	1676889.40	14359007.41	39°32'28.2684"N	80°52'14.2645"W	11.91	158.509	0.33	0.04	115.02	
2359.00	0.330	50.360	2358.95	-11.74	-10.79	4.70	1676889.74	14359007.70	39°32'28.2712"N	80°52'14.2602"W	11.77	156.467	0.13	0.13	1.68	
2452.00	0.330	35.740	2451.94	-11.49	-10.41	5.06	1676890.10	14359008.09	39°32'28.2751"N	80°52'14.2555"W	11.57	154.053	0.09	0.00	-15.72	
2518.00	0.330	62.550	2517.94	-11.35	-10.16	5.34	1676890.38	14359008.33	39°32'28.2774"N	80°52'14.2520"W	11.48	152.270	0.23	0.00	40.62	
2639.00	0.540	33.530	2638.94	-10.95	-9.53	5.97	1676891.01	14359008.97	39°32'28.2837"N	80°52'14.2440"W	11.24	147.942	0.25	0.17	-23.98	APS EM <8-3/4"> (2518')(2639'-5652')



Actual Wellpath Report

Cheat Unit 1H AWP Proj: 21832'
Page 3 of 12



REFERENCE WELLPATH IDENTIFICATION

Operator	ANTERO RESOURCES CORPORATION	Well	Cheat Unit 1H
Field	Tyler	API	47-095-02719-0000
Facility	Elk Fork Pad	Wellbore	Cheat Unit 1H AWP
Slot	Slot #03		

WELLPATH DATA (252 stations)

MD (ft)	Inclination (°)	Azimuth (°)	TVD (ft)	Vert Sect (ft)	North (ft)	East (ft)	Grid East (US ft)	Grid North (US ft)	Latitude	Longitude	Closure Dist (ft)	Closure Dir (°)	DLS (°/100ft)	Build Rate (°/100ft)	Turn Rate (°/100ft)	Comments
2727.00	0.780	31.200	2726.93	-10.31	-8.67	6.51	1676891.54	14359009.82	39°32'28.2922"N	80°52'14.2371"W	10.84	143.114	0.27	0.27	-2.65	
2816.00	0.940	23.730	2815.92	-9.38	-7.48	7.11	1676892.15	14359011.01	39°32'28.3039"N	80°52'14.2293"W	10.33	136.451	0.22	0.18	-8.39	
2904.00	0.810	12.330	2903.91	-8.32	-6.22	7.54	1676892.57	14359012.28	39°32'28.3164"N	80°52'14.2239"W	9.77	129.509	0.25	-0.15	-12.95	
2993.00	1.190	355.680	2992.90	-6.89	-4.68	7.60	1676892.64	14359013.81	39°32'28.3316"N	80°52'14.2230"W	8.93	121.614	0.53	0.43	-18.71	
3080.00	1.130	347.880	3079.88	-5.16	-2.94	7.35	1676892.39	14359015.55	39°32'28.3488"N	80°52'14.2262"W	7.92	111.790	0.19	-0.07	-8.97	
3170.00	1.340	332.080	3169.86	-3.24	-1.14	6.68	1676891.71	14359017.35	39°32'28.3666"N	80°52'14.2348"W	6.77	99.713	0.44	0.23	-17.56	
3258.00	1.110	327.980	3257.84	-1.40	0.49	5.74	1676890.78	14359018.98	39°32'28.3827"N	80°52'14.2467"W	5.76	85.129	0.28	-0.26	-4.66	
3347.00	1.290	332.320	3346.82	0.43	2.11	4.82	1676889.86	14359020.60	39°32'28.3987"N	80°52'14.2584"W	5.26	66.381	0.23	0.20	4.88	
3435.00	0.070	234.600	3434.81	1.40	2.95	4.32	1676889.35	14359021.44	39°32'28.4071"N	80°52'14.2648"W	5.23	55.611	1.48	-1.39	-111.05	
3528.00	0.530	148.200	3527.81	0.96	2.55	4.50	1676889.53	14359021.04	39°32'28.4032"N	80°52'14.2625"W	5.17	60.389	0.57	0.49	-92.90	
3617.00	0.420	155.820	3616.81	0.24	1.91	4.85	1676889.88	14359020.40	39°32'28.3968"N	80°52'14.2581"W	5.21	68.514	0.14	-0.12	8.56	
3705.00	0.470	155.400	3704.81	-0.44	1.29	5.13	1676890.17	14359019.77	39°32'28.3906"N	80°52'14.2545"W	5.29	75.932	0.06	0.06	-0.48	
3794.00	0.300	147.490	3793.80	-1.03	0.76	5.41	1676890.44	14359019.25	39°32'28.3854"N	80°52'14.2510"W	5.46	82.030	0.20	-0.19	-8.89	
3882.00	0.240	142.030	3881.80	-1.43	0.42	5.64	1676890.68	14359018.91	39°32'28.3820"N	80°52'14.2479"W	5.66	85.772	0.07	-0.07	-6.20	
3971.00	0.260	143.820	3970.80	-1.80	0.11	5.88	1676890.91	14359018.60	39°32'28.3790"N	80°52'14.2450"W	5.88	88.954	0.02	0.02	2.01	
4059.00	1.900	104.890	4058.78	-2.80	-0.43	7.40	1676892.44	14359018.06	39°32'28.3736"N	80°52'14.2255"W	7.42	93.314	1.94	1.86	-44.24	
4148.00	2.280	96.290	4147.73	-4.38	-1.00	10.59	1676895.63	14359017.49	39°32'28.3679"N	80°52'14.1848"W	10.64	95.405	0.55	0.43	-9.66	
4236.00	2.810	96.060	4235.64	-6.03	-1.42	14.48	1676899.51	14359017.07	39°32'28.3637"N	80°52'14.1352"W	14.54	95.608	0.60	0.60	-0.26	
4325.00	4.480	106.240	4324.46	-8.95	-2.62	19.98	1676905.01	14359015.87	39°32'28.3518"N	80°52'14.0650"W	20.15	97.481	2.01	1.88	11.44	
4413.00	4.760	109.870	4412.17	-13.22	-4.83	26.72	1676911.75	14359013.67	39°32'28.3299"N	80°52'13.9791"W	27.15	100.240	0.46	0.32	4.12	
4502.00	4.420	107.970	4500.89	-17.58	-7.14	33.45	1676918.48	14359011.35	39°32'28.3069"N	80°52'13.8931"W	34.20	102.048	0.42	-0.38	-2.13	
4590.00	4.030	106.290	4588.65	-21.40	-9.05	39.64	1676924.67	14359009.44	39°32'28.2879"N	80°52'13.8141"W	40.66	102.863	0.46	-0.44	-1.91	
4679.00	4.390	123.060	4677.41	-25.88	-11.79	45.50	1676930.52	14359006.71	39°32'28.2608"N	80°52'13.7394"W	47.00	104.525	1.44	0.40	18.84	
4767.00	3.610	131.530	4765.19	-30.95	-15.46	50.40	1676935.42	14359003.03	39°32'28.2244"N	80°52'13.6770"W	52.72	107.056	1.11	-0.89	9.62	
4856.00	3.520	134.450	4854.02	-35.82	-19.23	54.45	1676939.46	14358999.26	39°32'28.1871"N	80°52'13.6254"W	57.74	109.456	0.23	-0.10	3.28	
4944.00	3.320	134.770	4941.87	-40.52	-22.92	58.18	1676943.20	14358995.58	39°32'28.1506"N	80°52'13.5777"W	62.54	111.501	0.23	-0.23	0.36	
5033.00	2.760	123.110	5030.74	-44.52	-25.91	61.81	1676946.82	14358992.59	39°32'28.1211"N	80°52'13.5315"W	67.02	112.740	0.93	-0.63	-13.10	
5121.00	2.740	126.190	5118.64	-47.91	-28.30	65.28	1676950.29	14358990.20	39°32'28.0973"N	80°52'13.4872"W	71.15	113.441	0.17	-0.02	3.50	
5210.00	2.400	126.720	5207.55	-51.20	-30.68	68.49	1676953.50	14358987.83	39°32'28.0738"N	80°52'13.4463"W	75.05	114.126	0.38	-0.38	0.60	
5298.00	1.710	127.250	5295.49	-53.81	-32.57	71.01	1676956.02	14358985.93	39°32'28.0551"N	80°52'13.4141"W	78.13	114.639	0.78	-0.78	0.60	



Actual Wellpath Report

Cheat Unit 1H AWP Proj: 21832'

Page 4 of 12



REFERENCE WELLPATH IDENTIFICATION				
Operator	ANTERO RESOURCES CORPORATION		Well	Cheat Unit 1H
Field	Tyler		API	47-095-02719-0000
Facility	Elk Fork Pad		Wellbore	Cheat Unit 1H AWB
Slot	Slot #03			

WELLPATH DATA (252 stations) † = interpolated, ‡ = extrapolated station																
MD	Inclination	Azimuth	TVD	Vert Sect	North	East	Grid East	Grid North	Latitude	Longitude	Closure Dist	Closure Dir	DLS	Build Rate	Turn Rate	Comments
[ft]	[°]	[°]	[ft]	[ft]	[ft]	[ft]	[US ft]	[US ft]			[ft]	[°]	[ft/100ft]	[ft/100ft]	[ft/100ft]	
5387.00	1.480	127.310	5384.46	-55.87	-34.07	72.98	1676957.99	14358984.43	39°32'28.0402"N	80°52'13.3890"W	80.55	115.025	0.26	-0.26	0.07	
5475.00	1.320	116.260	5472.43	-57.53	-35.21	74.80	1676959.81	14358983.29	39°32'28.0289"N	80°52'13.3659"W	82.67	115.208	0.36	-0.18	-12.56	
5564.00	2.950	91.240	5561.37	-59.04	-35.71	78.01	1676963.02	14358982.79	39°32'28.0239"N	80°52'13.3249"W	85.79	114.599	2.07	1.83	-28.11	
5652.00	3.870	87.990	5649.21	-60.69	-35.66	83.24	1676968.24	14358982.85	39°32'28.0244"N	80°52'13.2582"W	90.55	113.189	1.07	1.05	-3.69	
5697.00	3.750	85.470	5694.11	-61.49	-35.49	86.22	1676971.23	14358983.02	39°32'28.0260"N	80°52'13.2201"W	93.24	112.371	0.46	-0.27	-5.60	BH AT Curve <8-1/2"> (5652')(5697'-21809')
5787.00	4.870	1.670	5783.93	-58.64	-31.43	89.27	1676974.27	14358987.07	39°32'28.0660"N	80°52'13.1811"W	94.64	109.398	6.46	1.24	-93.11	
5876.00	12.370	345.520	5871.87	-45.58	-18.41	86.99	1676972.00	14359000.09	39°32'28.1948"N	80°52'13.2099"W	88.92	101.947	8.77	8.43	-18.15	
5964.00	14.550	335.500	5957.46	-25.18	0.78	80.05	1676965.06	14359019.27	39°32'28.3846"N	80°52'13.2982"W	80.05	89.439	3.62	2.48	-11.39	
6052.00	19.230	324.250	6041.67	-0.29	22.62	66.99	1676952.00	14359041.10	39°32'28.6006"N	80°52'13.4645"W	70.71	71.341	6.46	5.32	-12.78	
6141.00	24.300	314.910	6124.32	30.20	47.47	45.44	1676930.46	14359065.94	39°32'28.8465"N	80°52'13.7391"W	65.71	43.747	6.88	5.70	-10.49	
6229.00	29.900	313.000	6202.63	65.82	75.23	16.55	1676901.58	14359093.69	39°32'29.1213"N	80°52'14.1074"W	77.03	12.405	6.44	6.36	-2.17	
6279.00†	33.290	316.418	6245.21	89.29	93.68	-2.03	1676883.01	14359112.13	39°32'29.3039"N	80°52'14.3442"W	93.70	358.757	7.67	6.78	6.84	Sycamore: 6279' MD
6318.00	35.990	318.680	6277.30	109.61	110.04	-16.98	1676868.07	14359128.49	39°32'29.4658"N	80°52'14.5347"W	111.34	351.229	7.67	6.92	5.80	
6406.00	43.630	325.940	6344.89	162.92	154.70	-51.13	1676833.94	14359173.13	39°32'29.9077"N	80°52'14.9697"W	162.93	341.713	10.16	8.68	8.25	
6415.00†	44.537	326.320	6351.35	168.97	159.90	-54.61	1676830.45	14359178.33	39°32'29.9591"N	80°52'15.0142"W	168.97	341.142	10.50	10.08	4.22	Middlesex: 6415' MD
6495.00	52.650	329.240	6404.22	227.32	210.66	-86.49	1676798.58	14359229.07	39°32'30.4612"N	80°52'15.4201"W	227.73	337.678	10.50	10.14	3.65	
6541.00	57.300	330.270	6430.62	264.24	243.20	-105.45	1676779.63	14359261.59	39°32'30.7831"N	80°52'15.6616"W	265.08	336.558	10.27	10.11	2.24	
6558.00†	59.133	330.407	6439.57	278.44	255.76	-112.60	1676772.48	14359274.14	39°32'30.9073"N	80°52'15.7526"W	279.45	336.237	10.81	10.79	0.81	Burkett: 6558' MD
6583.00	61.830	330.600	6451.89	299.82	274.69	-123.31	1676761.78	14359293.07	39°32'31.0946"N	80°52'15.8890"W	301.10	335.824	10.81	10.79	0.77	
6595.00†	62.727	330.976	6457.47	310.27	283.96	-128.50	1676756.59	14359302.34	39°32'31.1863"N	80°52'15.9550"W	311.68	335.652	7.98	7.48	3.13	Tully: 6595' MD
6628.00	65.200	331.980	6471.95	339.50	310.01	-142.65	1676742.45	14359328.38	39°32'31.4440"N	80°52'16.1352"W	341.26	335.291	7.98	7.49	3.04	
6672.00	69.410	332.350	6488.93	379.59	345.90	-161.60	1676723.50	14359364.25	39°32'31.7989"N	80°52'16.3764"W	381.79	334.959	9.60	9.57	0.84	
6710.00†	72.602	331.334	6501.29	415.05	377.58	-178.56	1676706.58	14359395.91	39°32'32.1122"N	80°52'16.5922"W	417.67	334.690	8.77	8.40	-2.67	Marcellus POE: 6710' MD
6760.00	76.810	330.050	6514.48	462.47	419.62	-202.16	1676682.96	14359437.94	39°32'32.5280"N	80°52'16.8928"W	465.78	334.276	8.77	8.42	-2.57	
6849.00	85.690	329.990	6528.00	548.70	495.74	-246.08	1676639.06	14359514.03	39°32'33.2810"N	80°52'17.4519"W	553.45	333.601	9.98	9.98	-0.07	
6937.00	88.400	330.400	6532.54	634.99	571.99	-289.75	1676595.40	14359590.25	39°32'34.0352"N	80°52'18.0081"W	641.19	333.134	3.11	3.08	0.47	
7025.00	89.600	330.870	6534.08	721.51	648.67	-332.90	1676552.28	14359666.90	39°32'34.7936"N	80°52'18.5574"W	729.10	332.833	1.46	1.36	0.53	
7114.00	89.660	334.570	6534.65	809.54	727.75	-373.68	1676511.51	14359745.95	39°32'35.5759"N	80°52'19.0765"W	818.09	332.821	4.16	0.07	4.16	
7202.00	89.660	337.940	6535.17	897.21	808.29	-409.11	1676476.09	14359826.46	39°32'36.3723"N	80°52'19.5273"W	906.93	333.154	3.83	0.00	3.83	
7291.00	89.630	342.190	6535.73	986.17	891.94	-439.45	1676445.77	14359910.07	39°32'37.1994"N	80°52'19.9131"W	994.32	333.771	4.78	-0.03	4.78	



Actual Wellpath Report

Cheat Unit 1H AWP Proj: 21832'
Page 5 of 12



REFERENCE WELLPATH IDENTIFICATION			
Operator	ANTERO RESOURCES CORPORATION	Well	Cheat Unit 1H
Field	Tyler	API	47-095-02719-0000
Facility	Elk Fork Pad	Wellbore	Cheat Unit 1H AWB
Slot	Slot #03		

WELLPATH DATA (252 stations)																
MD (ft)	Inclination (°)	Azimuth (°)	TVD (ft)	Vert Sect (ft)	North (ft)	East (ft)	Grid East (US ft)	Grid North (US ft)	Latitude	Longitude	Closure Dist (ft)	Closure Dir (°)	DLS (°/100ft)	Build Rate (°/100ft)	Turn Rate (°/100ft)	Comments
7379.00	90.580	342.150	6535.56	1074.16	975.71	-466.39	1676418.83	14359993.81	39°32'38.0278"N	80°52'20.2555"W	1081.45	334.452	1.08	1.08	-0.05	
7468.00	89.780	342.230	6535.28	1163.14	1060.44	-493.61	1676391.62	14360078.51	39°32'38.8656"N	80°52'20.6014"W	1169.70	335.039	0.90	-0.90	0.09	
7556.00	90.180	341.120	6535.32	1251.13	1143.98	-521.28	1676363.97	14360162.01	39°32'39.6916"N	80°52'20.9531"W	1257.15	335.502	1.34	0.45	-1.26	
7645.00	90.180	341.610	6535.04	1340.13	1228.31	-549.72	1676335.54	14360246.31	39°32'40.5255"N	80°52'21.3146"W	1345.71	335.889	0.55	0.00	0.55	
7734.00	90.820	342.330	6534.41	1429.12	1312.94	-577.27	1676308.00	14360330.90	39°32'41.3623"N	80°52'21.6647"W	1434.24	336.266	0.95	0.49	0.81	
7822.00	89.880	341.360	6534.03	1517.11	1396.56	-604.69	1676280.60	14360414.49	39°32'42.1890"N	80°52'22.0132"W	1521.85	336.588	1.39	-0.84	-1.10	
7910.00	90.920	343.480	6533.42	1605.08	1480.44	-631.26	1676254.03	14360498.33	39°32'43.0184"N	80°52'22.3509"W	1609.41	336.906	2.68	1.18	2.41	
7999.00	90.740	342.780	6532.13	1694.01	1565.60	-657.09	1676228.22	14360583.46	39°32'43.8605"N	80°52'22.6790"W	1697.90	337.232	0.81	-0.20	-0.79	
8087.00	90.180	341.550	6531.42	1781.99	1649.36	-684.04	1676201.28	14360667.19	39°32'44.6887"N	80°52'23.0215"W	1785.58	337.475	1.54	-0.64	-1.40	
8176.00	90.090	341.580	6531.21	1870.99	1733.79	-712.20	1676173.13	14360751.59	39°32'45.5235"N	80°52'23.3795"W	1874.37	337.668	0.10	-0.10	0.01	
8264.00	90.220	340.810	6530.97	1958.99	1817.09	-740.58	1676144.76	14360834.85	39°32'46.3472"N	80°52'23.7403"W	1962.21	337.826	0.86	0.15	-0.85	
8353.00	90.120	341.650	6530.71	2047.99	1901.35	-769.22	1676116.13	14360919.08	39°32'47.1804"N	80°52'24.1043"W	2051.06	337.974	0.95	-0.11	0.94	
8441.00	89.750	341.540	6530.81	2135.98	1984.85	-797.00	1676088.36	14361002.55	39°32'48.0060"N	80°52'24.4575"W	2138.89	338.123	0.44	-0.42	-0.12	
8530.00	90.310	342.080	6530.76	2224.98	2069.40	-824.78	1676060.59	14361087.07	39°32'48.8421"N	80°52'24.8106"W	2227.71	338.270	0.87	0.63	0.61	
8618.00	89.600	340.440	6530.83	2312.97	2152.74	-853.05	1676032.33	14361170.36	39°32'49.6660"N	80°52'25.1700"W	2315.59	338.383	2.03	-0.81	-1.86	
8707.00	90.180	342.870	6531.00	2401.96	2237.21	-881.06	1676004.33	14361254.80	39°32'50.5013"N	80°52'25.5261"W	2404.45	338.504	2.81	0.65	2.73	
8795.00	90.430	341.450	6530.53	2489.94	2320.97	-908.02	1675977.38	14361338.53	39°32'51.3295"N	80°52'25.8687"W	2492.27	338.633	1.64	0.28	-1.61	
8884.00	89.970	342.130	6530.22	2578.93	2405.51	-935.83	1675949.58	14361423.04	39°32'52.1654"N	80°52'26.2222"W	2581.14	338.742	0.92	-0.52	0.76	
8972.00	90.890	343.270	6529.56	2666.90	2489.53	-962.00	1675923.42	14361507.02	39°32'52.9961"N	80°52'26.5548"W	2668.93	338.873	1.66	1.05	1.30	
9061.00	90.120	340.870	6528.78	2755.87	2574.19	-989.40	1675896.04	14361591.65	39°32'53.8333"N	80°52'26.9030"W	2757.79	338.976	2.83	-0.87	-2.70	
9149.00	90.830	342.640	6528.05	2843.86	2657.76	-1016.95	1675868.50	14361675.19	39°32'54.6596"N	80°52'27.2532"W	2845.68	339.062	2.17	0.81	2.01	
9238.00	90.370	342.460	6527.12	2932.83	2742.66	-1043.63	1675841.82	14361760.05	39°32'55.4991"N	80°52'27.5923"W	2934.51	339.167	0.56	-0.52	-0.20	
9326.00	89.970	341.430	6526.85	3020.82	2826.33	-1070.91	1675814.56	14361843.69	39°32'56.3263"N	80°52'27.9390"W	3022.41	339.248	1.26	-0.45	-1.17	
9415.00	90.220	341.460	6526.71	3109.81	2910.70	-1099.23	1675786.25	14361928.03	39°32'57.1606"N	80°52'28.2990"W	3111.35	339.311	0.28	0.28	0.03	
9503.00	90.770	344.660	6525.95	3197.75	2994.87	-1124.86	1675760.63	14362012.16	39°32'57.9928"N	80°52'28.6248"W	3199.15	339.414	3.69	0.63	3.64	
9592.00	91.450	343.500	6524.22	3286.61	3080.44	-1149.27	1675736.23	14362097.69	39°32'58.8388"N	80°52'28.9348"W	3287.84	339.540	1.51	0.76	-1.30	
9680.00	89.690	341.930	6523.35	3374.56	3164.45	-1175.42	1675710.10	14362181.68	39°32'59.6696"N	80°52'29.2671"W	3375.70	339.623	2.68	-2.00	-1.78	
9769.00	90.920	343.110	6522.87	3463.53	3249.34	-1202.15	1675683.37	14362266.53	39°33'0.5089"N	80°52'29.6069"W	3464.59	339.697	1.92	1.38	1.33	
9857.00	90.250	342.150	6521.98	3551.50	3333.32	-1228.42	1675657.12	14362350.47	39°33'1.3392"N	80°52'29.9407"W	3552.47	339.770	1.33	-0.76	-1.09	
10034.00	90.370	341.140	6521.02	3728.48	3501.31	-1284.15	1675601.40	14362518.40	39°33'3.0003"N	80°52'30.6493"W	3729.37	339.859	0.57	0.07	-0.57	



Actual Wellpath Report

Cheat Unit 1H AWP Proj: 21832'
Page 6 of 12



REFERENCE WELLPATH IDENTIFICATION			
Operator	ANTERO RESOURCES CORPORATION	Well	Cheat Unit 1H
Field	Tyler	API	47-095-02719-0000
Facility	Elk Fork Pad	Wellbore	Cheat Unit 1H AWB
Slot	Slot #03		

WELLPATH DATA (252 stations)																
MD	Inclination	Azimuth	TVD	Vert Sect	North	East	Grid East	Grid North	Latitude	Longitude	Closure Dist	Closure Dir	DLS	Build Rate	Turn Rate	Comments
[ft]	[°]	[°]	[ft]	[ft]	[ft]	[ft]	[US ft]	[US ft]			[ft]	[°]	["/100ft]	["/100ft]	["/100ft]	
10122.00	91.290	342.560	6519.74	3816.46	3584.92	-1311.56	1675574.00	14362601.97	39°33'3.8270"N	80°52'30.9977"W	3817.31	339.905	1.92	1.05	1.61	
10211.00	90.120	340.660	6518.65	3905.45	3669.38	-1339.64	1675545.94	14362686.38	39°33'4.6620"N	80°52'31.3546"W	3906.26	339.944	2.51	-1.31	-2.13	
10299.00	90.830	342.090	6517.92	3993.44	3752.75	-1367.74	1675517.85	14362769.74	39°33'5.4865"N	80°52'31.7119"W	3994.22	339.975	1.81	0.81	1.62	
10388.00	90.280	339.930	6517.06	4082.43	3836.90	-1396.70	1675488.90	14362853.85	39°33'6.3185"N	80°52'32.0801"W	4083.20	339.998	2.50	-0.62	-2.43	
10476.00	90.890	341.590	6516.16	4170.42	3919.97	-1425.69	1675459.92	14362936.89	39°33'7.1400"N	80°52'32.4488"W	4171.18	340.014	2.01	0.69	1.89	
10564.00	90.520	341.800	6515.07	4258.41	4003.51	-1453.33	1675432.29	14363020.40	39°33'8.9660"N	80°52'32.8001"W	4259.14	340.048	0.48	-0.42	0.24	
10653.00	90.250	340.440	6514.48	4347.41	4087.72	-1482.13	1675403.51	14363104.57	39°33'8.7987"N	80°52'33.1663"W	4348.12	340.070	1.56	-0.30	-1.53	
10741.00	90.310	340.800	6514.05	4435.40	4170.73	-1511.33	1675374.32	14363187.55	39°33'9.6195"N	80°52'33.5376"W	4436.12	340.081	0.41	0.07	0.41	
10830.00	91.110	341.940	6512.94	4524.39	4255.06	-1539.76	1675345.90	14363271.85	39°33'10.4533"N	80°52'33.8991"W	4525.09	340.107	1.58	0.90	1.28	
10918.00	90.000	341.240	6512.09	4612.38	4338.55	-1567.55	1675318.12	14363355.30	39°33'11.2789"N	80°52'34.2524"W	4613.05	340.135	1.49	-1.26	-0.80	
11007.00	90.430	340.390	6511.76	4701.38	4422.61	-1596.79	1675288.89	14363439.33	39°33'12.1100"N	80°52'34.6243"W	4702.04	340.148	1.07	0.48	-0.96	
11095.00	90.920	341.690	6510.72	4789.37	4505.83	-1625.38	1675260.31	14363522.51	39°33'12.9328"N	80°52'34.9878"W	4790.02	340.164	1.58	0.56	1.48	
11184.00	90.550	342.970	6509.58	4878.34	4590.62	-1652.39	1675233.31	14363607.27	39°33'13.7712"N	80°52'35.3312"W	4878.95	340.204	1.50	-0.42	1.44	
11272.00	90.120	340.080	6509.06	4966.33	4674.07	-1680.28	1675205.44	14363690.69	39°33'14.5964"N	80°52'35.6857"W	4966.92	340.227	3.32	-0.49	-3.28	
11360.00	90.830	343.870	6508.33	5054.30	4757.73	-1707.50	1675178.22	14363774.32	39°33'15.4236"N	80°52'36.0318"W	5054.86	340.257	4.38	0.81	4.31	
11449.00	90.430	339.730	6507.36	5143.27	4842.26	-1735.29	1675150.44	14363858.81	39°33'16.2594"N	80°52'36.3851"W	5143.80	340.284	4.67	-0.45	-4.65	
11537.00	90.250	339.720	6506.83	5231.24	4924.80	-1765.78	1675119.96	14363941.32	39°33'17.0766"N	80°52'36.7729"W	5231.80	340.275	0.20	-0.20	-0.01	
11625.00	90.650	339.470	6506.14	5319.21	5007.28	-1796.47	1675089.29	14364023.76	39°33'17.8912"N	80°52'37.1632"W	5319.79	340.263	0.54	0.45	-0.28	
11714.00	90.920	338.920	6504.92	5408.15	5090.47	-1828.07	1675057.70	14364106.92	39°33'18.7138"N	80°52'37.5653"W	5408.76	340.246	0.69	0.30	-0.62	
11891.00	90.580	337.910	6502.61	5584.93	5255.04	-1893.18	1674992.62	14364271.42	39°33'20.3411"N	80°52'38.3936"W	5585.66	340.188	0.60	-0.19	-0.57	
11979.00	90.580	339.410	6501.71	5672.85	5337.00	-1925.20	1674960.61	14364353.35	39°33'21.1516"N	80°52'38.8010"W	5673.62	340.164	1.70	0.00	1.70	
12068.00	90.280	337.450	6501.05	5761.74	5419.76	-1957.92	1674927.90	14364436.08	39°33'21.9700"N	80°52'39.2173"W	5762.57	340.137	2.23	-0.34	-2.20	
12156.00	90.920	339.030	6500.13	5849.62	5501.48	-1990.54	1674895.30	14364517.77	39°33'22.7781"N	80°52'39.6323"W	5850.52	340.109	1.94	0.73	1.80	
12245.00	90.950	338.780	6498.67	5938.55	5584.51	-2022.57	1674863.28	14364600.76	39°33'23.5991"N	80°52'40.0398"W	5939.49	340.091	0.28	0.03	-0.28	
12333.00	89.690	338.860	6498.18	6026.47	5666.56	-2054.38	1674831.50	14364682.78	39°33'24.4105"N	80°52'40.4443"W	6027.46	340.072	1.43	-1.43	0.09	
12421.00	90.120	340.500	6498.33	6114.44	5749.08	-2084.92	1674800.95	14364765.27	39°33'25.2264"N	80°52'40.8330"W	6115.46	340.067	1.93	0.49	1.86	
12510.00	90.370	341.370	6497.95	6203.44	5833.20	-2113.99	1674771.90	14364849.35	39°33'26.0582"N	80°52'41.2027"W	6204.44	340.079	1.02	0.28	0.98	
12598.00	90.550	341.450	6497.24	6291.44	5916.60	-2142.04	1674743.85	14364932.72	39°33'26.8829"N	80°52'41.5594"W	6292.42	340.098	0.22	0.20	0.09	
12687.00	89.630	341.690	6497.10	6380.43	6001.04	-2170.18	1674715.73	14365017.12	39°33'27.7177"N	80°52'41.9172"W	6381.39	340.118	1.07	-1.03	0.27	
12775.00	89.880	342.300	6497.48	6468.42	6084.72	-2197.38	1674688.54	14365100.78	39°33'28.5452"N	80°52'42.2630"W	6469.34	340.144	0.75	0.28	0.69	



Actual Wellpath Report

Cheat Unit 1H AWP Proj: 21832'
Page 7 of 12



REFERENCE WELLPATH IDENTIFICATION			
Operator	ANTERO RESOURCES CORPORATION	Well	Cheat Unit 1H
Field	Tyler	API	47-095-02719-0000
Facility	Elk Fork Pad	Wellbore	Cheat Unit 1H AWP
Slot	Slot #03		

WELLPATH DATA (252 stations)																
MD (ft)	Inclination (°)	Azimuth (°)	TVD (ft)	Vert Sect (ft)	North (ft)	East (ft)	Grid East (US ft)	Grid North (US ft)	Latitude	Longitude	Closure Dist (ft)	Closure Dir (°)	DLS (ft/100ft)	Build Rate (ft/100ft)	Turn Rate (ft/100ft)	Comments
12864.00	90.120	340.960	6497.48	6557.41	6169.19	-2225.43	1674660.50	14365185.21	39°33'29.3804"N	80°52'42.6196"W	6558.31	340.164	1.53	0.27	-1.51	
12952.00	89.690	341.010	6497.62	6645.41	6252.39	-2254.10	1674631.84	14365268.37	39°33'30.2030"N	80°52'42.9843"W	6646.30	340.175	0.49	-0.49	0.06	
13040.00	89.600	340.940	6498.17	6733.41	6335.58	-2282.79	1674603.17	14365351.53	39°33'31.0256"N	80°52'43.3491"W	6734.29	340.185	0.13	-0.10	-0.08	
13129.00	91.110	342.740	6497.62	6822.40	6420.14	-2310.52	1674575.44	14365436.06	39°33'31.8617"N	80°52'43.7018"W	6823.24	340.207	2.64	1.70	2.02	
13217.00	89.750	341.530	6496.96	6910.38	6503.89	-2337.52	1674548.46	14365519.77	39°33'32.6898"N	80°52'44.0450"W	6911.19	340.231	2.07	-1.55	-1.38	
13306.00	90.830	342.490	6496.51	6999.36	6588.53	-2365.00	1674520.98	14365604.38	39°33'33.5267"N	80°52'44.3945"W	7000.14	340.254	1.62	1.21	1.08	
13394.00	90.430	342.030	6495.54	7087.34	6672.34	-2391.82	1674494.18	14365688.16	39°33'34.3554"N	80°52'44.7353"W	7088.08	340.279	0.69	-0.45	-0.52	
13483.00	90.490	342.270	6494.82	7176.32	6757.06	-2419.10	1674466.91	14365772.84	39°33'35.1930"N	80°52'45.0822"W	7177.03	340.302	0.28	0.07	0.27	
13571.00	90.120	340.010	6494.35	7264.31	6840.32	-2447.54	1674438.48	14365856.07	39°33'36.0163"N	80°52'45.4439"W	7265.02	340.312	2.60	-0.42	-2.57	
13660.00	90.340	341.040	6494.00	7353.31	6924.23	-2477.21	1674408.82	14365939.95	39°33'36.8460"N	80°52'45.8213"W	7354.02	340.315	1.18	0.25	1.16	
13836.00	90.680	341.420	6492.43	7529.30	7090.86	-2533.84	1674352.21	14366106.51	39°33'38.4936"N	80°52'46.5415"W	7529.99	340.336	0.29	0.19	0.22	
13925.00	90.370	340.830	6491.62	7618.29	7175.07	-2562.63	1674323.44	14366190.69	39°33'39.3263"N	80°52'46.9077"W	7618.97	340.345	0.75	-0.35	-0.66	
14013.00	91.230	344.550	6490.39	7706.24	7259.06	-2588.81	1674297.27	14366274.65	39°33'40.1567"N	80°52'47.2404"W	7706.88	340.372	4.34	0.98	4.23	
14102.00	90.250	341.230	6489.24	7795.17	7344.10	-2614.99	1674271.10	14366359.65	39°33'40.9975"N	80°52'47.5732"W	7795.77	340.401	3.89	-1.10	-3.73	
14190.00	91.170	344.260	6488.15	7883.12	7428.13	-2641.08	1674245.01	14366443.64	39°33'41.8283"N	80°52'47.9050"W	7883.68	340.427	3.60	1.05	3.44	
14278.00	91.020	342.320	6486.46	7971.04	7512.39	-2666.38	1674219.73	14366527.87	39°33'42.6614"N	80°52'48.2266"W	7971.55	340.459	2.21	-0.17	-2.20	
14367.00	90.650	340.450	6485.17	8060.02	7596.72	-2694.79	1674191.33	14366612.17	39°33'43.4953"N	80°52'48.5878"W	8060.53	340.469	2.14	-0.42	-2.10	
14455.00	90.250	340.250	6484.48	8148.01	7679.60	-2724.38	1674161.75	14366695.01	39°33'44.3147"N	80°52'48.9642"W	8148.52	340.468	0.51	-0.45	-0.23	
14544.00	89.420	339.760	6484.73	8236.99	7763.23	-2754.81	1674131.33	14366778.61	39°33'45.1417"N	80°52'49.3514"W	8237.52	340.463	1.08	-0.93	-0.55	
14632.00	91.420	340.810	6484.09	8324.97	7846.06	-2784.49	1674101.66	14366861.41	39°33'45.9607"N	80°52'49.7290"W	8325.51	340.461	2.57	2.27	1.19	
14721.00	90.950	340.970	6482.25	8413.95	7930.14	-2813.62	1674072.54	14366945.45	39°33'46.7921"N	80°52'50.0995"W	8414.49	340.465	0.56	-0.53	0.18	
14809.00	93.020	341.470	6479.20	8501.90	8013.40	-2841.93	1674044.24	14367028.68	39°33'47.6153"N	80°52'50.4596"W	8502.42	340.473	2.42	2.35	0.57	
14898.00	90.370	336.930	6476.56	8590.78	8096.53	-2873.52	1674012.67	14367111.78	39°33'48.4374"N	80°52'50.8614"W	8591.33	340.460	5.90	-2.98	-5.10	
14986.00	91.910	338.570	6474.81	8678.60	8177.96	-2906.83	1673979.37	14367193.17	39°33'49.2426"N	80°52'51.2854"W	8679.21	340.432	2.56	1.75	1.86	
15075.00	91.910	338.100	6471.85	8767.45	8260.63	-2939.67	1673946.55	14367275.81	39°33'50.0600"N	80°52'51.7033"W	8768.10	340.411	0.53	0.00	-0.53	
15163.00	93.020	341.080	6468.06	8855.32	8343.01	-2970.32	1673915.90	14367358.16	39°33'50.8747"N	80°52'52.0934"W	8856.00	340.403	3.61	1.26	3.39	
15251.00	92.920	340.530	6463.50	8943.21	8426.01	-2999.22	1673887.02	14367441.13	39°33'51.6953"N	80°52'52.4609"W	8943.88	340.407	0.63	-0.11	-0.63	
15340.00	90.890	340.230	6460.54	9032.14	8509.79	-3029.09	1673857.17	14367524.87	39°33'52.5237"N	80°52'52.8408"W	9032.82	340.407	2.31	-2.28	-0.34	
15428.00	90.800	340.230	6459.25	9120.12	8592.60	-3058.85	1673827.42	14367607.64	39°33'53.3425"N	80°52'53.2195"W	9120.81	340.405	0.10	-0.10	0.00	
15517.00	90.520	340.160	6458.22	9209.11	8676.33	-3089.00	1673797.28	14367691.34	39°33'54.1704"N	80°52'53.6031"W	9209.81	340.403	0.32	-0.31	-0.08	



Actual Wellpath Report

Cheat Unit 1H AWP Proj: 21832'

Page 8 of 12



REFERENCE WELLPATH IDENTIFICATION

Operator	ANTERO RESOURCES CORPORATION	Well	Cheat Unit 1H
Field	Tyler	API	47-095-02719-0000
Facility	Elk Fork Pad	Wellbore	Cheat Unit 1H AWB
Slot	Slot #03		

WELLPATH DATA (252 stations)

MD (ft)	Inclination [°]	Azimuth [°]	TVD (ft)	Vert Sect (ft)	North (ft)	East (ft)	Grid East (US ft)	Grid North (US ft)	Latitude	Longitude	Closure Dist (ft)	Closure Dir [°]	DLS [°/100ft]	Build Rate [°/100ft]	Turn Rate [°/100ft]	Comments
15605.00	90.770	340.820	6457.23	9297.10	8759.27	-3118.39	1673767.90	14367774.25	39°33'54.9905"N	80°52'53.9769"W	9297.80	340.404	0.80	0.28	0.75	
15694.00	89.720	340.200	6456.85	9386.09	8843.17	-3148.08	1673738.22	14367858.11	39°33'55.8201"N	80°52'54.3546"W	9386.80	340.405	1.37	-1.18	-0.70	
15871.00	90.000	340.400	6457.28	9563.07	9009.81	-3207.75	1673678.58	14368024.69	39°33'57.4678"N	80°52'55.1137"W	9563.80	340.403	0.19	0.16	0.11	
15959.00	89.940	340.370	6457.33	9651.06	9092.70	-3237.29	1673649.05	14368107.55	39°33'58.2874"N	80°52'55.4895"W	9651.80	340.403	0.08	-0.07	-0.03	
16047.00	90.620	342.120	6456.90	9739.06	9176.02	-3265.58	1673620.77	14368190.84	39°33'59.1113"N	80°52'55.8494"W	9739.78	340.410	2.13	0.77	1.99	
16136.00	89.780	339.950	6456.59	9828.05	9260.18	-3294.50	1673591.86	14368274.97	39°33'59.9435"N	80°52'56.2173"W	9828.77	340.416	2.61	-0.94	-2.44	
16224.00	90.340	340.250	6456.50	9916.04	9342.93	-3324.46	1673561.92	14368357.68	39°34'0.7617"N	80°52'56.5984"W	9916.77	340.413	0.72	0.64	0.34	
16313.00	89.750	341.500	6456.43	10005.03	9427.01	-3353.61	1673532.77	14368441.73	39°34'1.5931"N	80°52'56.9693"W	10005.76	340.417	1.55	-0.66	1.40	
16401.00	89.630	340.590	6456.90	10093.03	9510.24	-3382.20	1673504.20	14368524.92	39°34'2.4160"N	80°52'57.3329"W	10093.76	340.423	1.04	-0.14	-1.03	
16490.00	90.090	341.320	6457.12	10182.03	9594.37	-3411.24	1673475.17	14368609.02	39°34'3.2478"N	80°52'57.7023"W	10182.75	340.427	0.97	0.52	0.82	
16578.00	90.580	341.670	6456.60	10270.03	9677.82	-3439.17	1673447.25	14368692.43	39°34'4.0729"N	80°52'58.0576"W	10270.74	340.437	0.68	0.56	0.40	
16667.00	90.120	341.250	6456.06	10359.02	9762.19	-3467.47	1673418.96	14368776.78	39°34'4.9072"N	80°52'58.4175"W	10359.72	340.445	0.70	-0.52	-0.47	
16755.00	89.880	341.630	6456.06	10447.02	9845.62	-3495.48	1673390.96	14368860.16	39°34'5.7321"N	80°52'58.7738"W	10447.71	340.454	0.51	-0.27	0.43	
16843.00	90.800	341.570	6455.54	10535.01	9929.12	-3523.25	1673363.20	14368943.63	39°34'6.5577"N	80°52'59.1271"W	10535.69	340.463	1.05	1.05	-0.07	
16932.00	90.620	341.790	6454.44	10624.00	10013.60	-3551.23	1673335.24	14369028.08	39°34'7.3930"N	80°52'59.4829"W	10624.66	340.473	0.32	-0.20	0.25	
17021.00	90.370	341.710	6453.67	10712.99	10098.12	-3579.10	1673307.38	14369112.57	39°34'8.2287"N	80°52'59.8374"W	10713.63	340.484	0.29	-0.28	-0.09	
17109.00	89.850	341.380	6453.50	10800.99	10181.59	-3606.95	1673279.53	14369196.01	39°34'9.0540"N	80°53'0.1917"W	10801.62	340.493	0.70	-0.59	-0.37	
17198.00	89.820	341.600	6453.75	10889.99	10265.99	-3635.21	1673251.29	14369280.37	39°34'9.8885"N	80°53'0.5511"W	10890.60	340.501	0.25	-0.03	0.25	
17286.00	90.580	344.030	6453.45	10977.94	10350.05	-3661.21	1673225.30	14369364.40	39°34'10.7196"N	80°53'0.8817"W	10978.53	340.519	2.89	0.86	2.76	
17375.00	90.370	342.040	6452.71	11066.88	10435.17	-3687.17	1673199.34	14369449.48	39°34'11.5612"N	80°53'1.2119"W	11067.43	340.540	2.25	-0.24	-2.24	
17463.00	90.060	341.870	6452.38	11154.87	10518.84	-3714.43	1673172.09	14369533.12	39°34'12.3885"N	80°53'1.5586"W	11155.41	340.551	0.40	-0.35	-0.19	
17552.00	90.310	341.880	6452.09	11243.87	10603.43	-3742.12	1673144.42	14369617.67	39°34'13.2248"N	80°53'1.9107"W	11244.38	340.561	0.28	0.28	0.01	
17640.00	89.420	340.290	6452.30	11331.86	10686.67	-3770.65	1673115.90	14369700.88	39°34'14.0479"N	80°53'2.2736"W	11332.37	340.565	2.07	-1.01	-1.81	
17728.00	89.720	340.560	6452.96	11419.85	10769.58	-3800.13	1673086.43	14369783.76	39°34'14.8677"N	80°53'2.6487"W	11420.37	340.564	0.46	0.34	0.31	
17817.00	89.850	342.260	6453.29	11508.85	10853.93	-3828.50	1673058.07	14369868.08	39°34'15.7018"N	80°53'3.0097"W	11509.36	340.571	1.92	0.15	1.91	
17905.00	89.630	340.340	6453.69	11596.84	10937.28	-3856.71	1673029.87	14369951.39	39°34'16.5259"N	80°53'3.3685"W	11597.35	340.578	2.20	-0.25	-2.18	
17994.00	89.540	340.900	6454.34	11685.84	11021.24	-3886.24	1673000.35	14370035.32	39°34'17.3560"N	80°53'3.7443"W	11686.34	340.577	0.64	-0.10	0.63	
18082.00	89.880	341.810	6454.78	11773.83	11104.62	-3914.38	1672972.23	14370118.66	39°34'18.1804"N	80°53'4.1022"W	11774.33	340.582	1.10	0.39	1.03	
18171.00	90.550	342.590	6454.45	11862.82	11189.36	-3941.58	1672945.04	14370203.37	39°34'19.0182"N	80°53'4.4482"W	11863.30	340.595	1.16	0.75	0.88	
18259.00	89.780	341.370	6454.20	11950.80	11273.04	-3968.81	1672917.82	14370287.01	39°34'19.8456"N	80°53'4.7945"W	11951.27	340.605	1.64	-0.87	-1.39	



Actual Wellpath Report

Cheat Unit 1H AWP Proj: 21832'

Page 9 of 12



REFERENCE WELLPATH IDENTIFICATION

Operator	ANTERO RESOURCES CORPORATION	Well	Cheat Unit 1H
Field	Tyler	API	47-095-02719-0000
Facility	Elk Fork Pad	Wellbore	Cheat Unit 1H AWB
Slot	Slot #03		

WELLPATH DATA (252 stations)

MD (ft)	Inclination (°)	Azimuth (°)	TVD (ft)	Vert Sect (ft)	North (ft)	East (ft)	Grid East (US ft)	Grid North (US ft)	Latitude	Longitude	Closure Dist (ft)	Closure Dir (°)	DLS (°/100ft)	Build Rate (°/100ft)	Turn Rate (°/100ft)	Comments
18348.00	90.220	341.680	6454.20	12039.80	11357.45	-3997.01	1672889.63	14370371.39	39°34'20.6803"N	80°53'5.1532"W	12040.26	340.612	0.60	0.49	0.35	
18436.00	90.490	341.910	6453.65	12127.79	11441.04	-4024.50	1672862.15	14370454.95	39°34'21.5068"N	80°53'5.5029"W	12128.23	340.620	0.40	0.31	0.26	
18525.00	89.780	341.170	6453.44	12216.79	11525.46	-4052.68	1672833.98	14370539.34	39°34'22.3415"N	80°53'5.8614"W	12217.22	340.627	1.15	-0.80	-0.83	
18613.00	89.910	341.310	6453.68	12304.79	11608.79	-4080.98	1672805.69	14370622.63	39°34'23.1653"N	80°53'6.2215"W	12305.22	340.631	0.22	0.15	0.16	
18702.00	90.150	341.520	6453.83	12393.79	11693.15	-4109.35	1672777.34	14370706.95	39°34'23.9994"N	80°53'6.5823"W	12394.21	340.637	0.36	0.27	0.24	
18790.00	89.450	341.270	6453.94	12481.78	11776.55	-4137.42	1672749.27	14370790.32	39°34'24.8240"N	80°53'6.9395"W	12482.20	340.642	0.84	-0.80	-0.28	
18879.00	89.600	341.100	6454.68	12570.78	11860.79	-4166.13	1672720.58	14370874.53	39°34'25.6570"N	80°53'7.3047"W	12571.19	340.646	0.25	0.17	-0.19	
18967.00	89.540	341.200	6455.34	12658.78	11944.07	-4194.56	1672692.16	14370957.77	39°34'26.4804"N	80°53'7.6664"W	12659.19	340.650	0.13	-0.07	0.11	
19056.00	89.690	341.650	6455.94	12747.77	12028.43	-4222.91	1672663.82	14371042.10	39°34'27.3145"N	80°53'8.0271"W	12748.18	340.655	0.53	0.17	0.51	
19144.00	89.850	341.930	6456.29	12835.77	12112.02	-4250.41	1672636.34	14371125.66	39°34'28.1410"N	80°53'8.3769"W	12836.16	340.663	0.37	0.18	0.32	
19233.00	89.540	341.380	6456.76	12924.76	12196.49	-4278.42	1672608.34	14371210.10	39°34'28.9753"N	80°53'8.7332"W	12925.14	340.670	0.71	-0.35	-0.62	
19321.00	89.320	340.960	6457.64	13012.76	12279.78	-4306.82	1672579.95	14371293.35	39°34'29.7998"N	80°53'9.0946"W	13013.14	340.673	0.54	-0.25	-0.48	
19410.00	89.690	341.680	6458.41	13101.75	12364.09	-4335.32	1672551.45	14371377.63	39°34'30.6333"N	80°53'9.4572"W	13102.13	340.677	0.91	0.42	0.81	
19498.00	89.450	340.940	6459.07	13189.75	12447.44	-4363.52	1672523.27	14371460.95	39°34'31.4575"N	80°53'9.8160"W	13190.12	340.682	0.88	-0.27	-0.84	
19587.00	90.000	342.110	6459.49	13278.74	12531.85	-4391.72	1672495.08	14371545.33	39°34'32.2921"N	80°53'10.1748"W	13279.10	340.687	1.45	0.62	1.31	
19675.00	89.850	341.970	6459.61	13366.73	12615.57	-4418.86	1672467.95	14371629.00	39°34'33.1198"N	80°53'10.5199"W	13367.08	340.696	0.23	-0.17	-0.16	
19764.00	90.000	341.700	6459.73	13455.72	12700.13	-4446.60	1672440.22	14371713.53	39°34'33.9559"N	80°53'10.8729"W	13456.06	340.704	0.35	0.17	-0.30	
19852.00	89.600	341.330	6460.03	13543.72	12783.59	-4474.51	1672412.33	14371796.96	39°34'34.7811"N	80°53'11.2279"W	13544.05	340.709	0.62	-0.45	-0.42	
19941.00	89.690	341.410	6460.58	13632.72	12867.92	-4502.94	1672383.91	14371881.26	39°34'35.6150"N	80°53'11.5896"W	13633.05	340.713	0.14	0.10	0.09	
20029.00	89.510	341.310	6461.20	13720.72	12951.31	-4531.06	1672355.79	14371964.61	39°34'36.4394"N	80°53'11.9475"W	13721.04	340.717	0.23	-0.20	-0.11	
20118.00	89.450	341.250	6462.01	13809.71	13035.59	-4559.63	1672327.24	14372048.86	39°34'37.2728"N	80°53'12.3109"W	13810.03	340.721	0.10	-0.07	-0.07	
20206.00	89.780	341.300	6462.60	13897.71	13118.93	-4587.87	1672299.00	14372132.17	39°34'38.0968"N	80°53'12.6703"W	13898.02	340.725	0.38	0.37	0.06	
20295.00	89.940	341.840	6462.82	13986.71	13203.37	-4616.01	1672270.88	14372216.57	39°34'38.9317"N	80°53'13.0283"W	13987.01	340.730	0.63	0.18	0.61	
20383.00	89.510	341.470	6463.24	14074.70	13286.90	-4643.71	1672243.19	14372300.06	39°34'39.7575"N	80°53'13.3806"W	14075.00	340.736	0.64	-0.49	-0.42	
20472.00	89.660	341.770	6463.88	14163.69	13371.35	-4671.77	1672215.14	14372384.49	39°34'40.5928"N	80°53'13.7377"W	14163.99	340.741	0.38	0.17	0.34	
20560.00	90.060	342.210	6464.10	14251.68	13455.04	-4698.98	1672187.94	14372468.14	39°34'41.4200"N	80°53'14.0838"W	14251.97	340.749	0.68	0.45	0.50	
20649.00	89.540	341.510	6464.41	14340.67	13539.62	-4726.69	1672160.25	14372552.68	39°34'42.2562"N	80°53'14.4363"W	14340.95	340.756	0.98	-0.58	-0.79	
20737.00	90.030	341.180	6464.74	14428.67	13622.99	-4754.84	1672132.11	14372636.03	39°34'43.0806"N	80°53'14.7945"W	14428.94	340.759	0.67	0.56	-0.37	
20825.00	90.430	341.290	6464.99	14516.67	13706.31	-4783.14	1672103.81	14372719.31	39°34'43.9044"N	80°53'15.1547"W	14516.94	340.762	0.47	0.45	0.13	
20914.00	90.060	341.310	6464.00	14605.67	13790.61	-4811.68	1672075.29	14372803.58	39°34'44.7380"N	80°53'15.5178"W	14605.93	340.766	0.42	-0.42	0.02	



Actual Wellpath Report

Cheat Unit 1H AWP Proj: 21832'

Page 10 of 12



REFERENCE WELLPATH IDENTIFICATION

Operator	ANTERO RESOURCES CORPORATION	Well	Cheat Unit 1H
Field	Tyler	API	47-095-02719-0000
Facility	Elk Fork Pad	Wellbore	Cheat Unit 1H AWB
Slot	Slot #03		

WELLPATH DATA (252 stations) † = interpolated, ‡ = extrapolated station

MD [ft]	Inclination [°]	Azimuth [°]	TVD [ft]	Vert Sect [ft]	North [ft]	East [ft]	Grid East [US ft]	Grid North [US ft]	Latitude	Longitude	Closure Dist [ft]	Closure Dir [°]	DLS [°/100ft]	Build Rate [°/100ft]	Turn Rate [°/100ft]	Comments
21002.00	90.340	341.900	6463.70	14693.67	13874.12	-4839.45	1672047.53	14372887.05	39°34'45.5636"N	80°53'15.8711"W	14693.92	340.771	0.74	0.32	0.67	
21091.00	90.000	341.740	6463.43	14782.66	13958.67	-4867.22	1672019.77	14372971.57	39°34'46.3996"N	80°53'16.2244"W	14782.91	340.777	0.42	-0.38	-0.18	
21179.00	90.000	341.630	6463.43	14870.65	14042.22	-4894.87	1671992.13	14373055.08	39°34'47.2256"N	80°53'16.5762"W	14870.90	340.782	0.12	0.00	-0.12	
21268.00	89.780	340.950	6463.60	14959.65	14126.51	-4923.42	1671963.59	14373139.34	39°34'48.0591"N	80°53'16.9395"W	14959.89	340.785	0.80	-0.25	-0.76	
21356.00	89.290	341.220	6464.32	15047.65	14209.76	-4951.94	1671935.08	14373222.56	39°34'48.8822"N	80°53'17.3025"W	15047.89	340.787	0.64	-0.56	0.31	
21444.00	89.320	341.360	6465.39	15135.64	14293.10	-4980.17	1671906.86	14373305.87	39°34'49.7062"N	80°53'17.6616"W	15135.88	340.790	0.16	0.03	0.16	
21533.00	89.570	341.720	6466.25	15224.64	14377.52	-5008.35	1671878.70	14373390.25	39°34'50.5409"N	80°53'18.0202"W	15224.87	340.794	0.49	0.28	0.40	
21621.00	89.820	342.570	6466.72	15312.62	14461.28	-5035.33	1671851.73	14373473.97	39°34'51.3690"N	80°53'18.3634"W	15312.84	340.802	1.01	0.28	0.97	
21710.00	89.350	341.270	6467.36	15401.61	14545.88	-5062.95	1671824.12	14373558.54	39°34'52.2055"N	80°53'18.7148"W	15401.82	340.809	1.55	-0.53	-1.46	
21798.00	89.170	341.560	6468.50	15489.60	14629.28	-5090.99	1671796.08	14373641.91	39°34'53.0301"N	80°53'19.0717"W	15489.81	340.812	0.39	-0.20	0.33	
21809.00	89.510	341.670	6468.62	15500.60	14639.72	-5094.46	1671792.62	14373652.35	39°34'53.1333"N	80°53'19.1158"W	15500.80	340.813	3.25	3.09	1.00	
21832.00‡	89.510	341.670	6468.82	15523.59	14661.55	-5101.70	1671785.39	14373674.17	39°34'53.3492"N	80°53'19.2079"W	15523.80	340.814	0.00	0.00	0.00	Projected MD at TD: 21832'

HOLE & CASING SECTIONS - Ref Wellbore: Cheat Unit 1H AWB Ref Wellpath: Cheat Unit 1H AWP Proj: 21832'

String/Diameter	Start MD [ft]	End MD [ft]	Interval [ft]	Start TVD [ft]	End TVD [ft]	Start N/S [ft]	Start E/W [ft]	End N/S [ft]	End E/W [ft]
20in Conductor	25.50	105.50	80.00	25.50	105.50	0.00	0.00	-0.22	0.12
17.5in Open Hole	105.50	394.00	288.50	105.50	393.99	-0.22	0.12	-1.95	1.13
13.375in Casing Surface	25.50	373.60	348.10	25.50	373.59	0.00	0.00	-1.83	1.03
12.25in Open Hole	394.00	2595.00	2201.00	393.99	2594.94	-1.95	1.13	-9.83	5.74
9.625in Casing Intermediate	25.50	2575.00	2549.50	25.50	2574.94	0.00	0.00	-9.94	5.64
8.75in Open Hole	2595.00	5722.00	3127.00	2594.94	5719.07	-9.83	5.74	-35.08	87.64
8.5in Open Hole	5722.00	21832.00	16110.00	5719.07	6468.82	-35.08	87.64	14661.55	-5101.70
5.5in Casing Production	25.50	21832.00	21806.50	25.50	6468.82	0.00	0.00	14661.55	-5101.70



Actual Wellpath Report

Cheat Unit 1H AWP Proj: 21832'

Page 11 of 12



REFERENCE WELLPATH IDENTIFICATION			
Operator	ANTERO RESOURCES CORPORATION	Well	Cheat Unit 1H
Field	Tyler	API	47-095-02719-0000
Facility	Elk Fork Pad	Wellbore	Cheat Unit 1H AWB
Slot	Slot #03		

TARGETS								
Name	TVD [ft]	North [ft]	East [ft]	Grid East [US ft]	Grid North [US ft]	Latitude	Longitude	Shape
Cheat Unit 1H POE Rev-1	6497.00	130.34	-162.64	1676722.47	14359148.78	39°32'29.6685"N	80°52'16.3935"W	point
Cheat Unit 1H POE Rev-3	6502.00	355.21	-186.75	1676698.37	14359373.56	39°32'31.8913"N	80°52'16.6972"W	point
Cheat Unit 1H AZI Rev-2	6537.00	884.93	-420.89	1676464.32	14359903.06	39°32'37.1299"N	80°52'19.6763"W	point
Cheat Unit 1H BHL Rev-3	6537.00	14674.55	-5140.24	1671746.86	14373687.16	39°34'53.4781"N	80°53'19.6999"W	point
Cheat Unit 1H LP Rev-3	6537.00	553.87	-283.91	1676601.24	14359572.14	39°32'33.8561"N	80°52'17.9338"W	point
Cheat Unit 1H 50' L/R Hard Line Rev-2	7000.00	7779.74	-2780.56	1674105.59	14366795.11	39°33'45.3052"N	80°52'49.6799"W	rectangle
2D Rectangle 14574.8 x 100.								

WELLPATH COMPOSITION - Ref Wellbore: Cheat Unit 1H AWB Ref Wellpath: Cheat Unit 1H AWP Proj: 21832'						
Start MD [ft]	End MD [ft]	Positional Uncertainty Model	Log Name/Comment	Wellbore	Survey Date	
25.50	384.00	Gyrodata 2015 - GC+WIR+DPIPE	01 Gyrodata MS Gyro <17-1/2"> (100'-384')	Cheat Unit 1H AWB	13/Jan/2021	
384.00	2518.00	BH NaviTrak (2019) (Axial Corr+HRGM)	02 APS EM <12-1/4"> (384')(418'-2518')	Cheat Unit 1H AWB	13/Jan/2021	
2518.00	5652.00	BH NaviTrak (2019) (Axial Corr+HRGM)	03 APS EM <8-3/4"> (2518')(2639'-5652')	Cheat Unit 1H AWB	02/Feb/2021	
5652.00	21832.00	BH AutoTrak Curve/eXpress (2019) (HRGM, Short spacing)	04 BH AT Curve <8-1/2"> (5652')(5697'-21809')	Cheat Unit 1H AWB	02/Feb/2021	



Actual Wellpath Report

Cheat Unit 1H AWP Proj: 21832'

Page 12 of 12



REFERENCE WELLPAIR IDENTIFICATION			
Operator	ANTERO RESOURCES CORPORATION	Well	Cheat Unit 1H
Field	Tyler	API	47-095-02719-0000
Facility	Elk Fork Pad	Wellbore	Cheat Unit 1H AWB
Slot	Slot #03		

COMMENTS

Wellpath general comments

API: 47-095-02719-0000
BH Job #: 110728657-B
Rig: H&P 317
Duration: 2/4/2021-2/9/2021
Gyrodata MS Gyro <17-1/2"> (100'-384')
APS EM <12-1/4"> (384')(418'-2518')
APS EM <8-3/4"> (2518')(2639'-5652')
BH AT Curve <8-1/2"> (5652')(5697'-21809')
Sycamore: 6279' MD
Middlesex: 6415' MD
Burkett: 6558' MD
Tully: 6595' MD
Marcellus POE: 6710' MD
Projected MD at TD: 21832'