



ANTERO RESOURCES CORPORATION



Location: Tyler County, WV
 Field: Tyler
 Facility: Elk Fork Pad

Slot: Slot #01
 Well: Tygart Unit 1H
 Wellbore: Tygart Unit 1H PWB

Scale 1 inch = 2500' Easting (ft)
 -8750 -7500 -6250 -5000 -3750 -2500 -1250 0

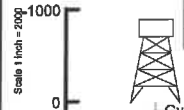
Plot reference wellpath is Tygart Unit 1H PWP Rev-A.0	Grid System: NAD27 / UTM Zone 17 North, US feet
True vertical depths are referenced to H&P 317 (RKB)	North Reference: Grid north
Reference wellpath measured depths are referenced to H&P 317 (RKB)	Scale: True distance
H&P 317 (RKB) to Mean Sea Level: 1151.5 feet	Coordinates are in feet referenced to Slot
Mean Sea Level to Ground level (At Slot: Slot #01): -1126 feet	Depths are in feet
Offset wellpath MDs are referenced to each path's default MD datum	Created by: edwaryan on 2021-01-27; Database: WA_MPL_EASTERNUS_Def

Location Information

Facility Name	Grid East (US ft)	Grid North (US ft)	Latitude	Longitude		
Elk Fork Pad	1676885.038	14359018.492	39°32'28.3780"N	80°52'14.3200"W		
Slot	Local N (ft)	Local E (ft)	Grid East (US ft)	Grid North (US ft)	Latitude	Longitude
Slot #01	-2.67	-29.84	1676885.210	14359015.820	39°32'28.3520"N	80°52'14.7009"W
Comment Tygart Unit 1H					25.5ft	
H&P 317 (RKB) to Ground level (At Slot: Slot #01)					-1126ft	
Mean Sea Level to Ground level (At Slot: Slot #01)					1151.5ft	
H&P 317 (RKB) to Mean Sea Level						

Well Profile Data

Design Comment	MD (ft)	Inc (")	Az (°)	TVD (ft)	Local N (ft)	Local E (ft)	DLS (°/100ft)	VS (ft)
Tie On	25.50	0.000	264.000	25.50	0.00	0.00	0.00	0.00
Nudge	470.00	0.000	264.000	470.00	0.00	0.00	0.00	0.00
End of Build	770.00	6.000	264.000	769.45	-1.64	-15.61	2.00	3.50
Hold	1370.00	6.000	264.000	1368.17	-8.20	-77.96	0.00	17.49
End of Drop	1670.00	0.000	264.675	1665.62	-9.84	-93.59	2.00	20.99
KOP 1	2674.38	0.000	264.675	2670.00	-9.84	-93.59	0.00	20.99
End of Build	3614.16	28.193	264.675	3572.31	-30.86	-319.20	3.00	74.14
Curve KOP	6265.02	28.193	264.675	5908.67	-147.09	-1566.19	0.00	367.89
POE	7124.33	73.061	341.109	6483.00	274.87	-1948.38	8.00	890.86
Landing Pt.	7335.62	90.000	341.109	6514.00	472.07	-2015.86	8.00	1099.29
BHL	21797.64	90.000	341.109	6514.00	14154.91	-6698.20	0.00	15561.11

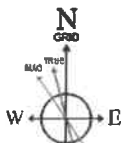


Gyrodata MS Gyro <17-1/2"> (100°-384') : 0.25" Inc, 100.00ft MD, 100.00ft TVD, -0.05ft VS
 APS EM <12-1/4"> (384')(419°-2533') : 0.17" Inc, 419.00ft MD, 419.00ft TVD, -0.62ft VS

Well Data

Slot	Well	Wellbore	Wellpath
Slot #01	Tygart Unit 1H	Tygart Unit 1H AWB	Tygart Unit 1H AWP Proj: 21803'
Slot #01	Tygart Unit 1H	Tygart Unit 1H PWB	Tygart Unit 1H PWP Rev-A.0

APS EM <8-3/4"> (2533')(2639°-6183') : 0.62" Inc, 2639.00ft MD, 2633.82ft TVD, 14.92ft VS



User specified (HDGM) Dip: 66.48° Field: 51749 nT
 Magnetic North is 7.35 degrees West of True North (at 17/Jan/2021)
 Grid North is 0.08 degrees East of True North
 To correct azimuth from True to Grid subtract 0.08 degrees
 To correct azimuth from Magnetic to Grid subtract 7.43 degrees

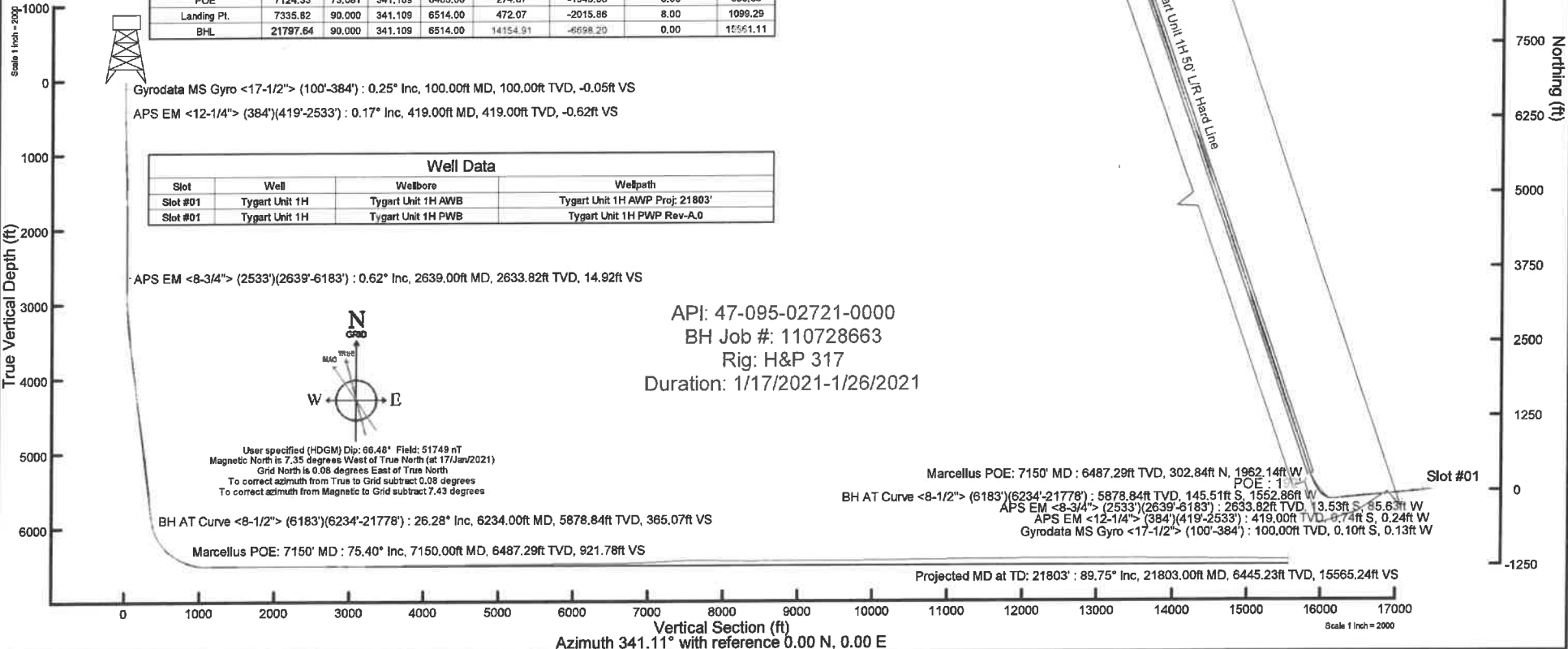
BH AT Curve <8-1/2"> (6183')(6234°-21778') : 26.28" Inc, 6234.00ft MD, 5878.84ft TVD, 365.07ft VS

Marcellus POE: 7150' MD : 75.40" Inc, 7150.00ft MD, 6487.29ft TVD, 921.76ft VS

API: 47-095-02721-0000
 BH Job #: 110728663
 Rig: H&P 317
 Duration: 1/17/2021-1/26/2021

Marcellus POE: 7150' MD : 6487.29ft TVD, 302.84ft N, 1962.14ft W
 BH AT Curve <8-1/2"> (6183')(6234°-21778') : 5878.84ft TVD, 145.51ft S, 1552.86ft W
 APS EM <8-3/4"> (2533')(2639°-6183') : 2633.82ft TVD, 13.53ft S, 85.63ft W
 APS EM <12-1/4"> (384')(419°-2533') : 419.00ft TVD, 0.74ft S, 0.24ft W
 Gyrodata MS Gyro <17-1/2"> (100°-384') : 100.00ft TVD, 0.10ft S, 0.13ft W

Projected MD at TD: 21803' : 89.75" Inc, 21803.00ft MD, 6445.23ft TVD, 15565.24ft VS



Vertical Section (ft)
 Azimuth 341.11° with reference 0.00 N, 0.00 E

Scale 1 inch = 2000'



Actual Wellpath Report

Tygart Unit 1H AWP Proj: 21803'

Page 1 of 13



REFERENCE WELLPATH IDENTIFICATION			
Operator	ANTERO RESOURCES CORPORATION	Well	Tygart Unit 1H
Field	Tyler	API	47-095-02721-0000
Facility	Elk Fork Pad	Wellbore	Tygart Unit 1H AWB
Slot	Slot #01		

REPORT SETUP INFORMATION			
Projection System	NAD27 / UTM Zone 17 North, US feet	Software System	WellArchitect® 6.0
North Reference	Grid	User	Edsaryar
Scale	0.999602	Report Generated	27/Jan/2021 at 12:20
Convergence at slot	0.08° East	Database	WA_MPL_EASTERNUS_Defn

WELLPATH LOCATION						
	Local coordinates		Grid coordinates		Geographic coordinates	
	North[ft]	East[ft]	Easting[US ft]	Northing[US ft]	Latitude	Longitude
Slot Location	-2.67	-29.84	1676855.21	14359015.82	39°32'28.3520"N	80°52'14.7009"W
Facility Reference Pt			1676885.04	14359018.49	39°32'28.3780"N	80°52'14.3200"W
Field Reference Pt			0.00	0.00	0°00'0.0000"	85°29'19.3013"W

WELLPATH DATUM			
Calculation method	Minimum curvature	H&P 317 (RKB) to Facility Vertical Datum	1151.50ft
Horizontal Reference Pt	Slot	H&P 317 (RKB) to Mean Sea Level	1151.50ft
Vertical Reference Pt	H&P 317 (RKB)	H&P 317 (RKB) to Ground Level at Slot (Slot #01)	25.50ft
MD Reference Pt	H&P 317 (RKB)	Section Origin	N 0.00, E 0.00 ft
Field Vertical Reference	Mean Sea Level	Section Azimuth	341.11°



Actual Wellpath Report

Tygart Unit 1H AWP Proj: 21803'

Page 2 of 13



REFERENCE WELLPATH IDENTIFICATION

Operator	ANTERO RESOURCES CORPORATION	Well	Tygart Unit 1H
Field	Tyler	API	47-095-02721-0000
Facility	Eik Fork Pad	Wellbore	Tygart Unit 1H AWB
Slot	Slot #01		

WELLPATH DATA (255 stations) † = interpolated, ‡ = extrapolated station

MD (ft)	Inclination (°)	Azimuth (°)	TVD (ft)	Vert Sect (ft)	North (ft)	East (ft)	Grid East (US ft)	Grid North (US ft)	Latitude	Longitude	Closure Dist (ft)	Closure Dir (°)	DLS (°/100ft)	Build Rate (°/100ft)	Turn Rate (°/100ft)	Comments
0.00†	0.000	232.340	0.00	0.00	0.00	0.00	1676855.21	14359015.82	39°32'28.3520"N	80°52'14.7009"W	0.00	0.000	0.00	0.00	0.00	
25.50	0.000	232.340	25.50	0.00	0.00	0.00	1676855.21	14359015.82	39°32'28.3520"N	80°52'14.7009"W	0.00	0.000	0.00	0.00	0.00	
100.00	0.250	232.340	100.00	-0.05	-0.10	-0.13	1676855.08	14359015.72	39°32'28.3510"N	80°52'14.7026"W	0.16	232.340	0.34	0.34	0.00	Gyrodata MS Gyro <17-1/2"> (100'-384')
200.00	0.140	161.370	200.00	-0.24	-0.35	-0.26	1676854.95	14359015.47	39°32'28.3486"N	80°52'14.7043"W	0.44	216.983	0.24	-0.11	-70.97	
300.00	0.180	180.280	300.00	-0.52	-0.62	-0.22	1676854.99	14359015.20	39°32'28.3459"N	80°52'14.7038"W	0.66	199.836	0.07	0.04	18.91	
384.00	0.050	237.740	384.00	-0.65	-0.77	-0.26	1676854.95	14359015.05	39°32'28.3444"N	80°52'14.7042"W	0.81	198.312	0.19	-0.15	68.40	
419.00	0.170	35.430	419.00	-0.62	-0.74	-0.24	1676854.97	14359015.08	39°32'28.3447"N	80°52'14.7040"W	0.78	197.899	0.62	0.34	450.54	APS EM <12-1/4"> (384')(419'-2533')
509.00	1.430	292.100	508.99	0.19	-0.21	-1.20	1676854.01	14359015.61	39°32'28.3500"N	80°52'14.7163"W	1.22	260.215	1.64	1.40	-114.81	
600.00	2.480	275.390	599.94	1.75	0.40	-4.21	1676851.00	14359016.22	39°32'28.3561"N	80°52'14.7547"W	4.23	275.489	1.30	1.15	-18.36	
690.00	3.370	273.690	689.82	3.56	0.76	-8.79	1676846.42	14359016.58	39°32'28.3596"N	80°52'14.8132"W	8.83	274.928	0.99	0.99	-1.89	
780.00	4.870	278.860	779.58	6.36	1.52	-15.21	1676840.01	14359017.34	39°32'28.3672"N	80°52'14.8950"W	15.28	275.696	1.72	1.67	5.74	
870.00	6.570	274.480	869.13	10.18	2.51	-24.12	1676831.10	14359018.33	39°32'28.3771"N	80°52'15.0087"W	24.25	275.936	1.95	1.89	-4.87	
960.00	7.230	270.530	958.48	14.11	2.96	-34.91	1676820.31	14359018.78	39°32'28.3818"N	80°52'15.1465"W	35.04	274.849	0.90	0.73	-4.39	
1050.00	6.900	270.100	1047.80	17.75	3.02	-45.98	1676809.25	14359018.84	39°32'28.3825"N	80°52'15.2878"W	46.08	273.762	0.37	-0.37	-0.48	
1144.00	7.450	269.150	1141.06	21.47	2.94	-67.72	1676797.51	14359018.76	39°32'28.3819"N	80°52'15.4377"W	57.80	272.919	0.60	0.59	-1.01	
1237.00	7.220	270.080	1233.30	25.24	2.86	-69.59	1676785.64	14359018.68	39°32'28.3813"N	80°52'15.5892"W	69.65	272.355	0.28	-0.25	1.00	
1331.00	5.810	260.150	1326.69	27.91	2.06	-80.19	1676775.05	14359017.88	39°32'28.3735"N	80°52'15.7245"W	80.22	271.469	1.91	-1.50	-10.56	
1424.00	4.200	240.670	1419.34	28.03	-0.42	-87.80	1676767.45	14359015.40	39°32'28.3491"N	80°52'15.8216"W	87.80	269.728	2.49	-1.73	-20.95	
1518.00	3.450	218.900	1513.14	25.90	-4.31	-92.57	1676762.67	14359011.52	39°32'28.3108"N	80°52'15.8827"W	92.67	267.337	1.72	-0.80	-23.16	
1612.00	2.310	192.590	1607.02	22.77	-8.36	-94.76	1676760.48	14359007.47	39°32'28.2708"N	80°52'15.9107"W	95.13	264.961	1.83	-1.21	-27.99	
1705.00	2.250	174.240	1699.95	19.40	-12.00	-94.99	1676760.26	14359003.82	39°32'28.2347"N	80°52'15.9136"W	95.74	262.799	0.78	-0.06	-19.73	
1799.00	1.030	136.110	1793.91	16.84	-14.45	-94.22	1676761.03	14359001.38	39°32'28.2106"N	80°52'15.9038"W	95.32	261.283	1.67	-1.30	-40.56	
1892.00	1.350	86.780	1886.89	15.78	-14.99	-92.54	1676762.70	14359000.84	39°32'28.2052"N	80°52'15.8825"W	93.75	260.801	1.11	0.34	-53.04	
1986.00	1.430	86.510	1980.86	15.17	-14.85	-90.27	1676764.98	14359000.97	39°32'28.2065"N	80°52'15.8534"W	91.48	260.656	0.09	0.09	-0.29	
2079.00	1.380	75.810	2073.84	14.77	-14.51	-88.02	1676767.22	14359001.32	39°32'28.2099"N	80°52'15.8248"W	89.21	260.641	0.29	-0.05	-11.51	
2173.00	0.350	110.460	2167.82	14.50	-14.33	-86.66	1676768.59	14359001.49	39°32'28.2116"N	80°52'15.8073"W	87.84	260.610	1.18	-1.10	36.86	
2266.00	0.060	284.380	2260.82	14.34	-14.42	-86.44	1676768.81	14359001.41	39°32'28.2107"N	80°52'15.8045"W	87.63	260.530	0.44	-0.31	187.01	
2360.00	0.100	43.830	2354.82	14.41	-14.35	-86.43	1676768.81	14359001.48	39°32'28.2114"N	80°52'15.8044"W	87.61	260.575	0.15	0.04	127.07	
2453.00	0.300	41.990	2447.82	14.56	-14.11	-86.21	1676769.03	14359001.72	39°32'28.2138"N	80°52'15.8016"W	87.36	260.707	0.22	0.22	-1.98	
2533.00	0.040	350.830	2527.82	14.69	-13.92	-86.08	1676769.17	14359001.90	39°32'28.2156"N	80°52'15.7999"W	87.19	260.811	0.35	-0.32	-63.95	



Actual Wellpath Report

Tygart Unit 1H AWP Proj: 21803'
Page 3 of 13



REFERENCE WELLPATH IDENTIFICATION			
Operator	ANTERO RESOURCES CORPORATION	Well	Tygart Unit 1H
Field	Tyler	API	47-095-02721-0000
Facility	Elk Fork Pad	Wellbore	Tygart Unit 1H AWB
Slot	Slot #01		

WELLPATH DATA (255 stations)																
MD	Inclination	Azimuth	TVD	Vert Sect	North	East	Grid East	Grid North	Latitude	Longitude	Closure Dist	Closure Dir	DLS	Build Rate	Turn Rate	Comments
(ft)	(°)	(°)	(ft)	(ft)	(ft)	(ft)	(US ft)	(US ft)			(ft)	(°)	(ft/100ft)	(ft/100ft)	(ft/100ft)	
2639.00	0.620	51.870	2633.82	14.92	-13.53	-85.63	1676769.61	14359002.29	39°32'28.2195"N	80°52'15.7942"W	86.69	261.019	0.57	0.55	57.58	APS EM <8-3/4"> (2533)(2639-6183)
2727.00	2.870	265.270	2721.79	15.61	-13.42	-87.45	1676767.79	14359002.40	39°32'28.2206"N	80°52'15.8174"W	88.48	261.275	3.87	2.56	-166.59	
2816.00	8.430	271.520	2810.32	18.44	-13.43	-96.20	1676759.05	14359002.39	39°32'28.2206"N	80°52'15.9291"W	97.13	262.052	6.28	6.25	7.02	
2904.00	9.200	270.040	2897.28	22.97	-13.26	-109.68	1676745.57	14359002.57	39°32'28.2225"N	80°52'16.1012"W	110.48	263.109	0.91	0.87	-1.68	
2993.00	9.760	272.900	2985.07	28.08	-12.87	-124.33	1676730.93	14359002.96	39°32'28.2266"N	80°52'16.2882"W	125.00	264.091	0.82	0.63	3.21	
3081.00	13.010	275.320	3071.32	34.91	-11.57	-141.65	1676713.62	14359004.25	39°32'28.2396"N	80°52'16.5092"W	142.12	265.329	3.73	3.69	2.75	
3170.00	15.470	273.170	3157.58	43.48	-9.99	-163.48	1676691.80	14359005.84	39°32'28.2556"N	80°52'16.7878"W	163.78	266.504	2.83	2.76	-2.42	
3263.00	18.150	270.250	3246.60	52.89	-9.24	-190.35	1676664.93	14359006.59	39°32'28.2634"N	80°52'17.1308"W	190.58	267.222	3.02	2.88	-3.14	
3351.00	20.260	265.870	3329.71	61.26	-10.28	-219.26	1676636.04	14359005.55	39°32'28.2535"N	80°52'17.4998"W	219.50	267.317	2.90	2.40	-4.98	
3440.00	22.250	262.310	3412.65	68.46	-13.64	-251.33	1676603.98	14359002.18	39°32'28.2207"N	80°52'17.9093"W	251.70	266.893	2.66	2.24	-4.00	
3528.00	24.550	256.070	3493.42	73.28	-20.27	-285.60	1676569.73	14358995.55	39°32'28.1557"N	80°52'18.3468"W	286.32	265.940	3.84	2.61	-7.09	
3617.00	27.250	255.550	3573.47	76.46	-29.81	-323.28	1676532.06	14358986.02	39°32'28.0619"N	80°52'18.8279"W	324.65	264.732	3.04	3.03	-0.58	
3705.00	29.110	258.710	3651.04	80.85	-39.03	-363.79	1676491.57	14358976.81	39°32'27.9714"N	80°52'19.3451"W	365.88	263.876	2.71	2.11	3.59	
3794.00	29.780	261.370	3728.55	87.65	-46.58	-406.87	1676448.50	14358969.25	39°32'27.8973"N	80°52'19.8952"W	409.53	263.468	1.65	0.75	2.99	
3882.00	28.990	262.020	3805.23	95.58	-52.82	-449.60	1676405.79	14358963.02	39°32'27.8363"N	80°52'20.4407"W	452.69	263.299	0.97	-0.90	0.74	
3971.00	28.970	265.970	3883.09	105.19	-57.33	-492.46	1676362.95	14358958.51	39°32'27.7923"N	80°52'20.9879"W	495.79	263.359	2.15	-0.02	4.44	
4059.00	28.720	268.040	3960.18	116.81	-59.55	-534.85	1676320.57	14358956.29	39°32'27.7709"N	80°52'21.5290"W	538.16	263.646	1.17	-0.28	2.35	
4148.00	27.700	270.220	4038.61	129.81	-60.21	-576.91	1676278.53	14358955.64	39°32'27.7651"N	80°52'22.0658"W	580.04	264.042	1.63	-1.15	2.45	
4236.00	27.100	267.920	4116.74	142.30	-60.86	-617.39	1676238.06	14358954.99	39°32'27.7592"N	80°52'22.5826"W	620.39	264.371	1.38	-0.68	-2.61	
4325.00	26.520	267.710	4196.17	153.84	-62.39	-657.51	1676197.97	14358953.46	39°32'27.7447"N	80°52'23.0947"W	660.46	264.590	0.66	-0.65	-0.24	
4413.00	26.460	268.800	4274.93	165.41	-63.58	-696.74	1676158.75	14358952.26	39°32'27.7334"N	80°52'23.5954"W	699.63	264.786	0.56	-0.07	1.24	
4502.00	27.510	267.790	4354.24	177.34	-64.79	-737.10	1676118.40	14358951.06	39°32'27.7220"N	80°52'24.1107"W	739.94	264.977	1.29	1.18	-1.13	
4590.00	28.620	266.100	4431.89	188.62	-67.01	-778.44	1676077.08	14358948.84	39°32'27.7007"N	80°52'24.6384"W	781.32	265.080	1.55	1.26	-1.92	
4679.00	28.470	265.130	4510.07	199.28	-70.26	-820.84	1676034.70	14358945.59	39°32'27.6692"N	80°52'25.1797"W	823.84	265.108	0.55	-0.17	-1.09	
4767.00	28.650	265.870	4587.37	209.73	-73.56	-862.78	1675992.77	14358942.29	39°32'27.6371"N	80°52'25.7151"W	865.91	265.127	0.45	0.20	0.84	
4856.00	29.010	266.330	4665.33	220.83	-76.47	-905.60	1675949.97	14358939.38	39°32'27.6089"N	80°52'26.2617"W	908.82	265.173	0.48	0.40	0.52	
4944.00	29.140	265.430	4742.24	231.74	-79.55	-948.25	1675907.34	14358936.30	39°32'27.5791"N	80°52'26.8061"W	951.58	265.205	0.52	0.15	-1.02	
5033.00	29.600	264.940	4819.81	242.35	-83.21	-991.75	1675863.86	14358932.64	39°32'27.5435"N	80°52'27.3614"W	995.23	265.204	0.58	0.52	-0.55	
5121.00	28.930	265.470	4896.57	252.82	-86.81	-1034.62	1675821.01	14358929.04	39°32'27.5085"N	80°52'27.9086"W	1038.25	265.204	0.82	-0.76	0.60	
5210.00	29.950	267.760	4974.08	264.53	-89.38	-1078.28	1675777.36	14358926.48	39°32'27.4837"N	80°52'28.4660"W	1081.98	265.262	1.71	1.15	2.57	



Actual Wellpath Report

Tygart Unit 1H AWP Proj: 21803'

Page 4 of 13



REFERENCE WELLPATH IDENTIFICATION

Operator	ANTERO RESOURCES CORPORATION	Well	Tygart Unit 1H
Field	Tyler	API	47-095-02721-0000
Facility	Elk Fork Pad	Wellbore	Tygart Unit 1H AWB
Slot	Slot #01		

WELLPATH DATA (255 stations) † = interpolated, ‡ = extrapolated station

MD [ft]	Inclination [°]	Azimuth [°]	TVD [ft]	Vert Sect [ft]	North [ft]	East [ft]	Grid East [US ft]	Grid North [US ft]	Latitude	Longitude	Closure Dist [ft]	Closure Dir [°]	DLS [°/100ft]	Build Rate [°/100ft]	Turn Rate [°/100ft]	Comments
5298.00	30.240	264.520	5050.23	275.96	-92.35	-1122.29	1675733.37	14358923.50	39°32'27.4549"N	80°52'29.0278"W	1126.08	265.296	1.88	0.33	-3.68	
5387.00	29.690	259.720	5127.34	284.46	-98.43	-1166.29	1675689.39	14358917.43	39°32'27.3955"N	80°52'29.5896"W	1170.44	265.176	2.76	-0.62	-5.39	
5475.00	29.750	261.240	5203.76	291.56	-105.64	-1209.31	1675646.38	14358910.22	39°32'27.3248"N	80°52'30.1388"W	1213.92	265.007	0.86	0.07	1.73	
5564.00	29.070	264.550	5281.30	300.47	-111.06	-1252.67	1675603.05	14358904.80	39°32'27.2718"N	80°52'30.6923"W	1257.58	264.933	1.98	-0.76	3.72	
5652.00	28.030	270.260	5358.61	312.23	-113.00	-1294.63	1675561.09	14358902.87	39°32'27.2533"N	80°52'31.2280"W	1299.56	265.012	3.32	-1.18	6.49	
5741.00	27.490	267.250	5437.37	324.80	-113.89	-1336.07	1675519.68	14358901.98	39°32'27.2450"N	80°52'31.7569"W	1340.91	265.128	1.69	-0.61	-3.38	
5829.00	27.620	262.260	5515.40	334.39	-117.61	-1376.57	1675479.19	14358898.26	39°32'27.2088"N	80°52'32.2739"W	1381.59	265.117	2.63	0.15	-5.67	
5918.00	26.200	267.150	5594.77	340.45	-124.76	-1416.18	1675439.60	14358891.11	39°32'27.1387"N	80°52'32.7796"W	1421.66	264.965	3.05	-1.60	-5.74	
6006.00	25.780	267.880	5673.87	344.75	-133.10	-1453.82	1675401.97	14358882.78	39°32'27.0568"N	80°52'33.2603"W	1459.90	264.769	0.60	-0.48	0.83	
6095.00	25.910	265.560	5753.99	351.88	-138.67	-1492.14	1675363.66	14358877.21	39°32'27.0022"N	80°52'33.7495"W	1498.57	264.691	3.76	0.15	8.63	
6183.00	26.130	263.510	5833.08	360.84	-142.35	-1530.57	1675325.26	14358873.53	39°32'26.9664"N	80°52'34.2400"W	1537.17	264.687	1.05	0.25	-2.33	
6234.00	26.280	260.360	5878.84	365.07	-145.51	-1552.86	1675302.97	14358870.37	39°32'26.9355"N	80°52'34.5246"W	1559.66	264.647	2.74	0.29	-6.18	BH AT Curve <8-1/2"> (6183')(6234'-21778')
6322.00	25.520	273.960	5958.07	375.57	-147.46	-1591.01	1675264.84	14358868.42	39°32'26.9167"N	80°52'35.0116"W	1597.83	264.705	6.79	-0.86	15.45	
6411.00	28.210	295.930	6037.65	397.90	-136.91	-1629.16	1675226.71	14358878.96	39°32'27.0215"N	80°52'35.4983"W	1634.90	265.196	11.49	3.02	24.69	
6499.00	32.550	309.230	6113.64	432.72	-112.81	-1666.26	1675189.62	14358903.06	39°32'27.2602"N	80°52'35.9715"W	1670.07	266.127	9.07	4.93	15.11	
6588.00	37.960	315.510	6186.31	477.79	-78.10	-1704.03	1675151.87	14358937.75	39°32'27.6037"N	80°52'36.4530"W	1705.82	267.376	7.31	6.08	7.06	
6656.00†	42.403	319.155	6238.26	517.94	-45.82	-1733.70	1675122.21	14358970.02	39°32'27.9232"N	80°52'36.8311"W	1734.30	268.486	7.39	6.53	5.36	Sycamore: 6656' MD
6676.00	43.730	320.110	6252.87	530.65	-35.41	-1742.54	1675113.37	14358980.42	39°32'28.0262"N	80°52'36.9438"W	1742.90	268.836	7.39	6.63	4.77	
6765.00	49.020	321.850	6314.25	591.13	14.65	-1783.05	1675072.87	14359030.46	39°32'28.5215"N	80°52'37.4600"W	1783.11	270.471	6.11	5.94	1.96	
6812.00†	52.891	323.267	6343.86	625.73	43.63	-1805.23	1675050.70	14359059.43	39°32'28.8082"N	80°52'37.7426"W	1805.76	271.385	8.56	8.24	3.02	Middlesex: 6812' MD
6853.00	56.280	324.390	6367.61	657.63	70.60	-1824.94	1675031.00	14359086.40	39°32'29.0751"N	80°52'37.9938"W	1826.31	272.216	8.56	8.27	2.74	
6942.00	62.510	326.150	6412.90	731.29	133.55	-1868.53	1674987.43	14359149.31	39°32'29.6977"N	80°52'38.5490"W	1873.29	274.088	7.20	7.00	1.98	
6980.00†	64.893	327.493	6429.74	764.30	162.06	-1887.16	1674968.80	14359177.81	39°32'29.9798"N	80°52'38.7864"W	1894.11	274.908	7.02	6.27	3.53	Burkett: 6980' MD
6986.00	65.270	327.700	6432.27	769.60	166.65	-1890.08	1674965.89	14359182.41	39°32'30.0252"N	80°52'38.8235"W	1897.41	275.039	7.02	6.29	3.45	
7026.00†	67.587	329.421	6448.26	805.38	197.93	-1909.20	1674946.78	14359213.67	39°32'30.3346"N	80°52'39.0670"W	1919.43	275.919	7.01	5.79	4.30	Tully: 7026' MD
7030.00	67.820	329.590	6449.78	809.00	201.12	-1911.07	1674944.90	14359216.86	39°32'30.3662"N	80°52'39.0909"W	1921.63	276.008	7.01	5.82	4.22	
7118.00	73.720	335.130	6478.77	891.06	274.70	-1949.52	1674906.47	14359290.41	39°32'31.0938"N	80°52'39.5804"W	1968.78	278.020	8.96	6.70	6.30	
7150.00†	75.395	336.558	6487.29	921.78	302.84	-1962.14	1674893.85	14359318.54	39°32'31.3721"N	80°52'39.7410"W	1985.37	278.774	6.78	5.24	4.46	Marcellus POE: 7150' MD
7207.00	78.400	339.050	6500.21	977.19	354.23	-1983.10	1674872.90	14359369.91	39°32'31.8804"N	80°52'40.0077"W	2014.49	280.128	6.78	5.27	4.37	
7295.00	86.490	342.940	6511.78	1064.33	436.64	-2011.46	1674844.56	14359452.28	39°32'32.6952"N	80°52'40.3682"W	2058.30	282.247	10.18	9.19	4.42	



Actual Wellpath Report

Tygart Unit 1H AWP Proj: 21803'
Page 5 of 13



REFERENCE WELLPATH IDENTIFICATION			
Operator	ANTERO RESOURCES CORPORATION	Well	Tygart Unit 1H
Field	Tyler	API	47-095-02721-0000
Facility	Elk Fork Pad	Wellbore	Tygart Unit 1H AWB
Slot	Slot #01		

WELLPATH DATA (255 stations)																
MD (ft)	Inclination (°)	Azimuth (°)	TVD (ft)	Vert Sect (ft)	North (ft)	East (ft)	Grid East (US ft)	Grid North (US ft)	Latitude	Longitude	Closure Dist (ft)	Closure Dir (°)	DLS (°/100ft)	Build Rate (°/100ft)	Turn Rate (°/100ft)	Comments
7384.00	88.740	340.140	6515.48	1153.24	520.97	-2039.61	1674816.42	14359536.58	39°32'33.5290"N	80°52'40.7261"W	2105.09	284.328	4.03	2.53	-3.15	
7472.00	88.680	340.480	6517.46	1241.21	603.80	-2069.25	1674786.79	14359619.38	39°32'34.3481"N	80°52'41.1030"W	2155.55	286.267	0.39	-0.07	0.39	
7561.00	90.250	341.720	6518.29	1330.20	688.00	-2098.08	1674757.97	14359703.54	39°32'35.1806"N	80°52'41.4695"W	2208.00	288.155	2.25	1.76	1.39	
7649.00	89.510	341.780	6518.48	1418.19	771.57	-2125.64	1674730.42	14359787.08	39°32'36.0069"N	80°52'41.8198"W	2261.34	289.950	0.84	-0.84	0.07	
7738.00	93.050	341.750	6516.49	1507.15	856.07	-2153.47	1674702.60	14359871.54	39°32'36.8424"N	80°52'42.1737"W	2317.39	291.679	3.98	3.98	-0.03	
7827.00	89.630	338.760	6514.41	1596.09	939.79	-2183.53	1674672.56	14359955.23	39°32'37.6703"N	80°52'42.5559"W	2377.18	293.287	5.10	-3.84	-3.36	
7915.00	90.250	340.490	6514.50	1684.06	1022.28	-2214.16	1674641.93	14360037.69	39°32'38.4859"N	80°52'42.9455"W	2438.77	294.783	2.09	0.70	1.97	
8003.00	89.290	339.320	6514.85	1772.04	1104.92	-2244.40	1674611.71	14360120.30	39°32'39.3031"N	80°52'43.3301"W	2501.63	296.211	1.72	-1.09	-1.33	
8092.00	91.080	342.070	6514.57	1861.02	1188.90	-2273.82	1674582.30	14360204.25	39°32'40.1335"N	80°52'43.7041"W	2565.88	297.604	3.69	2.01	3.09	
8180.00	91.080	338.770	6512.91	1948.99	1271.79	-2303.30	1674552.83	14360287.10	39°32'40.9531"N	80°52'44.0790"W	2631.09	298.906	3.75	0.00	-3.75	
8269.00	88.580	339.740	6513.17	2037.93	1355.01	-2334.82	1674521.32	14360370.29	39°32'41.7760"N	80°52'44.4800"W	2699.53	300.129	3.01	-2.81	1.09	
8357.00	91.050	340.600	6513.46	2125.91	1437.78	-2364.67	1674491.49	14360453.03	39°32'42.5945"N	80°52'44.8596"W	2767.47	301.301	2.97	2.81	0.98	
8446.00	90.090	340.280	6512.57	2214.90	1521.64	-2394.46	1674461.70	14360536.85	39°32'43.4237"N	80°52'45.2385"W	2837.05	302.435	1.14	-1.08	-0.36	
8534.00	90.370	341.510	6512.22	2302.90	1604.79	-2423.27	1674432.91	14360619.97	39°32'44.2459"N	80°52'45.6047"W	2906.47	303.514	1.43	0.32	1.40	
8623.00	90.090	340.810	6511.86	2391.90	1688.02	-2452.01	1674404.19	14360704.17	39°32'45.0787"N	80°52'45.9701"W	2977.44	304.560	0.85	-0.31	-0.79	
8711.00	90.180	340.940	6511.65	2479.90	1772.17	-2480.84	1674375.37	14360787.28	39°32'45.9008"N	80°52'46.3368"W	3048.79	305.540	0.18	0.10	0.15	
8800.00	90.680	338.910	6510.99	2568.87	1855.75	-2511.38	1674344.83	14360870.83	39°32'46.7273"N	80°52'46.7253"W	3122.64	306.462	2.35	0.56	-2.28	
8888.00	90.740	343.090	6509.89	2656.84	1938.93	-2540.03	1674316.20	14360953.98	39°32'47.5498"N	80°52'47.0895"W	3195.50	307.356	4.75	0.07	4.75	
8977.00	90.770	339.210	6508.72	2745.82	2023.14	-2568.77	1674287.47	14361038.15	39°32'48.3824"N	80°52'47.4550"W	3269.81	308.224	4.36	0.03	-4.36	
9065.00	88.740	341.370	6509.10	2833.80	2105.97	-2598.45	1674257.80	14361120.95	39°32'49.2015"N	80°52'47.8324"W	3344.70	309.024	3.37	-2.31	2.45	
9154.00	91.140	341.540	6509.19	2922.79	2190.34	-2626.75	1674229.51	14361205.29	39°32'50.0357"N	80°52'48.1923"W	3420.15	309.823	2.70	2.70	0.19	
9242.00	88.770	339.700	6509.26	3010.78	2273.35	-2655.95	1674200.32	14361288.26	39°32'50.8564"N	80°52'48.5636"W	3496.02	310.562	3.41	-2.69	-2.09	
9331.00	90.620	340.780	6509.73	3099.76	2357.10	-2686.04	1674170.25	14361371.98	39°32'51.6846"N	80°52'48.9462"W	3573.61	311.268	2.41	2.08	1.21	
9419.00	89.880	341.380	6509.35	3187.76	2440.34	-2714.57	1674141.73	14361455.19	39°32'52.5077"N	80°52'49.3091"W	3650.23	311.955	1.08	-0.84	0.68	
9508.00	91.230	340.880	6508.49	3276.75	2524.55	-2743.35	1674112.96	14361539.36	39°32'53.3403"N	80°52'49.6751"W	3728.18	312.622	1.62	1.52	-0.56	
9596.00	90.340	340.950	6507.28	3364.74	2607.71	-2772.12	1674084.20	14361622.48	39°32'54.1626"N	80°52'50.0409"W	3805.89	313.250	1.01	-1.01	0.08	
9685.00	91.230	341.100	6506.06	3453.73	2691.86	-2801.06	1674055.27	14361706.61	39°32'54.9947"N	80°52'50.4089"W	3884.85	313.861	1.01	1.00	0.17	
9773.00	90.650	340.440	6504.62	3541.72	2774.94	-2830.04	1674026.30	14361789.65	39°32'55.8161"N	80°52'50.7774"W	3963.51	314.437	1.00	-0.66	-0.75	
9862.00	90.650	338.550	6503.61	3630.68	2858.29	-2861.21	1673995.14	14361872.97	39°32'56.6403"N	80°52'51.1739"W	4044.30	314.971	2.12	0.00	-2.12	
9950.00	90.680	338.320	6502.59	3718.57	2940.13	-2893.55	1673962.81	14361954.77	39°32'57.4495"N	80°52'51.5854"W	4125.17	315.457	0.26	0.03	-0.26	



Actual Wellpath Report

Tygart Unit 1H AWP Proj: 21803'

Page 6 of 13



REFERENCE WELLPATH IDENTIFICATION

Operator	ANTERO RESOURCES CORPORATION	Well	Tygart Unit 1H
Field	Tyler	API	47-095-02721-0000
Facility	Elk Fork Pad	Wellbore	Tygart Unit 1H AWB
Slot	Slot #01		

WELLPATH DATA (255 stations)

MD [ft]	Inclination [°]	Azimuth [°]	TVD [ft]	Vert Sect [ft]	North [ft]	East [ft]	Grid East [US ft]	Grid North [US ft]	Latitude	Longitude	Closure Dist [ft]	Closure Dir [°]	DLS [°/100ft]	Build Rate [°/100ft]	Turn Rate [°/100ft]	Comments
10038.00	90.580	341.290	6501.62	3806.54	3022.70	-2923.93	1673932.45	14362037.31	39°32'58.2661"N	80°52'51.9718"W	4205.48	315.952	3.38	-0.11	3.38	
10127.00	90.740	346.410	6500.59	3895.40	3108.16	-2948.67	1673907.72	14362122.73	39°32'59.1109"N	80°52'52.2863"W	4284.31	316.508	5.76	0.18	5.75	
10215.00	90.370	347.890	6499.74	3982.90	3193.95	-2968.24	1673888.16	14362208.49	39°32'59.9591"N	80°52'52.5346"W	4360.25	317.098	1.73	-0.42	1.68	
10304.00	90.620	349.910	6498.97	4071.07	3281.27	-2985.38	1673871.03	14362295.78	39°33'0.8224"N	80°52'52.7519"W	4436.13	317.703	2.29	0.28	2.27	
10392.00	90.890	344.080	6497.81	4158.56	3366.97	-3005.17	1673851.24	14362381.44	39°33'1.6696"N	80°52'53.0031"W	4513.04	318.250	6.63	0.31	-6.63	
10481.00	90.250	339.290	6496.93	4247.53	3451.44	-3033.13	1673823.30	14362465.87	39°33'2.5047"N	80°52'53.3586"W	4594.81	318.691	5.43	-0.72	-5.38	
10569.00	90.150	339.710	6496.62	4335.49	3533.86	-3063.94	1673792.49	14362548.27	39°33'3.3198"N	80°52'53.7506"W	4677.17	319.074	0.49	-0.11	0.48	
10657.00	90.150	338.750	6496.39	4423.44	3616.14	-3095.15	1673761.30	14362630.51	39°33'4.1334"N	80°52'54.1476"W	4759.88	319.439	1.09	0.00	-1.09	
10746.00	90.120	339.340	6496.18	4512.39	3699.25	-3126.98	1673729.48	14362713.59	39°33'4.9552"N	80°52'54.5526"W	4843.81	319.792	0.66	-0.03	0.66	
10834.00	90.370	341.090	6495.80	4600.37	3782.06	-3156.77	1673699.71	14362796.36	39°33'5.7740"N	80°52'54.9314"W	4926.37	320.149	2.01	0.28	1.99	
10923.00	90.430	340.110	6495.18	4689.36	3866.00	-3186.33	1673670.16	14362880.27	39°33'6.6040"N	80°52'55.3074"W	5009.85	320.505	1.10	0.07	-1.10	
11011.00	90.280	339.640	6494.64	4777.34	3948.82	-3216.60	1673639.89	14362962.86	39°33'7.4210"N	80°52'55.6928"W	5092.95	320.833	0.56	-0.17	-0.53	
11100.00	90.220	340.960	6494.25	4866.33	4032.41	-3246.60	1673609.91	14363046.62	39°33'8.2495"N	80°52'56.0742"W	5176.95	321.162	1.48	-0.07	1.48	
11188.00	90.250	340.460	6493.89	4954.33	4115.47	-3275.68	1673580.85	14363129.64	39°33'9.0707"N	80°52'56.4439"W	5259.96	321.482	0.57	0.03	-0.57	
11277.00	90.120	341.820	6493.60	5043.32	4199.69	-3304.44	1673552.09	14363213.83	39°33'9.9035"N	80°52'56.8098"W	5343.85	321.803	1.54	-0.15	1.53	
11365.00	90.430	341.340	6493.18	5131.32	4283.18	-3332.25	1673524.29	14363297.29	39°33'10.7290"N	80°52'57.1634"W	5426.74	322.118	0.65	0.35	-0.55	
11453.00	90.490	341.820	6492.47	5219.31	4366.67	-3360.06	1673496.50	14363380.74	39°33'11.5545"N	80°52'57.5169"W	5509.79	322.423	0.55	0.07	0.55	
11542.00	90.550	342.080	6491.66	5308.30	4451.29	-3387.63	1673468.94	14363465.32	39°33'12.3911"N	80°52'57.8676"W	5593.75	322.727	0.30	0.07	0.29	
11630.00	90.090	340.210	6491.17	5396.30	4534.56	-3416.07	1673440.51	14363548.56	39°33'13.2145"N	80°52'58.2292"W	5677.30	323.008	2.19	-0.52	-2.13	
11719.00	90.550	342.770	6490.67	5485.28	4618.95	-3444.32	1673412.27	14363632.92	39°33'14.0489"N	80°52'58.5885"W	5761.77	323.288	2.92	0.52	2.88	
11807.00	90.340	342.580	6489.99	5573.25	4702.95	-3470.53	1673386.07	14363716.89	39°33'14.8795"N	80°52'58.9217"W	5844.85	323.575	0.32	-0.24	-0.22	
11895.00	90.090	341.590	6489.66	5661.23	4786.68	-3497.59	1673359.02	14363800.59	39°33'15.7073"N	80°52'59.2659"W	5928.36	323.845	1.16	-0.28	-1.13	
11984.00	90.710	342.650	6489.04	5750.22	4871.38	-3524.92	1673331.70	14363885.25	39°33'16.5448"N	80°52'59.6133"W	6012.94	324.111	1.38	0.70	1.19	
12072.00	90.090	341.640	6488.42	5838.20	4955.14	-3551.90	1673304.73	14363968.97	39°33'17.3729"N	80°52'59.9564"W	6096.67	324.367	1.35	-0.70	-1.15	
12161.00	90.520	342.670	6487.95	5927.18	5039.85	-3579.17	1673277.47	14364053.66	39°33'18.2106"N	80°53'0.3031"W	6181.47	324.619	1.25	0.48	1.16	
12249.00	90.520	342.610	6487.15	6015.15	5123.84	-3605.43	1673251.23	14364137.61	39°33'19.0410"N	80°53'0.6370"W	6265.21	324.868	0.07	0.00	-0.07	
12338.00	90.370	343.760	6486.46	6104.08	5209.03	-3631.17	1673225.49	14364222.77	39°33'19.8833"N	80°53'0.9642"W	6349.76	325.120	1.30	-0.17	1.29	
12426.00	90.550	346.770	6485.75	6191.84	5294.13	-3653.55	1673203.12	14364307.83	39°33'20.7245"N	80°53'1.2485"W	6432.43	325.390	3.43	0.20	3.42	
12514.00	90.060	345.790	6485.29	6279.48	5379.61	-3674.42	1673182.26	14364393.28	39°33'21.5697"N	80°53'1.5136"W	6514.72	325.666	1.25	-0.56	-1.11	
12603.00	90.550	341.360	6484.81	6368.37	5464.96	-3699.58	1673157.11	14364478.59	39°33'22.4135"N	80°53'1.8334"W	6599.44	325.903	5.01	0.55	-4.98	



Actual Wellpath Report

Tygart Unit 1H AWP Proj: 21803'
Page 7 of 13



REFERENCE WELLPATH IDENTIFICATION			
Operator	ANTERO RESOURCES CORPORATION	Well	Tygart Unit 1H
Field	Tyler	API	47-095-02721-0000
Facility	Elk Fork Pad	Wellbore	Tygart Unit 1H AWB
Slot	Slot #01		

WELLPATH DATA (255 stations)																
MD	Inclination	Azimuth	TVD	Vert Sect	North	East	Grid East	Grid North	Latitude	Longitude	Closure Dist	Closure Dir	DLS	Build Rate	Turn Rate	Comments
(ft)	(°)	(°)	(ft)	(ft)	(ft)	(ft)	(US ft)	(US ft)			(ft)	(°)	("/100ft)	("/100ft)	("/100ft)	
12691.00	89.750	341.510	6484.58	6456.37	5548.38	-3727.60	1673129.10	14364561.97	39°33'23.2383"N	80°53'2.1897"W	6684.27	326.105	0.92	-0.91	0.17	
12780.00	89.910	340.140	6484.85	6545.37	5632.44	-3756.83	1673099.88	14364646.00	39°33'24.0695"N	80°53'2.5615"W	6770.39	326.297	1.55	0.18	-1.54	
12868.00	89.540	341.010	6485.27	6633.36	5715.43	-3786.10	1673070.63	14364728.96	39°33'24.8901"N	80°53'2.9338"W	6855.70	326.478	1.07	-0.42	0.99	
12957.00	93.110	340.430	6483.21	6722.32	5799.40	-3815.47	1673041.27	14364812.90	39°33'25.7203"N	80°53'3.3074"W	6941.96	326.659	4.06	4.01	-0.65	
13045.00	90.650	334.350	6480.32	6810.04	5880.55	-3849.27	1673007.48	14364894.01	39°33'26.5228"N	80°53'3.7376"W	7028.35	326.792	7.45	-2.80	-6.91	
13134.00	91.970	336.470	6478.29	6898.57	5961.45	-3886.29	1672970.48	14364974.88	39°33'27.3228"N	80°53'4.2090"W	7116.33	326.900	2.81	1.48	2.38	
13222.00	92.590	339.270	6474.78	6986.35	6042.89	-3919.41	1672937.37	14365056.29	39°33'28.1282"N	80°53'4.6305"W	7202.66	327.033	3.26	0.70	3.18	
13310.00	92.680	340.310	6470.74	7074.23	6125.38	-3949.78	1672907.01	14365138.75	39°33'28.9438"N	80°53'5.0169"W	7288.42	327.185	1.18	0.10	1.18	
13399.00	92.310	339.950	6466.86	7163.13	6209.01	-3980.00	1672878.80	14365222.34	39°33'29.7707"N	80°53'5.4013"W	7375.10	327.340	0.58	-0.42	-0.40	
13487.00	93.660	342.720	6462.28	7251.00	6292.25	-4008.12	1672848.69	14365305.55	39°33'30.5938"N	80°53'5.7590"W	7460.40	327.503	3.50	1.53	3.15	
13576.00	93.970	340.340	6456.36	7339.80	6376.48	-4036.25	1672820.57	14365389.74	39°33'31.4266"N	80°53'6.1168"W	7546.57	327.667	2.69	0.35	-2.67	
13664.00	91.630	339.910	6452.06	7427.67	6459.13	-4066.13	1672790.70	14365472.36	39°33'32.2438"N	80°53'6.4970"W	7632.42	327.809	2.70	-2.66	-0.49	
13753.00	92.220	340.260	6449.07	7516.61	6542.76	-4096.43	1672760.42	14365555.96	39°33'33.0707"N	80°53'6.8824"W	7719.36	327.949	0.77	0.66	0.39	
13841.00	90.580	340.010	6446.92	7604.57	6625.50	-4126.33	1672730.54	14365638.66	39°33'33.8888"N	80°53'7.2628"W	7805.37	328.086	1.89	-1.86	-0.28	
13930.00	90.120	340.410	6446.38	7693.55	6709.24	-4156.46	1672700.42	14365722.37	39°33'34.7168"N	80°53'7.6461"W	7892.40	328.221	0.68	-0.52	0.45	
14018.00	89.110	340.340	6446.97	7781.54	6792.12	-4186.01	1672670.87	14365805.22	39°33'35.5364"N	80°53'8.0221"W	7978.45	328.354	1.15	-1.15	-0.08	
14106.00	89.290	340.350	6448.20	7869.53	6874.99	-4215.61	1672641.29	14365888.05	39°33'36.3557"N	80°53'8.3986"W	8064.54	328.484	0.20	0.20	0.01	
14195.00	89.200	340.340	6449.37	7958.51	6958.79	-4245.54	1672611.37	14365971.83	39°33'37.1844"N	80°53'8.7795"W	8151.65	328.613	0.10	-0.10	-0.01	
14283.00	88.400	340.360	6451.21	8046.48	7041.65	-4275.13	1672581.79	14366054.65	39°33'38.0036"N	80°53'9.1559"W	8237.81	328.737	0.91	-0.91	0.02	
14372.00	88.550	340.160	6453.58	8135.44	7125.39	-4305.18	1672551.76	14366138.36	39°33'38.8316"N	80°53'9.5382"W	8325.01	328.860	0.28	0.17	-0.22	
14460.00	89.510	340.300	6455.07	8223.42	7208.19	-4334.94	1672522.01	14366221.12	39°33'39.6504"N	80°53'9.9168"W	8411.28	328.978	1.10	1.09	0.16	
14548.00	89.320	340.220	6455.97	8311.40	7291.02	-4364.66	1672492.30	14366303.92	39°33'40.4693"N	80°53'10.2950"W	8497.60	329.094	0.23	-0.22	-0.09	
14637.00	90.400	340.480	6456.19	8400.39	7374.83	-4394.59	1672462.38	14366387.70	39°33'41.2980"N	80°53'10.6757"W	8584.90	329.210	1.25	1.21	0.29	
14725.00	90.310	340.500	6455.64	8488.39	7457.78	-4423.98	1672433.01	14366470.61	39°33'42.1182"N	80°53'11.0496"W	8671.22	329.323	0.10	-0.10	0.02	
14814.00	89.750	340.140	6455.59	8577.38	7541.58	-4453.95	1672403.05	14366554.38	39°33'42.9468"N	80°53'11.4310"W	8758.60	329.435	0.75	-0.63	-0.40	
14902.00	90.180	341.780	6455.65	8665.37	7624.76	-4482.65	1672374.35	14366637.53	39°33'43.7693"N	80°53'11.7961"W	8844.84	329.548	1.93	0.49	1.86	
14991.00	90.030	341.640	6455.49	8754.37	7709.26	-4510.58	1672346.43	14366722.00	39°33'44.6048"N	80°53'12.1514"W	8931.86	329.669	0.23	-0.17	-0.16	
15079.00	89.880	340.990	6455.55	8842.37	7792.62	-4538.78	1672318.25	14366805.32	39°33'45.4290"N	80°53'12.5100"W	9018.06	329.782	0.76	-0.17	-0.74	
15168.00	90.090	340.840	6455.58	8931.37	7876.73	-4567.88	1672289.16	14366889.40	39°33'46.2606"N	80°53'12.8802"W	9105.41	329.890	0.29	0.24	-0.17	
15256.00	90.920	341.820	6454.80	9019.36	7960.10	-4596.05	1672261.01	14366972.73	39°33'47.0849"N	80°53'13.2386"W	9191.67	329.998	1.46	0.94	1.11	



Actual Wellpath Report

Tygart Unit 1H AWP Proj: 21803'

Page 8 of 13



REFERENCE WELLPATH IDENTIFICATION

Operator	ANTERO RESOURCES CORPORATION	Well	Tygart Unit 1H
Field	Tyler	API	47-095-02721-0000
Facility	Elk Fork Pad	Wellbore	Tygart Unit 1H AWB
Slot	Slot #01		

WELLPATH DATA (255 stations)

MD (ft)	Inclination [°]	Azimuth [°]	TVD (ft)	Vert Sect (ft)	North (ft)	East (ft)	Grid East (US ft)	Grid North (US ft)	Latitude	Longitude	Closure Dist (ft)	Closure Dir [°]	DLS [°/100ft]	Build Rate [°/100ft]	Turn Rate [°/100ft]	Comments
15345.00	90.460	341.480	6453.73	9108.35	8044.56	-4624.06	1672233.00	14367057.16	39°33'47.9201"N	80°53'13.5949"W	9278.85	330.109	0.64	-0.52	-0.38	
15433.00	89.660	339.550	6453.64	9196.34	8127.52	-4653.41	1672203.66	14367140.09	39°33'48.7403"N	80°53'13.9684"W	9365.41	330.207	2.37	-0.91	-2.19	
15521.00	89.750	343.210	6454.09	9284.32	8210.90	-4681.51	1672175.58	14367223.43	39°33'49.5647"N	80°53'14.3257"W	9451.74	330.310	4.16	0.10	4.16	
15610.00	90.030	339.060	6454.26	9373.30	8295.10	-4710.28	1672146.82	14367307.60	39°33'50.3972"N	80°53'14.6918"W	9539.15	330.410	4.67	0.31	-4.66	
15698.00	90.770	342.740	6453.65	9461.29	8378.24	-4739.07	1672118.04	14367390.70	39°33'51.2192"N	80°53'15.0580"W	9625.68	330.506	4.27	0.84	4.18	
15787.00	90.860	341.850	6452.38	9550.26	8463.01	-4766.13	1672090.99	14367475.44	39°33'52.0574"N	80°53'15.4022"W	9712.81	330.613	1.00	0.10	-1.00	
15875.00	90.860	343.180	6451.06	9638.22	8546.94	-4792.57	1672064.56	14367559.33	39°33'52.8872"N	80°53'15.7385"W	9798.92	330.719	1.51	0.00	1.51	
15964.00	90.220	342.090	6450.22	9727.18	8631.87	-4819.13	1672038.01	14367644.24	39°33'53.7270"N	80°53'16.0762"W	9886.01	330.826	1.42	-0.72	-1.22	
16052.00	90.150	339.630	6449.94	9815.17	8715.00	-4847.98	1672009.17	14367727.33	39°33'54.5489"N	80°53'16.4433"W	9972.67	330.914	2.80	-0.08	-2.80	
16141.00	90.860	342.050	6449.15	9904.16	8799.06	-4877.19	1671979.98	14367811.36	39°33'55.3801"N	80°53'16.8149"W	10060.34	331.001	2.83	0.80	2.72	
16229.00	90.860	342.910	6447.83	9992.13	8882.97	-4903.67	1671953.50	14367895.23	39°33'56.2097"N	80°53'17.1518"W	10146.58	331.100	0.98	0.00	0.98	
16317.00	90.250	340.900	6446.98	10080.11	8966.61	-4931.00	1671926.18	14367978.84	39°33'57.0366"N	80°53'17.4994"W	10233.03	331.192	2.39	-0.69	-2.28	
16406.00	91.020	341.570	6445.99	10169.10	9050.87	-4959.63	1671897.56	14368063.07	39°33'57.8698"N	80°53'17.8636"W	10320.67	331.278	1.15	0.87	0.75	
16494.00	90.520	341.450	6444.81	10257.09	9134.32	-4987.54	1671869.67	14368146.48	39°33'58.6949"N	80°53'18.2186"W	10407.27	331.365	0.58	-0.57	-0.14	
16583.00	90.340	341.570	6444.14	10346.09	9218.72	-5015.76	1671841.46	14368230.85	39°33'59.5294"N	80°53'18.5777"W	10494.89	331.450	0.24	-0.20	0.13	
16671.00	90.710	340.560	6443.34	10434.08	9301.96	-5044.32	1671812.91	14368314.05	39°34'0.3524"N	80°53'18.9410"W	10581.66	331.530	1.22	0.42	-1.15	
16760.00	91.110	341.640	6441.92	10523.07	9386.15	-5073.14	1671784.10	14368398.21	39°34'1.1848"N	80°53'19.3077"W	10669.42	331.609	1.29	0.45	1.21	
16848.00	90.890	341.830	6440.39	10611.05	9469.70	-5100.72	1671756.54	14368481.73	39°34'2.0109"N	80°53'19.6585"W	10756.05	331.692	0.33	-0.25	0.22	
16937.00	90.680	343.670	6439.17	10700.00	9554.89	-5127.10	1671730.16	14368566.68	39°34'2.8511"N	80°53'19.9941"W	10843.40	331.782	2.08	-0.24	2.07	
17025.00	90.280	340.810	6438.43	10787.97	9638.48	-5153.94	1671703.33	14368650.44	39°34'3.6796"N	80°53'20.3355"W	10929.93	331.865	3.28	-0.45	-3.25	
17114.00	90.770	342.380	6437.62	10876.96	9722.92	-5182.04	1671675.24	14368734.85	39°34'4.5145"N	80°53'20.6930"W	11017.66	331.944	1.85	0.55	1.76	
17202.00	90.460	341.010	6436.67	10964.95	9806.46	-5209.68	1671647.62	14368818.35	39°34'5.3405"N	80°53'21.0446"W	11104.39	332.021	1.60	-0.35	-1.56	
17291.00	91.480	341.490	6435.16	11053.94	9890.73	-5238.28	1671619.03	14368902.58	39°34'6.1736"N	80°53'21.4085"W	11192.23	332.094	1.27	1.15	0.54	
17379.00	90.680	339.850	6433.51	11141.91	9973.75	-5267.40	1671589.92	14368985.57	39°34'6.9945"N	80°53'21.7791"W	11279.24	332.160	2.07	-0.91	-1.86	
17468.00	90.060	340.500	6432.93	11230.90	10057.47	-5297.59	1671559.74	14369069.26	39°34'7.8223"N	80°53'22.1632"W	11367.37	332.223	1.01	-0.70	0.73	
17556.00	90.800	342.190	6432.27	11318.89	10140.84	-5325.73	1671531.61	14369152.60	39°34'8.6466"N	80°53'22.5213"W	11454.26	332.293	2.10	0.84	1.92	
17645.00	90.890	342.030	6430.96	11407.87	10225.53	-5353.07	1671504.28	14369237.25	39°34'9.4840"N	80°53'22.8690"W	11541.96	332.368	0.21	0.10	-0.18	
17733.00	89.750	341.890	6430.47	11495.86	10309.20	-5380.32	1671477.04	14369320.89	39°34'10.3112"N	80°53'23.2157"W	11628.73	332.440	1.31	-1.30	-0.16	
17822.00	90.340	340.210	6430.40	11584.85	10393.37	-5409.22	1671448.15	14369405.03	39°34'11.1435"N	80°53'23.5834"W	11716.73	332.505	2.00	0.66	-1.89	
17910.00	89.110	342.500	6430.82	11672.84	10476.74	-5437.35	1671420.03	14369488.37	39°34'11.9678"N	80°53'23.9413"W	11803.69	332.571	2.95	-1.40	2.60	



Actual Wellpath Report

Tygart Unit 1H AWP Proj: 21803'
Page 9 of 13



REFERENCE WELLPATH IDENTIFICATION			
Operator	ANTERO RESOURCES CORPORATION	Well	Tygart Unit 1H
Field	Tyler	API	47-095-02721-0000
Facility	Elk Fork Pad	Wellbore	Tygart Unit 1H AWB
Slot	Slot #01		

WELLPATH DATA (255 stations)																
MD (ft)	Inclination (°)	Azimuth (°)	TVD (ft)	Vert Sect (ft)	North (ft)	East (ft)	Grid East (US ft)	Grid North (US ft)	Latitude	Longitude	Closure Dist (ft)	Closure Dir (°)	DLS (°/100ft)	Build Rate (°/100ft)	Turn Rate (°/100ft)	Comments
17999.00	90.520	341.650	6431.11	11761.83	10561.42	-5464.74	1671392.65	14369573.01	39°34'12.8050"N	80°53'24.2898"W	11891.47	332.642	1.85	1.58	-0.96	
18087.00	90.430	340.940	6430.38	11849.82	10644.77	-5492.96	1671364.44	14369656.33	39°34'13.6291"N	80°53'24.6488"W	11978.47	332.705	0.81	-0.10	-0.81	
18176.00	90.770	341.020	6429.44	11938.82	10728.91	-5521.97	1671335.45	14369740.43	39°34'14.4610"N	80°53'25.0179"W	12066.55	332.766	0.39	0.38	0.09	
18264.00	91.420	341.660	6427.76	12026.80	10812.26	-5550.12	1671307.31	14369823.75	39°34'15.2852"N	80°53'25.3761"W	12153.55	332.828	1.04	0.74	0.73	
18352.00	90.250	342.030	6426.48	12114.78	10895.87	-5577.53	1671279.91	14369907.33	39°34'16.1119"N	80°53'25.7249"W	12240.46	332.892	1.39	-1.33	0.42	
18441.00	89.540	340.890	6426.64	12203.78	10980.25	-5605.83	1671251.62	14369991.67	39°34'16.9461"N	80°53'26.0849"W	12328.47	332.954	1.51	-0.80	-1.28	
18530.00	89.480	340.370	6427.40	12292.77	11064.21	-5635.35	1671222.12	14370075.60	39°34'17.7763"N	80°53'26.4605"W	12416.68	333.009	0.59	-0.07	-0.58	
18618.00	89.880	341.100	6427.90	12380.77	11147.28	-5664.38	1671193.09	14370158.64	39°34'18.5976"N	80°53'26.8300"W	12503.88	333.063	0.95	0.45	0.83	
18707.00	90.710	341.640	6427.44	12469.76	11231.62	-5692.82	1671164.67	14370242.94	39°34'19.4315"N	80°53'27.1918"W	12591.95	333.122	1.11	0.93	0.61	
18795.00	90.220	341.850	6426.72	12557.75	11315.18	-5720.38	1671137.12	14370326.47	39°34'20.2577"N	80°53'27.5425"W	12678.96	333.181	0.61	-0.56	0.24	
18884.00	90.060	341.250	6426.51	12646.75	11399.61	-5748.55	1671108.97	14370410.86	39°34'21.0925"N	80°53'27.9008"W	12767.02	333.239	0.70	-0.18	-0.67	
18972.00	90.460	341.180	6426.11	12734.75	11482.92	-5776.88	1671080.64	14370494.14	39°34'21.9162"N	80°53'28.2614"W	12854.18	333.294	0.46	0.45	-0.08	
19061.00	89.880	339.820	6425.84	12823.74	11566.81	-5806.59	1671050.94	14370578.00	39°34'22.7457"N	80°53'28.6395"W	12942.47	333.343	1.66	-0.65	-1.53	
19149.00	90.280	344.540	6425.72	12911.70	11650.57	-5833.51	1671024.03	14370661.72	39°34'23.5737"N	80°53'28.9820"W	13029.41	333.403	5.38	0.45	5.36	
19237.00	89.750	340.140	6425.70	12999.66	11734.40	-5860.20	1670997.35	14370745.52	39°34'24.4026"N	80°53'29.3216"W	13116.33	333.462	5.04	-0.60	-5.00	
19326.00	88.770	341.800	6426.85	13088.65	11818.52	-5889.22	1670968.35	14370829.61	39°34'25.2344"N	80°53'29.6908"W	13204.56	333.513	2.17	-1.10	1.87	
19414.00	90.920	340.450	6427.08	13176.64	11901.78	-5917.69	1670939.89	14370912.84	39°34'26.0576"N	80°53'30.0530"W	13291.78	333.563	2.88	2.44	-1.53	
19503.00	89.720	342.110	6426.59	13265.63	11986.07	-5946.25	1670911.34	14370997.09	39°34'26.8909"N	80°53'30.4165"W	13379.97	333.614	2.30	-1.35	1.87	
19591.00	89.320	343.000	6427.32	13353.60	12070.02	-5972.63	1670884.97	14371081.00	39°34'27.7209"N	80°53'30.7521"W	13466.91	333.672	1.11	-0.45	1.01	
19680.00	90.520	339.850	6427.45	13442.59	12154.37	-6000.97	1670856.64	14371165.32	39°34'28.5549"N	80°53'31.1128"W	13555.09	333.723	3.79	1.35	-3.54	
19768.00	88.830	342.080	6427.95	13530.58	12237.55	-6029.67	1670827.95	14371248.47	39°34'29.3774"N	80°53'31.4780"W	13642.38	333.770	3.18	-1.92	2.53	
19857.00	90.650	343.970	6428.35	13619.52	12322.66	-6055.65	1670801.98	14371333.55	39°34'30.2189"N	80°53'31.8085"W	13730.22	333.829	2.95	2.04	2.12	
19945.00	88.150	341.660	6429.27	13707.46	12406.72	-6081.65	1670776.00	14371417.57	39°34'31.0499"N	80°53'32.1392"W	13817.13	333.886	3.87	-2.84	-2.63	
20034.00	88.280	341.850	6432.05	13796.41	12491.20	-6109.50	1670748.16	14371502.02	39°34'31.8852"N	80°53'32.4935"W	13905.25	333.937	0.26	0.15	0.21	
20122.00	88.250	341.040	6434.71	13884.37	12574.59	-6137.49	1670720.18	14371585.37	39°34'32.7097"N	80°53'32.8497"W	13992.46	333.984	0.92	-0.03	-0.92	
20211.00	90.400	342.300	6435.76	13973.35	12659.06	-6165.47	1670692.21	14371669.81	39°34'33.5449"N	80°53'33.2058"W	14080.66	334.032	2.80	2.42	1.42	
20300.00	90.120	341.770	6435.35	14062.34	12743.72	-6192.92	1670664.77	14371754.44	39°34'34.3819"N	80°53'33.5551"W	14168.79	334.082	0.67	-0.31	-0.60	
20388.00	90.120	341.380	6435.17	14150.34	12827.21	-6220.74	1670636.96	14371837.89	39°34'35.2074"N	80°53'33.9090"W	14256.05	334.128	0.44	0.00	-0.44	
20476.00	90.180	340.870	6434.94	14238.34	12910.48	-6249.21	1670608.51	14371921.13	39°34'36.0306"N	80°53'34.2713"W	14343.39	334.171	0.58	0.07	-0.58	
20565.00	90.580	341.900	6434.35	14327.33	12994.82	-6277.61	1670580.11	14372005.43	39°34'36.8645"N	80°53'34.6322"W	14431.89	334.215	1.24	0.45	1.16	



Actual Wellpath Report

Tygart Unit 1H AWP Proj: 21803'
Page 10 of 13



REFERENCE WELLPATH IDENTIFICATION			
Operator	ANTERO RESOURCES CORPORATION	Well	Tygart Unit 1H
Field	Tyler	API	47-095-02721-0000
Facility	Elk Fork Pad	Wellbore	Tygart Unit 1H AWB
Slot	Slot #01		

WELLPATH DATA (255 stations) † = interpolated, ‡ = extrapolated station																	
MD	Inclination	Azimuth	TVD	Vert Sect	North	East	Grid East	Grid North	Latitude	Longitude	Closure Dist	Closure Dir	DLS	Build Rate	Turn Rate	Comments	
(ft)	(°)	(°)	(ft)	(ft)	(ft)	(ft)	(US ft)	(US ft)			(ft)	(°)	("/100ft)	("/100ft)	("/100ft)		
20653.00	88.890	341.750	6434.76	14415.32	13078.42	-6305.06	1670552.67	14372089.00	39°34'37.6912"N	80°53'34.9821"W	14518.92	334.261	1.93	-1.92	-0.17		
20742.00	89.380	340.860	6436.10	14504.31	13162.72	-6333.59	1670524.16	14372173.26	39°34'38.5246"N	80°53'35.3451"W	14607.24	334.304	1.14	0.55	-1.00		
20830.00	88.980	341.570	6437.36	14592.30	13246.02	-6361.92	1670495.84	14372256.53	39°34'39.3482"N	80°53'35.7057"W	14694.59	334.346	0.93	-0.45	0.81		
20919.00	89.110	340.460	6438.84	14681.29	13330.16	-6390.87	1670466.90	14372340.65	39°34'40.1802"N	80°53'36.0741"W	14782.98	334.386	1.26	0.15	-1.25		
21007.00	89.510	342.010	6439.90	14769.28	13413.48	-6419.17	1670438.61	14372423.93	39°34'41.0039"N	80°53'36.4343"W	14870.35	334.426	1.82	0.45	1.76		
21096.00	89.850	341.370	6440.40	14858.27	13497.97	-6447.13	1670410.66	14372508.38	39°34'41.8393"N	80°53'36.7901"W	14958.63	334.469	0.81	0.38	-0.72		
21184.00	89.600	341.330	6440.82	14946.27	13581.35	-6475.27	1670382.53	14372591.73	39°34'42.6637"N	80°53'37.1482"W	15046.00	334.509	0.29	-0.28	-0.05		
21272.00	89.420	340.610	6441.57	15034.26	13664.54	-6503.97	1670353.85	14372674.88	39°34'43.4862"N	80°53'37.5134"W	15133.44	334.547	0.84	-0.20	-0.82		
21361.00	89.720	341.150	6442.24	15123.26	13748.62	-6533.12	1670324.71	14372758.94	39°34'44.3176"N	80°53'37.8844"W	15221.90	334.584	0.69	0.34	0.61		
21449.00	89.420	341.030	6442.90	15211.26	13831.87	-6561.64	1670296.20	14372842.15	39°34'45.1407"N	80°53'38.2474"W	15309.33	334.621	0.37	-0.34	-0.14		
21538.00	89.420	340.810	6443.80	15300.25	13915.98	-6590.73	1670267.12	14372926.22	39°34'45.9722"N	80°53'38.6177"W	15397.80	334.657	0.25	0.00	-0.25		
21626.00	89.420	340.830	6444.70	15388.25	13999.09	-6619.64	1670238.22	14373009.30	39°34'46.7940"N	80°53'38.9856"W	15485.29	334.692	0.02	0.00	0.02		
21714.00	90.120	341.020	6445.05	15476.24	14082.25	-6648.40	1670209.48	14373092.44	39°34'47.6163"N	80°53'39.3517"W	15572.77	334.727	0.82	0.80	0.22		
21778.00	89.750	342.000	6445.12	15540.24	14142.95	-6668.69	1670189.19	14373153.11	39°34'48.2164"N	80°53'39.6100"W	15636.32	334.755	1.64	-0.58	1.53		
21803.00	89.750	342.000	6445.23	15565.24	14166.73	-6676.42	1670181.47	14373176.87	39°34'48.4514"N	80°53'39.7083"W	15661.12	334.767	0.00	0.00	0.00	Projected MD at TD: 21803'	



Actual Wellpath Report

Tygart Unit 1H AWP Proj: 21803'
Page 11 of 13



REFERENCE WELLPATH IDENTIFICATION			
Operator	ANTERO RESOURCES CORPORATION	Well	Tygart Unit 1H
Field	Tyler	API	47-095-02721-0000
Facility	Elk Fork Pad	Wellbore	Tygart Unit 1H AWB
Slot	Slot #01		

HOLE & CASING SECTIONS - Ref Wellbore: Tygart Unit 1H AWB Ref Wellpath: Tygart Unit 1H AWP Proj: 21803'										
String/Diameter	Start MD [ft]	End MD [ft]	Interval [ft]	Start TVD [ft]	End TVD [ft]	Start N/S [ft]	Start E/W [ft]	End N/S [ft]	End E/W [ft]	
20in Conductor	25.50	105.50	80.00	25.50	105.50	0.00	0.00	-0.11	-0.15	
17.5in Open Hole	105.50	390.00	284.50	105.50	390.00	-0.11	-0.15	-0.77	-0.26	
13.375in Casing Surface	25.50	368.20	342.70	25.50	368.20	0.00	0.00	-0.76	-0.25	
12.25in Open Hole	390.00	2605.00	2215.00	390.00	2599.82	-0.77	-0.26	-13.73	-85.87	
9.625in Casing Intermediate	25.50	2585.20	2559.70	25.50	2580.02	0.00	0.00	-13.81	-85.97	
8.75in Open Hole	2605.00	6251.00	3646.00	2599.82	5894.10	-13.73	-85.87	-146.60	-1560.27	
8.5in Open Hole	6251.00	21803.00	15552.00	5894.10	6445.23	-146.60	-1560.27	14166.73	-6676.42	
5.5in Casing Production	25.50	21803.00	21777.50	25.50	6445.23	0.00	0.00	14166.73	-6676.42	

TARGETS								
Name	TVD [ft]	North [ft]	East [ft]	Grid East [US ft]	Grid North [US ft]	Latitude	Longitude	Shape
Tygart Unit 1H POE Rev-2	6483.00	274.87	-1948.38	1674907.61	14359290.58	39°32'31.0955"N	80°52'39.5658"W	point
Tygart Unit 1H BHL Rev-2	6514.00	14154.91	-6698.20	1670159.69	14373165.06	39°34'48.3349"N	80°53'39.9867"W	point
Tygart Unit 1H LP Rev-2	6514.00	472.07	-2015.86	1674840.15	14359487.70	39°32'33.0455"N	80°52'40.4238"W	point
Tygart Unit 1H 50' L/R Hard Line	7000.00	7214.89	-4323.29	1672533.65	14366227.82	39°33'39.7164"N	80°53'9.7680"W	rectangle
2D Rectangle 14670.3 x 100.								



Actual Wellpath Report

Tygart Unit 1H AWP Proj: 21803'

Page 12 of 13



REFERENCE WELLPATH IDENTIFICATION

Operator	ANTERO RESOURCES CORPORATION	Well	Tygart Unit 1H
Field	Tyler	API	47-095-02721-0000
Facility	Elk Fork Pad	Wellbore	Tygart Unit 1H AWB
Slot	Slot #01		

WELLPATH COMPOSITION - Ref Wellbore: Tygart Unit 1H AWB Ref Wellpath: Tygart Unit 1H AWP Proj: 21803'

Start MD (ft)	End MD (ft)	Positional Uncertainty Model	Log Name/Comment	Wellbore	Survey Date
25.50	384.00	Gyrodata 2015 - GC+WIR+DPIPE	01_Gyrodata MS Gyro <17-1/2"> (100'-384')	Tygart Unit 1H AWB	16/Jan/2021
384.00	2533.00	BH NaviTrak (2019) (Axial Corr+HRGM)	02_APS EM <12-1/4"> (384')(419'-2533')	Tygart Unit 1H AWB	16/Jan/2021
2533.00	6183.00	BH NaviTrak (2019) (Axial Corr+HRGM)	03_APS EM <8-3/4"> (2533')(2639'-6183')	Tygart Unit 1H AWB	16/Jan/2021
6183.00	21803.00	BH AutoTrak Curve/eXpress (2019) (HRGM, Short spacing)	04_BH AT Curve <8-1/2"> (6183')(6234'-21778')	Tygart Unit 1H AWB	16/Jan/2021



Actual Wellpath Report

Tygart Unit 1H AWP Proj: 21803'

Page 13 of 13



REFERENCE WELLPATH IDENTIFICATION			
Operator	ANTERO RESOURCES CORPORATION	Well	Tygart Unit 1H
Field	Tyler	API	47-095-02721-0000
Facility	Elk Fork Pad	Wellbore	Tygart Unit 1H AWB
Slot	Slot #01		

COMMENTS
<p>Wellpath general comments API: 47-095-02721-0000 BH Job #: 110728663 Rig: H&P 317 Duration: 1/17/2021-1/26/2021 Gyrodatta MS Gyro <17-1/2"> (100'-384') APS EM <12-1/4"> (384')(419'-2533') APS EM <8-3/4"> (2533')(2639'-6183') BH AT Curve <8-1/2"> (6183')(6234'-21778') Sycamore: 6656' MD Middlesex: 6812' MD Burkett: 6980' MD Tully: 7026' MD Marcellus POE: 7150' MD Projected MD at TD: 21803'</p>